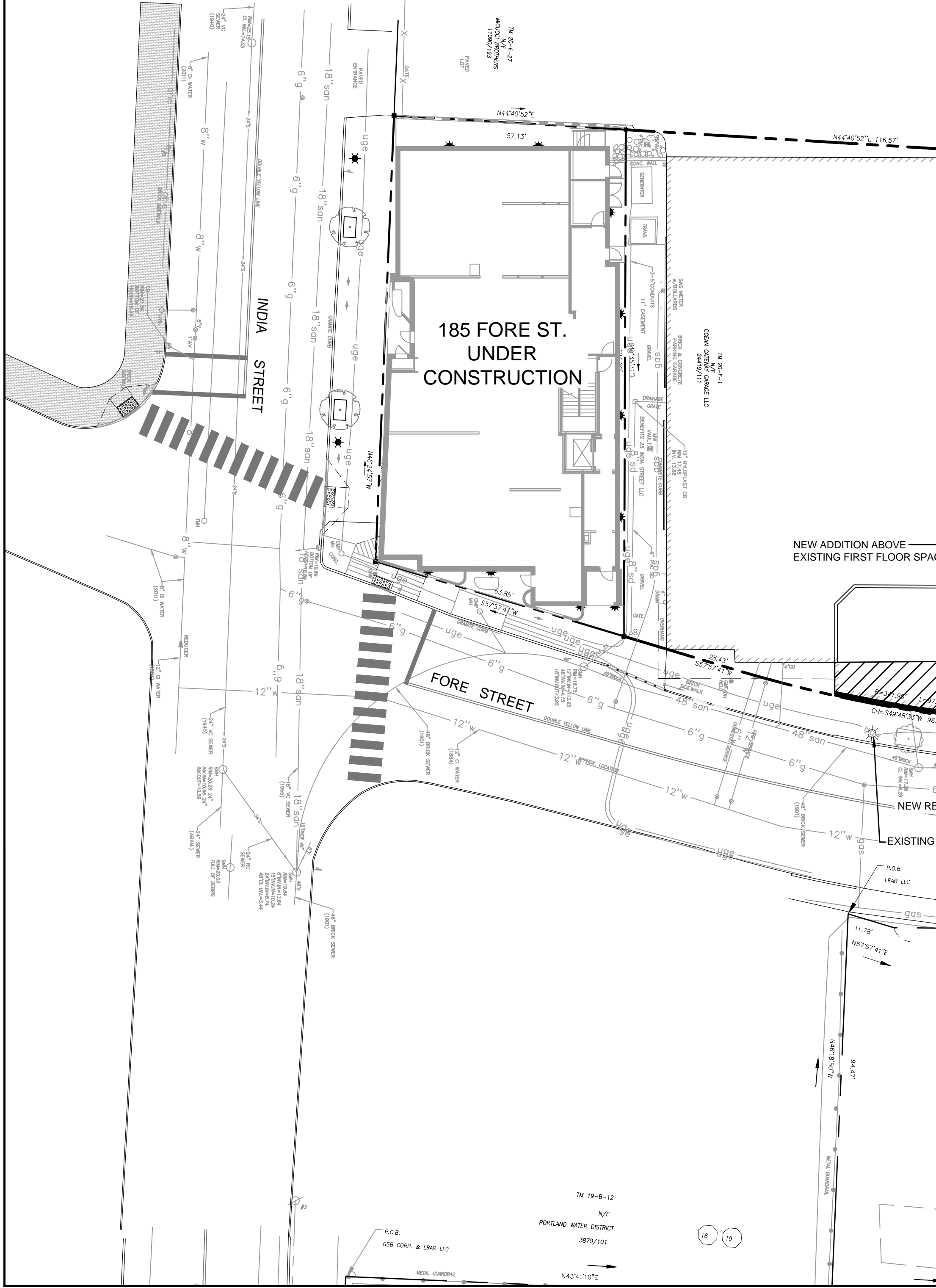
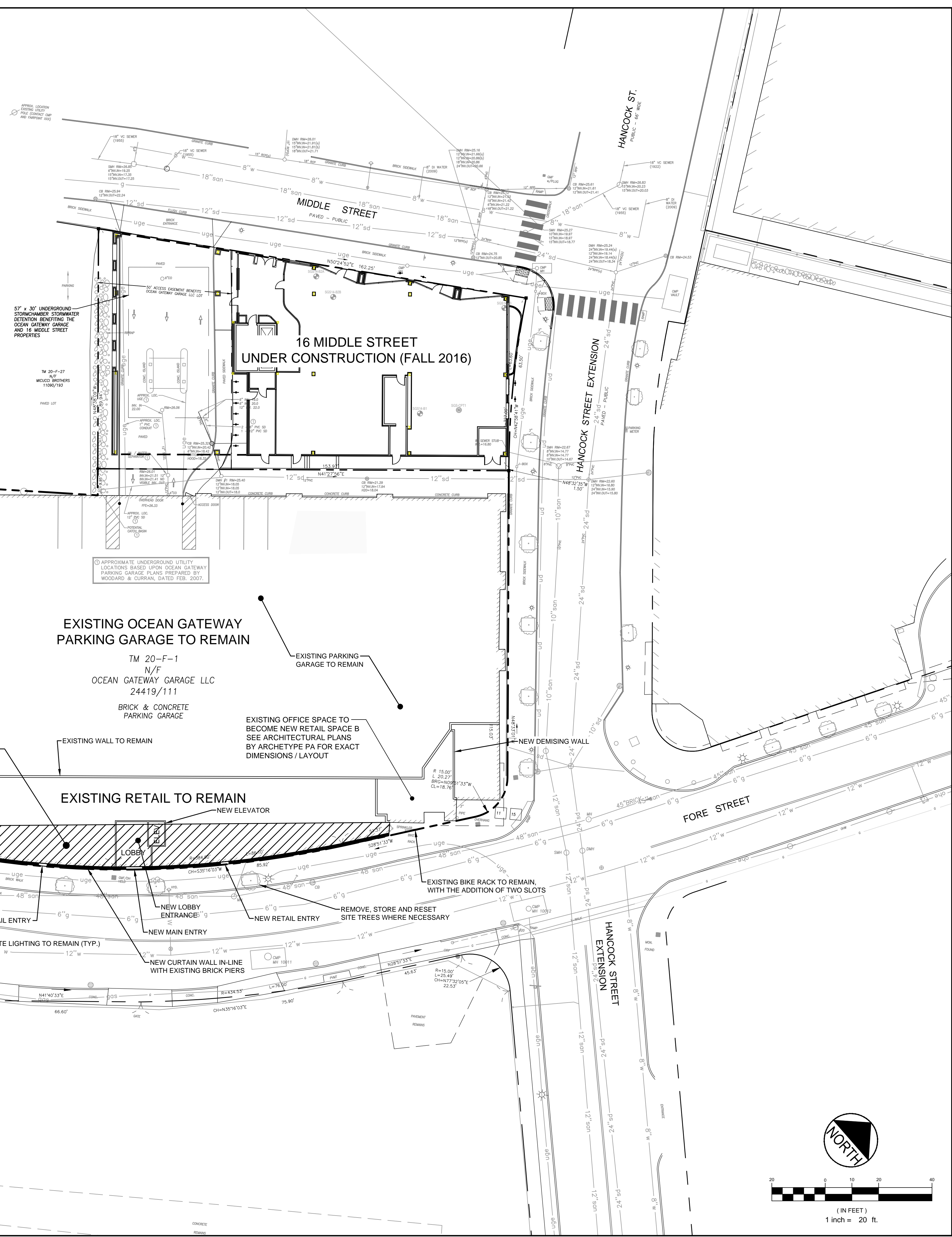
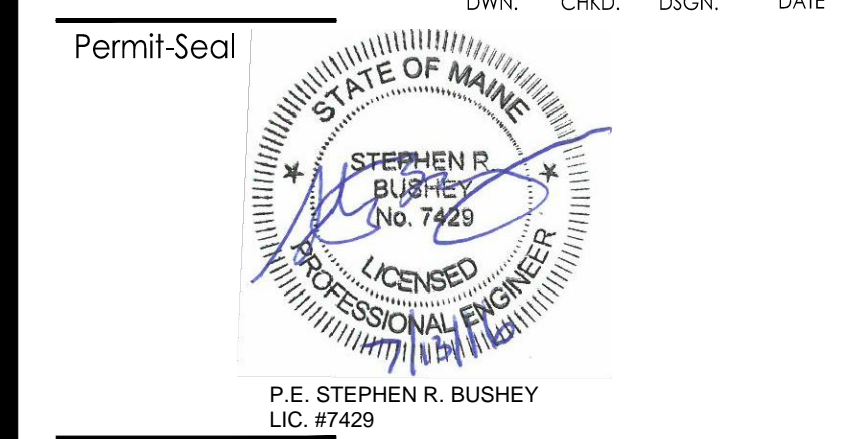


- PLAN REFERENCES:**
1. "EXISTING CONDITIONS PLAN", OCEAN GATEWAY PARKING GARAGE, PREPARED FOR RIVERWALK, LLC, 2 MARKET STREET, SUITE 500, PORTLAND, MAINE 04101, PREPARED BY WOODARD & CURRAN OF PORTLAND, MAINE, SHEET C100, LATEST REVISION OF 2/22/07.
  2. "UTILITY PLAN", OCEAN GATEWAY PARKING GARAGE, PREPARED FOR RIVERWALK, LLC, 2 MARKET STREET, SUITE 500, PORTLAND, MAINE 04101, PREPARED BY WOODARD & CURRAN OF PORTLAND, MAINE, SHEET C100, LATEST REVISION OF 8/10/07.
  3. "SUBDIVISION/RECORDING PLAN ON INDIA STREET AND FORE STREET, PORTLAND, MAINE", MADE FOR RECORD OWNERS RIVERWALK, LLC, 25 INDIA LLC, HANCOCK & MIDDLE LLC, OCEAN GATEWAY GARAGE LLC, 2 MARKET STREET, SUITE 500, PORTLAND, MAINE, PREPARED BY OWEN HASKELL, INC. OF PORTLAND, MAINE, DRAWING NO. 1B, LATEST REVISION OF 04-13-06.
  4. "OFF-SITE DRAINAGE PLAN, RESIDENCE INN BY MARIOTT - PORTLAND, MAINE", PREPARED FOR SUMMIT HOTEL PROPERTIES, LLC, PREPARED BY GORRILL-PALMER CONSULTING ENGINEERS, INC. OF GRAY, MAINE, DRAWING NO. C103, LATEST REVISION OF 11/05/07.
  5. "PORTLAND SEWER SYSTEM, INFILTRATION-INFLOW ANALYSIS, SYSTEM BASE MAPPING, STUDY AREA IV", PREPARED FOR PORTLAND WATER DISTRICT, PREPARED BY HUNTER-BALLEW ASSOCIATES OF FALMOUTH, MAINE, DRAWING NO. IV-4, LATEST REVISION OF 11-14-03.
  6. "EXISTING CONDITIONS PLAN AND DEMOLITION PLAN, HANCOCK STREET CONSTRUCTION, BID #5607", PREPARED FOR CITY OF PORTLAND DEPARTMENT OF PUBLIC WORKS, PORTLAND, MAINE, PREPARED BY WOODARD & CURRAN OF PORTLAND, MAINE, SHEET C100, LATEST REVISION OF 01/12/07.
  7. "HANCOCK STREET PLAN & PROFILE, STA. 0+00 TO STA. 3+32, HANCOCK STREET CONSTRUCTION, BID #5607", PREPARED FOR CITY OF PORTLAND DEPARTMENT OF PUBLIC WORKS, PORTLAND, MAINE, PREPARED BY WOODARD & CURRAN OF PORTLAND, MAINE, SHEET C202, LATEST REVISION OF 01/12/07.
  8. "PLAN OF LAND STANDARD BOUNDARY SURVEY, ON FORE, INDIA, MIDDLE, NEWBURY, HANCOCK & MOUNTFORT STREETS, PORTLAND, MAINE", FOR SHIPYARD BREWING COMPANY, PREPARED BY OWEN HASKELL, INC. OF PORTLAND, MAINE, DRAWING NO. 1, LATEST REVISION OF 9/1/94.
  9. "AMENDED RECORDING PLAT, 185 FORE STREET, FORE STREET, PORTLAND, MAINE", MADE FOR RECORD OWNER EAST INDIA LAND COMPANY LLC, c/o SHIPYARD BREWING COMPANY, 86 NEWBURY STREET, PORTLAND, MAINE, PREPARED BY OWEN HASKELL, INC. OF FALMOUTH, MAINE, DRAWING NO. C-2.1, LATEST REVISION OF 10/27/15.
  10. "AMENDED RECORDING PLAT, 16 MIDDLE STREET, MIDDLE STREET, PORTLAND, MAINE", MADE FOR RECORD OWNER EIGHT MIDDLE LAND COMPANY LLC, c/o SHIPYARD BREWING COMPANY, 86 NEWBURY STREET, PORTLAND, MAINE, PREPARED BY OWEN HASKELL, INC. OF FALMOUTH, MAINE, DRAWING NO. C-2.1, LATEST REVISION OF 2/18/16.
  11. "ALTA/ACSM LAND TITLE SURVEY, INDIA STREET, FORE STREET & HANCOCK STREET EXTENSION, PORTLAND, CUMBERLAND COUNTY, MAINE", MADE FOR PORTLAND NORWICH GROUP, LLC, OWNER OF RECORD: OCEAN GATEWAY GARAGE, LLC, PREPARED BY OWEN HASKELL, INC. OF FALMOUTH, MAINE, LATEST REVISION OF NOVEMBER 30, 2015.



16.07.13  
SRB  
CDD  
BY  
Revision

File Name: SP-M150-BASE CDD SRB SRB 2016.07.13  
DWN. CHKD. DSGN. DATE



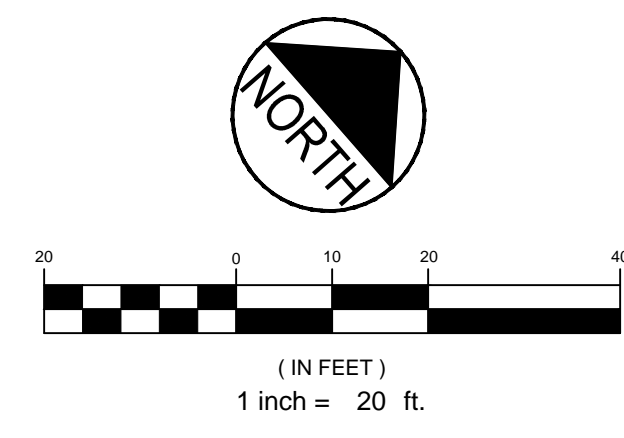
Client/Project  
PREPARED FOR  
ARCHETYPE PA  
ADDITION TO OCEAN GATEWAY GARAGE

167 FORE STREET, PORTLAND, MAINE

Title  
SITE PLAN

Project No. 195350140 Scale 1" = 20'

Sheet C-1.1



V:\195350140\Civil\Construction Set\SP-M150-BASE.dwg cad:cbk 8/20/16 2:32 PM