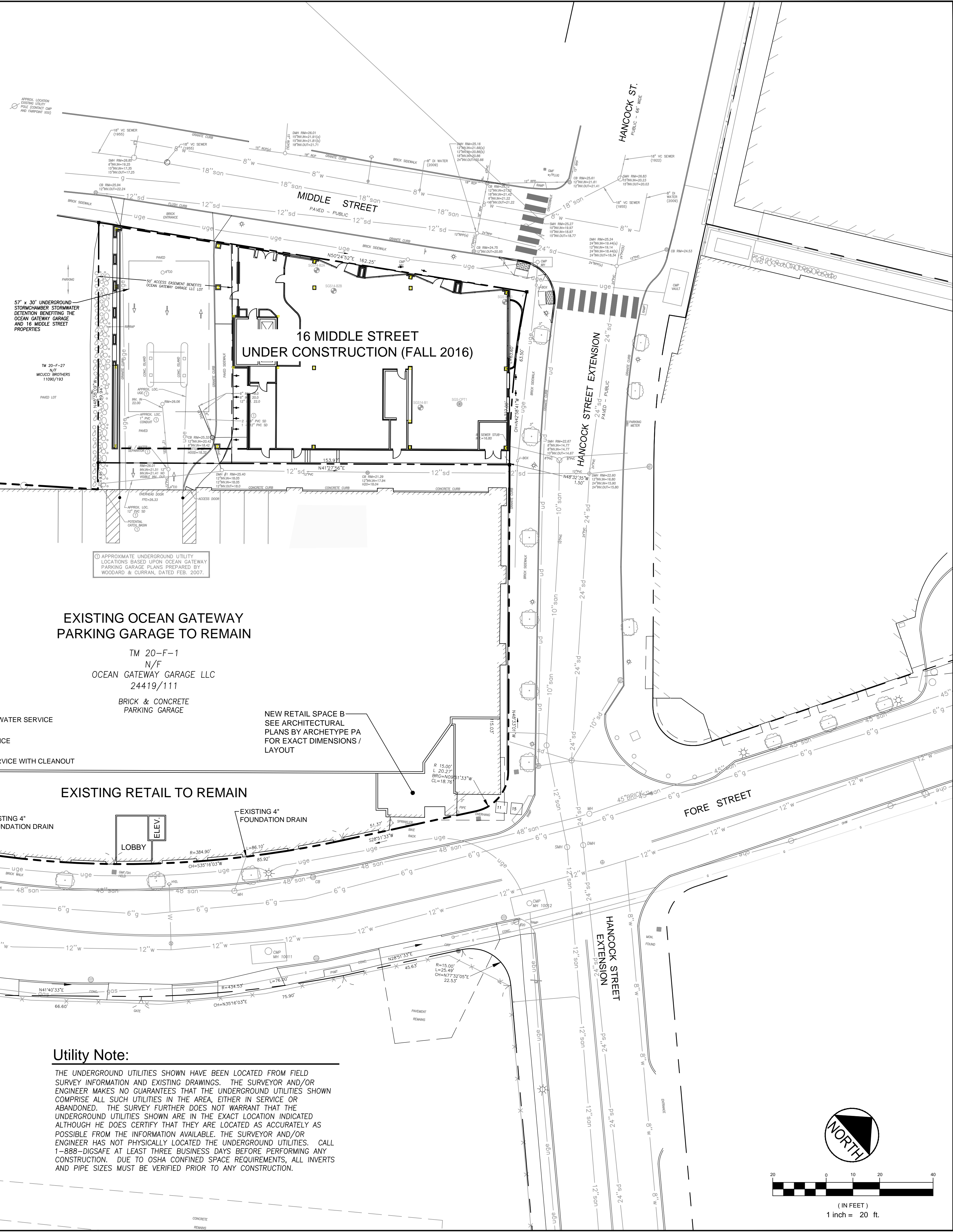


- PLAN REFERENCES:**
- "EXISTING CONDITIONS PLAN", OCEAN GATEWAY PARKING GARAGE, PREPARED FOR RIVERWALK, LLC, 2 MARKET STREET, SUITE 500, PORTLAND, MAINE 04101, PREPARED BY WOODARD & CURRAN OF PORTLAND, MAINE, SHEET C100, LATEST REVISION OF 2/22/07.
 - "UTILITY PLAN", OCEAN GATEWAY PARKING GARAGE, PREPARED FOR RIVERWALK, LLC, 2 MARKET STREET, SUITE 500, PORTLAND, MAINE 04101, PREPARED BY WOODARD & CURRAN OF PORTLAND, MAINE, SHEET C100, LATEST REVISION OF 8/10/07.
 - "SUBDIVISION/RECORDING PLAT ON INDIA STREET AND FORE STREET, PORTLAND, MAINE", MADE FOR RECORD OWNERS RIVERWALK, LLC, 25 INDIA LLC, HANCOCK & MIDDLE LLC, OCEAN GATEWAY GARAGE LLC, 2 MARKET STREET, SUITE 500, PORTLAND, MAINE, PREPARED BY OWEN HASKELL, INC. OF PORTLAND, MAINE, DRAWING NO. 15, LATEST REVISION OF 04-13-06.
 - "OFF-SITE DRAINAGE PLAN, RESIDENCE INN BY MARRIOTT - PORTLAND, MAINE", PREPARED FOR SUMMIT HOTEL PROPERTIES, LLC, PREPARED BY GORRILL-PALMER CONSULTING ENGINEERS, INC. OF GRAY, MAINE, DRAWING NO. C103, LATEST REVISION OF 11/05/07.
 - "PORTLAND SEWER SYSTEM, INFILTRATION-INFLOW ANALYSIS, SYSTEM BASE MAPPING, STUDY AREA IV", PREPARED FOR PORTLAND WATER DISTRICT, PREPARED BY HUNTER-BALLEW ASSOCIATES OF FALMOUTH, MAINE, DRAWING NO. IV-4, LATEST REVISION OF 11-14-03.
 - "EXISTING CONDITIONS PLAN AND DEMOLITION PLAN, HANCOCK STREET CONSTRUCTION, BID #5607", PREPARED FOR CITY OF PORTLAND DEPARTMENT OF PUBLIC WORKS, PORTLAND, MAINE, PREPARED BY WOODARD & CURRAN OF PORTLAND, MAINE, SHEET C100, LATEST REVISION OF 01/12/07.
 - "HANCOCK STREET PLAN & PROFILE, STA. 0+00 TO STA. 3+32, HANCOCK STREET CONSTRUCTION, BID #5607", PREPARED FOR CITY OF PORTLAND DEPARTMENT OF PUBLIC WORKS, PORTLAND, MAINE, PREPARED BY WOODARD & CURRAN OF PORTLAND, MAINE, SHEET C202, LATEST REVISION OF 01/12/07.
 - "PLAN OF LAND STANDARD BOUNDARY SURVEY, ON FORE, INDIA, MIDDLE, NEWBURY, HANCOCK & MOUNTFORT STREETS, PORTLAND, MAINE", FOR SHIPYARD BREWING COMPANY, PREPARED BY OWEN HASKELL, INC. OF PORTLAND, MAINE, DRAWING NO. 1, LATEST REVISION OF 9/1/94.
 - "AMENDED RECORDING PLAT, 185 FORE STREET, FORE STREET, PORTLAND, MAINE", MADE FOR RECORD OWNER EAST INDIA LAND COMPANY LLC, c/o SHIPYARD BREWING COMPANY, 86 NEWBURY STREET, PORTLAND, MAINE, PREPARED BY OWEN HASKELL, INC. OF FALMOUTH, MAINE, DRAWING NO. C-2.1, LATEST REVISION OF 10/27/15.
 - "AMENDED RECORDING PLAT, 16 MIDDLE STREET, MIDDLE STREET, PORTLAND, MAINE", MADE FOR RECORD OWNER EIGHT MIDDLE LAND COMPANY LLC, c/o SHIPYARD BREWING COMPANY, 86 NEWBURY STREET, PORTLAND, MAINE, PREPARED BY OWEN HASKELL, INC. OF FALMOUTH, MAINE, DRAWING NO. C-2.1, LATEST REVISION OF 2/18/16.
 - "ALTA/ACSM LAND TITLE SURVEY, INDIA STREET, FORE STREET & HANCOCK STREET EXTENSION, PORTLAND, CUMBERLAND COUNTY, MAINE", MADE FOR PORTLAND NORWICH GROUP, LLC, OWNER OF RECORD: OCEAN GATEWAY GARAGE, LLC, PREPARED BY OWEN HASKELL, INC. OF FALMOUTH, MAINE, LATEST REVISION OF NOVEMBER 30, 2015.



EXISTING OCEAN GATEWAY PARKING GARAGE TO REMAIN

TM 20-F-1
N/F
OCEAN GATEWAY GARAGE LLC
24419/111
BRICK & CONCRETE
PARKING GARAGE

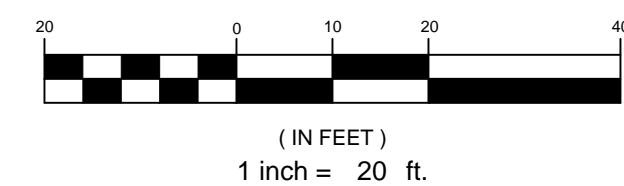
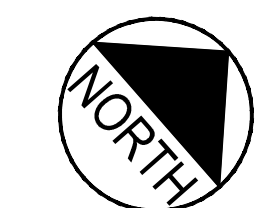
EXISTING RETAIL TO REMAIN

LOBBY
ELEV.

NEW RETAIL SPACE B
SEE ARCHITECTURAL
PLANS BY ARCHETYPE PA
FOR EXACT DIMENSIONS /
LAYOUT

Utility Note:

THE UNDERGROUND UTILITIES SHOWN HAVE BEEN LOCATED FROM FIELD SURVEY INFORMATION AND EXISTING DRAWINGS. THE SURVEYOR AND/OR ENGINEER MAKES NO GUARANTEES THAT THE UNDERGROUND UTILITIES SHOWN COMPRISE ALL SUCH UTILITIES IN THE AREA, EITHER IN SERVICE OR ABANDONED. THE SURVEY FURTHER DOES NOT WARRANT THAT THE UNDERGROUND UTILITIES SHOWN ARE IN THE EXACT LOCATION INDICATED ALTHOUGH HE DOES CERTIFY THAT THEY ARE LOCATED AS ACCURATELY AS POSSIBLE FROM THE INFORMATION AVAILABLE. THE SURVEYOR AND/OR ENGINEER HAS NOT PHYSICALLY LOCATED THE UNDERGROUND UTILITIES. CALL 1-888-DIGSAFE AT LEAST THREE BUSINESS DAYS BEFORE PERFORMING ANY CONSTRUCTION. DUE TO OSHA CONFINED SPACE REQUIREMENTS, ALL INVERTS AND PIPE SIZES MUST BE VERIFIED PRIOR TO ANY CONSTRUCTION.



V:\19535014\19535014-Civil\Construction-Set\SP-A150-BASE.dwg caddate: 7/19/2016 5:29 PM

2016.07.13
SRB
CDD
1 ISSUED TO CLIENT
Revision
By
Appr.
TYAM/DD

File Name: SP-A150-BASE	CDD	SRB	SRB	2016.07.13
	DWN.	CHKD.	DSGN.	DATE

Permit-Seal

P.E. STEPHEN R. BUSHEY
LIC. #7429

Client/Project
PREPARED FOR ARCHETYPE PA
ADDITION TO OCEAN GATEWAY GARAGE
167 FORE STREET, PORTLAND, MAINE

Title
UTILITY PLAN

Project No. 195350140	Scale 1" = 20'
Sheet C-1.0	