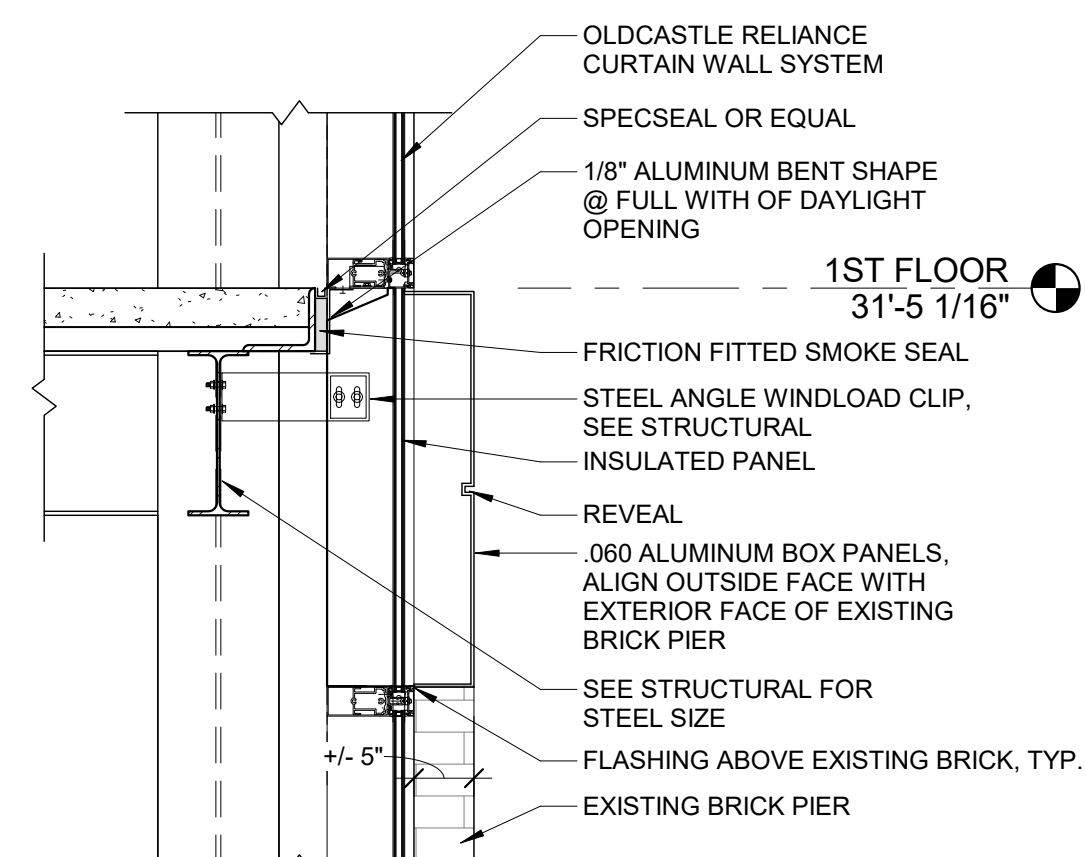


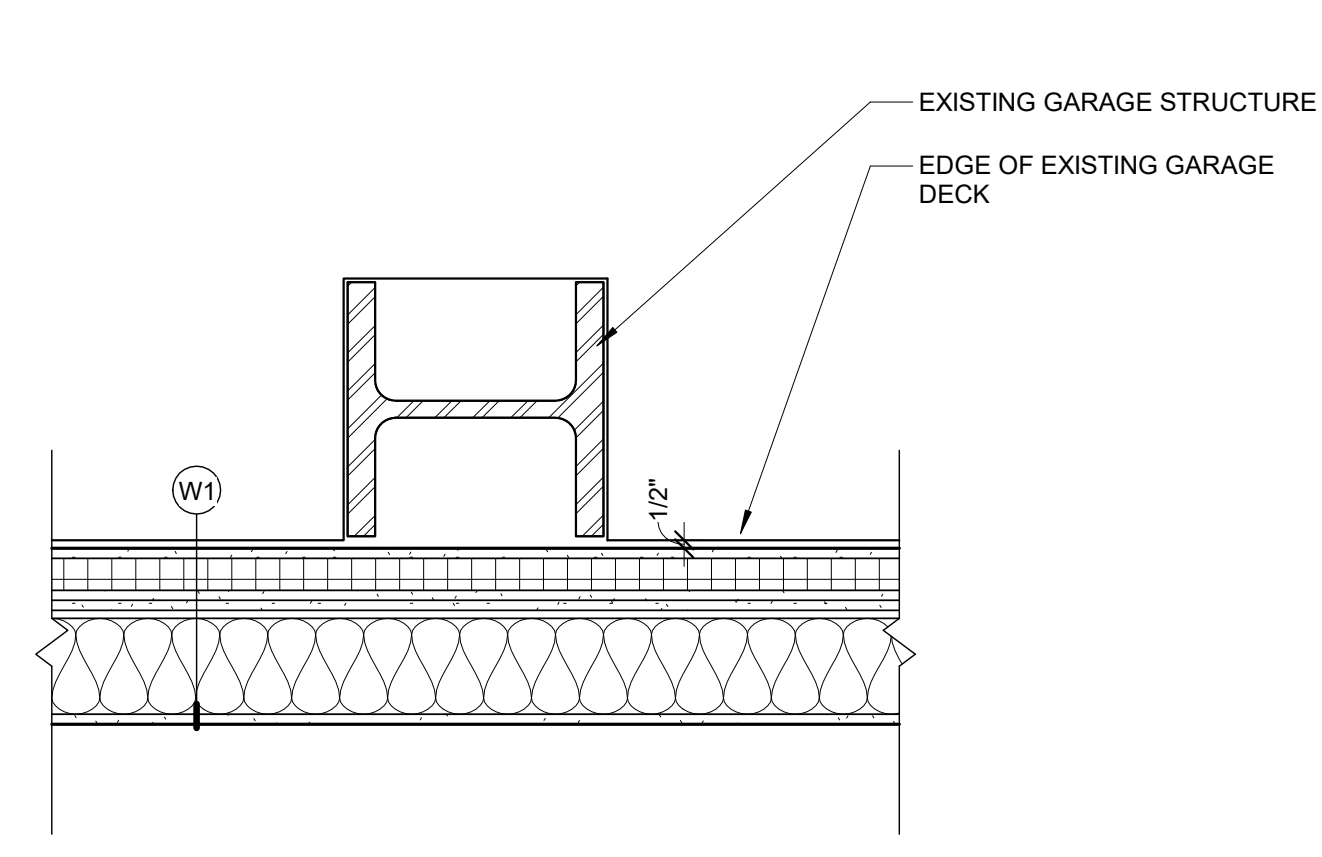
10 CONNECTION TO EXST. GARAGE - DETAIL 1

3/4" = 1'-0"



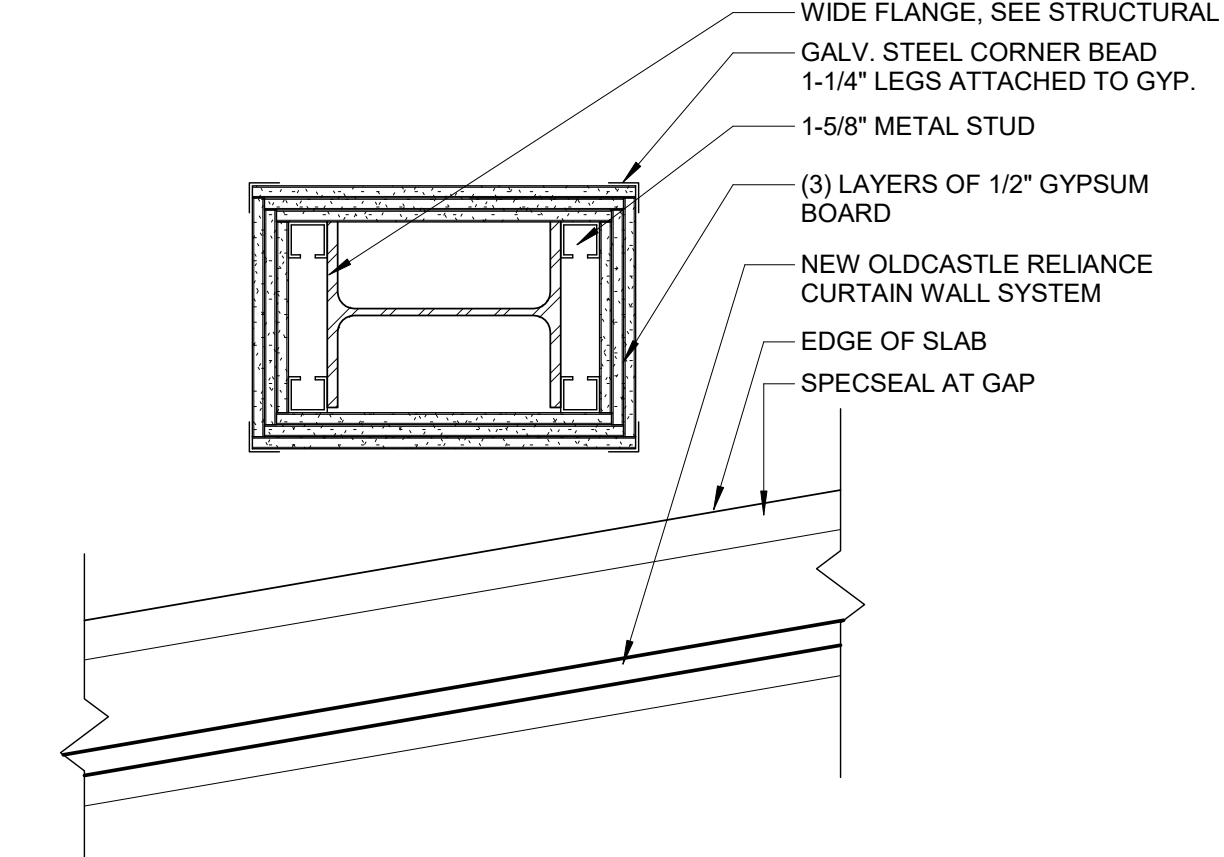
6 CURTAIN WALL - DETAIL 1

3/4" = 1'-0"



3 COLUMN DETAIL 3

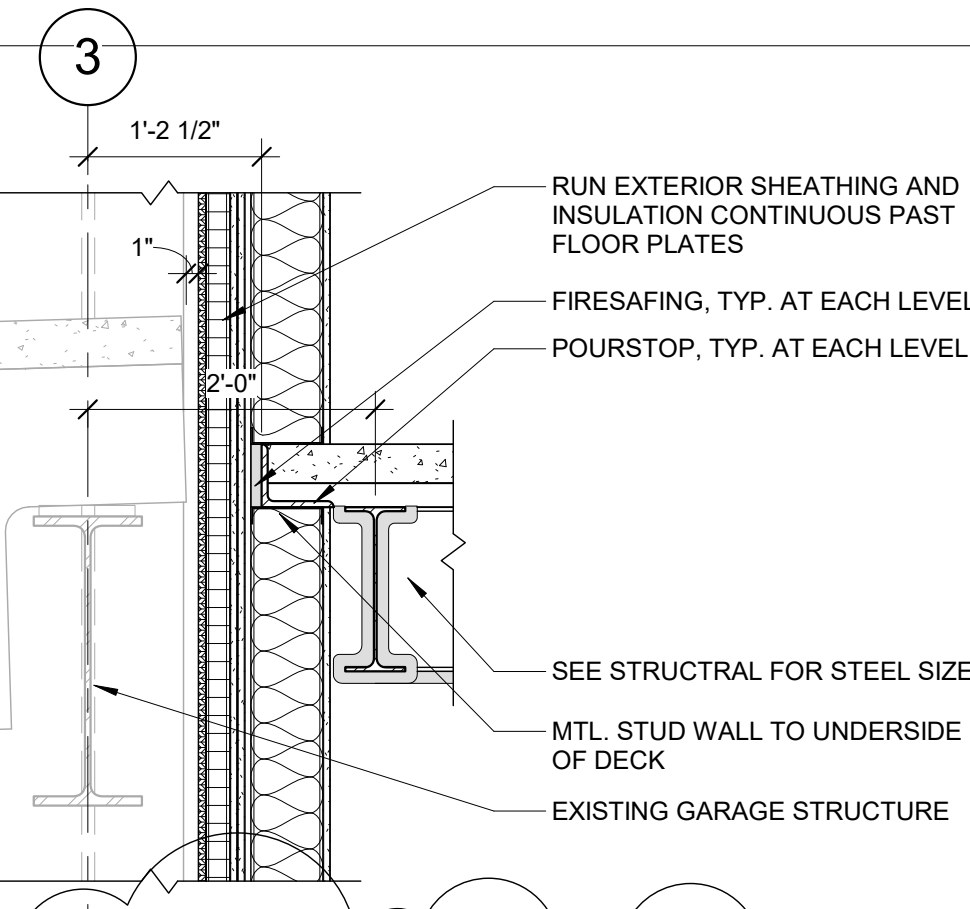
1" = 1'-0"



1 COLUMN DETAIL 1

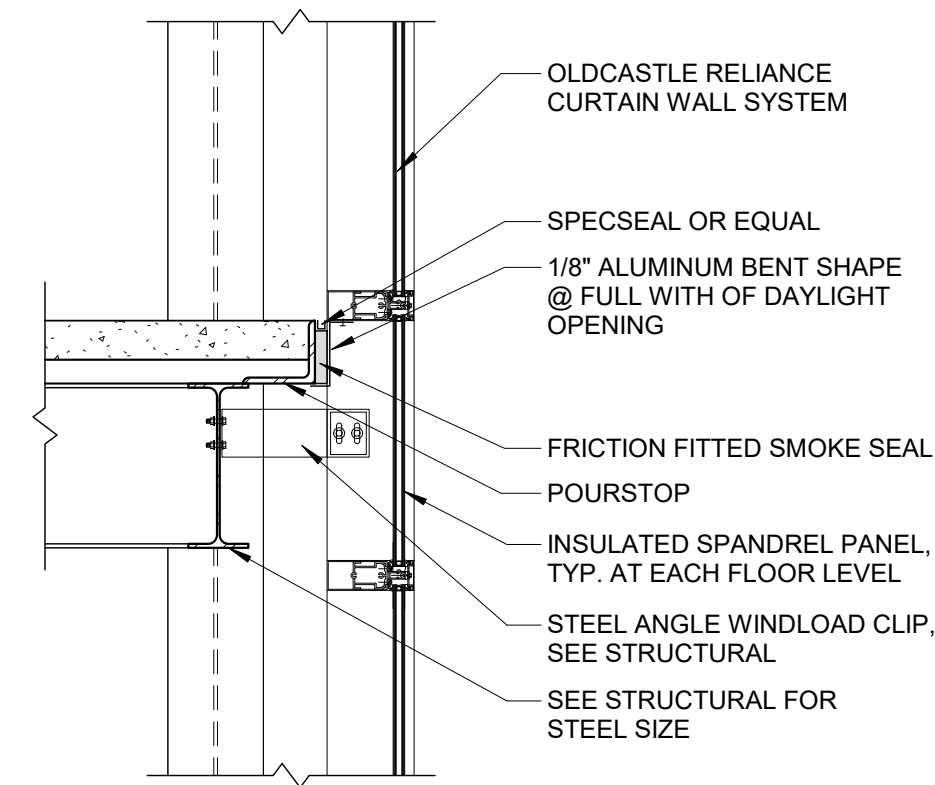
1 1/2" = 1'-0"

COLUMN WRAP - 2HR RATING
UL DESIGN - NO. X528



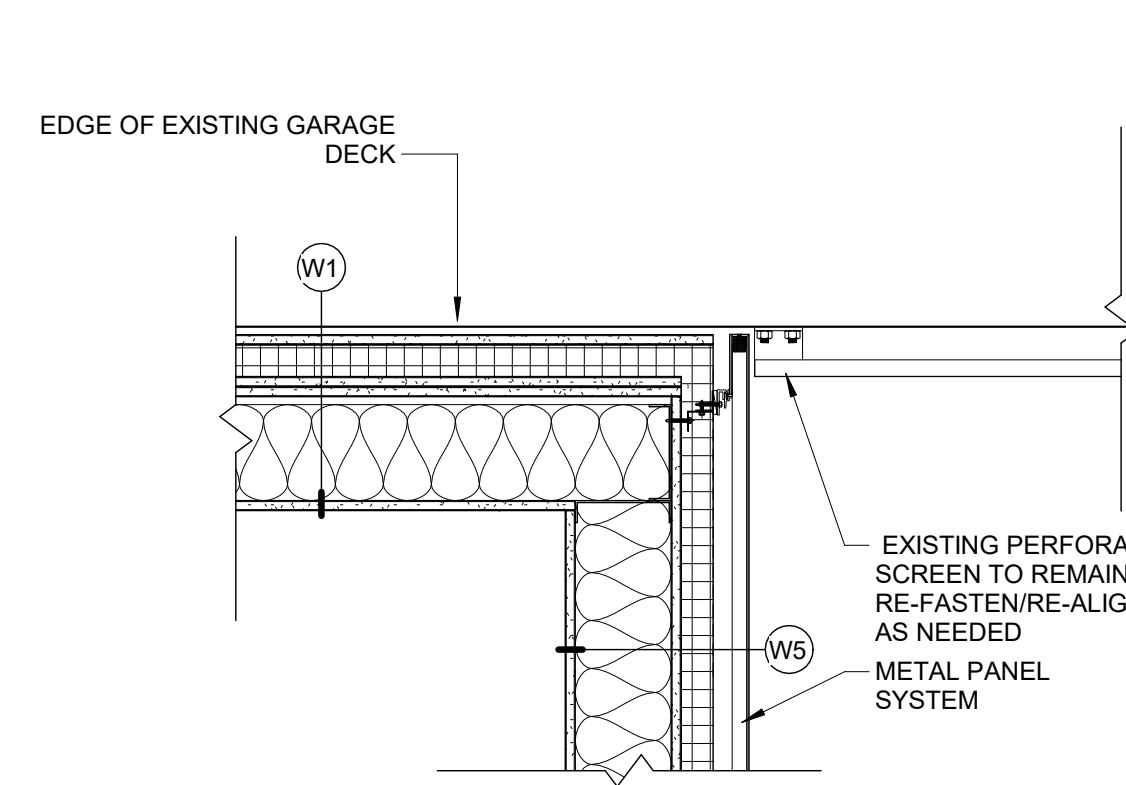
11 CONNECTION TO EXST. GARAGE - DETAIL 2

3/4" = 1'-0"



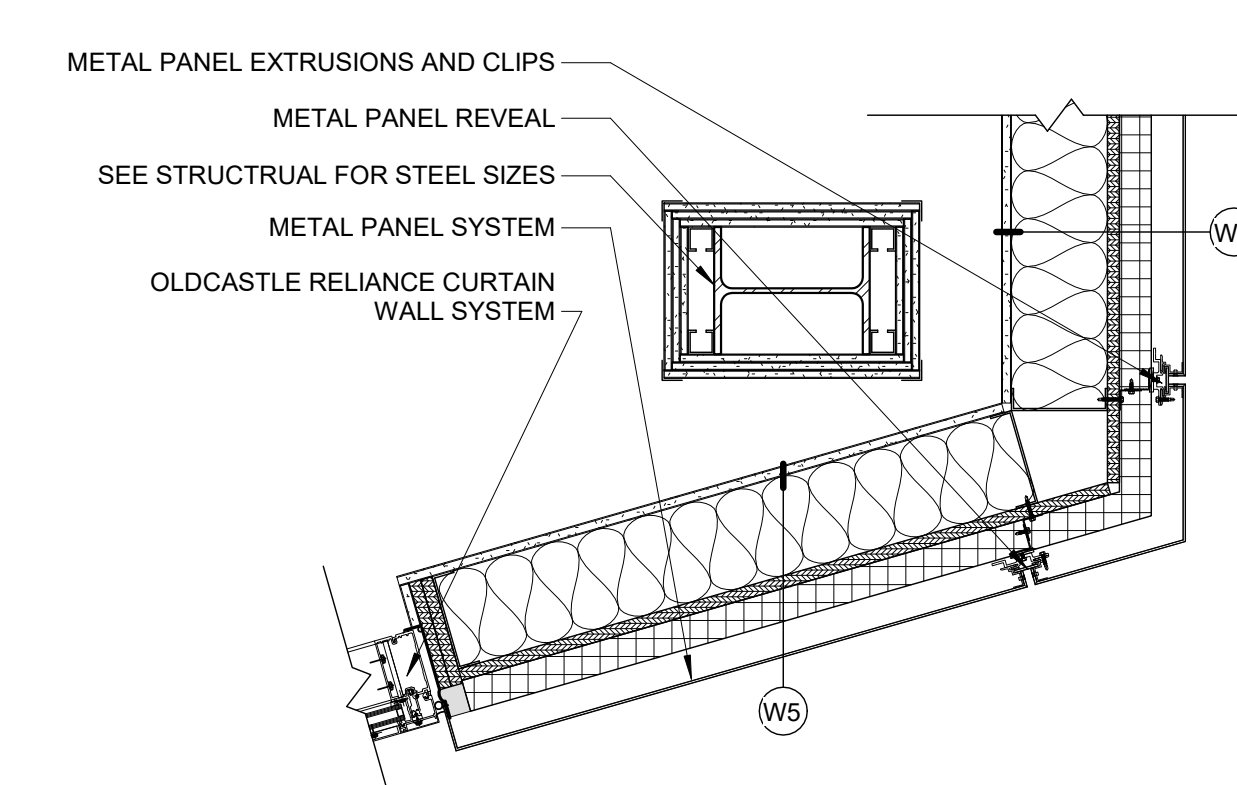
7 CURTAIN WALL - DETAIL 2

3/4" = 1'-0"



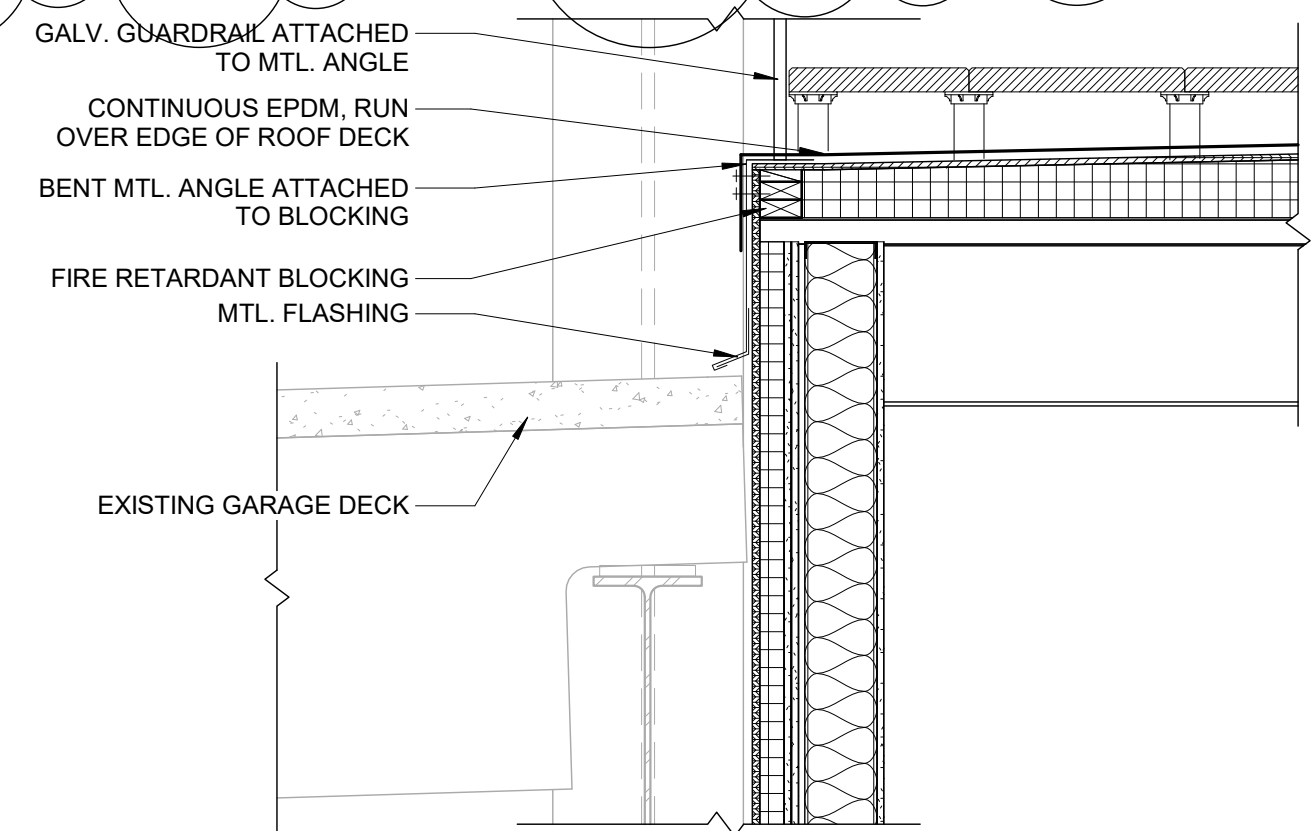
4 CORNER DETAIL

1" = 1'-0"



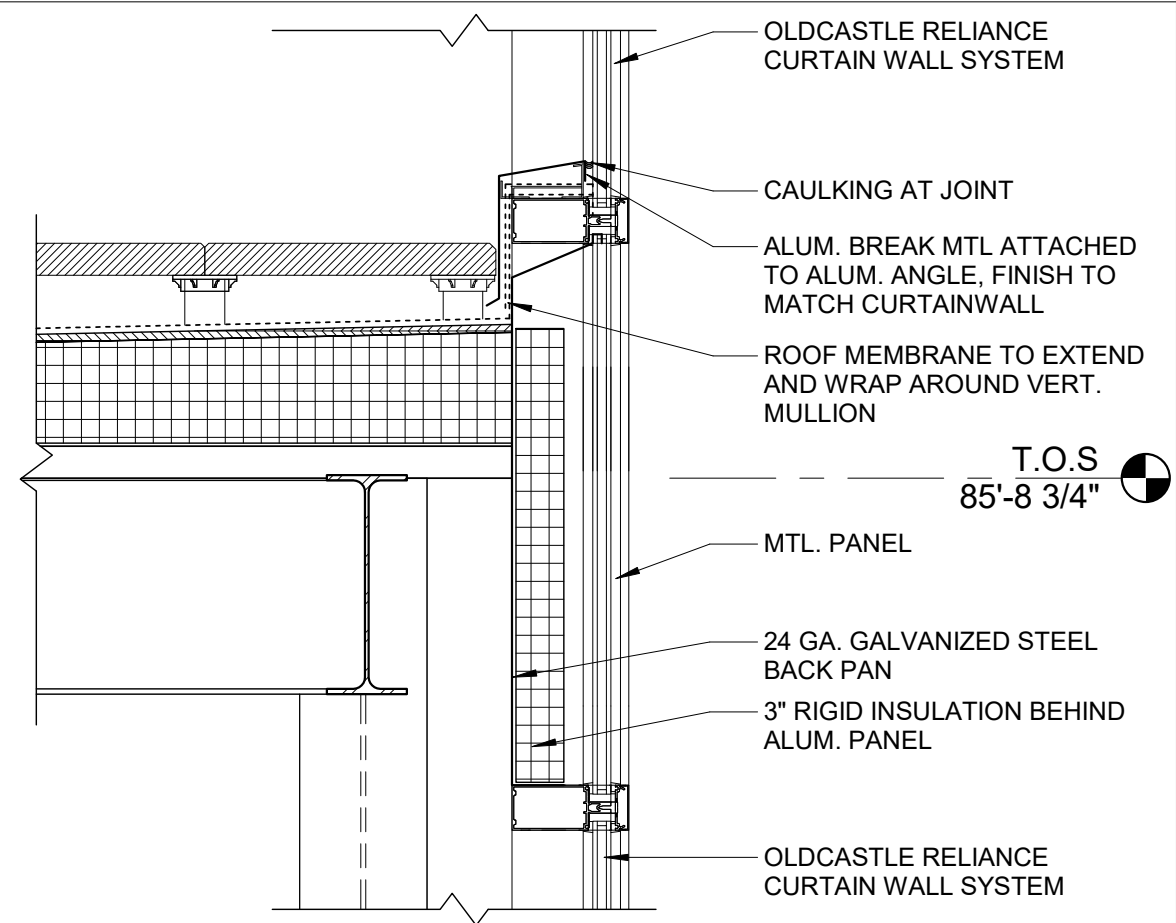
2 COLUMN DETAIL 2

1" = 1'-0"



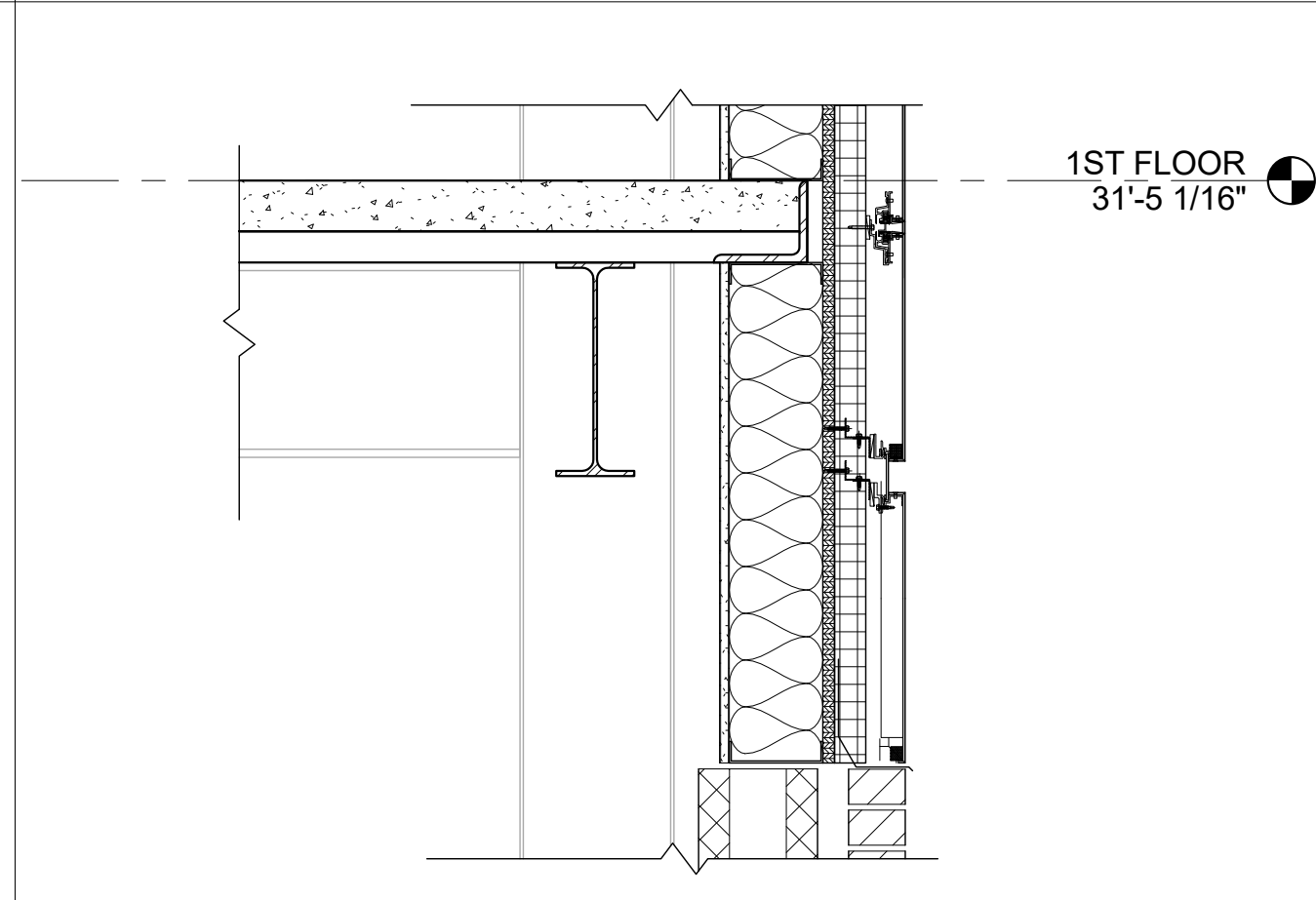
12 CONNECTION TO EXST. GARAGE - DETAIL 3

3/4" = 1'-0"



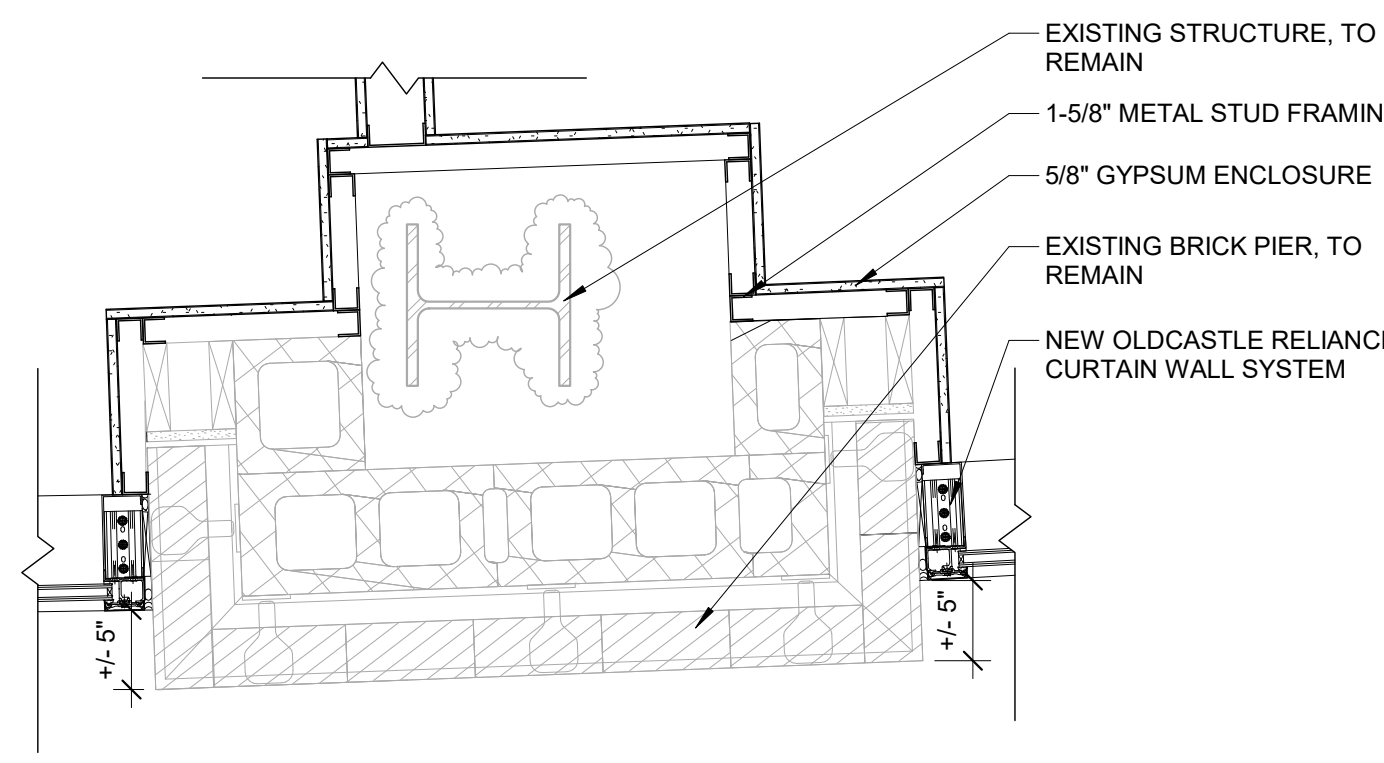
8 CURTAIN WALL - DETAIL 3

1" = 1'-0"



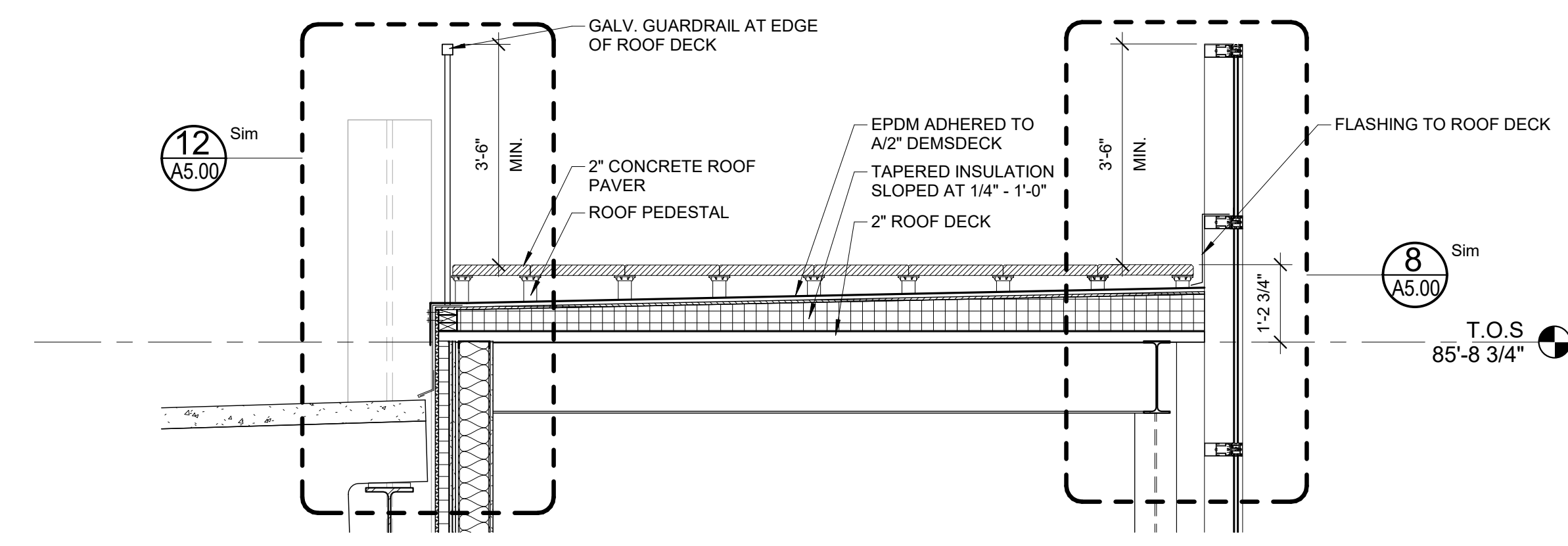
5 END WALL CONNECTION DETAIL

1" = 1'-0"



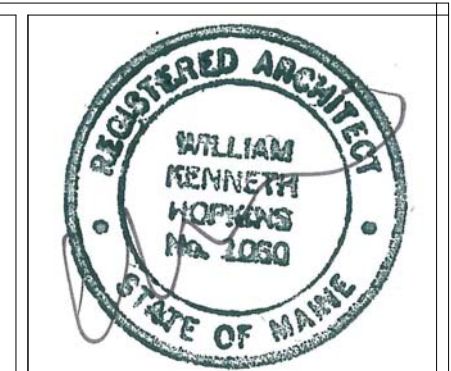
13 EXISTING CLOUMN DETAIL AT LOBBY

1" = 1'-0"



9 EXTERIOR ROOFTOP DECK

1/2" = 1'-0"



Prepared For: Owner	Project: Ocean Gateway Addition	Revisions: 05/04/2017 - REVISED BID SET
Address: City, State	167 Fore Street Portland, Maine	
Architect: ARCHETYPE Architects 48 Union Wharf Portland, Maine 04101 (207) 772-6022 ARCHETYPE@ARCHETYPEPA.COM	Date: 03 / 03 / 2017	Scale: As indicated
Details		A5.00