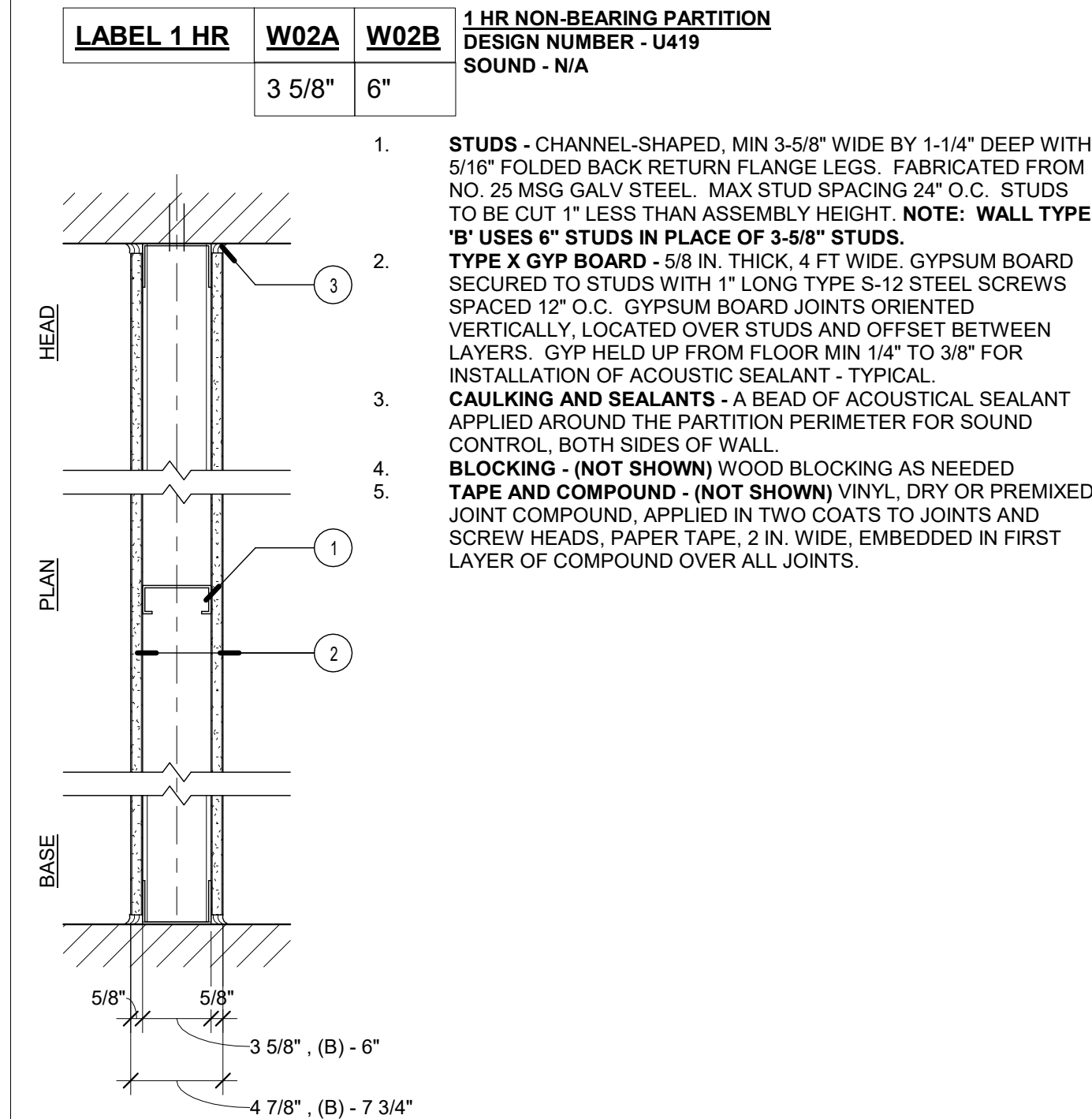


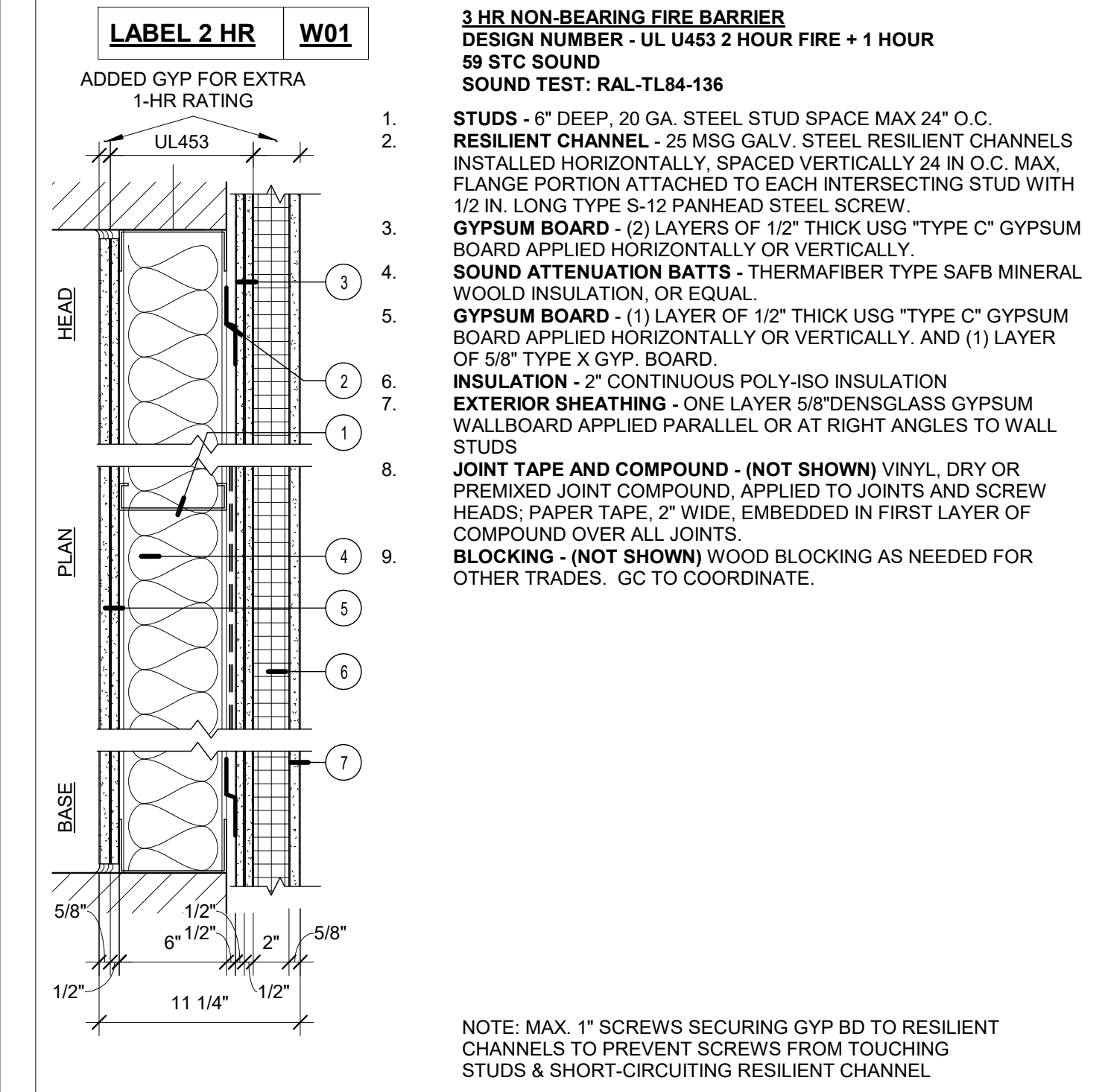
- W04** 2 HR RATED ELEVATOR SHAFT
DESIGN NUMBER - UL 411
- STUDS - CHANNEL-SHAPED, MIN 3-5/8" WIDE BY 1-1/4" DEEP WITH 5/16" FOLDED BACK RETURN FLANGE LEGS. FABRICATED FROM NO. 25 MSG GALV STEEL. MAX STUD SPACING 24" O.C. STUDS TO BE CUT 1" LESS THAN ASSEMBLY HEIGHT.
 - GYPSUM BOARD - (2) LAYER 5/8" GYP. BD. EACH SIDE APPLIED PERPENDICULAR TO FRAMING WITH 1" TYPE S STEEL SCREWS SPACED 8" O.C. GYP HELD UP FROM FLOOR MIN 1/4" TO 3/8" FOR INSTALLATION OF ACOUSTIC SEALANT - TYPICAL.
 - SOUND ATTENUATION BATTS - FIBERGLASS BATT WITH UL CLASS AS TO SURFACE BURNING CHARACTERISTICS AND OR FIRE RESISTANCE REQUIRED.
 - BLOCKING - (NOT SHOWN) WOOD BLOCKING AS NEEDED
 - JOINT TAPE AND COMPOUND - (NOT SHOWN) VINYL, DRY OR PREMIXED JOINT COMPOUND, APPLIED TO JOINTS AND SCREW HEADS; PAPER TAPE, 2" WIDE, EMBEDDED IN FIRST LAYER OF COMPOUND OVER ALL JOINTS.

4 WALL 04 - RATED ELEVATOR SHAFT WALL
1 1/2" = 1'-0"



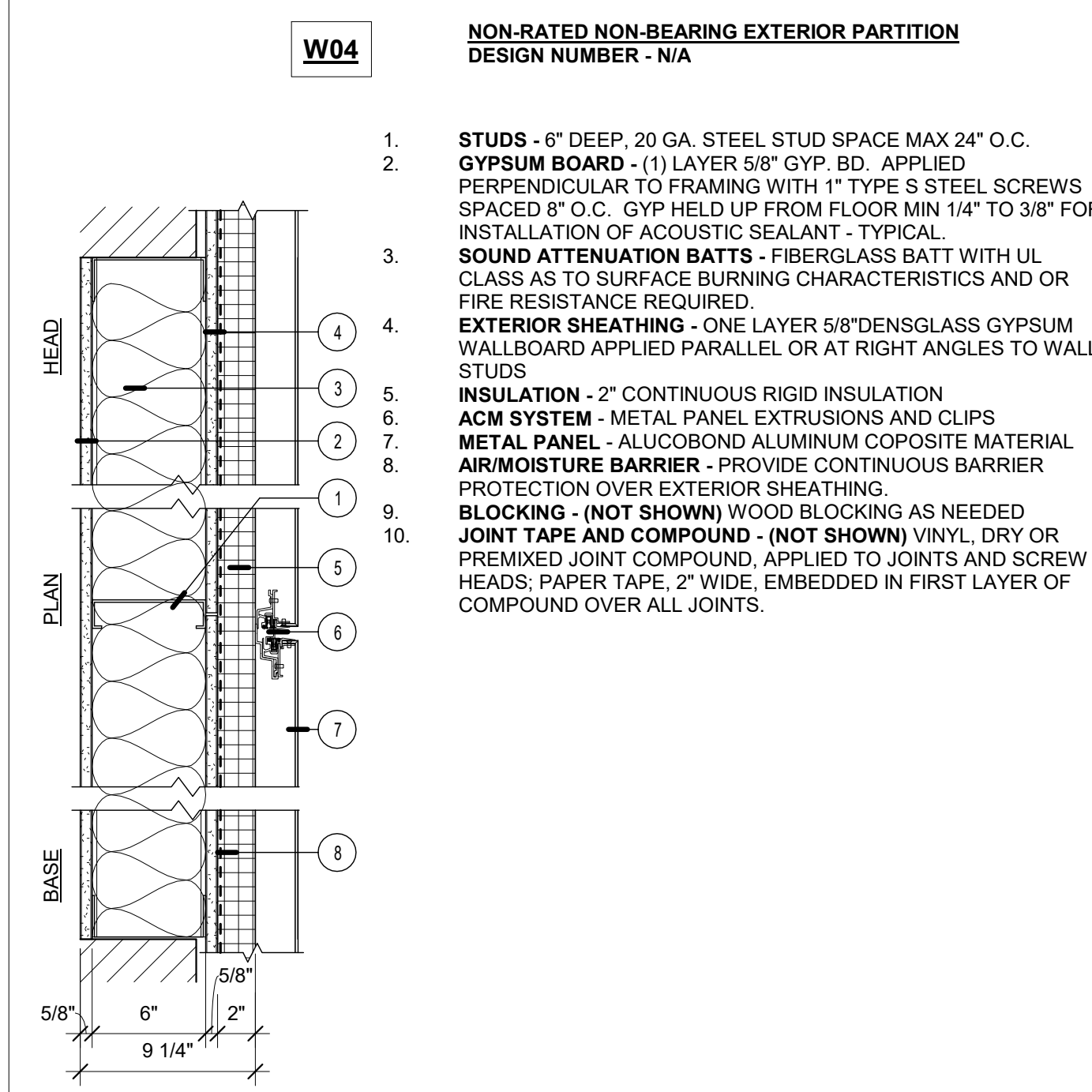
- LABEL 1 HR** **W02A** **W02B** 1 HR NON-BEARING PARTITION
DESIGN NUMBER - U419
SOUND - N/A
- STUDS - CHANNEL-SHAPED, MIN 3-5/8" WIDE BY 1-1/4" DEEP WITH 5/16" FOLDED BACK RETURN FLANGE LEGS. FABRICATED FROM NO. 25 MSG GALV STEEL. MAX STUD SPACING 24" O.C. STUDS TO BE CUT 1" LESS THAN ASSEMBLY HEIGHT. **NOTE: WALL TYPE 'B' USES 6" STUDS IN PLACE OF 3-5/8" STUDS.**
 - TYPE X GYP BOARD - 5/8 IN. THICK, 4 FT WIDE. GYPSUM BOARD SECURED TO STUDS WITH 1" LONG TYPE S-12 STEEL SCREWS SPACED 12" O.C. GYPSUM BOARD JOINTS ORIENTED VERTICALLY, LOCATED OVER STUDS AND OFFSET BETWEEN LAYERS. GYP HELD UP FROM FLOOR MIN 1/4" TO 3/8" FOR INSTALLATION OF ACOUSTIC SEALANT - TYPICAL.
 - CAULKING AND SEALANTS - A BEAD OF ACOUSTICAL SEALANT APPLIED AROUND THE PARTITION PERIMETER FOR SOUND CONTROL, BOTH SIDES OF WALL.
 - BLOCKING - (NOT SHOWN) WOOD BLOCKING AS NEEDED
 - TAPE AND COMPOUND - (NOT SHOWN) VINYL, DRY OR PREMIXED JOINT COMPOUND, APPLIED IN TWO COATS TO JOINTS AND SCREW HEADS; PAPER TAPE, 2 IN. WIDE, EMBEDDED IN FIRST LAYER OF COMPOUND OVER ALL JOINTS.

2 WALL 02A&B - NON RATED PARTITION
1 1/2" = 1'-0"



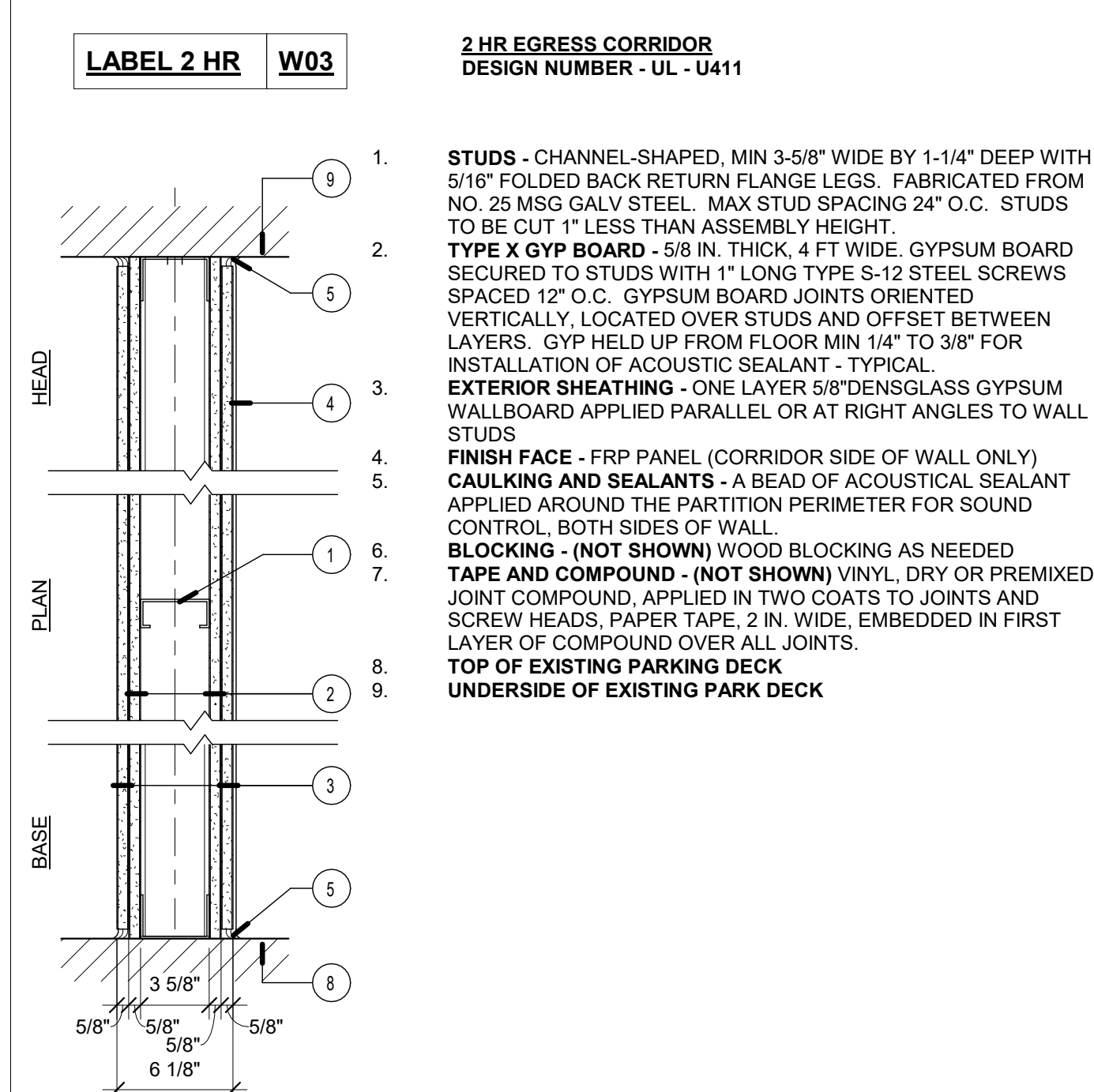
- LABEL 2 HR** **W01** 3 HR NON-BEARING FIRE BARRIER
DESIGN NUMBER - UL U453 2 HOUR FIRE + 1 HOUR
59 STC SOUND
SOUND TEST: RAL-TL84-136
- STUDS - 6" DEEP, 20 GA. STEEL STUD SPACE MAX 24" O.C.
 - RESILIENT CHANNEL - 25 MSG GALV. STEEL RESILIENT CHANNELS INSTALLED HORIZONTALLY, SPACED VERTICALLY 24 IN O.C. MAX. FLANGE PORTION ATTACHED TO EACH INTERSECTING STUD WITH 1/2 IN. LONG TYPE S-12 PANHEAD STEEL SCREW.
 - GYPSUM BOARD - (2) LAYERS OF 1/2" THICK USG "TYPE C" GYPSUM BOARD APPLIED HORIZONTALLY OR VERTICALLY.
 - SOUND ATTENUATION BATTS - THERMAFIBER TYPE SAFB MINERAL WOOL INSULATION, OR EQUAL.
 - GYPSUM BOARD - (1) LAYER OF 1/2" THICK USG "TYPE C" GYPSUM BOARD APPLIED HORIZONTALLY OR VERTICALLY, AND (1) LAYER OF 5/8" TYPE X GYP. BOARD.
 - INSULATION - 2" CONTINUOUS POLY-ISO INSULATION
 - EXTERIOR SHEATHING - ONE LAYER 5/8" DENSGLOSS GYPSUM WALLBOARD APPLIED PARALLEL OR AT RIGHT ANGLES TO WALL STUDS
 - JOINT TAPE AND COMPOUND - (NOT SHOWN) VINYL, DRY OR PREMIXED JOINT COMPOUND, APPLIED TO JOINTS AND SCREW HEADS; PAPER TAPE, 2" WIDE, EMBEDDED IN FIRST LAYER OF COMPOUND OVER ALL JOINTS.
 - BLOCKING - (NOT SHOWN) WOOD BLOCKING AS NEEDED FOR OTHER TRADES. GC TO COORDINATE.

1 WALL 01 - 3 HR FIRE WALL
1 1/2" = 1'-0"



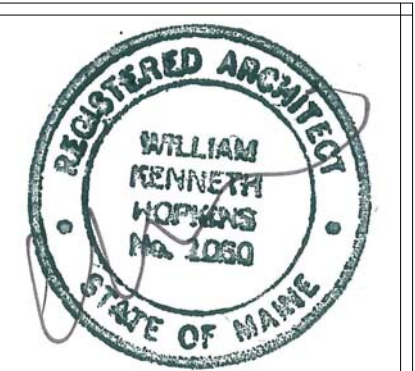
- W04** NON-RATED NON-BEARING EXTERIOR PARTITION
DESIGN NUMBER - N/A
- STUDS - 6" DEEP, 20 GA. STEEL STUD SPACE MAX 24" O.C.
 - GYPSUM BOARD - (1) LAYER 5/8" GYP. BD. APPLIED PERPENDICULAR TO FRAMING WITH 1" TYPE S STEEL SCREWS SPACED 8" O.C. GYP HELD UP FROM FLOOR MIN 1/4" TO 3/8" FOR INSTALLATION OF ACOUSTIC SEALANT - TYPICAL.
 - SOUND ATTENUATION BATTS - FIBERGLASS BATT WITH UL CLASS AS TO SURFACE BURNING CHARACTERISTICS AND OR FIRE RESISTANCE REQUIRED.
 - EXTERIOR SHEATHING - ONE LAYER 5/8" DENSGLOSS GYPSUM WALLBOARD APPLIED PARALLEL OR AT RIGHT ANGLES TO WALL STUDS
 - INSULATION - 2" CONTINUOUS RIGID INSULATION
 - ACM SYSTEM - METAL PANEL EXTRUSIONS AND CLIPS
 - METAL PANEL - ALUCOBOND ALUMINUM COPOSITE MATERIAL
 - AIR/MOISTURE BARRIER - PROVIDE CONTINUOUS BARRIER PROTECTION OVER EXTERIOR SHEATHING.
 - BLOCKING - (NOT SHOWN) WOOD BLOCKING AS NEEDED
 - JOINT TAPE AND COMPOUND - (NOT SHOWN) VINYL, DRY OR PREMIXED JOINT COMPOUND, APPLIED TO JOINTS AND SCREW HEADS; PAPER TAPE, 2" WIDE, EMBEDDED IN FIRST LAYER OF COMPOUND OVER ALL JOINTS.
 -

5 WALL 05 - EXTERIOR INSULATED METAL PANEL
1 1/2" = 1'-0"



- LABEL 2 HR** **W03** 2 HR EGRESS CORRIDOR
DESIGN NUMBER - UL - U411
- STUDS - CHANNEL-SHAPED, MIN 3-5/8" WIDE BY 1-1/4" DEEP WITH 5/16" FOLDED BACK RETURN FLANGE LEGS. FABRICATED FROM NO. 25 MSG GALV STEEL. MAX STUD SPACING 24" O.C. STUDS TO BE CUT 1" LESS THAN ASSEMBLY HEIGHT.
 - TYPE X GYP BOARD - 5/8 IN. THICK, 4 FT WIDE. GYPSUM BOARD SECURED TO STUDS WITH 1" LONG TYPE S-12 STEEL SCREWS SPACED 12" O.C. GYPSUM BOARD JOINTS ORIENTED VERTICALLY, LOCATED OVER STUDS AND OFFSET BETWEEN LAYERS. GYP HELD UP FROM FLOOR MIN 1/4" TO 3/8" FOR INSTALLATION OF ACOUSTIC SEALANT - TYPICAL.
 - EXTERIOR SHEATHING - ONE LAYER 5/8" DENSGLOSS GYPSUM WALLBOARD APPLIED PARALLEL OR AT RIGHT ANGLES TO WALL STUDS
 - FINISH FACE - FRP PANEL (CORRIDOR SIDE OF WALL ONLY)
 - CAULKING AND SEALANTS - A BEAD OF ACOUSTICAL SEALANT APPLIED AROUND THE PARTITION PERIMETER FOR SOUND CONTROL, BOTH SIDES OF WALL.
 - BLOCKING - (NOT SHOWN) WOOD BLOCKING AS NEEDED
 - TAPE AND COMPOUND - (NOT SHOWN) VINYL, DRY OR PREMIXED JOINT COMPOUND, APPLIED IN TWO COATS TO JOINTS AND SCREW HEADS; PAPER TAPE, 2 IN. WIDE, EMBEDDED IN FIRST LAYER OF COMPOUND OVER ALL JOINTS.
 - TOP OF EXISTING PARKING DECK
 - UNDERSIDE OF EXISTING PARK DECK

3 WALL 03 - 2 HR EGRESS CORRIDOR
1 1/2" = 1'-0"



Prepared For: Owner	Project: Ocean Gateway Addition	Revisions: 05/04/2017 - REVISED BID SET
P.O. Box 7486 Portland, ME 04112	167 Fore Street Portland, Maine	
Architect: ARCHETYPE Architects 48 Union Wharf Portland, Maine 04101 (207) 772-6022 ARCHETYPE@ARCHETYPEPA.COM	Date: 03 / 03 / 2017	Scale: 1 1/2" = 1'-0"
Wall Types		A4.00