

Copyright Reserved

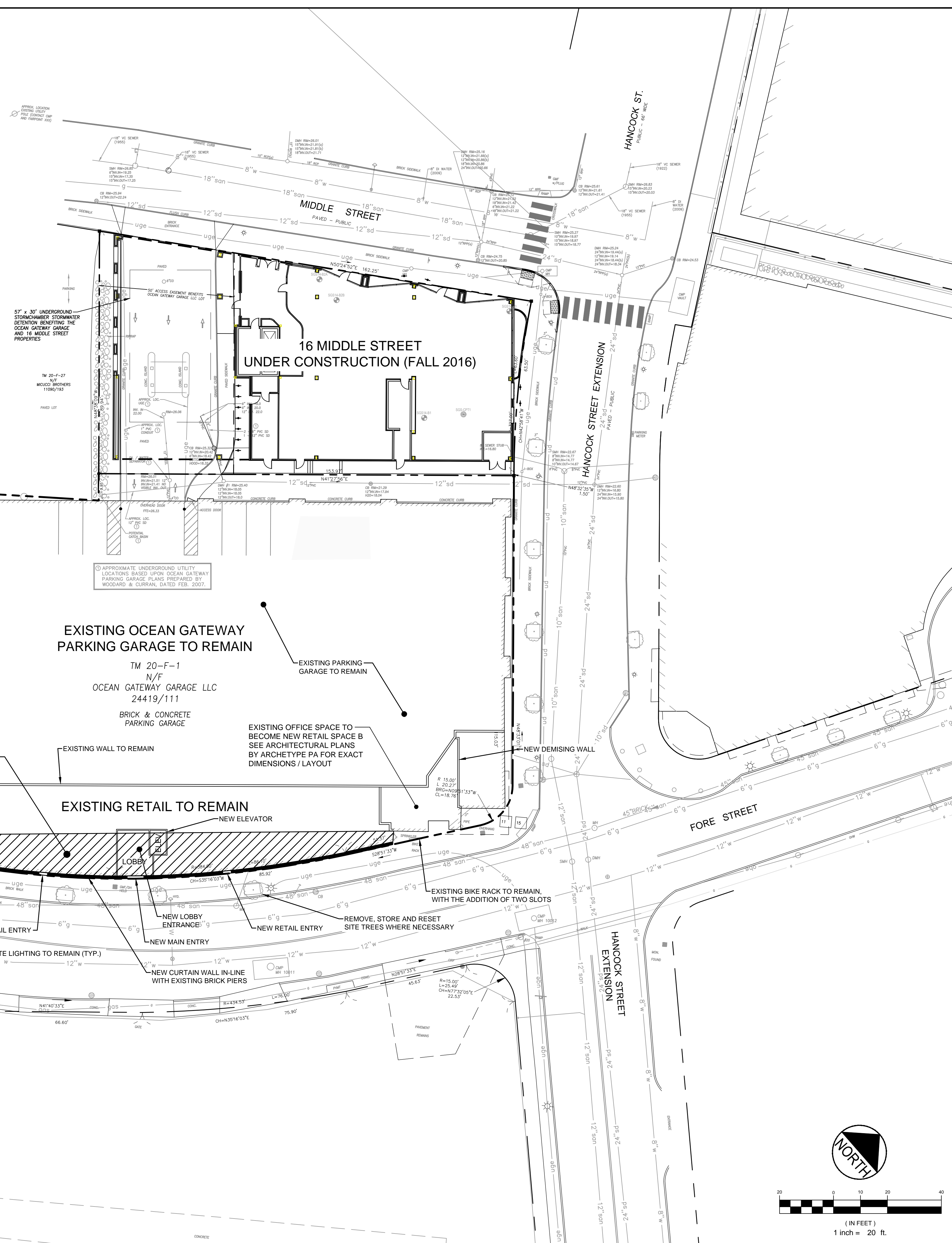
The Contractor shall verify and be responsible for all dimensions. DO NOT scale the drawing - any errors or omissions shall be reported to Stantec without delay.
The Copyrights to all designs and drawings are the property of Stantec. Reproduction or use for any purpose other than that authorized by Stantec is forbidden.

Consultants

Notes

PLAN REFERENCES:

1. "EXISTING CONDITIONS PLAN", OCEAN GATEWAY PARKING GARAGE, PREPARED FOR RIVERWALK, LLC, 2 MARKET STREET, SUITE 500, PORTLAND, MAINE 04101, PREPARED BY WOODARD & CURRAN OF PORTLAND, MAINE, SHEET C100, LATEST REVISION OF 2/22/07.
2. "UTILITY PLAN", OCEAN GATEWAY PARKING GARAGE, PREPARED FOR RIVERWALK, LLC, 2 MARKET STREET, SUITE 500, PORTLAND, MAINE 04101, PREPARED BY WOODARD & CURRAN OF PORTLAND, MAINE, SHEET C100, LATEST REVISION OF 8/10/07.
3. "SUBDIVISION/RECORDING PLAN ON INDIA STREET AND FORE STREET, PORTLAND, MAINE", MADE FOR RECORD OWNERS RIVERWALK, LLC, 25 INDIA LLC, HANCOCK & MIDDLE LLC, OCEAN GATEWAY GARAGE LLC, 2 MARKET STREET, SUITE 500, PORTLAND, MAINE, PREPARED BY OWEN HASKELL, INC. OF PORTLAND, MAINE, DRAWING NO. 1B, LATEST REVISION OF 04-13-06.
4. "OFF-SITE DRAINAGE PLAN, RESIDENCE INN BY MARIOTT - PORTLAND, MAINE", PREPARED FOR SUMMIT HOTEL PROPERTIES, LLC, PREPARED BY GORRILL-PALMER CONSULTING ENGINEERS, INC. OF GRAY, MAINE, DRAWING NO. C103, LATEST REVISION OF 11/05/07.
5. "PORTLAND SEWER SYSTEM, INFILTRATION-INFLOW ANALYSIS, SYSTEM BASE MAPPING, STUDY AREA IV", PREPARED FOR PORTLAND WATER DISTRICT, PREPARED BY HUNTER-BALLEW ASSOCIATES OF FALMOUTH, MAINE, DRAWING NO. IV-4, LATEST REVISION OF 11-14-03.
6. "EXISTING CONDITIONS PLAN AND DEMOLITION PLAN, HANCOCK STREET CONSTRUCTION, BID #5607", PREPARED FOR CITY OF PORTLAND DEPARTMENT OF PUBLIC WORKS, PORTLAND, MAINE, PREPARED BY WOODARD & CURRAN OF PORTLAND, MAINE, SHEET C100, LATEST REVISION OF 01/12/07.
7. "HANCOCK STREET PLAN & PROFILE, STA. 0+00 TO STA. 3+32, HANCOCK STREET CONSTRUCTION, BID #5607", PREPARED FOR CITY OF PORTLAND DEPARTMENT OF PUBLIC WORKS, PORTLAND, MAINE, PREPARED BY WOODARD & CURRAN OF PORTLAND, MAINE, SHEET C202, LATEST REVISION OF 01/12/07.
8. "PLAN OF LAND STANDARD BOUNDARY SURVEY, ON FORE, INDIA, MIDDLE, NEWBURY, HANCOCK & MOUNTFORT STREETS, PORTLAND, MAINE", FOR SHIPYARD BREWING COMPANY, PREPARED BY OWEN HASKELL, INC. OF PORTLAND, MAINE, DRAWING NO. 1, LATEST REVISION OF 9/1/94.
9. "AMENDED RECORDING PLAT, 185 FORE STREET, FORE STREET, PORTLAND, MAINE", MADE FOR RECORD OWNER EAST INDIA LAND COMPANY LLC, c/o SHIPYARD BREWING COMPANY, 86 NEWBURY STREET, PORTLAND, MAINE, PREPARED BY OWEN HASKELL, INC. OF FALMOUTH, MAINE, DRAWING NO. C-2.1, LATEST REVISION OF 10/27/15.
10. "AMENDED RECORDING PLAT, 16 MIDDLE STREET, MIDDLE STREET, PORTLAND, MAINE", MADE FOR RECORD OWNER EIGHT MIDDLE LAND COMPANY LLC, c/o SHIPYARD BREWING COMPANY, 86 NEWBURY STREET, PORTLAND, MAINE, PREPARED BY OWEN HASKELL, INC. OF FALMOUTH, MAINE, DRAWING NO. C-2.1, LATEST REVISION OF 2/18/16.
11. "ALTA/ACSM LAND TITLE SURVEY, INDIA STREET, FORE STREET & HANCOCK STREET EXTENSION, PORTLAND, CUMBERLAND COUNTY, MAINE", MADE FOR PORTLAND NORWICH GROUP, LLC, OWNER OF RECORD: OCEAN GATEWAY GARAGE, LLC, PREPARED BY OWEN HASKELL, INC. OF FALMOUTH, MAINE, LATEST REVISION OF NOVEMBER 30, 2015.



APPROXIMATE UNDERGROUND UTILITY LOCATIONS BASED UPON OCEAN GATEWAY PARKING GARAGE PLANS PREPARED BY WOODARD & CURRAN, DATED FEB. 2007.

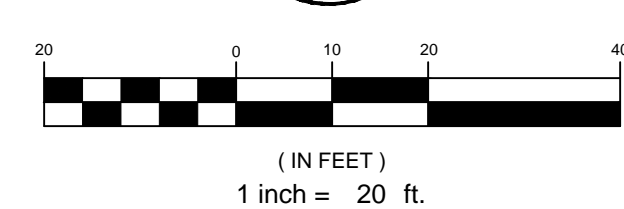
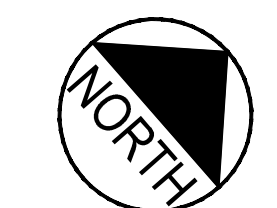
EXISTING OCEAN GATEWAY PARKING GARAGE TO REMAIN

TM 20-F-1
N/F
OCEAN GATEWAY GARAGE LLC
24419/111
BRICK & CONCRETE
PARKING GARAGE

EXISTING RETAIL TO REMAIN

NEW ELEVATOR

NEW CURTAIN WALL IN-LINE WITH EXISTING BRICK PIERS



V:\195350140\Civil\Construction Set\195350140-Civil-Construction Set.dwg (date: 8/20/16 2:32 PM)

2016.07.13
 SRB
 Appr.
 2016.07.13
 CDD
 By
 1 ISSUED TO CLIENT
 Revision

File Name: SP-M150-BASE CDD SRB SRB 2016.07.13
DWN. CHKD. DSGN. DATE

Permit-Seal

P. E. STEPHEN R. BUSHEY
LIC. #7429

Client/Project
PREPARED FOR
ARCHETYPE PA
ADDITION TO OCEAN GATEWAY GARAGE

167 FORE STREET, PORTLAND, MAINE

Title
SITE PLAN

Project No. 195350140 Scale 1" = 20'

Sheet C-1.1