

GENERAL CONTRACTOR

STRUCTURAL ENGINEER

MEP ENGINEER

CLIENT

India Middle Junction, LLC
 207 Fore Street, #12
 Portland, ME 04103

PROJECT
Existing Mercantile Expansion
 47 India Street
 Portland, ME 04101



ISSUED FOR PERMIT

INFORMATION

Path: M:/boulos/india st

Issue Date: 05/27/14

Drawn By: djg

Checked By:

Revision:

- 1.
- 2.
- 3.
- 4.

TITLE

LIFE SAFETY PLAN
 AND CODE REVIEW

SCALE

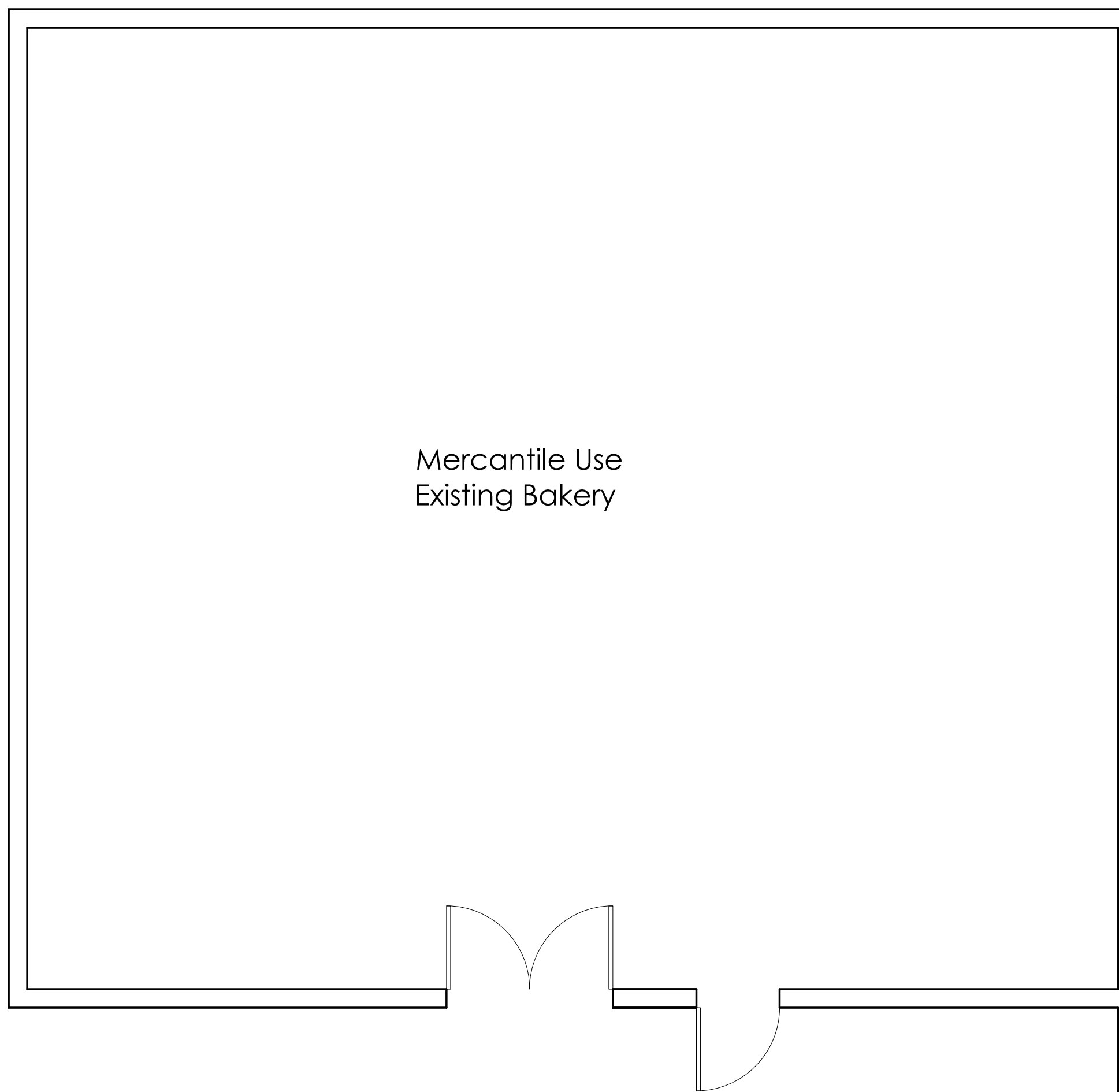
1/4"=1'-0"

© 2014 Graham Architects. All rights reserved. Information, material, and designs in this document are proprietary to and owned by Graham Architects, and may not be disclosed to any third party, reproduced, posted on a global computer information network, or distributed in any way without the written consent from Graham Architects.

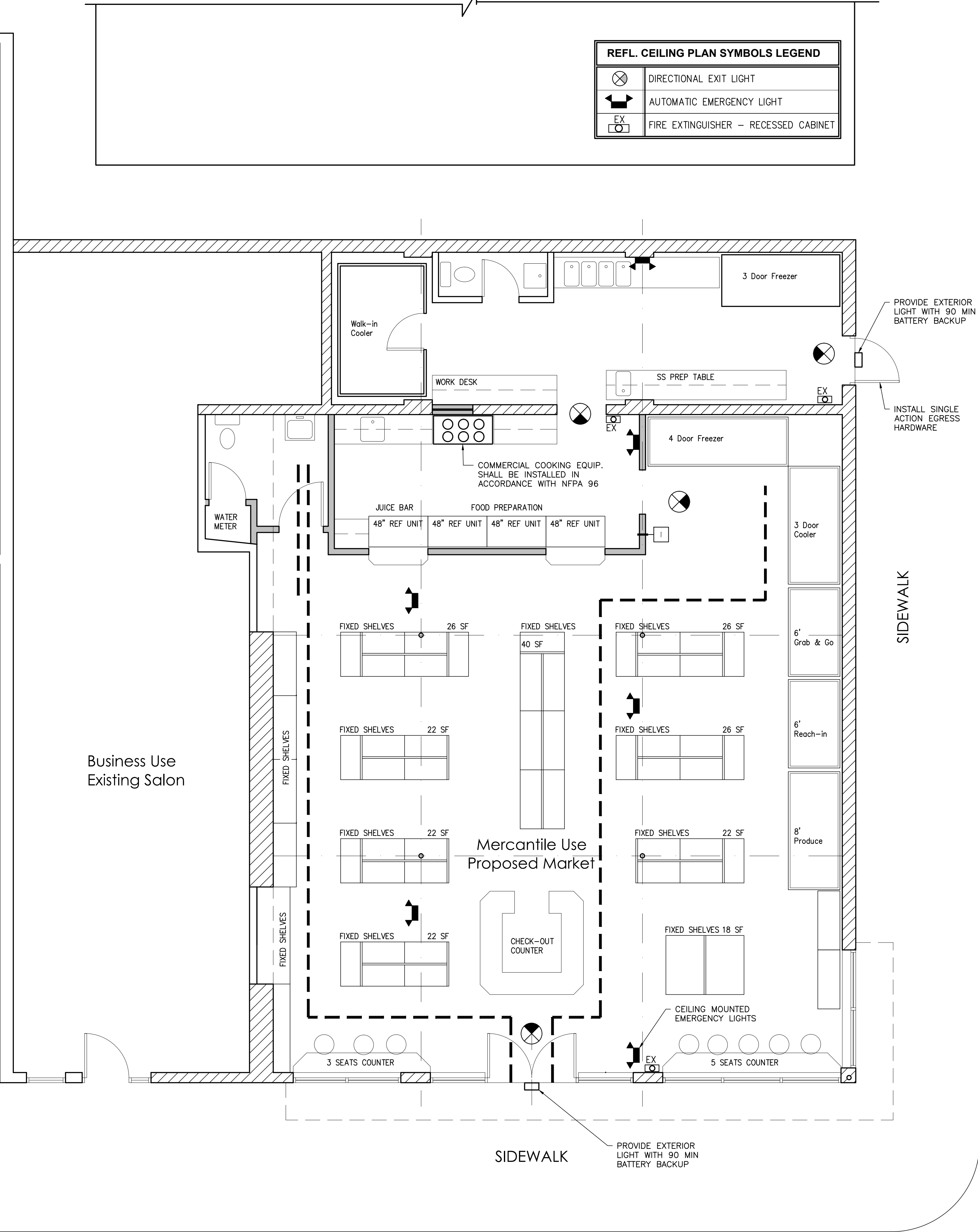
A-5

REFL. CEILING PLAN SYMBOLS LEGEND

	DIRECTIONAL EXIT LIGHT
	AUTOMATIC EMERGENCY LIGHT
	FIRE EXTINGUISHER - RECESSED CABINET



Mercantile Use
Existing Bakery



Business Use
Existing Salon

Mercantile Use
Proposed Market

SIDEWALK

SIDEWALK

PROJECT DATA

USE			
OCCUPANCY CLASSIFICATION	MERCANTILE	MERCANTILE (C)	NFPA CHAPTER 36 NEW - MERCANTILE OCCUPANCIES
OCCUPANCY CALCULATION			
GROSS S.F. AREA	2,137 S.F.		
Storage Stock and Preparation	556 S.F.	556/300	1.8
Display Area, open to public without shelving	1,581 S.F.	1,581/30	52.7
CALCULATED OCCUPANT LOAD BASED ON GROSS SQUARE FOOTAGE: 54.5			
ALTERNATE OCCUPANCY CALCULATION PER IBC 1004.1.1 AREAS WITHOUT FIXED SEATING, EXCEPTION 1, PROPOSED TRAVEL DISTANCE TO EXIT WILL BE 56'-4"			
Storage Stock and Preparation	556 S.F.	556/300	1.8
Display Area, open to public with shelving & equipment	1,004 S.F.	1,004/30	33.5
Non Fixed Seating			8.0
CALCULATED OCCUPANT LOAD BASED ON DESIGN OCCUPANT LOAD SQUARE FOOTAGE: 43.3			
EXITS AND EXIT ACCESS DOORWAYS			
	REQUIRED	PROVIDED	
EXITS	2	2	IBC 2009 1014.2, EXCEPTION 2.1 THRU 2.4, OR NFPA 36.2.5.11, 1 THRU 4
DOOR WIDTH	32" MINIMUM	60" & 36"	
COMMON PATH OF TRAVEL	75'-0"	8'-10"	
EXIT ACCESS TRAVEL DISTANCE (W/O SPRINKLERS)	150'-0" (NFPA)	56'-0"	200 FEET PER IBC 2009 TABLE 1016.1
DEAD END CORRIDORS	20'-0"	NA	
BUILDING ELEMENT - FIRE RESISTANCE RATING			
STRUCTURAL FRAME	0	0	
INCLUDING COLUMNS, GIRDERS, TRUSSES			
BEARING WALLS			
EXTERIOR	0	0	
INTERIOR	0	0	
NON BEARING WALLS AND PARTITIONS			
EXTERIOR	0	0	
NON BEARING WALLS AND PARTITIONS			
INTERIOR	0	0	
FLOOR CONSTRUCTION			
INCLUDING SUPPORTING BEAMS & JOISTS			
0	0	0	
ROOF CONSTRUCTION			
INCLUDING SUPPORTING BEAMS & JOISTS			
0	0	0	
BUILDING HEIGHTS AND AREAS			
AREA	9,000 S.F.	6,223 S.F.	
HEIGHTS			
STORIES	2 STORIES	2 STORIES	
FEET	36 FT	26 FT	
EGRESS WIDTH:			
OCCUPANTS x (0.2 - OTHER EGRESS COMPONENTS)			
42 x 0.2 = 8.4' WIDTH REQUIRED	8.4'	36'	
PLUMBING FIXTURES			
WATER CLOSETS - MEN/WOMEN	1	1	
LAVATORIES - MEN/WOMEN	1	1	
DRINKING FOUNTAIN	1	BOTTLED WATER DISPENSOR WILL BE PROVIDED AS AN ALTERNATE (NATIONAL PLUMBING CODE 410.1)	
UTILITY SINK	1	1	
SPRINKLER			
NOT REQUIRED PER NFPA 36.3.5	MERCANTILE OCCUPANCY MEETS NFPA 3.3.253 REQUIREMENTS OF A STREET FLOOR OCCUPANCY		