

GENERAL CONTRACTOR

STRUCTURAL ENGINEER

MEP ENGINEER

CLIENT

India Middle Junction, LLC
 207 Fore Street, #12
 Portland, ME 04103

PROJECT
Existing Mercantile Expansion
 47 India Street
 Portland, ME 04101



ISSUED FOR PERMIT

INFORMATION

Path: M:/boulos/india st

Issue Date: 05/27/14

Drawn By: djg

Checked By:

Revision:

- 1.
- 2.
- 3.
- 4.

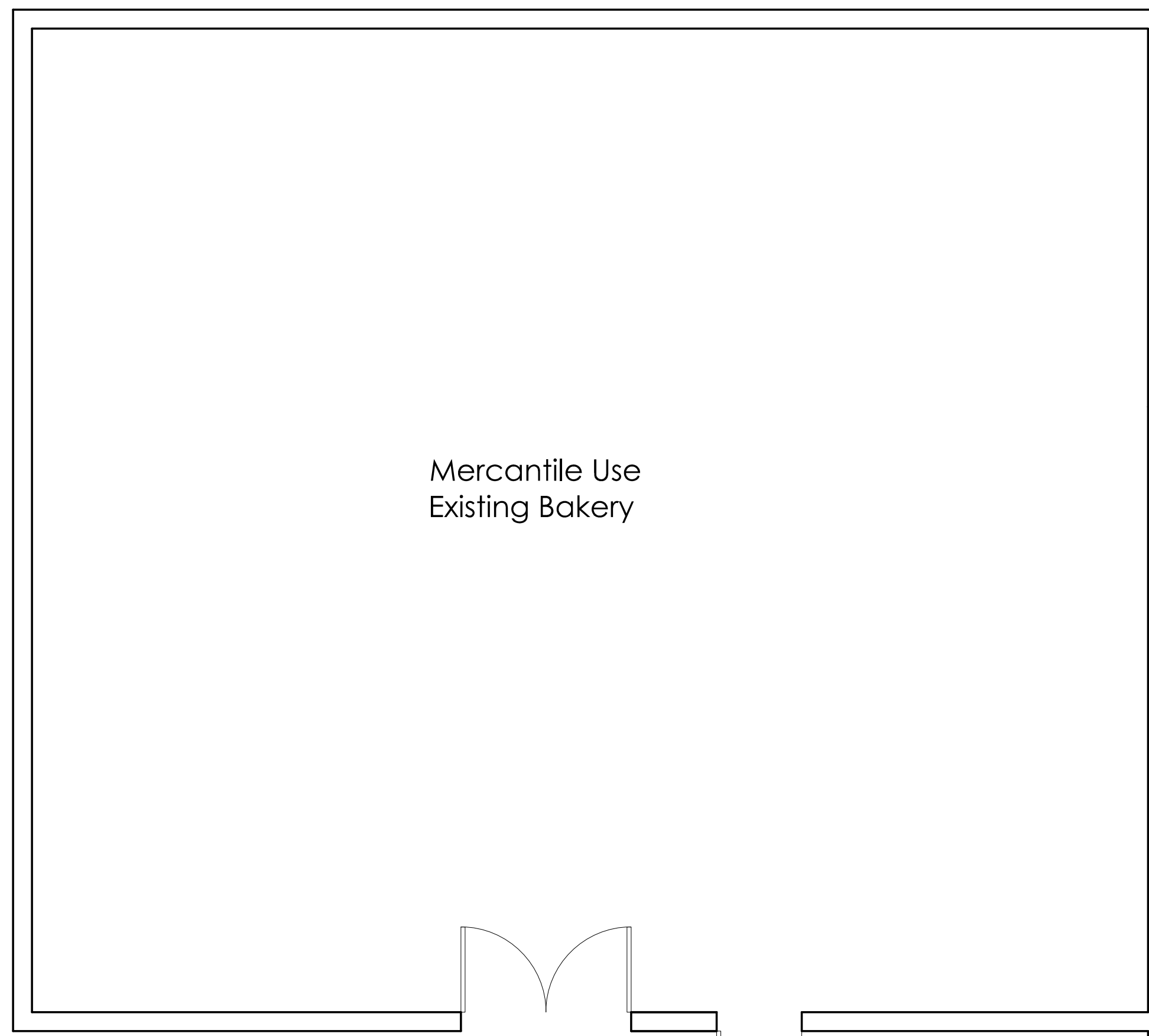
TITLE

REFLECTED CEILING PLAN

SCALE

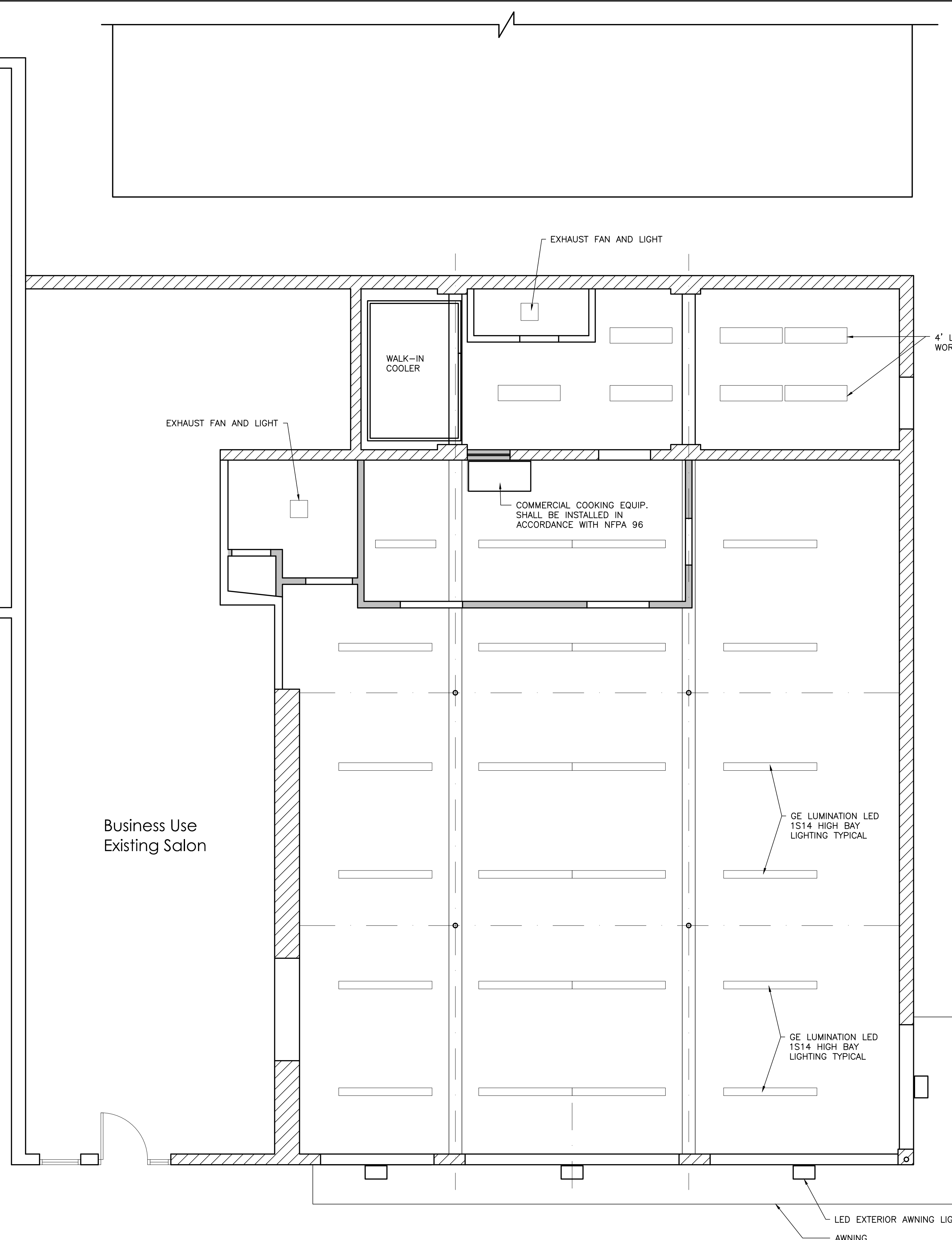
1/4"=1'-0"

© 2014 Graham Architects. All rights reserved. Information, material, and designs in this document are proprietary to and owned by Graham Architects, and may not be disclosed to any third party, reproduced, posted on a global computer information network, or distributed in any way without the written consent from Graham Architects.



Mercantile Use
Existing Bakery

Business Use
Existing Salon



EXHAUST FAN AND LIGHT

WALK-IN COOLER

EXHAUST FAN AND LIGHT

COMMERCIAL COOKING EQUIP.
SHALL BE INSTALLED IN
ACCORDANCE WITH NFPA 96

4' LUMINATION BL SERIES
WORK SPACE LIGHTING

GE LUMINATION LED
1S14 HIGH BAY
LIGHTING TYPICAL

GE LUMINATION LED
1S14 HIGH BAY
LIGHTING TYPICAL

LED EXTERIOR AWNING LIGHT
AWNING