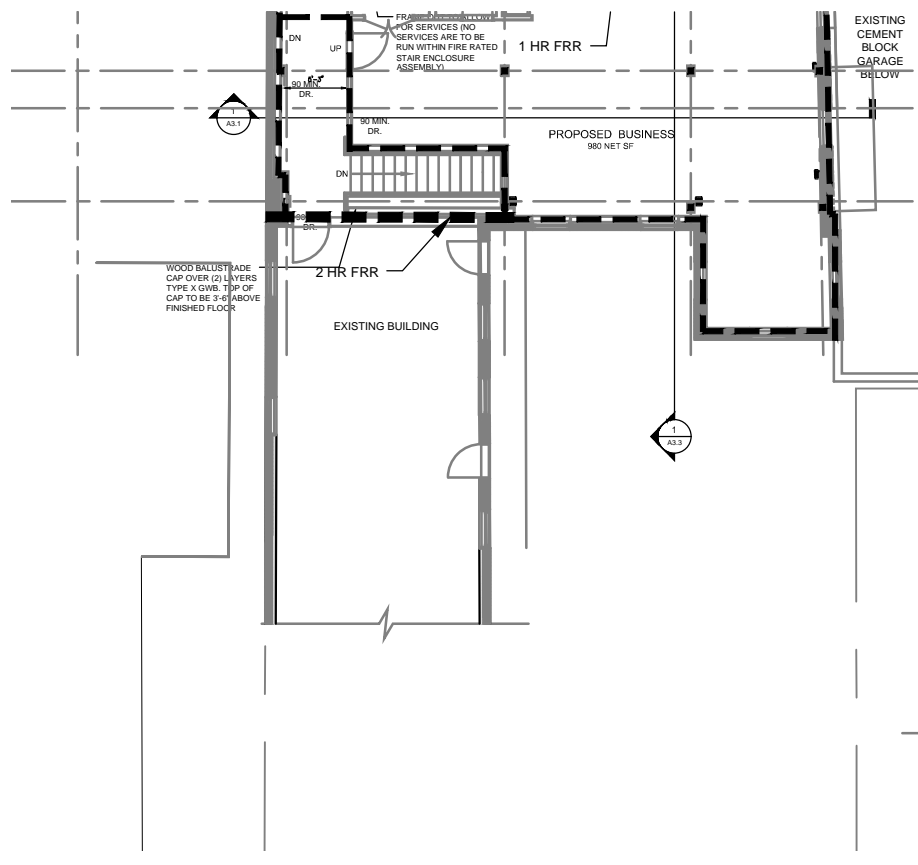
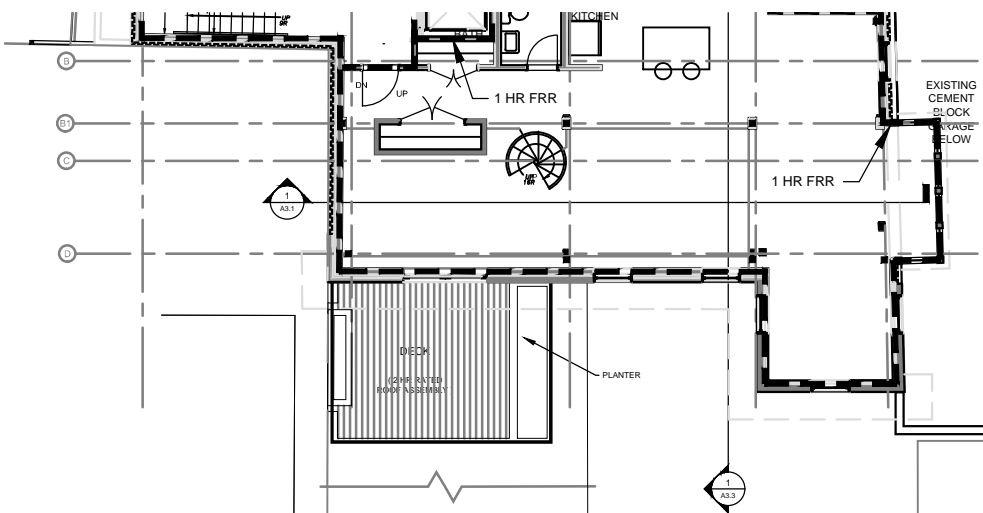


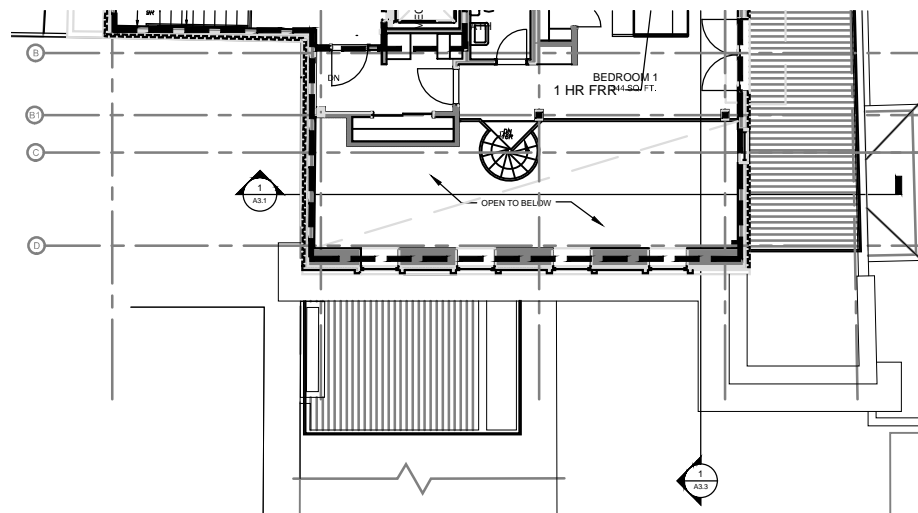
1ST. FLOOR



2ND. FLOOR



3RD. FLOOR



MEZZANINE LEVEL

CODE SUMMARY

Building Code: IBC 2009
NFPA 101 2006

Occupancy: IBC Business Group B
IBC Residential Group R-2
IBC Mercantile Group M
NFPA Business
NFPA Residential
NFPA Mercantile

No. of Floors: 3

Construction: IBC Type 5A
NFPA 5 (111)

Sprinkler: NFPA 13 compliant
areas served:
New 3-floor addition w/ Mezz.
and adjacent 1-Story
and 2-Story structures

Fire Ratings:
IBC Table 601 Structural frame 1Hr
IBC Table 601 Exterior walls (<30' sep dist) 1Hr
IBC Table 601 Exterior walls (≥30' sep dist) 0Hr
IBC Table 601 Interior walls (bearing) 1Hr
IBC Table 601 Interior walls (non bearing) 0Hr
IBC Table 601 Floors 1Hr
IBC Table 601 Roof 1 Hr
IBC 302.3.2 Occ. use separation 1 and 2Hr
IBC 1020 Stairs (< 4 floors) 1Hr
IBC 707 Fire Barriers 1and 2 Hr
IBC 1014.3.4 R-2 Common path = 125' max.
IBC 1014.3 B Common path = 100' max.
IBC 1015.1 One Means of egress
IBC 1016.1 Exit travel dist = 250' max.
IBC 1021.2 R-2 travel distance = 50' max.

FLOOR AREAS

(New 3-story addition only)	
1st Floor (Mercantile)	425
1st Floor circulation	
2nd Floor (Business)	615
2nd Floor circulation	
3rd Floor (Business)	375
3rd Floor circulation	

Total Area (square feet) 1,415 (gross)

ENGINEER OF RECORD

RESURGENCE

ENGINEERING & PRESERVATION, INC.
132 BRENTWOOD STREET
PORTLAND, ME 04103
207.773.4880

Drawn By: EJA
Checked By: Alfred H. Hodson III P.E.

OFFICE ADDITION
61 INDIA STREET
PORTLAND, ME

Drawing:
CODE SUMMARY & FIRE
PROTECTION

Scale:
AS SHOWN

Date: 06/04/13
Issued for: Prelim. Review

G3.001