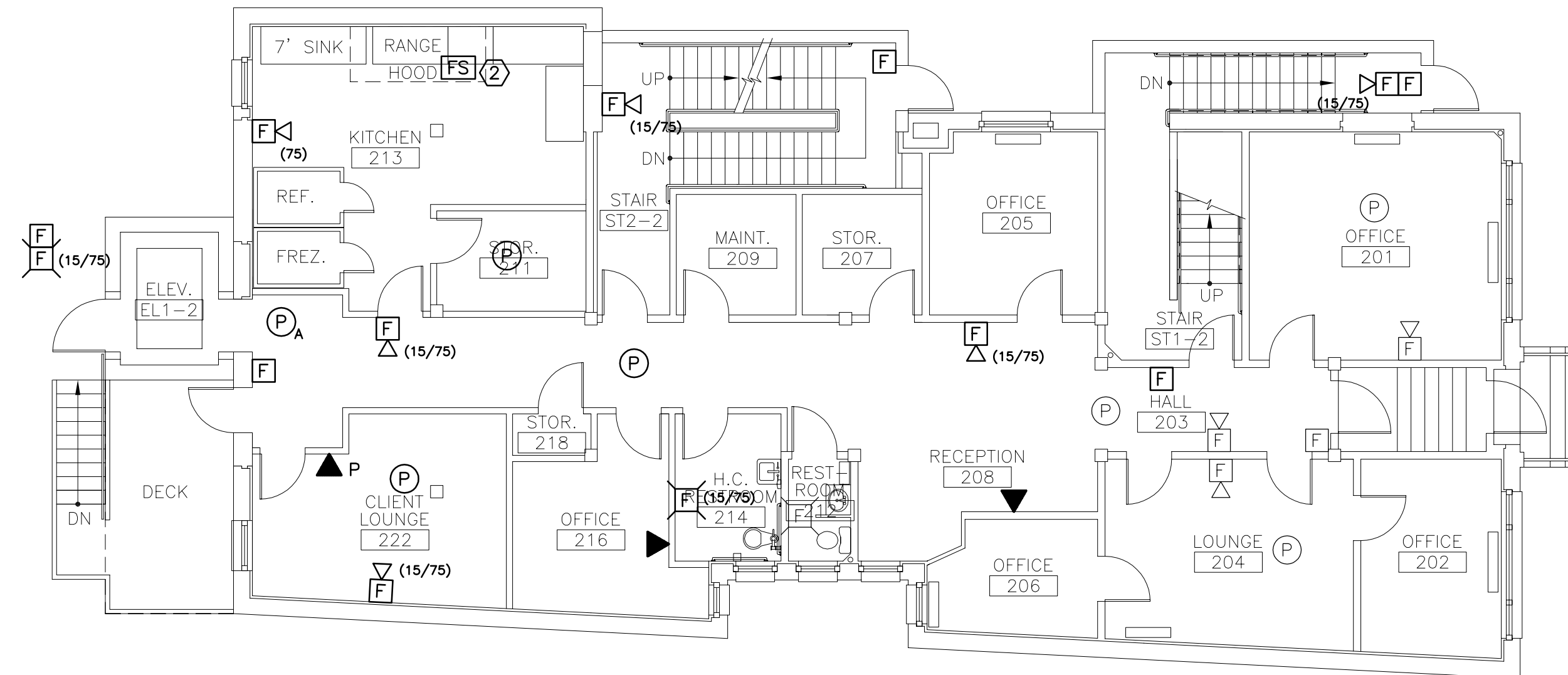


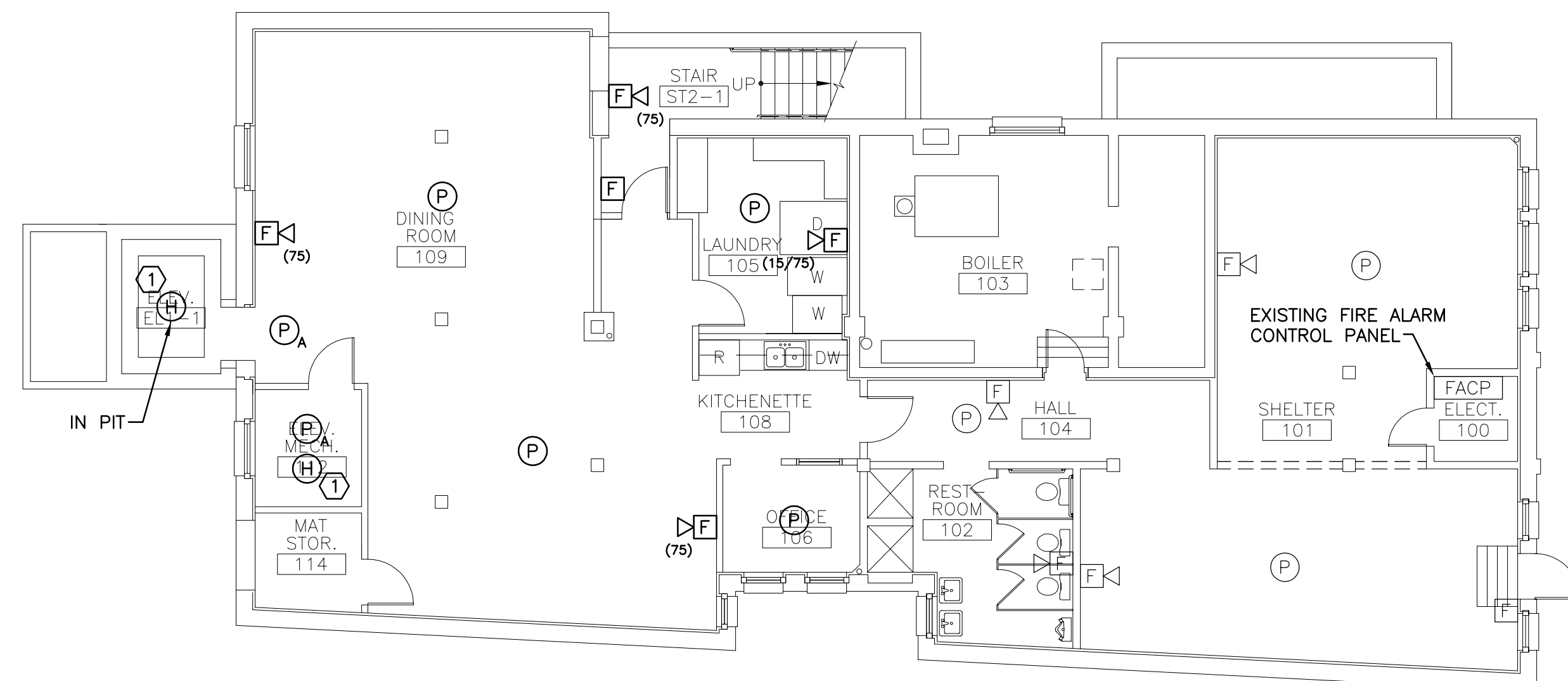
**K1** THIRD FLOOR PLAN

1/8"=1'-0"



**F1** SECOND FLOOR PLAN

1/8"=1'-0"



**A1** FIRST FLOOR PLAN

1/8"=1'-0"

**NOTES:**

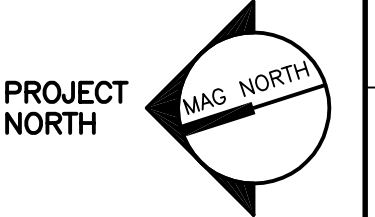
- SEE SHEET E-001 FOR LEGEND AND GENERAL NOTES.
- NEW FIRE ALARM INITIATING DEVICES (EXCEPT FOR DEVICES ASSOCIATED WITH ELEVATOR) TO BE TIED INTO EXISTING FIRST AND SECOND FLOOR INITIATING ZONES.
- SMOKE DETECTORS IN ELEVATOR MACHINE RM AND ELEVATOR LOBBY TO BE TIED INTO ELEVATOR CONTROL PANEL FOR RECALL FUNCTION. HEAT DETECTORS IN ELEVATOR PIT AND MACHINE ROOM TO BE TIED INTO ELEVATOR CONTROL PANEL AND SHUNT TRIP CIRCUIT BREAKER FOR ELEVATOR POWER. ALL DEVICES ASSOCIATED WITH ELEVATOR TO BE ON SEPERATE ZONE.
- EXTEND EXISTING FIRE ALARM NOTIFICATION CIRCUIT TO NEW DEVICES SHOWN. FIRE ALARM EQUIPMENT SUPPLIER TO VERIFY THAT EXISTING POWER SUPPLY HAS SUFFICIENT CAPACITY FOR NEW DEVICES. CONTRACTOR TO FURNISH AND INSTALL ALL DEVICES, CONDUIT, WIRING, POWER EXTENDERS AND EQUIPMENT FOR A COMPLETE AND OPERABLE SYSTEM.
- THIRD FLOOR INITIATING DEVICES SHALL BE WIRED TO A SEPARATE ZONE IN FACP.

**KEYED NOTES:**

- MOUNT HEAT DETECTOR WITHIN 24" OF SPRINKLER HEAD. DETECTOR TO RESPOND AT LOWER TEMPERATURE THEN SPRINKLER.
- WIRE FLOW SWITCH FOR HOOD SUPPRESSION SYSTEM TO EXISTING FIRE ALARM CONTROL PANEL.



ARCHITECTURE ENGINEERING PLANNING  
 SMART  
 144 Fore Street, P.O. Box 618  
 Portland, Maine 04104  
 tel. (207) 772-3846  
 fax. (207) 772-1070



PROJECT TITLE: THE MILESTONE FOUNDATION  
 INDIA STREET, PORTLAND  
 CURRENT ISSUE STATUS: ISSUED FOR CONSTRUCTION  
 4-11-03

| REV | DESCRIPTION             | DATE    |
|-----|-------------------------|---------|
| 0   | ISSUED FOR CONSTRUCTION | 4-11-03 |

GRAPHIC SCALE:  
 0" 1"  
 SCALE: 1/8"=1'-0"  
 PROJECT MANAGER: JLH  
 JC/DRAWN BY: RJL/LAM  
 A/E OF RECORD: DJT  
 SMRT CAD FILE: EY101-03017  
 PROJECT NO: 03017  
 DATE: 4-11-03

SHEET TITLE:  
 SYSTEMS FLOOR PLANS

SHEET No.  
 EY101