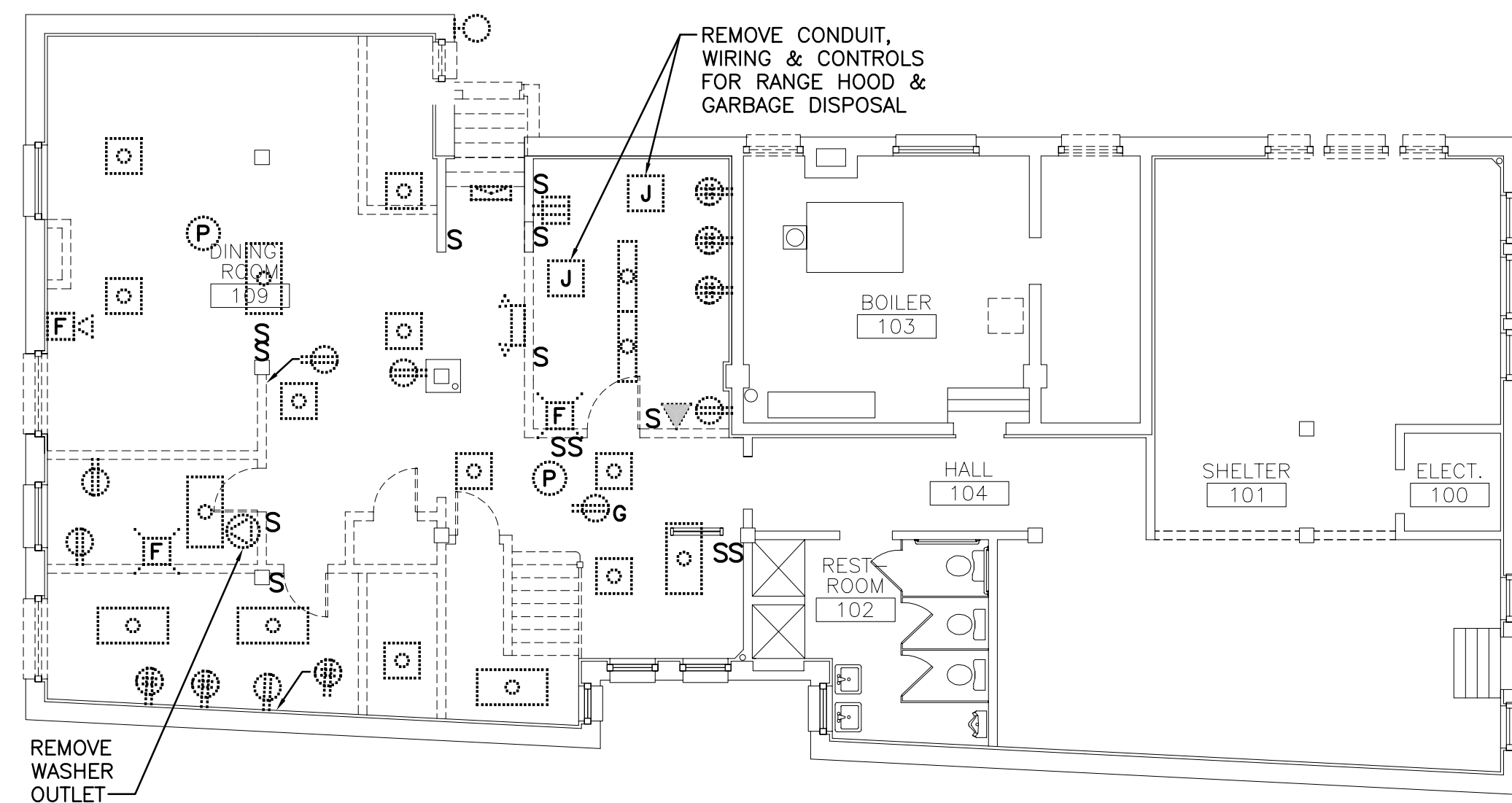


H1 SECOND FLOOR DEMOLITION PLAN

1/8"=1'-0"

*



A1 FIRST FLOOR DEMOLITION PLAN

1/8"=1'-0"

*

NOTES:

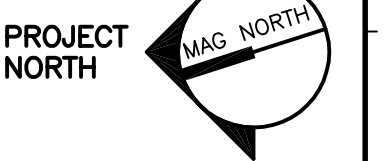
- SEE SHEET E-001 FOR LEGEND AND GENERAL NOTES.
- REMOVE RECEPTACLES, SWITCHES, LIGHTS, ETC. IN ALL DEMOLITIONED WALLS & CEILINGS. REMOVE ALL CONDUIT & WIRING FOR RELOCATED KITCHEN EQUIPMENT. FIRE ALARM NOTIFICATION DEVICES AND SMOKE DETECTORS MAY BE RE-USED IF SUITABLE FOR NEW LAYOUT.

KEYED NOTE:

- REMOVE EXISTING PANELBOARD P1 AND RELOCATE TO THIRD FLOOR AND LABEL P-3. SEE DRAWING EP101 FOR NEW LOCATION. RE-USE FEEDER FOR NEW PANELBOARD P-1 AT LOCATION SHOWN ON EP101. EXTEND FEEDER AS REQUIRED TO ACCOMMODATE NEW LOCATION. EXTEND ANY REMAINING BRANCH CIRCUITS FED FROM PANELBOARD P-1 TO NEW LOCATION.



ARCHITECTURE ENGINEERING PLANNING
SMRT
144 Fore Street/P.O. Box 618
Portland, Maine 04104
tel. (207) 772-3846
fax. (207) 772-1070



PROJECT TITLE: THE MILESTONE FOUNDATION
INDIA STREET, PORTLAND
CURRENT ISSUE STATUS: ISSUED FOR CONSTRUCTION
4-11-03

REV	DESCRIPTION	DATE
0	ISSUED FOR CONSTRUCTION	4-11-03

GRAPHIC SCALE:
0" 1"
SCALE: 1/8"=1'-0"
PROJECT MANAGER: JLH
JC/DRAWN BY: RJL/LAM
A/E OF RECORD: DJT
SMRT CAD FILE: ED101-03017
PROJECT NO: 03017
DATE: 4-11-03

SHEET TITLE:
DEMOLITION PLANS

SHEET No.
ED101