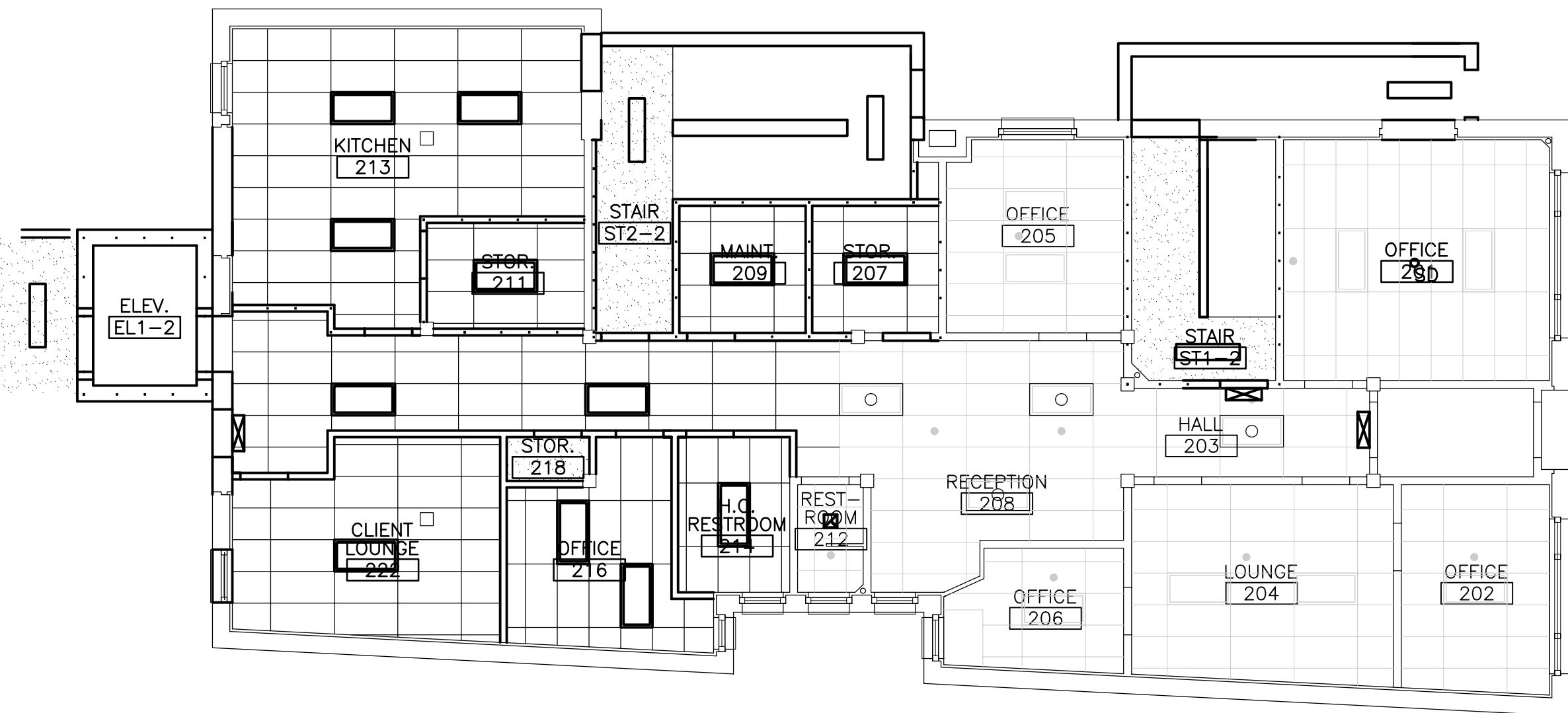


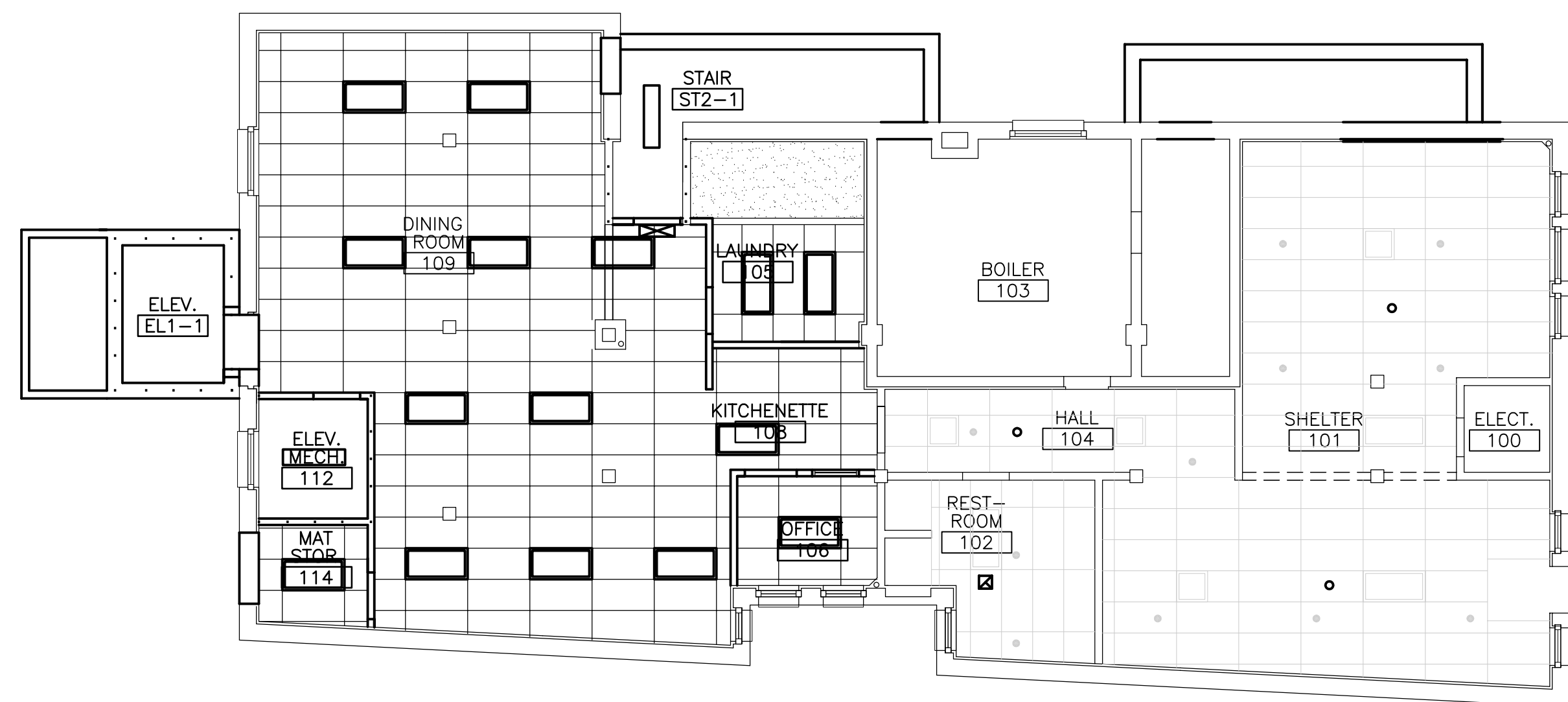
K1 THIRD FLOOR REFLECTED CEILING PLAN

1/8"=1'-0"



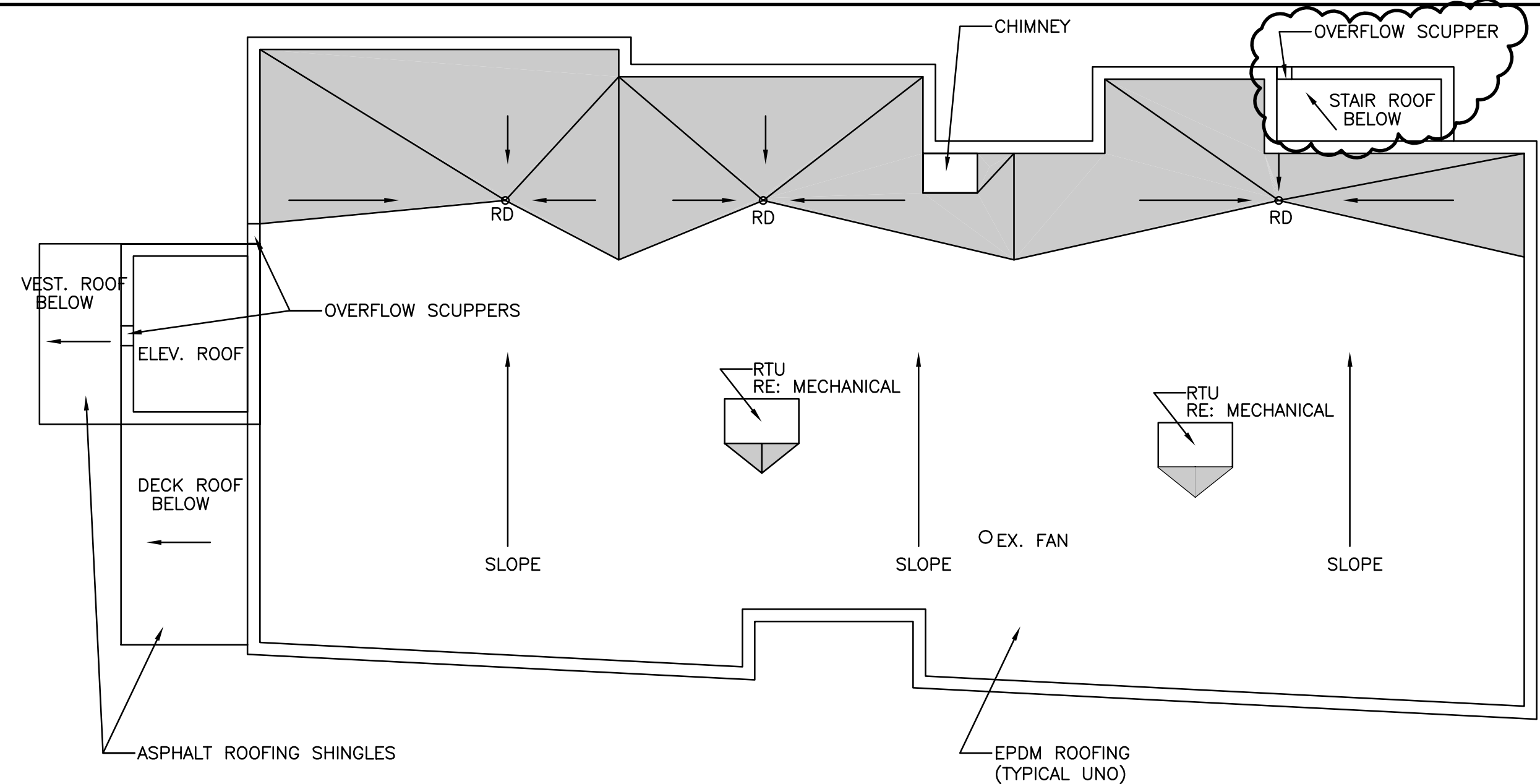
F1 SECOND FLOOR REFLECTED CEILING PLAN

1/8"=1'-0"



A1 FIRST FLOOR REFLECTED CEILING PLAN

1/8"=1'-0"



A9 ROOF PLAN

1/8"=1'-0"

REFLECTED CEILING NOTES

1. FIRE SPRINKLERS SHALL BE LOCATED IN ALIGNMENT WITH OTHER CEILING ITEMS, TYPICALLY, FIRE SPRINKLERS SHALL BE CENTERED IN CEILING TILE SQUARES (2x2) OR 2x4.
2. FIRE SPRINKLERS SHALL BE PLACED TO COORDINATE WITH LIGHT FIXTURE POSITIONS INDICATED.
3. ALIGN CEILING ITEMS AS SHOWN, WITH COMMON CENTERLINES, TYPICALLY, CENTER ITEMS IN CEILINGS, OR IN AREAS UNLESS INDICATED OTHERWISE.
4. REFER TO ROOM FINISH SCHEDULE FOR CEILING HEIGHTS AND CEILING FINISHES TO BE PROVIDED.
5. IN ROOMS WITH NO CEILINGS, COORDINATE LIGHT FIXTURE, DUCTWORK AND EQUIPMENT LOCATIONS.

SYMBOL LEGEND

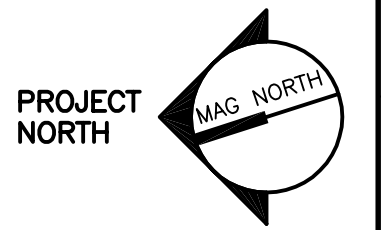
- 2x4 SUSPENDED CEILING PANEL AND GRID ASSEMBLY.
- 2x2 SUSPENDED CEILING PANEL AND GRID ASSEMBLY.
- GWB CEILING.
- 2x4 LAY-IN LIGHT FIXTURE.
- 1x4 PENDANT LIGHT FIXTURE.
- DOWN LIGHT.
- CEILING MOUNTED EXIT LIGHT.
- RETURN AIR GRILLE.
- SUPPLY AIR GRILLE.
- EXHAUST AIR GRILLE.

ROOF LEGEND

- TAPERED ROOF INSULATION.



ARCHITECTURE ENGINEERING PLANNING
 SMART
 144 Fore Street/P.O. Box 618
 Portland, Maine 04104
 tel. (207) 772-3846
 fax. (207) 772-1070



PROJECT TITLE:
THE MILESTONE FOUNDATION
 INDIA STREET, PORTLAND

REVISIONS
7-8-03

REV	DESCRIPTION	DATE
0	ISSUED FOR CONSTRUCTION	4-17-03
1	REVISED PER V.E.	7-8-03

GRAPHIC SCALE:
 0" = 1"

SCALE: 1/8"=1'-0"
 PROJECT MANAGER: JLH
 JC/DRAWN BY: RJL
 A/E OF RECORD: JLH
 SMRT CAD FILE: AE102-03017
 PROJECT NO: 03017
 DATE: 4-17-03
 SHEET TITLE:
REFLECTED CEILING PLANS AND ROOF PLAN
 SHEET No.
AE102