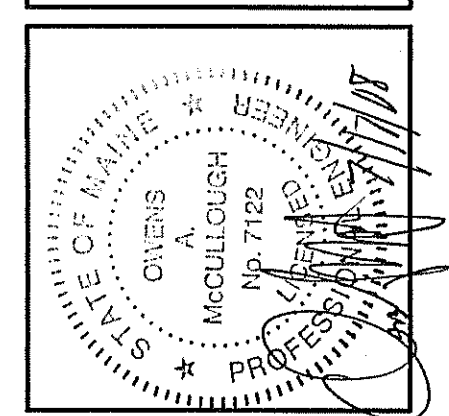
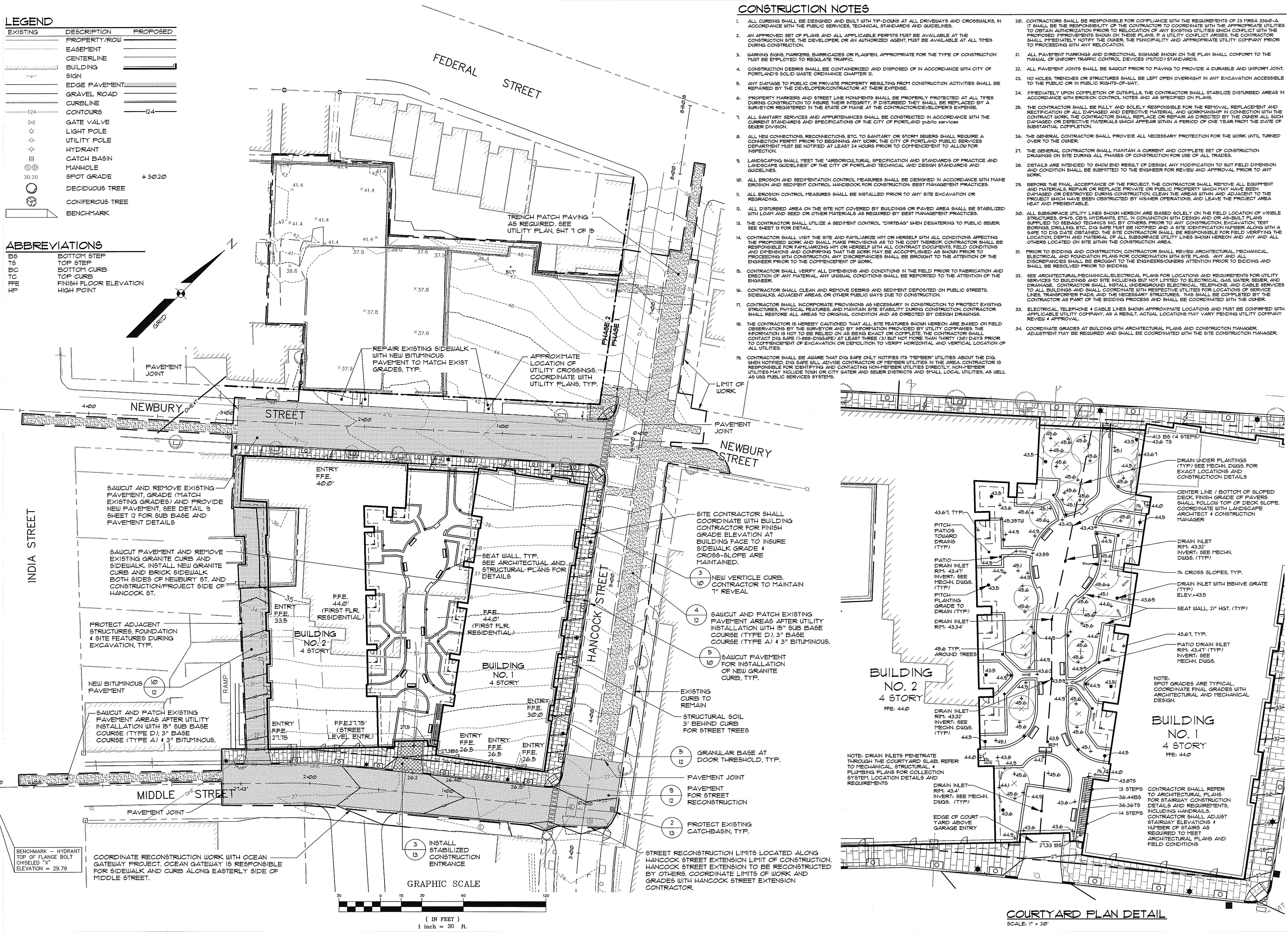


**LEGEND**

EXISTING	DESCRIPTION	PROPOSED
[Symbol]	PROPERTY ROW	[Symbol]
[Symbol]	EASEMENT	[Symbol]
[Symbol]	CENTERLINE	[Symbol]
[Symbol]	BUILDING	[Symbol]
[Symbol]	SIGN	[Symbol]
[Symbol]	EDGE PAVEMENT	[Symbol]
[Symbol]	GRAVEL ROAD	[Symbol]
[Symbol]	CURBLINE	[Symbol]
[Symbol]	CONTOURS	[Symbol]
[Symbol]	GATE VALVE	[Symbol]
[Symbol]	LIGHT POLE	[Symbol]
[Symbol]	UTILITY POLE	[Symbol]
[Symbol]	HYDRANT	[Symbol]
[Symbol]	CATCH BASIN	[Symbol]
[Symbol]	SPOT GRADE	[Symbol]
[Symbol]	DECIDUOUS TREE	[Symbol]
[Symbol]	CONIFEROUS TREE	[Symbol]
[Symbol]	BENCHMARK	[Symbol]

**ABBREVIATIONS**

BS	BOTTOM STEP
TS	TOP STEP
BC	BOTTOM CURB
TC	TOP CURB
FFE	FINISH FLOOR ELEVATION
HP	HIGH POINT



REV.	DATE	BY	DESCRIPTION
B	11/07/08	CD	REVISED AND SUBMITTED FOR CONSTRUCTION BID
A	11/09/08	CD	SUBMITTED FOR CONSTRUCTION BIDS
			STATUS:
			DATE:

**Sebago Technics**  
 Engineering Expertise You Can Build On  
 One Chesnut Street  
 Westbrook, ME 04098-1339  
 Tel (207) 956-0277

PROJECT NO: 05109  
 FIELD BOOK: CD  
 DESIGN: CD  
 CHKD: SAAB  
 DRAWN: SAAB

**GRADING PLAN**  
 OF:  
**THE BAY HOUSE**  
 112 NEWBURY ST., 115 NEWBURY ST., 40 HANCOCK ST.  
 PORTLAND, MAINE

**THE VILLAGE AT OCEAN GATE, LLC**  
 133 PEARL STREET, SUITE 400  
 BOSTON, MA 02110

DATE: 8/3/05  
 SCALE: AS NOTED

SHEET 5 OF 14