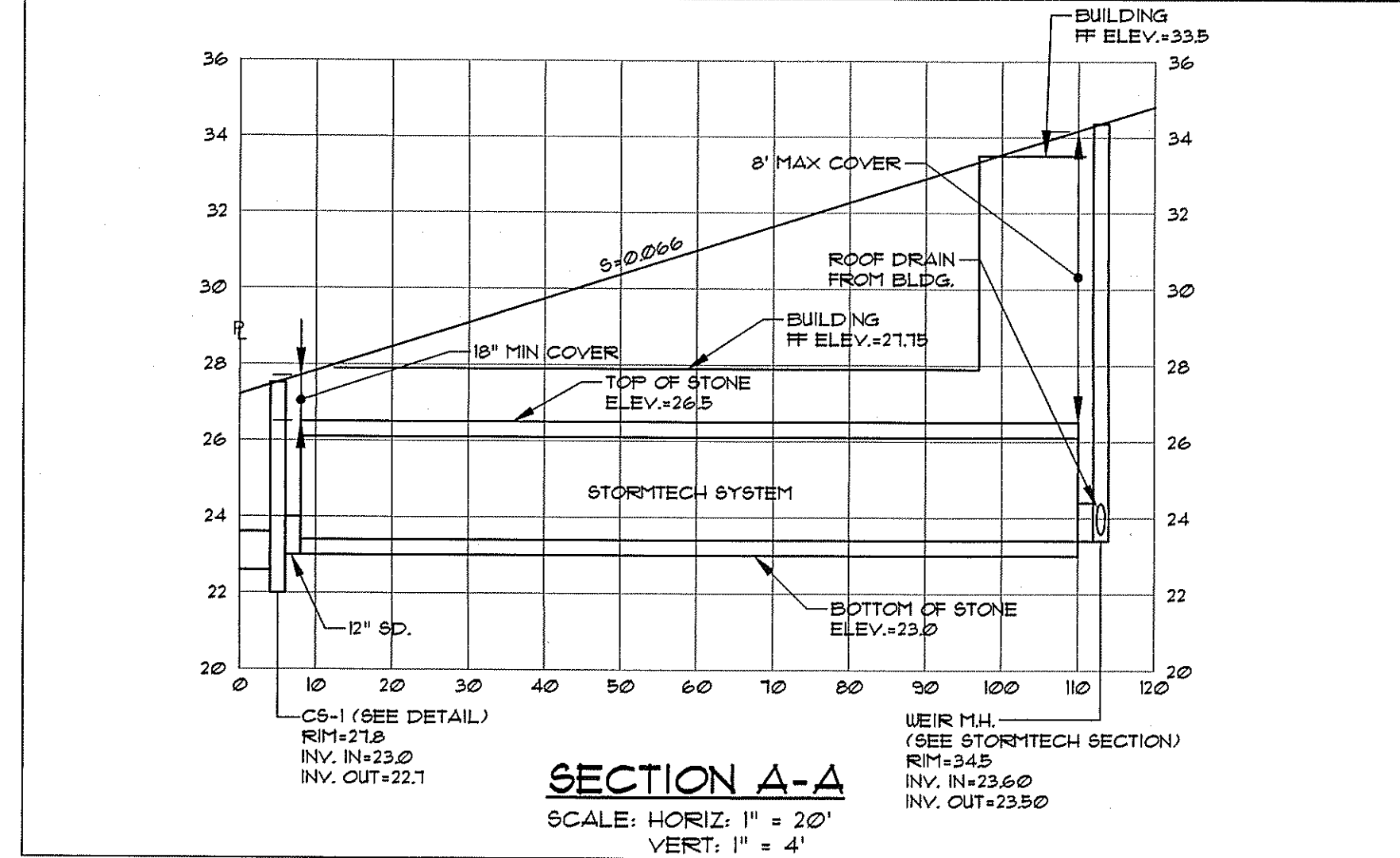
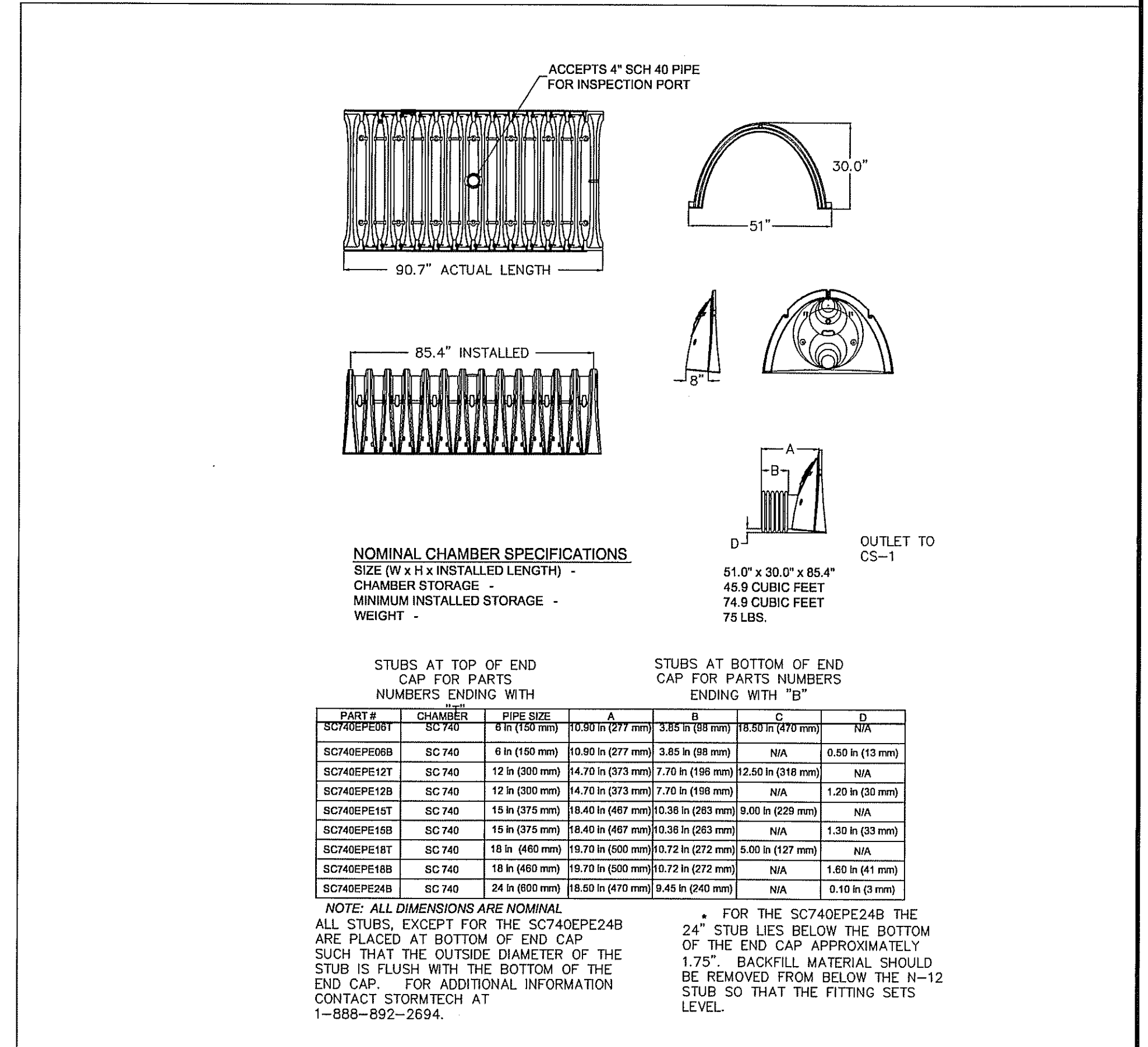


FOR STORMTECH INFORMATION
CALL 1-888-892-2694

STORMTECH UNDERDRAIN DETAIL



SECTION A-A
SCALE: HORIZ: 1" = 20'
VERT: 1" = 4'

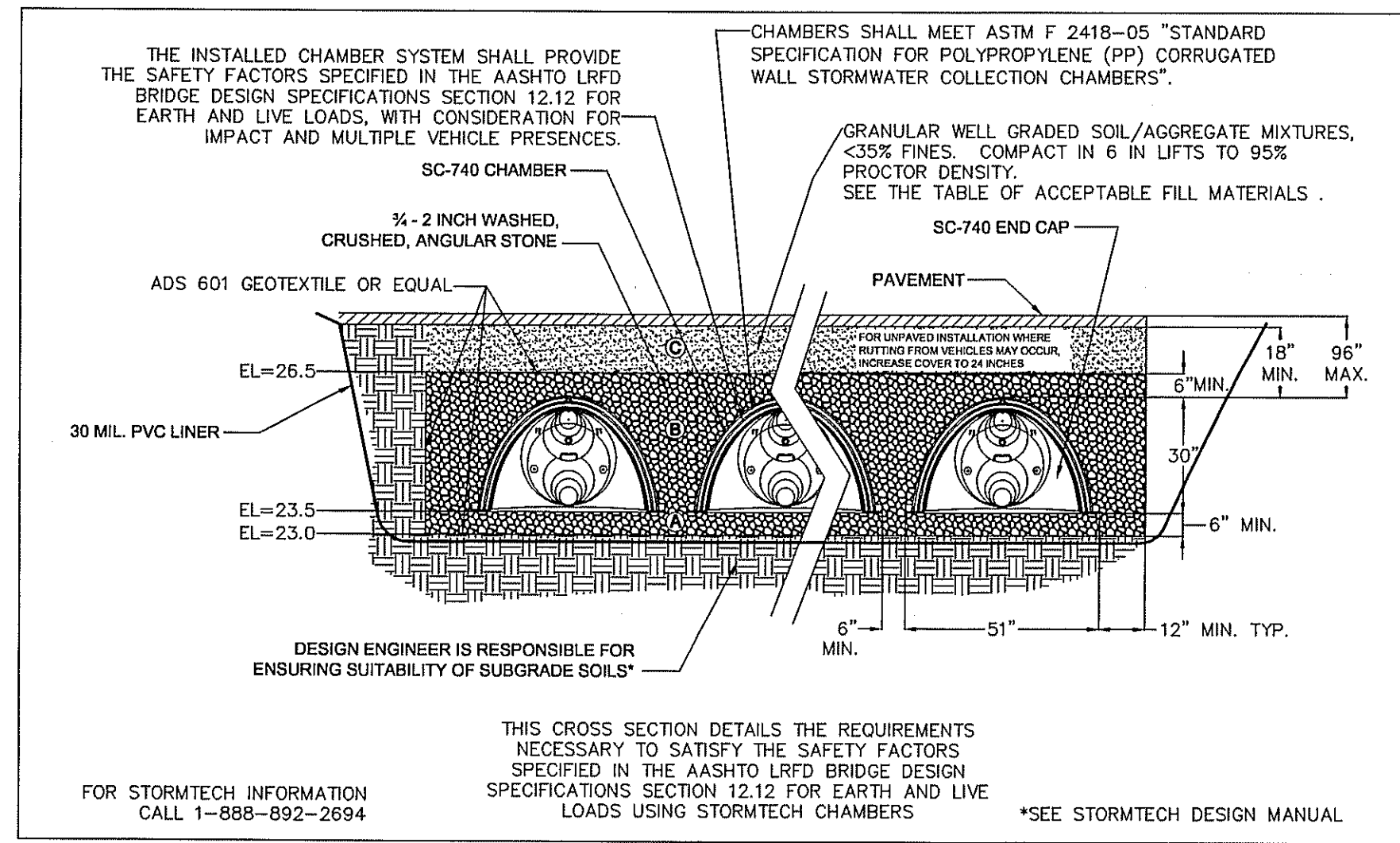


**ACCEPTABLE FILL MATERIALS
STORMTECH SC-740 CHAMBER SYSTEMS**

MATERIAL LOCATION	DESCRIPTION	AASHTO M43 DESIGNATION	AASHTO M145 DESIGNATION	COMPACTION/DENSITY REQUIREMENT
FILL MATERIAL FROM 18" TO GRADE ABOVE CHAMBERS	ANY SOIL/ROCK MATERIALS, NATIVE SOILS OR PER ENGINEER'S PLANS. CHECK PLANS FOR PAVEMENT SUBGRADE REQUIREMENTS.	N/A	N/A	PREPARE PER ENGINEER'S PLANS. PAVED INSTALLATIONS MAY HAVE STRINGENT MATERIAL AND PREPARATION REQUIREMENTS.
FILL MATERIAL FOR 6" TO 18" ELEVATION ABOVE CHAMBERS (24" FOR UNPAVED INSTALLATIONS)	GRANULAR WELL-GRADED SOIL/AGGREGATE MIXTURES, <35% FINES.	3, 357, 4, 467, 5, 56, 57, 6, 67, 68, 7, 78, 8, 89, 9, 10	A-1 A-2 A-3	COMPACT IN 6" LIFTS TO A MINIMUM 95% STANDARD PROCTOR DENSITY. ROLLER GROSS VEHICLE WEIGHT NOT TO EXCEED 12,000 LBS. DYNAMIC FORCE NOT TO EXCEED 20,000 LBS.
EMBEDMENT STONE SURROUNDING AND TO A 6" ELEVATION ABOVE CHAMBERS	WASHED ANGULAR STONE WITH THE MAJORITY OF PARTICLES BETWEEN 1/2-2 INCH	3, 357, 4, 467, 5, 56, 57	N/A	NO COMPACTION REQUIRED
FOUNDATION STONE BELOW CHAMBERS	WASHED ANGULAR STONE WITH THE MAJORITY OF PARTICLES BETWEEN 1/2-2 INCH	3, 357, 4, 467, 5, 56, 57	N/A	PLATE COMPACT OR ROLL TO ACHIEVE A 95% STANDARD PROCTOR DENSITY

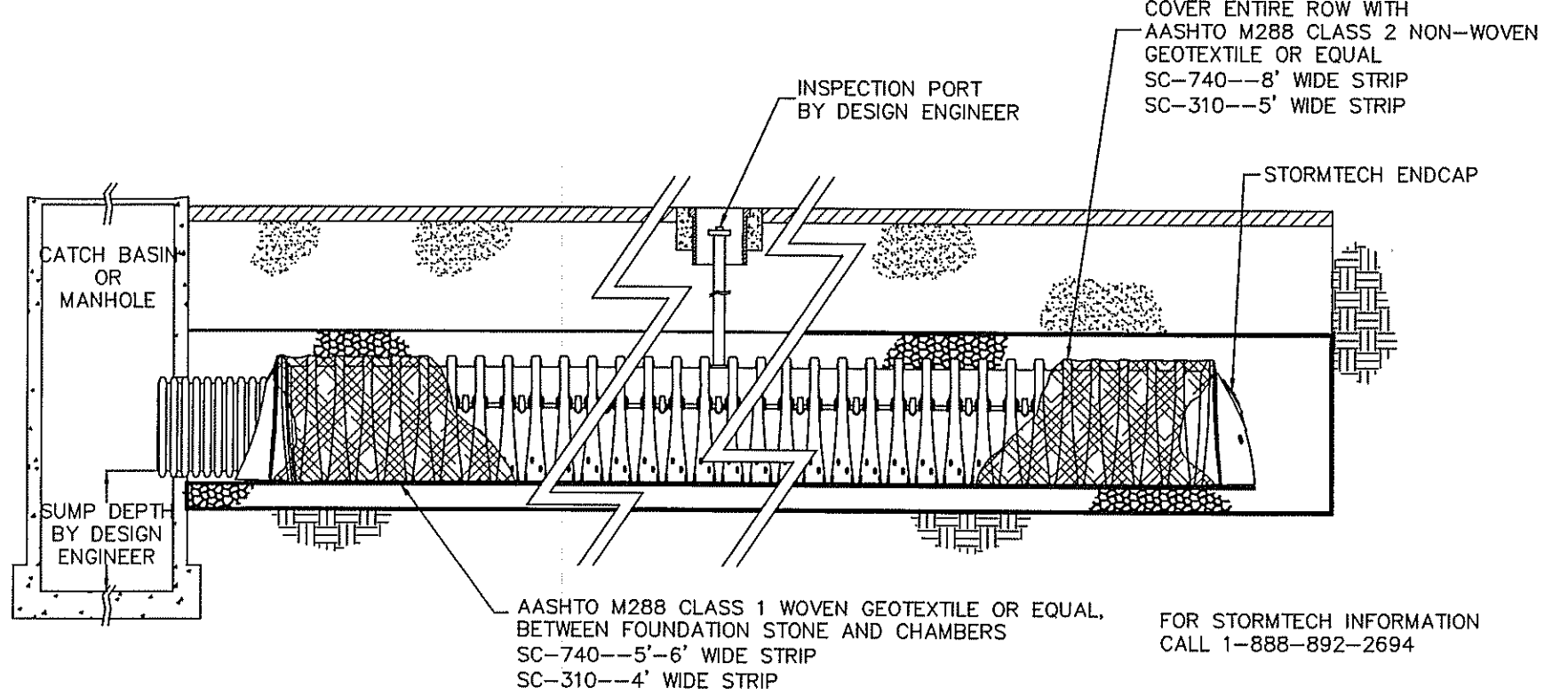
PLEASE NOTE: THE LISTED AASHTO DESIGNATIONS ARE FOR GRADATIONS ONLY. THE STONE MUST ALSO BE WASHED CRUSHED ANGULAR. FOR EXAMPLE, THE STONE MUST BE SPECIFIED AS WASHED, CRUSHED, ANGULAR NO. 4 STONE.

STORMTECH ACCEPTABLE FILL MATERIALS



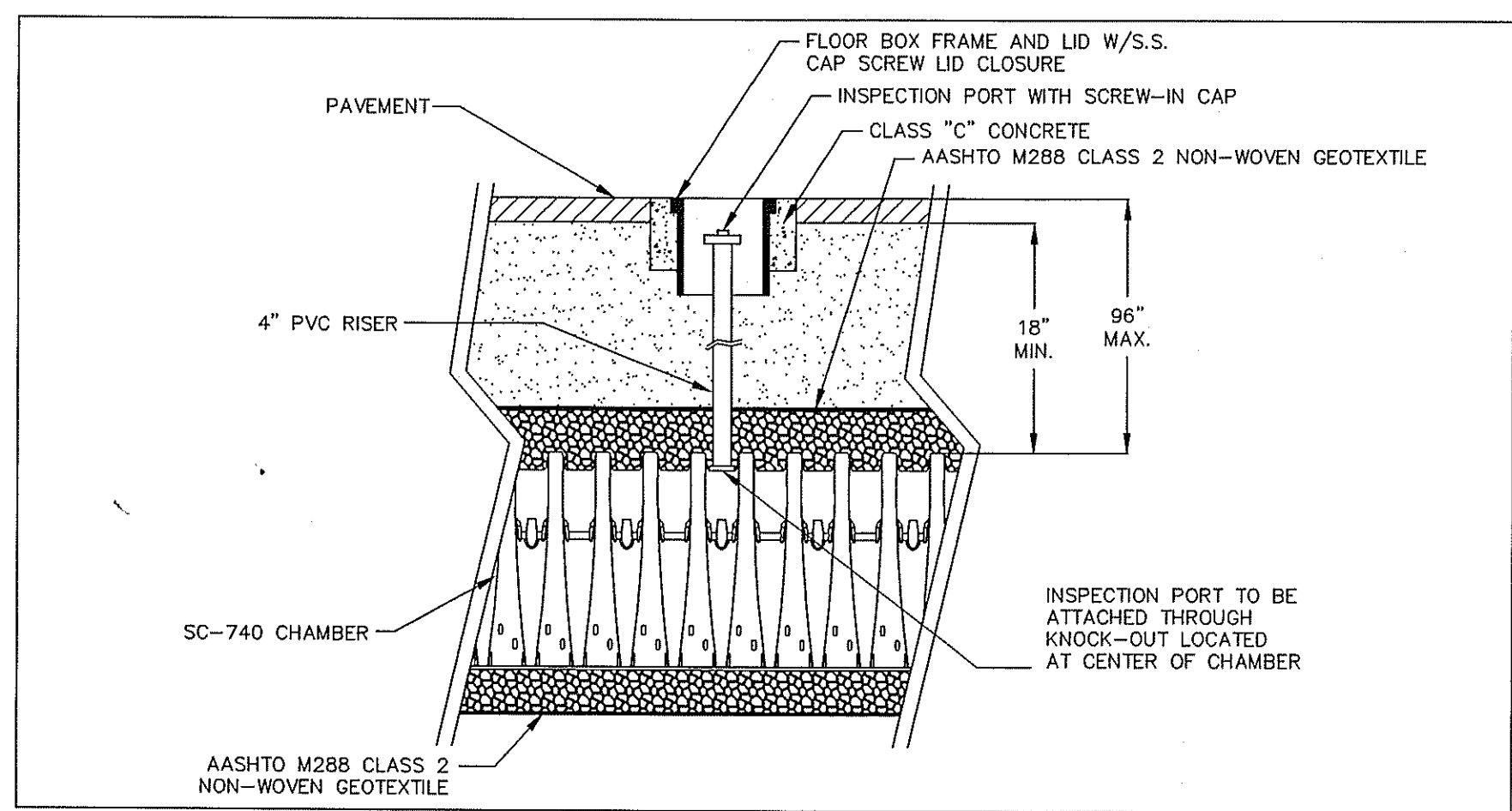
FOR STORMTECH INFORMATION
CALL 1-888-892-2694

SC-740 TYPICAL CROSS SECTION

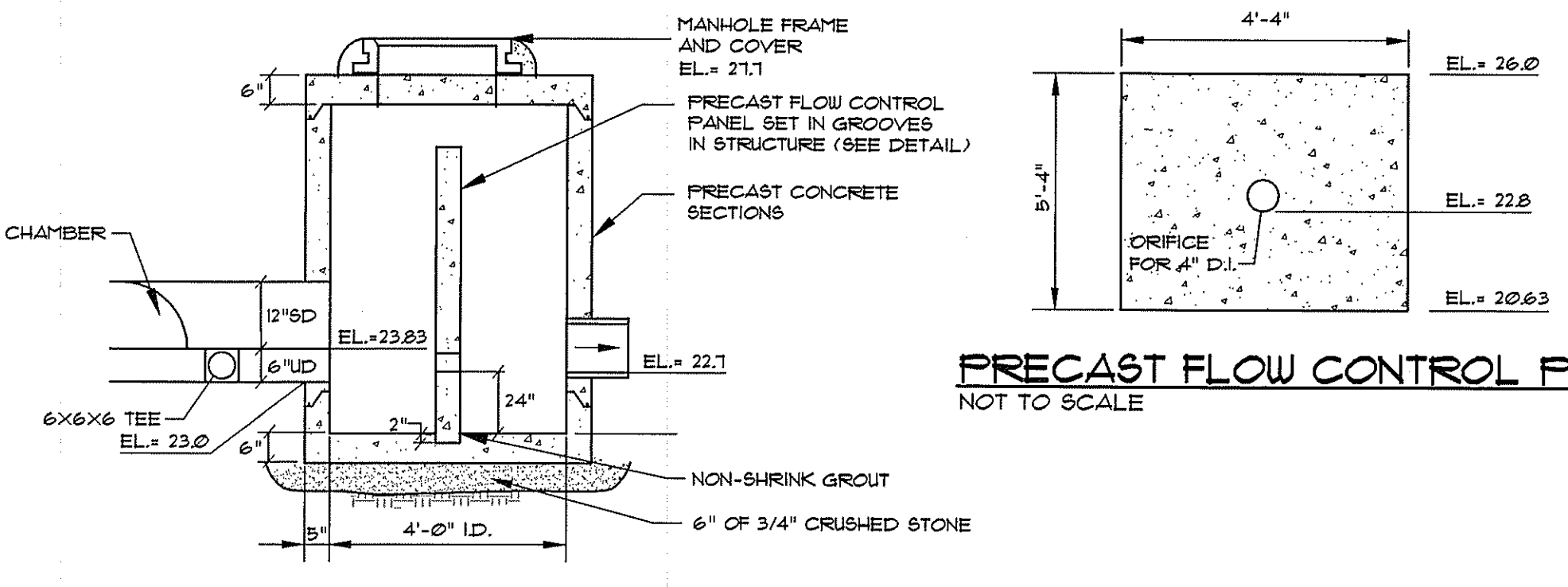


FOR STORMTECH INFORMATION
CALL 1-888-892-2694

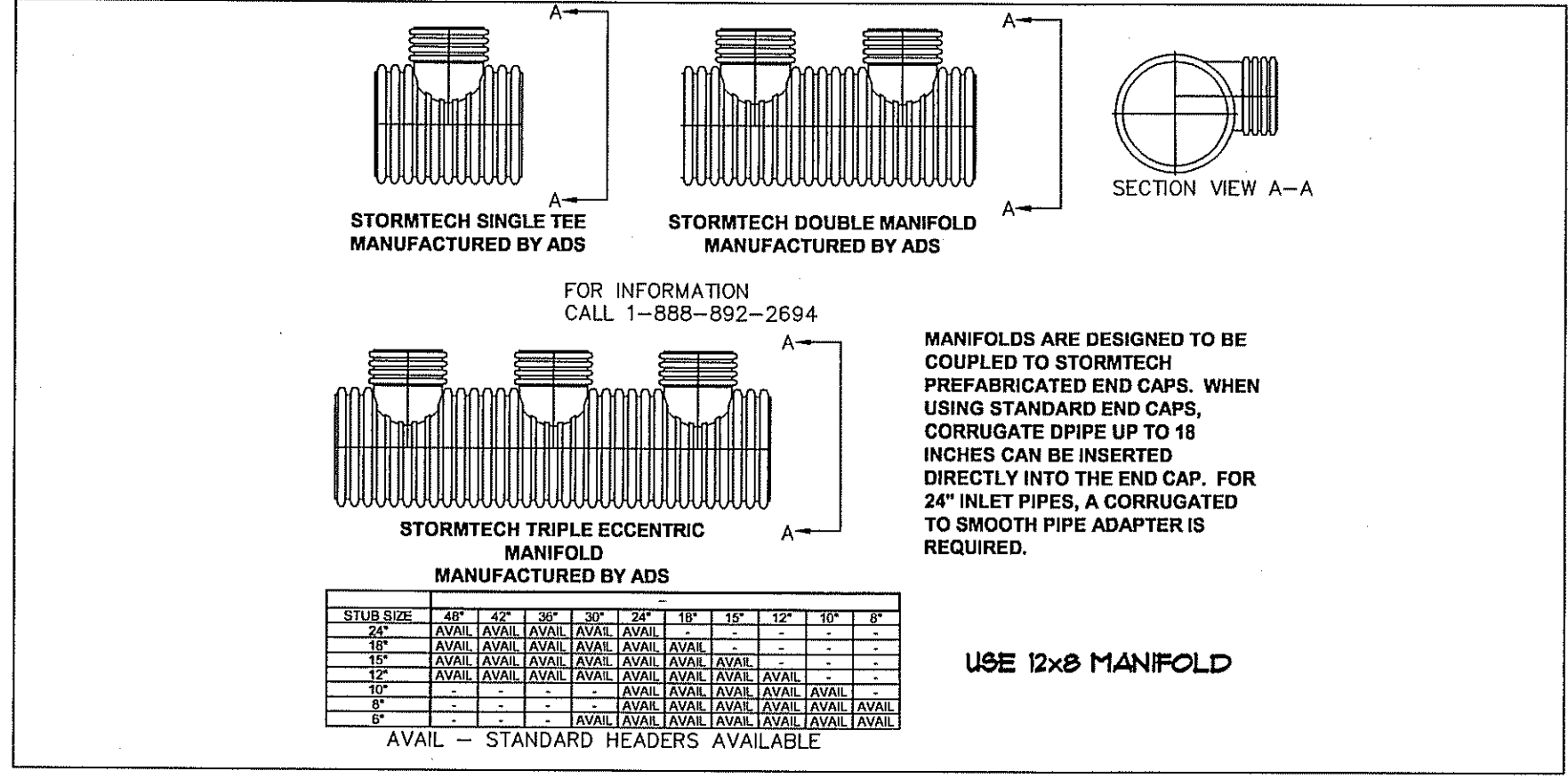
STORMTECH ISOLATOR™ ROW DETAIL



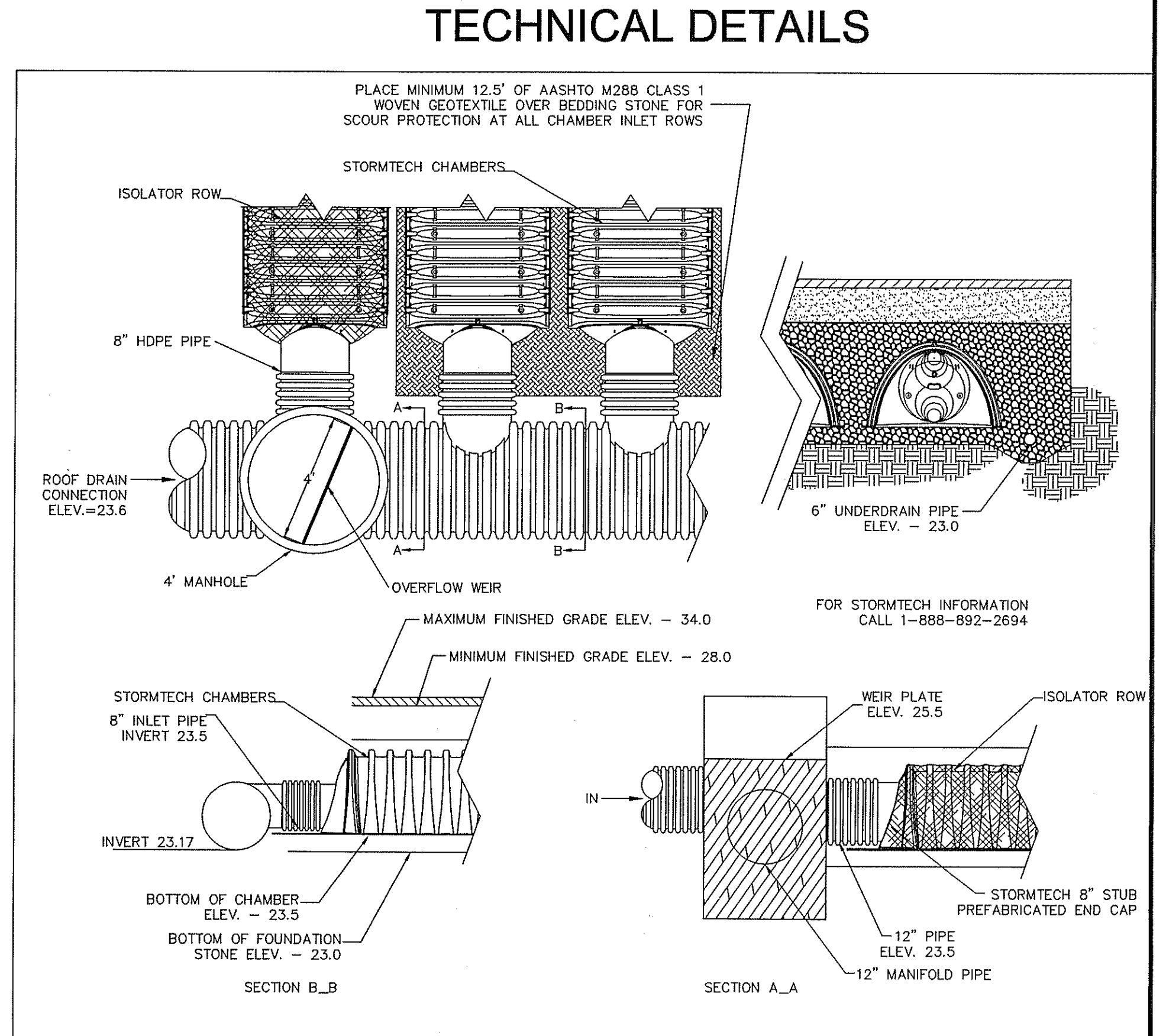
STORMTECH INSPECTION PORT DETAIL



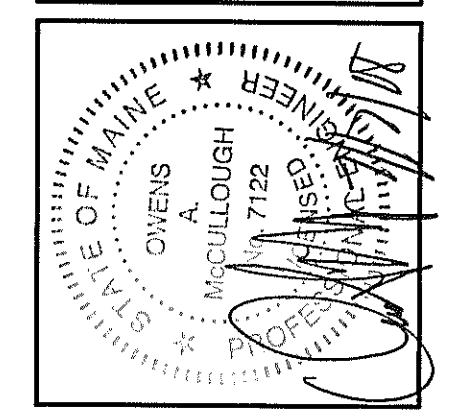
OUTLET STRUCTURE DETAIL CS-1
NOT TO SCALE



ADS MANIFOLD DETAILS



STORMTECH ELEVATIONS



REV.	BY	DATE	STATUS
B	CD	7/17/08	REVISED AND SUBMITTED FOR CONSTRUCTION BID
A	CD	11/09/07	SUBMITTED FOR CONSTRUCTION BIDS

Sebago Technics
Engineering Expertise You Can Build On
One Chebot Street
Westbrook, ME 04098-1339
Tel (207) 856-0277

PROJECT NO. FIELD BOOK DESIGN CHKD DRAWN
05109 - - - - - CD - - - - - SAB

STORMTECH DETAILS
OF:
THE BAY HOUSE
112 NEWBURY ST., 113 NEWBURY ST., 40 HANCOCK ST.
PORTLAND, MAINE
FOR:
THE VILLAGE AT OCEAN GATE, LLC
133 PEARL STREET, SUITE 400
BOSTON, MA 02110

DATE	SCALE
8/3/05	AS SHOWN