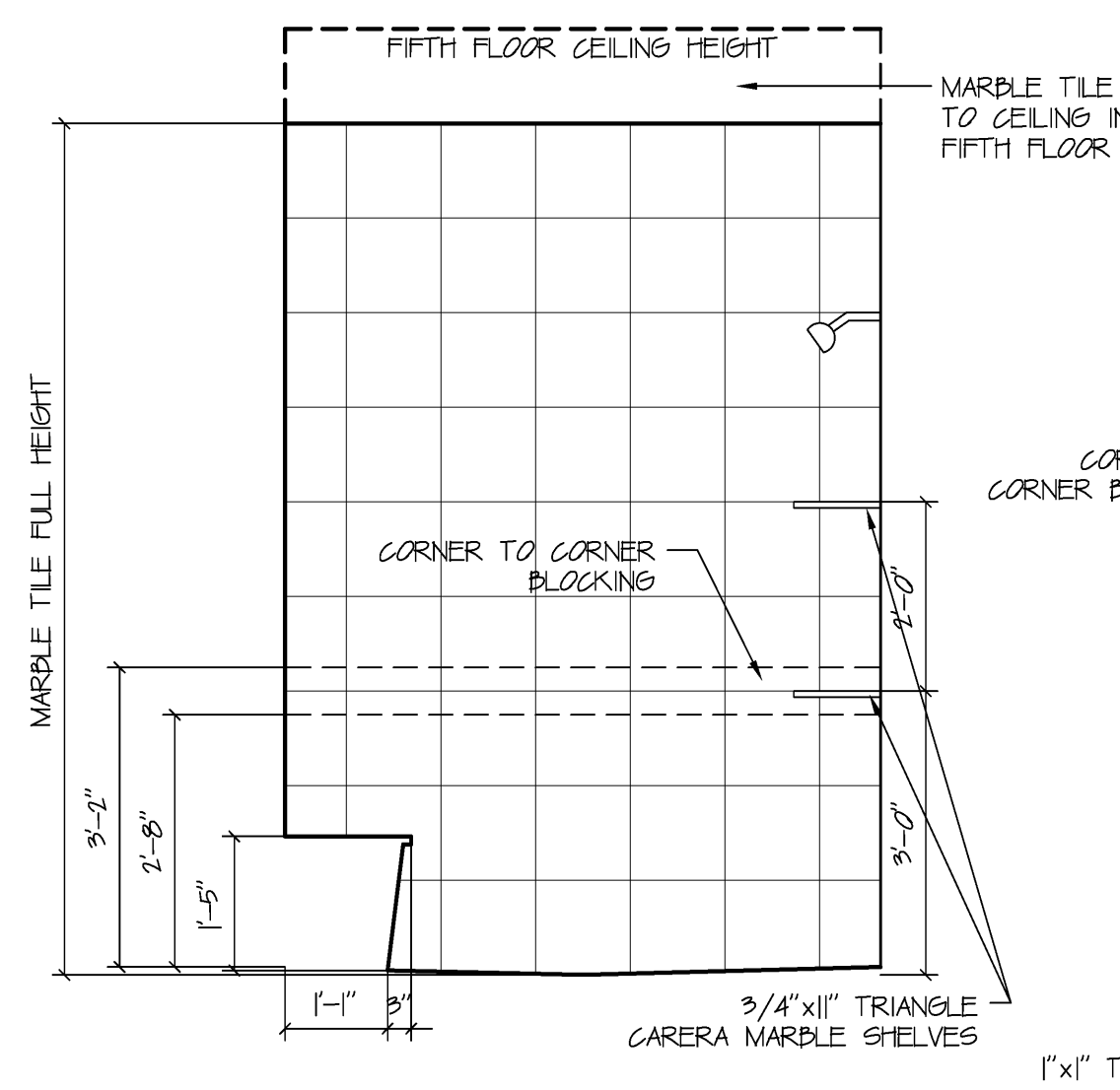


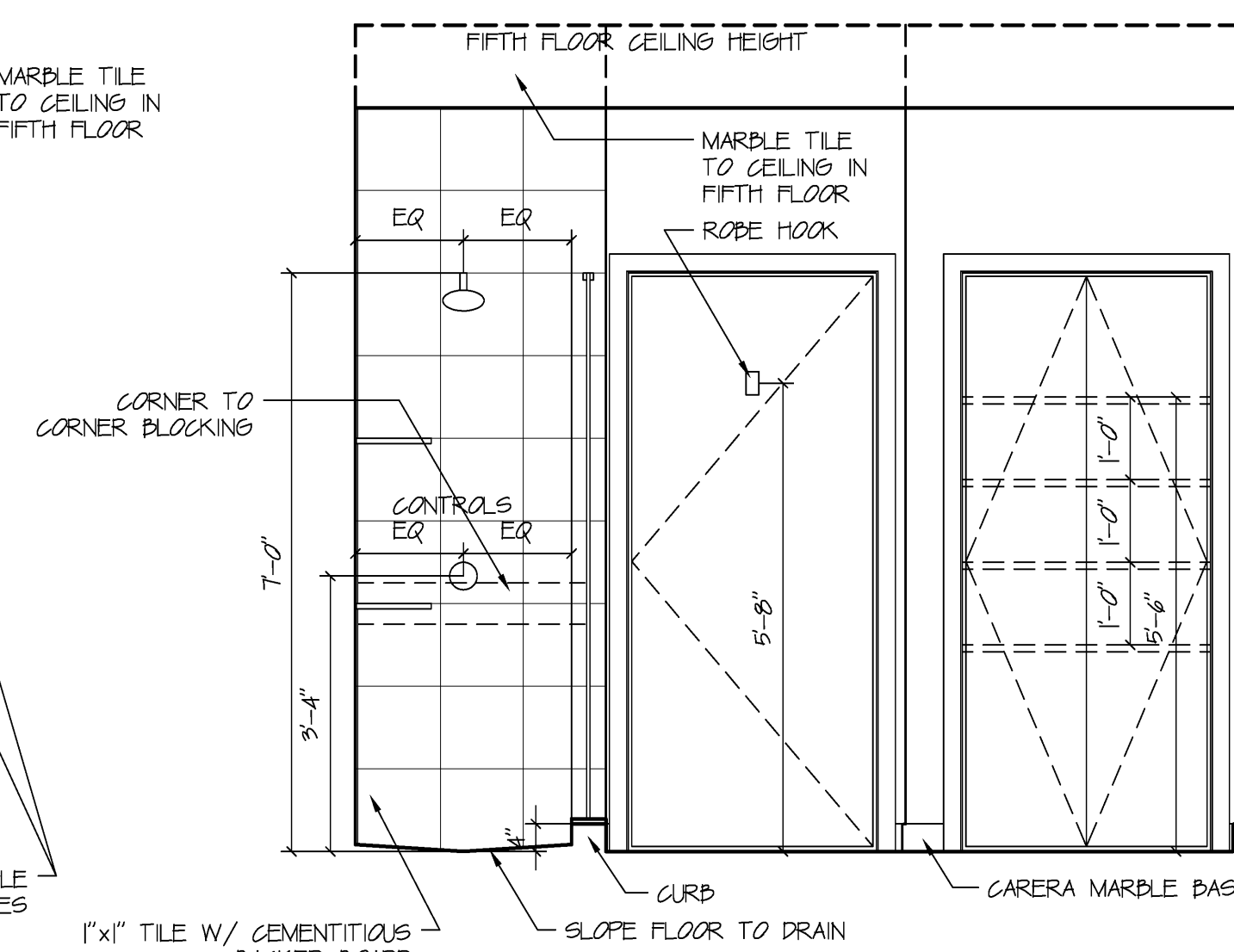
ELEVATION A

Scale: 1/2" = 1' 0



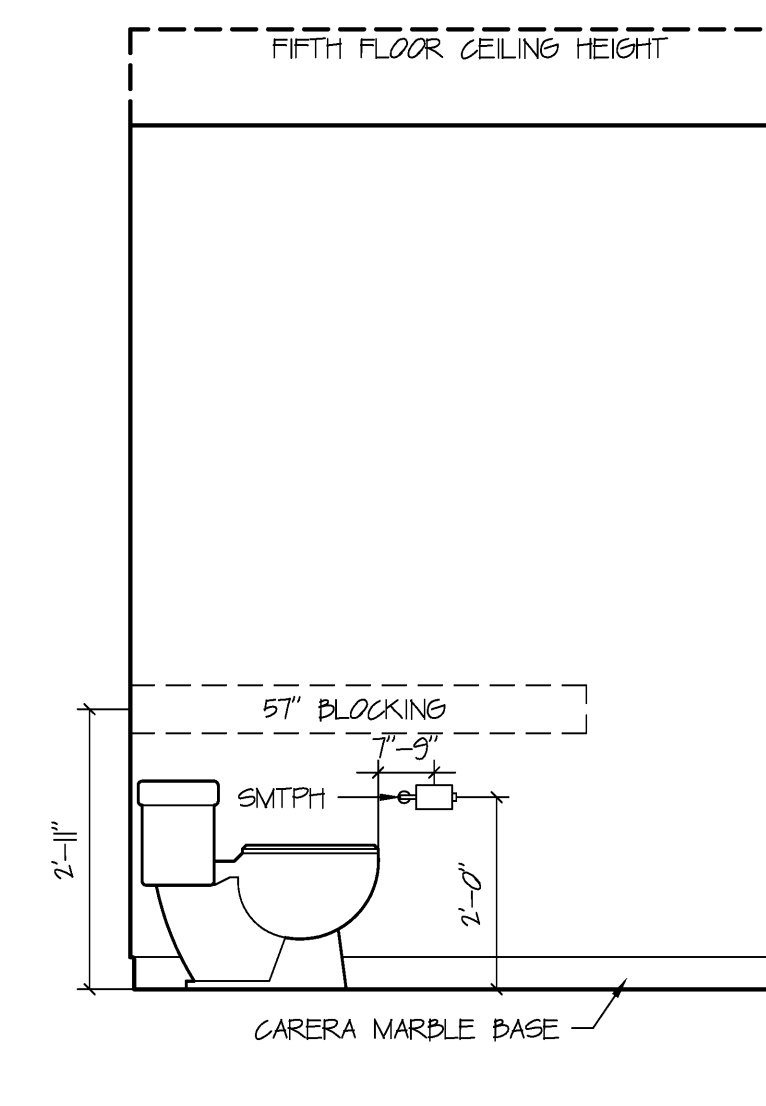
ELEVATION B

Scale: 1/2" = 1' 0



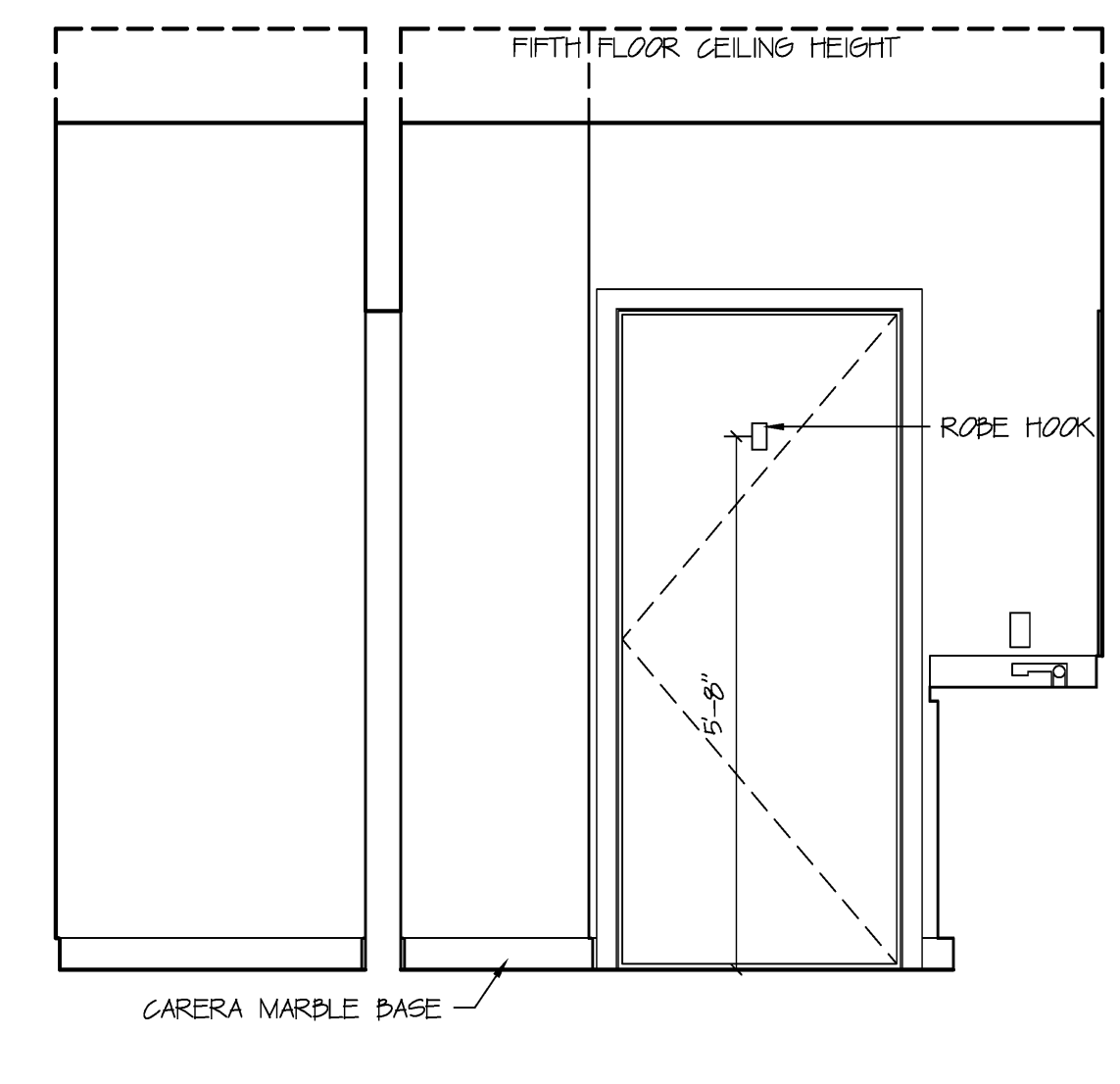
ELEVATION C

Scale: 1/2" = 1' 0



ELEVATION D

Scale: 1/2" = 1' 0

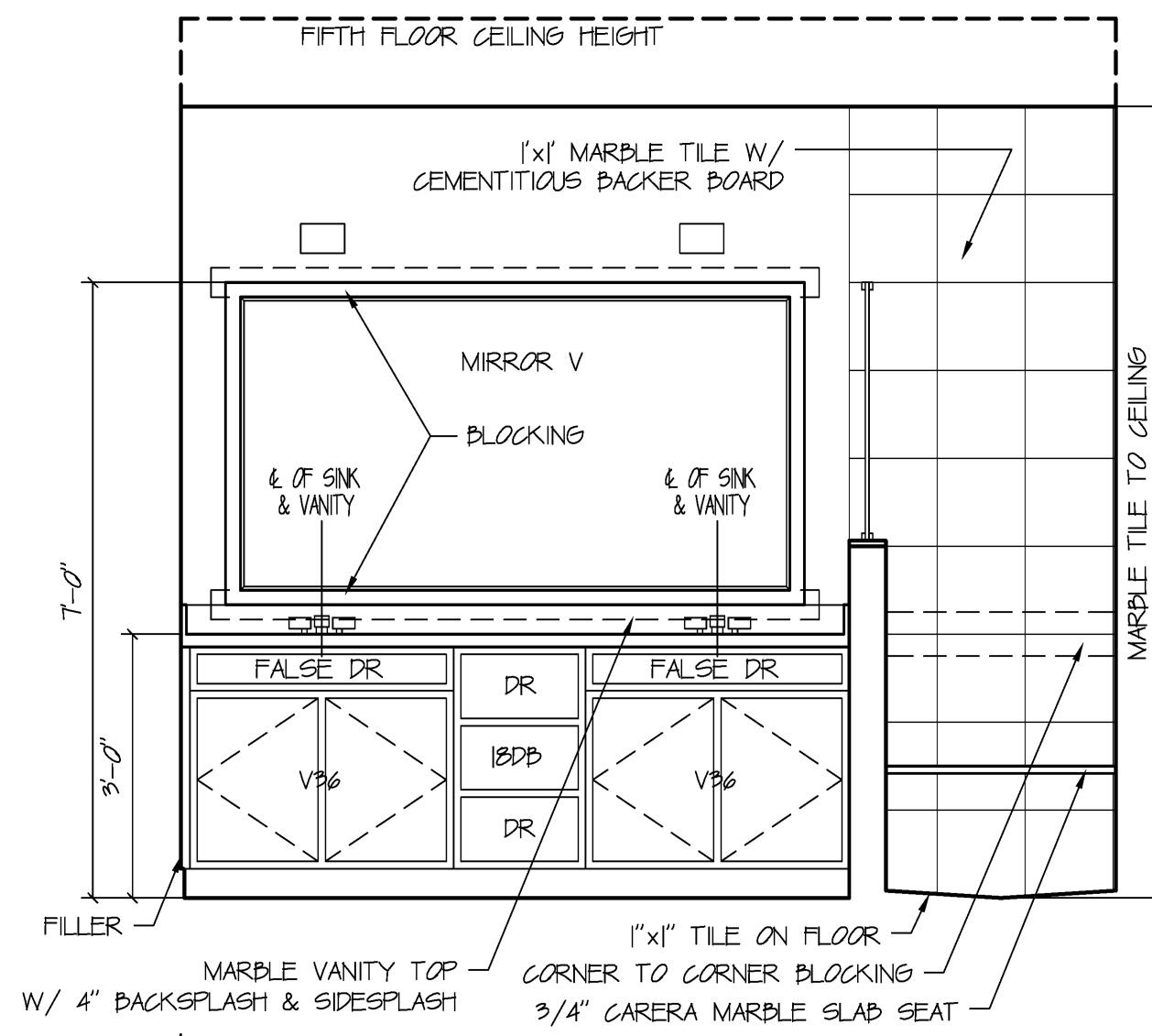


ELEVATION E

Scale: 1/2" = 1' 0

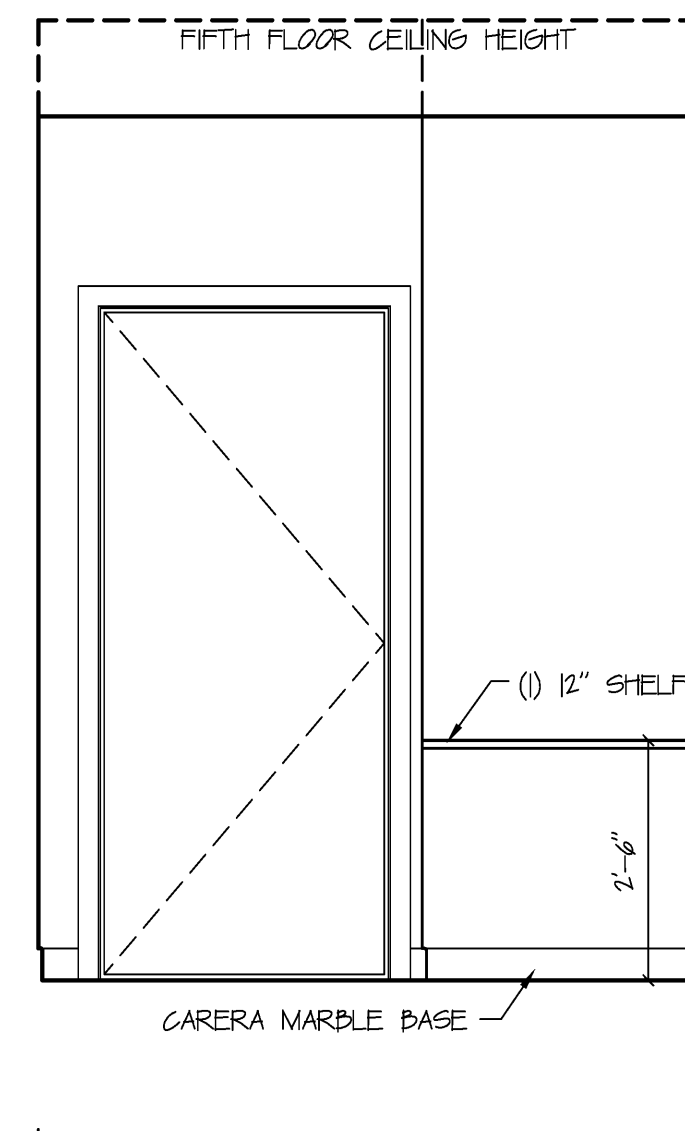
UNIT Q & R MASTER BATH

REFER TO PLANS FOR ACTUAL ORIENTATION OF UNIT



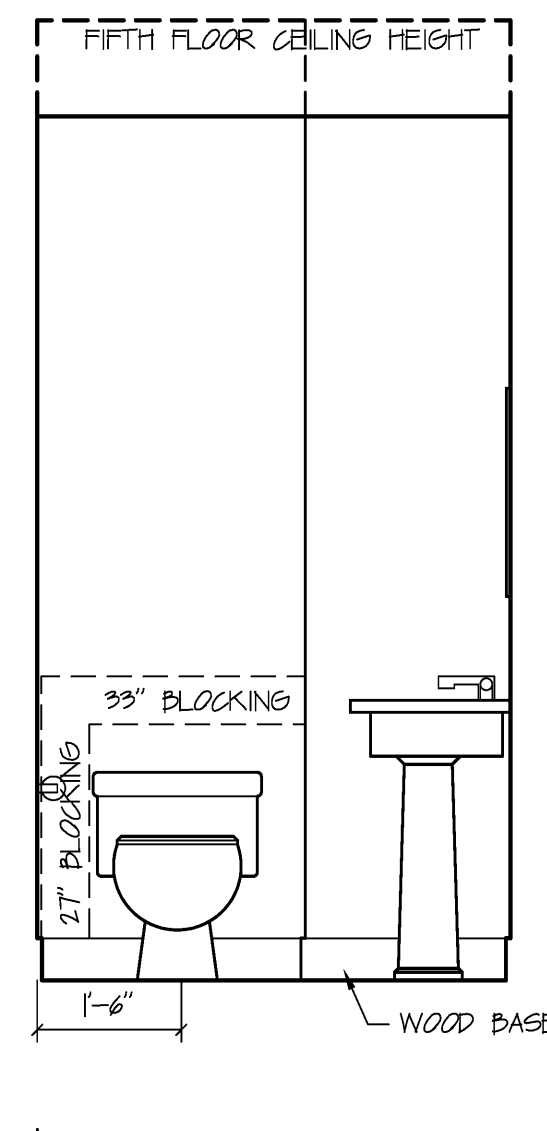
ELEVATION F

Scale: 1/2" = 1' 0



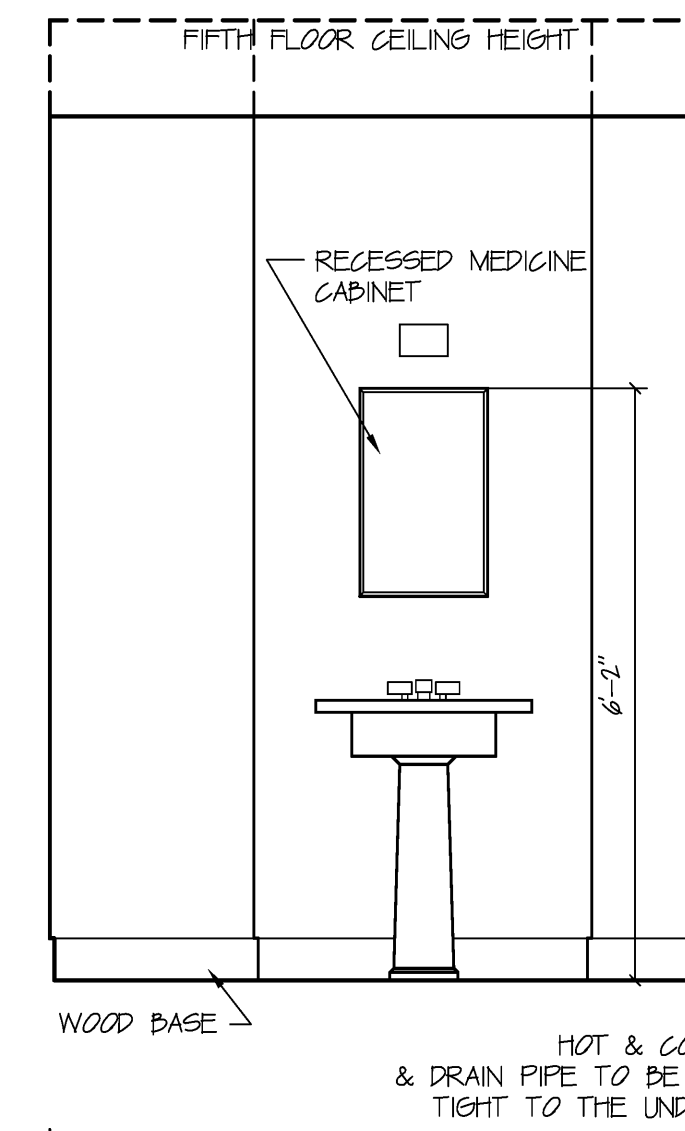
ELEVATION G

Scale: 1/2" = 1' 0



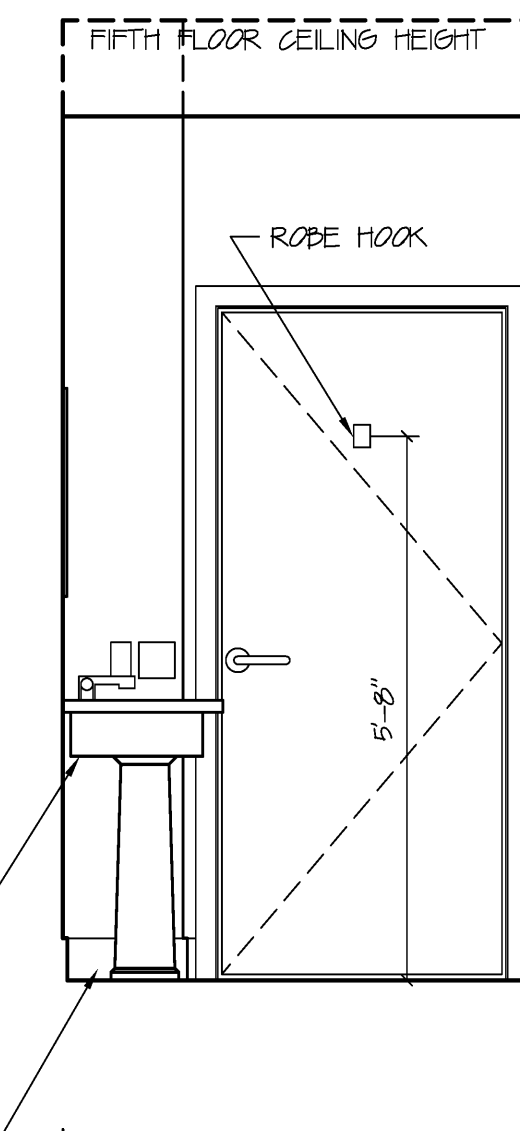
ELEVATION A

Scale: 1/2" = 1' 0



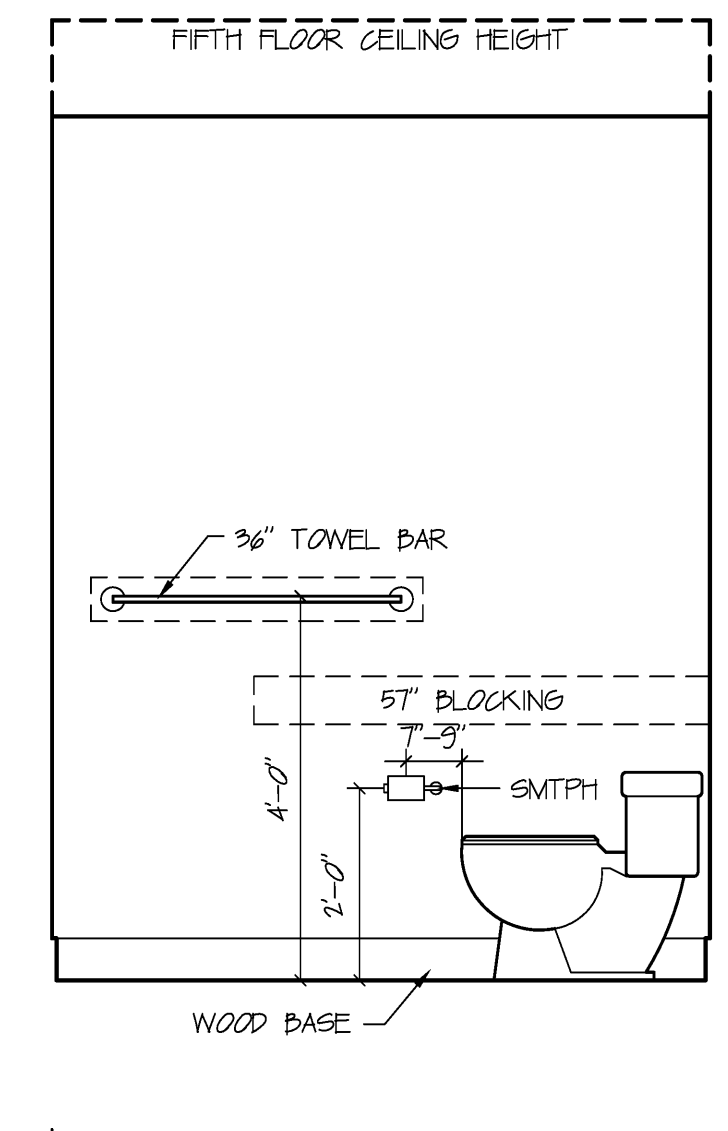
ELEVATION B

Scale: 1/2" = 1' 0



ELEVATION C

Scale: 1/2" = 1' 0

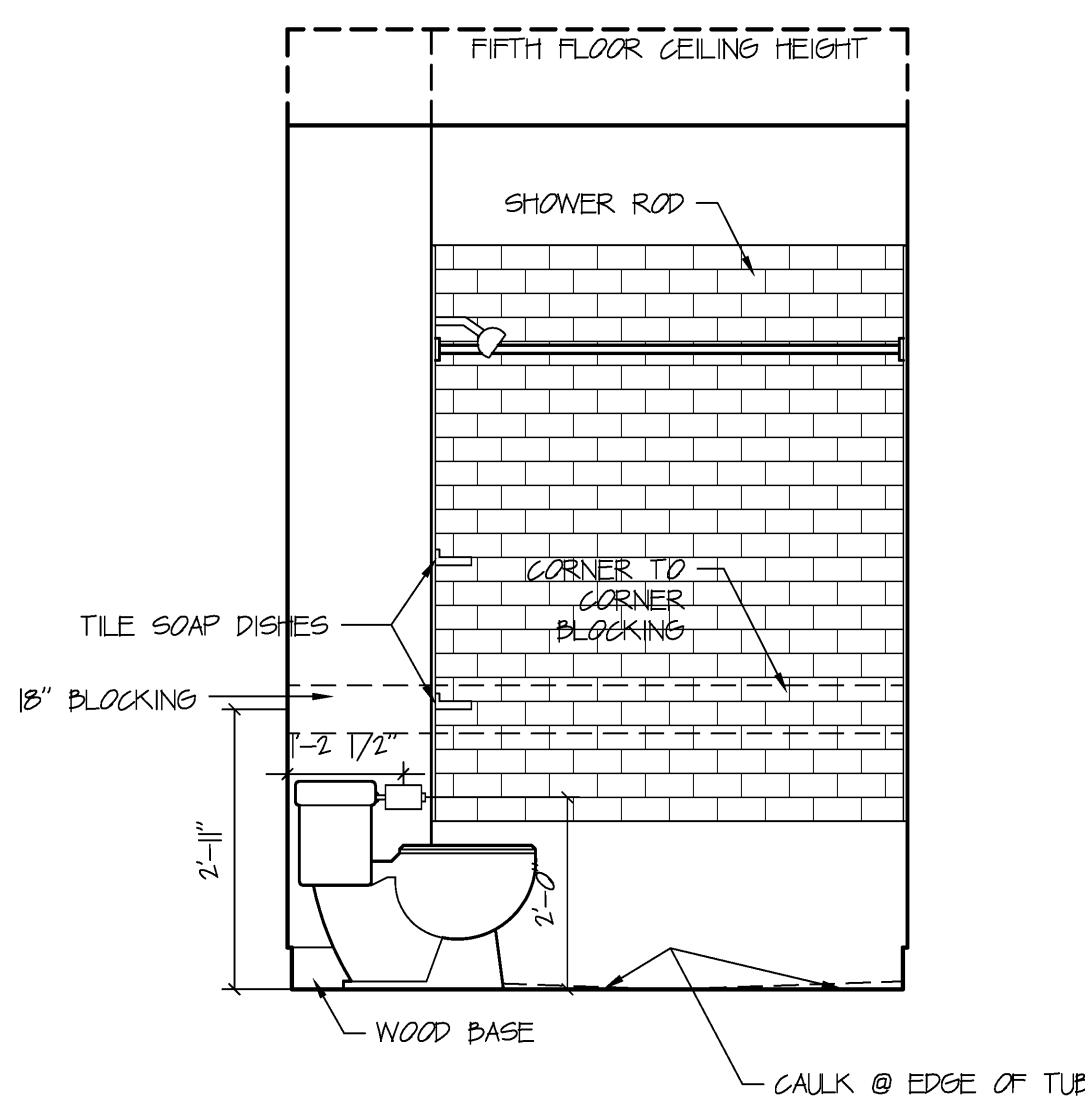


ELEVATION D

Scale: 1/2" = 1' 0

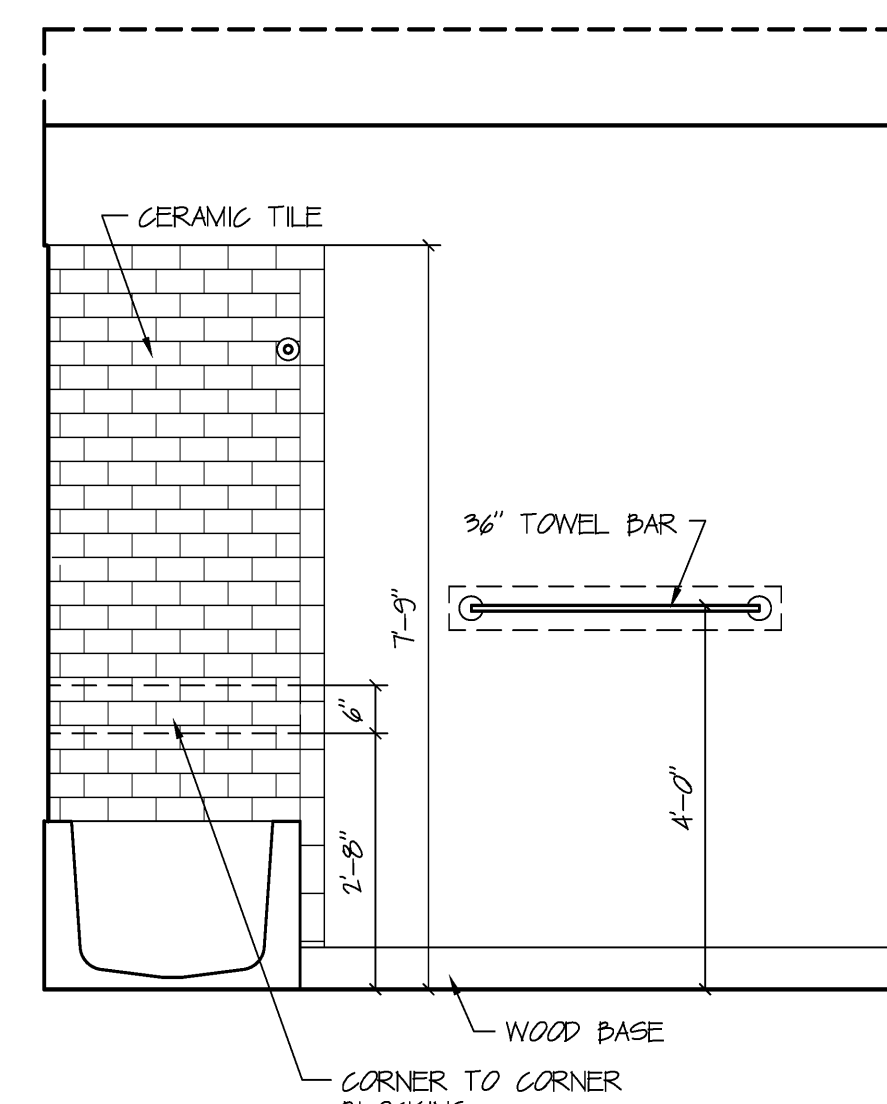
UNIT Q POWDER ROOM

REFER TO PLANS FOR ACTUAL ORIENTATION OF UNIT



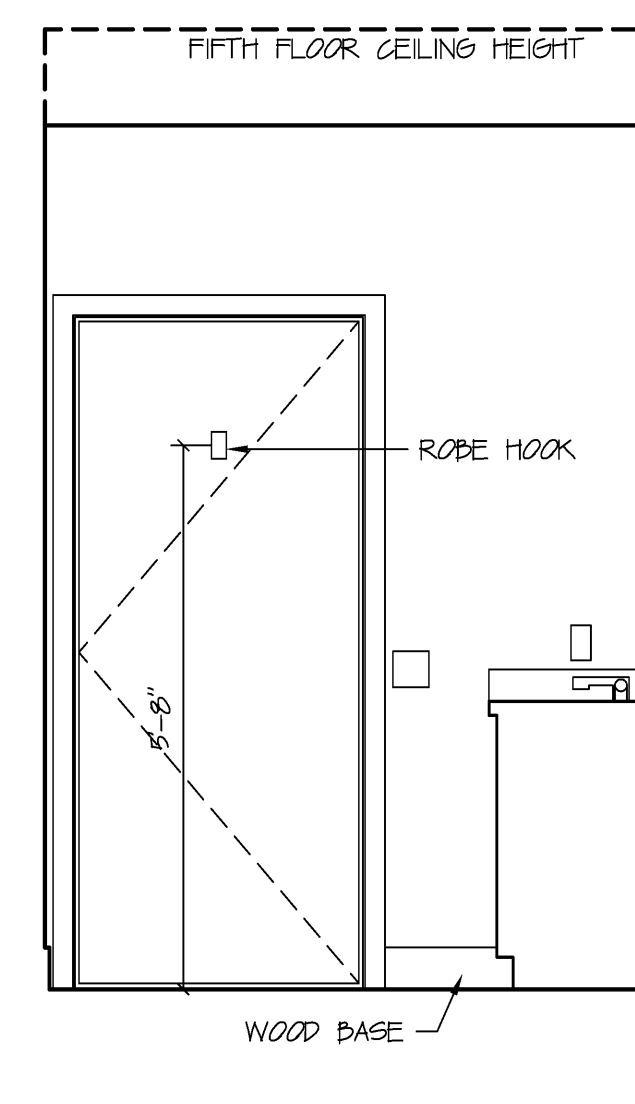
ELEVATION A

Scale: 1/2" = 1' 0



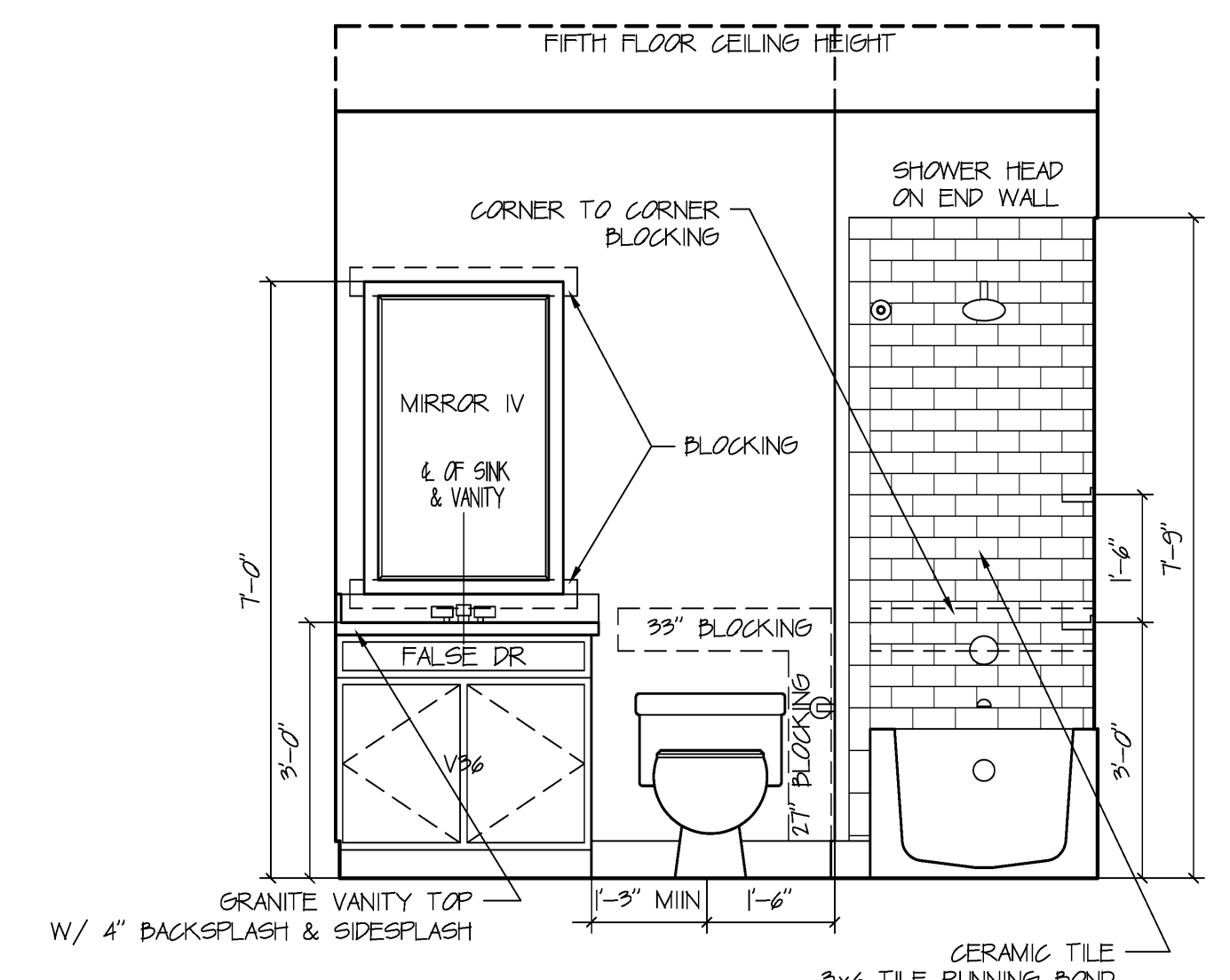
ELEVATION B

Scale: 1/2" = 1' 0



ELEVATION C

Scale: 1/2" = 1' 0



ELEVATION D

Scale: 1/2" = 1' 0

UNIT Q BATH

REFER TO PLANS FOR ACTUAL ORIENTATION OF UNIT

DAVID M. WHITE, ARCHITECT

403 Tibbetts Hill Road
P. O. Box 447
Goffstown, NH 03045
(603) 437-3425

THE VILLAGE AT OCEAN GATE, LLC

c/o Atlas Investment Group, LLC
35 Fay Street, Suite 107B
Boston, MA 02118

THE BAY HOUSE

Middle Street
Portland, Maine

UNIT INTERIOR ELEVATIONS

Scale: 1/2" = 1' 0
Commission No.: 06-008
Date: July 15, 2008

REVISIONS:

DRG. NO.

IES