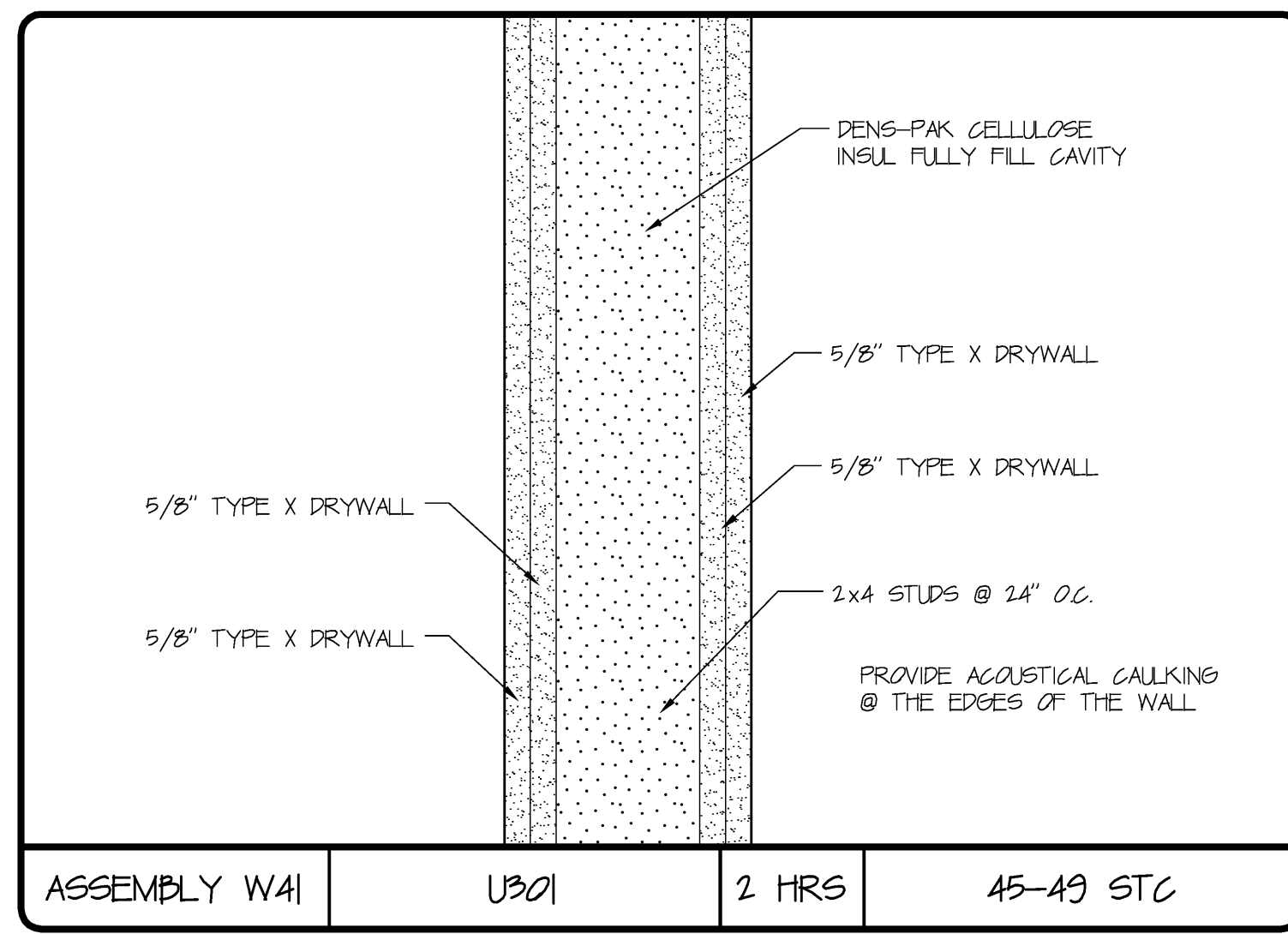
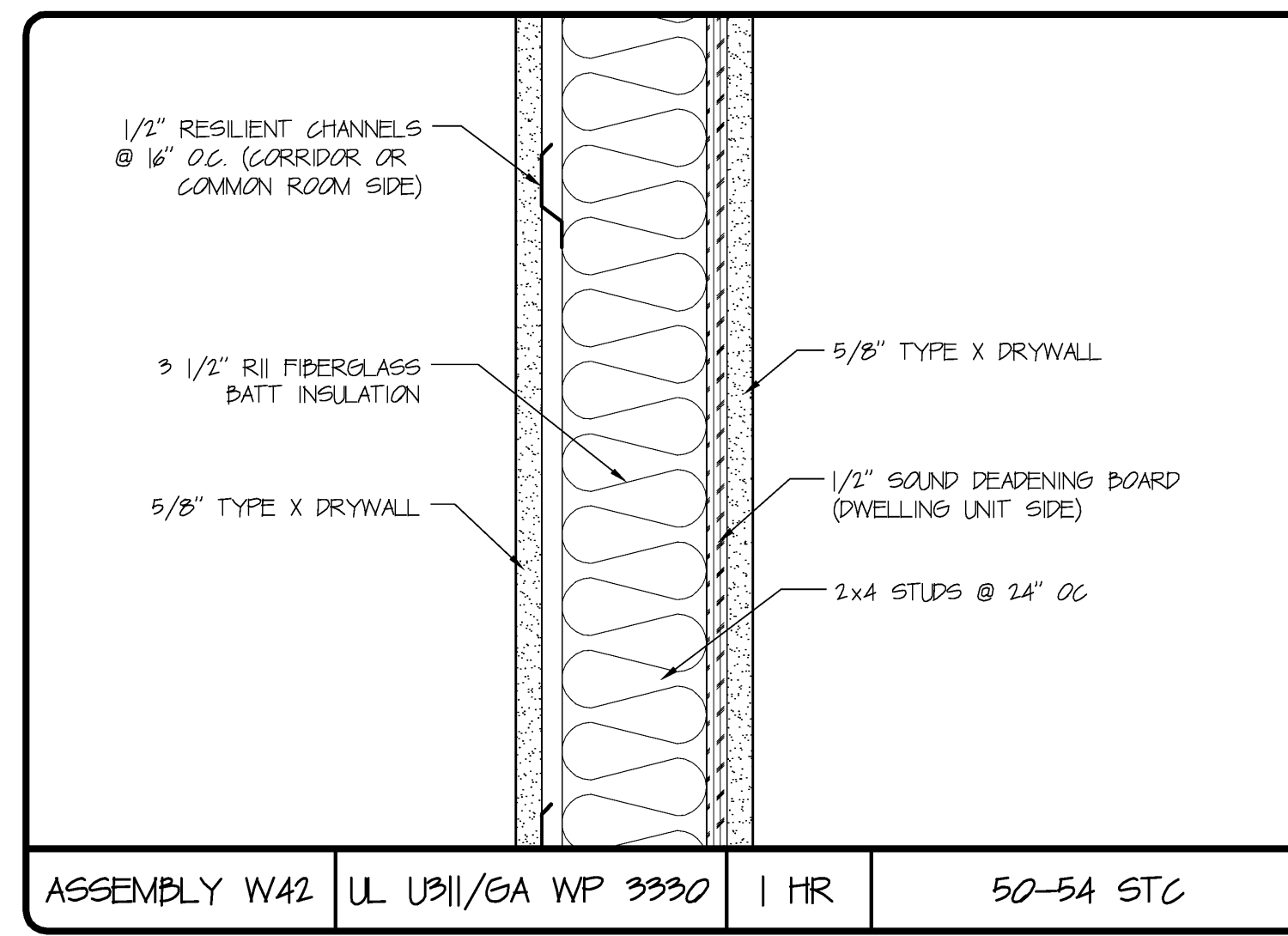


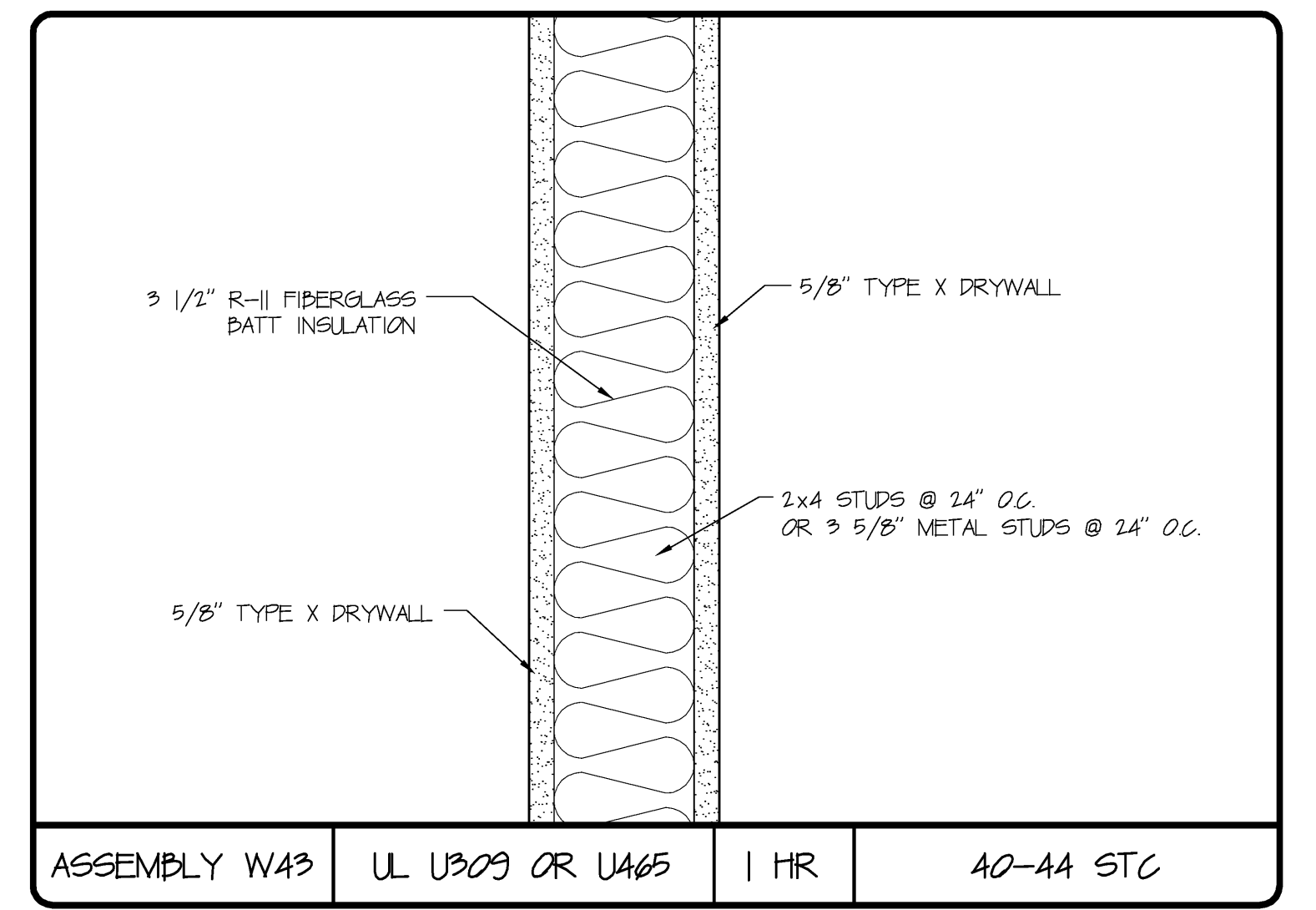
ASSEMBLY W40 UL U301/U525 2 HRS 55-59 STC



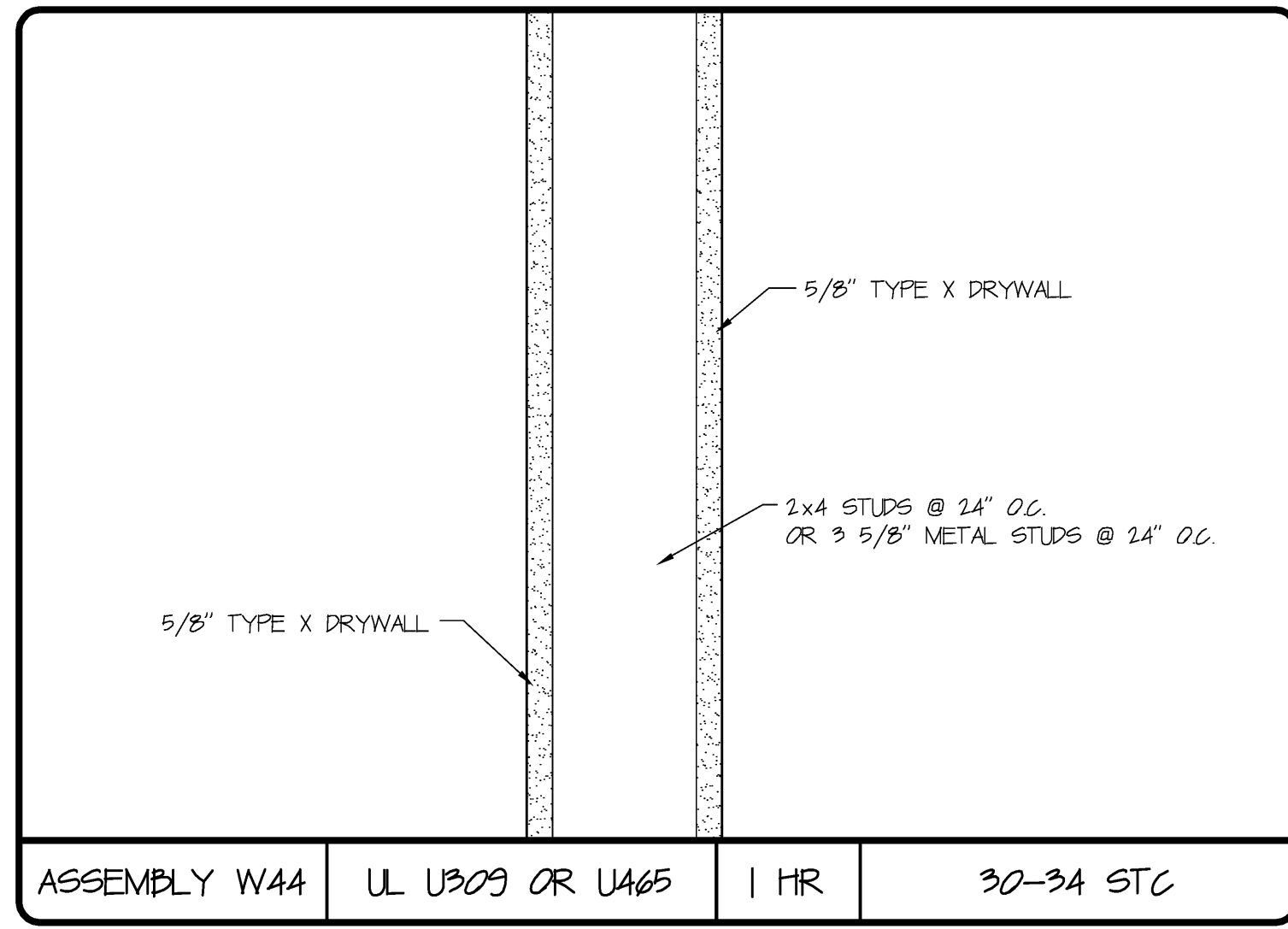
ASSEMBLY W41 U301 2 HRS 45-49 STC



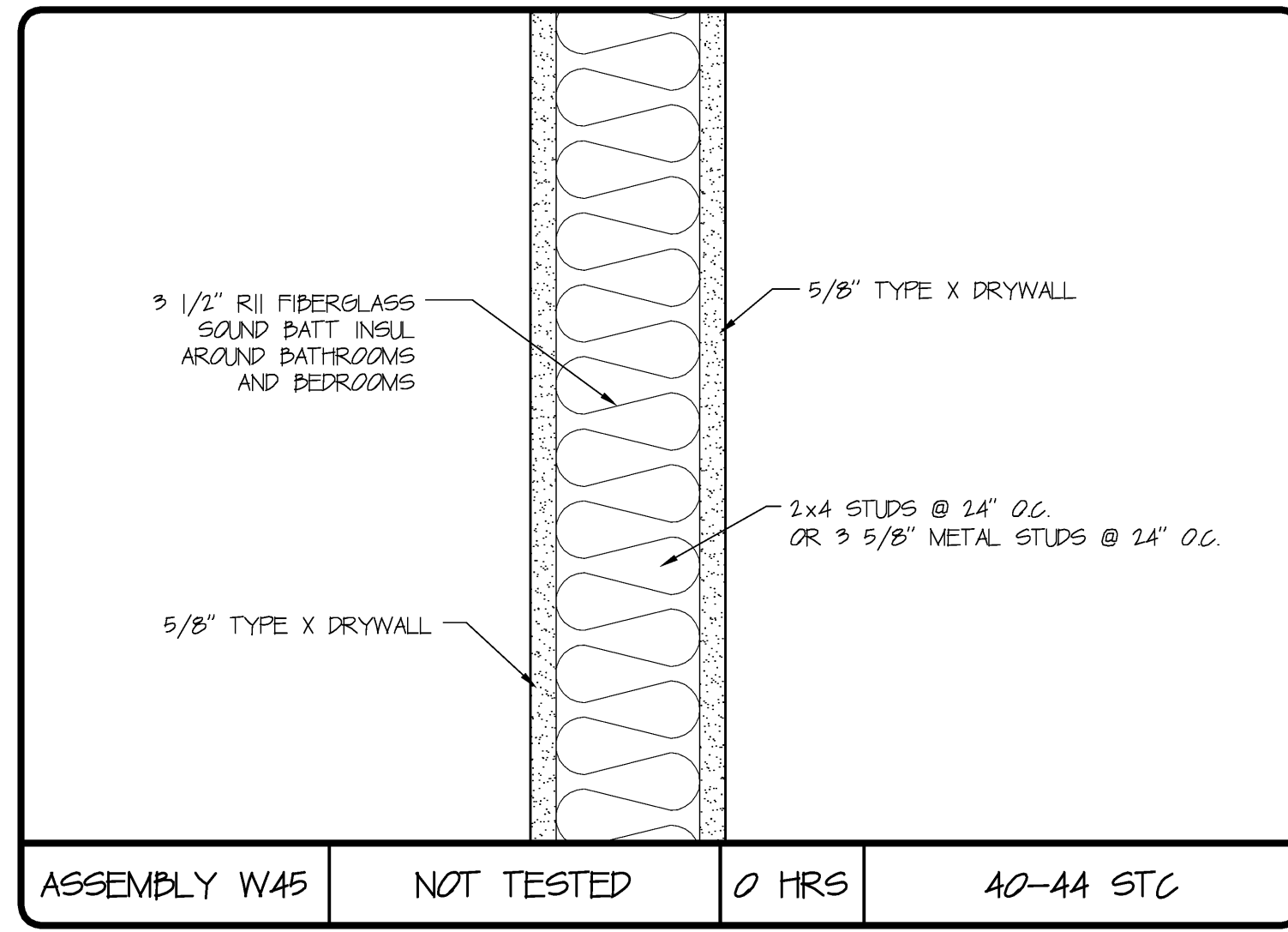
ASSEMBLY W42 UL U311/GA WP 3330 1 HR 50-54 STC



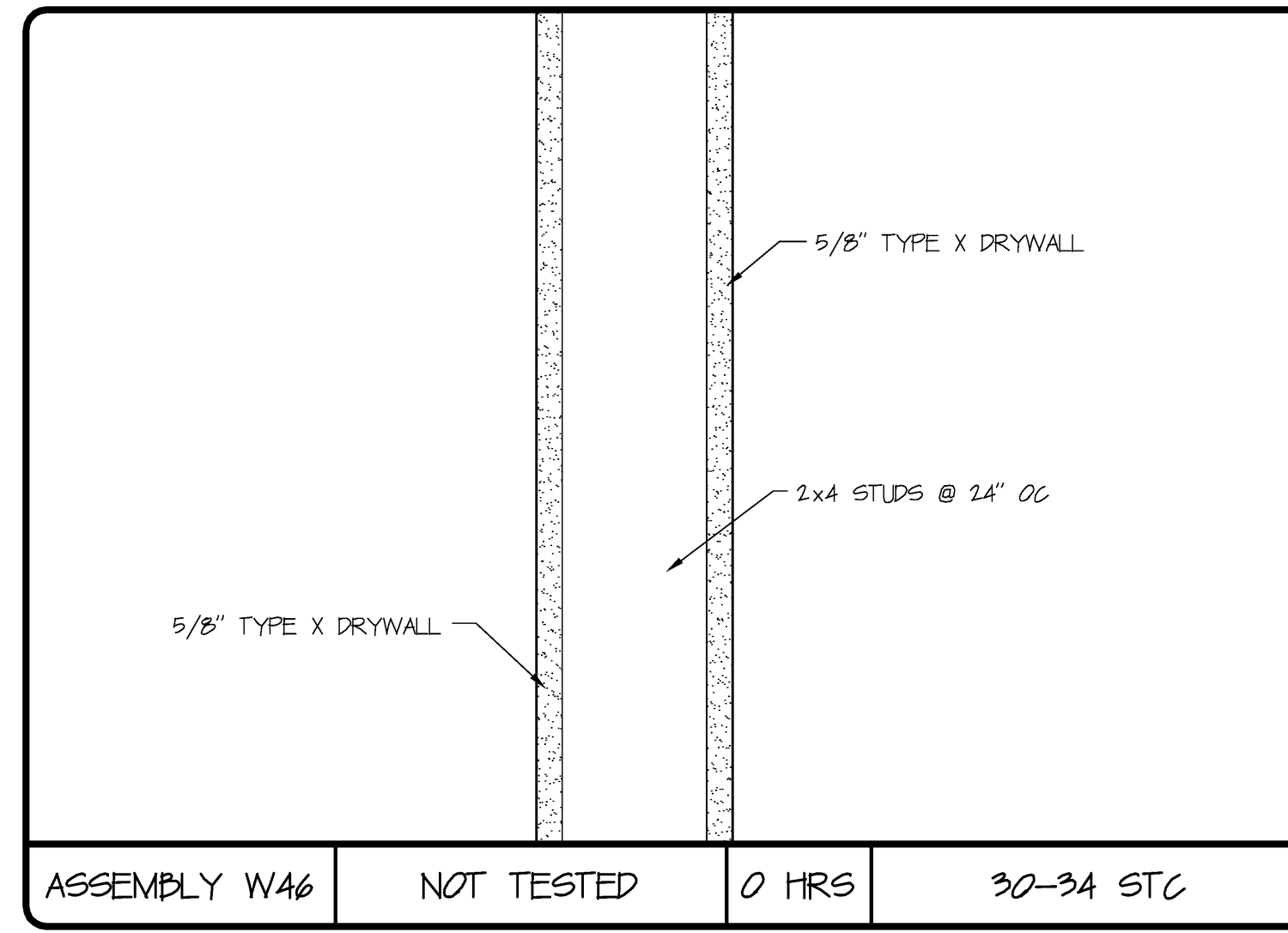
ASSEMBLY W43 UL U309 OR U465 1 HR 40-44 STC



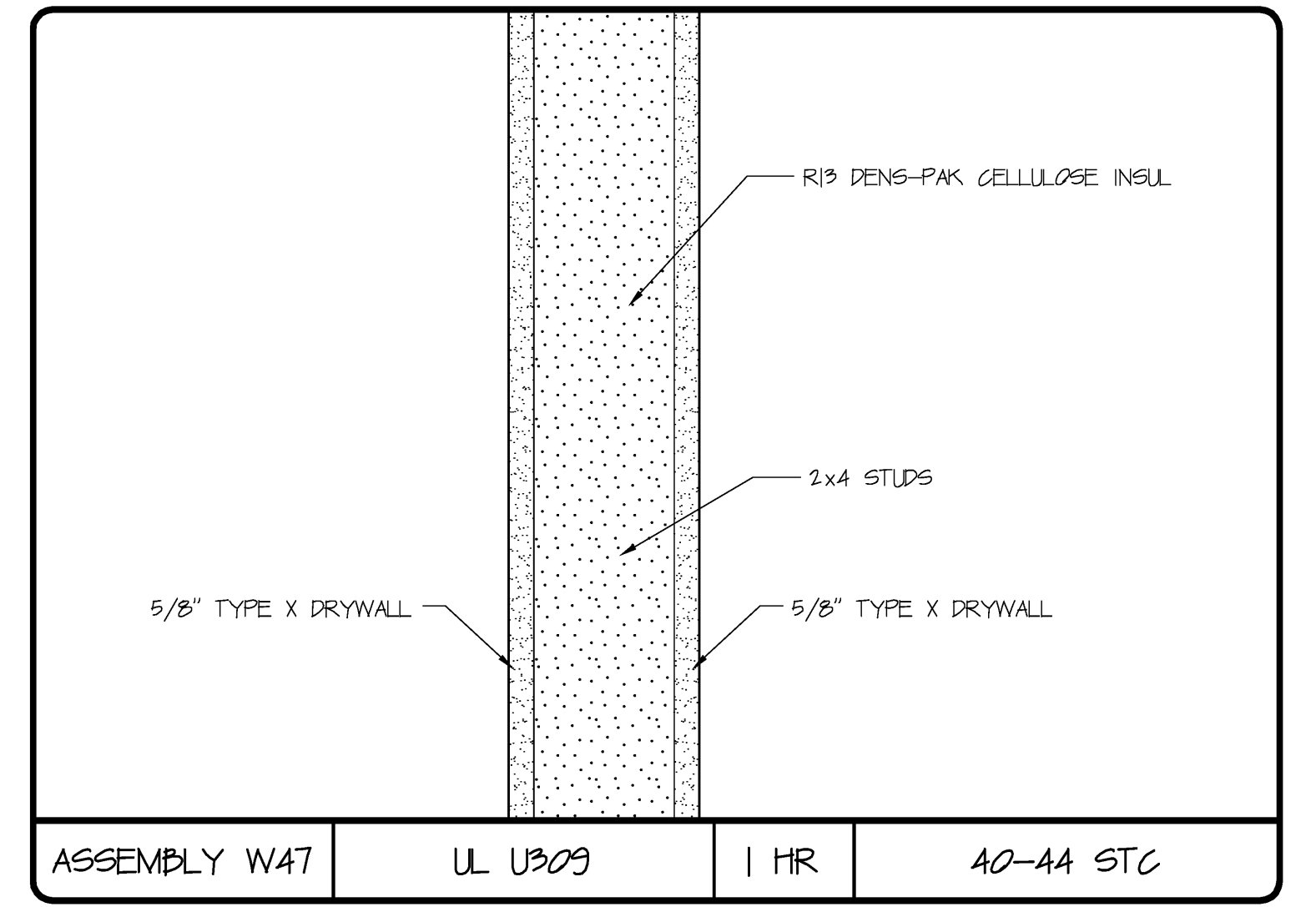
ASSEMBLY W44 UL U309 OR U465 1 HR 30-34 STC



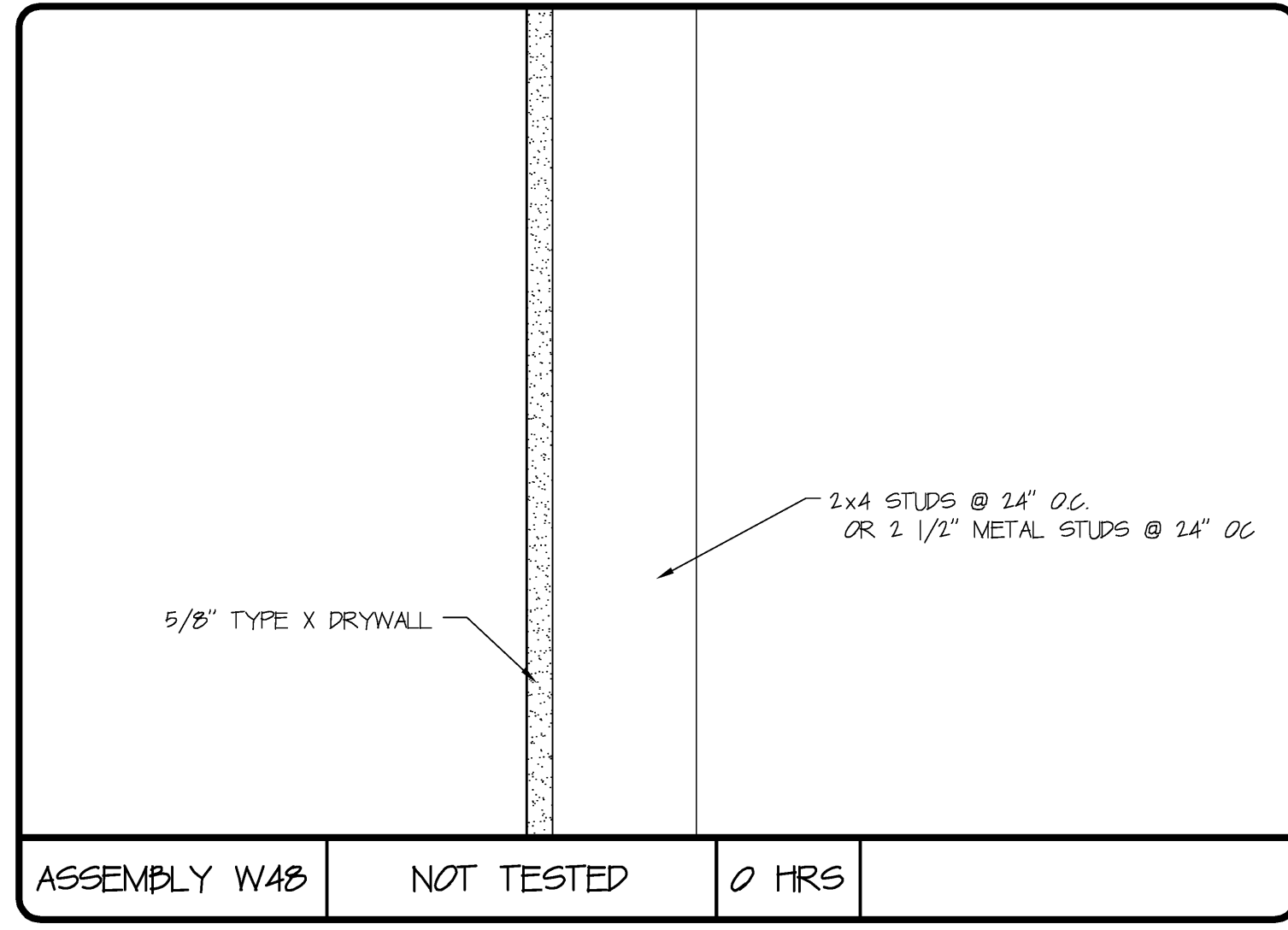
ASSEMBLY W45 NOT TESTED 0 HRS 40-44 STC



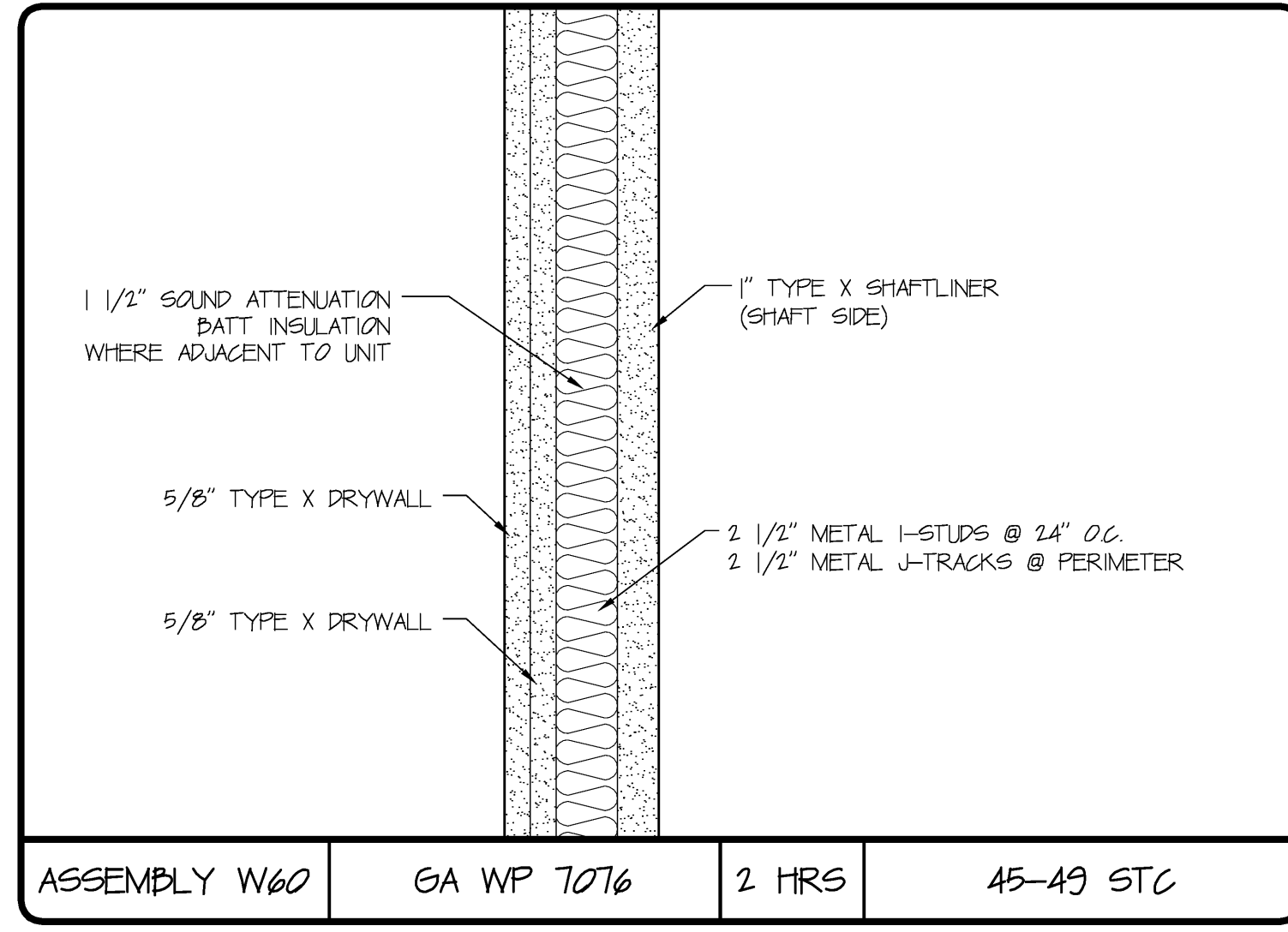
ASSEMBLY W46 NOT TESTED 0 HRS 30-34 STC



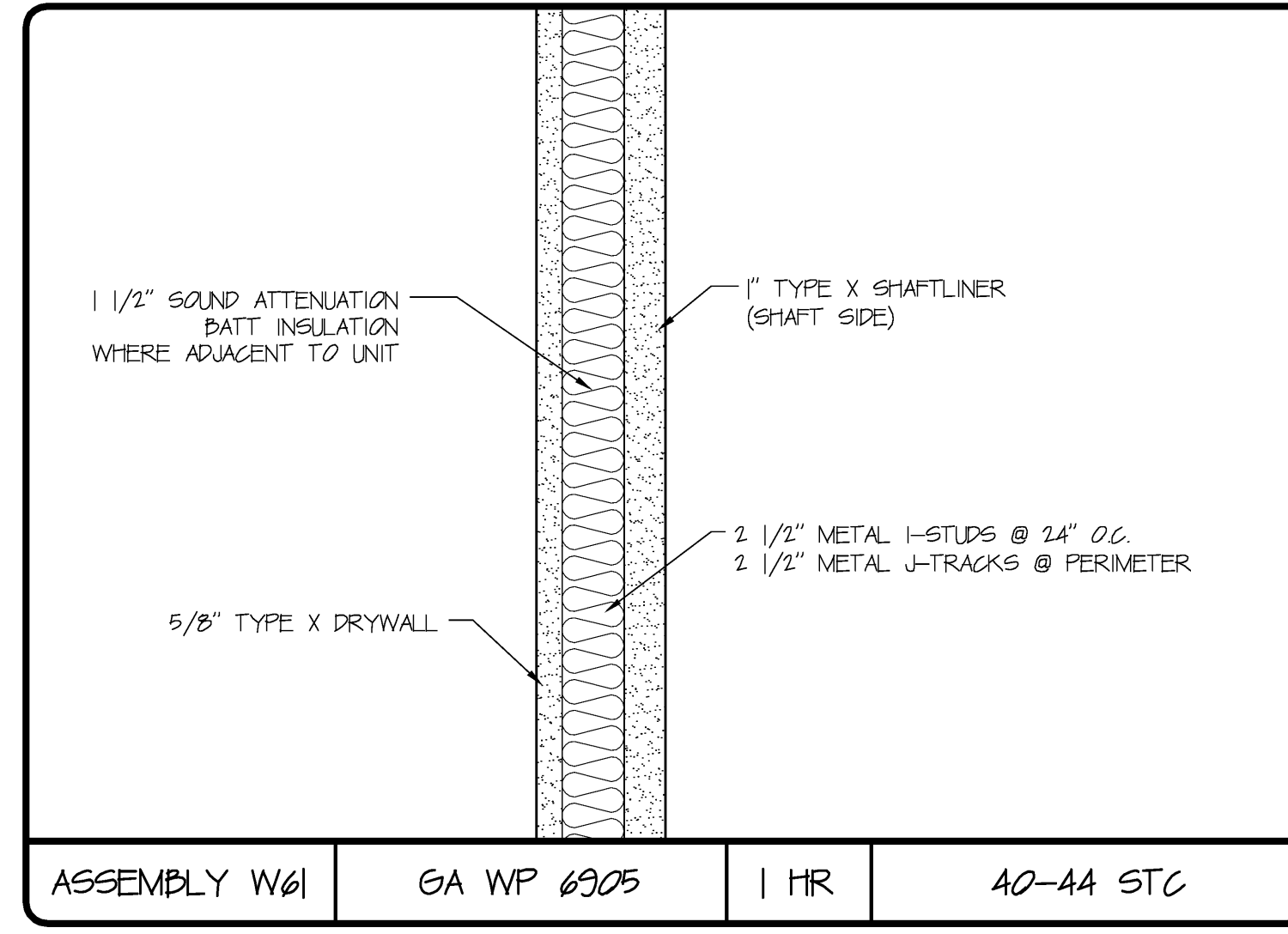
ASSEMBLY W47 UL U309 1 HR 40-44 STC



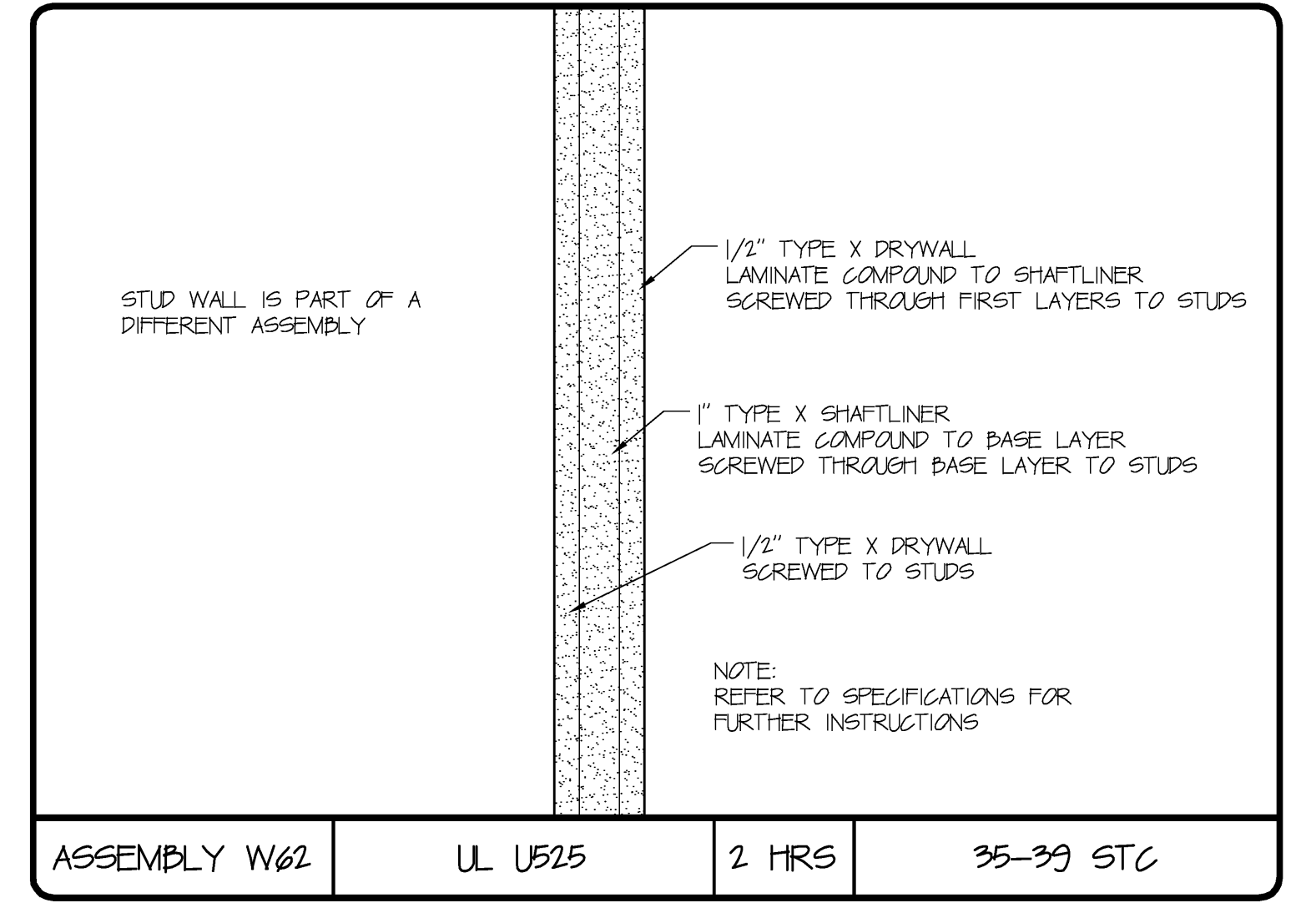
ASSEMBLY W48 NOT TESTED 0 HRS



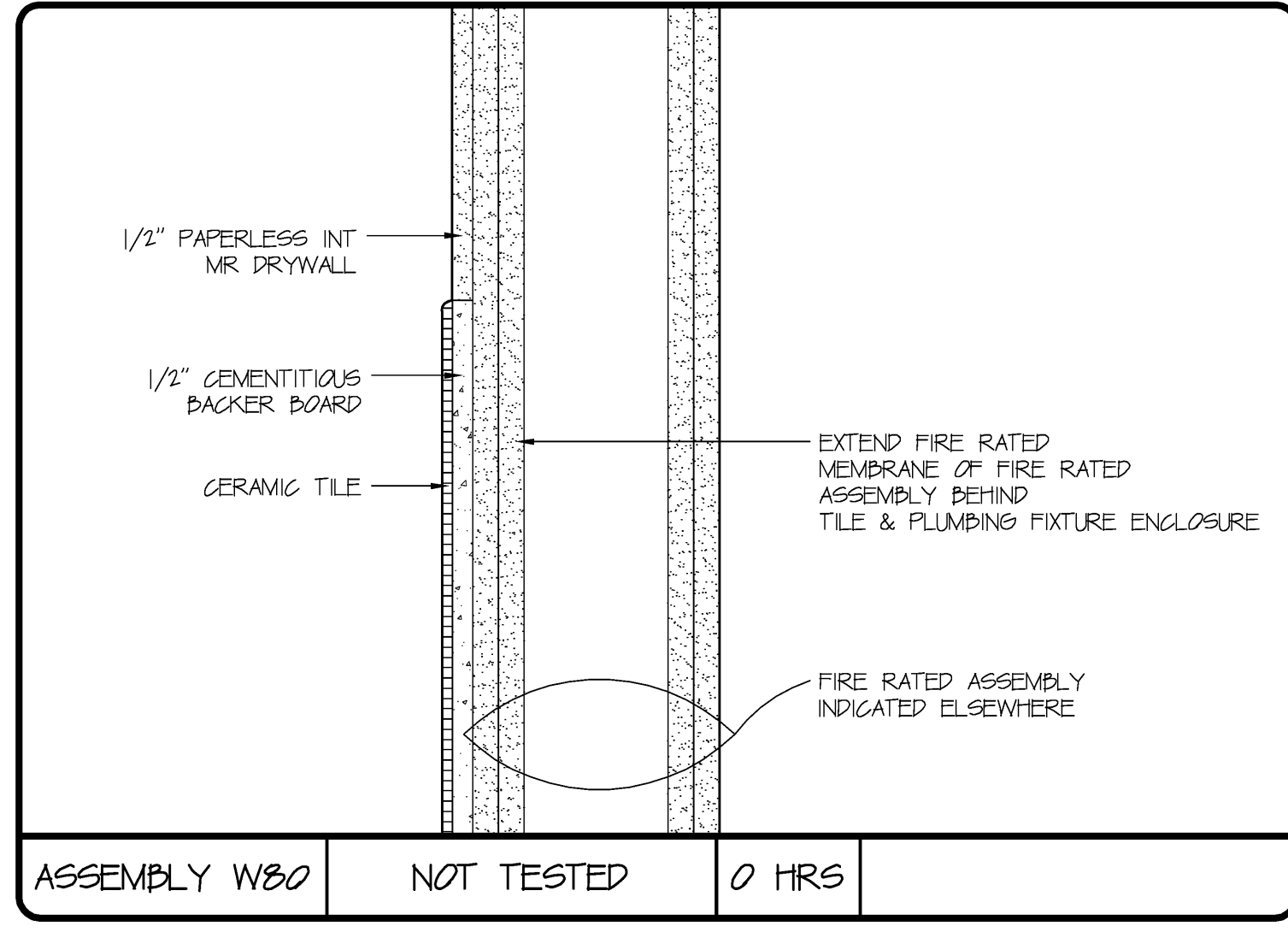
ASSEMBLY W60 GA WP 7076 2 HRS 45-49 STC



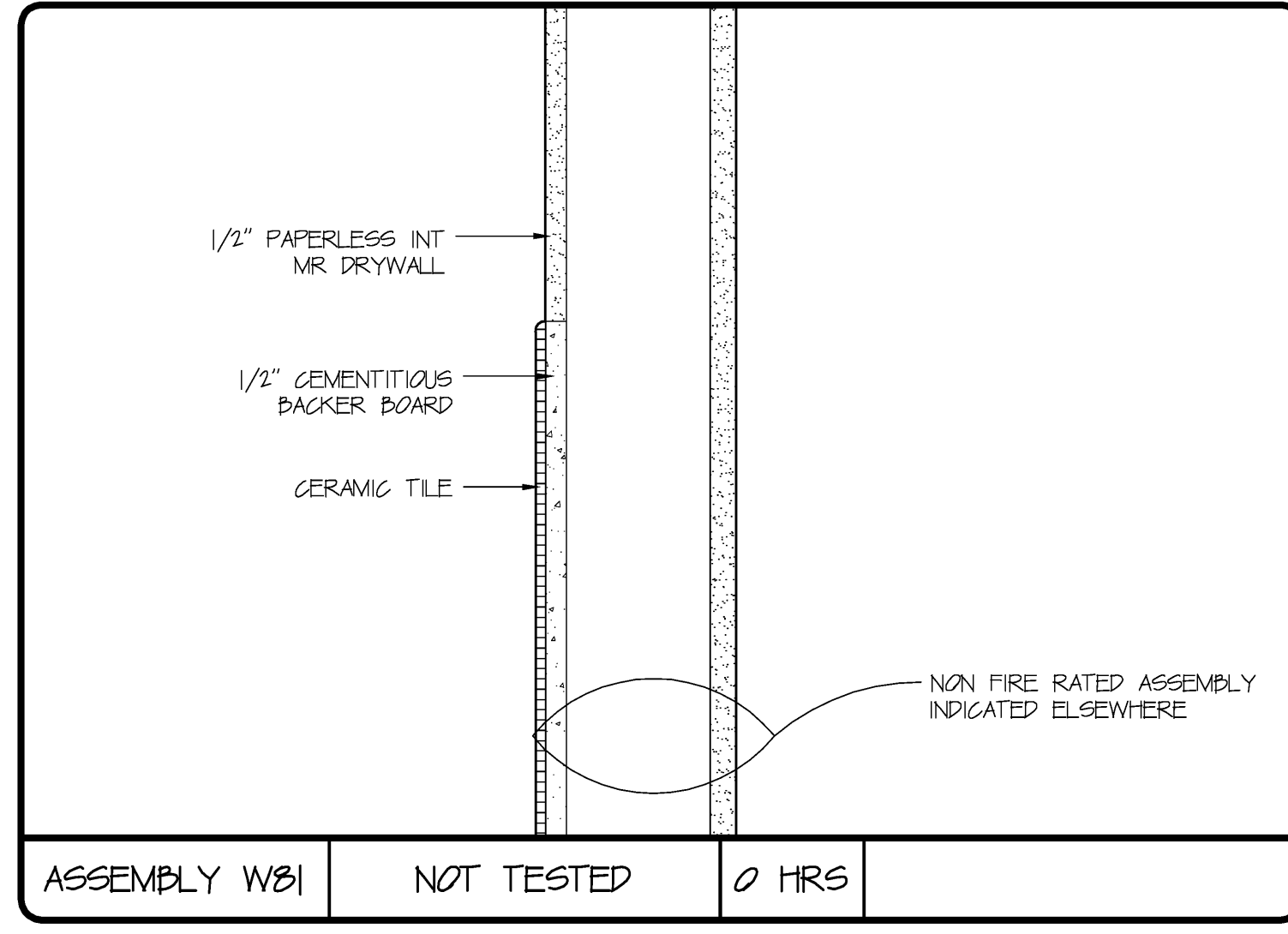
ASSEMBLY W61 GA WP 6905 1 HR 40-44 STC



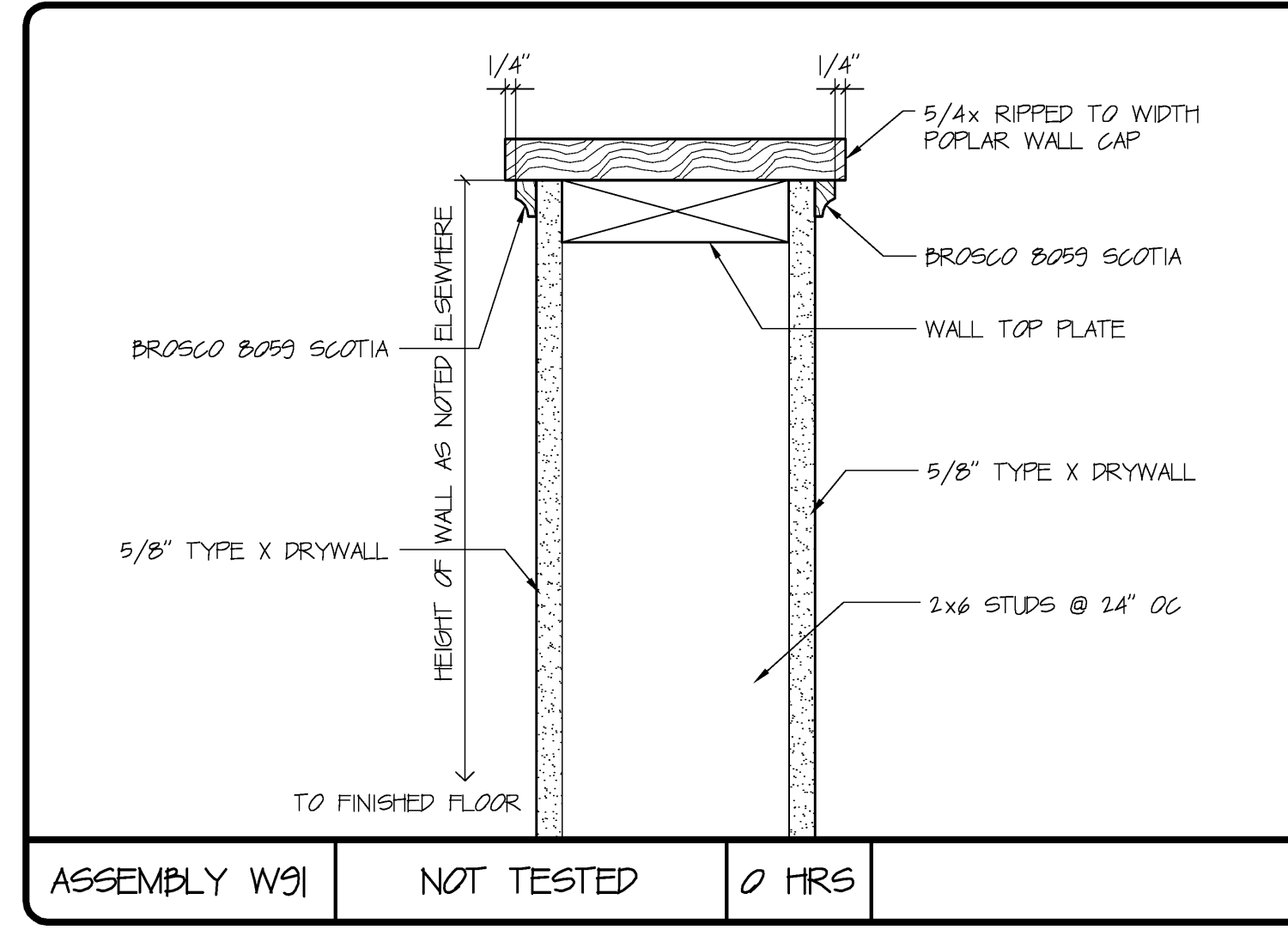
ASSEMBLY W62 UL U525 2 HRS 35-39 STC



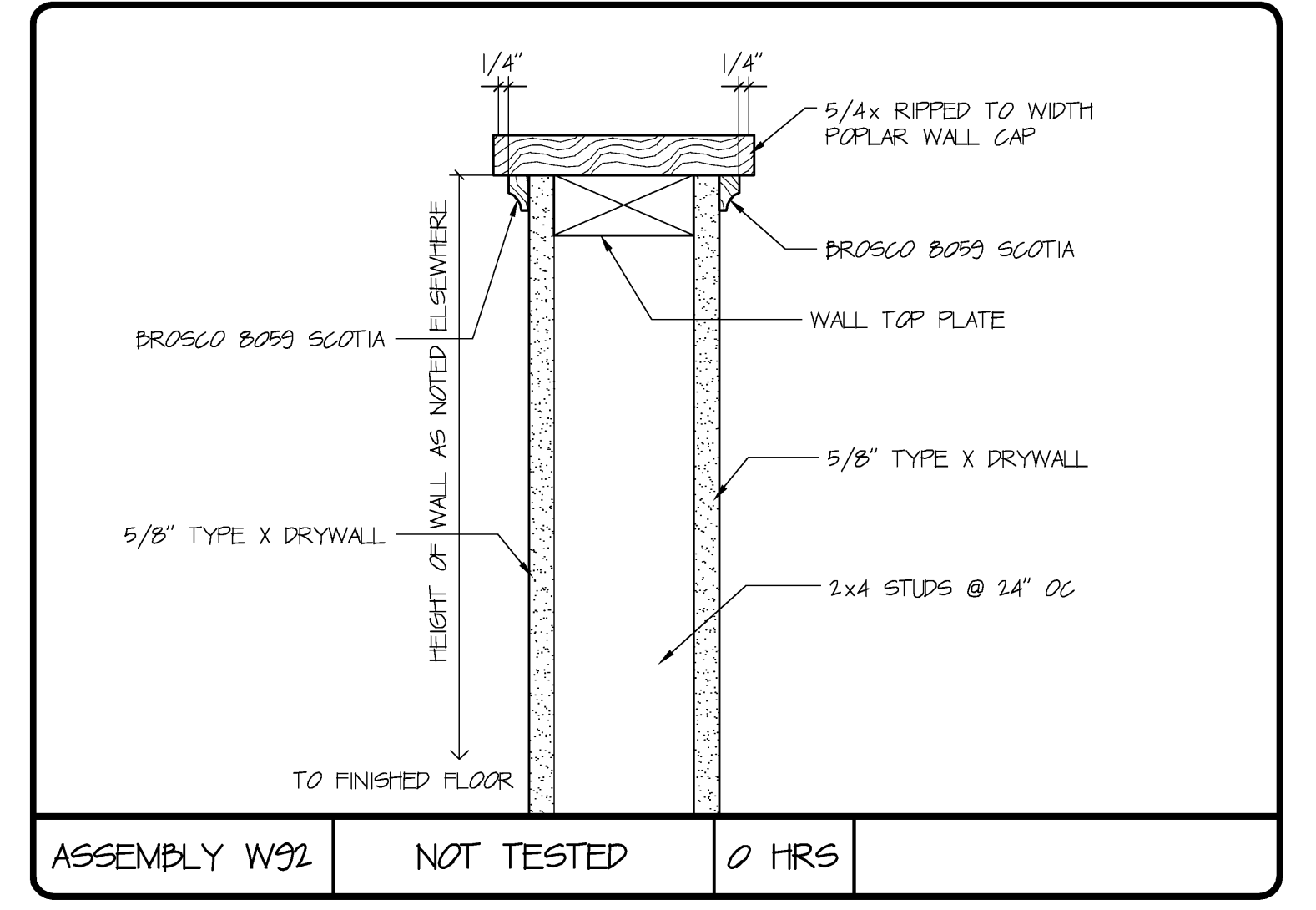
ASSEMBLY W80 NOT TESTED 0 HRS



ASSEMBLY W81 NOT TESTED 0 HRS



ASSEMBLY W91 NOT TESTED 0 HRS



ASSEMBLY W92 NOT TESTED 0 HRS

DAVID M. WHITE, ARCHITECT  
403 Tibbetts Hill Road  
P. O. Box 447  
Goffstown, NH 03045  
(603) 497-3405

THE VILLAGE AT OCEAN GATE, LLC  
c/o Atlas Investment Group, LLC  
35 Fay Street, Suite 107B  
Boston, MA 02118

THE BAY HOUSE  
Middle Street  
Portland, Maine

ASSEMBLY SCHEDULES  
Scale: NOT TO SCALE  
Commission No.: 06-008  
Date: July 15, 2008

REVISIONS:

DRG. NO.  
**AS.4**