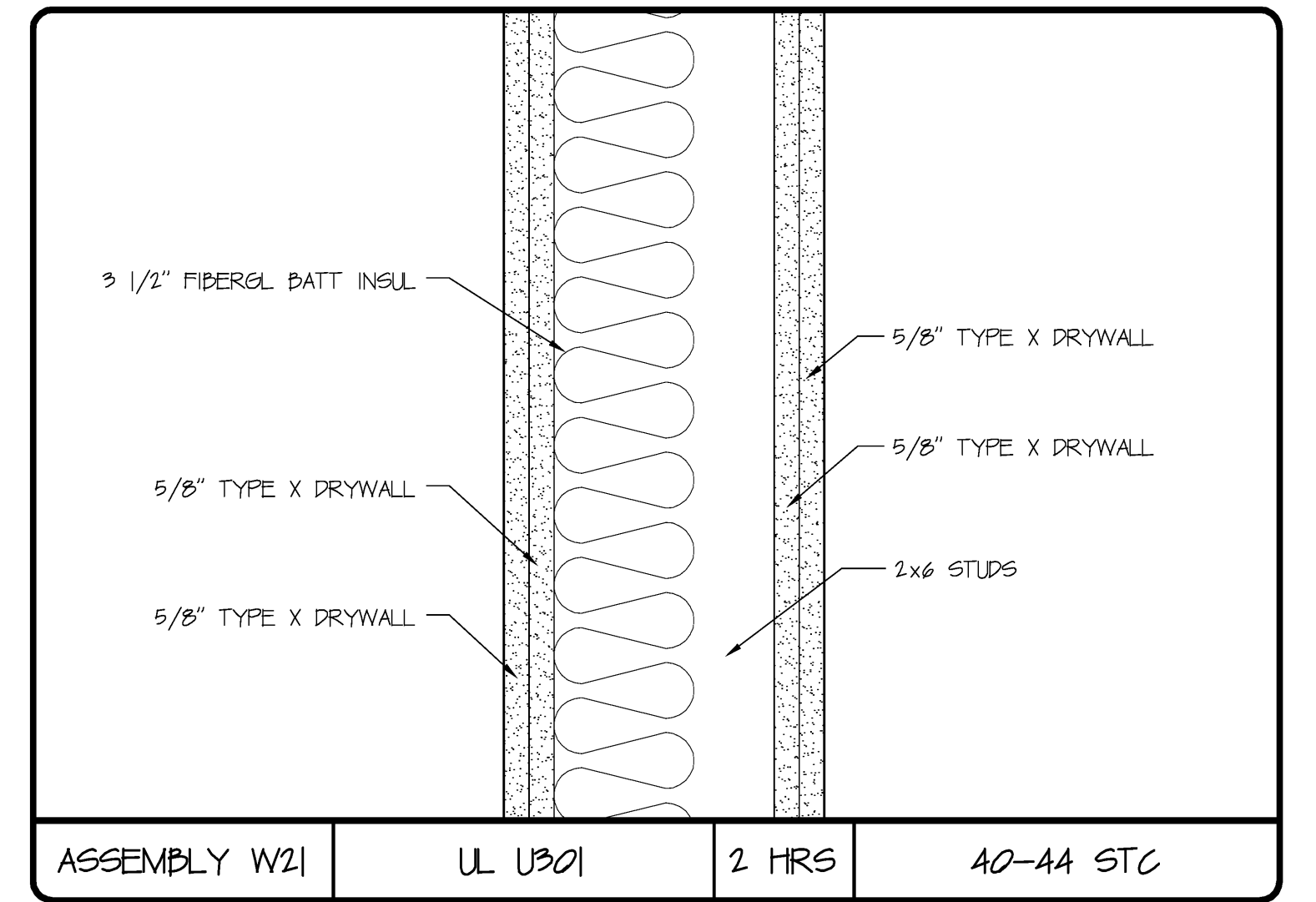
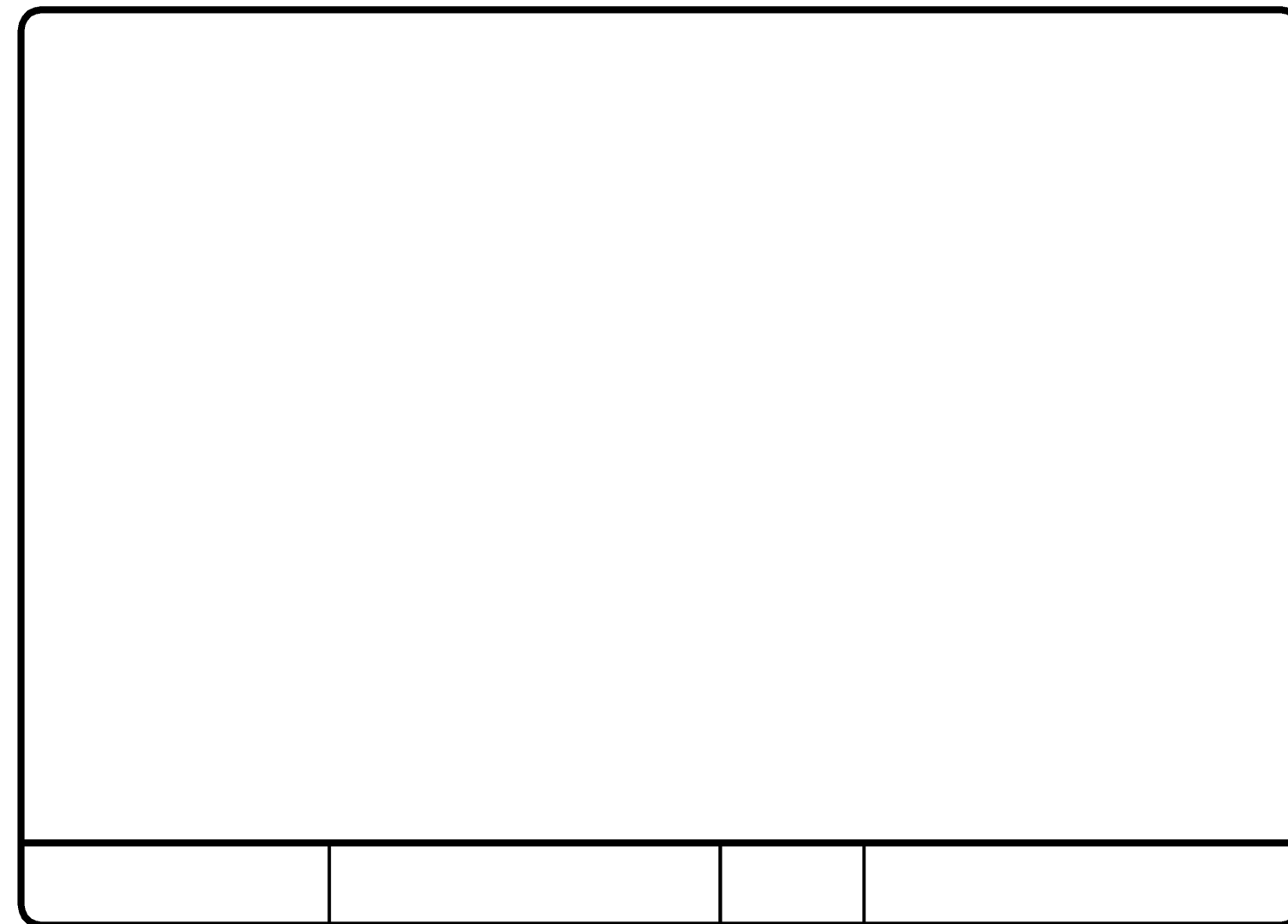
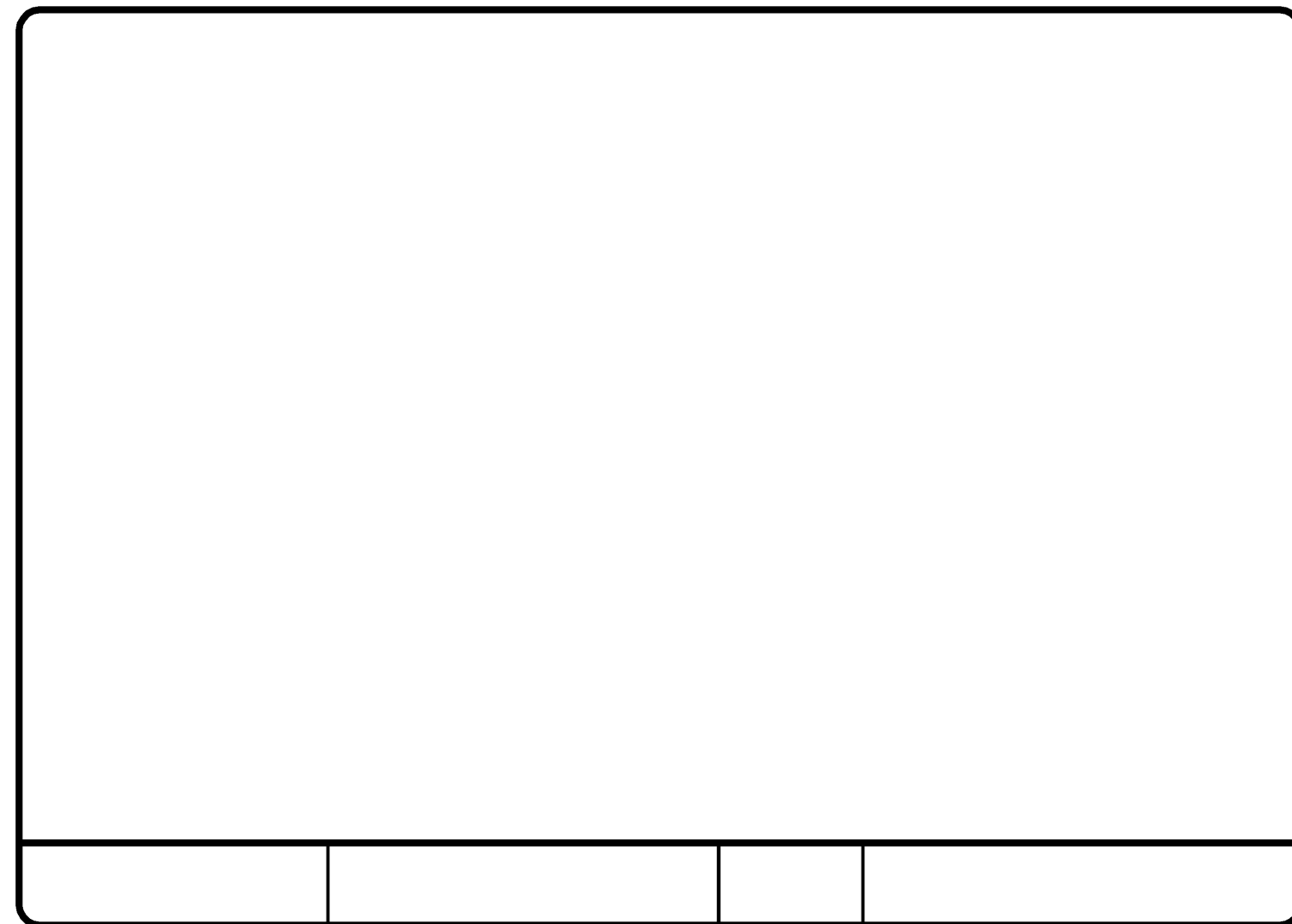


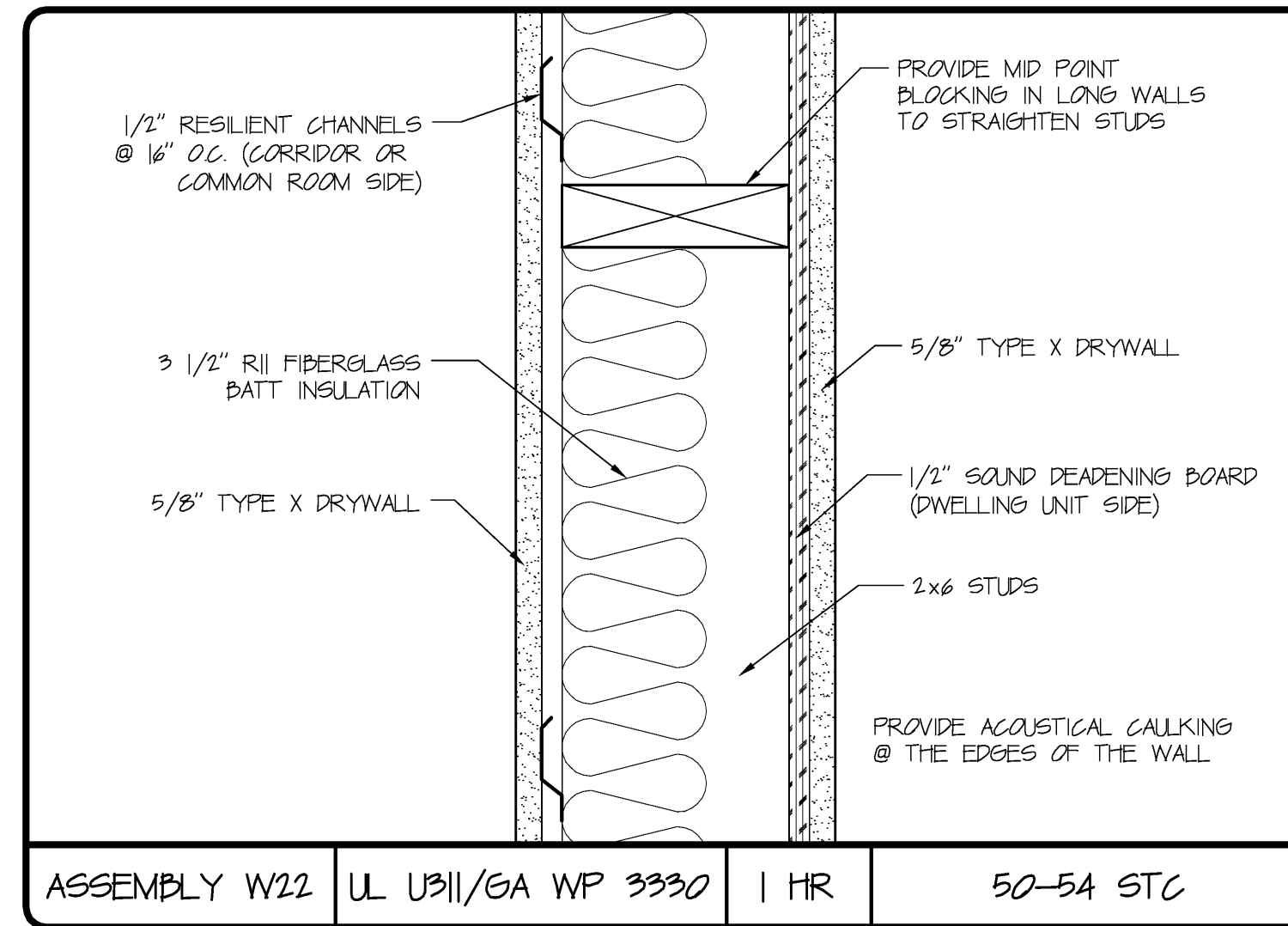
ASSEMBLY W20 UL U301/U525 2 HRS 55-59 STC



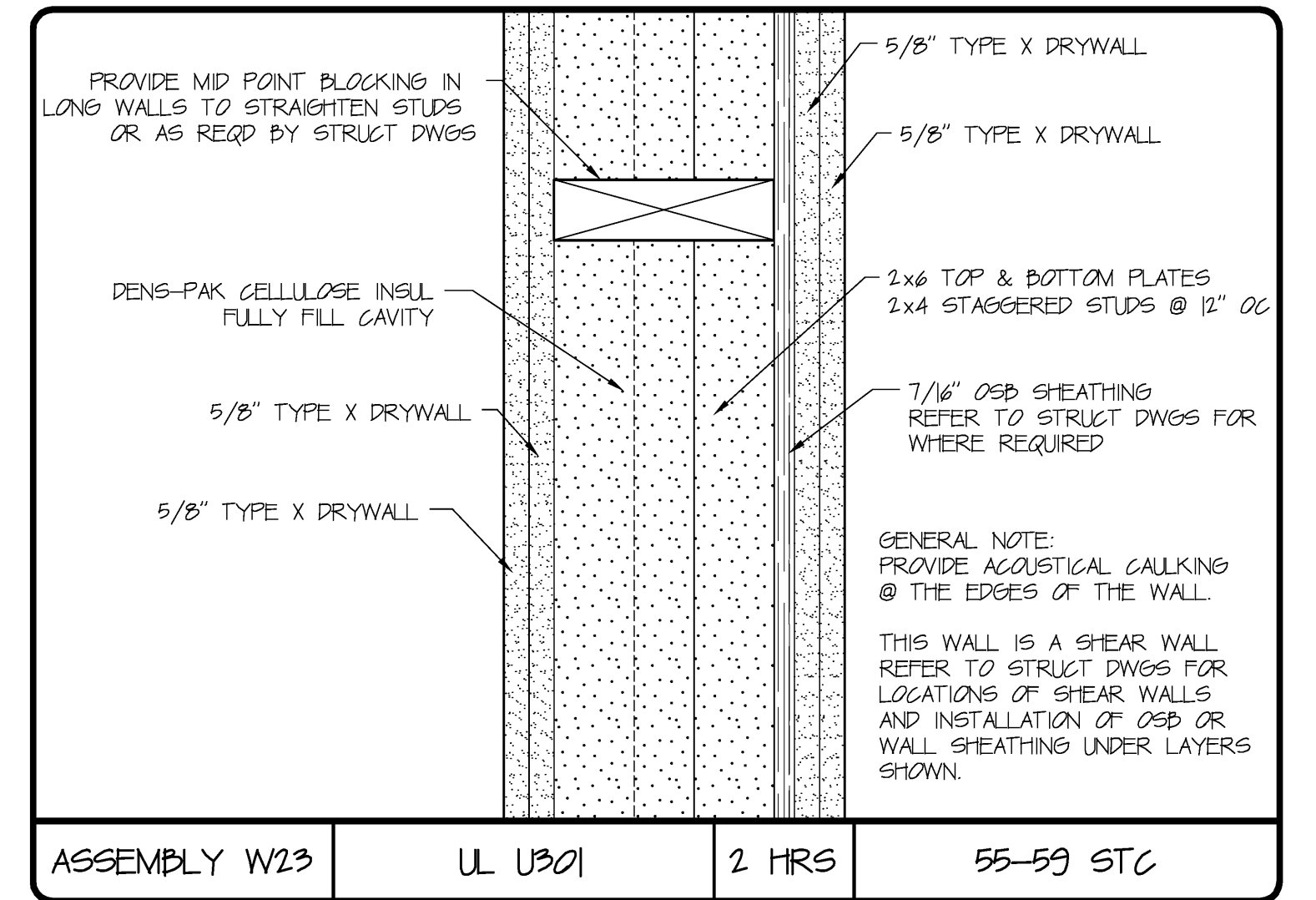
ASSEMBLY W21 UL U301 2 HRS 40-44 STC



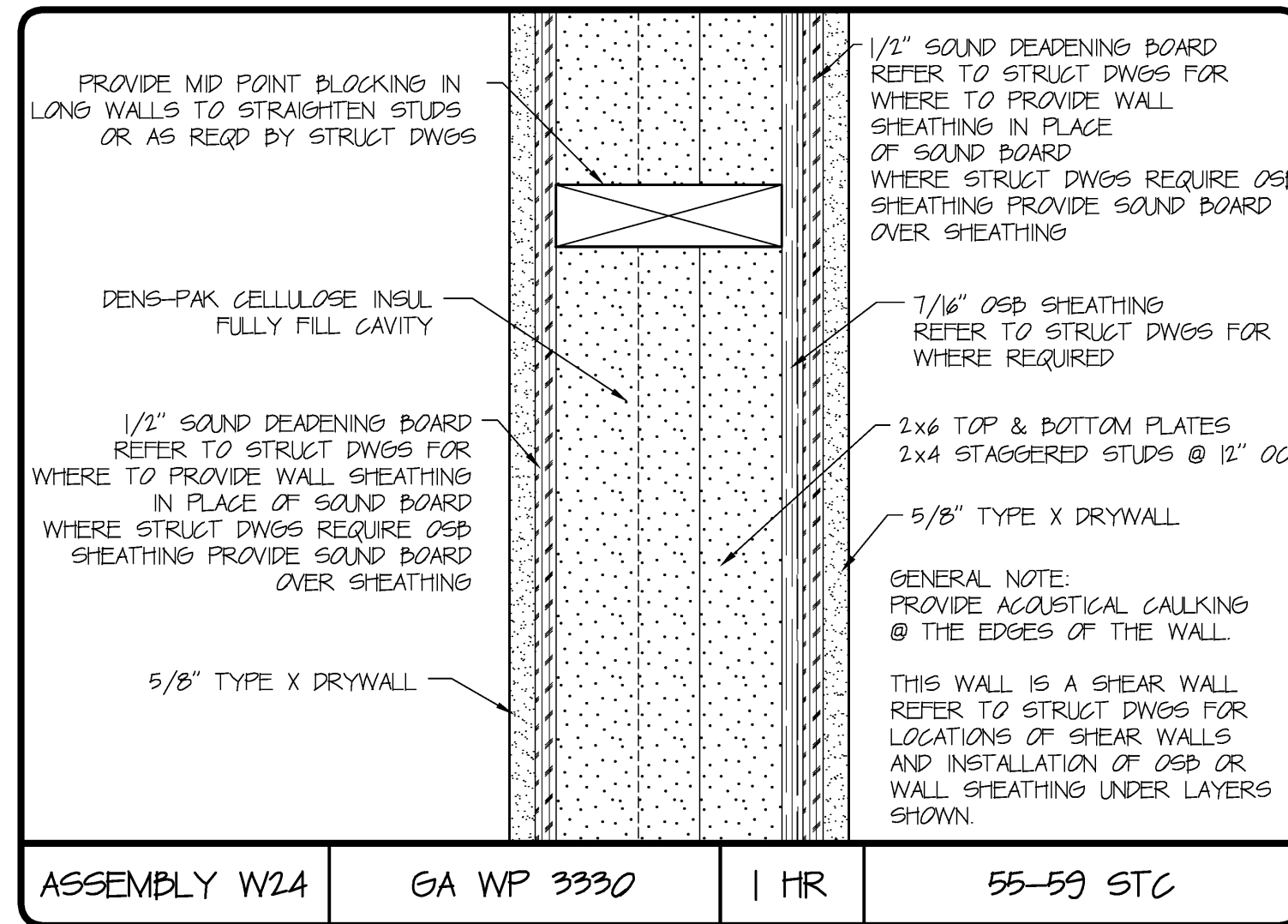
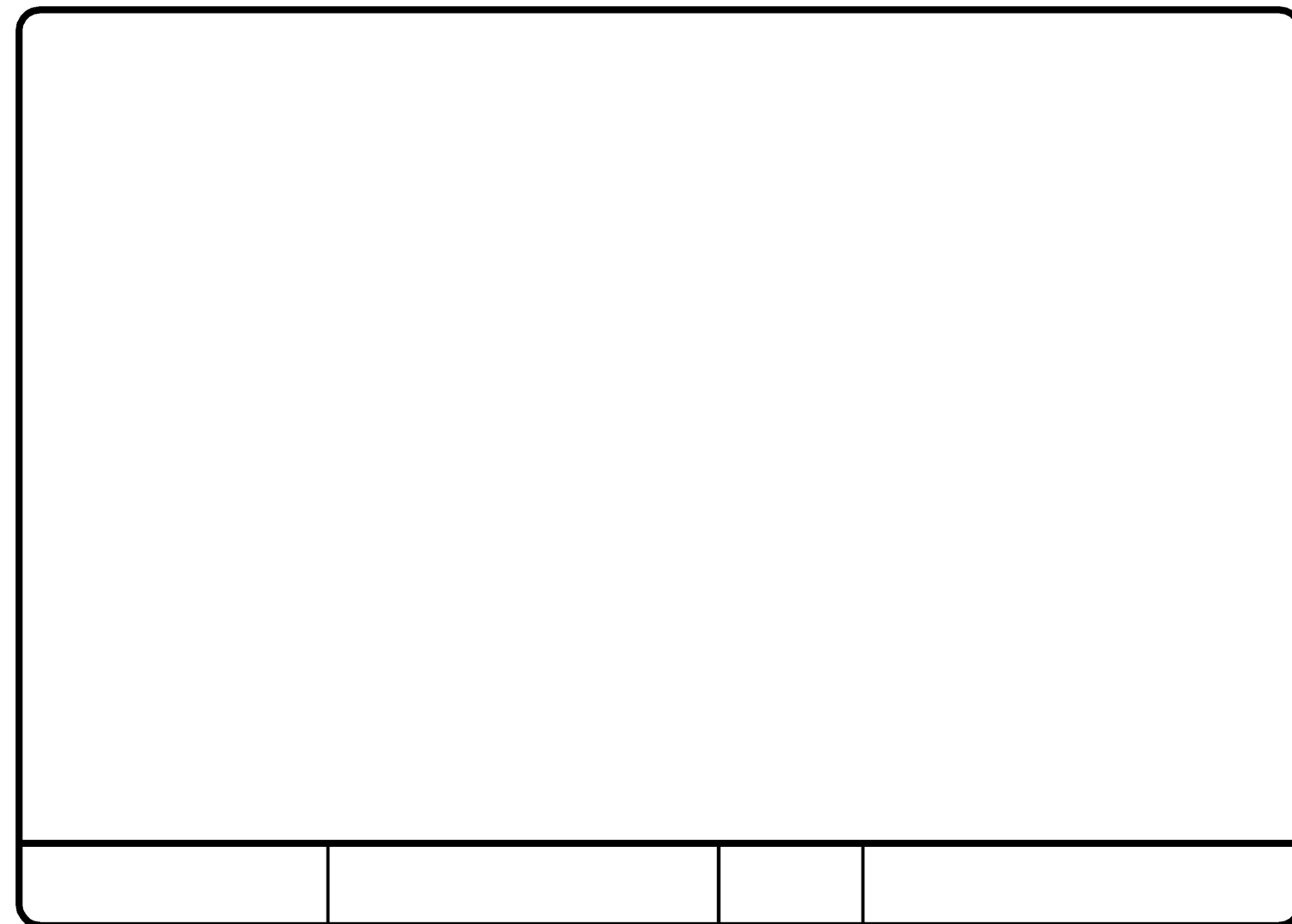
ASSEMBLY W22 UL U311/GA WP 3330 1 HR 50-54 STC



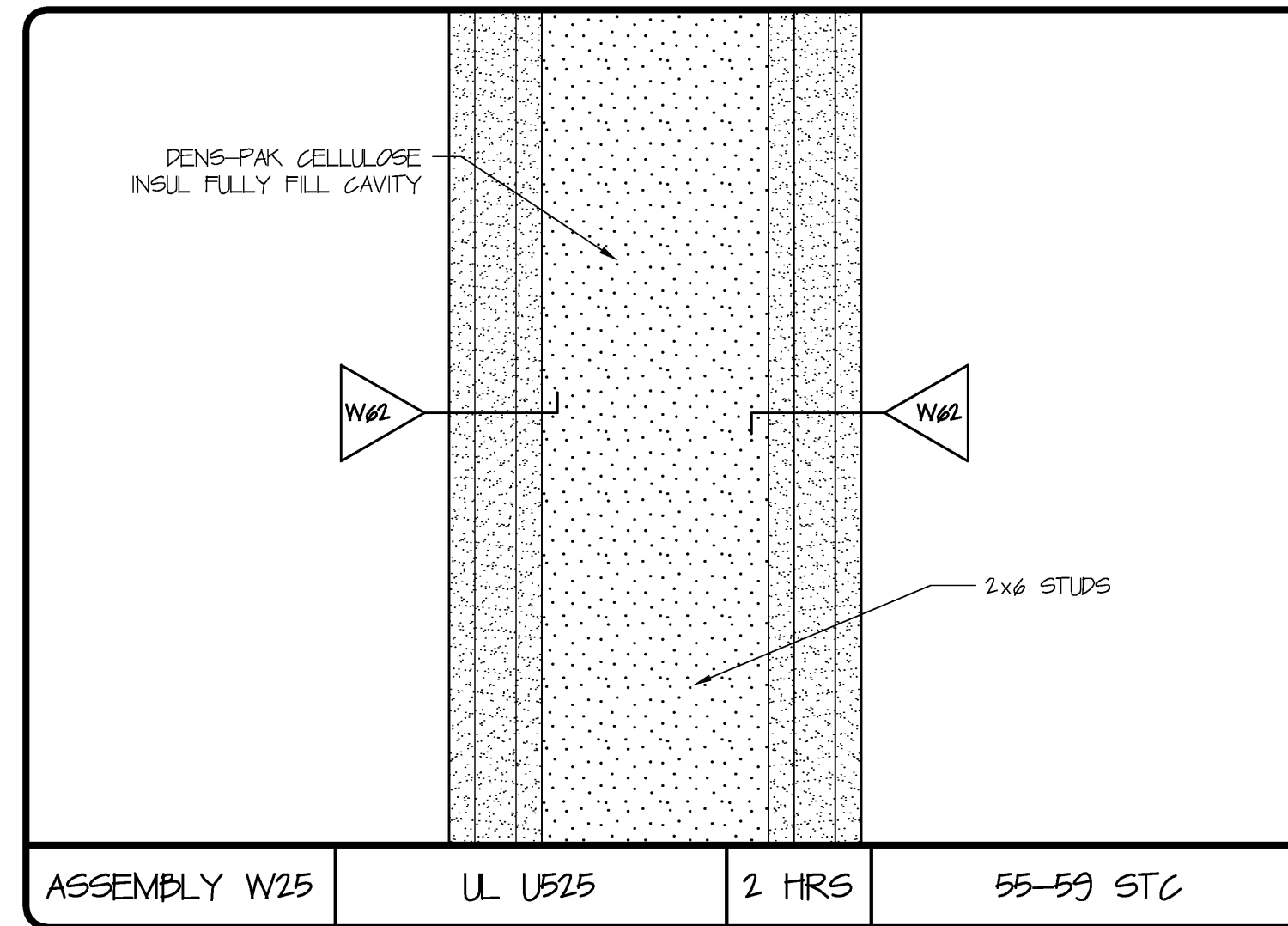
ASSEMBLY W23 UL U301 2 HRS 55-59 STC



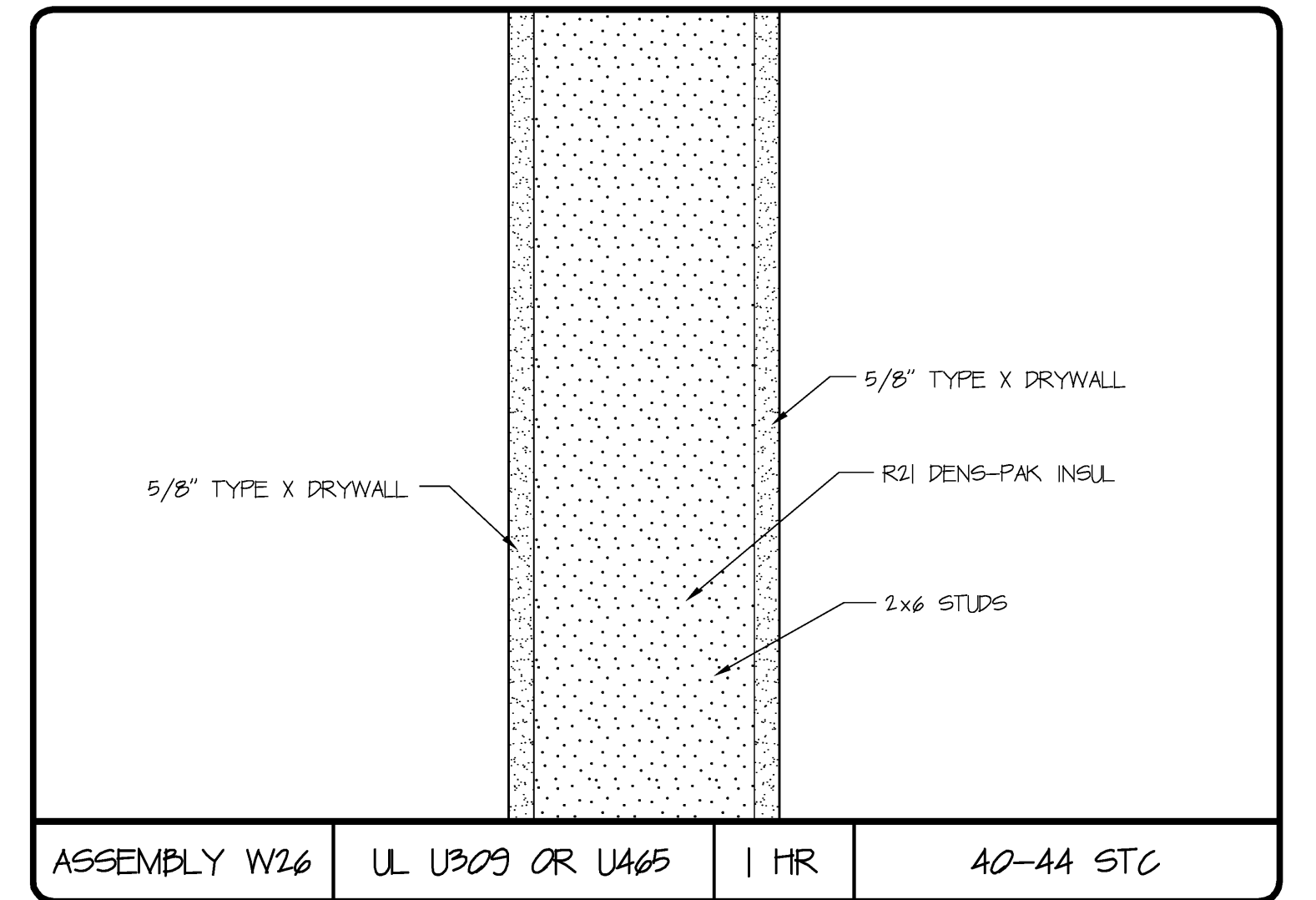
ASSEMBLY W23 UL U301 2 HRS 55-59 STC



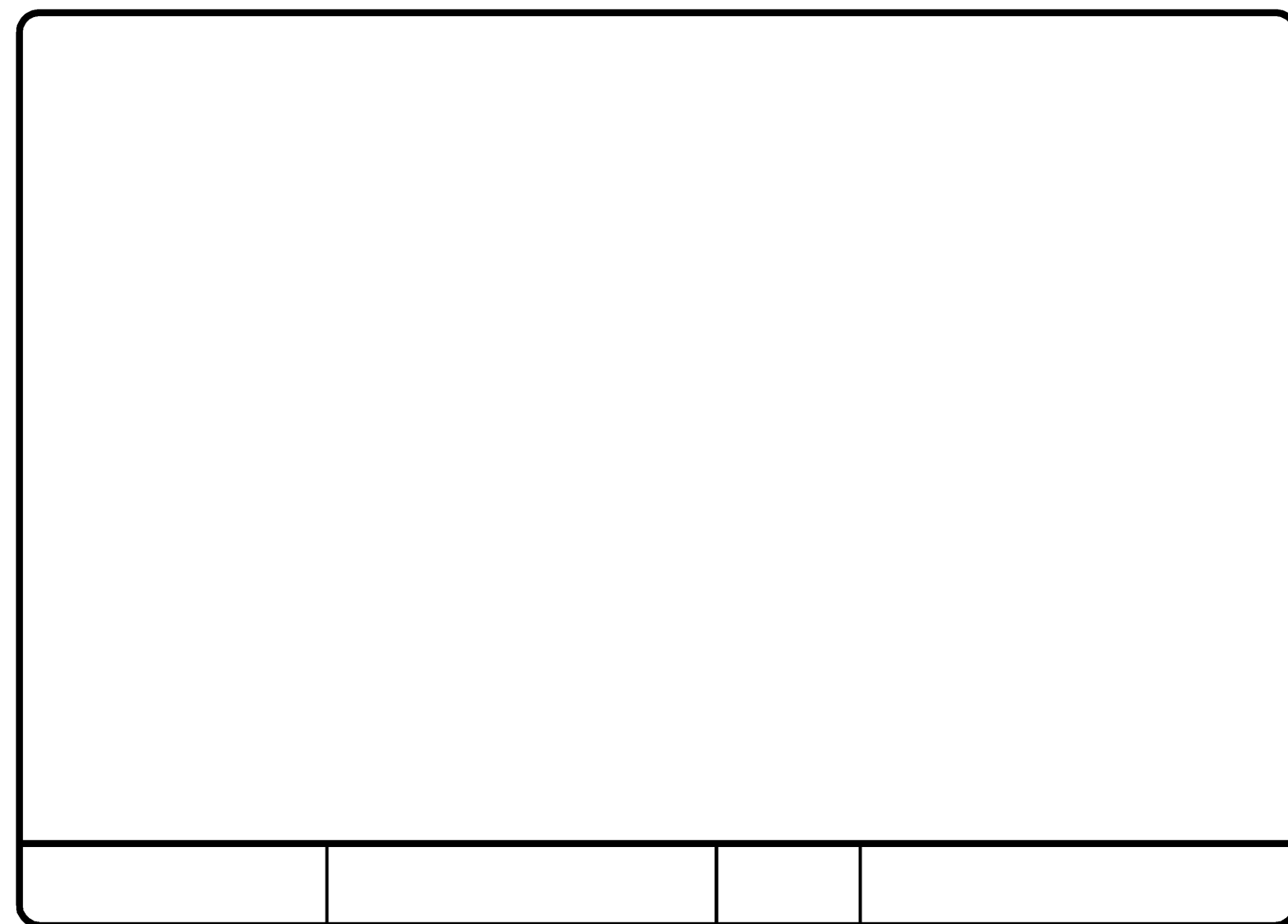
ASSEMBLY W24 GA WP 3330 1 HR 55-59 STC



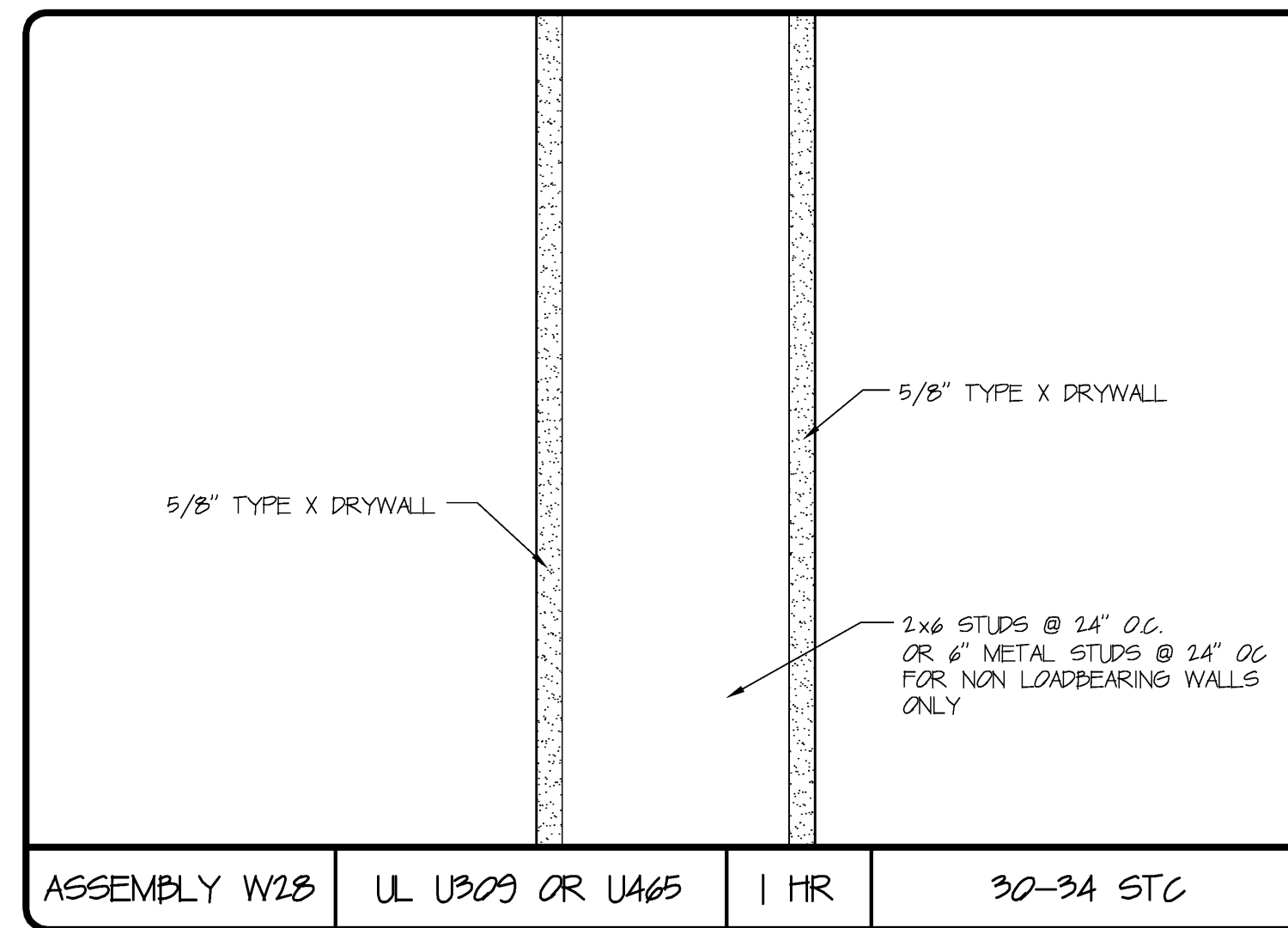
ASSEMBLY W25 UL U525 2 HRS 55-59 STC



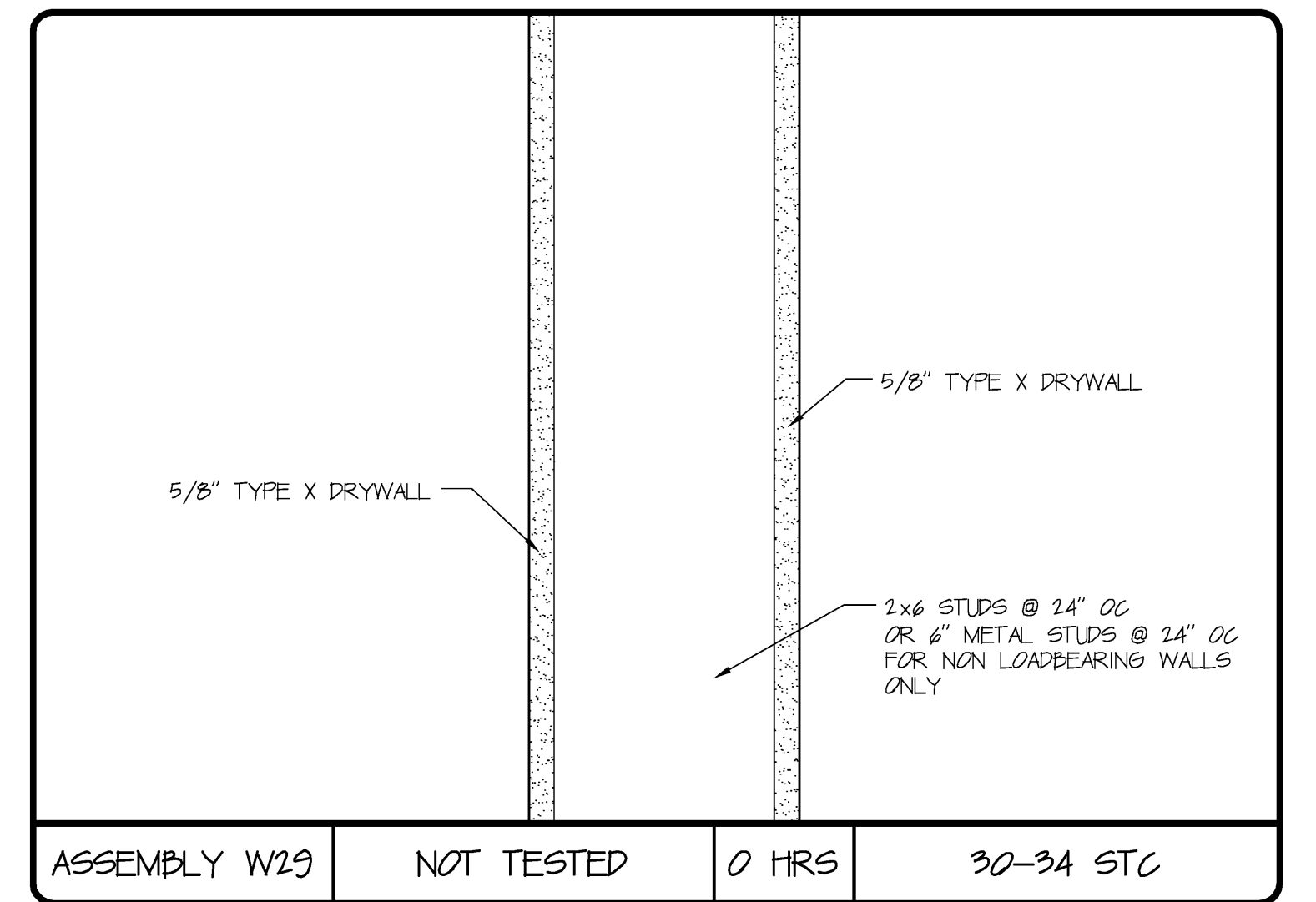
ASSEMBLY W26 UL U309 OR U465 1 HR 40-44 STC



ASSEMBLY W27 NOT TESTED 0 HRS 40-44 STC



ASSEMBLY W28 UL U309 OR U465 1 HR 30-34 STC



ASSEMBLY W29 NOT TESTED 0 HRS 30-34 STC

DAVID M. WHITE, ARCHITECT  
4029 Tibbetts Hill Road  
P. O. Box 447  
Goffstown, NH 03045  
(603) 497-3405

THE VILLAGE AT OCEAN GATE, LLC  
c/o Atlas Investment Group, LLC  
35 Fay Street, Suite 107B  
Boston, MA 02118

THE BAY HOUSE  
Middle Street  
Portland, Maine

ASSEMBLY SCHEDULES  
Scale: NOT TO SCALE  
Commission No.: 06-008  
Date: July 15, 2008

REVISIONS:

DWG. NO.  
**AS.2**