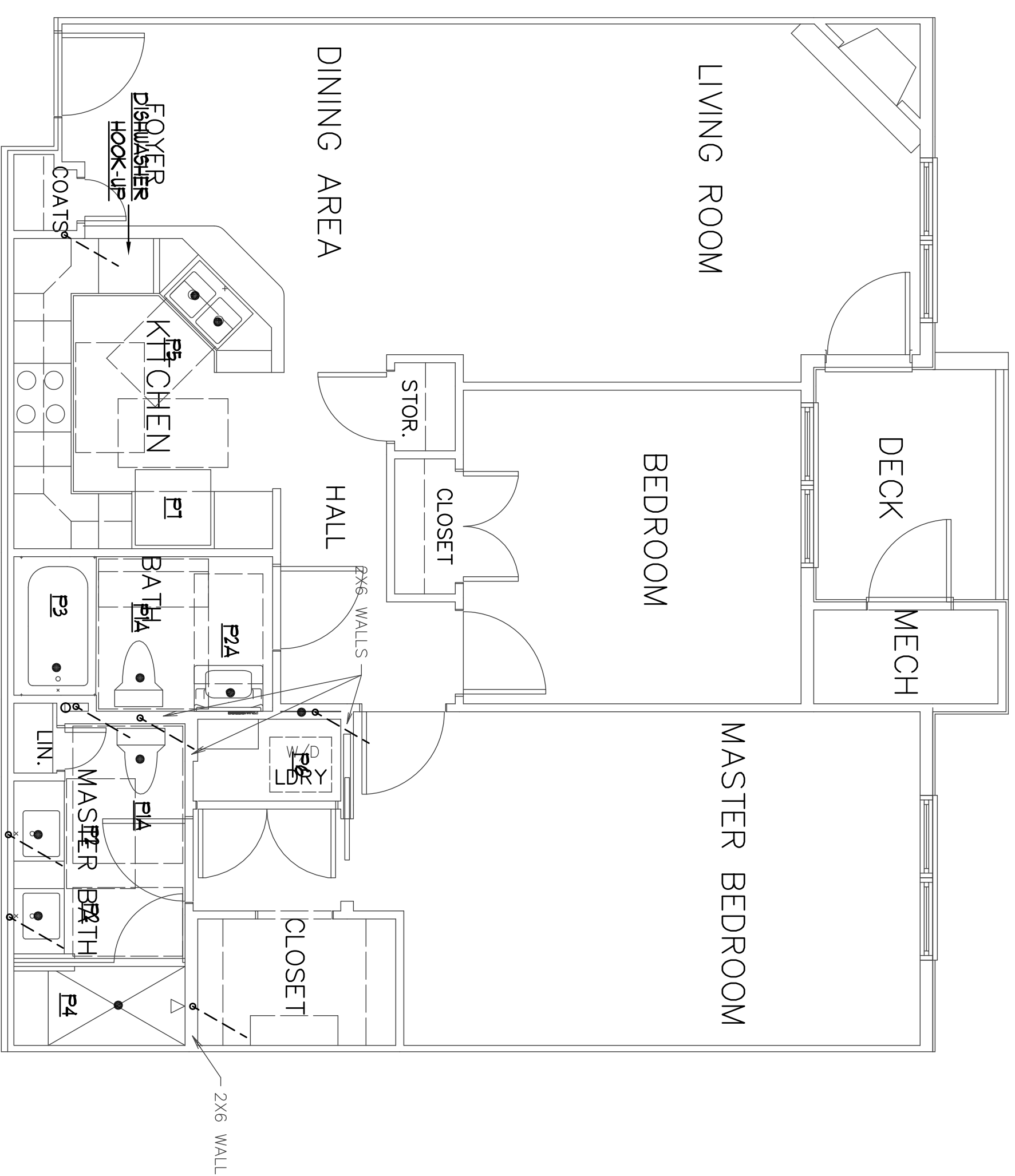


UNIT TYPE Q  
SCALE: 1/4" = 1'-0"



UNIT TYPE P  
SCALE: 1/4" = 1'-0"

General Note  
1. Unit Type P is similar to Unit Type Q. See piping layout for Unit Type Q for more information.

Revisions  
11/29/2012-INDERS LAB PIPING FOR  
CONSTRUCTION FOR PERMIT  
12/14/2012- FOR PERMIT  
1/14/2013- PLUMBING REVISIONS.  
2/6/2013- 100% For Review  
and Comment

Bay House  
Portland, ME



**BENNETT**  
ENGINEERING  
MECHANICAL • ELECTRICAL  
(207) 865-9475

Job No.: 3346  
Date: 12/14/12  
Scale: 1/8" = 1'-0" or A.N.  
Drawn by: SF Deel  
Checked by: SF Deel

Drawing Title:  
Unit Plans



Atlantic Comfort  
Systems, Inc.  
Mechanical Contractor • 207-284-4390  
882 Hill Street, Bridgford, ME 04005  
www.atlanticcomfort.com

P.18