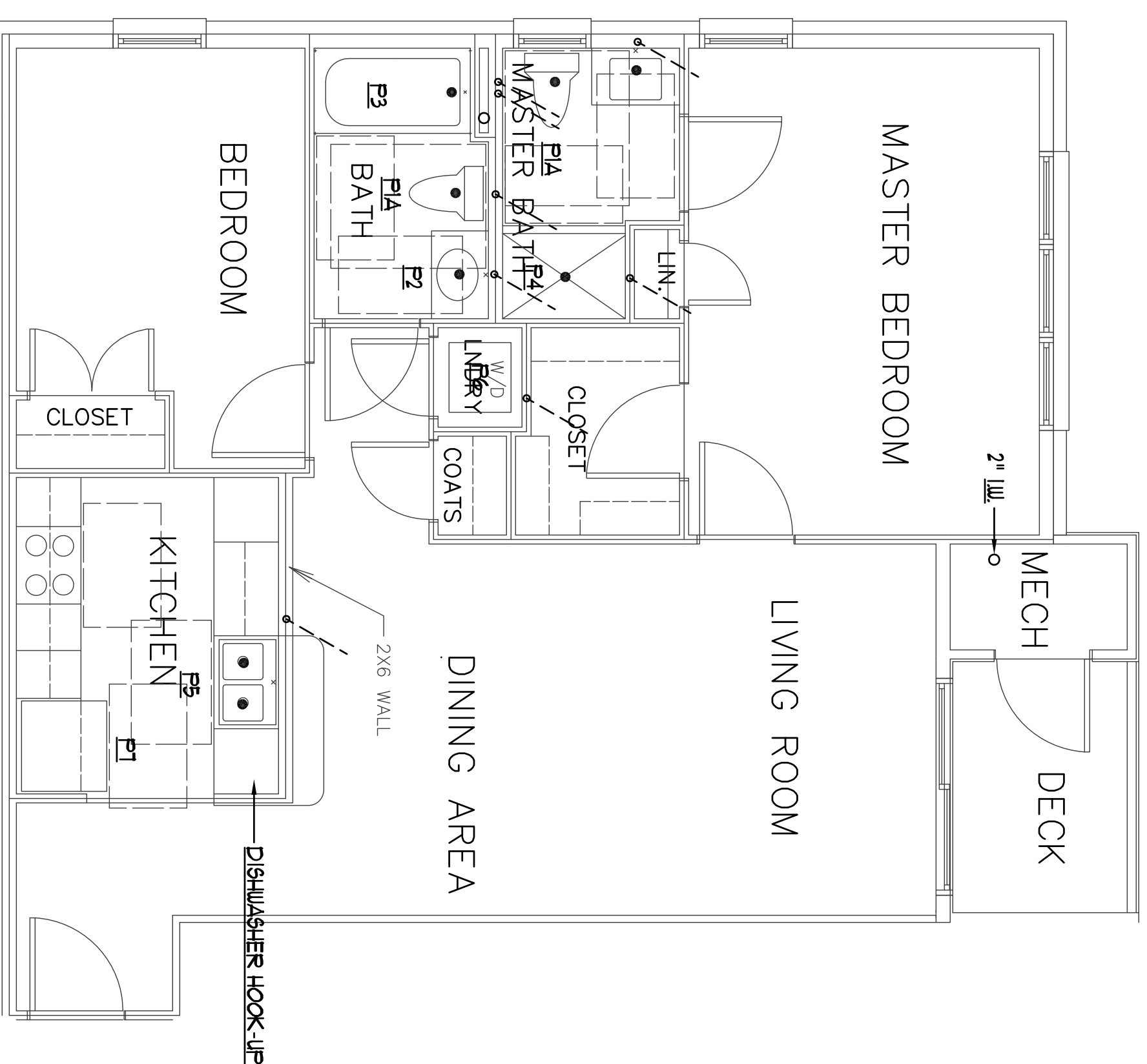
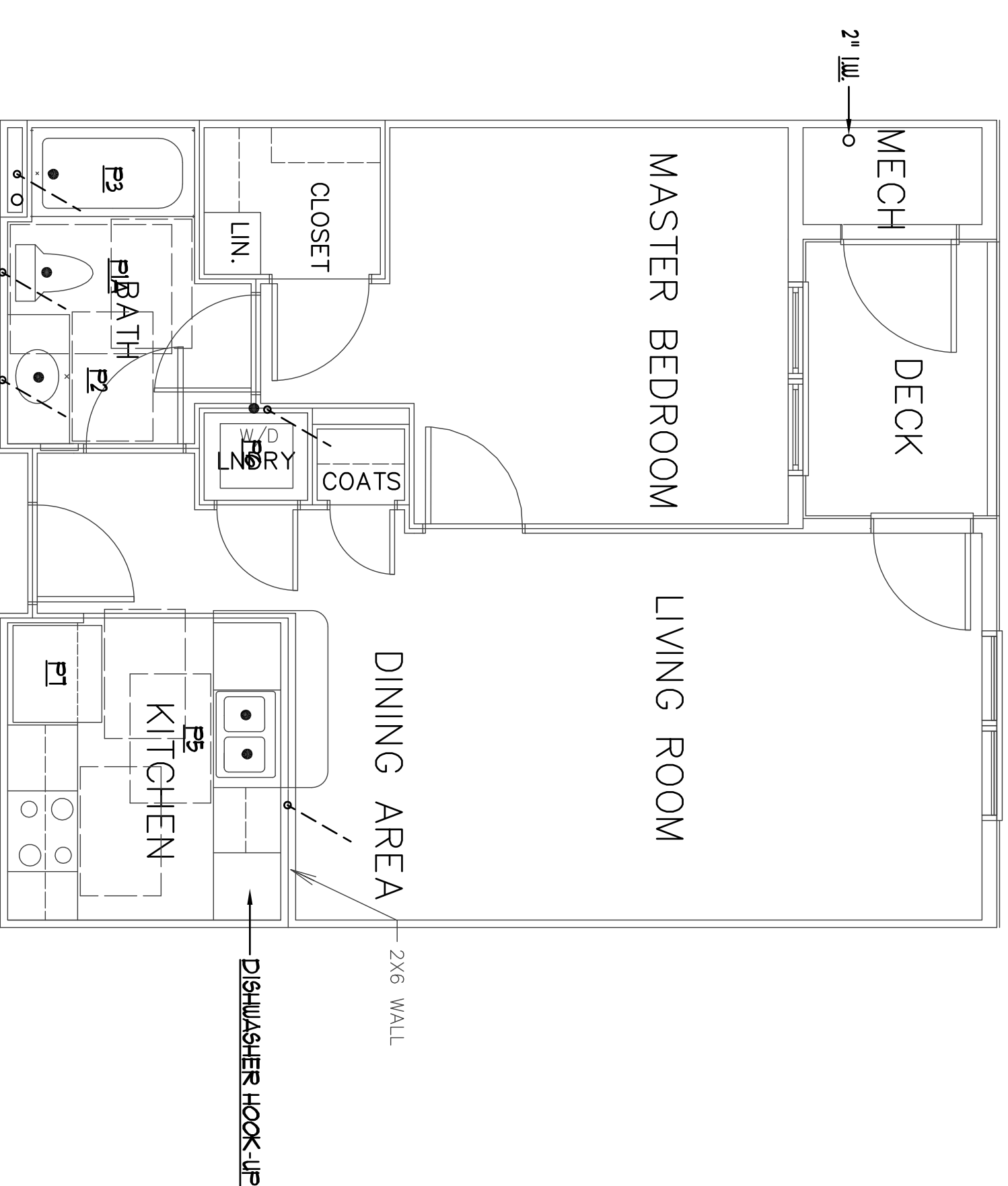


UNIT TYPE C  
SCALE: 1/4" = 1' 0"



UNIT TYPE D  
SCALE: 1/4" = 1' 0"

**General Note**  
1. Unit Type D is similar to Unit Type C. See piping layout for Unit Type C for more information.



UNIT TYPE E  
SCALE: 1/4" = 1' 0"

**General Note**  
1. Unit Type E is similar to Unit Type A. See piping layout for Unit Type A for more information.

Revisions  
11/29/2012-INDERS LAB PIPING FOR  
CONSTRUCTION - FOR PERMIT  
12/14/2012 - FOR PERMIT  
1/14/2013 - PLUMBING REVISIONS.  
2/6/2013 - 100% For Review  
and Comment

Bay House  
Portland, ME



**BENNETT  
ENGINEERING**  
MECHANICAL • ELECTRICAL  
(207) 865-9475

Job No.: 3346  
Date: 12/14/12  
Scale: 1/8" = 1'-0" or A.N.  
Drawn by: SF Deel  
Checked by: SF Deel

Drawing Title:  
Unit Plans



Atlantic Comfort  
Systems, Inc.  
Mechanical Contractor • 807-894-4390  
882 Hill Street, Biddeford, ME 04005  
www.atlanticcomfort.com

P.14