

Corey Electric
609 Main Street #3
Westbrook, ME 04092

Bartlett Design
LIGHTING & ELECTRICAL ENGINEERING
942 WASHINGTON STREET, BATH, ME 04500
TEL: (207) 443-3447 FAX: (207) 443-3580

THE VILLAGE AT OCEANGATE, LLC
c/o Atlas Investments Group
35 Fay Street Suite 5-2
Boston, MA 02118

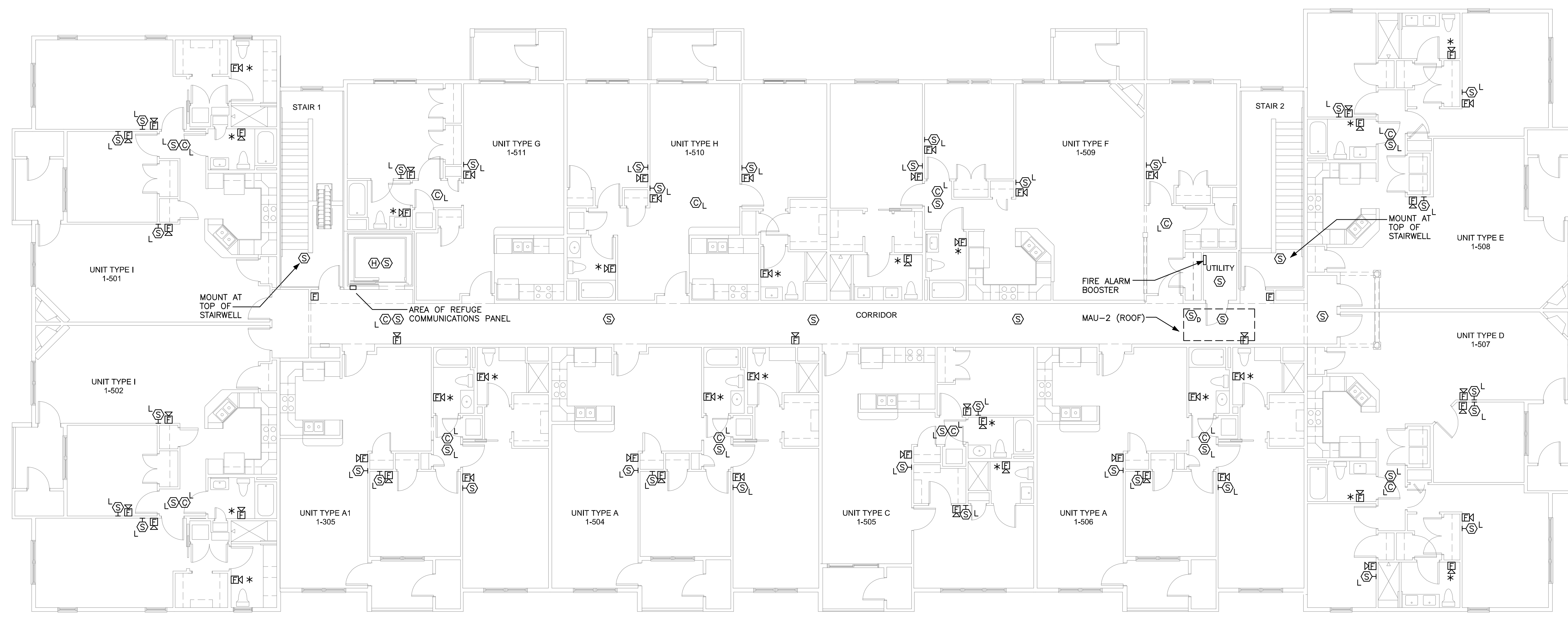
THE BAY HOUSE
Middle Street
Portland, Maine

FIFTH FLOOR PLAN
Building 1
Scale: 1/8" = 1'-0"
Commission No: 11-013
Date: August 1, 2013

REVISIONS:

DRG. NO.

FA1.5



BUILDING 1 – FIFTH FLOOR FIRE ALARM PLAN
1/8" = 1'-0"

- DRAWING FA1.5 NOTES:**
1. CIRCUIT CARBON MONOXIDE DETECTORS IN COMMON AREAS TO CIRCUIT HP4 #34.
 2. COMBINATION HORN/STROBE/SMOKE DETECTORS IN LIVING UNITS SHALL BE PHOTOELECTRIC TYPE.
 3. SMOKE DETECTORS AND CARBON MONOXIDE DETECTORS IN LIVING UNITS SHALL BE CIRCUITED TO THE LOCAL LIGHTING CIRCUIT.
 4. WHERE STROBE CANDELA RATING IS NOT SHOWN AT FIRE ALARM NOTIFICATION DEVICES, STROBE RATING SHALL BE 15cd.
 5. SPRINKLER ENTRANCE TO BE LOCATED IN MECHANICAL ROOM. PROVIDE TAMPER AND FLOW SWITCHES AS REQUIRED BY CODE.