

Corey Electric  
609 Main Street #3  
Westbrook, ME 04092

**Bartlett Design**  
LIGHTING & ELECTRICAL ENGINEERING  
942 WASHINGTON STREET, BATH, ME 04500  
TEL: (207) 443-3447 FAX: (207) 443-3580

THE VILLAGE AT OCEANGATE, LLC  
c/o Atlas Investments Group  
35 Fay Street Suite 5-2  
Boston, MA 02118

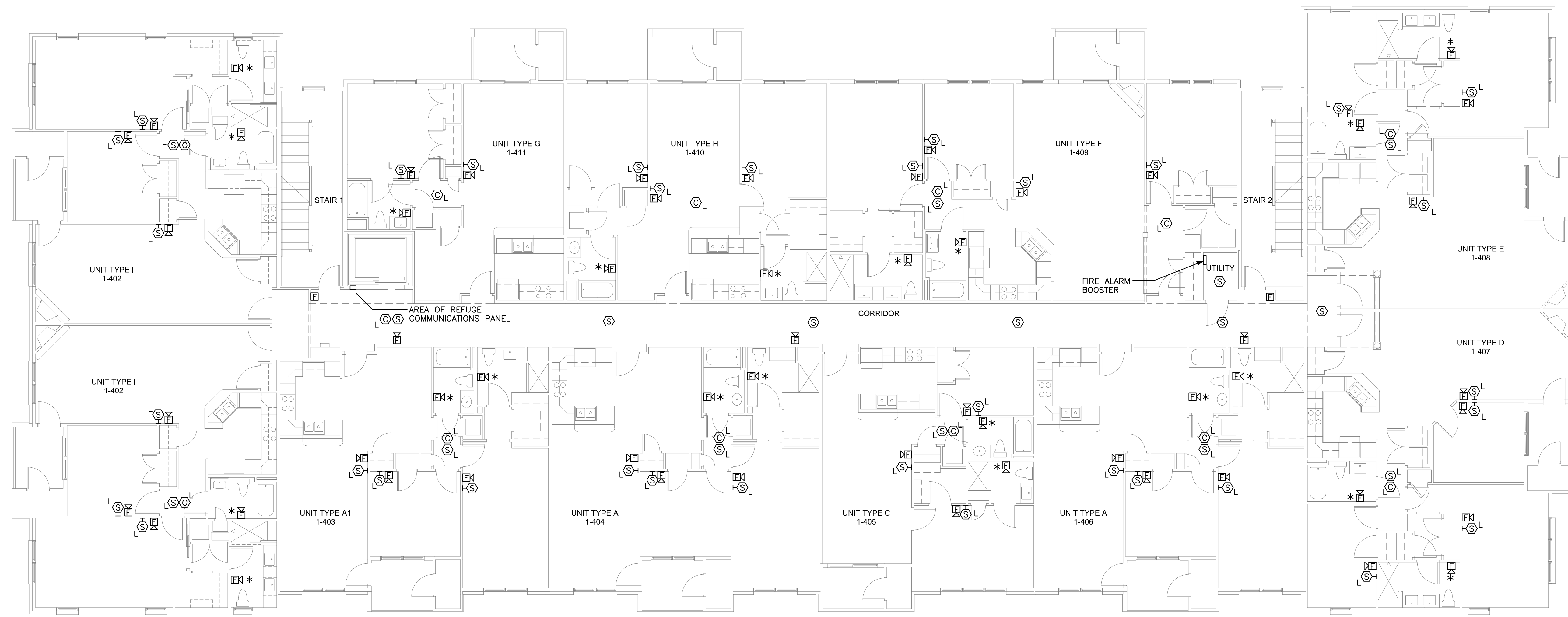
THE BAY HOUSE  
Middle Street  
Portland, Maine

FOURTH FLOOR PLAN  
Building 1  
Scale: 1/8" = 1'-0"  
Commission No: 11-013  
Date: August 1, 2013

REVISIONS:

DRG. NO.

FA1.4



**BUILDING 1 – FOURTH FLOOR FIRE ALARM PLAN**  
1/8" = 1'-0"

- DRAWING FA1.4 NOTES:**
1. CIRCUIT CARBON MONOXIDE DETECTORS IN COMMON AREAS TO CIRCUIT HP4 #34.
  2. COMBINATION HORN/STROBE/SMOKE DETECTORS IN LIVING UNITS SHALL BE PHOTOELECTRIC TYPE.
  3. SMOKE DETECTORS AND CARBON MONOXIDE DETECTORS IN LIVING UNITS SHALL BE CIRCUITED TO THE LOCAL LIGHTING CIRCUIT.
  4. WHERE STROBE CANDELA RATING IS NOT SHOWN AT FIRE ALARM NOTIFICATION DEVICES, STROBE RATING SHALL BE 15cd.
  5. SPRINKLER ENTRANCE TO BE LOCATED IN MECHANICAL ROOM. PROVIDE TAMPER AND FLOW SWITCHES AS REQUIRED BY CODE.