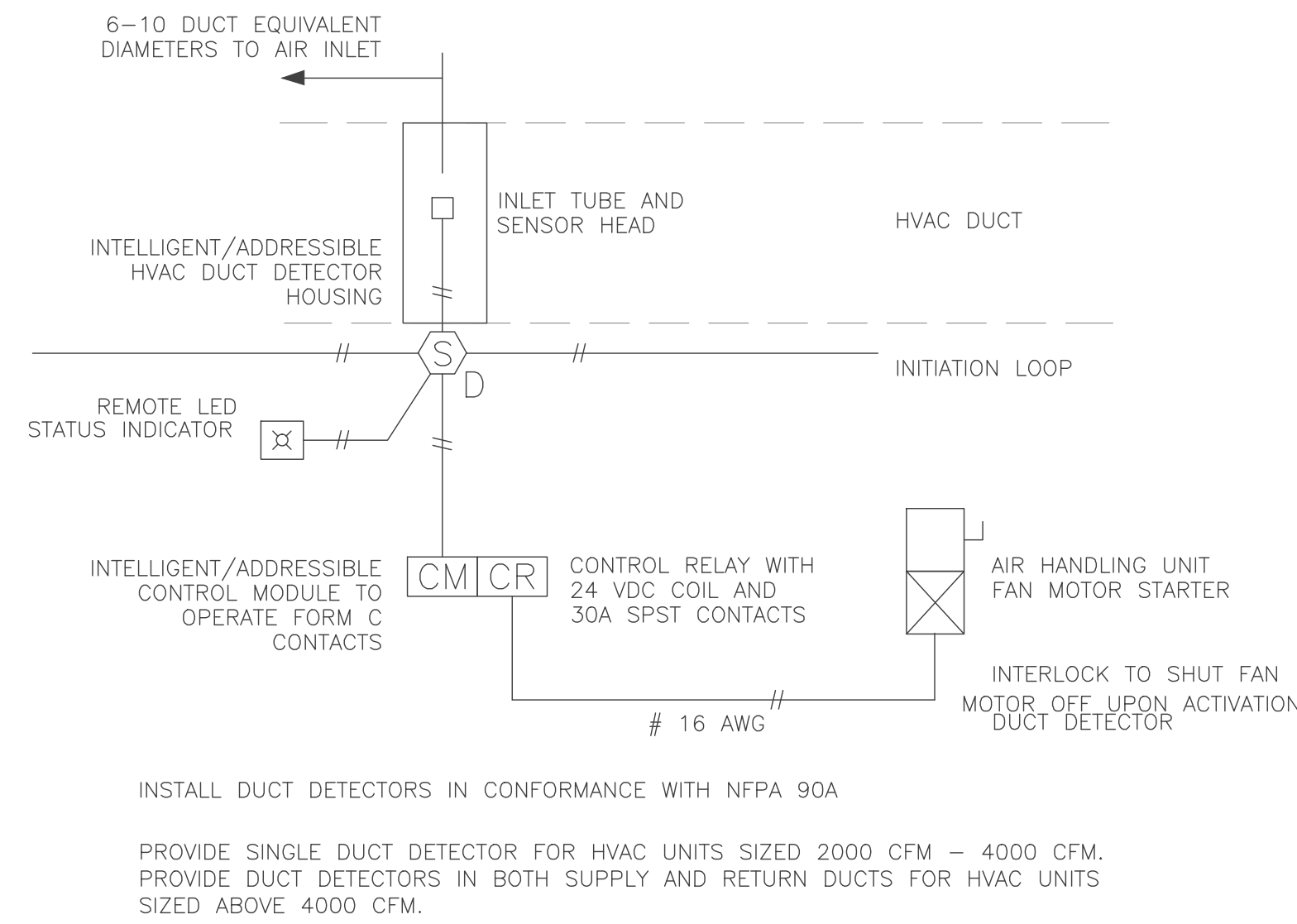


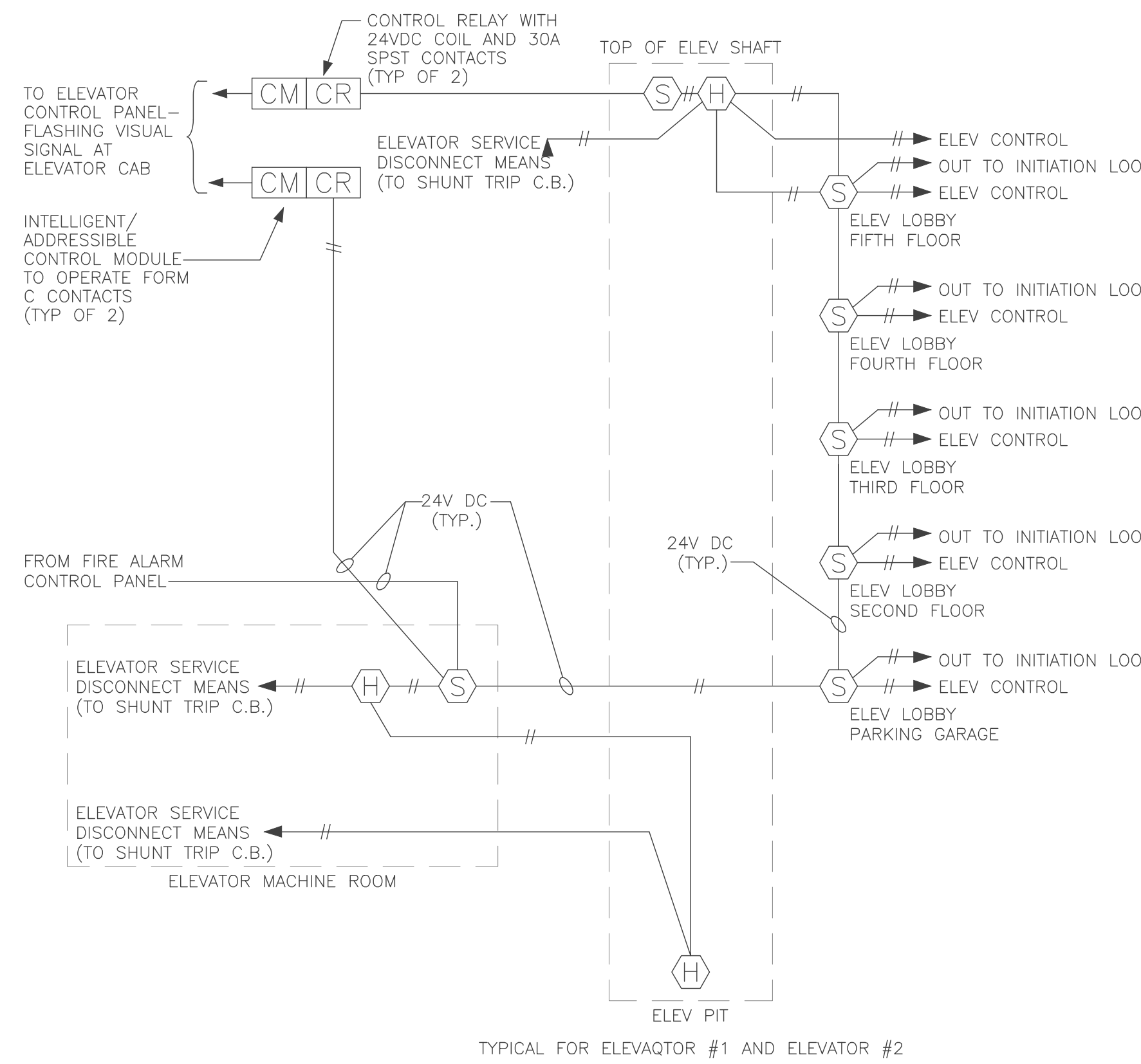
**ELECTRICAL SYMBOLS**

SYMBOL	DESCRIPTION
	FIRE ALARM CEILING MOUNTED SMOKE DETECTOR L = Indicates Localized Detector D = Duct Mounted Detector
	FIRE ALARM SMOKE DETECTOR Indicates Localized Detector
	FIRE ALARM AUDIO VISUAL Indicates Visual Only, No Horn Candela Rating (15cd unless noted otherwise)
	FIRE ALARM WALL MOUNTED SMOKE DETECTOR L = Indicates Localized Detector
	FIRE ALARM PULL STATION
	FIRE ALARM HEAT DETECTOR
	FIRE ALARM TAMPER SWITCH
	FIRE ALARM FLOW SWITCH
	FIRE ALARM KNOX BOX
	CONTROL PANEL See Drawings for Details



**HVAC FIRE ALARM INTERFACE WIRING DIAGRAM**

NOT TO SCALE



**ELEVATOR FIRE ALARM INTERFACE WIRING DIAGRAM NOTES:**

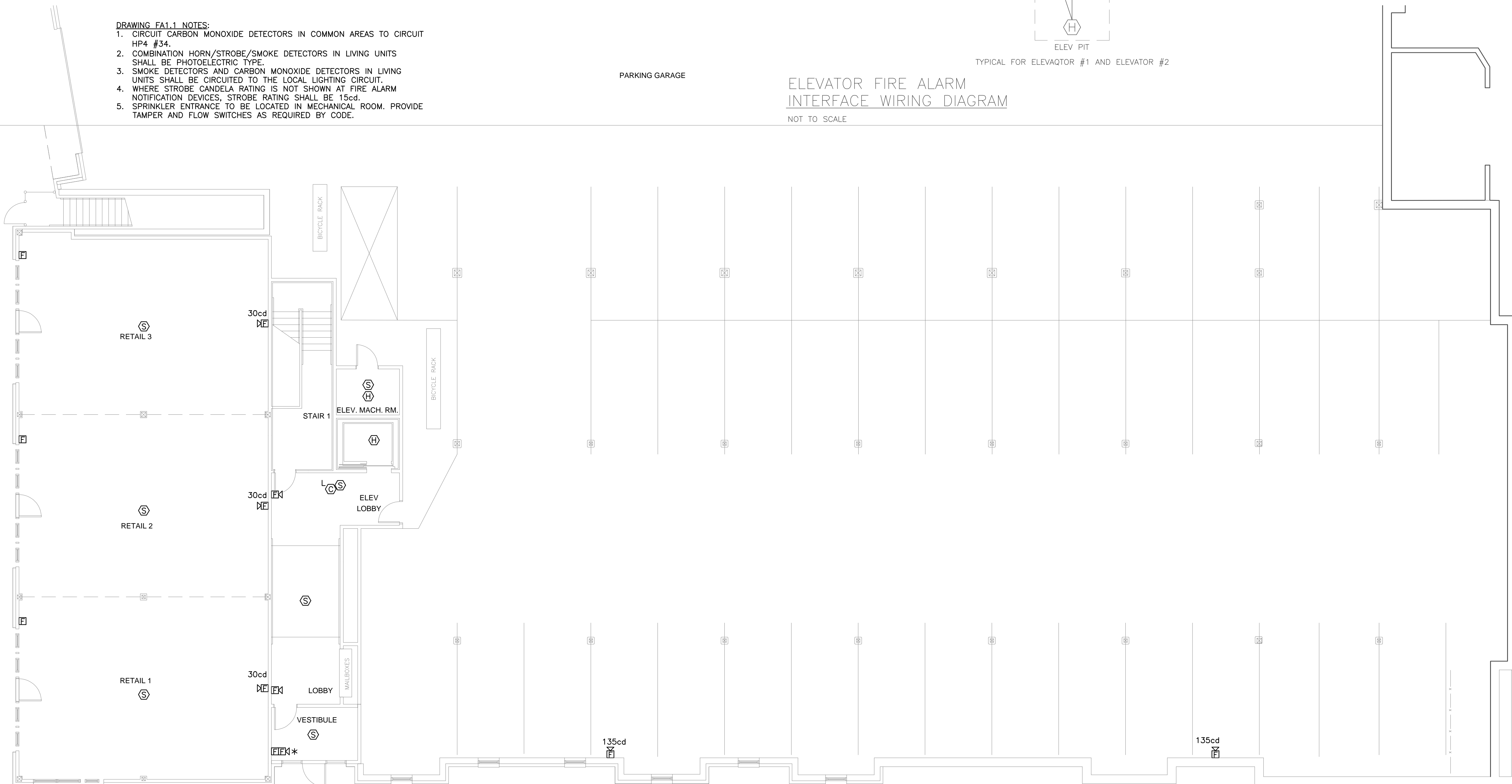
1. AUTOMATIC HEAT DETECTORS SHOWN FOR AUTOMATIC DISCONNECT OF ELEVATOR SERVICE BY MEANS OF SHUNT TRIP C.B. ARE REQUIRED ONLY WHEN FACILITY IS SPRINKLERED.
2. FOR SPRINKLERED FACILITIES, WHEN A SPRINKLER HEAD IS LOCATED IN THE ELEVATOR SHAFT WITHIN 24" OF THE PIT FLOOR, THE AUTOMATIC HEAT DETECTOR AT THE ELEVATOR PIT FOR ELEVATOR SERVICE DISCONNECT IS NOT REQUIRED. FOR SPRINKLERED FACILITIES WHERE NO SPRINKLER HEADS ARE INSTALLED IN THE ELEVATOR SHAFT, NEITHER THE AUTOMATIC HEAT DETECTOR AT THE TOP OF THE ELEVATOR SHAFT FOR ELEVATOR DISCONNECT, NOR THE AUTOMATIC SMOKE DETECTOR AT THE TOP OF THE ELEVATOR ARE REQUIRED.
3. FOR SPRINKLERED FACILITIES WHERE NO SPRINKLER HEADS ARE INSTALLED IN THE ELEVATOR SHAFT, NEITHER THE AUTOMATIC HEAT DETECTOR AT THE TOP OF THE ELEVATOR SHAFT FOR ELEVATOR DISCONNECT, NOR THE AUTOMATIC SMOKE DETECTOR AT THE TOP OF THE ELEVATOR ARE REQUIRED.
4. ADJUST QUANTITY OF SMOKE DETECTORS AND INITIATION LOOPS AS NECESSARY TO ACCOMMODATE ALL ELEVATOR STOPS.
5. ELEVATOR SMOKE FAN SHALL BE WIRED TO START UPON ACTIVATION OF ANY ELEVATOR LOBBY SMOKE DETECTOR AN ALARM CONDITION AT THE FIRE ALARM CONTROL PANEL, OR BY ACTIVATION OF THE FLOW SWITCH AT THE SPRINKLER MAIN. PROVIDE A RECESSED KEY SWITCH AT MAIN VESTIBULE FOR THE FIRE DEPARTMENT CONTROL OF ELEVATOR SMOKE FAN (SWITCH TO MANUALLY START/STOP FAN). COORDINATE ALL REQUIREMENTS WITH SPECIFICATION SECTION 15600.
6. INSTALL DETECTORS AND WIRING IN CONFORMANCE WITH STATE ELEVATOR CODE.

**ELEVATOR FIRE ALARM INTERFACE WIRING DIAGRAM**

NOT TO SCALE

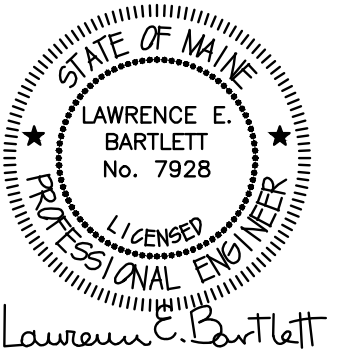
**DRAWING FA1.1 NOTES:**

1. CIRCUIT CARBON MONOXIDE DETECTORS IN COMMON AREAS TO CIRCUIT HP4 #34.
2. COMBINATION HORN/STROBE/SMOKE DETECTORS IN LIVING UNITS SHALL BE PHOTOELECTRIC TYPE.
3. SMOKE DETECTORS AND CARBON MONOXIDE DETECTORS IN LIVING UNITS SHALL BE CIRCUITED TO THE LOCAL LIGHTING CIRCUIT.
4. WHERE STROBE CANDELA RATING IS NOT SHOWN AT FIRE ALARM NOTIFICATION DEVICES, STROBE RATING SHALL BE 15cd.
5. SPRINKLER ENTRANCE TO BE LOCATED IN MECHANICAL ROOM. PROVIDE TAMPER AND FLOW SWITCHES AS REQUIRED BY CODE.



**BUILDING 1 - FIRST FLOOR FIRE ALARM PLAN**

1/8" = 1'-0"



Lawrence E. Bartlett

Corey Electric  
609 Main Street #3  
Westbrook, ME 04092

**Bartlett Design**  
LIGHTING & ELECTRICAL ENGINEERING  
342 WASHINGTON STREET, BATH, ME 04530  
TEL: (207) 443-3447 FAX: (207) 443-5680

THE VILLAGE AT OCCANGATE, LLC  
c/o Atlas Investments Group  
35 Fay Street Suite 5-2  
Boston, MA 02118

THE BAY HOUSE  
Middle Street  
Portland, Maine

FIRST FLOOR PLAN  
Building 1  
Scale: 1/8" = 1'-0"  
Commission No: 11-013  
Date: August 1, 2013

REVISIONS:

DRG. NO.

FA1.5