

**Corey Electric**  
609 Main Street #3  
Westbrook, ME 04092

**Bartlett Design**  
LIGHTING & ELECTRICAL ENGINEERING  
342 WASHINGTON STREET, BATH, ME 04500  
TEL: (207) 443-3447 FAX: (207) 443-3580

**THE VILLAGE AT OCEANGATE, LLC**  
c/o Atlas Investments Group  
35 Fay Street Suite 5-2  
Boston, MA 02118

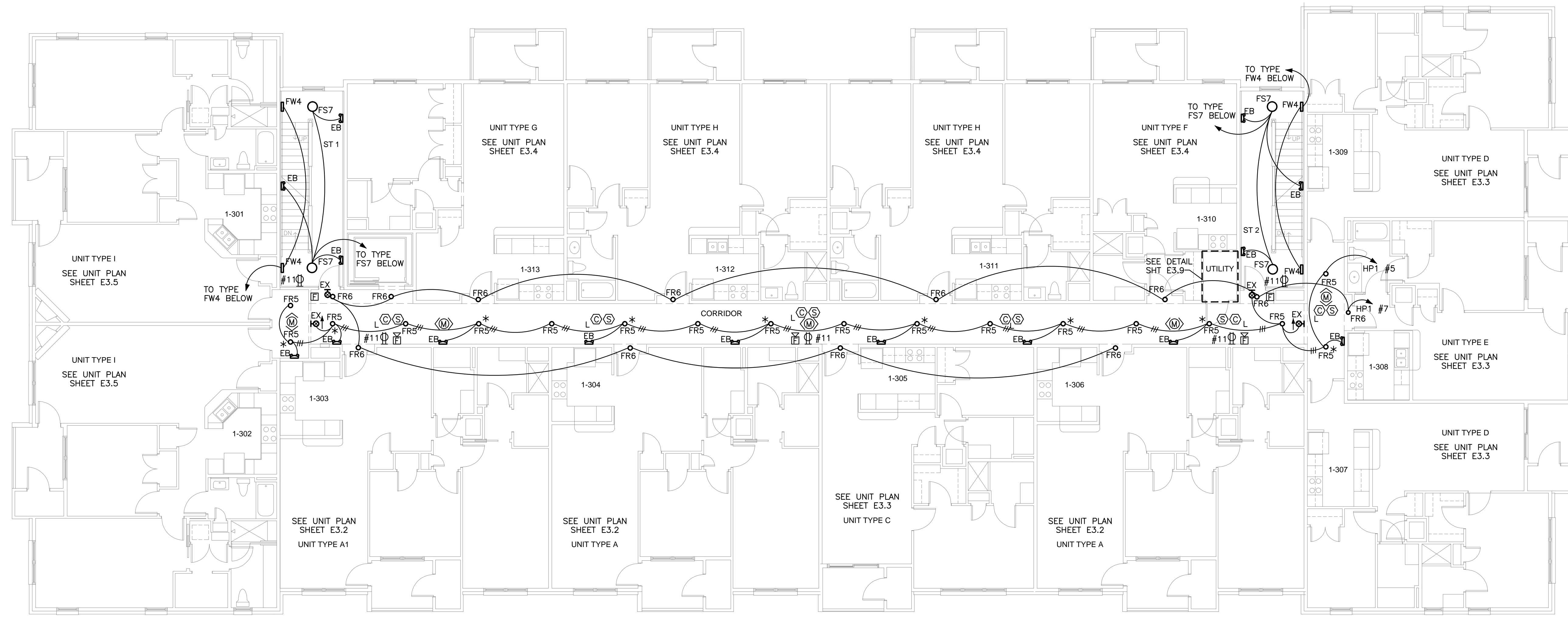
**THE BAY HOUSE**  
Middle Street  
Portland, Maine

**THIRD FLOOR PLAN**  
Building 1  
Scale: 1/8" = 1'-0"  
Commission No: 11-013  
Date: November 29, 2012

REVISIONS:

DRG. NO.

E1.3



**BUILDING 1 – THIRD FLOOR PLAN**  
1/8" = 1'-0"

- DRAWING E1.3 NOTES:**
1. VERIFY THE EXACT LOCATION OF ALL MECHANICAL EQUIPMENT PRIOR TO INSTALLATION.
  2. UNLESS SPECIFICALLY NOTED OTHERWISE, ALL DISCONNECT SWITCH SIZES SHALL BE 30A/3P.
  3. UNLESS SPECIFICALLY NOTED OTHERWISE, THE WIRE SIZE FOR ALL 3-PHASE MOTORS SHALL BE 3 #12, 1 #12GND, IN A 3/4" CDT.
  4. UNLESS SPECIFICALLY NOTED OTHERWISE ALL CIRCUIT DESIGNATIONS REFER TO PANEL HP1.
  5. BUILDING MOUNTED LIGHTS ARE TO BE CONTROLLED BY A PHOTOCELL THAT SHALL BE MOUNTED ON THE NORTH SIDE OF THE BUILDING.
  6. CIRCUIT CARBON MONOXIDE DETECTORS TO TWO CIRCUITS ON PANEL HP1 #25 AND #27.
  7. WHERE INDICATED BY \*, TYPE FR5 LIGHTS TO OPERATE CONTINUOUSLY. OTHER TYPE FR5 LIGHTS SHALL BE CONTROLLED BY MOTION SENSOR. TYPE FR6 LIGHTS SHALL OPERATE CONTINUOUSLY.
  8. PROVIDE CEILING MOUNTED, LINE VOLTAGE MOTION SENSORS IN CORRIDORS TO CONTROL TYPE FR5 LIGHTS AS INDICATED ABOVE. MOTION SENSORS SHALL BE HUBBELL BUILDING AUTOMATION #C500200P, OR EQUAL.