

Corey Electric
609 Main Street #3
Westbrook, ME 04092

Bartlett Design
LIGHTING & ELECTRICAL ENGINEERING
942 WASHINGTON STREET, PORTLAND, ME 04103
TEL: (207) 443-3447 FAX: (207) 443-3580

THE VILLAGE AT OCEANGATE, LLC
c/o Atlas Investments Group
35 Fay Street Suite 5-2
Boston, MA 02118

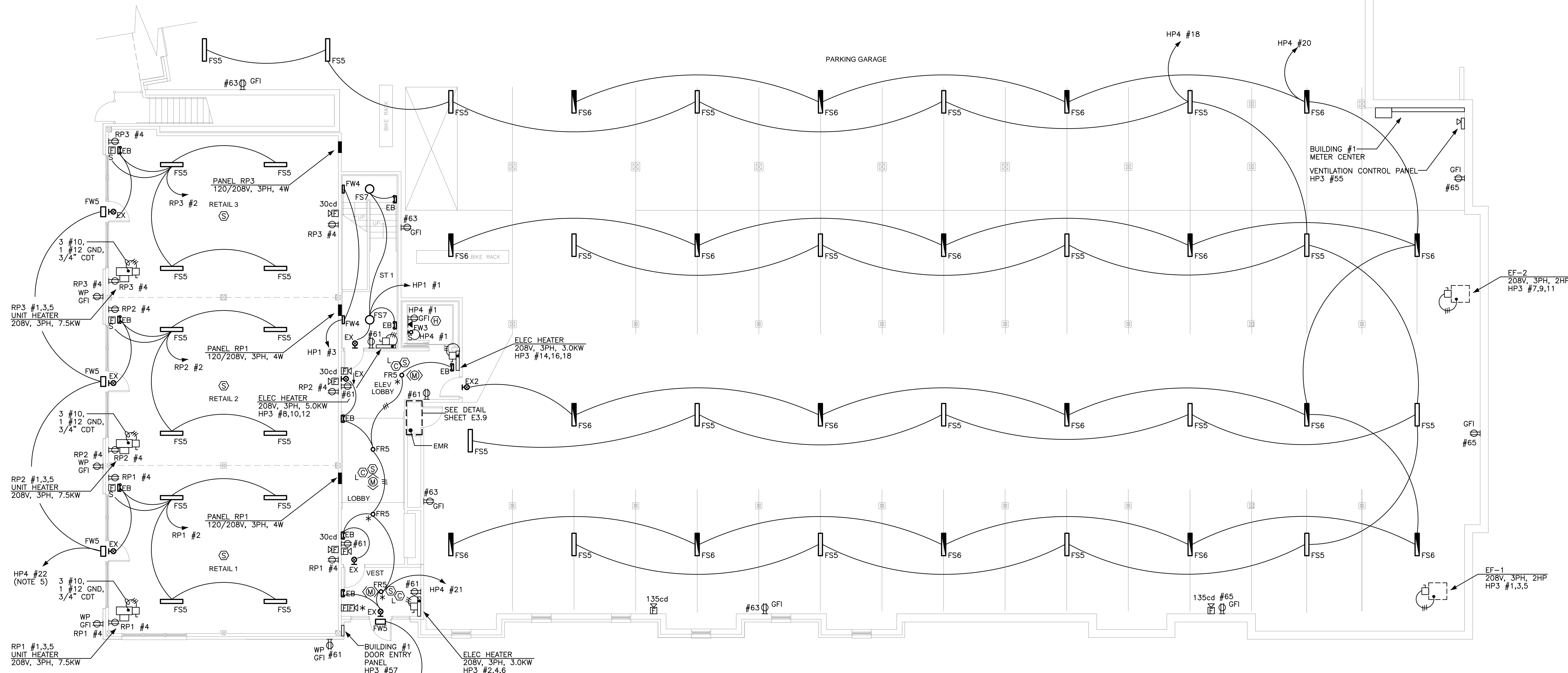
THE BAY HOUSE
Middle Street
Portland, Maine

FIRST FLOOR PLAN
Building 1
Scale: 1/8" = 1'-0"
Commission No: 11-013
Date: November 29, 2012

REVISIONS:

DRG. NO.

E1.1



BUILDING 1 - FIRST FLOOR PLAN
1/8" = 1'-0"

- DRAWING E1.1 NOTES:**
1. VERIFY THE EXACT LOCATION OF ALL MECHANICAL EQUIPMENT PRIOR TO INSTALLATION.
 2. UNLESS SPECIFICALLY NOTED OTHERWISE ALL DISCONNECT SWITCH SIZES SHALL BE 30A/3P.
 3. UNLESS SPECIFICALLY NOTED OTHERWISE, THE WIRE SIZE FOR ALL 3-PHASE MOTORS SHALL BE 3 #12, 1 #12GND, IN A 3/4" CDT.
 4. UNLESS SPECIFICALLY NOTED OTHERWISE ALL CIRCUIT DESIGNATIONS REFER TO PANEL HP3.
 5. BUILDING MOUNTED LIGHTS ARE TO BE CONTROLLED BY A PHOTOCELL THAT SHALL BE MOUNTED ON THE NORTH SIDE OF THE BUILDING.
 6. CIRCUIT CARBON MONOXIDE DETECTORS IN THE PARKING GARAGE TO PANEL HP3 #51.
 7. PROVIDE A MANUAL MOTOR STARTER FOR THE SUMP PUMP LOCATED IN ELEVATOR #1. CIRCUIT PUMP TO PANEL HP4 #32.
 8. WHERE INDICATED BY * , TYPE FR5 LIGHTS TO OPERATE CONTINUOUSLY. OTHER TYPE FR5 LIGHTS SHALL BE CONTROLLED BY MOTION SENSOR. TYPE FR6 LIGHTS SHALL OPERATE CONTINUOUSLY.
 9. PROVIDE CEILING MOUNTED, LINE VOLTAGE, MOTION SENSORS IN CORRIDORS TO CONTROL TYPE FR5 LIGHTS AS INDICATED ABOVE. MOTION SENSORS SHALL BE HUBBELL BUILDING AUTOMATION #C5002000P, OR EQUAL.