

DESIGN AREA NUMBER 1-5-A

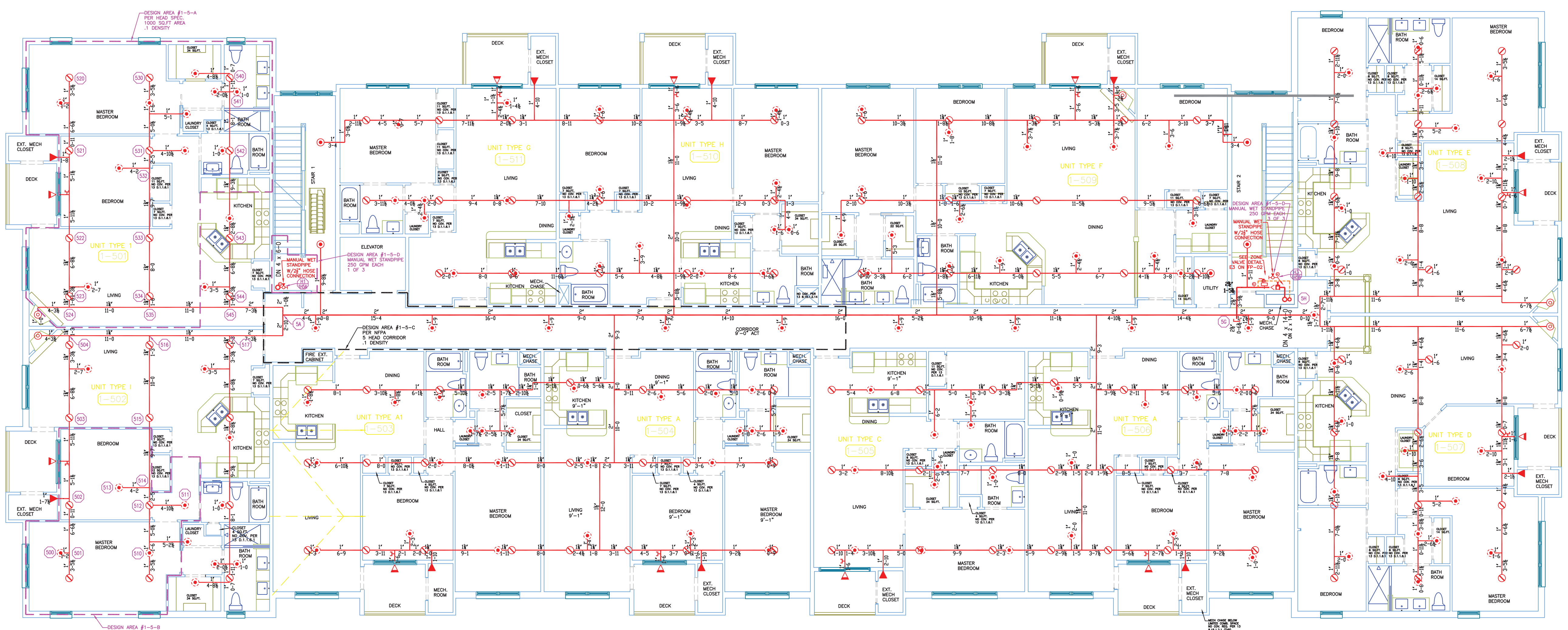
HYDRAULIC DESIGN CRITERIA
 LOCATION= UNIT 501 ABOVE CEILING
 TYPE OF SYSTEM= NFPA 13 WET
 AREA OF OPERATION= 1000-SQ.FT.
 NUMBER OF SPRINKLERS= 10
 DENSITY= 1.5 GPM/ SQ.FT.
 HAZARD CLASS= ORDINARY HAZARD GROUP 2
 HEAD SPACING= 144 SQ.FT.
 SYSTEM DEMAND INCLUDING HOSE @
 BASE OF RISER= 200-GPM @ 85-PSI
 SAFETY MARGIN= 8-PSI

DESIGN AREA NUMBER 1-5-B

HYDRAULIC DESIGN CRITERIA
 LOCATION= UNIT 502 BELOW CEILING
 TYPE OF SYSTEM= NFPA 13 WET
 AREA OF OPERATION= 4-HEAD
 NUMBER OF SPRINKLERS= 4
 DENSITY= 1.5 GPM/ SQ.FT.
 HAZARD CLASS= LIGHT HAZARD
 HEAD SPACING= 256 SQ.FT.
 SYSTEM DEMAND INCLUDING HOSE @
 BASE OF RISER= 200-GPM @ 85-PSI
 SAFETY MARGIN= 14-PSI

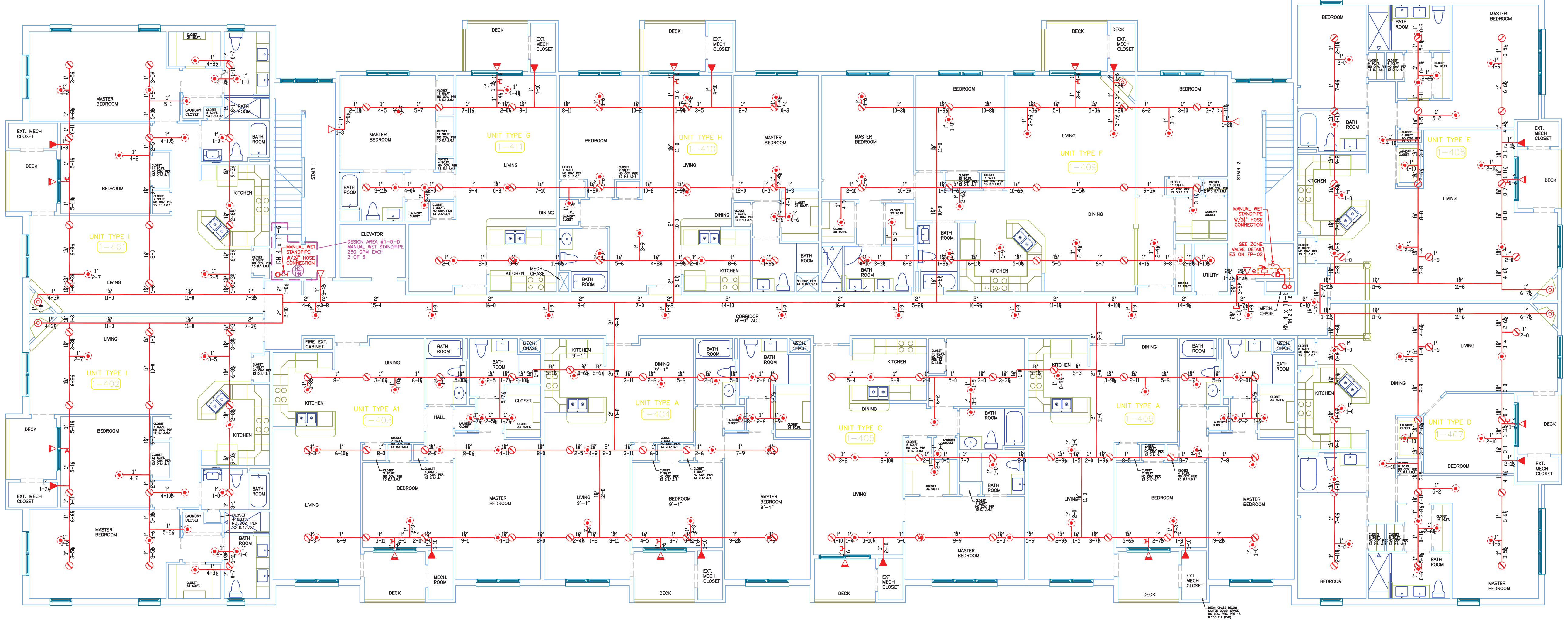
DESIGN AREA NUMBER 1-5-D

HYDRAULIC DESIGN CRITERIA
 LOCATION= MANUAL WET SPRINKLER STAIR 1
 TYPE OF SYSTEM= NFPA 14 MANUAL WET
 AREA OF OPERATION= 3-HOSE-VALVES
 SUPPLY= 100 PSI @ 250 GPM
 SYSTEM DEMAND INCLUDING HOSE @
 BASE OF RISER= 750-GPM @ 160-PSI
 SAFETY MARGIN= 6-PSI



ALL PIPING 2" AND SMALLER ON THIS FLOOR IS CPVC

1.5 5TH FLOOR BUILDING 1 (WET ZONE 1-5)
 TOTAL PROTECTED AREA 16,000 SQ.FT.
 SCALE 1/8" = 1'-0"



ALL PIPING 2" AND SMALLER ON THIS FLOOR IS CPVC

1.4 4TH FLOOR BUILDING 1 (WET ZONE 1-4)
 TOTAL PROTECTED AREA 16,000 SQ.FT.
 SCALE 1/8" = 1'-0"

NOTES FOR NFPA 13 2010ed. SYSTEM

- SPRINKLERS SHALL BE INSTALLED IN ALL AREAS.
- (13) 3.3.17 SMALL ROOMS
 A ROOM OF LIGHT HAZARD OCCUPANCY CLASSIFICATION HAVING UNRESTRICTED CONSTRUCTION AND FLOOR AREAS NOT EXCEEDING 800 SQ FT THAT ARE ENCLOSED BY WALLS AND A CEILING ARE PERMITTED TO HAVE A HEAD SPACED 9' OFF ONE WALL.
- (13) 8.2.1 SYSTEM PROTECTION AREA
 THE MAXIMUM FLOOR AREA ON ANY ONE FLOOR TO BE PROTECTED BY SPRINKLERS SUPPLIED BY ANY ONE SPRINKLER SYSTEM SHALL NOT EXCEED 52,000 SQ. FT. FOR A LIGHT HAZARD OR ORDINARY HAZARD AREA.
- (13) 8.15.10.3 ELECTRICAL EQUIPMENT ROOM OMISSION
 SPRINKLERS SHALL NOT BE REQUIRED IN ELECTRICAL EQUIPMENT ROOMS WHERE ALL OF THE FOLLOWING CONDITIONS ARE MET:
 (1) THE ROOM IS DEDICATED TO ELECTRICAL EQUIPMENT ONLY.
 (2) ONLY DRY-TYPE ELECTRICAL EQUIPMENT IS USED.
 (3) EQUIPMENT IS INSTALLED IN A ZONED FIRE RATED ENCLOSURE INCLUDING PROTECTION FOR PENETRATIONS.
 (4) NO COMB. STORAGE IS PERMITTED TO BE STORED IN THE ROOM.
- (13) 8.15.5 ELEVATOR HOIST WAYS
 SIDEWALL SPRAY SPRINKLERS SHALL BE INSTALLED AT THE BOTTOM OF EACH ELEVATOR HOIST WAY NOT MORE THAN 18" ABOVE THE FLOOR-FT.
- (13) 8.15.12.1.1 SPRINKLERS SHALL NOT BE REQUIRED IN A CONCEALED SPACE EVEN WITH A SMALL OPENING SUCH AS THOSE USED AS RETURN AIR FOR A FLENUM.
- (13) 8.15.12.1.4 SPRINKLERS SHALL NOT BE REQUIRED IN MULTIFLOOR BUILDINGS WHERE THE CHASES ARE FIRESTOPPED AT EACH FLOOR USING MATERIALS EQUIVALENT TO THE FLOOR CONSTRUCTION AND WHERE SUCH PIPE CHASES SHALL CONTAIN NO SOURCES OF IGNITION. PIPING SHALL BE WATER FILLED OR NONCOMBUSTIBLE AND PIPE PENETRATIONS AT EACH FLOOR SHALL BE PROPERLY SEALED.
- (13) D.1.16.1 SPRINKLERS SHALL NOT BE REQUIRED IN CLOTHES CLOSETS, LINEN CLOSETS, AND PANTRIES WITHIN THE DWELLING UNITS WHEN THE AREA OF THE SPACE DOES NOT EXCEED 12 FT SQ.

HIGH TECH FIRE PROTECTION
 P.O. BOX 156
 MINOT, ME. 04258-0258
 TEL: (207) 998-2551 FAX: (207) 998-4187
 MAINE LICENSE # 102

GENERAL CONTRACTOR ON RECORD:
 METRIC CORPORATION 55 HENSHAW STREET BOSTON, MA 02135

SPECIAL APPLICATIONS:
 DRY SYSTEM IN ACCORDANCE WITH STATE OF MAINE DRY PIPE POLICY 1/2" PITCH PER 10' ON MAINS AND SPRINKLER LINES.

- LEGEND:**
- R/W/DN PIPE RISER UP OR DOWN
 - AUXILIARY DRAIN
 - PROPOSED WET PIPE
 - PROPOSED DRY PIPE
 - PROPOSED DRAIN PIPE
 - SYSTEM RISER
 - HYDRAULIC CALC. POINT

DESIGN & SYSTEM NOTES:
 ALL PIPING 1/2" & LARGER TO BE SCHEDULE 10 WITH GROOVED DUCTILE IRON FITTING U.L.C.O.
 ALL PIPING 1/4" & SMALLER TO BE SCHEDULE 40 WITH APPROPRIATE FITTING U.L.C.O.
 POSITION, LOCATION, SPACING, AND USE OF SPRINKLERS SHALL BE IN ACCORDANCE WITH NFPA 13.
 POSITION, LOCATION, SPACING, AND USE OF HANGERS SHALL BE IN ACCORDANCE WITH NFPA 13.
 HYDRAULIC CALCULATION PROCEDURES HAVE BEEN DONE IN ACCORDANCE WITH NFPA 13. (SEE PLANS FOR LOCATION OF REMOTE AREAS, HYDRAULIC REFERENCE POINTS, AND SYSTEM DEMANDS.)
 HIGH TECH FIRE PROTECTION IS TO BEGIN WORK AT 6" UNDERGROUND INSIDE OF BUILDING.
 DIMENSIONS AND LOCATIONS GIVEN FOR SPRINKLER HEADS AND PIPE MAY VARY TO ACCOMMODATE ACTUAL FIELD CONDITIONS.
 OWNER TO PROVIDE ADEQUATE HEAT THROUGHOUT BUILDING TO PROTECT WATER FILLED PIPING AND EQUIPMENT FROM FREEZING TEMPERATURES.
 ONLY TR-SEA TYPE COUPLERS TO BE INSTALLED ON DRY OR PRE-ACTION SYSTEMS.
 OWNER IS RESPONSIBLE TO MAINTAIN THE SPRINKLER SYSTEM IN ACCORDANCE WITH THE LATEST EDITION OF NFPA 25, "INSPECTION, TESTING, & MAINTENANCE OF WATER-BASED FIRE PROTECTION SYSTEMS" AND/OR ALL APPLICABLE FEDERAL, STATE, AND/OR LOCAL LAWS, CODES AND ORDINANCES.
 ALL MECHANICAL, ELECTRICAL AND PLUMBING TRADES TO COORDINATE THEIR WORK WITH SPRINKLER CONTRACTOR.
 ALL ELECTRIC WORK IS TO BE DONE BY OTHERS.

HEAD LEGEND:

- VICTAULIC* MODEL V2704
 10 / 200"
 K=5.6
 1/2" BRASS UPRIGHT ON SPRIG OR LINE DEFLECTORS 1" TO 6" BELOW COMBUSTIBLE MEMBERS
- GLOBE* MODEL GL5610
 298 / 155"
 K=5.6
 1/2" WHITE RESIDENTIAL PENDENT SEMI- RECESSED ESC. SPACING 16" X 16"
- GLOBE* MODEL GL5601
 8 / 155"
 K=5.6
 1/2" WHITE COMMERCIAL PENDENT SEMI- RECESSED ESC. (UTILITY ROOM AND STAIRS)
- VIKING* MODEL VK900
 252 / 175"
 K=4.2
 1/2" BRASS CONCEALED SPACE UPRIGHT
- GLOBE* MODEL GL5626
 26 / 200"
 K=5.6
 1/2" CHROME HORIZONTAL SIDEWALL SEMI RECESSED DEFLECTOR 4" TO 6" BELOW CEILING WITH HEAD CAGE
- GLOBE* MODEL GL5641
 20 / 200"
 K=5.6
 1/2" WHITE DRY HORIZONTAL SIDEWALL 4" TO 6" BELOW CEILING
- GLOBE* MODEL GL5626
 4 / 155"
 K=5.6
 1/2" WHITE HORIZONTAL SIDEWALL SEMI RECESSED DEFLECTOR 4" TO 6" BELOW CEILING

OR APPROVED EQUAL

TOTAL HEADS ON THIS SHEET: 618

SCALE: 1/8" = 1'-0"

REVISIONS:
 NO. DATE: DESCRIPTION

1 4/5/13 UNIT CONSOLIDATION

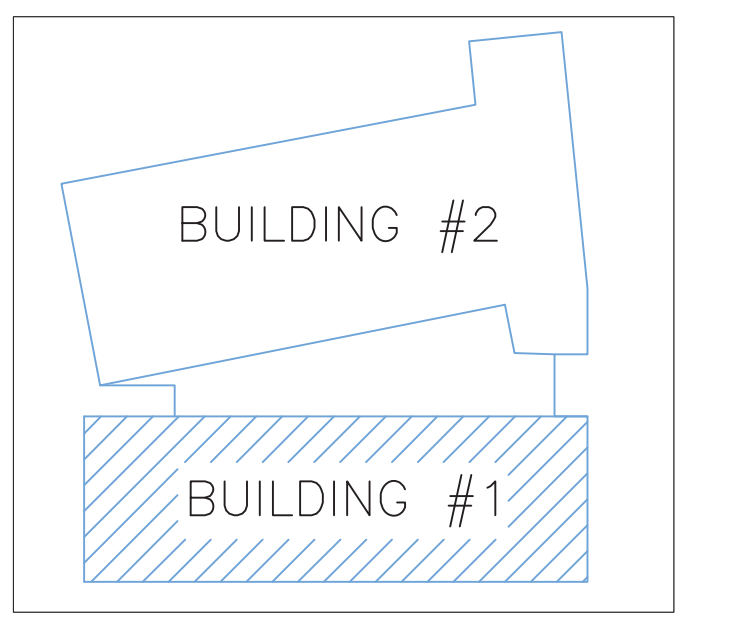
DATE: MARCH 1, 2013
 DESIGNER: ED POULIN (RMS# 515)
 NICET LEVEL: IW CERT # 108534
 CHECKED BY: T. FORTIN / J. FOSS

LOCATION:
 40 MIDDLE STREET
 PORTLAND, ME

DRAWING TITLE:
 THE BAY HOUSE
 BLDG.1 4TH & 5TH FL.
 (WET ZONE 1-4 & 1-5)

FIRE PROTECTION PLAN
 (NFPA 13 2010ed.)

DRAWING NO.:
 FP-04



1.6 KEY PLAN
 SCALE: N.T.S.

