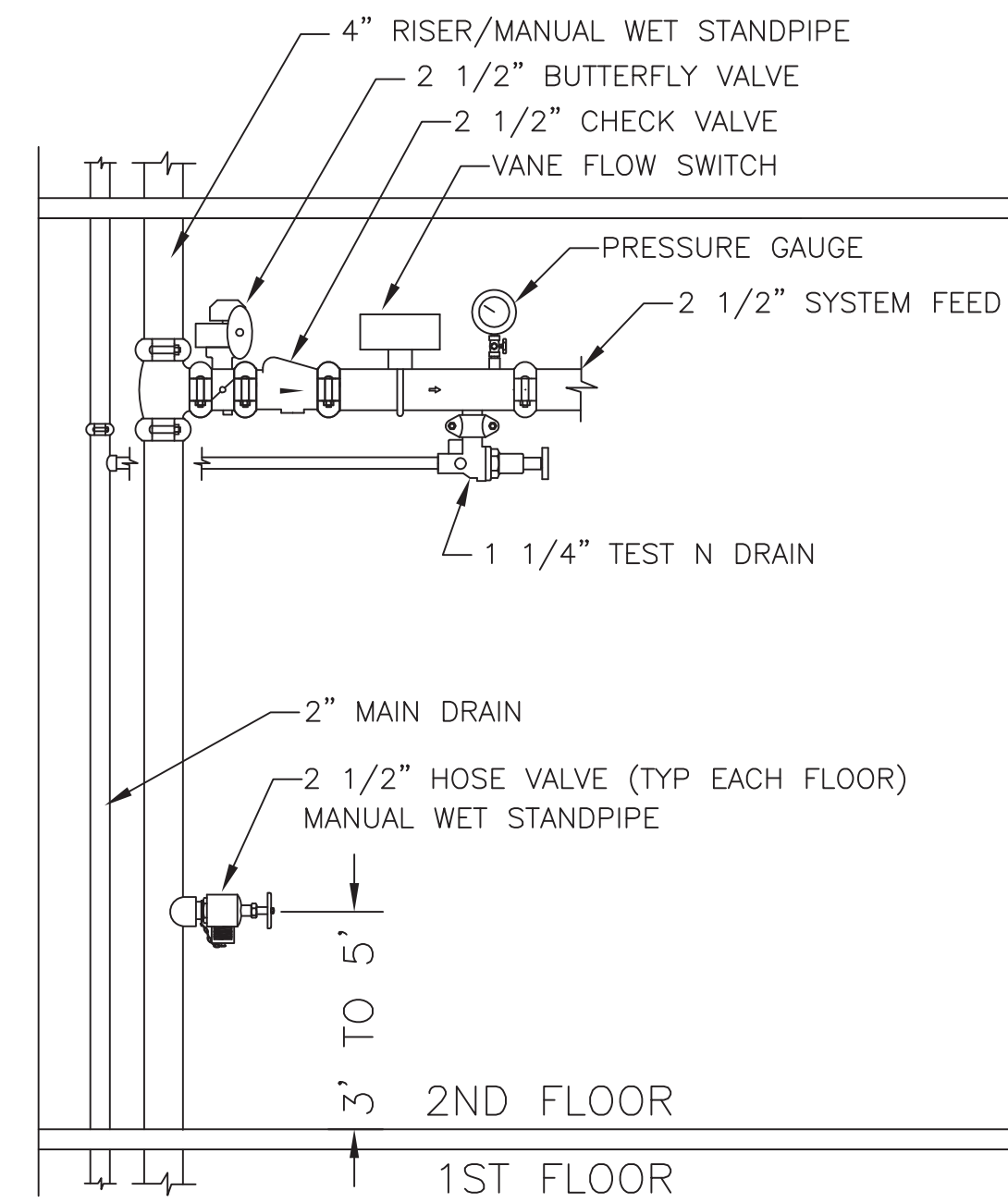
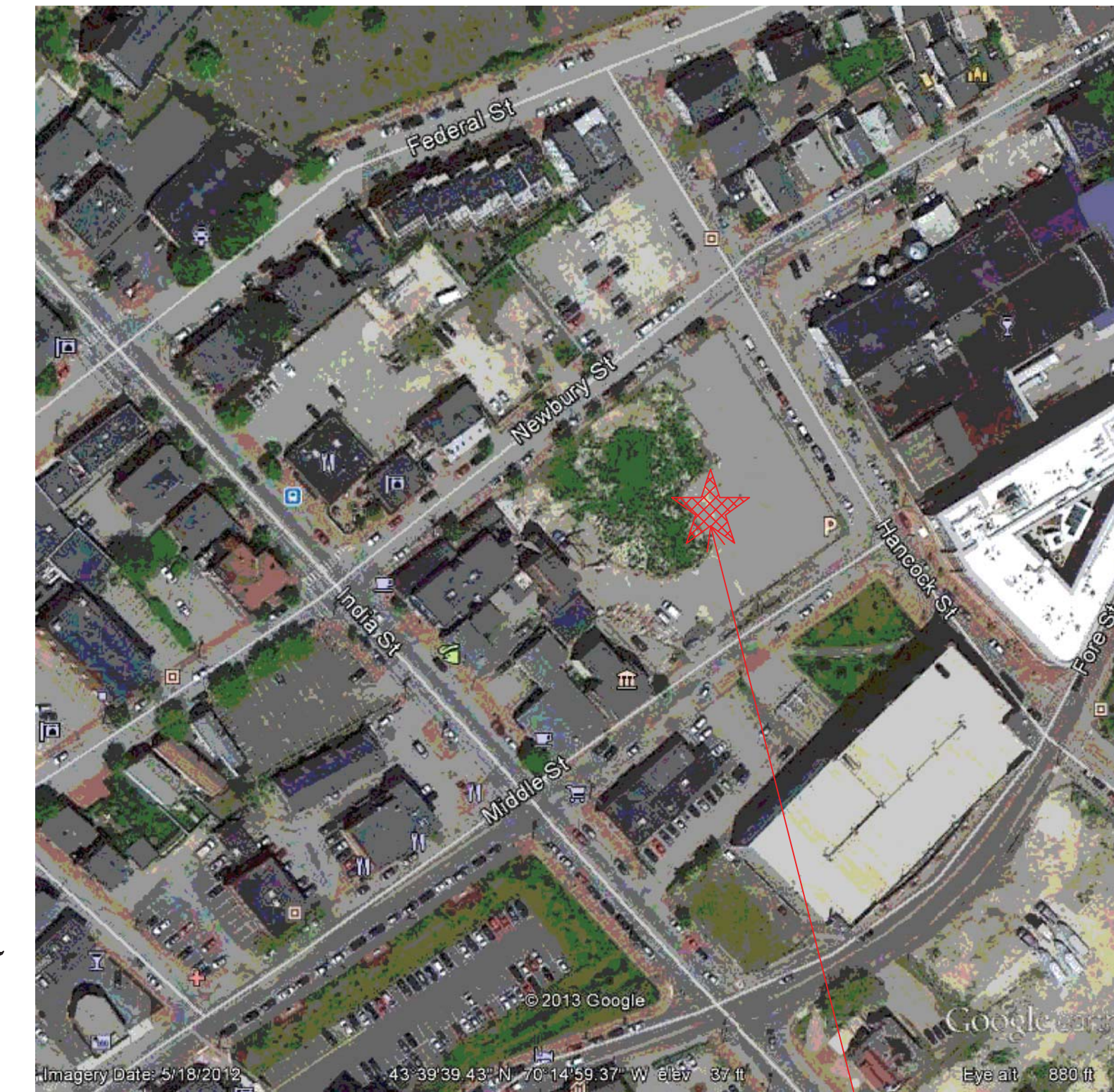


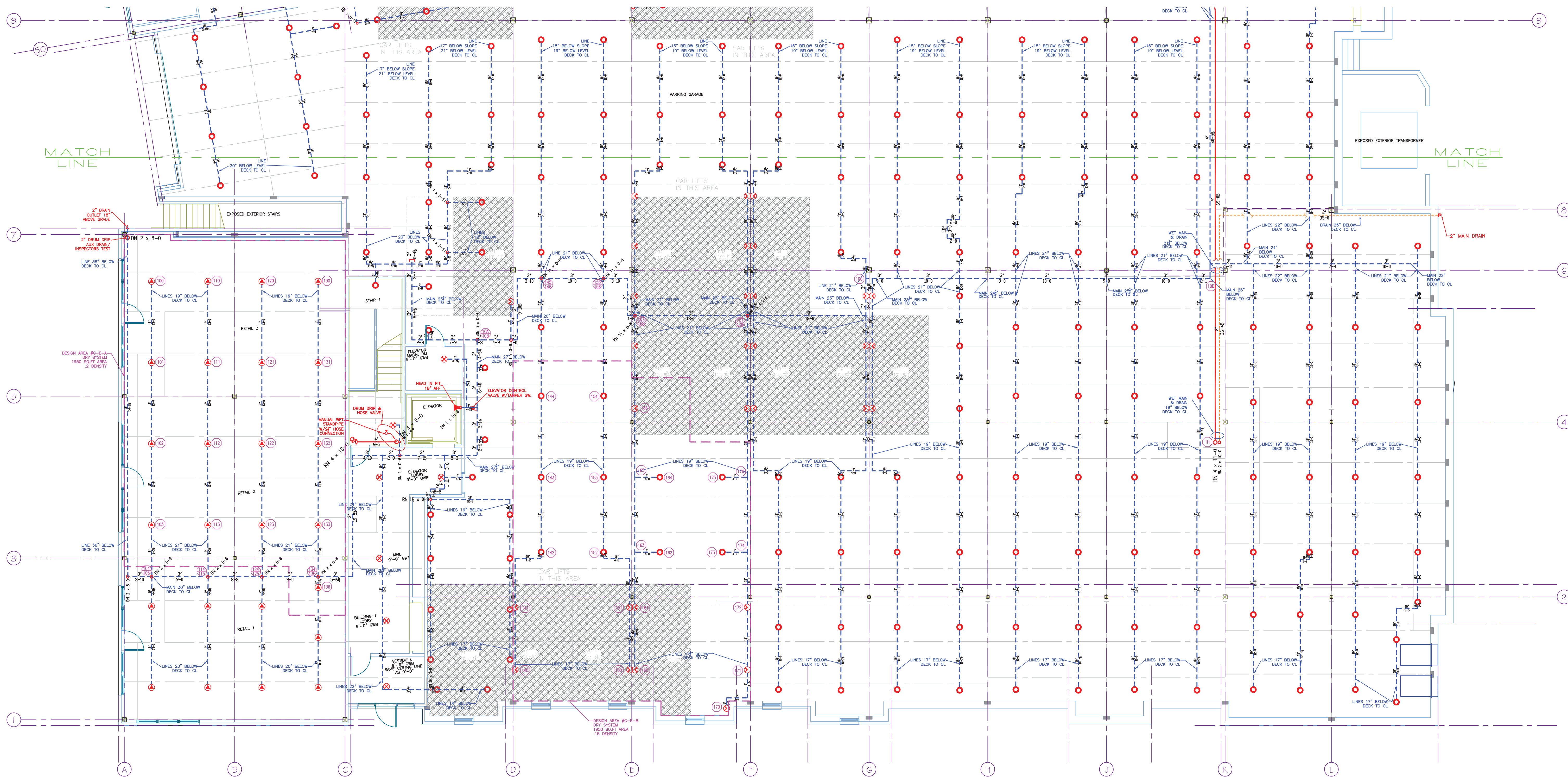
2E SECTION VIEW A
SCALE: N.T.S.



3E ZONE DETAILS
SCALE: N.T.S.



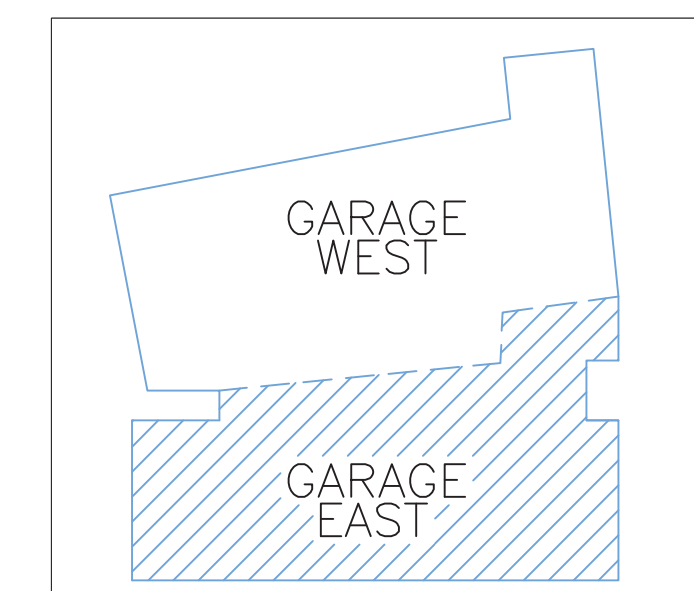
4E PLOT PLAN
SCALE: N.T.S.



1E LOWER LEVEL PARKING (EAST DRY SYSTEM)
TOTAL PROTECTED AREA 11,500 SQ.FT.
SCALE 1/8" = 1'-0"

DESIGN AREA NUMBER G-E-A
HYDRAULIC DESIGN CRITERIA
LOCATION= FUTURE TENANT SPACE EAST SIDE
TYPE OF SYSTEM= NFPA 13 DRY
AREA OF OPERATION= 1950-50.FT.
NUMBER OF SPRINKLERS= 17
DENSITY= 2 W/ HOSE DEMAND OF 250 GPM
HAZARD CLASS= ORDINARY HAZARD GROUP 2
HEAD SPACING= 120 SQ.FT. MAX
SYSTEM DEMAND INCLUDING HOSE @
BASE OF RISER= 676-GPM 91-PSI
SAFETY MARGIN= 5-PSI

DESIGN AREA NUMBER G-E-B
HYDRAULIC DESIGN CRITERIA
LOCATION= AUTO PARKING EAST SIDE
TYPE OF SYSTEM= NFPA 13 DRY
AREA OF OPERATION= 1950-50.FT.
NUMBER OF SPRINKLERS= 20
DENSITY= 15 W/ HOSE DEMAND OF 250 GPM
HAZARD CLASS= ORDINARY HAZARD GROUP 1
HEAD SPACING= 130 SQ.FT. MAX
SYSTEM DEMAND INCLUDING HOSE @
BASE OF RISER= 666-GPM 72-PSI
SAFETY MARGIN= 24-PSI



5E KEY PLAN
SCALE: N.T.S.

HIGH TECH FIRE PROTECTION
P.O. BOX 156
MINOT, ME. 04258-0258
TEL: (207) 998-2551 FAX: (207) 998-4187
MAINE LICENSE # 102

GENERAL CONTRACTOR ON RECORD:
METRIC CORPORATION 55 HENSHAW STREET BOSTON, MA 02135

SPECIAL APPLICATIONS:
DRY SYSTEM IN ACCORDANCE WITH STATE OF MAINE DRY PIPE POLICY 1/2" PITCH PER 10' ON MAINS AND SPRINKLER LINES.

LEGEND:
○ RN/DN PIPE RISER UP OR DOWN
● AUXILIARY DRAIN
— PROPOSED WET PIPE
— PROPOSED DRY PIPE
- - - PROPOSED DRAIN PIPE
⊕ SYSTEM RISER
⊙ HYDRAULIC CALC. POINT

DESIGN & SYSTEM NOTES:
ALL PIPING 1/2" & LARGER TO BE SCHEDULE 10 WITH GROOVED DUCTILE IRON FITTING UNLESS OTHERWISE NOTED.
ALL PIPING 1/4" & SMALLER TO BE SCHEDULE 40 WITH APPROPRIATE FITTING UNLESS OTHERWISE NOTED.
POSITION, LOCATION, SPACING, AND USE OF SPRINKLERS SHALL BE IN ACCORDANCE WITH NFPA 13.
POSITION, LOCATION, SPACING, AND USE OF HANGERS SHALL BE IN ACCORDANCE WITH NFPA 13.
HYDRAULIC CALCULATION PROCEDURES HAVE BEEN DONE IN ACCORDANCE WITH NFPA 13. (SEE PLANS FOR LOCATION OF REMOTE AREAS, HYDRAULIC REFERENCE POINTS, AND SYSTEM DEMANDS.)
HIGH TECH FIRE PROTECTION IS TO BEGIN WORK AT 6' UNDERGROUND INSIDE OF BUILDING.
DIMENSIONS AND LOCATIONS GIVEN FOR SPRINKLER HEADS AND PIPE MAY VARY TO ACCOMMODATE ACTUAL FIELD CONDITIONS.
OWNER TO PROVIDE ADEQUATE HEAT THROUGHOUT BUILDING TO PROTECT WATER FILLED PIPING AND EQUIPMENT FROM FREEZING TEMPERATURES.
ONLY TR-SEA TYPE COUPLINGS TO BE INSTALLED ON DRY AND OR PRE-ACTION SYSTEMS.
OWNER IS RESPONSIBLE TO MAINTAIN THE SPRINKLER SYSTEM IN ACCORDANCE WITH THE LATEST EDITION OF NFPA 13. INSPECTION, TESTING, & MAINTENANCE OF WATER-BASED FIRE PROTECTION SYSTEMS AND/OR ALL APPLICABLE FEDERAL, STATE, AND/OR LOCAL LAWS, CODES AND ORDINANCES.
ALL MECHANICAL, ELECTRICAL AND PLUMBING TRADES TO COORDINATE THEIR WORK WITH SPRINKLER CONTRACTOR.
ALL ELECTRIC WORK IS TO BE DONE BY OTHERS.

HEAD LEGEND:
GLOBE* MODEL GL5661
176 / 200"
K=5.6
1/2" BRASS UPRIGHT ON SPRIGS OR LINE
DEFLECTORS 1" TO 12" BELOW NON-COMBUSTIBLE CEILINGS
GLOBE* MODEL GL8164
27 / 200"
K=5.6
3/4" BRASS UPRIGHT ON SPRIGS OR LINE
DEFLECTORS 4" TO 12" BELOW NON-COMBUSTIBLE CEILINGS
VIKING* MODEL VK106
15 / 200"
K=5.6
1/2" BRASS VERTICAL SIDEWALL ON SPRIGS OR LINE
DEFLECTORS 1" TO 6" BELOW BEAMS UP TO 22" BELOW DECK
GLOBE* MODEL GL5635
9 / 200"
K=5.6
1/2" WHITE DRY PENDENTS SEMI-RECESSED ESC. IN CEILINGS
GLOBE* MODEL GL5626
2 / 200"
K=5.6
1/2" BRASS HORIZONTAL SIDEWALL WITH HEAD CAGE DEFLECTOR 18" ABOVE ELEVATOR PIT FLOOR
OR APPROVED EQUAL

TOTAL HEADS ON THIS SHEET: 229

SCALE: 1/8" = 1'-0"

REVISIONS:
NO. DATE: DESCRIPTION:

DATE: MARCH 1, 2013
DESIGNER: ED PULLIN (RMS# 515)
NICET LEVEL: IW CERT # 108534
CHECKED BY: T. FORTIN / J. FOSS

LOCATION:
40 MIDDLE STREET
PORTLAND, ME

DRAWING TITLE:
THE BAY HOUSE
LOWER LEVEL PARKING
(EAST DRY SYSTEM)

FIRE PROTECTION PLAN
(NFPA 13 2010ed.)

DRAWING NO.:
FP-02

