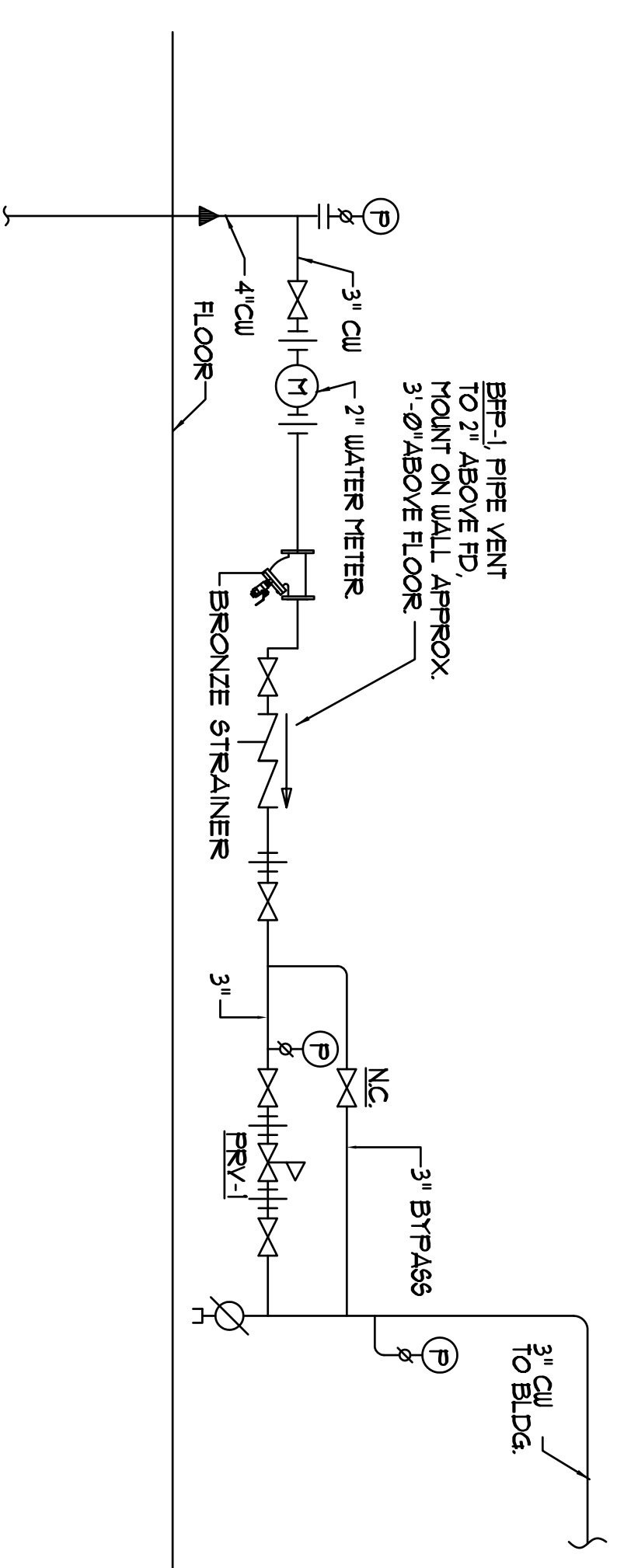
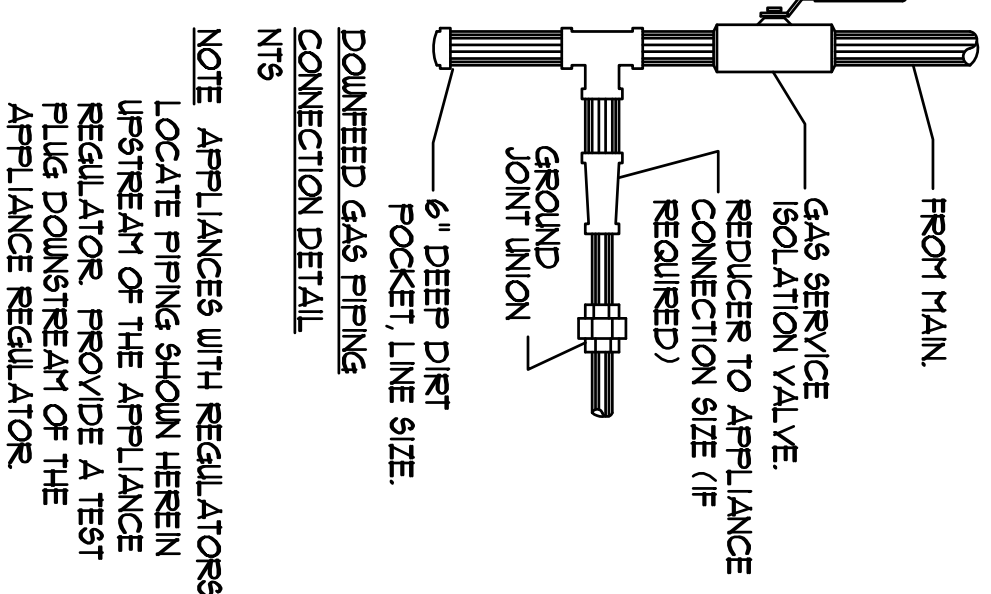


WATER SERVICE DETAIL @ CONDOMINIUM UNITS
NTS

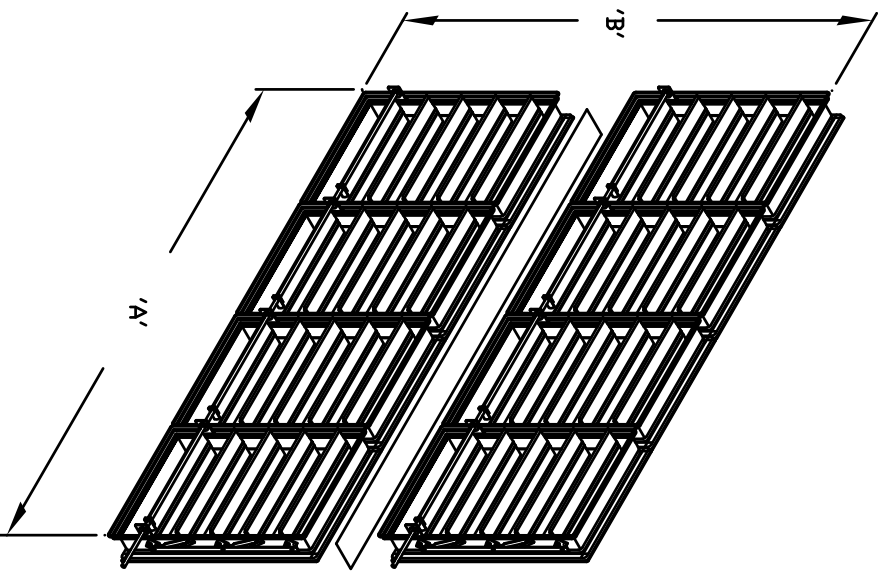


BUILDING WATER SERVICE ENTRANCE DETAIL
NTS



NOTE: APPLIANCES WITH REGULATORS LOCATE PIPING SHOWN HEREIN UPSTREAM OF THE APPLIANCE REGULATOR. PROVIDE A TEST PLUG DOWNSTREAM OF THE APPLIANCE REGULATOR.

MAX UL CLASSIFIED SIZE
FSD60 DB, 60-110B, 370B, 360B, 350B, 340B



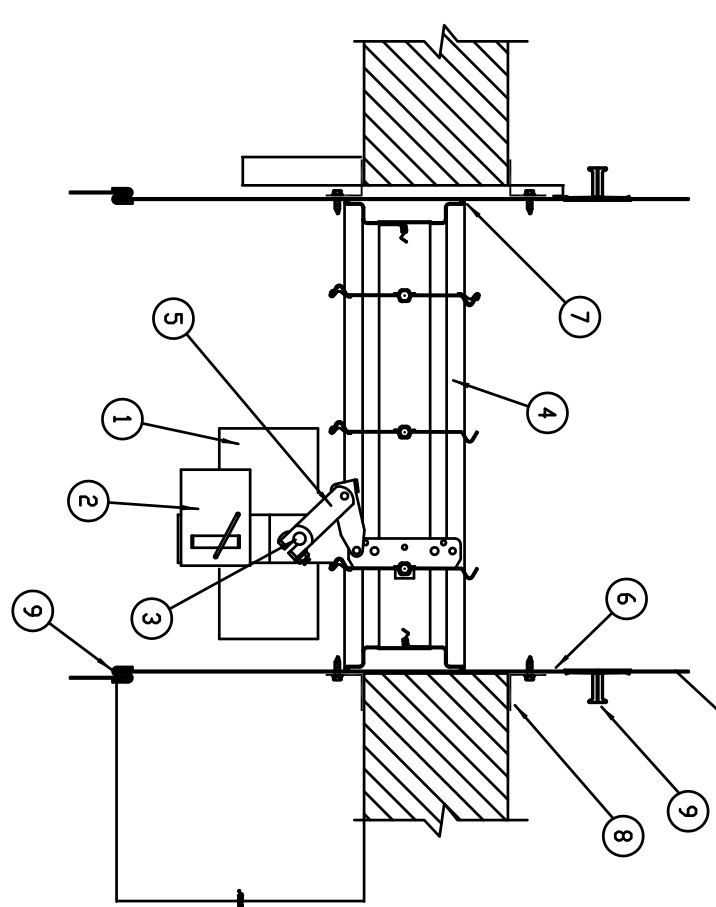
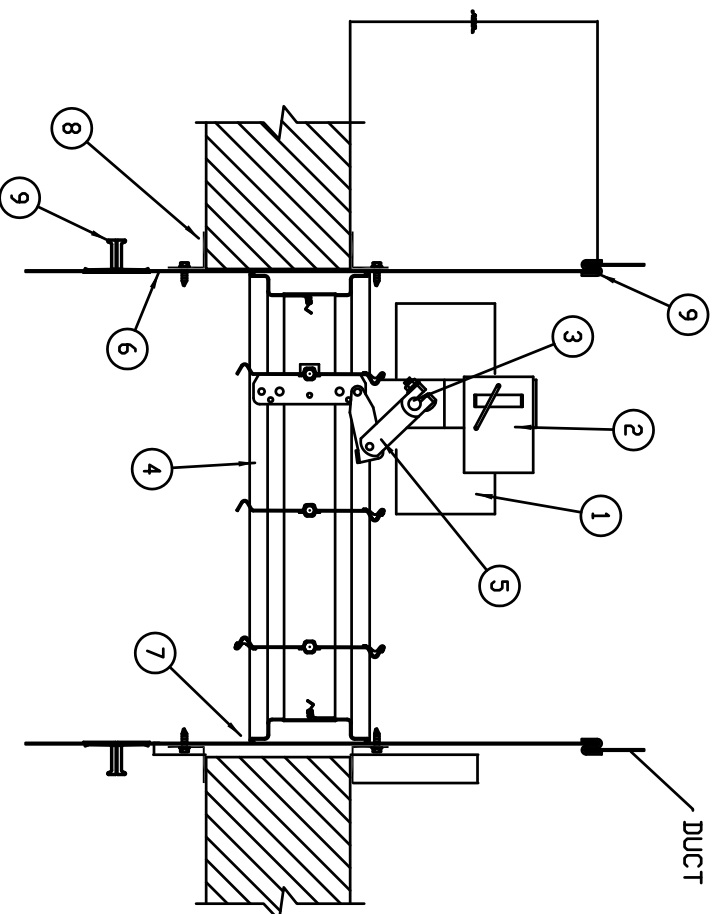
M4 = 122" (2500)
FIR #1256(4)
M4 = 120" (2049)
FOR FSD340B, 350B,
370B, 60 DB, 60-110B
M3 = 122" (2509)
FIR #1256(4)
M3 = 120" (2049)
FOR FSD360B, 60-110B
M2 = 96" (2149)
FIR #1256(4), 350B, 370B

14 GAUGE (2) X
14" DIMENSION X 5"
(1227) WIDE
REINFORCING PLATE

T4G	PANEL SIZE(N)	NECK SIZE(N)	AMT. CU. SPACES (SQ. FT.) (MAX)	THROU(L) THROU(S)	Nc	BASES OR DESIGN FORCE	MODEL
(A)	6'	6"	120	0.05	30	SEE DWD6	SPC-FR
(B)	8'4"	8"	160	0.05	25	SEE DWD6	SPC-FR
(C)	17'4"	17"	250	0.05	25	SEE DWD6	SPC-FR
(D)	14'0"	14"	600	0.05	25	SEE DWD6	220AL
(E)	-	-	-	-	-	-	-
(F)	-	-	-	-	-	-	-
(G)	-	-	-	-	-	-	-
(H)	-	-	-	-	-	-	-
(I)	-	-	-	-	-	-	-
(J)	-	-	-	-	-	-	-
(K)	-	-	-	-	-	-	-
(L)	-	-	-	-	-	-	-
(M)	-	-	-	-	-	-	-
(N)	-	-	-	-	-	-	-
(O)	-	-	-	-	-	-	-
(P)	-	-	-	-	-	-	-
(Q)	-	-	-	-	-	-	-
(R)	-	-	-	-	-	-	-
(S)	-	-	-	-	-	-	-
(T)	-	-	-	-	-	-	-
(U)	-	-	-	-	-	-	-
(V)	-	-	-	-	-	-	-
(W)	-	-	-	-	-	-	-
(X)	-	-	-	-	-	-	-
(Y)	-	-	-	-	-	-	-
(Z)	-	-	-	-	-	-	-

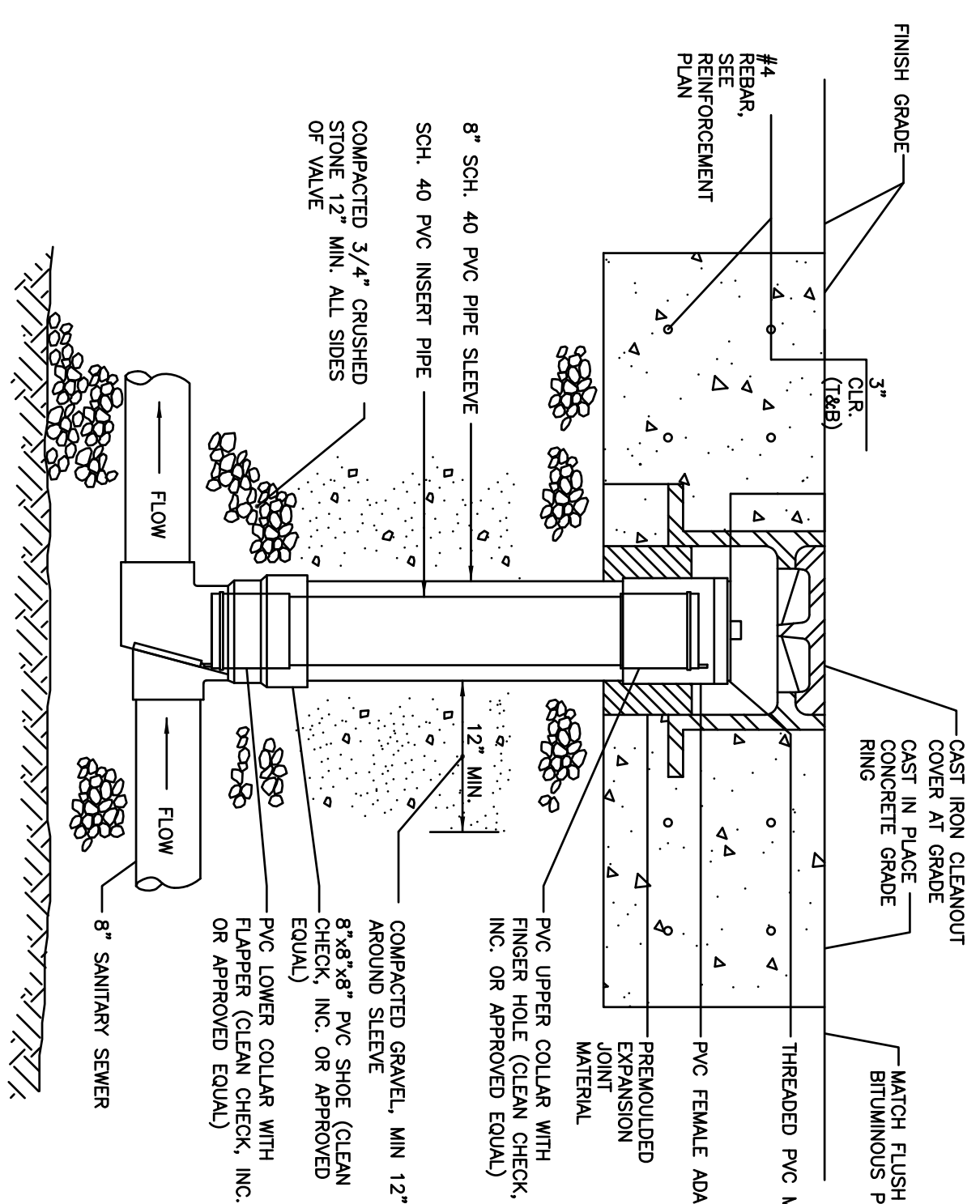
T4G	SIZE(N)	FOUR(GEN)	P2/(P3A)	SETTING (P3A)	WATTS MODEL
FV-1	3	TB, Ø	B	TB	L1223-B-HP
-	-	-	-	-	-
-	-	-	-	-	-

- ITEM DESCRIPTION
- ACTUATOR w/ END SWITCH LOCATION MAY VARY.
 - RUSKINS UL LISTED FIRE DAMPER ACTUATORS MAY BE FIELD INSTALLED IF PROPERLY LABELED. SEE ACTUATOR INSTALLATION INSTRUCTIONS FOR FIELD MOUNTING OF DAMPER ACTUATORS.
 - OPTIONAL FIRESTAY OR SP100
 - OPTIONAL OPENING JACK SHAFI
 - DAMPER
 - DVER CENTER LOCK
 - SLEEVE
 - CAULKING MATERIAL
 - ONLY BE ON EITHER SIDE OF DAMPER FRAME
 - P/PA OR CONVENTIONAL MOUNTING ANGLES
 - S-JOINT/DUCT MATE. SLEEVE TO DUCT
 - RUSKIN MODEL NUMBERS LISTED. APPROVED EQUAL PRODUCTS FROM GREENHECK ARE ACCEPTABLE.



ACTUATOR ABOVE DAMPER

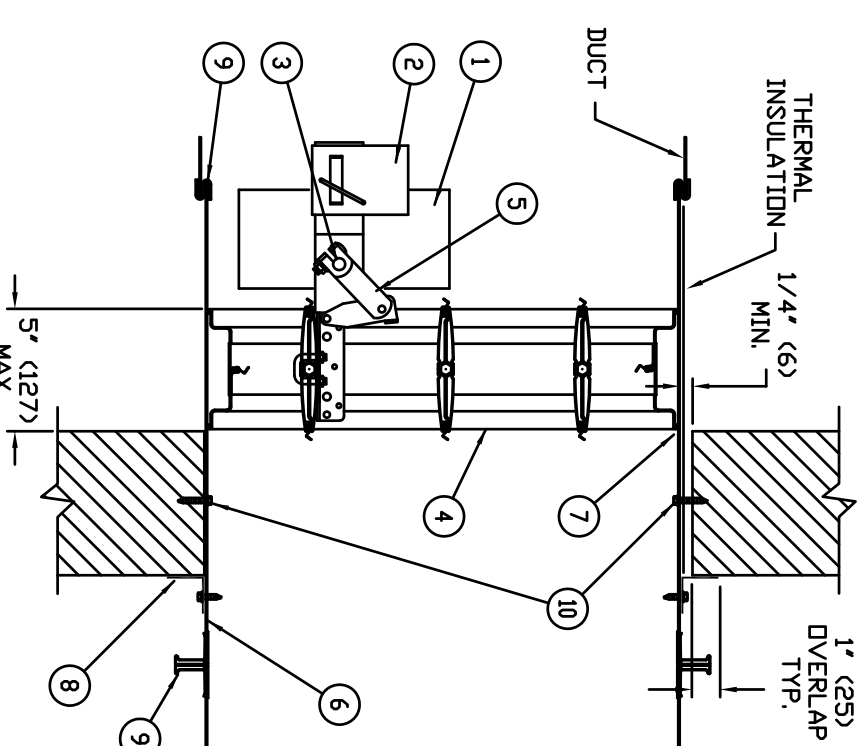
ACTUATOR BELOW DAMPER



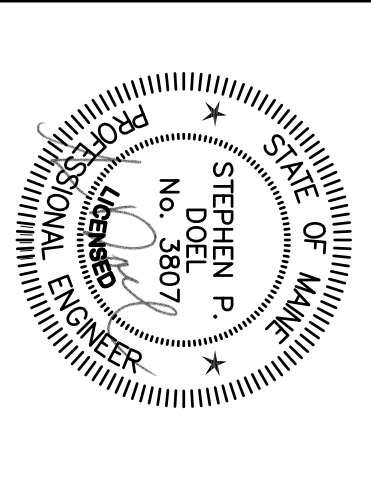
NOTE: MATERIALS AND INSTALLATION PER MANUFACTURER'S INSTRUCTIONS

BACK WATER VALVE DETAIL
NTS

FSD60 DUT OF WALL INSTALLATION



COMBINATION FD / SD INSTALLATION DETAIL
NTS

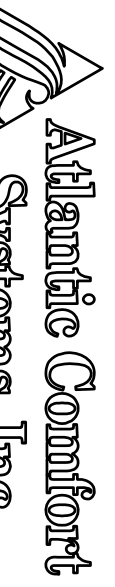


Revisions
11/29/2012-INDRES LAB PIPING FOR CONSTRUCTION
12/14/2012- FOR PERMIT.

Bay House
Portland, ME

BENNETT ENGINEERING
MECHANICAL • ELECTRICAL
(207) 865-9475

Job No.: 3346
Date: 12/14/12
Scale: 1/8" = 1'-0" or A.N.
Drawn by: SP Doel
Checked by: SP Doel
Drawing Title:
Mechanical Details



Mechanical Contractor • 207-284-4390
882 Hill Street, Biddeford, ME 04005
www.atlanticcomfort.com

MP.1