

NAME LICENSE # 102
 GENERAL CONTRACTOR ON RECORD-
 METRIC CORPORATION 55 HENSHAW
 STREET BOSTON, MA 02135

SPECIAL APPLICATIONS:
 DRY SYSTEM IN ACCORDANCE WITH
 STATE OF MAINE DRY PIPE POLICY
 1/2" HIGH PER 10' ON MAINS AND
 SPRINKLER LINES.

LEGEND:
 ○ MAIN PIPE RISER UP OR DOWN
 ● AUXILIARY DRAIN
 — PROPOSED WET PIPE
 - - - PROPOSED DRAIN PIPE
 ⊕ SYSTEM RISER
 ⊙ HYDRAULIC CALC. POINT

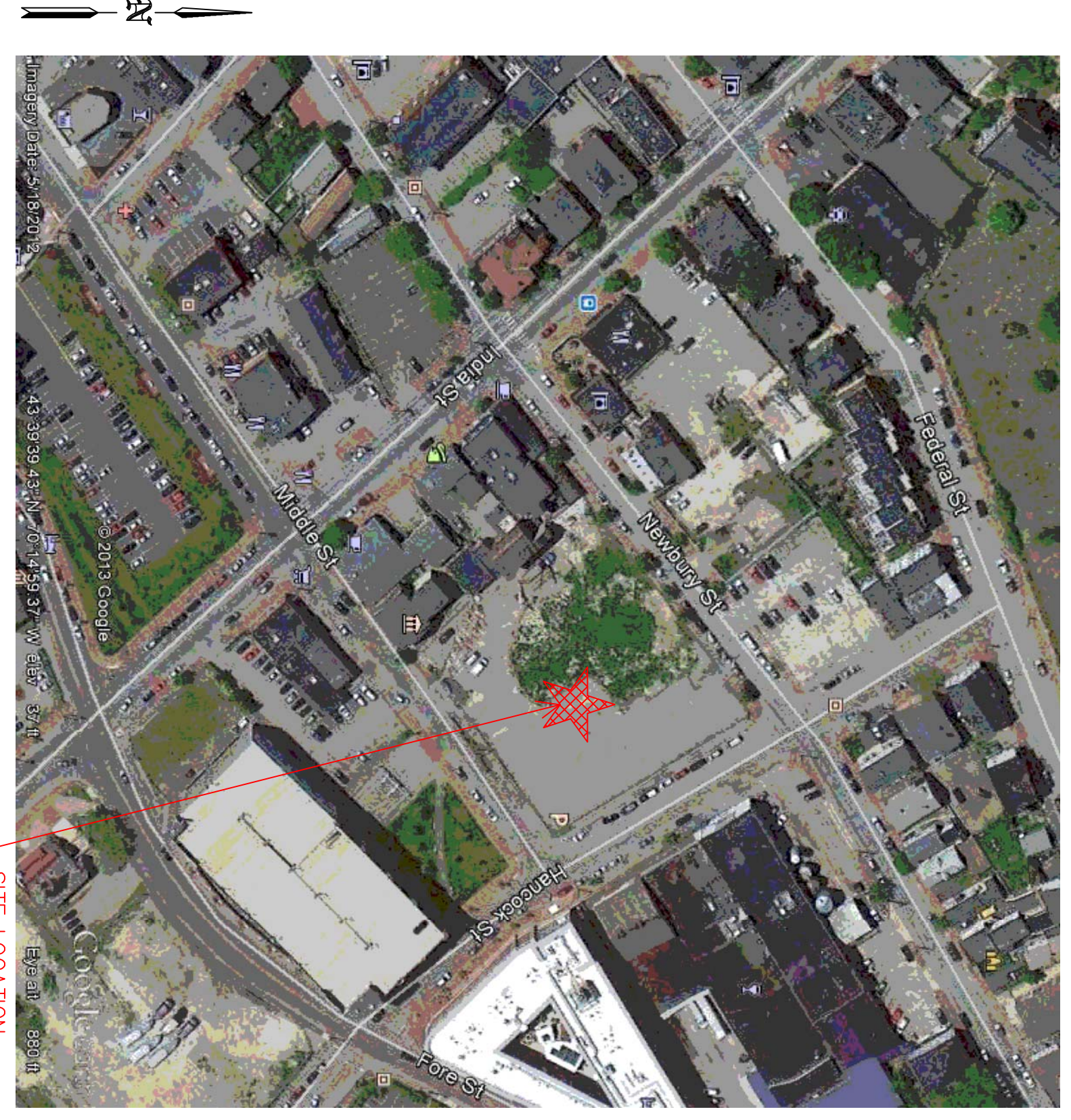
DESIGN & SYSTEM NOTES:
 WITH APPROVED 1/2" HIGH PER 10' POLICY, THE SCHEDULE TO
 ALL MAINS SHALL BE SCHEDULE 40
 ALL PIPING 1 1/2" & SMALLER TO BE SCHEDULE 40
 WITH APPROPRIATE FINISH UNLESS OTHERWISE NOTED
 EGS SHALL BE IN ACCORDANCE WITH NFPA 13
 POSITION, LOCATION, SPACING AND USE OF HANGERS
 SHALL BE IN ACCORDANCE WITH NFPA 13
 DONE IN ACCORDANCE WITH NFPA 13 (SEE PLANS
 FOR LOCATION OF RISES, TESTS, HYDRAULIC
 CALC. POINTS, AND OTHER DETAILS)
 HIGH TIE-UP PROTECTION IS TO BE SHOWN
 AT 6" UNDERGROUND INSIDE OF BUILDING
 DIMENSIONS AND LOCATIONS SHOWN FOR SPRINKLER
 ACTUAL FIELD CONDITIONS
 OWNER TO PROVIDE ADEQUATE HEAT THROUGHOUT
 BUILDING TO PROTECT WATER FILLED PIPING AND
 EQUIPMENT FROM FREEZING TEMPERATURES
 ON DRY AND DRY ACTION SYSTEMS (SHOWN
 ON DRY AND DRY ACTION SYSTEMS)
 OWNER IS RESPONSIBLE TO MAINTAIN THE SPRINKLER
 OF NEPA A QUALIFIED TESTING, CERTIFICATION
 OF WATER-BASED FIRE PROTECTION SYSTEMS AND/
 LINES, COES AND SPRINKLES, AND/OR LOCAL
 ALL MECHANICAL, ELECTRICAL AND PLUMBING
 TRADES TO COORDINATE THEIR WORK WITH
 SPRINKLER CONTRACTOR.
 ALL ELECTRICAL WORK IS TO BE DONE BY OTHERS.

HEAD LEGEND:
 ○ Q-08E*
 MODEL G15661
 (15/7200)
 (K=5.6)
 1/2" BRASS UPRIGHT
 DEFLECTORS 1" TO 12" BELOW
 NON-COMBUSTIBLE CEILINGS
 Q-08E*
 MODEL G18164
 (27/2800)
 (K=5.6)
 3/4" BRASS UPRIGHT
 DEFLECTORS ON LINE
 ON SPRINGS OR LINE
 NON-COMBUSTIBLE CEILINGS
 YIKING*
 MODEL W4106
 (15/2200)
 (K=5.6)
 1/2" BRASS VERTICAL SIDEWALL
 DEFLECTORS 1" TO 6" BELOW
 BEAMS UP TO 22" BELOW DECK

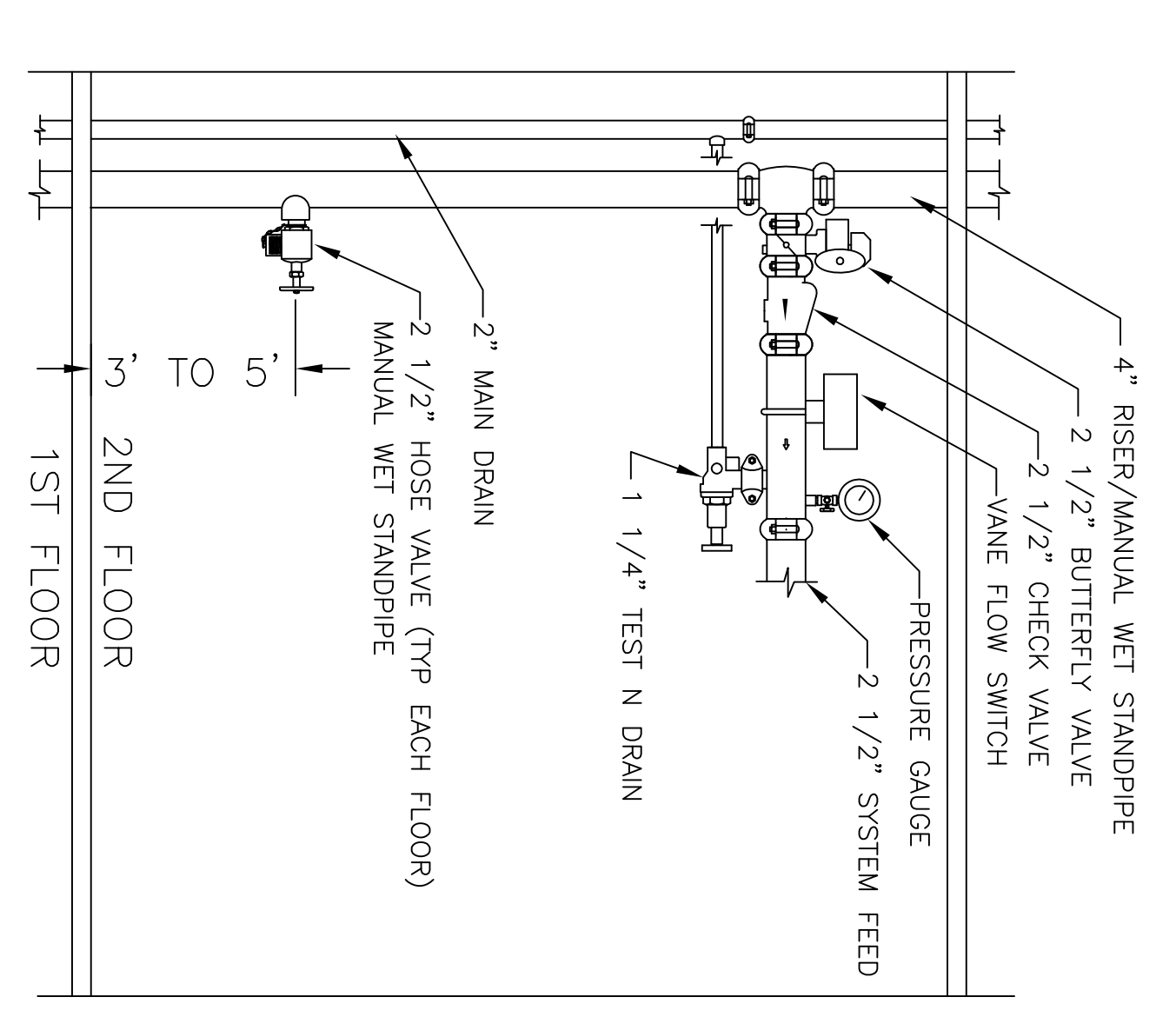
Q-08E*
 MODEL G15635
 (9/7200)
 (K=5.6)
 1/2" WHITE DRY PENDENTS
 SEMI-RECESSED ESC.
 IN CEILINGS
 Q-08E*
 MODEL G15626
 (2/2200)
 (K=5.6)
 1/2" BRASS HORIZONTAL
 SIDEWALL WITH HEAD CAGE
 DEFLECTOR 18" ABOVE ELEVATOR
 HI FLOOR

OR APPROVED EQUAL
 TOTAL HEADS ON THIS SHEET: 229
 SCALE: 3/16" = 1'-0"
 REVISIONS:
 NO. DATE DESCRIPTION:
 DATE: MARCH 1, 2013
 DESIGNER: ED DOWLIN (RMSJ 515)
 CHECKED BY: T. BOHNN / J. BOSS

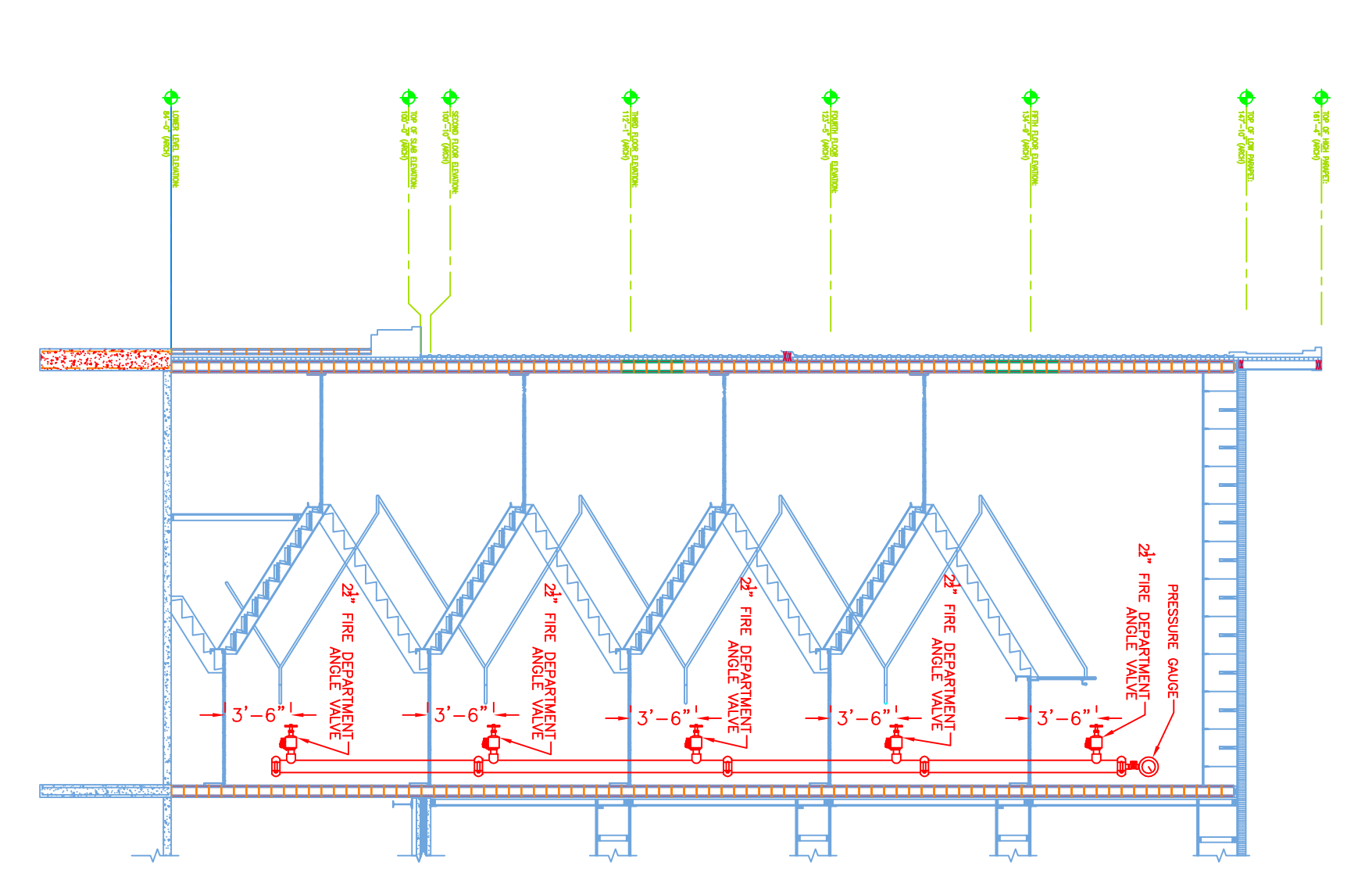
LOCATION:
 40 MIDDLE STREET
 PORTLAND, ME
 DRAWING TITLE:
 THE BAY HOUSE
 LOWER LEVEL PARKING
 (EAST DRY SYSTEM)
 FIRE PROTECTION PLAN
 (NFPA 13 2010ed.)
 DRAWING NO.:
 FP-02



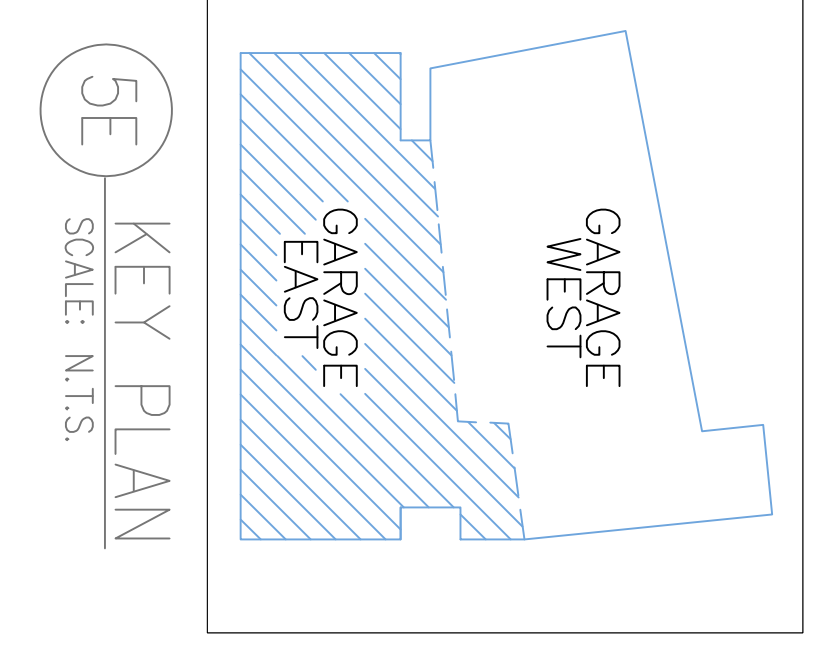
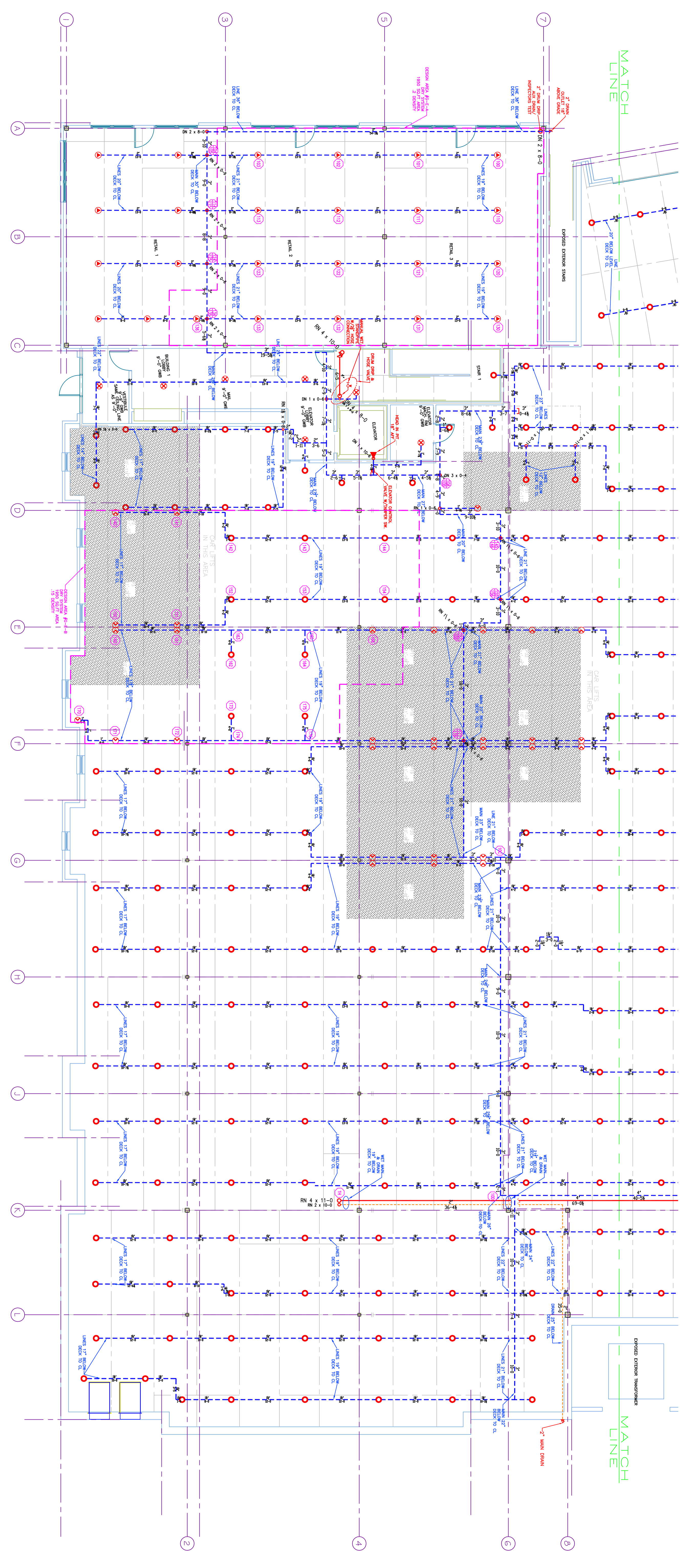
4E PLOT PLAN
 SCALE: N.T.S.



3E ZONE DETAILS
 SCALE: N.T.S.



2E SECTION VIEW A
 SCALE: N.T.S.



5E KEY PLAN
 SCALE: N.T.S.

DESIGN AREA NUMBER G-E-A
HYDRAULIC DESIGN CRITERIA
 TYPE OF SYSTEM: WET PIPE
 TYPE OF SPRINKLER: ESJ
 RATED SPRINKLER: 150 SOFT MAX
 DESIGNER: ED DOWLIN (RMSJ 515)
 CHECKED BY: T. BOHNN / J. BOSS
 DATE: MARCH 1, 2013
 SAFETY WARNING: 5-195

DESIGN AREA NUMBER G-E-B
HYDRAULIC DESIGN CRITERIA
 TYPE OF SYSTEM: WET PIPE
 TYPE OF SPRINKLER: ESJ
 RATED SPRINKLER: 150 SOFT MAX
 DESIGNER: ED DOWLIN (RMSJ 515)
 CHECKED BY: T. BOHNN / J. BOSS
 DATE: MARCH 1, 2013
 SAFETY WARNING: 5-195

1E LOWER LEVEL PARKING (EAST DRY SYSTEM)
 TOTAL PROTECTED AREA 11,500 SQ.FT.
 SCALE 1/8" = 1'-0"
 N

