

**PROJECT DESCRIPTION**

**BUILDING CONSIST:**  
 THE BUILDING CONSISTS OF A PARKING GARAGE BELOW WITH 2 BUILDINGS ABOVE FLOORS EACH.  
 THE PARKING GARAGE STRUCTURE IS STEEL I-BEAM CONSTRUCTION WITH CONCRETE DECKING AND 2HR RATED SPRINKLER FIRE PROOFING. STEEL SPRINKLER PIPING AS SHOWN ON PLAN.  
 THE 4 RESIDENTIAL LEVELS ARE CONSTRUCTED OF WOOD FRAMING FIBERGLASS INSULATION, AND GYP BOARD CONSTRUCTION.  
 BUILDING OCCUPANCY:  
 THE BUILDING WAS BUILT & DESIGNED FOR PARKING AND MERCHANDISE USE ON THE GARAGE LEVEL FOR RESIDENTIAL USE. SPRINKLER SYSTEM DESIGN.  
 THERE ARE 2 DRY SYSTEMS FOR THE PARKING GARAGE AND MERCHANDISE SPACE DESIGNED IN ACCORDANCE WITH NFPA 13. PARKING GARAGE IS DESIGNED FOR ORDINARY HAZARD GROUP 1. MERCHANDISE AREA IS DESIGNED FOR ORDINARY HAZARD GROUP 2.  
 THERE ARE SEPARATE WET SYSTEMS FOR EACH RESIDENTIAL FLOOR. 4 ZONES IN BUILDING 1 & 4 ZONES IN BUILDING 2.  
 THE RESIDENTIAL LIVING SPACE & CORRIDOR IS COVERED WITH RESIDENTIAL PENDENT SPRINKLER HEADS FED FROM CPVC PIPING ABOVE. GC TO PROPERLY INSULATE TO PREVENT WATER FLEED SPRINKLER PIPING FROM FREEZING.  
 THERE IS A 4" WET MANUAL STANDPIPE BEING INSTALLED IN TOWER #1 & #2 AND WILL HAVE A 2 1/2" HOSE VALVES ON ALL FLOOR STAIR LANDINGS SHOWN ON PLANS.  
 THE SPRINKLER SYSTEM AND STANDPIPE WERE DESIGNED TO MEET ALL APPLICABLE CODES REGARDING NFPA 13 2010ED AND NFPA 14.

**HIGH TECH FIRE PROTECTION**

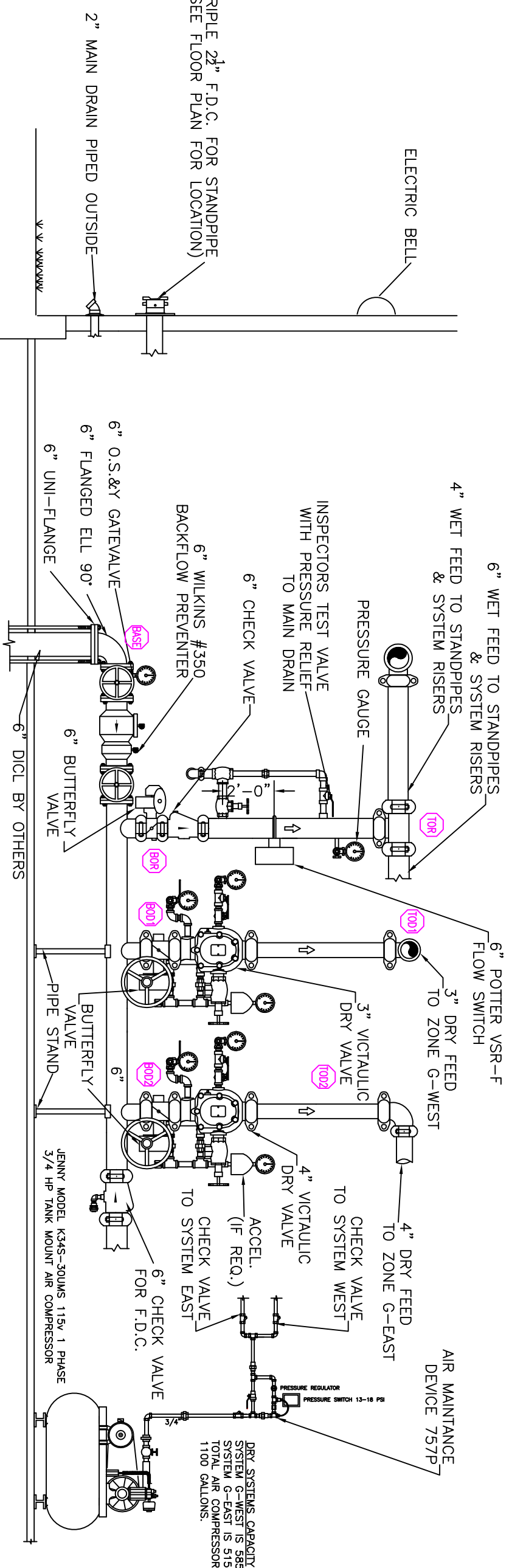
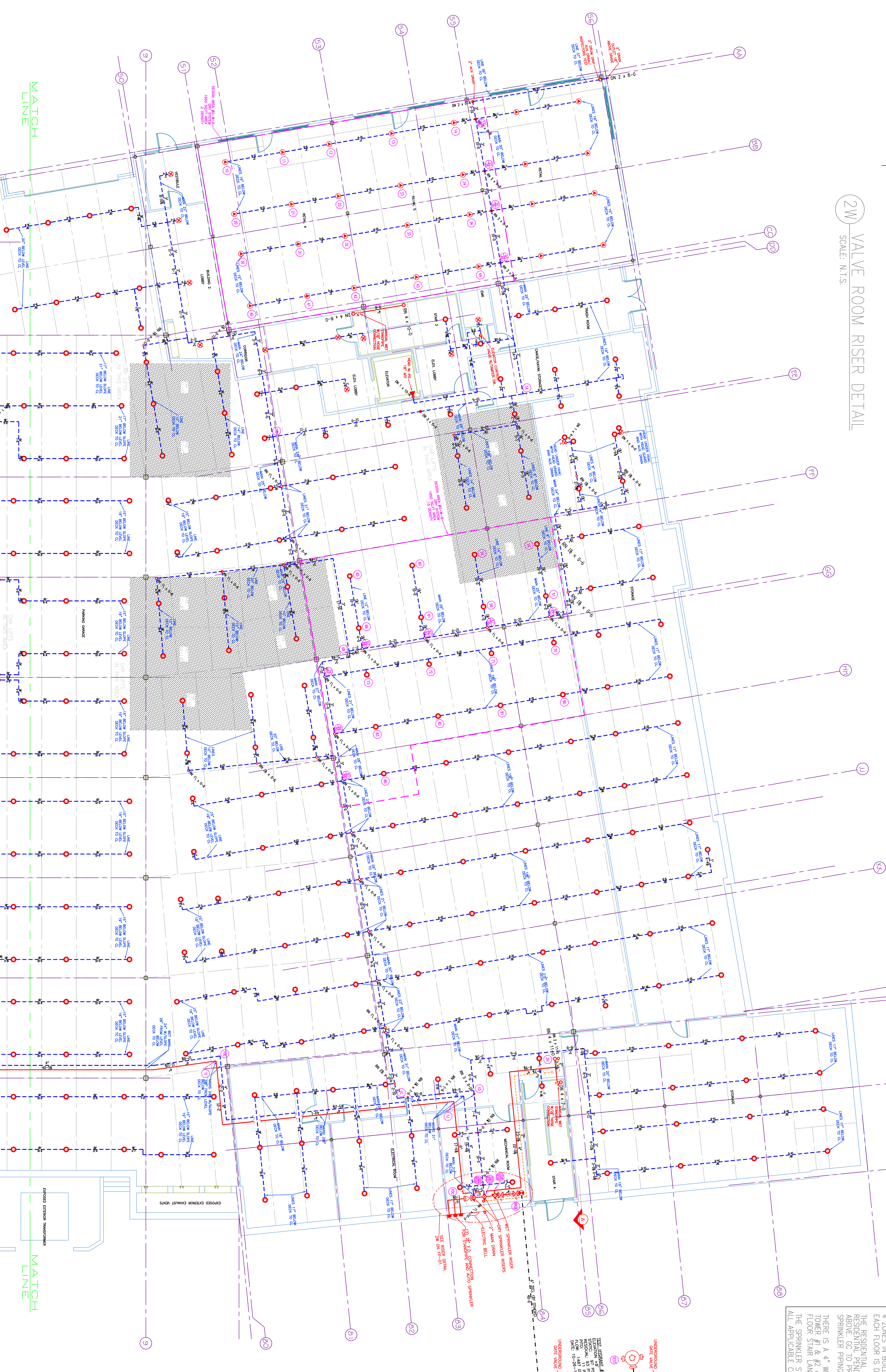
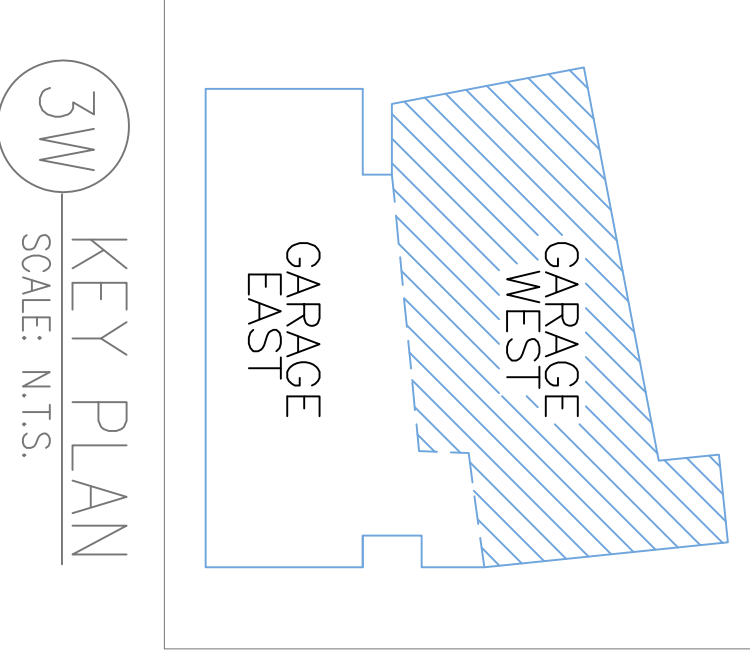
P.O. BOX 156  
 WINTHROP, ME 02428-0156  
 TEL:(207) 998-2581 FAX:(207) 998-4877  
 NAME LICENSE # 102  
 GENERAL CONTRACTOR ON RECORD-  
 METRIC CORPORATION 55 HENSHAW  
 STREET BOSTON, MA 02135

**SPECIAL APPLICATIONS:**  
 DRY SYSTEM IN ACCORDANCE WITH STATE OF MAINE DRY PIPE CODE 1/2" RHOSE PER 10 ON MAINS AND SPRINKLER LINES.

**LEGEND:**  
 ○ R/W/M PIPE RISER UP OR DOWN  
 — AUXILIARY DRAIN  
 — PROPOSED WET PIPE  
 — PROPOSED DRAIN PIPE  
 — SYSTEM RISER  
 ⊙ HYDRAULIC CALC. POINT

**DESIGN & SYSTEM NOTES:**  
 WITH APPROVED EQUALS TO ALL PIPING 1 1/2" & SMALLER TO BE SCHEDULE 40 UNLESS NOTED OTHERWISE.  
 POSITION, LOCATION, SPACING, AND USE OF HANGERS SHALL BE IN ACCORDANCE WITH NFPA 13. THE DESIGN SHALL BE IN ACCORDANCE WITH NFPA 13. (SEE PLANS FOR LOCATION OF RATED SPRINKLER HEADS, HANGERS, AND HANGERS).  
 HIGH TECH FIRE PROTECTION IS TO BE WORK AT 6" UNDERGROUND INSIDE OF BUILDING DIMENSIONS AND LOCATIONS SHOWN FOR SPRINKLER ACTUAL FIELD CONDITIONS.  
 OWNERS TO PROVIDE ABSOLUTE HEAT THROUGHOUT BUILDING TO PROTECT WATER FILLED PIPING AND EQUIPMENT FROM FREEZING TEMPERATURES.  
 ALL MECHANICAL, ELECTRICAL AND PLUMBING TRADES TO COORDINATE THEIR WORK WITH SPRINKLER CONTRACTOR.  
 ALL ELECTRICAL WORK IS TO BE DONE BY OTHERS.  
**HEAD LEGEND:**  
 ○ Q.08E\* MODEL G15661 (15/7200) 1 1/2" BRASS UPRIGHT DEFLECTORS 1" TO 1 1/2" BELOW NON-COMBUSTIBLE CEILING  
 ○ Q.08E\* MODEL G15614 (27/2800) 3/4" BRASS UPRIGHT DEFLECTORS ON SPRINGS OR LINE NON-COMBUSTIBLE CEILING  
 ○ Q.08E\* MODEL G15615 (15/7200) 1 1/2" BRASS VERTICAL SIDEWALL DEFLECTORS 1" TO 6" BELOW BEAMS UP TO 22" BELOW DECK  
 ○ Q.08E\* MODEL G15635 (9/7200) 1/2" WHITE DRY PENDENTS SEMI-RECESSED ESC IN CEILING  
 ○ Q.08E\* MODEL G15626 (2/2200) 1/2" BRASS HORIZONTAL SIDEWALL WITH HEAD CAGE DEFLECTOR 18" ABOVE ELEVATOR H/F FLOOR

**FOR APPROVED EQUALS:**  
 TOTAL HEADS ON THIS SHEET: 229  
 SCALE: 1/8" = 1'-0"  
 REVISIONS:  
 NO. DATE DESCRIPTION:  
 DATE: MARCH 1, 2013  
 DESIGNER: ED DOULAN (RMS# 515)  
 CHECKED BY: T. BOHNI / J. BOSS  
 LOCATION:  
 40 MIDDLE STREET  
 PORTLAND, ME  
 DRAWING TITLE:  
 THE BAY HOUSE  
 LOWER LEVEL PARKING  
 (WEST DRY SYSTEM)  
 FIRE PROTECTION PLAN  
 (NFPA 13 2010ed.)  
 DRAWING NO.:  
 FP-01



**DESIGN AREA NUMBER G-W-4\***  
 HYDRAULIC DESIGN CRITERIA:  
 LOCATION: AUTO PARKING WEST SIDE  
 AREA OF PROTECTION: 180-2071  
 DESIGN: 4.5 WET DESIGN OF 220 GPM  
 HEAD SPAN: 120 SOFT. MAX.  
 SYSTEM DEMAND INCLUDING WET: 4  
 SAFETY FACTOR: 1.5

**DESIGN AREA NUMBER G-W-B\***  
 HYDRAULIC DESIGN CRITERIA:  
 LOCATION: AUTO PARKING WEST SIDE  
 AREA OF PROTECTION: 180-2071  
 DESIGN: 4.5 WET DESIGN OF 220 GPM  
 HEAD SPAN: 120 SOFT. MAX.  
 SYSTEM DEMAND INCLUDING WET: 4  
 SAFETY FACTOR: 1.5

**1W LOWER LEVEL PARKING (WEST DRY SYSTEM)**  
 TOTAL PROTECTED AREA 22800 SQ.FT.  
 SCALE 1/8" = 1'-0"

