

Corey Electric
609 Main Street #3
Westbrook, ME 04092

Bartlett Design
LIGHTING & ELECTRICAL ENGINEERING
942 WASHINGTON STREET, BATH, ME 04500
TEL: (207) 443-5447 FAX: (207) 443-5580

THE VILLAGE AT OCEANGATE, LLC
c/o Atlas Investments Group
35 Fay Street Suite 5-2
Boston, MA 02118

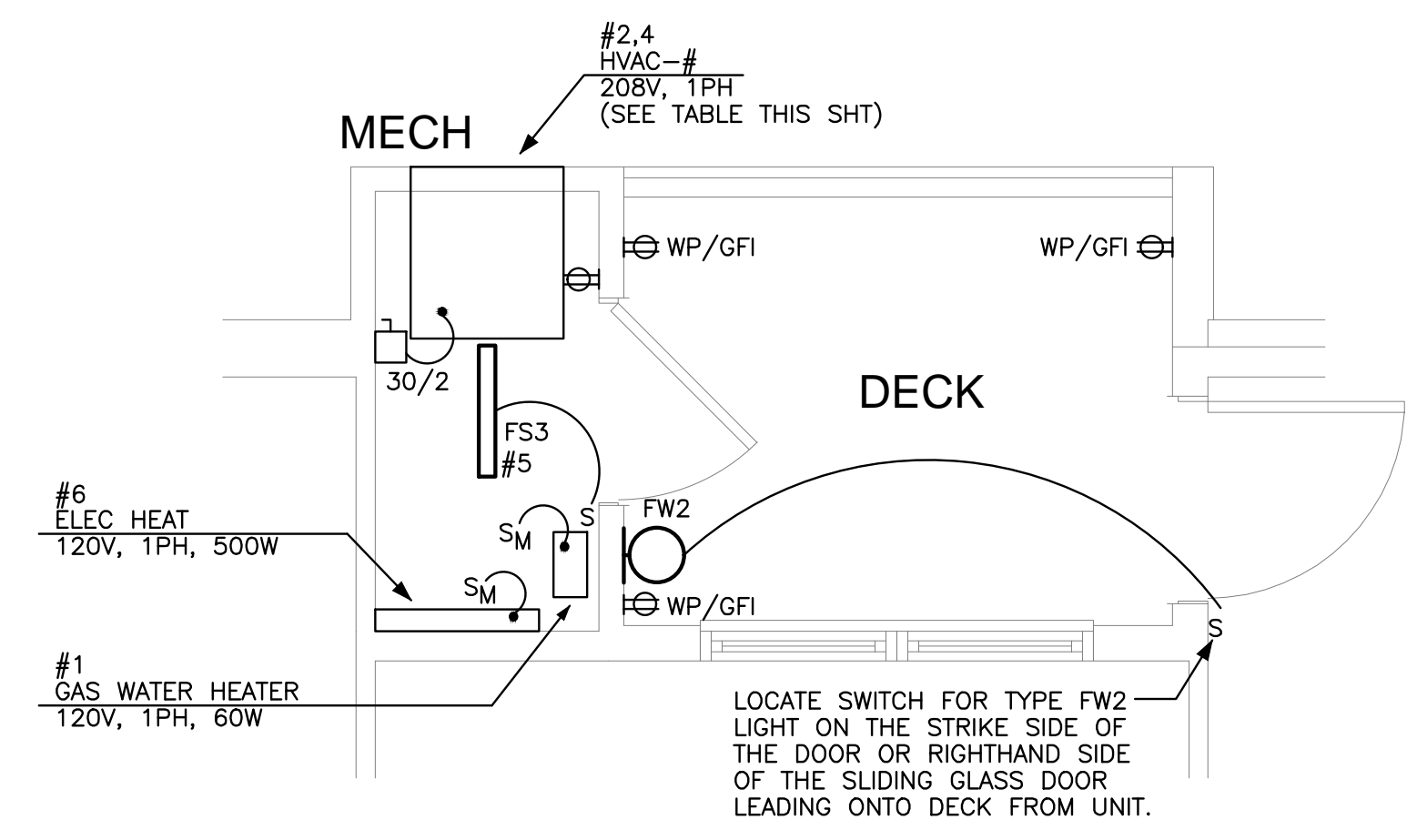
THE BAY HOUSE
Middle Street
Portland, Maine

UNITS A & A1
Unit Plans
Scale: 1/4" = 1'-0"
Commission No: 11-013
Date: February 25, 2013

REVISIONS:

DRG. NO.

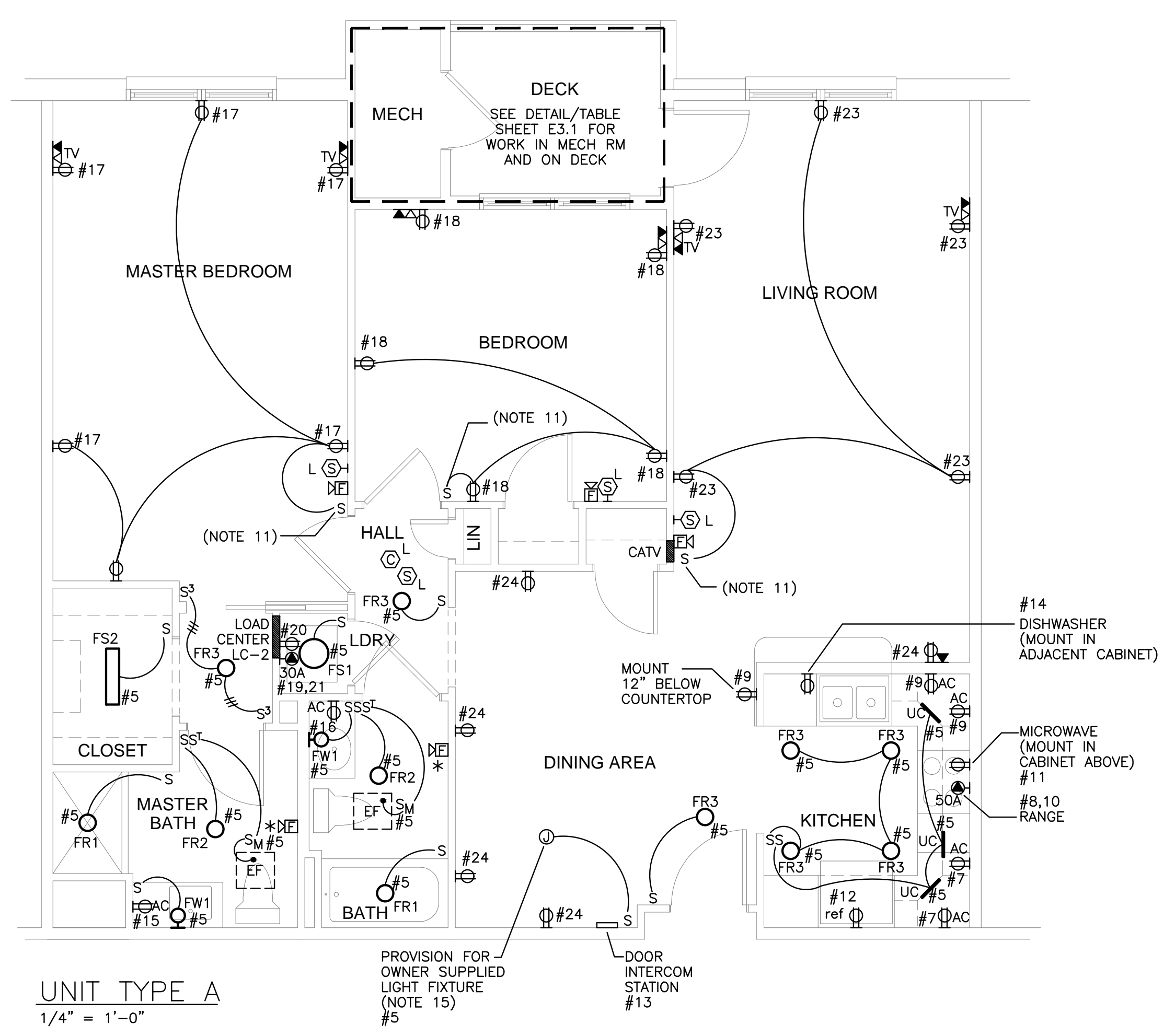
E3.1



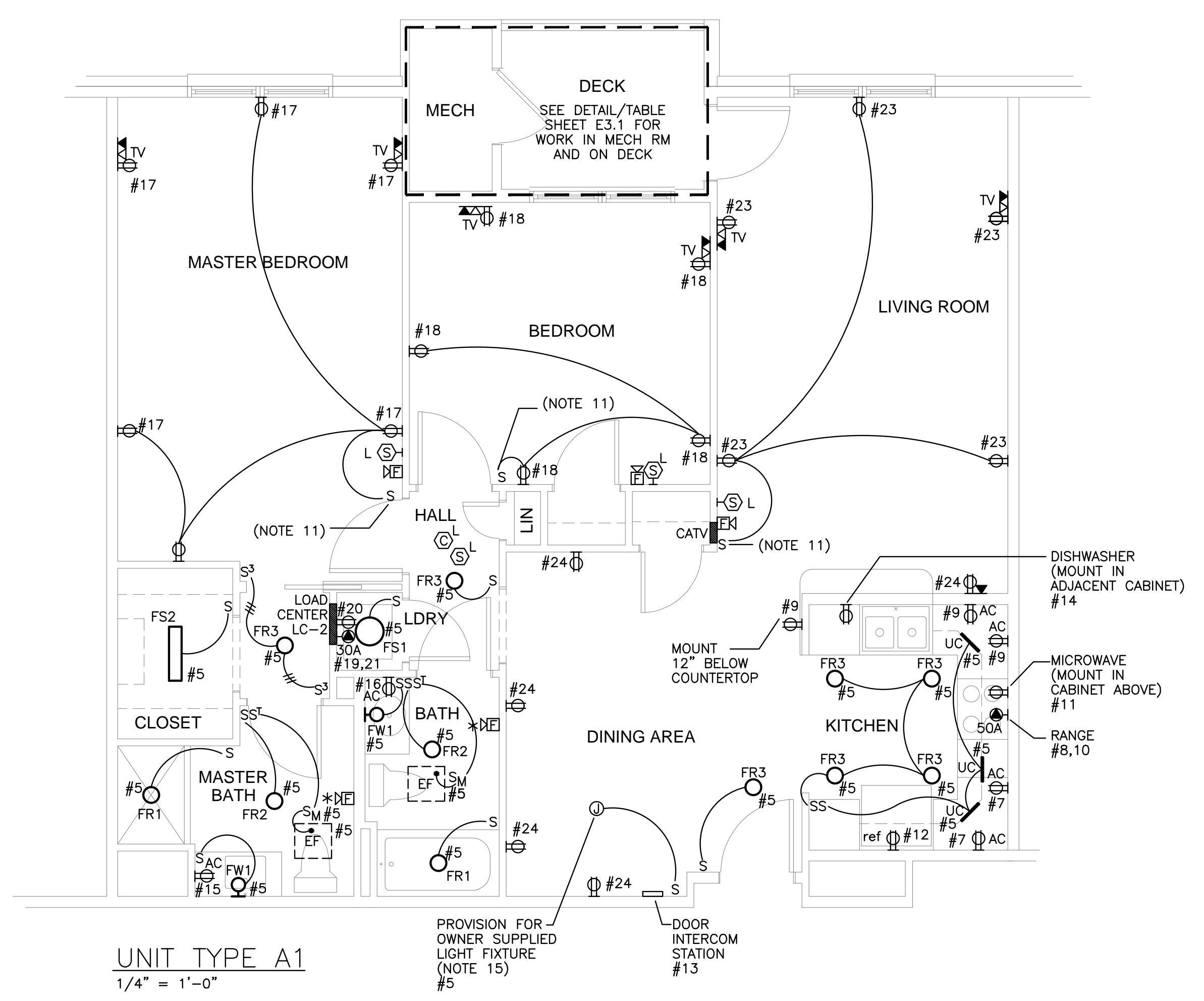
UNIT TYPE	HVAC-1	HVAC-2	CIRCUIT BREAKER	WIRE SIZE	RECEPTACLE CIRCUIT
TYPE A		X	30A/2P	2 #10, 1 #12 GND, 3/4" CDT	LC-2 #26
TYPE A1		X	30A/2P	2 #10, 1 #12 GND, 3/4" CDT	LC-2 #26
TYPE C		X	30A/2P	2 #10, 1 #12 GND, 3/4" CDT	LC-2 #26
TYPE D		X	30A/2P	2 #10, 1 #12 GND, 3/4" CDT	LC-2 #26
TYPE E	X		20A/2P	2 #12, 1 #12 GND, 3/4" CDT	LC-1 #21
TYPE F	X		20A/2P	2 #12, 1 #12 GND, 3/4" CDT	LC-1 #21
TYPE G	X		20A/2P	2 #12, 1 #12 GND, 3/4" CDT	LC-1 #21
TYPE H		X	30A/2P	2 #10, 1 #12 GND, 3/4" CDT	LC-2 #26
TYPE I		X	30A/2P	2 #10, 1 #12 GND, 3/4" CDT	LC-2 #26
TYPE J		X	30A/2P	2 #10, 1 #12 GND, 3/4" CDT	LC-2 #26
TYPE K	X		20A/2P	2 #12, 1 #12 GND, 3/4" CDT	LC-1 #21
TYPE L		X	30A/2P	2 #10, 1 #12 GND, 3/4" CDT	LC-3 #28
TYPE M		X	30A/2P	2 #10, 1 #12 GND, 3/4" CDT	LC-3 #28
TYPE N	X		30A/2P	2 #10, 1 #12 GND, 3/4" CDT	LC-3 #28
TYPE P	X		30A/2P	2 #10, 1 #12 GND, 3/4" CDT	LC-2 #26
TYPE Q	X		30A/2P	2 #10, 1 #12 GND, 3/4" CDT	LC-2 #26
TYPE R	X		20A/2P	2 #12, 1 #12 GND, 3/4" CDT	LC-1 #21
TYPE S		X	30A/2P	2 #10, 1 #12 GND, 3/4" CDT	LC-3 #28

- UNIT PLAN NOTES:**
- ALL 120V RECEPTACLES IN KITCHENS AND BATHROOMS SHALL BE GFCI RATED EXCEPT FOR THE REFRIGERATOR.
 - MINIMUM CIRCUIT BREAKER SIZE SHALL BE 20 AMP. MINIMUM WIRE SIZE SHALL BE #12 AWG.
 - CONNECT ALL 120 VOLT RECEPTACLE CIRCUITS IN LIVING UNITS TO ARC-FAULT TYPE CIRCUIT BREAKERS IN LOAD CENTERS.
 - ALL RECEPTACLES IN LIVING UNITS SHALL BE TAMPER-RESISTANT.
 - COMBINATION HORN/STROBE/SMOKE DETECTORS SHALL BE PHOTOELECTRIC TYPE.
 - SMOKE DETECTORS AND CARBON MONOXIDE DETECTORS IN LIVING UNITS SHALL BE CIRCUITED TO THE LOCAL LIGHTING CIRCUIT.
 - WHERE STROBE CANDELA RATING IS NOT SHOWN FOR HOUSE FIRE ALARM NOTIFICATION APPLIANCES, STROBE RATING SHALL BE 15cd.
 - PROVIDE A 50 AMPERE RATED RECEPTACLE FOR THE KITCHEN RANGE. CIRCUIT TO LOAD CENTER WITH 3 #6, 1 #8 GND, IN A 3/4" CDT.
 - CIRCUIT DESIGNATIONS FOR DEVICES SHOWN REFER TO LIVING UNIT LOAD CENTERS.
 - COORDINATE THE EXACT LOCATION OF RECEPTACLES IN KITCHENS SO THAT NO POINT ON THE COUNTER IS GREATER THAN 24" TO A RECEPTACLE. PROVIDE AN ABOVE COUNTER RECEPTACLE AT ALL KITCHEN COUNTERS THAT ARE GREATER THAN 12".
 - CONNECT TOP HALF OF RECEPTACLE(S) INDICATED TO SWITCH. BOTTOM HALF SHALL BE "HOT" AT ALL TIMES. PROVIDE A 30 AMPERE RATED RECEPTACLE FOR THE DRYER UNIT. CIRCUIT TO LOAD CENTER WITH 2 #10, 1 #12GND, IN A 3/4" CDT.
 - COORDINATE THE EXACT LOCATION OF ALL MECHANICAL EQUIPMENT WITH MECHANICAL CONTRACTOR PRIOR TO ROUGH-IN.
 - COORDINATE THE EXACT LOCATION OF EXHAUST FANS WITH MECHANICAL CONTRACTOR PRIOR TO ROUGH-IN. CONNECT TO A TIME-DELAY SWITCH LOCATED AS SHOWN ON DRAWINGS. CIRCUIT FAN TO UNIT'S LIGHTING CIRCUIT.
 - COORDINATE THE EXACT LOCATION OF THE JUNCTION BOXES FOR OWNER PROVIDED LIGHTS WITH THE ARCHITECT/OWNER PRIOR TO ROUGH-IN.

TYPICAL MECH CLOSET AND DECK LAYOUT
3/8" = 1'-0"



UNIT TYPE A
1/4" = 1'-0"



UNIT TYPE A1
1/4" = 1'-0"