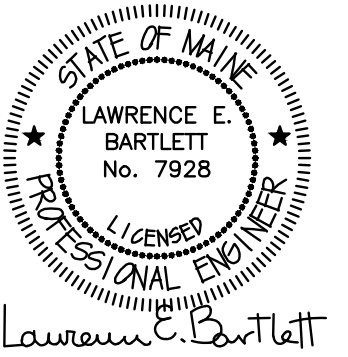


- DRAWING E2.1 NOTES:**
1. VERIFY THE EXACT LOCATION OF ALL MECHANICAL EQUIPMENT PRIOR TO INSTALLATION.
  2. UNLESS SPECIFICALLY NOTED OTHERWISE, ALL DISCONNECT SWITCH SIZES SHALL BE 30A/3P.
  3. UNLESS SPECIFICALLY NOTED OTHERWISE, THE WIRE SIZE FOR ALL 3-PHASE MOTORS SHALL BE 3 #12, 1 #12GND, IN A 3/4" CDT.
  4. UNLESS SPECIFICALLY NOTED OTHERWISE ALL CIRCUIT DESIGNATIONS REFER TO PANEL HP3.
  5. BUILDING MOUNTED LIGHTS ARE TO BE CONTROLLED BY A PHOTOCELL THAT SHALL BE MOUNTED ON THE NORTH SIDE ON THE BUILDING.
  6. NOT USED.
  7. NOT USED.
  8. CIRCUIT CARBON MONOXIDE DETECTORS IN THE GARAGE TO PANEL HP4 #34.
  9. PROVIDE A MANUAL MOTOR STARTER FOR SUMP PUMP LOCATED IN ELEVATOR #2. CIRCUIT PUMP TO PANEL HP4 #38.
  7. WHERE INDICATED BY \*, TYPE FR5 LIGHTS TO OPERATE CONTINUOUSLY. OTHER TYPE FR5 LIGHTS SHALL BE CONTROLLED BY MOTION SENSOR. TYPE FR6 LIGHTS SHALL OPERATE CONTINUOUSLY.
  8. PROVIDE CEILING MOUNTED, LINE VOLTAGE MOTION SENSORS IN CORRIDORS TO CONTROL TYPE FR5 LIGHTS AS INDICATED ABOVE. MOTION SENSORS SHALL BE HUBBELL BUILDING AUTOMATION #C5002000P, OR EQUAL.
  9. PROVIDE A 120V CIRCUIT FOR TRASH COMPACTOR LOCATED IN TRASH ROOM. COORDINATE REQUIREMENTS AND LOCATION WITH OWNER. CIRCUIT TO PANEL HP4 #36.
  10. WHERE INDICATED, PROVIDE EMPTY CONDUIT FROM PANEL HP4 TO JUNCTION BOX LOCATED 24" ABOVE FLOOR SLAB FOR FUTURE CAR LIFT. RUN CONDUIT IN CEILING TRANSITIONING DOWN WALL AND/OR COLUMN.



Corey Electric  
609 Main Street #3  
Westbrook, ME 04092

**Bartlett Design**  
LIGHTING & ELECTRICAL ENGINEERING  
342 WASHINGTON STREET, PORTLAND, ME 04103  
TEL: (207) 443-3447 FAX: (207) 443-5880

THE VILLAGE AT OCEANGate, LLC  
c/o Atlas Investments Group  
35 Fay Street Suite 5-2  
Boston, MA 02118

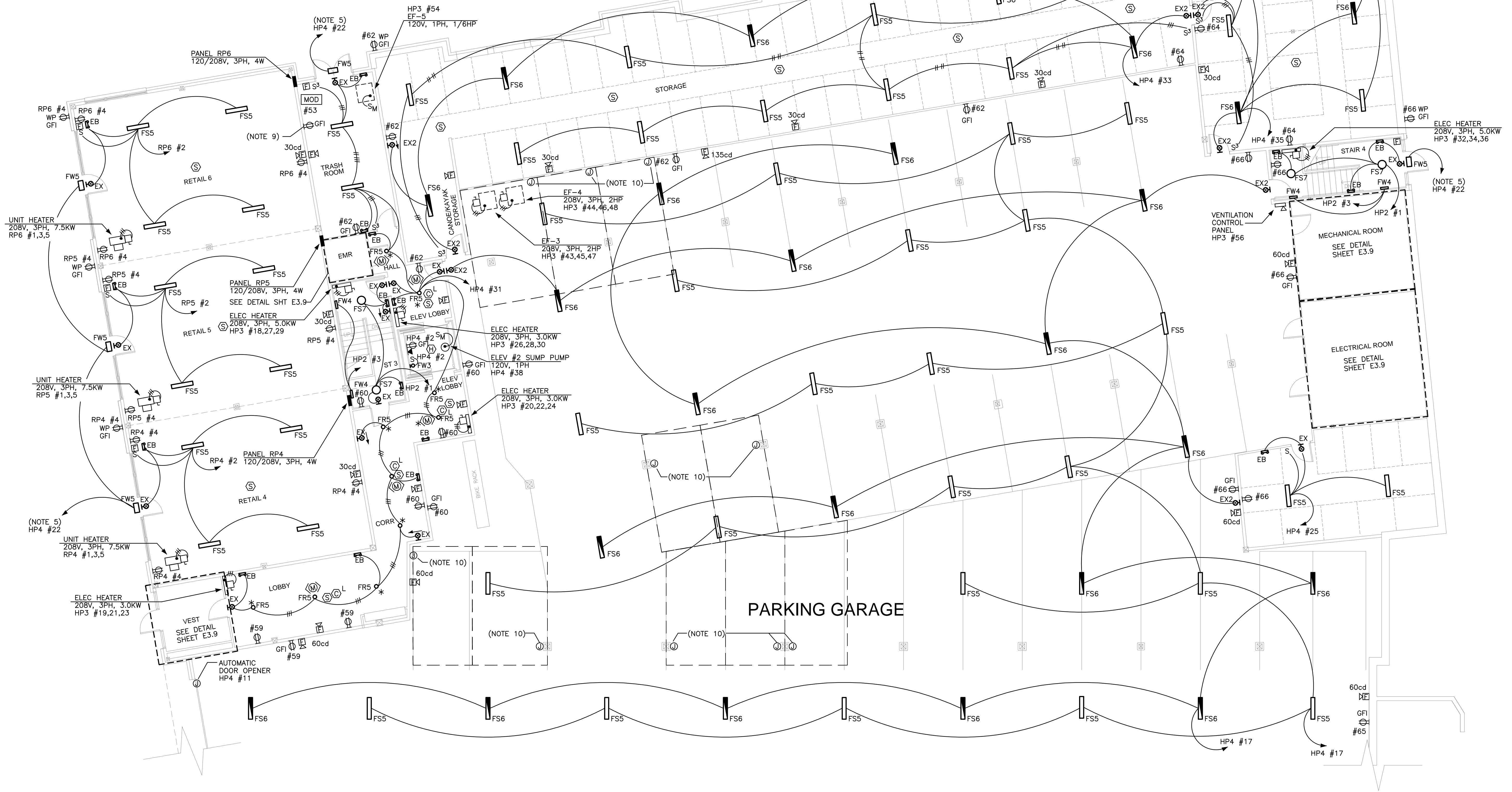
THE BAY HOUSE  
Middle Street  
Portland, Maine

FIRST FLOOR PLAN  
Building 2  
Scale: 1/8" = 1'-0"  
Commission No: 11-013  
Date: February 25, 2013

REVISIONS:

DRG. NO.

E2.1



**BUILDING 2 — FIRST FLOOR PLAN**  
1/8" = 1'-0"