

# **Exhibit 12**

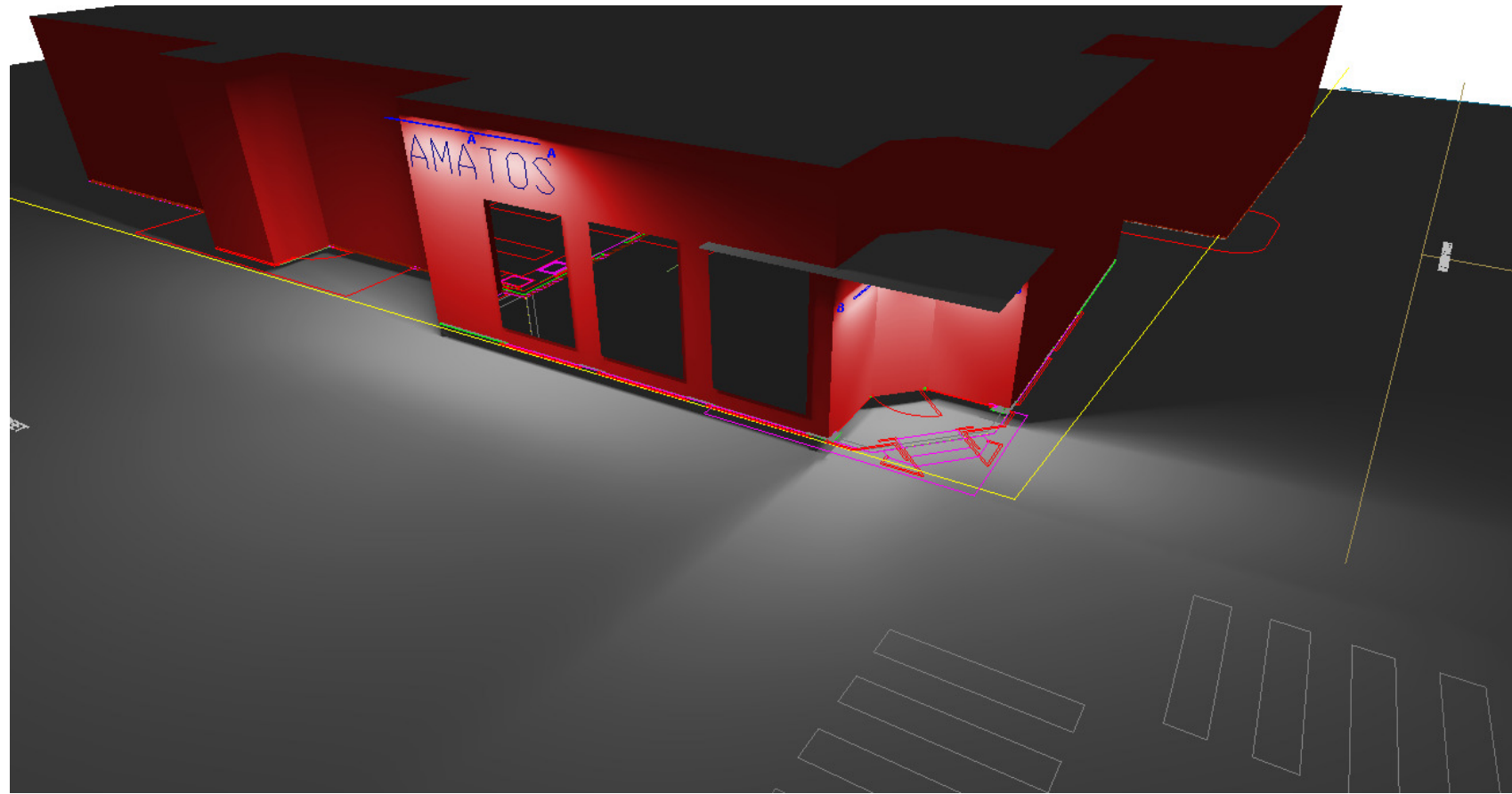
---

# **Lighting Plan**



VISUAL

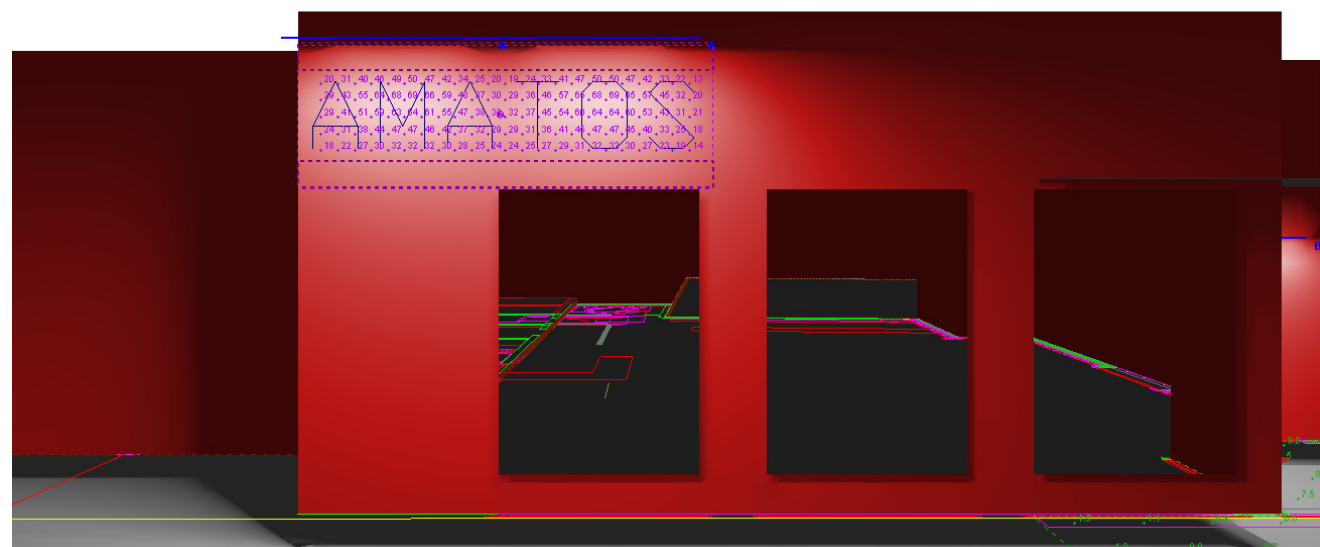
**AMATOS'S SIGN LIGHTING**  
Portland, ME



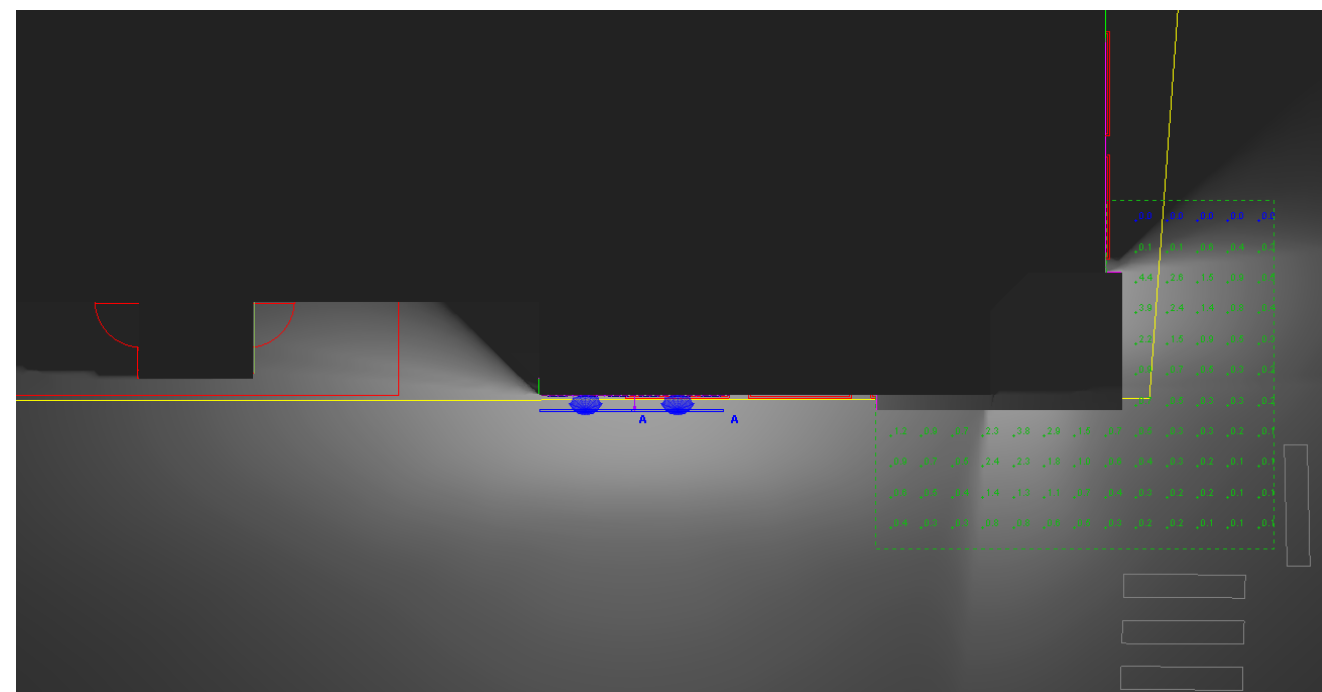
Rendering

Symbol	Label	Quantity	Manufacturer	Catalog Number	Description	Lamp	Number Lamps	Filename	Lumens Per Lamp	Light Loss Factor	Wattage
—	A	2	SPI LIGHTING, INC.	SEWS 063 L19.0WC 35K FT 24VDC 12FT LBK 012 AN08 DML	EXTRUDED FINNED SEMI-DIFFUSE METAL HOUSING WITH FABRICATED GRAY PAINTED METAL END CAPS, 8 CIRCUIT BOARDS EACH WITH 36 LEDs, EXTRUDED PLASTIC REFLECTOR WITH TEXTURED SPECULAR FINISH, EXTRUDED FROSTED PLASTIC DIFFUSER. DIFFUSER FROSTED BOTH SIDES; mounted at 14ft, 1ft from wall	LED	288	6FT STYK FT LED LOW.ies	6.288552	0.9	22.8
	B	2	SPI LIGHTING, INC.	SEWS 051 L15.2WC 35K SMA 24VDC 4FT MCS XFT AN08 DML	EXTRUDED FINNED SEMI-DIFFUSE METAL HOUSING WITH FABRICATED GRAY PAINTED METAL END CAPS, 8 CIRCUIT BOARDS EACH WITH 36 LEDs, EXTRUDED FROSTED PLASTIC DIFFUSER. DIFFUSER FROSTED BOTH SIDES; mounted at 8ft, 6in from wall	LED	288	4FT STYK SMA LED LOW.ies	3.425795	0.9	15.2

Statistics						
Description	Symbol	Avg	Max	Min	Max/Min	Avg/Min
Ground at Corner Entrance	+	1.8 fc	11.9 fc	0.0 fc	N/A	N/A
Sign	+	40 fc	69 fc	13 fc	5.3:1	3.1:1



Sign Light Calcs



Ground Light Calcs

**Designer**  
Heidi G. Connors  
Visible Light, Inc.  
24 Stickney Terrace  
Suite 6  
Hampton, NH 03842  
**Date**  
6/22/2017  
**Scale**  
Not to Scale  
**Drawing No.**

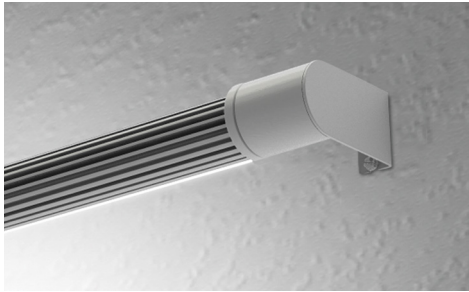
**Summary**

# SEWS Styk Exterior Linear LED Wall

Remote or Integral Power Supply

JOB NAME \_\_\_\_\_

TYPE \_\_\_\_\_

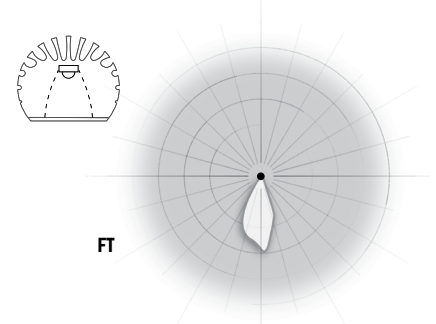


## Styk Exterior Linear LED

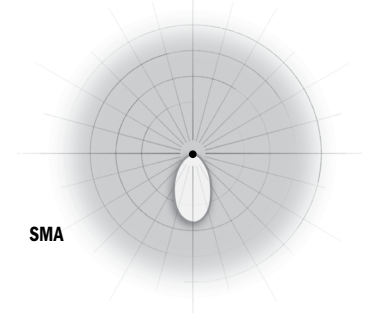
Styk was built to provide the most lumens with the smallest luminaire package, while optimizing life. Not limited to decorative lighting, effective functional lighting is provided through the optimal light control in this minimal package.

Styk boasts three white LED color temperatures, RGB and four color offerings. Styk is a durable interior linear LED fixture. Styk's patent pending optical offerings enable tremendous flexibility offering wall washing, wall grazing, indirect pendants, and asymmetric lighting solutions.

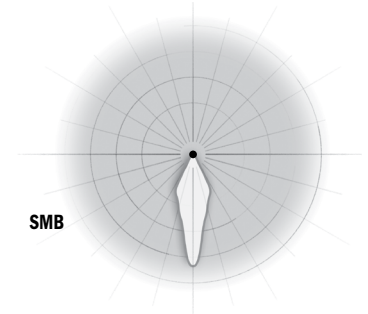
## Optical Distributions



FT



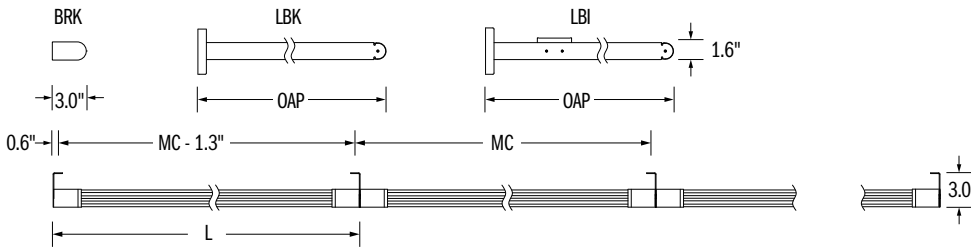
SMA



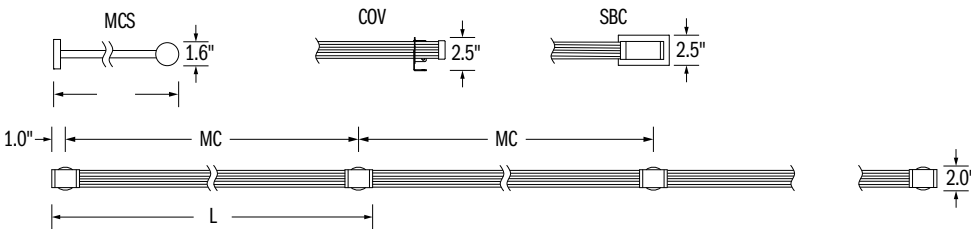
SMB

## Run Sections and Suspensions

**BRK, LBK and LBI Bracket Mount** LBI Includes Bracket with Integral Power Supply



**Mini Canopy and Stem** Also Available with Cove Mount (COV) and Switch-Box and Stem (SBC)



## Dimensions

### Overall length single fixtures

MODULE	MOUNTING CENTER	BRK	LBK/LBI	MCS	COV	SBC
016	16.3"	16.3"	19.1"	20.0"	13.3"	20.2"
028	28.0"	28.0"	30.8"	31.7"	24.8"	32.0"
039	39.8"	39.8"	42.6"	43.5"	36.5"	44.8"
051	51.3"	51.3"	54.1"	55.0"	48.0"	55.3"
063	63.3"	63.3"	66.1"	67.0"	60.0"	67.3"
077	77.0"	77.0"	79.8"	80.7"	72.0"	81.0"
089	89.0"	89.0"	91.8"	92.7"	84.0"	93.0"
101	101.0"	101.0"	103.8"	104.7"	96.0"	105.0"

## Specifications

- IP66 rated fixture per International Electrotechnical Commission (IEC) certifies fixture as dust tight and protected against powerful water jets.
- Available in anodized finishes with some parts painted to match. Anodized finish provides optimal thermal effectiveness and durable corrosion protection.
- Stem mount versions include (2) 5/8" aluminum stem(s) painted to match anodized finish.
- Each module requires connection to a 24V constant voltage power supply. Modules over 60W may require multiple power supplies/feeds.
- Lamp body can be rotated up to 330° for application specific aiming
- SPI Lighting uses strict guidelines in LED selection to ensure the white LEDs we use meet or exceed ANSI Binning Standards (ANSI C78.377).
- Frosted acrylic shield enhances a space with diffused illumination.
- Black power cord standard unless otherwise specified.
- **RELATED LINKS:**  
[LED Power Supplies \(24V DC\)](#)  
["Designed to be LED"](#)

## Technical Notes

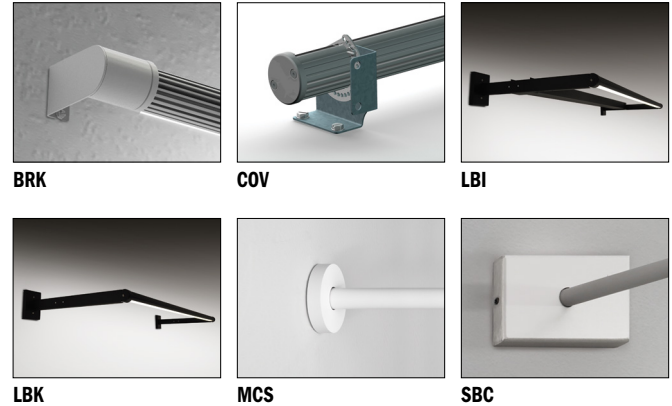
- **INSTALLATION NOTES:** During installation the contractor is responsible to use actual fixtures to ensure accurate mounting centers from one fixture to the next along the length of the linear run.



SERIES	SELECT MODULE	SELECT LIGHT SOURCE		LED	TEMP	LED	SELECT OPTICS	VOLTAGE	LENGTH OF RUN	SELECT MOUNTING	SELECT SUSPENSION	SELECT FINISH	SELECT OPTIONS				
		WHITE	COLOR														
SEWS	016	OR	L3.8WC	30K	B12.8W <sup>2</sup>	Blue	FT <sup>2</sup>	24V DC	YY'	BRK	003 <sup>7,8</sup>	AN04	DML				
			L7.1WC	35K	G12.8W <sup>2</sup>	Green								SMA	COV <sup>9</sup>	AN08	DMX
			L14.3WC	40K	R12.8W <sup>2</sup>	Red								SMB	LBI <sup>4,5,6</sup>		F
					A12.8W <sup>2</sup>	Amber									LBK		PS
					C12.8W <sup>1,2,3</sup>	RGB									MCS		PSE
															SBC		PSN
028	OR	L7.6WC	30K	B25.6W <sup>2</sup>	Blue												
		L14.3WC	35K	G25.6W <sup>2</sup>	Green												
		L28.6WC	40K	R25.6W <sup>2</sup>	Red												
				A25.6W <sup>2</sup>	Amber												
039	OR	L11.4WC	30K	B38.4W <sup>2</sup>	Blue												
		L21.5WC	35K	G38.4W <sup>2</sup>	Green												
		L43.0WC	40K	R38.4W <sup>2</sup>	Red												
				A38.4W <sup>2</sup>	Amber												
051	OR	L15.2WC	30K	B51.2W <sup>2</sup>	Blue												
		L28.6WC	35K	G51.2W <sup>2</sup>	Green												
		L57.3WC	40K	R51.2W <sup>2</sup>	Red												
				A51.2W <sup>2</sup>	Amber												
063	OR	L19.0WC	30K	B64.0W <sup>2</sup>	Blue												
		L35.8WC	35K	G64.0W <sup>2</sup>	Green												
		L71.6WC	40K	R64.0W <sup>2</sup>	Red												
				A64.0W <sup>2</sup>	Amber												
077	OR	L22.8WC	30K	B76.8W <sup>2</sup>	Blue												
		L43.0WC	35K	G76.8W <sup>2</sup>	Green												
		L86.0WC	40K	R76.8W <sup>2</sup>	Red												
				A76.8W <sup>2</sup>	Amber												
089	OR	L26.6WC	30K	B89.6W <sup>2</sup>	Blue												
		L50.1WC	35K	G89.6W <sup>2</sup>	Green												
		L100.3WC <sup>3</sup>	40K	R89.6W <sup>2</sup>	Red												
				A89.6W <sup>2</sup>	Amber												
101	OR	L30.4WC	30K	B102.4W <sup>2</sup>	Blue												
		L57.3WC	35K	G102.4W <sup>2</sup>	Green												
		L114.6WC <sup>3</sup>	40K	R102.4W <sup>2</sup>	Red												
				A102.4W <sup>2</sup>	Amber												
				C102.4W <sup>1,2,3</sup>	RGB												

<sup>1</sup> Not available with LBI.  
<sup>2</sup> Color LED not available with the FT optic.  
<sup>3</sup> Two cords on one side. (RGB)  
<sup>4</sup> Wet listed, but does not include IP66. (LBI)  
<sup>5</sup> 120-277V (LBI)  
<sup>6</sup> Not suitable for ground mounting (LBI)  
<sup>7</sup> BRK only. (3")  
<sup>8</sup> LBI not available. (6"/3")  
<sup>9</sup> 003 projection only. (COV)

**Mountings and Options**



**Code Definitions**

**OPTICS**

- SMA** Symmetric 60° Beam - 120° Spread
- SMB** Symmetric 30° Beam - 60° Spread
- FT** Forward Throw

**MOUNTING**

- BRK** 3" Bracket Mount
- COV** Cove Mount
- MCS** 2" Mini Canopy and Stem
- LBI** Bracket with Integral Power Supply
- LBK** Fixed Bracket
- SBC** Switch-Box Cover and Stem

**PROJECTION**

- 003<sup>4</sup>** 3.0" (BRK only) <sup>2,7,8</sup>
- 006** 6.0" <sup>2,8</sup>
- 012** 12.0"
- 018** 18.0"

**FINISHES** (See Color Chart for Details)

- AN04** Anodized Aluminum (Clear)
- AN08** Black Anodized

**OPTIONS**

- DML** 0-10V Dimming
- F** Fusing
- DMX** 100W DMX/DA04 4 Control Channels 4 LED Outputs
- PS** Remote Power Supply
- PSE** Power Supply Enclosure
- PSN** No Power Supply

**LED lighting facts**  
A Program of the U.S. DOE

Light Output (Lumens)	4325
Watts	54.4
Lumens per Watt (Efficacy)	79
Color Accuracy Color Rendering Index (CRI)	83
Light Color Correlated Color Temperature (CCT)	3553 (Bright White)
Warranty**	Yes

All results, except LED Lumen Maintenance, are according to IESNA LM-79-2008 Approval Method for the Electrical and Photometric Testing of Solid-State Lighting. The U.S. Department of Energy (DOE) verifies product test data and results.

\*\* See www.lightingfacts.com/products for details.

Registration Number: 2KZT-YPBKGC (12/19/2012)  
 Model Number: Style FT  
 Type: Other