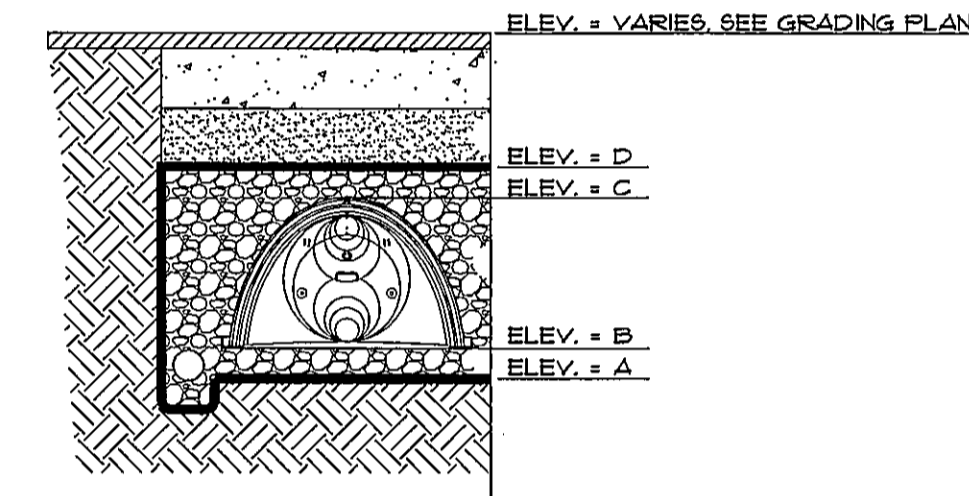


- NOTES:**
1. ALL DESIGN SPECIFICATIONS FOR STORMTECH CHAMBERS SHALL BE IN ACCORDANCE WITH THE STORMTECH DESIGN MANUAL.
  2. THE INSTALLATION OF STORMTECH CHAMBERS SHALL BE IN ACCORDANCE WITH THE LATEST STORMTECH INSTALLATION INSTRUCTIONS.
  3. THE CONTRACTOR IS ADVISED TO REVIEW AND UNDERSTAND THE INSTALLATION INSTRUCTIONS PRIOR TO BEGINNING SYSTEM INSTALLATION. CALL 1-888-892-2694 OR VISIT WWW.STORMTECH.COM TO RECEIVE A COPY OF THE LATEST STORMTECH INSTALLATION INSTRUCTIONS.
  4. CONTACT DESIGN ENGINEER PRIOR TO INSTALLATION OF UNDERDRAIN AND STORMTECH SYSTEM.

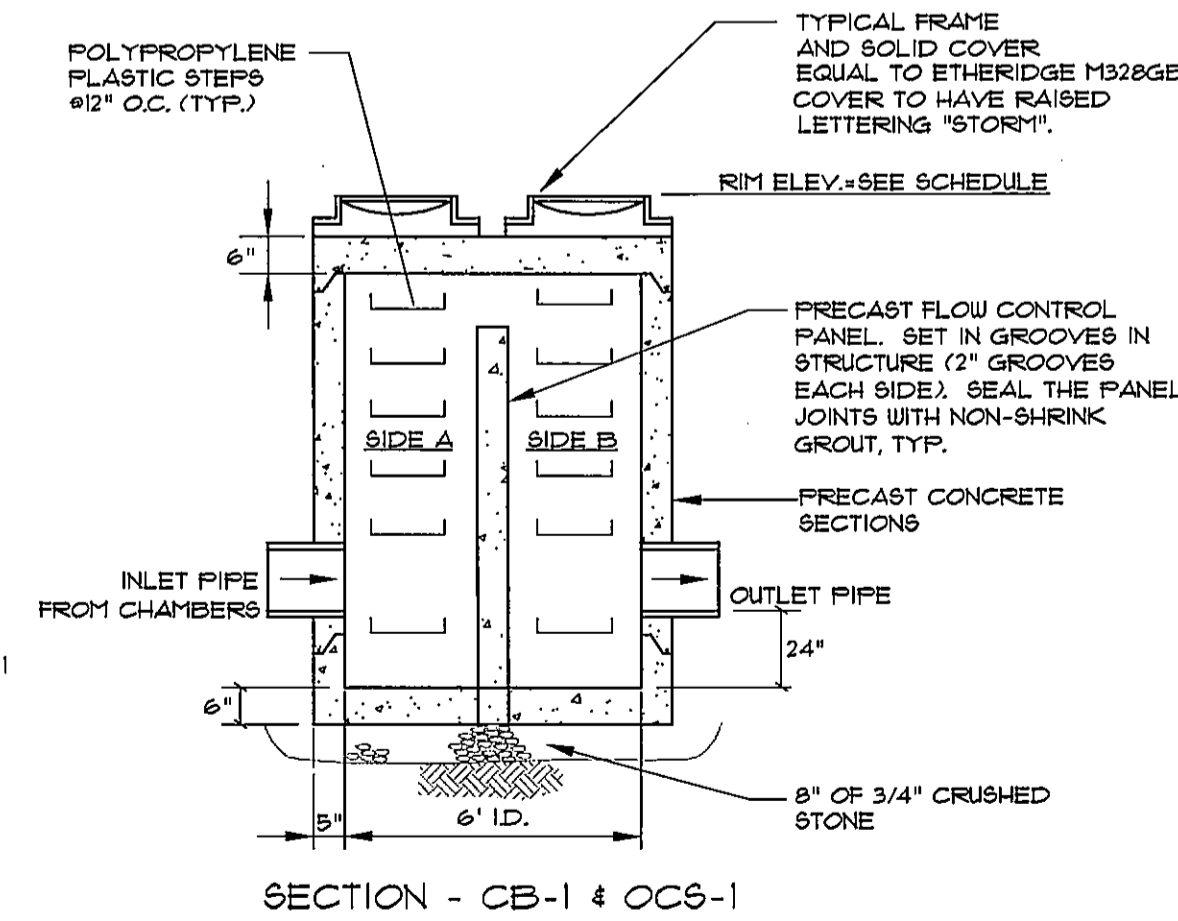
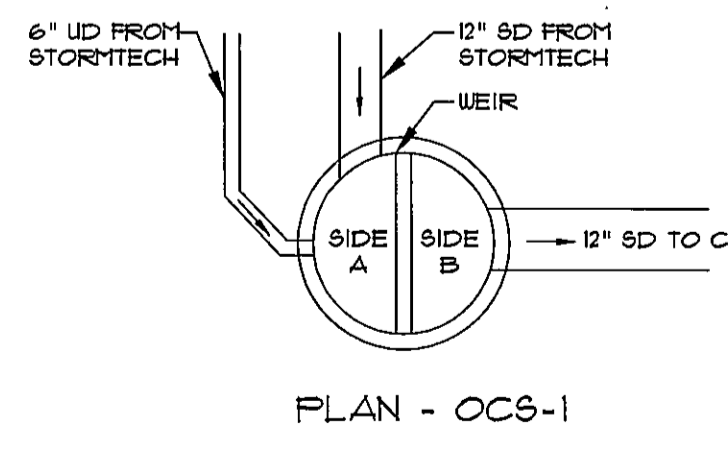
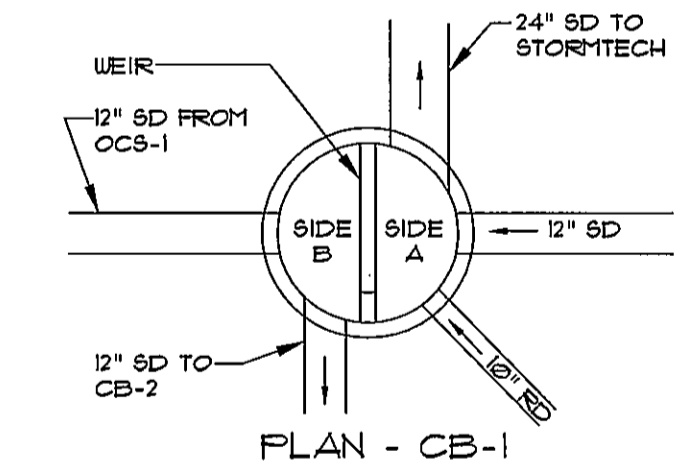
**STORMTECH SC-140 CHAMBER SYSTEM  
OPTIONAL INSPECTION PORT DETAIL**  
NOT TO SCALE



STORMTECH ELEVATIONS				
ST-1	A	B	C	D
	34.05	34.55	37.05	37.55

NOTE: ELEV. A IS THE ELEVATION OF THE BOTTOM OF STONE AND THE INVERT OF THE 6" UNDERDRAIN

**STORMTECH SC-140 CHAMBER SYSTEM**  
NOT TO SCALE

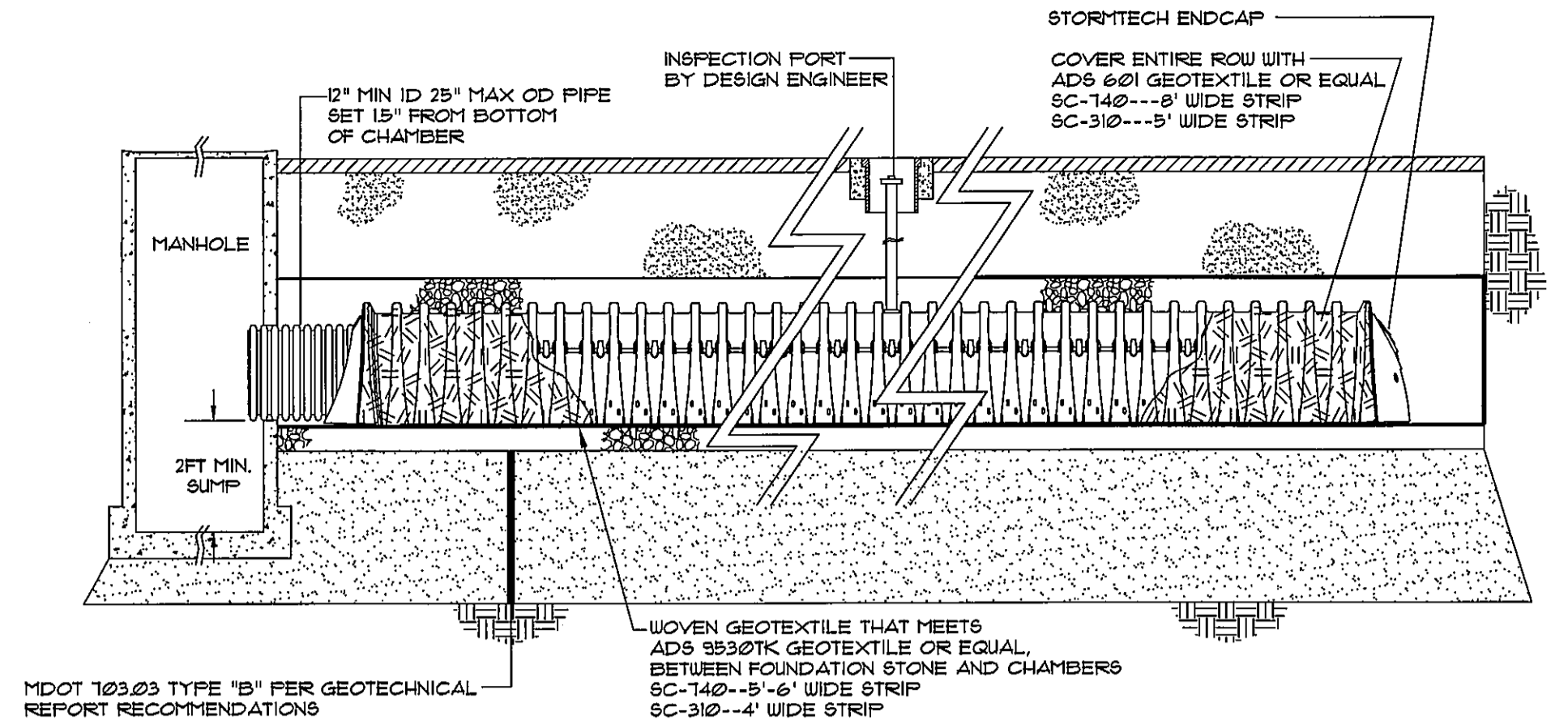


**OUTLET CONTROL STRUCTURE (OCS) FOR ST-1**  
NOT TO SCALE

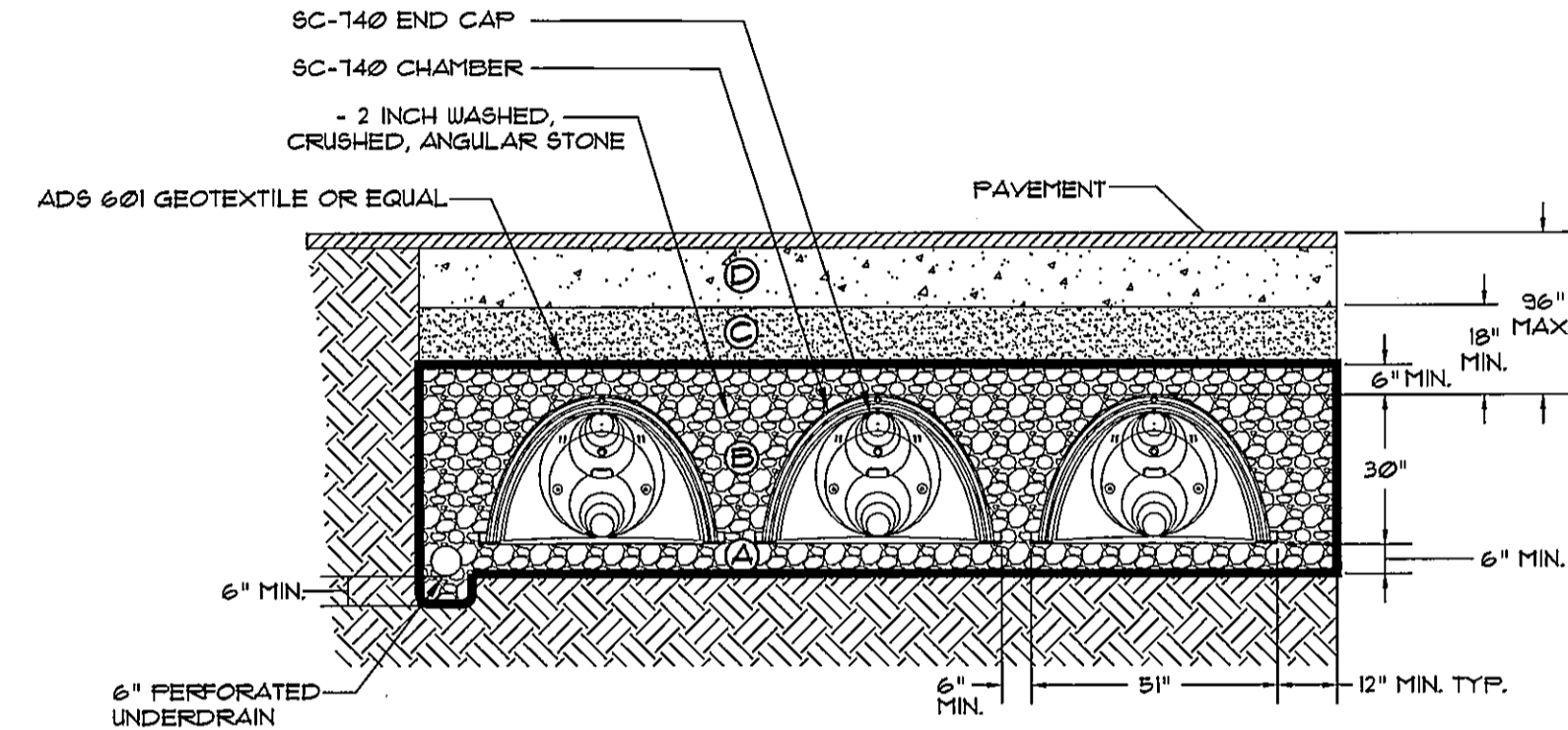
- NOTE:  
1. SUBMIT SHOP DRAWINGS FOR OWNER/ENGINEER APPROVAL.  
2. STRUCTURE SHALL BE DESIGNED FOR H-20 LOADING.

**OUTLET CONTROL STRUCTURE SCHEDULE**

RIM ELEV.	SIDE A INV. IN	SIDE A INV. OUT	SIDE B INV. IN	SIDE B INV. OUT	WEIR ELEV.	
CB-1	33.15	34.80 (12"SD) 35.00 (10"RD) TO STORMTECH	34.70 (24"SD)	33.75 (12"SD)	33.50 (12"SD)	37.00
OCS-1	33.55	34.05 (6"UD) 34.40 (12"SD)	34.05 6" OFFICE	33.90 (12"SD)	36.50	



**STORMTECH ISOLATOR TM ROW PROFILE VIEW DETAIL**  
NOT TO SCALE

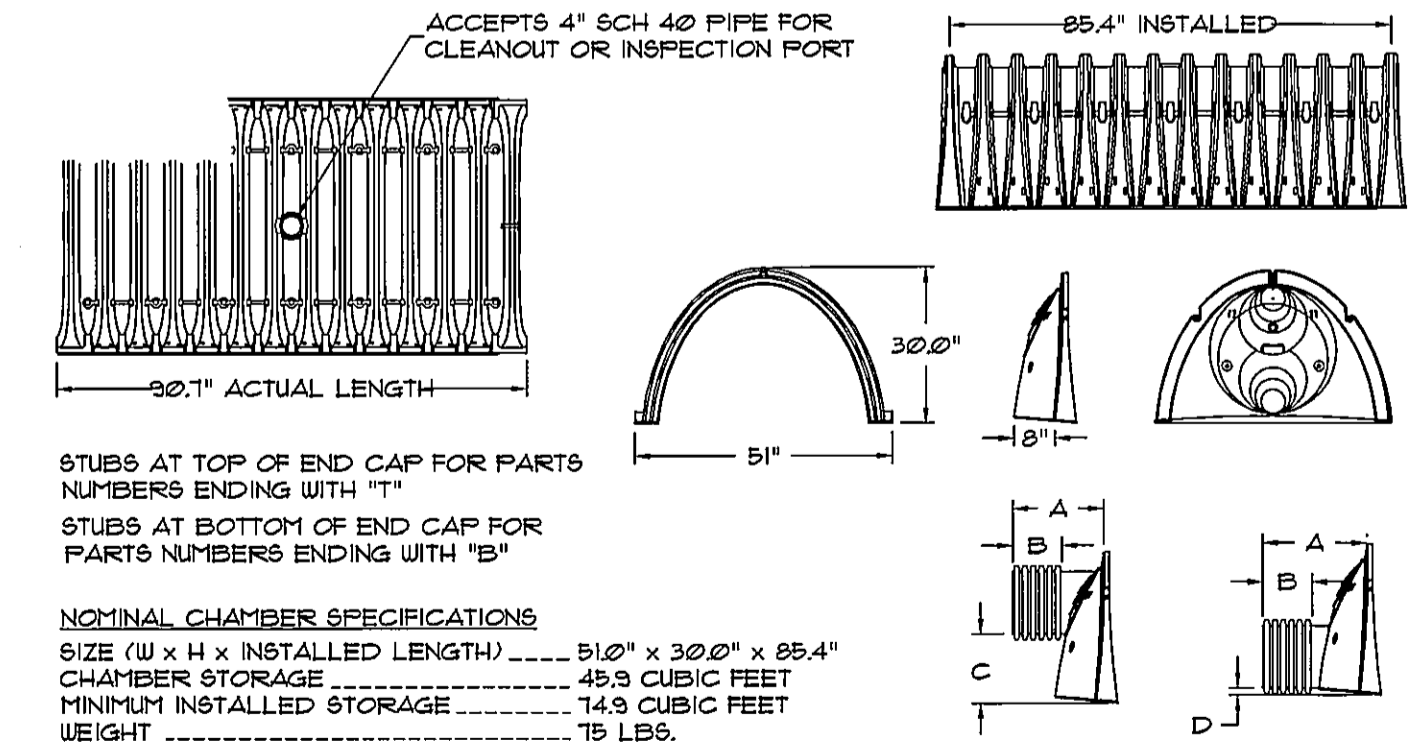


- COMPACTION/DENSITY REQUIREMENTS:
- A. WASHED, ANGULAR STONE WITH THE MAJORITY OF PARTICLES BETWEEN 3/4" - 2". FLATE COMPACT OR ROLL TO ACHIEVE A 95% STANDARD PROCTOR DENSITY.
  - B. WASHED, ANGULAR STONE WITH THE MAJORITY OF PARTICLES BETWEEN 3/4" - 2". NO COMPACTION REQUIRED.
  - C. GRANULAR WELL-GRADED SOIL/AGGREGATE MIXTURES <35% FINES. COMPACT IN 6" LIFTS TO A MINIMUM 95% STANDARD PROCTOR DENSITY. ROLLER GROSS VEHICLE WEIGHT NOT TO EXCEED 10,000 POUNDS.
  - D. ANY SOIL/ROCK MATERIALS, NATIVE SOILS OR PER ENGINEER'S PLANS. CHECK PLANS FOR PAVEMENT SUBGRADE REQUIREMENTS. PREPARE PER ENGINEER'S PLANS.

**MEDOT SPECIFICATIONS FOR UNDERDRAINS (MEDOT #103.22)**

SIEVE SIZE	% BY WEIGHT
UNDERDRAIN TYPE B	
1"	90-100
1/2"	75-100
3/4"	50-100
20	15-80
40	0-5
100	0-5
UNDERDRAIN TYPE C	
1"	100
3/4"	90-100
3/8"	0-15
4	0-25
10	0-5
	3/4

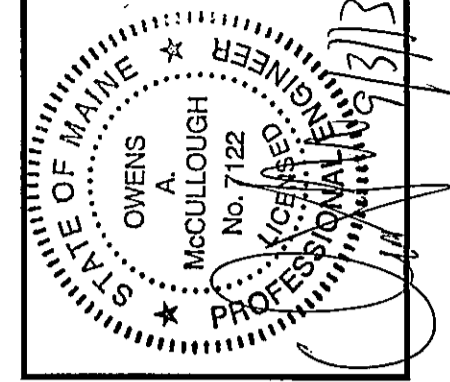
**STORMTECH SC-140 CHAMBER SYSTEM  
TYPICAL CROSS SECTION DETAIL**  
NOT TO SCALE



PART #	CHAMBER	PIPE SIZE	A	B	C	D
SC140EFE12B	SC 140	15 in (375 mm)	19.30 in (490 mm)	10.30 in (262 mm)	10.5	26.1 in (30 mm)
SC140EFE24B	SC 140	24 in (600 mm)	18.50 in (470 mm)	9.45 in (240 mm)	N/A	20.10 in (3 mm)

- NOTE: ALL DIMENSIONS ARE NOMINAL  
ALL STUBS, EXCEPT FOR THE SC310EFE12B AND SC140EFE24B ARE PLACED AT BOTTOM OF END CAP SUCH THAT THE OUTSIDE DIAMETER OF THE STUB IS FLUSH WITH THE BOTTOM OF THE END CAP.  
\* FOR THE SC310EFE12B THE 12" STUB LIES BELOW THE BOTTOM OF THE END CAP APPROXIMATELY @25". FOR THE SC140EFE24B THE 24" STUB LIES BELOW THE BOTTOM OF THE END CAP APPROXIMATELY 115". BACKFILL MATERIAL SHOULD BE REMOVED FROM BELOW THE N-12 STUB SO THAT THE FITTING SETS LEVEL.

**STORMTECH SC-140 CHAMBER  
TECHNICAL SPECIFICATIONS**  
NOT TO SCALE



CITY SUBMITTAL 3	05-03-13	WTC	BY:	DATE:
SUBMIT SITE PLAN APPLICATION TO CITY	07-25-13	WTC	BY:	DATE:
STATUS:		WTC	BY:	DATE:

THIS PLAN SHALL NOT BE MODIFIED WITHOUT WRITTEN PERMISSION FROM SEBAGO TECHNICS, INC. ANY ALTERATIONS, AUTHORIZED OR OTHERWISE, SHALL BE AT THE USER'S SOLE RISK AND WITHOUT LIABILITY TO SEBAGO TECHNICS, INC.

**SEBAGO TECHNICS**  
WWW.SEAGOTECHNICS.COM  
75 South Berwick Road, Suite B  
Berwick, Maine 04915  
Tel: 207-202-2100  
Tel: 207-783-5555

PROJECT NO. FIELD BOOK DESIGN CHKD DRAWN  
13251 WTC WTC

**DETAILS**  
OF:  
**SEAPORT LOFTS**  
NEWBURY / HANGCOCK STREET  
PORTLAND, MAINE  
FOR:  
**113 NEWBURY STREET, LLC**  
35 FAY STREET, SUITE 107B  
BOSTON, MA 02118-4320

DATE: 07-26-13  
SCALE: AS SHOWN

SHEET 13 OF 13