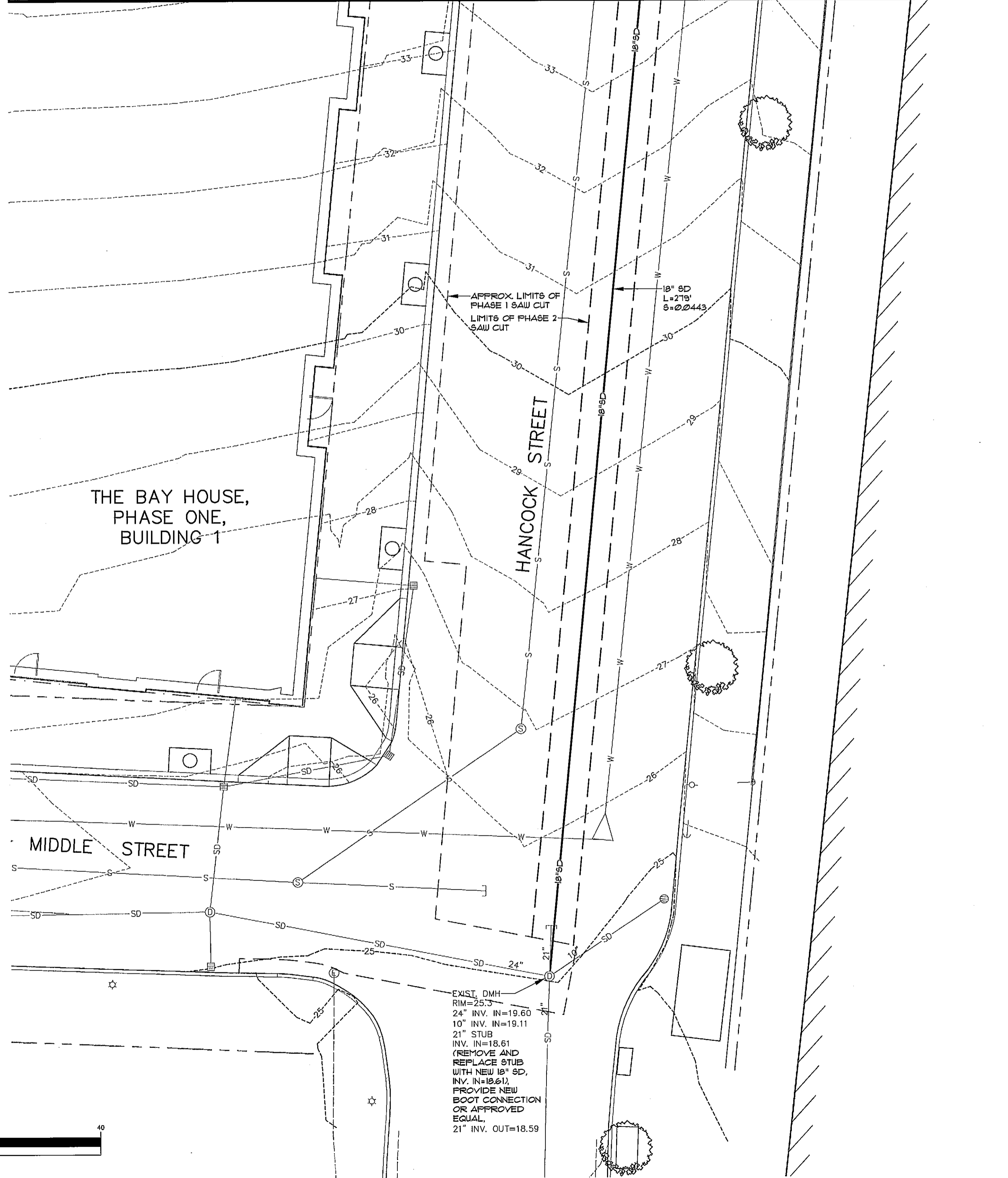
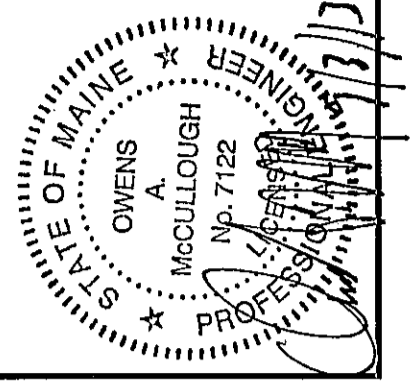
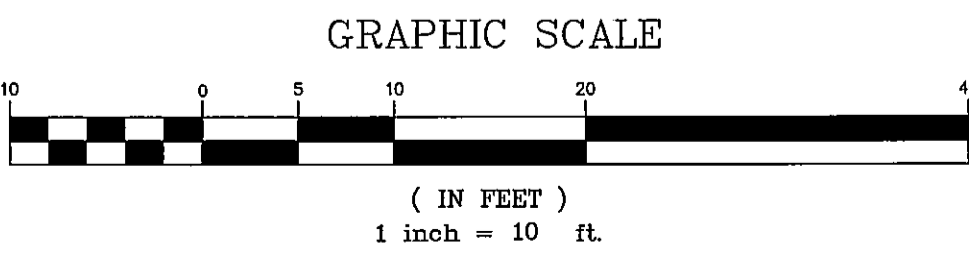
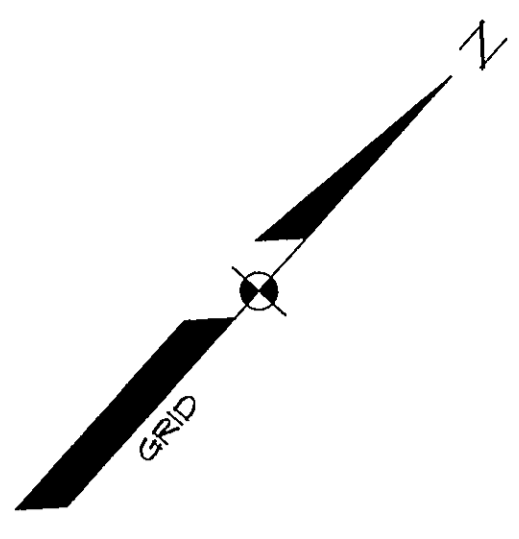


MATCHLINE LEFT

MATCHLINE RIGHT



LEGEND			LEGEND		
EXISTING	DESCRIPTION	PROPOSED	EXISTING	DESCRIPTION	PROPOSED
---	BOUNDARY LINE/ROW	---	⊗	WATER GATE VALVE	⊗
---	SETBACK	---	⊗	WATER SHUT OFF	⊗
---	SEWER	---	⊗	HYDRANT	⊗
---	BUILDING	---	⊗	SEWER	⊗
---	SIGN	---	⊗	SEWER MH	⊗
---	EDGE PAVEMENT	---	⊗	STORM DRAIN	⊗
---	EDGE CONCRETE	---	⊗	ROOF DRAIN	⊗
---	CURBLINE	---	⊗	CATCH BASIN	⊗
---	CONTOURS	---	⊗	DRAINAGE MH	⊗
---	SPOT GRADE	---	⊗	OVERHEAD UTILITY	⊗
---	SCREEN FENCING	---	⊗	UNDERGROUND UTILITY	⊗
---	RETAINING WALL	---	⊗	TRANSFORMER PAD	⊗
⊗	DECIDUOUS TREE	⊗	⊗	ELECTRICAL MANHOLE	⊗
⊗	CONIFEROUS TREE	⊗	⊗	LIGHT POLE/WALL	⊗
⊗	GAS	⊗	⊗	UTILITY POLE	⊗
⊗	WATER	⊗	⊗	GUY	⊗



09-03-13	WTC	BY:	DATE:	07-29-13
B	REV:	BY:	DATE:	
A	REV:	BY:	DATE:	

CITY SUBMITTAL 3
SUBMIT SITE PLAN APPLICATION TO CITY
STATUS:

SEBAGO TECHNICS
WWW.SEBAGOTECHNICS.COM
75 John Roberts Rd. - Suite 1A
Seabrook, NH 03088
Tel: 603-883-8888

PROJECT NO. 13251 | FIELD BOOK | DESIGN | C.HKD | WTC | DRAWN | MAL

OFF-SITE DRAINAGE PLAN
OF:
SEAPORT LOFTS
NEWBURY / HANCOCK STREET
PORTLAND, MAINE
FOR:
113 NEWBURY STREET, LLC
35 FAY STREET, SUITE 107B
BOSTON, MA 02118-4320

DATE	SCALE
07-26-13	1" = 10'