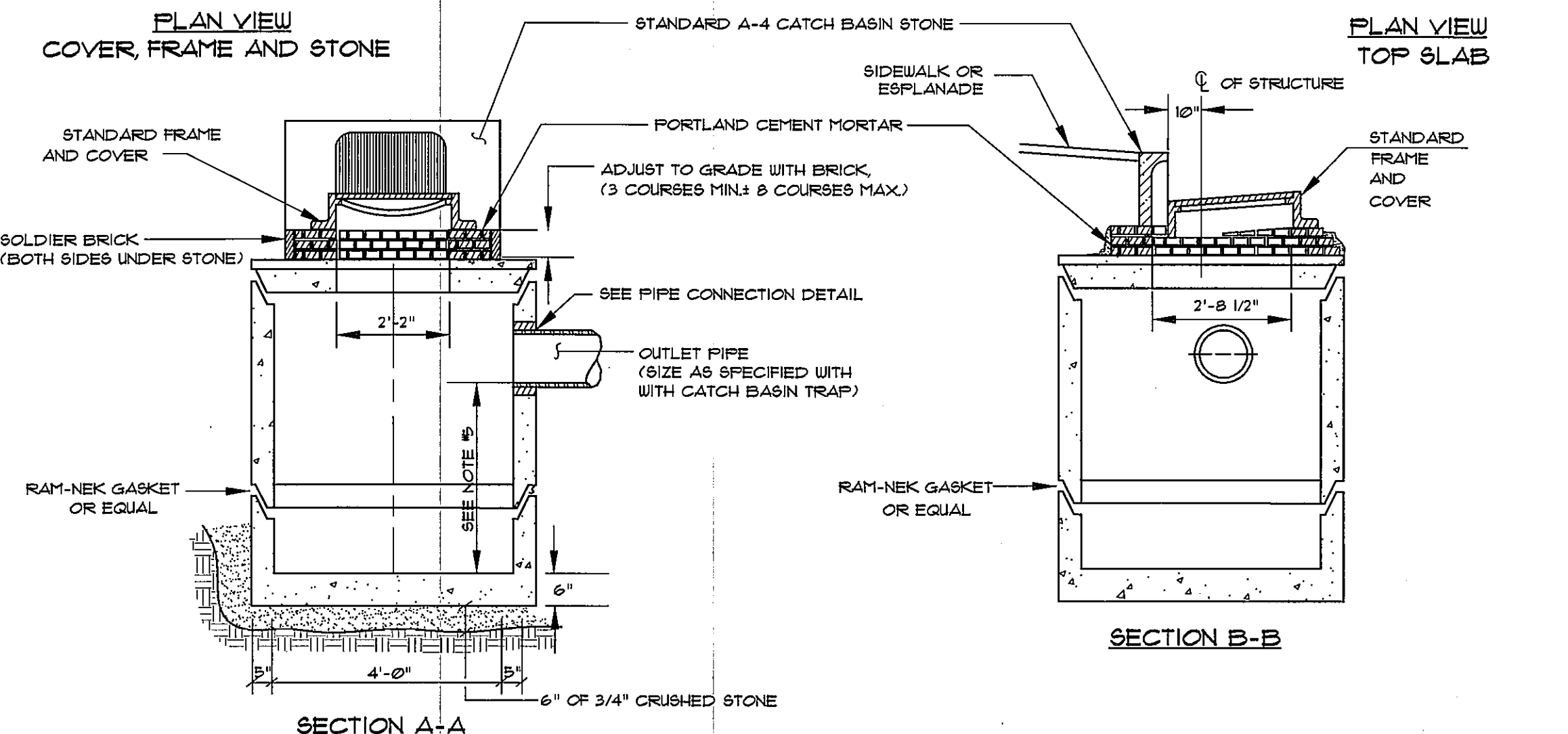
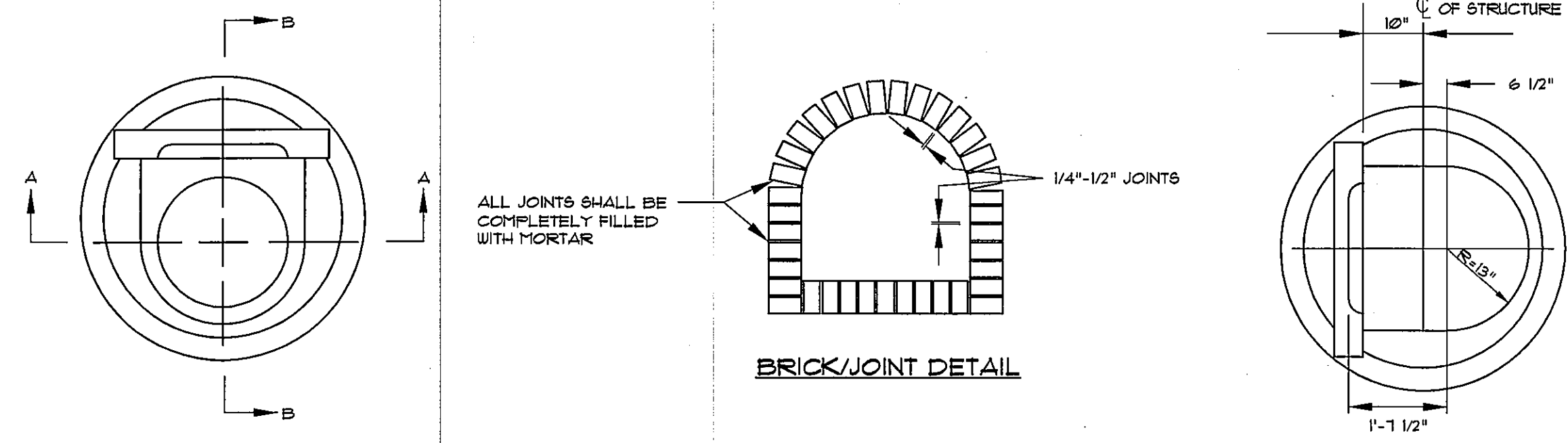
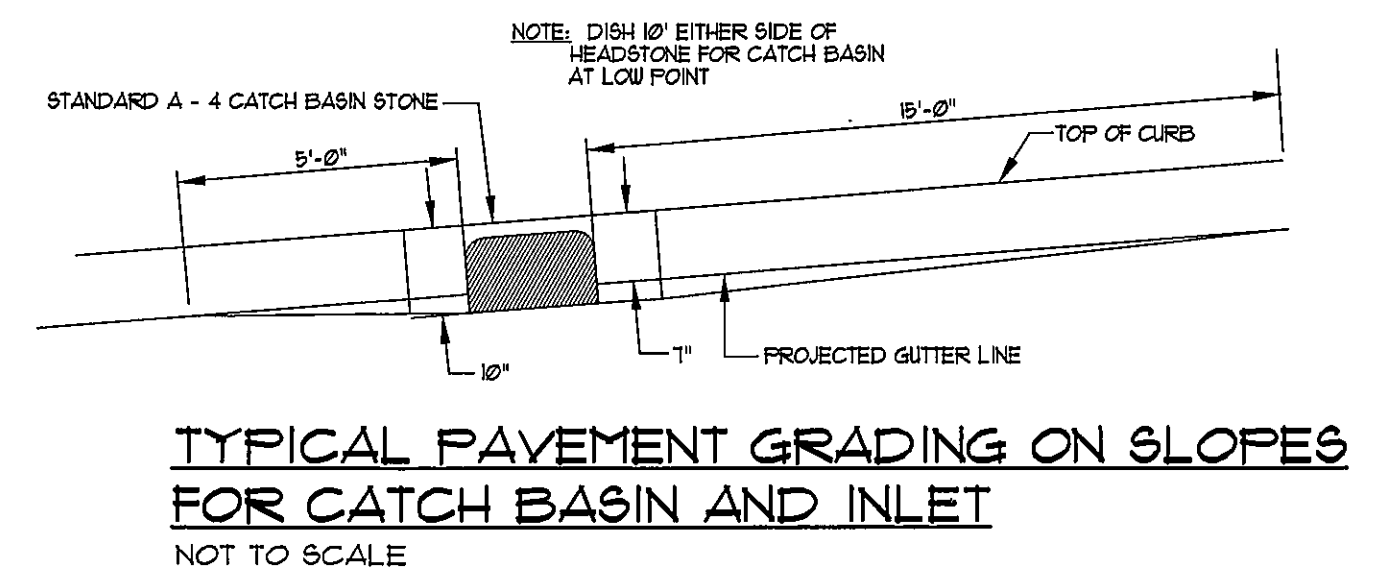


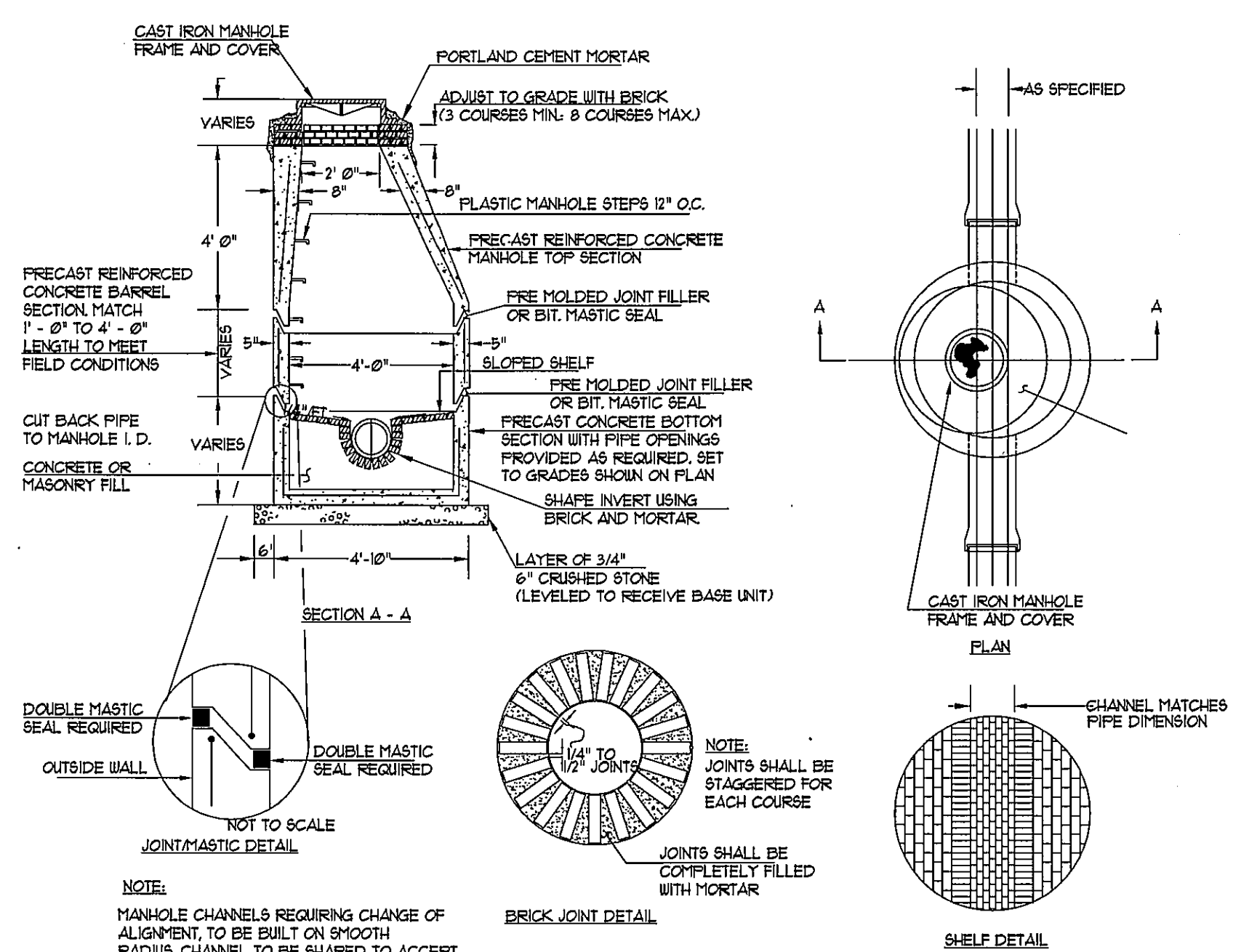
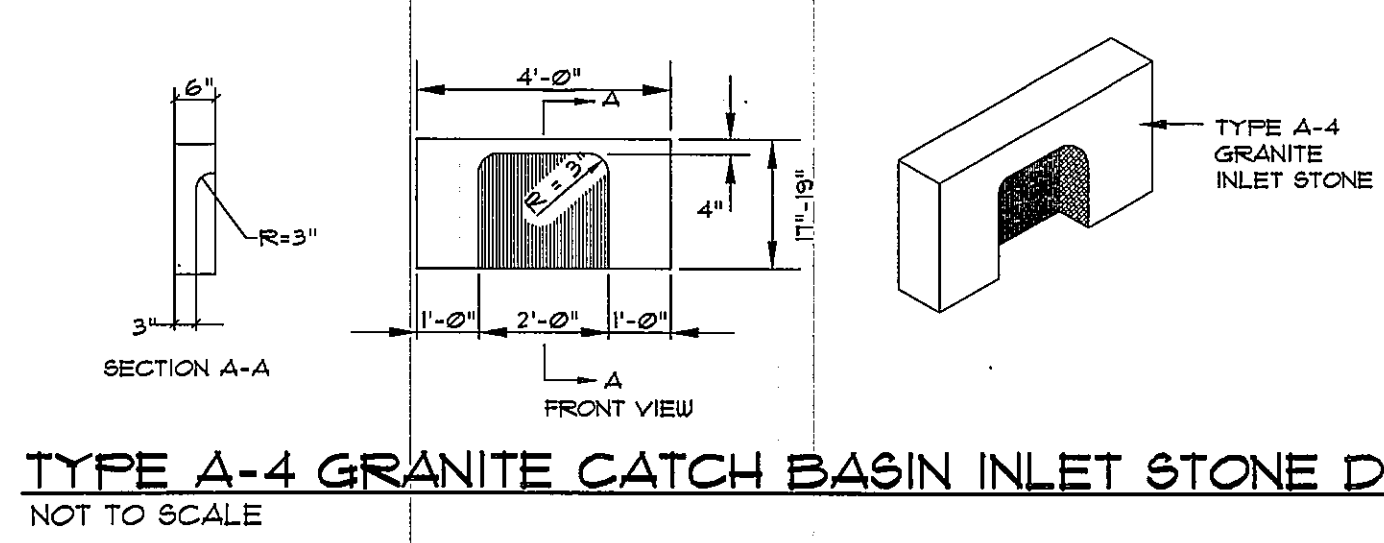
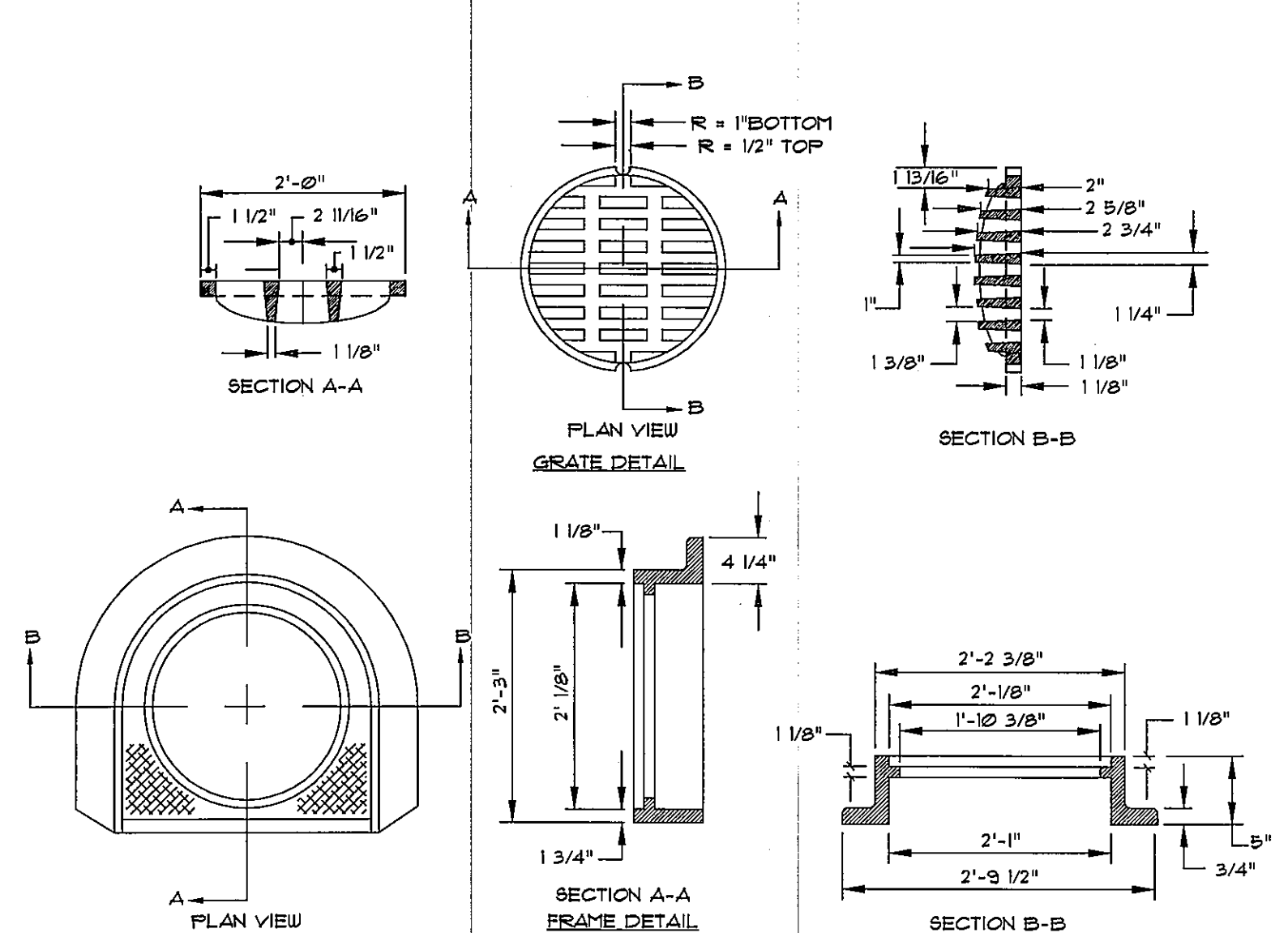
GENERAL NOTES FOR MANHOLES AND CATCH BASINS

- ALL CONCRETE SHALL BE CLASS "A" AND HAVE A MINIMUM ULTIMATE COMPRESSIVE STRENGTH OF 4800-154 P.S.I. PER SQ. INCH AT THE END OF 28 DAYS, UNLESS OTHERWISE NOTED.
- PRECAST REINFORCED CONCRETE BARREL MANUFACTURED PER ASTM SPEC. C-419-07.
- SEWER BRICK SHALL CONFORM TO ASTM SPEC. DESIGNATE ON C-32-63, GRADE MA AND SA.
- ALL MANHOLES SHALL HAVE A BITUMINOUS WATERPROOFING APPLIED TO THE EXTERIOR SURFACE. IF CONSTRUCTED OF BRICK MASONRY, SURFACE SHALL BE FLASTERED WITH A SMOOTH MORTAR FINISH 3/8" THICK. AFTER THE MORTAR HAS SET, THE SURFACE SHALL BE WATERPROOFED AS REQUIRED BY SUPPLEMENTAL SPECIFICATIONS SECTION 604.
- CASTINGS SHALL CONFORM TO ASTM DESIGNATION A49-CLASS 35. ALL PARTS OF CASTINGS, EXCEPT FINISHED SURFACE, SHALL RECEIVE A COAT OF COAL TAR PITCH VARNISH OR ASPHALTUM PAINT WHICH SHALL BE SMOOTH AND TOUGH BUT NOT BRITTLE.
- MANHOLES MAY BE CONSTRUCTED OF MASONRY, PRECAST REINFORCED CONCRETE, OR CAST IN PLACE.
- ALL PRECAST MANHOLES AND CATCH BASINS SHALL BE IDENTIFIED BY STATION AND OFFSET, PAINTED ON THE SIDE OF THE STRUCTURE BY THE MANUFACTURER.
- EXISTING MANHOLES, CATCH BASINS, FRAMES, AND COVERS SHALL BE SALVAGED BY THE CONTRACTOR AND SHALL REMAIN THE PROPERTY OF THE CITY OF PORTLAND.
- ALL WORK WITHIN THE STREET RIGHT-OF-WAY SHALL CONFORM TO THE CITY OF PORTLAND TECHNICAL MANUAL STANDARDS.
- ALL CATCH BASIN OUTLET PIPES SHALL BE INSTALLED WITH AN OIL AND FLOATABLES SEPARATOR. THE SEPARATOR SHALL BE THE "SNOUT" OR AN APPROVED EQUAL AND INSTALLED IN ACCORDANCE WITH MANUFACTURER'S RECOMMENDATIONS.
- MANHOLE FRAME, GRATE AND COVERS SHALL COMPLY WITH CITY OF PORTLAND TECHNICAL STANDARDS AND REQUIREMENTS.

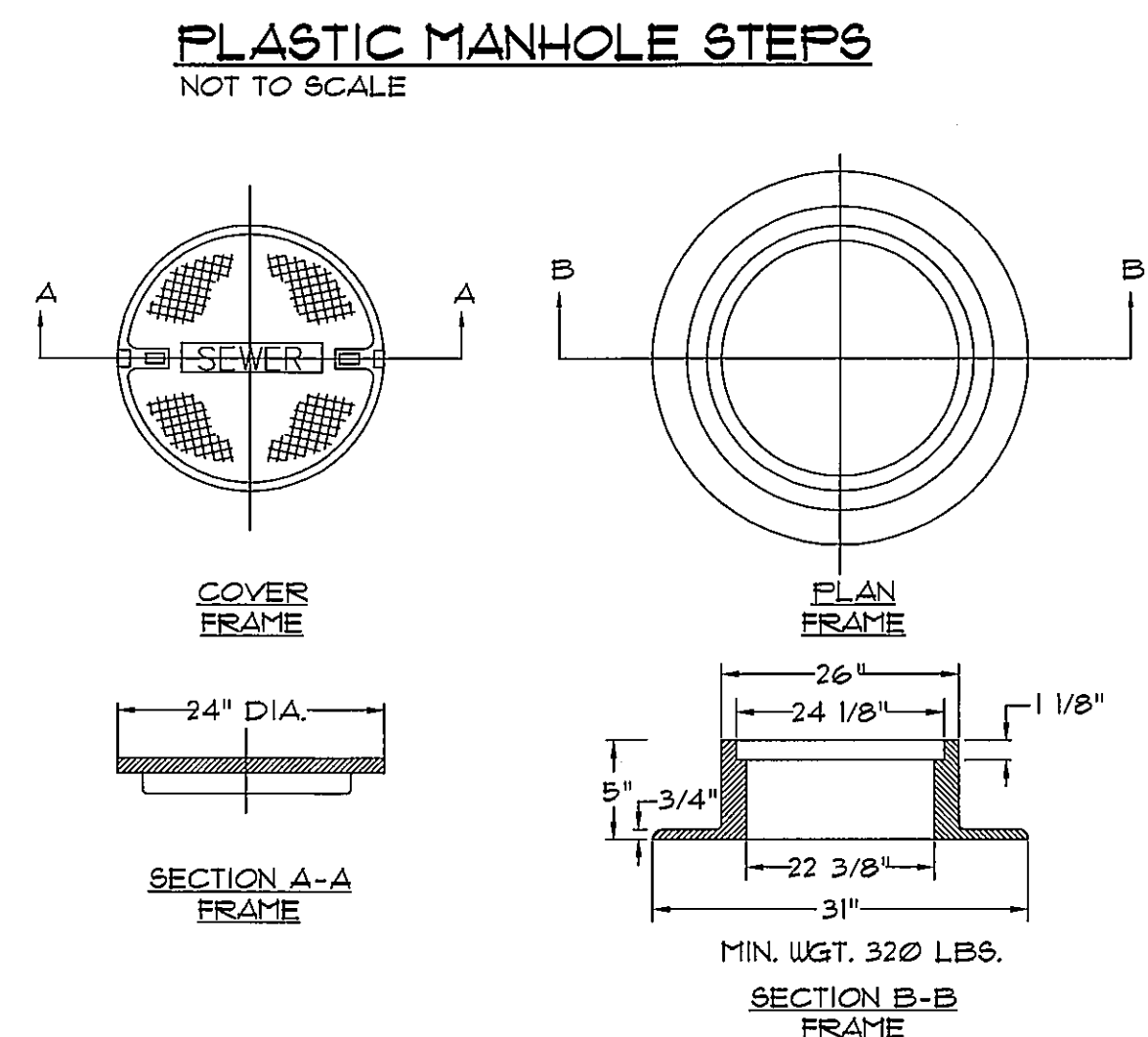
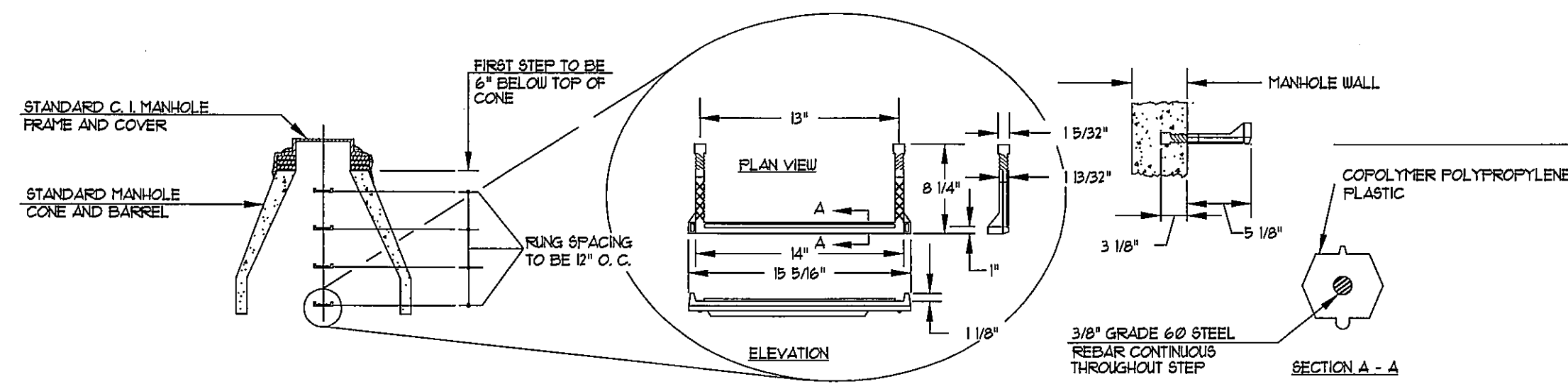


- NOTES:**
- 4'-0" I.D. TYPICAL. SOME STRUCTURES MAY REQUIRE LARGER I.D. PROVIDE SHOP DRAWINGS FOR APPROVAL.
 - DRAINAGE STRUCTURES TO BE DESIGNED FOR H-20 LOADING.
 - PIPE SIZES AND INVERTS AS NOTED ON PLANS.
 - CATCH BASIN FRAME AND GRATE TO ACCOMMODATE 2" MIN. GRATE (H-20 LOADING & BICYCLE SAFE). PROVIDE SHOP DRAWINGS FOR ENGINEER'S / OWNER REPRESENTATIVE'S APPROVAL.
 - ALL CATCH BASIN SUMPS SHALL BE 3' IN DEPTH.

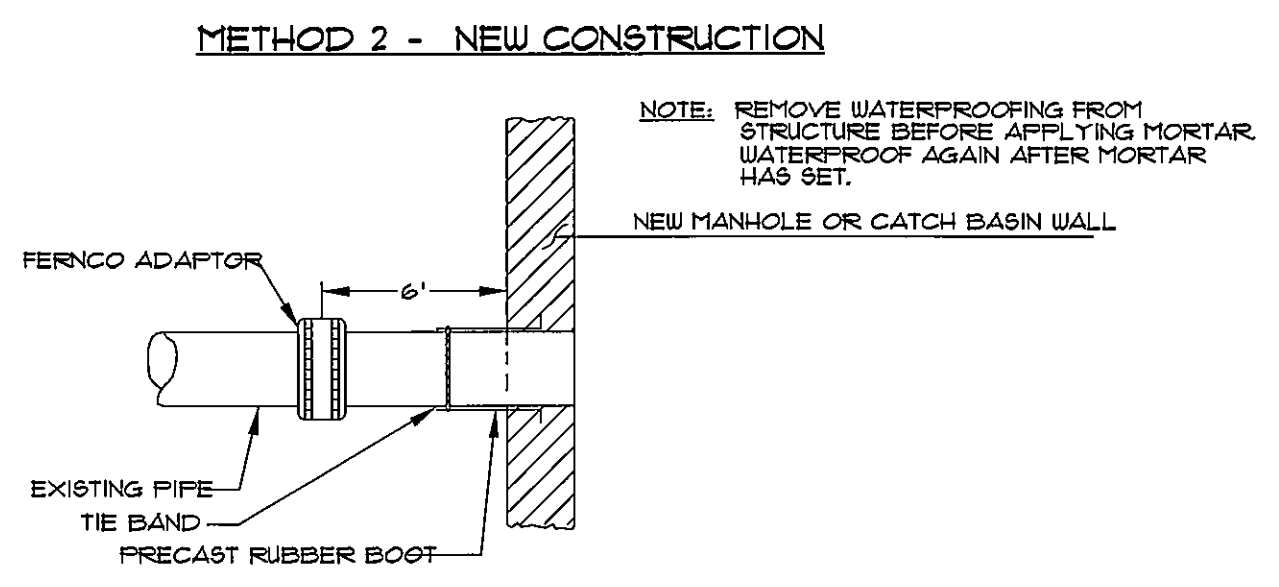
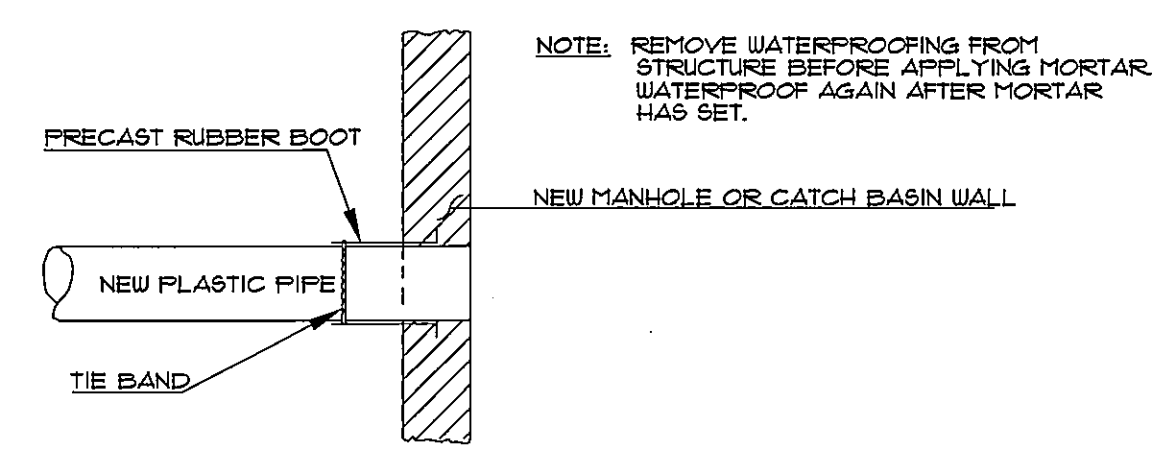
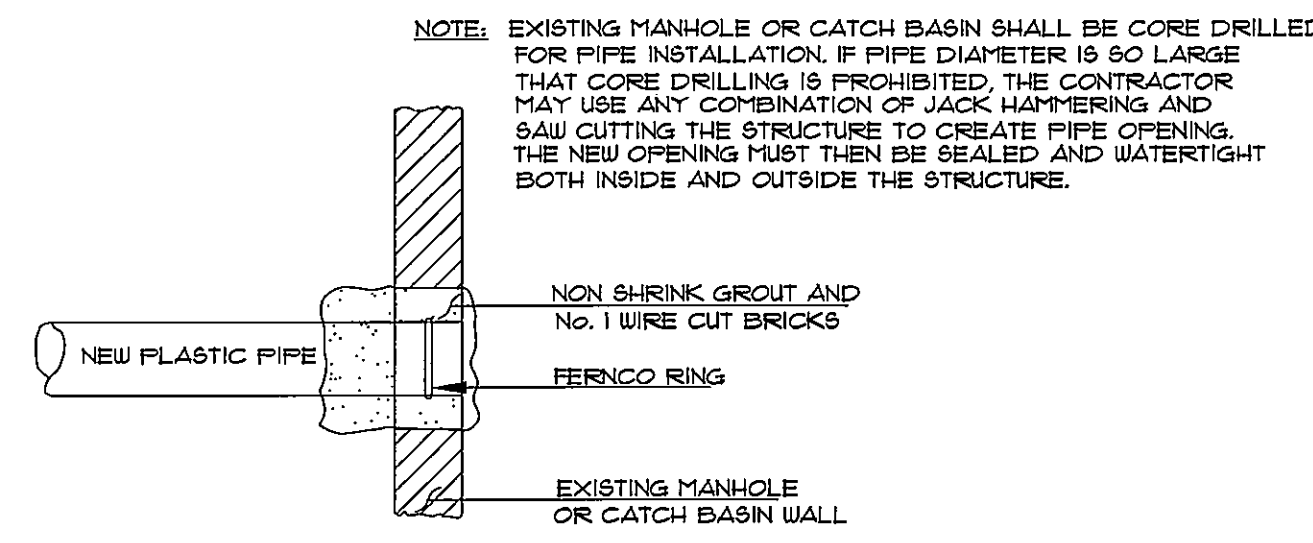
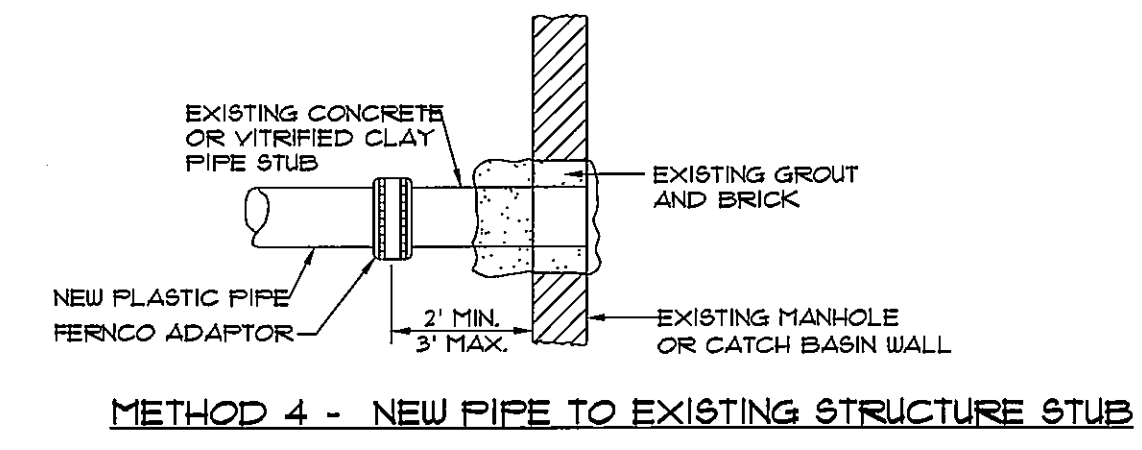
PRECAST CONCRETE CATCH BASIN - TYPE "E"
NOT TO SCALE



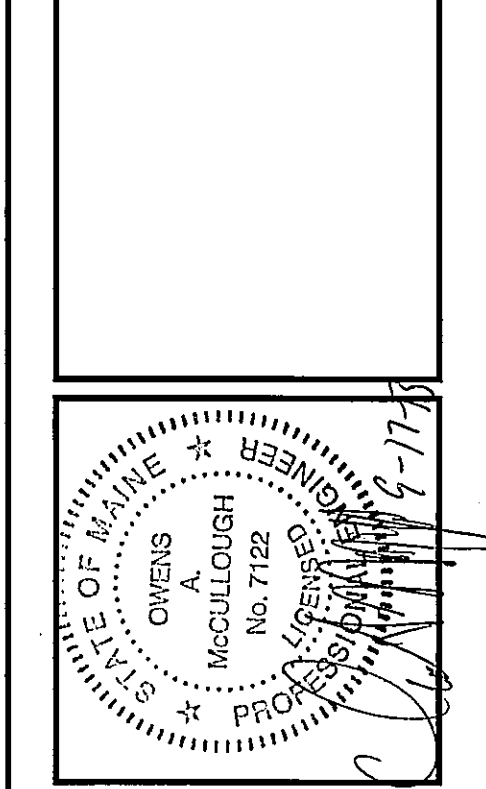
PLASTIC MANHOLE STEPS
NOT TO SCALE



- NOTES:**
- ALL SANITARY AND STORMWATER/DRAIN MANHOLE COVERS SHALL BE 24" x 24". ALL SANITARY MANHOLE COVERS AND SHALL HAVE "SEWER" CAST INTO THE COVER. ALL STORMWATER/DRAIN MANHOLE COVERS SHALL HAVE "DRAIN" CAST INTO THE COVER.



PLASTIC PIPE CONNECTION DETAIL
NOT TO SCALE



PROJECT NO.	13251D
FIELD BOOK	
DESIGN	CHKD
DATE	07-26-13
BY:	WTC
DATE:	07-26-13
STATUS:	SUBMIT SITE PLAN APPLICATION TO CITY
CITY SUBMITTAL 3	09-03-13
CITY SUBMITTAL 4	09-17-13

SEBAGO ENGINEERS
WWW.SEAGOTECHNICALS.COM
75 John Rolland, ME 04108
South Portland, ME 04106
Tel: 207-260-2100
Tel: 207-795-5856

PROJECT NO. 13251D
FIELD BOOK
DESIGN
CHKD
DRAWN
MAIL

DETAILS

OF:
SEAPORT LOFTS
NEWBURY / HANCOCK STREET
PORTLAND, MAINE

FOR:
113 NEWBURY STREET, LLC
36 FAX STREET, SUITE 407B
BOSTON, MA 02114-4520

DATE	SCALE
07-26-13	AS SHOWN

SHEET 12 OF 14

13251D.dwg, TAB:03