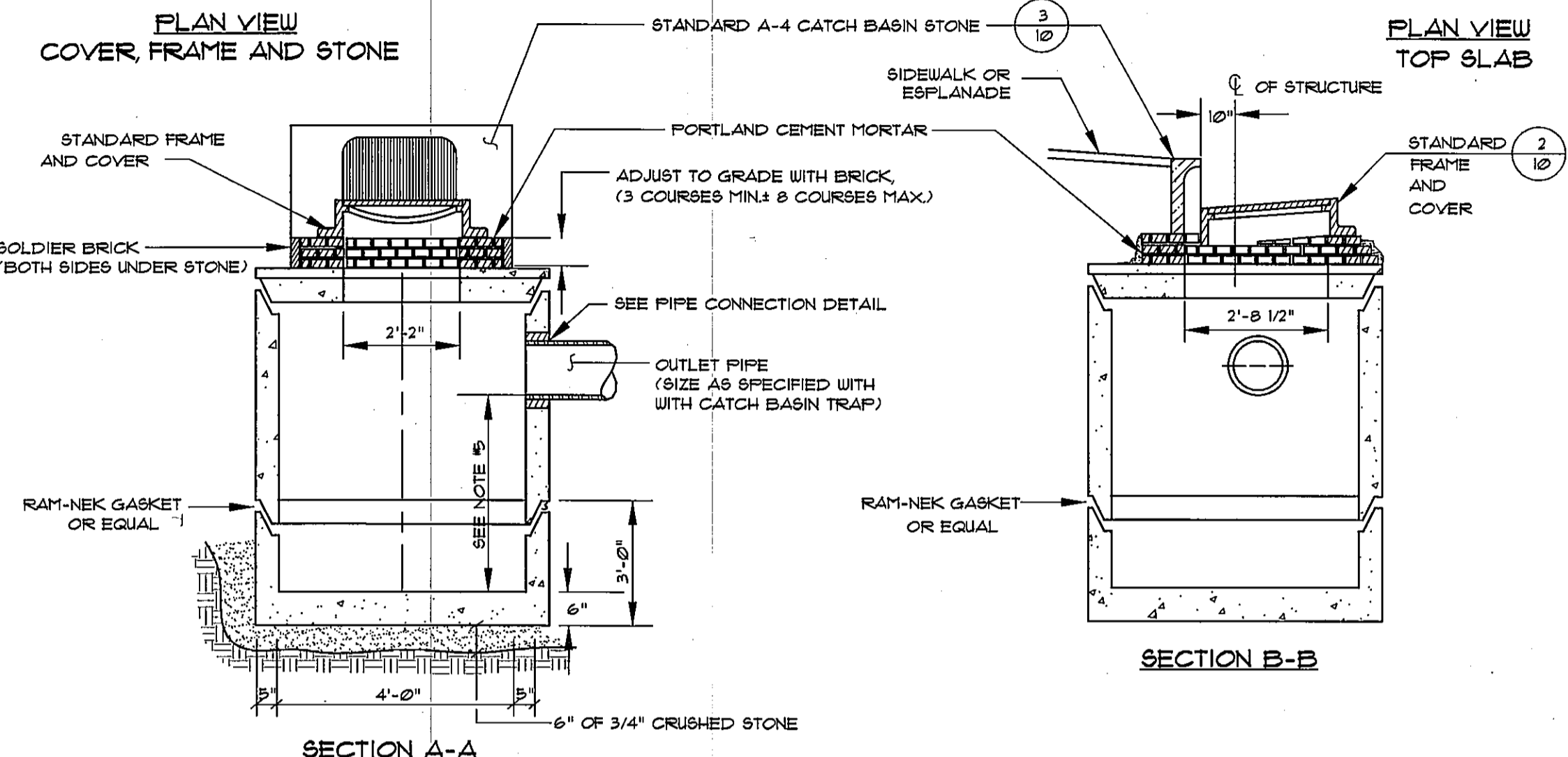


ALL JOINTS SHALL BE COMPLETELY FILLED WITH MORTAR

BRICK JOINT DETAIL



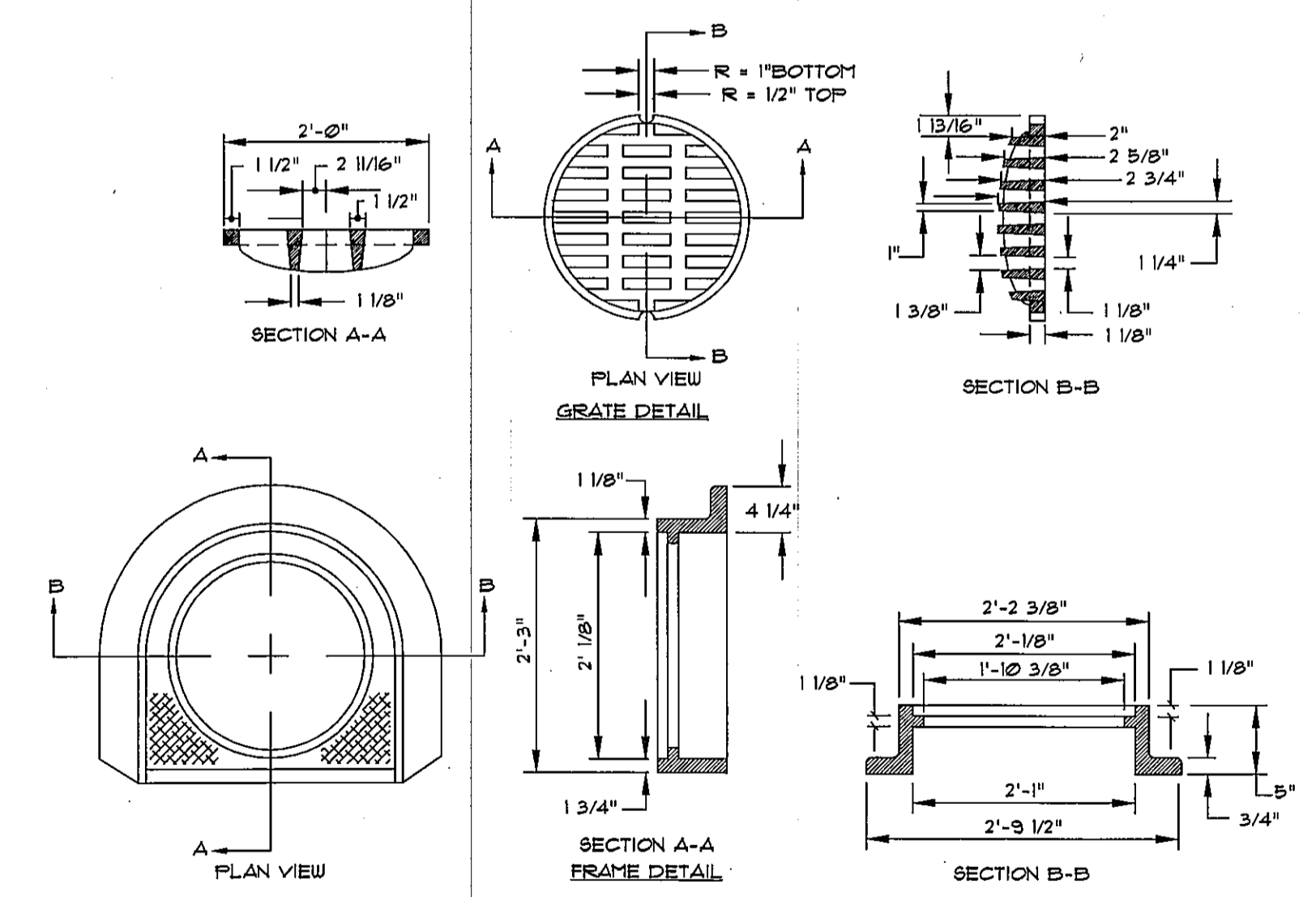
SECTION A-A

SECTION B-B

- NOTES:**
- 4'-0" I.D. TYPICAL. SOME STRUCTURES MAY REQUIRE LARGER I.D. PROVIDE SHOP DRAWINGS FOR APPROVAL.
 - DRAINAGE STRUCTURES TO BE DESIGNED FOR H-20 LOADING.
 - PIPE SIZES AND INVERTS AS NOTED ON PLANS.
 - CATCH BASIN FRAME AND GRATE TO ACCOMMODATE 2' MIN. GRATE (H-20 LOADING + BICYCLE SAFE). PROVIDE SHOP DRAWINGS FOR ENGINEER'S / OWNER REPRESENTATIVE'S APPROVAL.
 - ALL CATCH BASIN BUMPS SHALL BE 3" IN DEPTH.

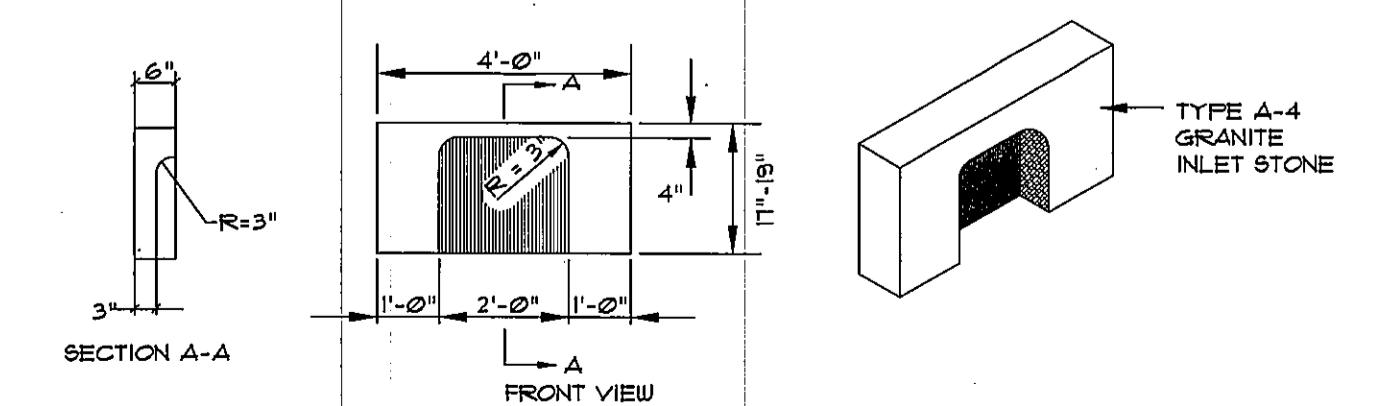
PRECAST CONCRETE CATCH BASIN - TYPE "E"

NOT TO SCALE



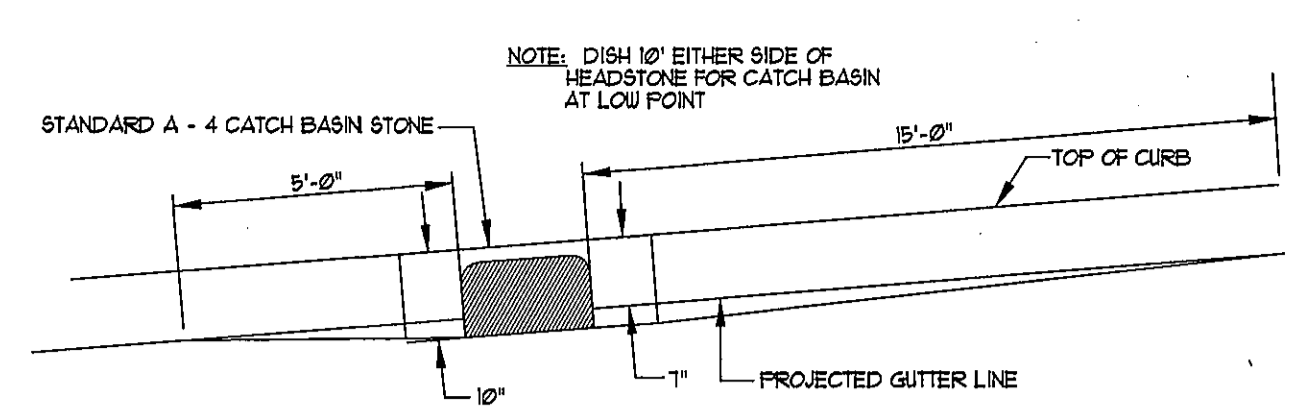
CATCH BASIN TYPE "D" - FRAME & COVER DETAIL

NOT TO SCALE



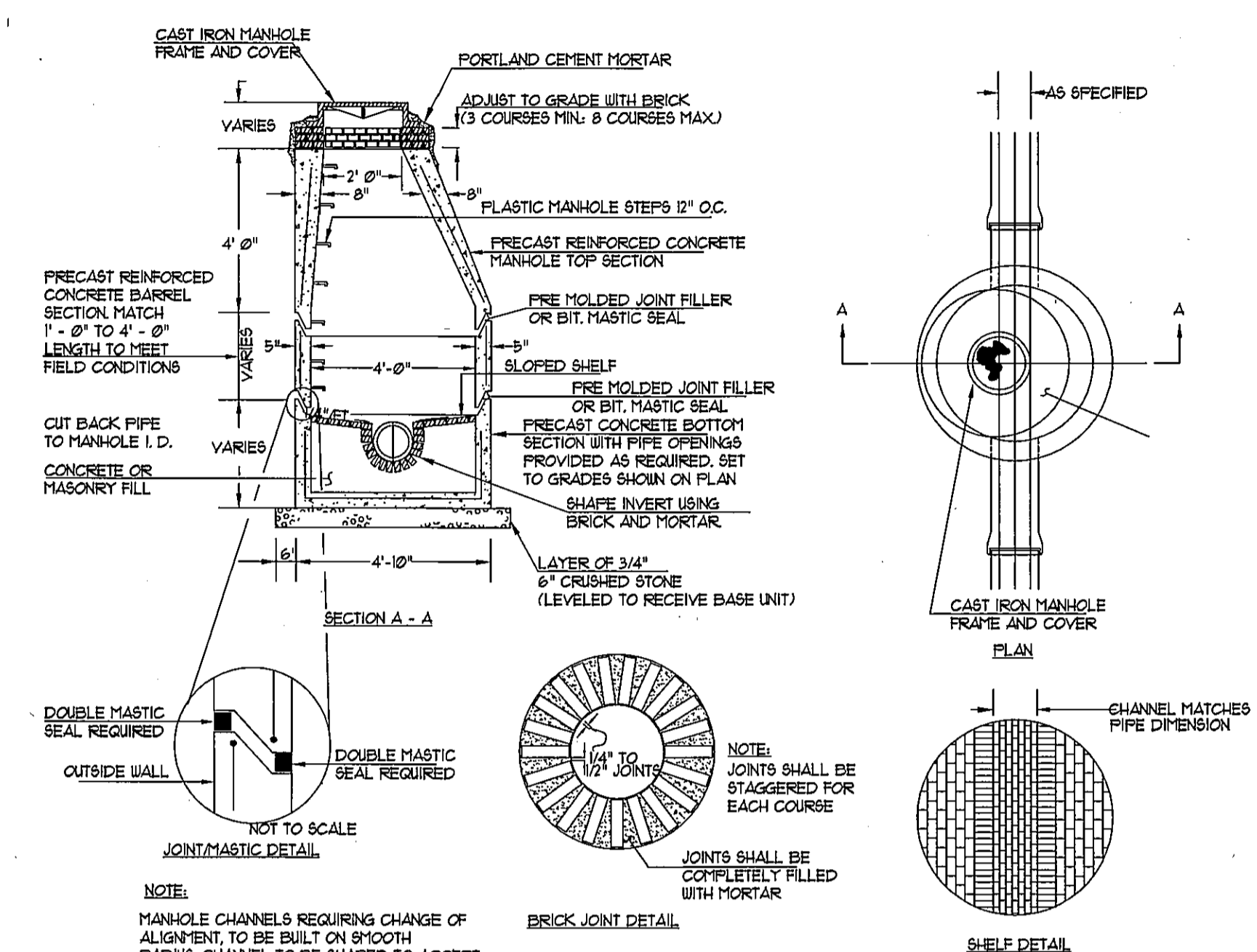
TYPE A-4 GRANITE CATCH BASIN INLET STONE DETAIL

NOT TO SCALE



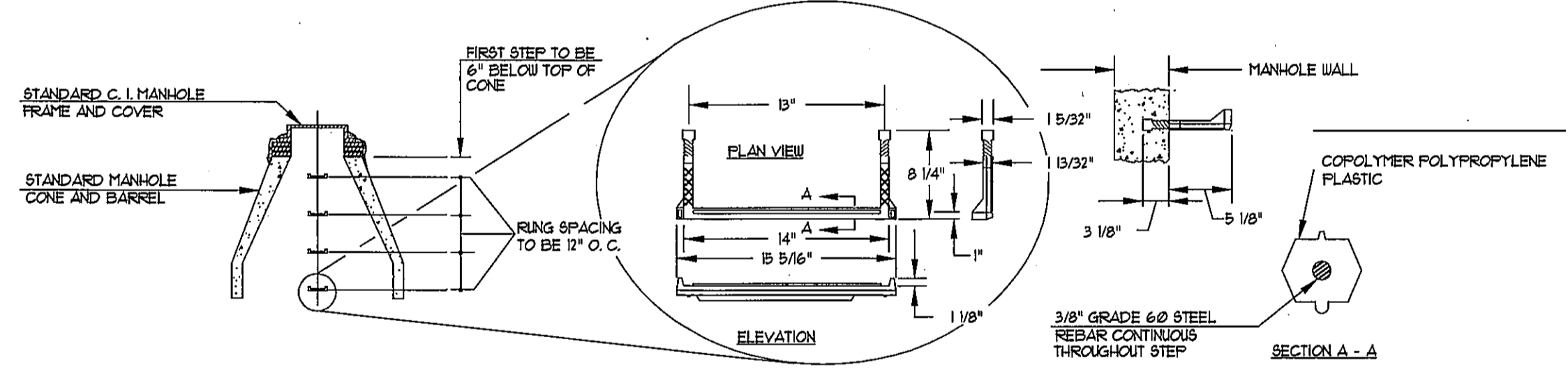
TYPICAL PAVEMENT GRADING ON SLOPES FOR CATCH BASIN AND INLET

NOT TO SCALE



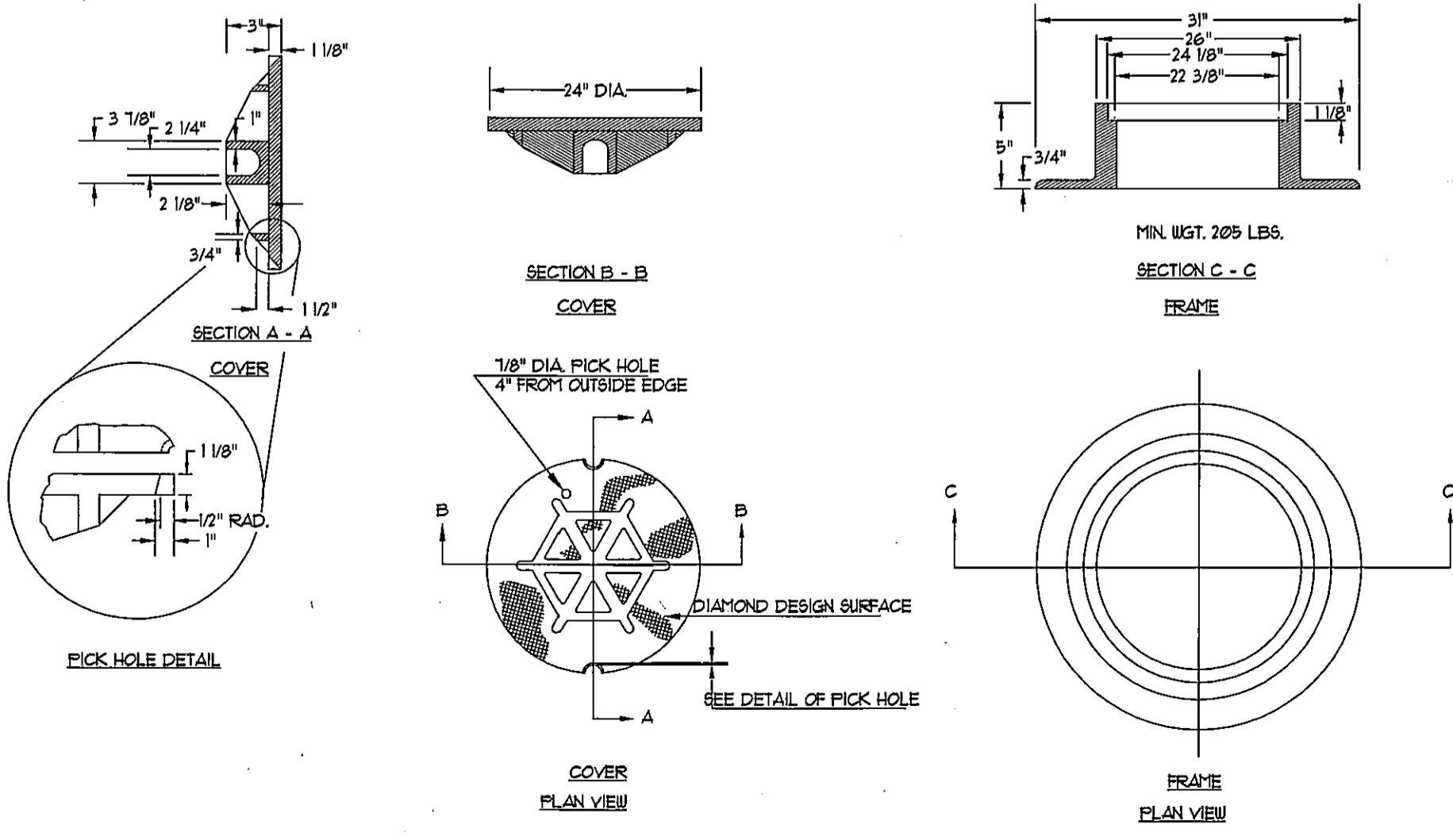
PRECAST CONCRETE MANHOLE TYPE "A"

NOT TO SCALE



PLASTIC MANHOLE STEPS

NOT TO SCALE

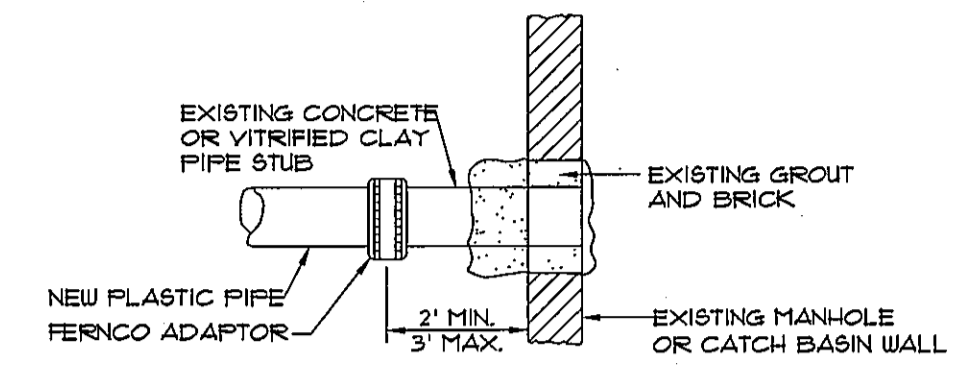


TYPE "A" CAST IRON MANHOLE COVER AND FRAME

NOT TO SCALE

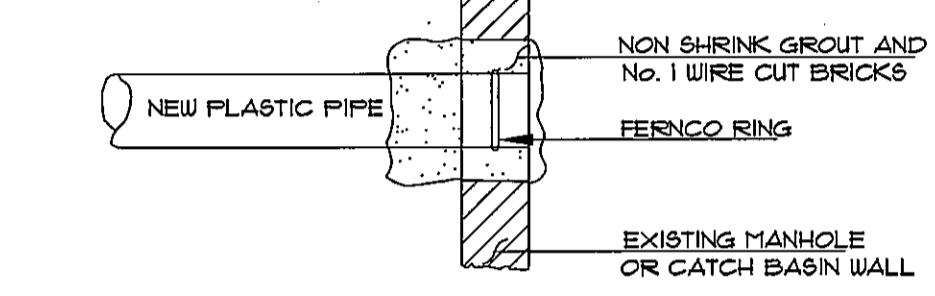
GENERAL NOTES FOR MANHOLES AND CATCH BASINS

- ALL CONCRETE SHALL BE CLASS "A" AND HAVE A MINIMUM ULTIMATE COMPRESSIVE STRENGTH OF 4000 PSI. PER SQ. INCH AT THE END OF 28 DAYS, UNLESS OTHERWISE NOTED.
- PRECAST REINFORCED CONE BARREL MANUFACTURED PER ASTM SPEC. C-418-61
- SEWER BRICK SHALL CONFORM TO ASTM SPEC. DESIGNATE ON C-52-63, GRADE "A" AND SA.
- ALL MANHOLES SHALL HAVE A BITUMINOUS WATERPROOFING APPLIED TO THE EXTERIOR SURFACE. IF CONSTRUCTED OF BRICK MASONRY, SURFACE SHALL BE PLASTERED WITH A SMOOTH MORTAR FINISH 3/8" THICK. AFTER THE MORTAR HAS SET, THE SURFACE SHALL BE WATERPROOFED AS REQUIRED BY SUPPLEMENTAL SPECIFICATIONS SECTION 6.04.
- CASTINGS SHALL CONFORM TO ASTM DESIGNATION A48-CLASS 35. ALL PARTS OF CASTINGS EXCEPT FINISHED SURFACE SHALL RECEIVE A COAT OF COAL TAR PITCH VARNISH OR ASPHALTUM PAINT WHICH SHALL BE SMOOTH AND TOUGH BUT NOT BRITTLE.
- MANHOLES MAY BE CONSTRUCTED OF MASONRY, PRECAST REINFORCED CONCRETE, OR CAST IN PLACE.
- ALL PRECAST MANHOLES AND CATCH BASINS SHALL BE IDENTIFIED BY STATION AND OFFSET, PAINTED ON THE SIDE OF THE STRUCTURE BY THE MANUFACTURER.
- STORM AND SEWER MANHOLES SHALL HAVE SOLID COVERS WITH ONE DRILLED PICK HOLE.
- EXISTING MANHOLES, CATCH BASINS, FRAMES, AND COVERS SHALL BE SALVAGED BY THE CONTRACTOR, AND SHALL REMAIN THE PROPERTY OF THE CITY OF PORTLAND.



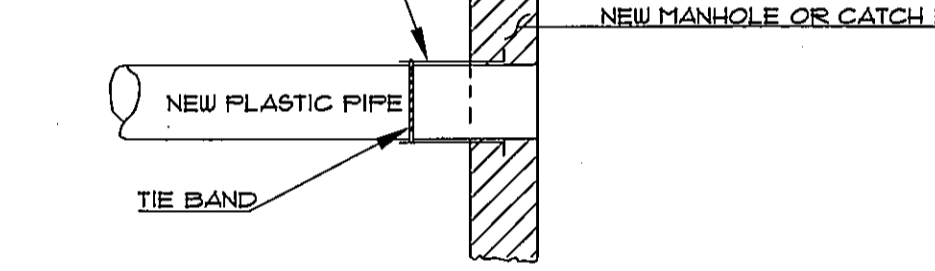
METHOD 4 - NEW PIPE TO EXISTING STRUCTURE STUB

NOTE: EXISTING MANHOLE OR CATCH BASIN SHALL BE CORE DRILLED FOR PIPE INSTALLATION. IF PIPE DIAMETER IS SO LARGE THAT CORE DRILLING IS PROHIBITED, THE CONTRACTOR MAY USE ANY COMBINATION OF JACK HAMMERS AND SAW CUTTING THE STRUCTURE TO CREATE PIPE OPENING. THE NEW OPENING MUST THEN BE SEALED AND WATERTIGHT BOTH INSIDE AND OUTSIDE THE STRUCTURE.



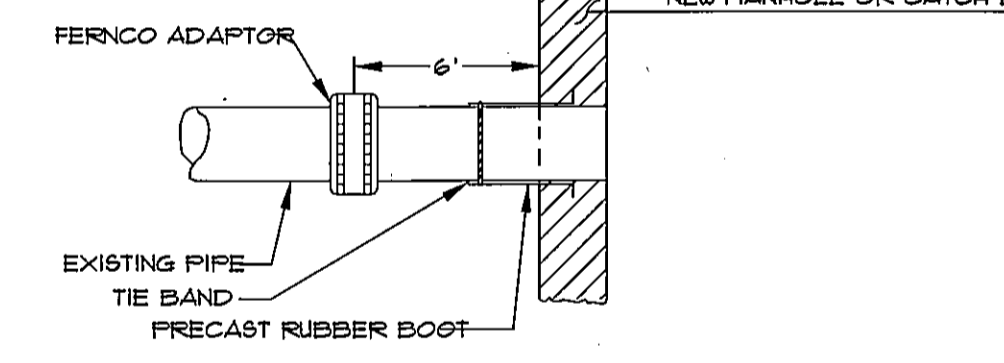
METHOD 3 - NEW PIPE INTO EXISTING STRUCTURE

NOTE: REMOVE WATERPROOFING FROM STRUCTURE BEFORE APPLYING MORTAR. WATERPROOF AGAIN AFTER MORTAR HAS SET.



METHOD 2 - NEW CONSTRUCTION

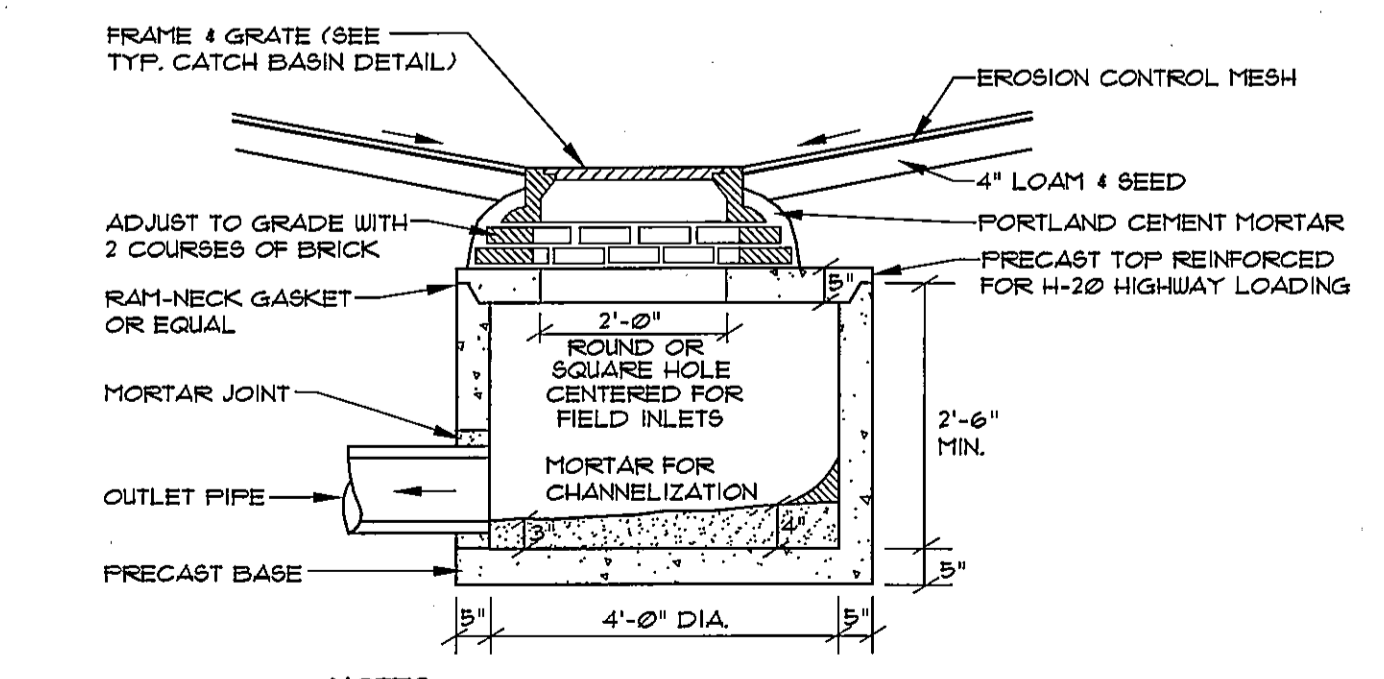
NOTE: REMOVE WATERPROOFING FROM STRUCTURE BEFORE APPLYING MORTAR. WATERPROOF AGAIN AFTER MORTAR HAS SET.



METHOD 1 - EXISTING PIPE INTO NEW STRUCTURE

PLASTIC PIPE CONNECTION DETAIL

NOT TO SCALE



- NOTES:**
- SUBMIT SHOP DRAWINGS FOR OWNERS APPROVAL.
 - SEE PLAN AND PROFILE FOR INVERT AND RIM ELEVATIONS.

FIELD INLET CATCH BASIN

NOT TO SCALE

<p>SEBAGO TECHNICAL SERVICES</p> <p>75 John Rolland Ave., Suite B South Portland, ME 04106 Tel. 207-282-2100</p>		<p>DATE: 07-26-13</p> <p>BY: WTC</p> <p>REV: A</p>	<p>STATUS: SUBMIT SITE PLAN APPLICATION TO CITY</p>
<p>PROJECT NO. 13251</p>	<p>FIELD BOOK</p>	<p>DESIGN</p>	<p>CHKD</p>
<p>13251.D.dwg, TAB: D.3</p>	<p>WTC</p>	<p>WTC</p>	<p>MAJ</p>

DETAILS OF: THE BAY HOUSE, PHASE II
NEWBURY / HANCOCK STREET
PORTLAND, MAINE
FOR: 113 NEWBURY STREET, LLC
35 FAY STREET, SUITE 107B
BOSTON, MA 02118-4320