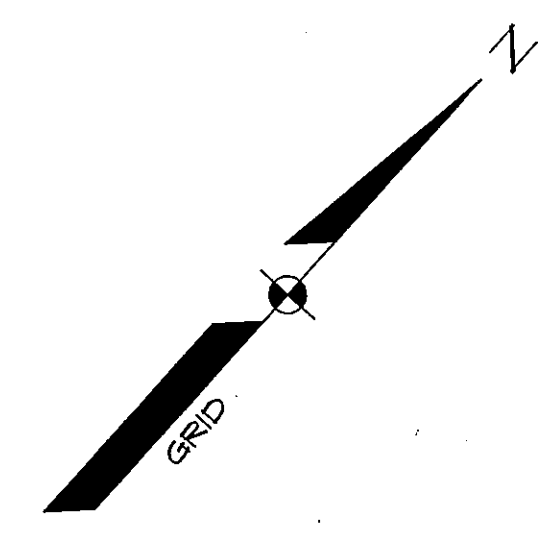
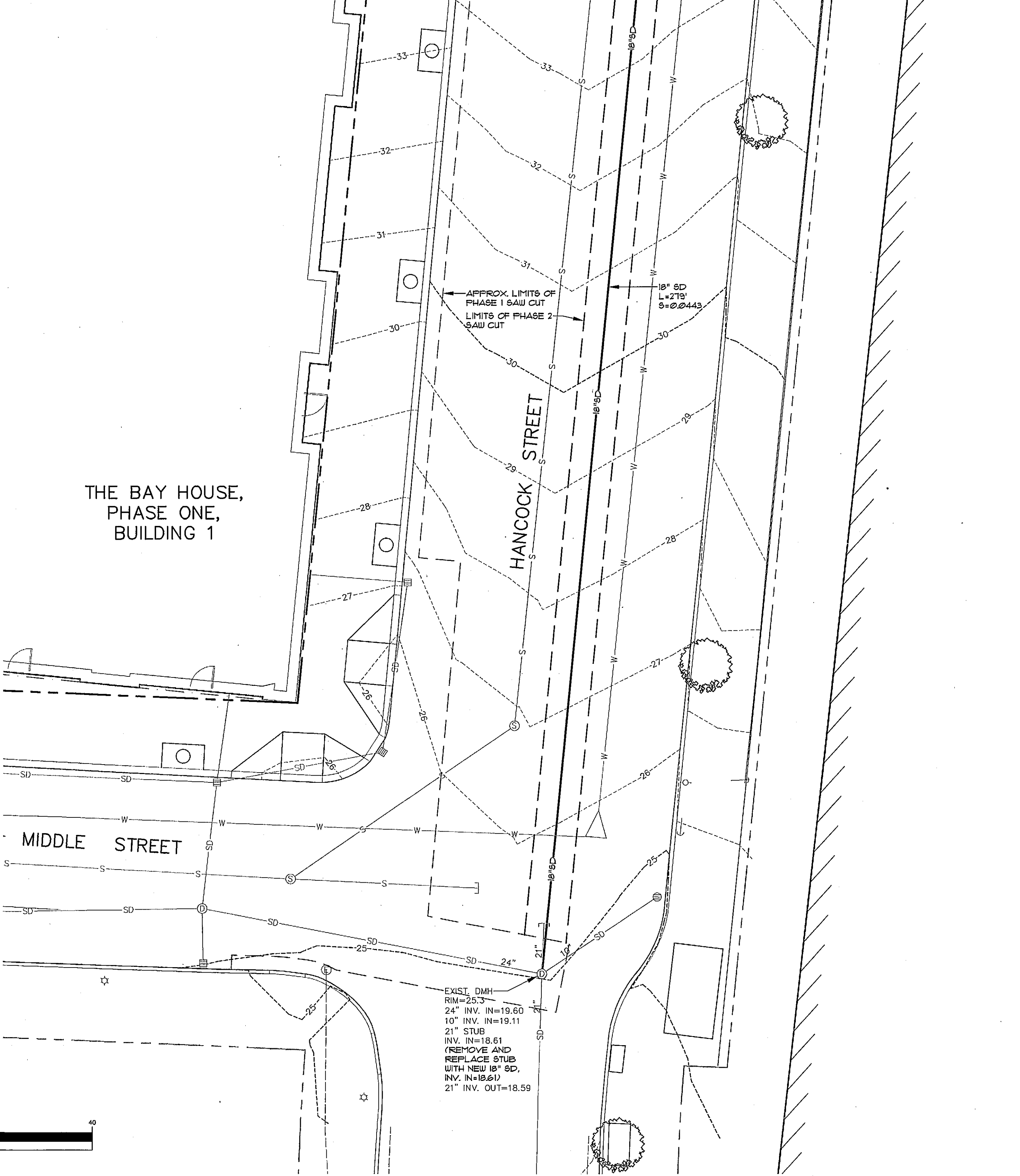


**LEGEND**

EXISTING	DESCRIPTION	PROPOSED	EXISTING	DESCRIPTION	PROPOSED
---	BOUNDARY LINE/ROW	---	⊗	WATER GATE VALVE	⊗
---	ABUTTER LINE/ROW	---	⊗	WATER SHUT OFF	⊗
---	SETBACK	---	⊗	HYDRANT	⊗
▨	BUILDING	▨	S	SEWER	S
---	SIGN	---	⊙	SEWER MH	⊙
---	EDGE PAVEMENT	---	SD	STORM DRAIN	SD
---	EDGE CONCRETE	---	RD	ROOF DRAIN	RD
---	CURLINE	---	⊙	CATCH BASIN	⊙
---	CONTOURS	---	⊙	DRAINAGE MH	⊙
---	SPOT GRADE	---	OHU	OVERHEAD UTILITY	OHU
---	SCREEN FENCING	---	UGU	UNDERGROUND UTILITY	UGU
---	RETAINING WALL	---	⊙	TRANSFORMER PAD	⊙
⊙	DECIDUOUS TREE	---	⊙	ELECTRICAL MANHOLE	⊙
⊙	CONIFEROUS TREE	---	⊙	LIGHT POLE/WALL	⊙
⊙	GAS	---	⊙	UTILITY POLE	⊙
W	WATER	---	---	GUT	---

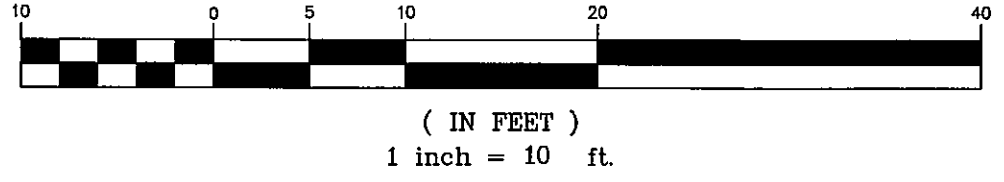


MATCHLINE RIGHT



MATCHLINE LEFT

GRAPHIC SCALE



DATE	07-26-13	DATE	07-26-13	DATE	07-26-13
BY	WTC	BY	WTC	BY	WTC
REV.		REV.		REV.	
SUBMIT SITE PLAN APPLICATION TO CITY STATUS:					

**SEBAGO TECHNICS**  
 WWW.SEAGOTECHNICS.COM  
 75 John Rolland, Suite B  
 South Portland, ME 04106  
 Tel. 207-200-2100  
 Fax 207-765-5856

PROJECT NO. 13251  
 FIELD BOOK DESIGN CHKD DRAWN  
 WTC WTC WTC MAL

OFF-SITE DRAINAGE PLAN  
 OF:  
**THE BAY HOUSE, PHASE II**  
 NEWBURY/HANCOCK STREET  
 PORTLAND, MAINE  
 FOR:  
**113 NEWBURY STREET, LLC**  
 36 FAX STREET, SUITE 107B  
 BOSTON, MA 02114-4500

DATE	SCALE
07-26-13	1" = 10'