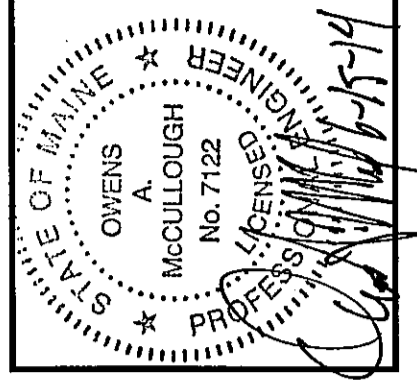
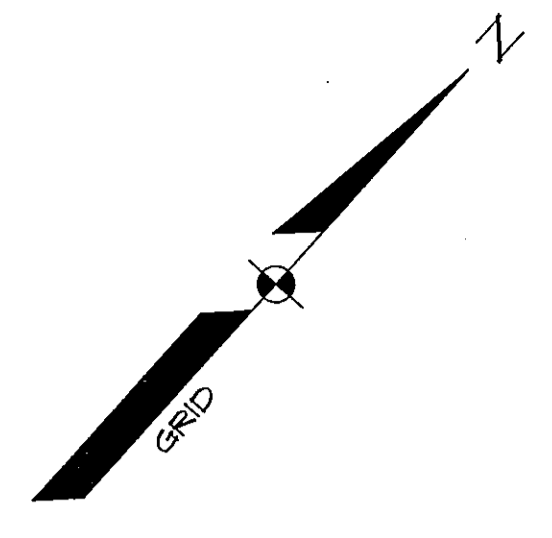
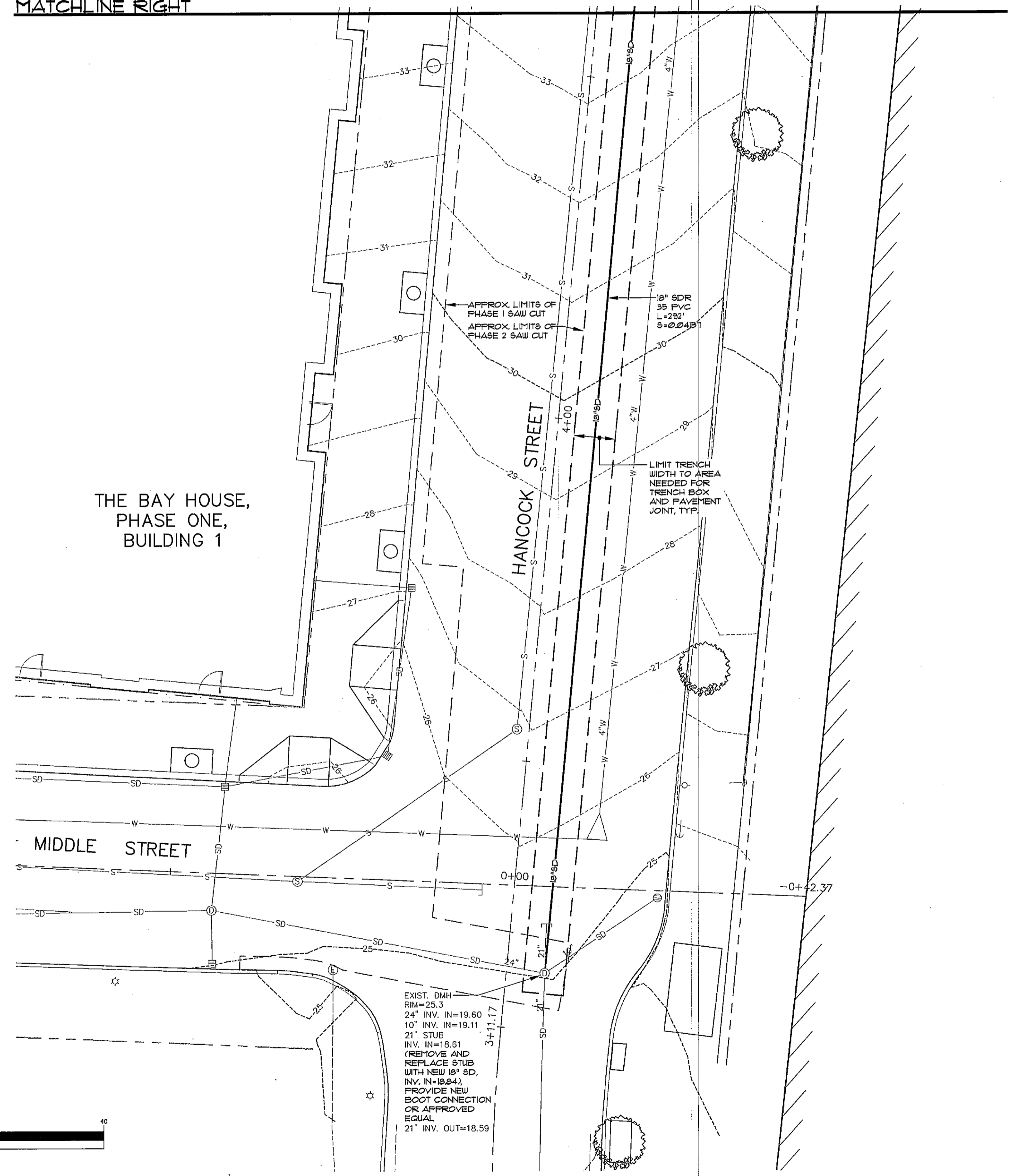


**NOTES:**  
 1. STORM DRAIN SHALL BE SMOOTH BORE ADS N-12 DUAL-WALLED, HIGH DENSITY POLYETHYLENE PIPE OR EQUAL WITHIN SITE LIMITS.  
 2. STORM DRAIN SHALL BE SDR-35 PVC PIPE WITHIN CITY RIGHT-OF-WAYS.

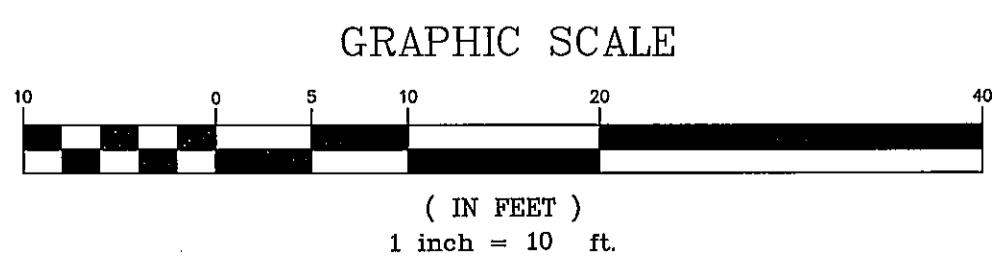
EXISTING		DESCRIPTION	PROPOSED		EXISTING	DESCRIPTION	PROPOSED
---	---	BOUNDARY LINE/R.O.W.	---	---	⊠	WATER GATE VALVE	⊠
---	---	ADJUTER LINE/R.O.W.	---	---	⊠	WATER SHUT OFF	⊠
---	---	SETBACK	---	---	⊠	HYDRANT	⊠
---	---	BUILDING	---	---	⊠	SEWER	⊠
---	---	SIGN	---	---	⊠	SEWER MH	⊠
---	---	EDGE PAVEMENT	---	---	⊠	STORM DRAIN	⊠
---	---	EDGE CONCRETE	---	---	⊠	ROOF DRAIN	⊠
---	---	CURBLINE	---	---	⊠	CATCH BASIN	⊠
---	---	CONTOURS	---	---	⊠	DRAINAGE MH	⊠
---	---	SPOT GRADE	---	---	⊠	OVERHEAD UTILITY	⊠
---	---	SIDEWALK SLOPE	---	---	⊠	UNDERGROUND UTILITY	⊠
---	---	SCREEN FENCING	---	---	⊠	TRANSFORMER PAD	⊠
---	---	RETAINING WALL	---	---	⊠	ELECTRICAL MANHOLE	⊠
---	---	DECIDUOUS TREE	---	---	⊠	LIGHT POLE/WALL	⊠
---	---	CONIFEROUS TREE	---	---	⊠	UTILITY POLE	⊠
---	---	GAS	---	---	⊠	GUY	⊠
---	---	WATER	---	---	⊠		



MATCHLINE RIGHT



MATCHLINE LEFT



REV.	BY:	DATE:	STATUS:
H	WTC	06-20-14	CITY SUBMITTAL 8
G	WTC	06-12-14	FOUNDATION PERMIT SET
F	WTC	01-07-13	CITY SUBMITTAL 7
E	WTC	10-15-13	CITY SUBMITTAL 6
D	WTC	10-03-13	CITY SUBMITTAL 5
C	WTC	09-17-13	CITY SUBMITTAL 4
B	WTC	09-03-13	CITY SUBMITTAL 3

THIS PLAN SHALL NOT BE MODIFIED WITHOUT WRITTEN PERMISSION FROM SEBAGO TECHNIQS, INC. ANY ALTERATIONS AUTHORIZED OR OTHERWISE, SHALL BE AT THE USER'S SOLE RISK AND WITHOUT LIABILITY TO SEBAGO TECHNIQS, INC.

**SEBAGO**  
 TECHNICAL SERVICES  
 75 South Portland, ME 04106  
 Tel: 207-209-2100

PROJECT NO.	FIELD BOOK	DESIGN	CHKD	DRAWN
13251		WTC	WTC	MAL

**OFF-SITE DRAINAGE PLAN**  
 OF:  
**SEAPORT LOFTS**  
 NEWBURY / HANCOCK STREET  
 PORTLAND, MAINE  
 FOR:  
**113 NEWBURY STREET, LLC**  
 35 FAX STREET, SUITE 107B  
 BOSTON, MA 02118-4930

DATE	SCALE
07-26-13	1" = 10'

**SHEET 5 OF 12**

13251.GUL.dwg, TAB: GUL