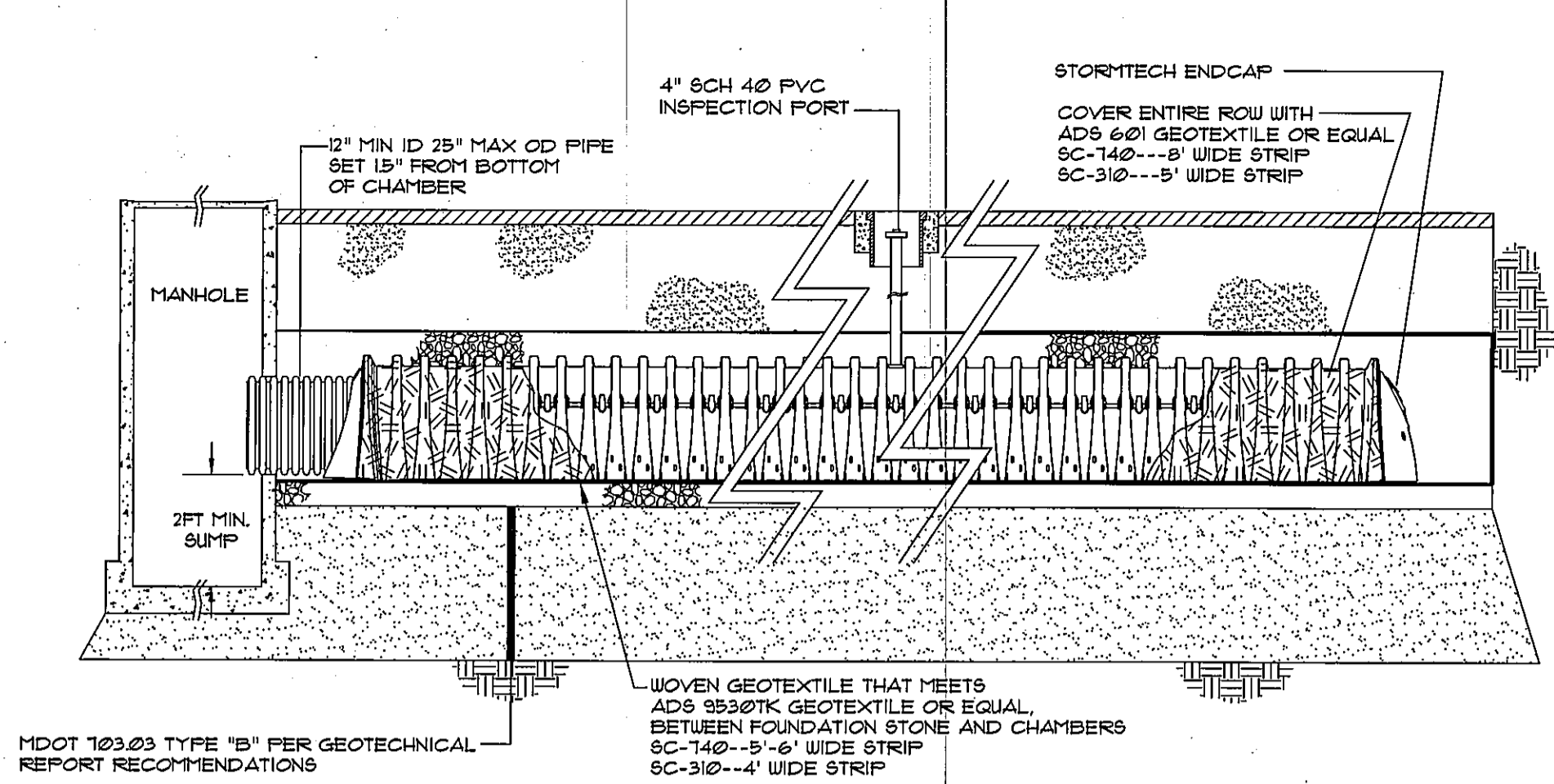
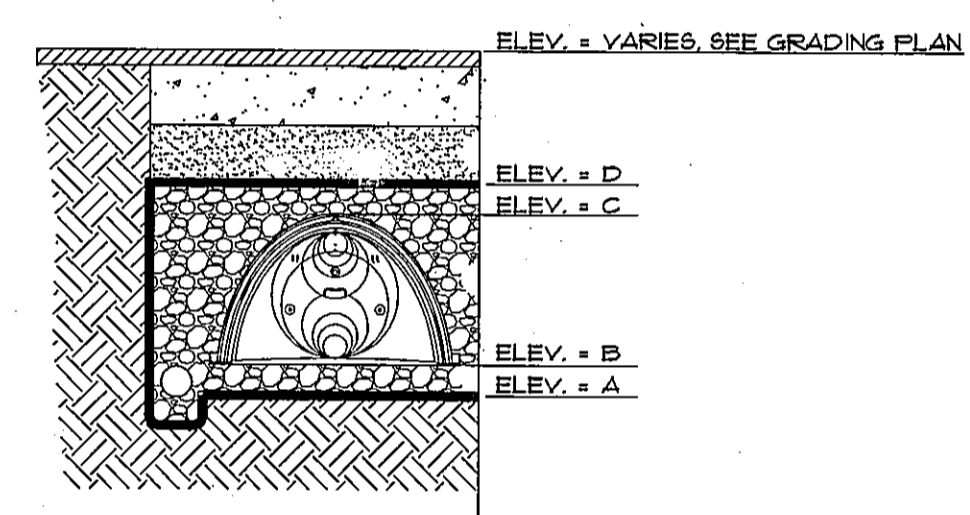


- NOTES:**
1. ALL DESIGN SPECIFICATIONS FOR STORMTECH CHAMBERS SHALL BE IN ACCORDANCE WITH THE STORMTECH DESIGN MANUAL.
 2. THE INSTALLATION OF STORMTECH CHAMBERS SHALL BE IN ACCORDANCE WITH THE LATEST STORMTECH INSTALLATION INSTRUCTIONS.
 3. THE CONTRACTOR IS ADVISED TO REVIEW AND UNDERSTAND THE INSTALLATION INSTRUCTIONS PRIOR TO BEGINNING SYSTEM INSTALLATION. CALL 1-888-892-2694 OR VISIT WWW.STORMTECH.COM TO RECEIVE A COPY OF THE LATEST STORMTECH INSTALLATION INSTRUCTIONS.
 4. CONTACT DESIGN ENGINEER PRIOR TO INSTALLATION OF UNDERDRAIN AND STORMTECH SYSTEM.



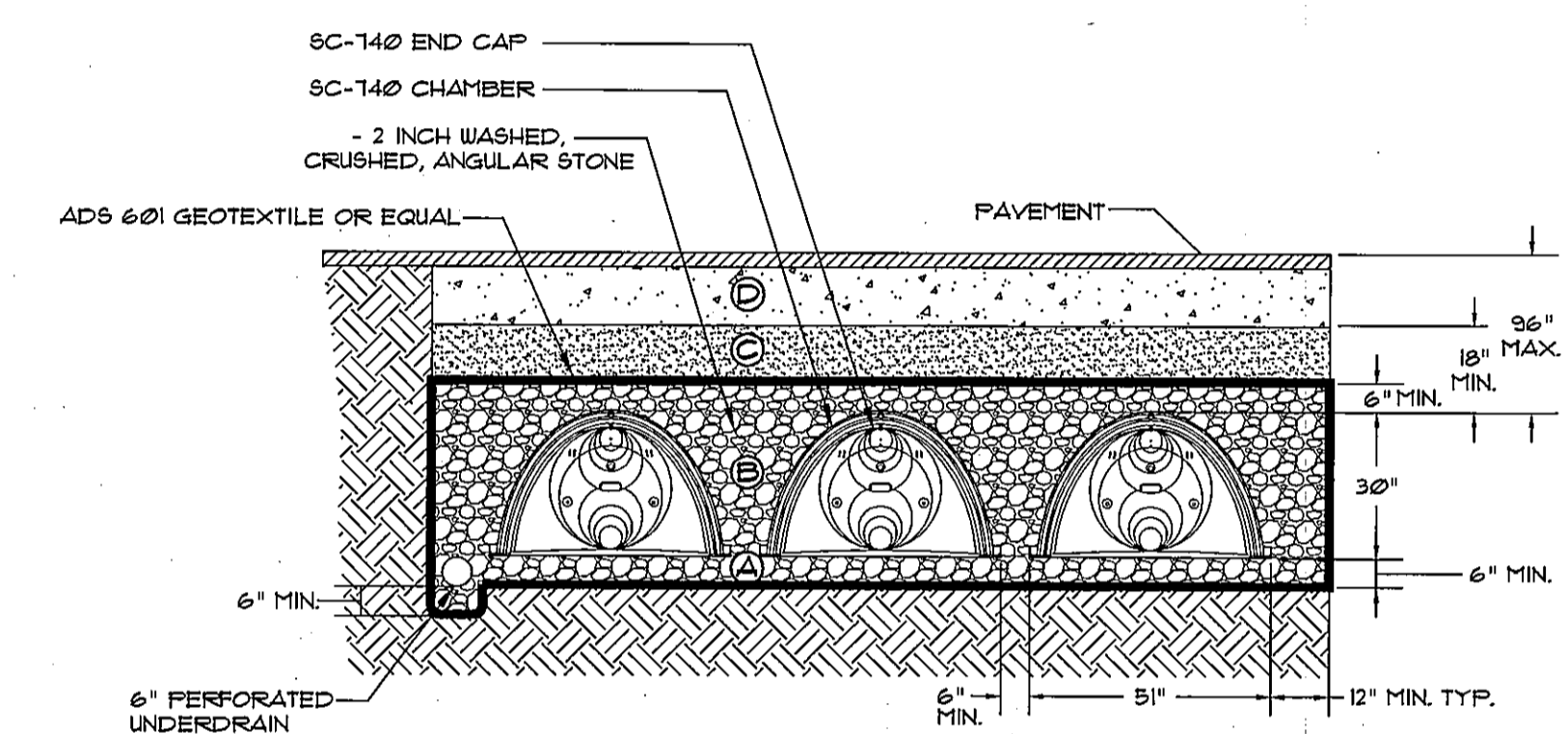
STORMTECH ISOLATOR™ ROW PROFILE VIEW DETAIL
NOT TO SCALE

STORMTECH SC-140 CHAMBER SYSTEM
OPTIONAL INSPECTION PORT DETAIL
NOT TO SCALE



STORMTECH ELEVATIONS				
	A	B	C	D
ST-1	34.05	34.55	31.05	31.55

NOTE: ELEV. A IS THE ELEVATION OF THE BOTTOM OF STONE AND THE INVERT OF THE 6" UNDERDRAIN

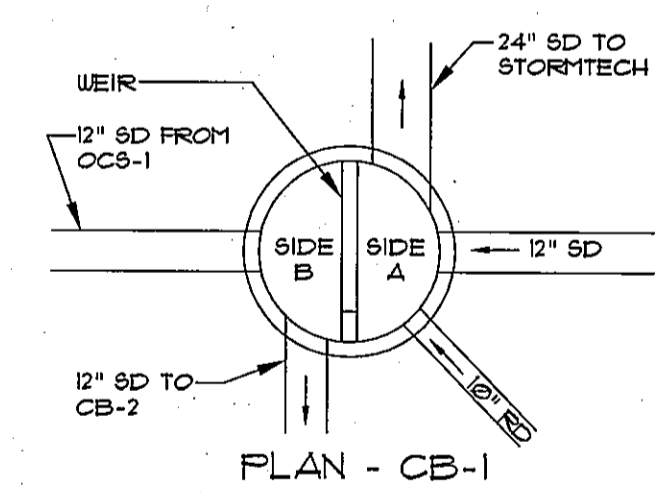


- COMPACTION/DENSITY REQUIREMENTS:**
- WASHED, ANGULAR STONE WITH THE MAJORITY OF PARTICLES BETWEEN 3/4" - 2". PLATE COMPACT OR ROLL TO ACHIEVE A 95% STANDARD PROCTOR DENSITY.
 - WASHED, ANGULAR STONE WITH THE MAJORITY OF PARTICLES BETWEEN 3/4" - 2". NO COMPACTION REQUIRED.
 - GRANULAR WELL-GRADED SOIL/AGGREGATE MIXTURES, <35% FINES. COMPACT IN 6" LIFTS TO A MINIMUM 95% STANDARD PROCTOR DENSITY. ROLLER GROSS VEHICLE WEIGHT NOT TO EXCEED 12,000 POUNDS.
 - ANY SOIL/ROCK MATERIALS, NATIVE SOILS OR PER ENGINEER'S PLANS. CHECK PLANS FOR PAVEMENT SUBGRADE REQUIREMENTS. PREPARE PER ENGINEER'S PLANS.

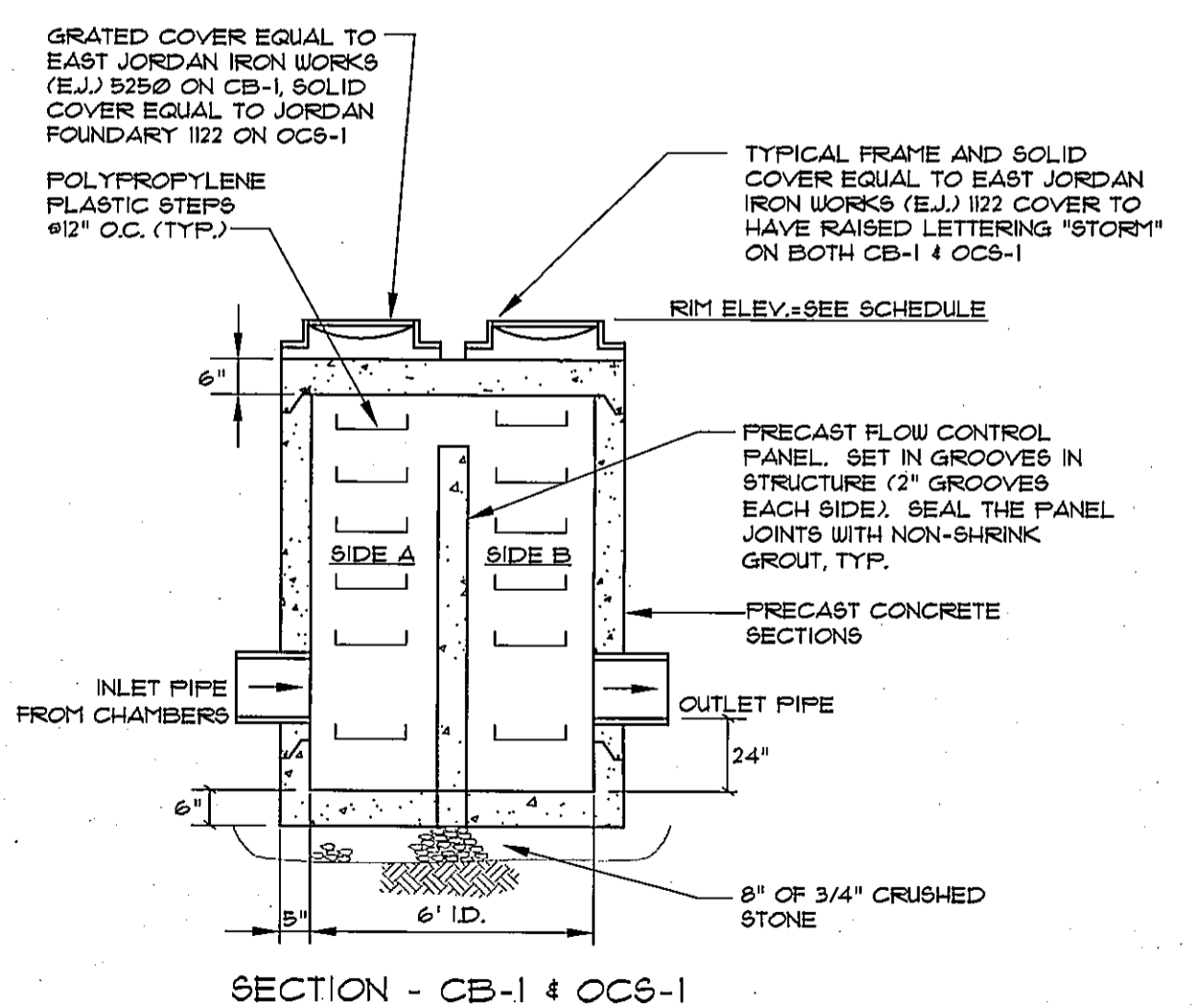
MEDOT SPECIFICATIONS FOR UNDERDRAINS (MEDOT #103.22)

SIEVE SIZE	% BY WEIGHT
UNDERDRAIN TYPE B	
1"	90-100
1/2"	15-100
4"	50-100
20"	0-5
40"	0-5
UNDERDRAIN TYPE C	
1"	100
3/4"	90-100
3/8"	0-15
4"	0-25
40"	0-5
	3/4

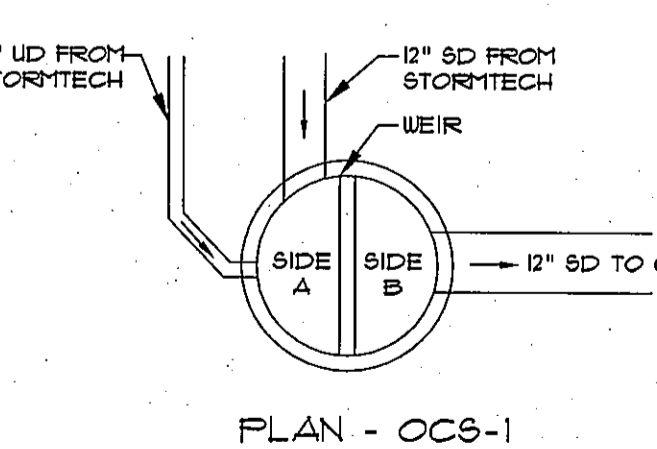
STORMTECH SC-140 CHAMBER SYSTEM
NOT TO SCALE



PLAN - CB-1



SECTION - CB-1 & OCS-1



PLAN - OCS-1

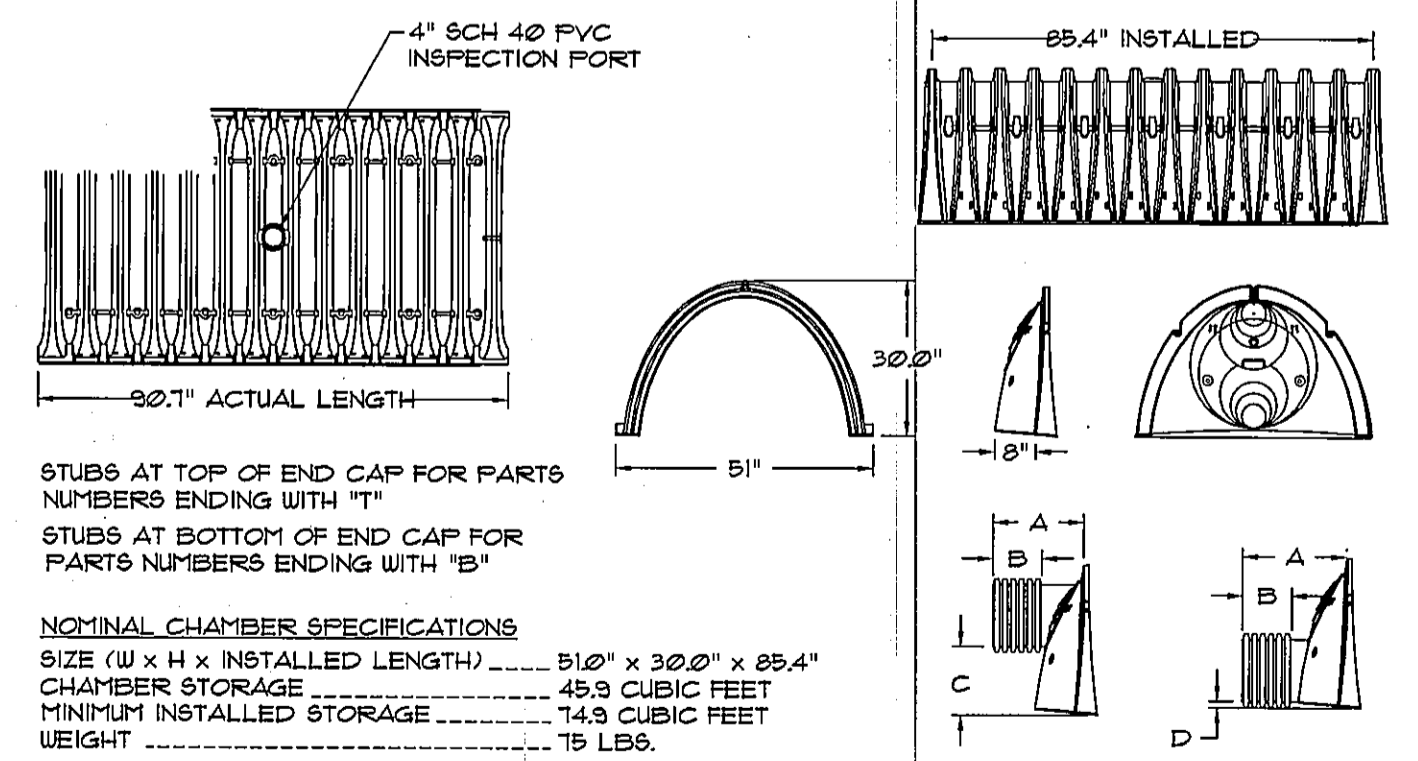
OUTLET CONTROL STRUCTURE (OCS) FOR ST-1
NOT TO SCALE

- NOTE:**
1. SUBMIT SHOP DRAWINGS FOR OWNER/ENGINEER APPROVAL.
 2. STRUCTURE SHALL BE DESIGNED FOR H-20 LOADING.

OUTLET CONTROL STRUCTURE SCHEDULE

	RIM ELEV.	SIDE A		SIDE B		WEIR ELEV.
		INV. IN	INV. OUT	INV. IN	INV. OUT	
CB-1	33.15	34.80 (12"SD) 35.00 (10"RD) TO STORMTECH	34.70 (24"SD)	33.75 (12"SD)	33.50 (12"SD)	31.00
OCS-1	33.55	34.05 (6"UD) 34.40 (12"SD)	34.05 6" ORIFICE	-	33.30 (12"SD)	30.50

STORMTECH SC-140 CHAMBER SYSTEM
TYPICAL CROSS SECTION DETAIL
NOT TO SCALE



STUBS AT TOP OF END CAP FOR PARTS NUMBERS ENDING WITH "T"
STUBS AT BOTTOM OF END CAP FOR PARTS NUMBERS ENDING WITH "B"

NOMINAL CHAMBER SPECIFICATIONS

SIZE (W x H x INSTALLED LENGTH)	51.0" x 30.0" x 25.4"
CHAMBER STORAGE	45.9 CUBIC FEET
MINIMUM INSTALLED STORAGE	74.9 CUBIC FEET
WEIGHT	175 LBS.

PART #	CHAMBER	PIPE SIZE	A	B	C	D
SC140EPE21B	SC 140	15 in (375 mm)	19.30 in (490 mm)	10.30 in (262 mm)	10.5	26.1 in (30 mm)
SC140EPE24B	SC 140	24 in (600 mm)	19.30 in (490 mm)	9.45 in (240 mm)	N/A	0.10 in (3 mm)

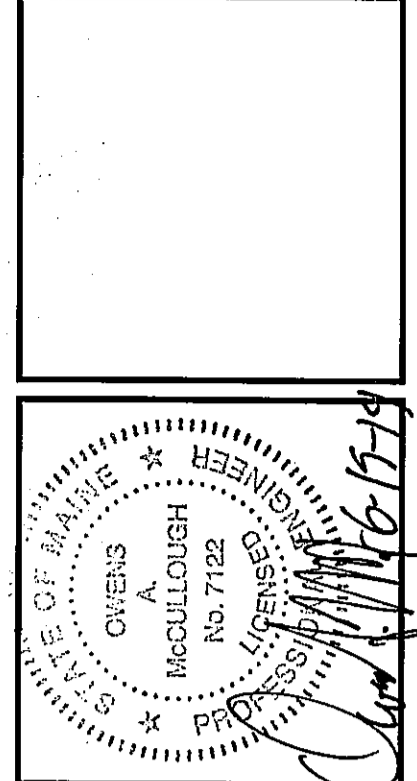
NOTE: ALL DIMENSIONS ARE NOMINAL

* FOR THE SC310EPE12B THE 12" STUB LIES BELOW THE BOTTOM OF THE END CAP APPROXIMATELY 0.25".

ALL STUBS, EXCEPT FOR THE SC310EPE12B AND SC140EPE24B ARE PLACED AT BOTTOM OF END CAP SUCH THAT THE OUTSIDE DIAMETER OF THE STUB IS FLUSH WITH THE BOTTOM OF THE END CAP.

FOR THE SC140EPE24B THE 24" STUB LIES BELOW THE BOTTOM OF THE END CAP APPROXIMATELY 1.75". BACKFILL MATERIAL SHOULD BE REMOVED FROM BELOW THE N-D STUB SO THAT THE FITTING SETS LEVEL.

STORMTECH SC-140 CHAMBER
TECHNICAL SPECIFICATIONS
NOT TO SCALE



WTC	DATE	DESCRIPTION
WTC	06-20-14	CITY SUBMITTAL 8
WTC	06-12-14	FOUNDATION PERMIT SET
WTC	01-07-13	CITY SUBMITTAL 7
WTC	10-15-13	CITY SUBMITTAL 6
WTC	10-03-13	CITY SUBMITTAL 5
WTC	09-17-13	CITY SUBMITTAL 4
WTC	09-03-13	CITY SUBMITTAL 3
REV.	DATE	STATUS
H		
G		
F		
E		
D		
C		
B		
A		

SEBAGO TECHNICAL SERVICES
WWW.SEABAGOTECHNICALSERVICES.COM
75 John Roberts Rd., Suite 1A
South Portland, ME 04106
Tel: 207-250-0200 Fax: 207-250-0200

PROJECT NO. 13251
DESIGN: WTC
CHECK: WTC
DRAWN: MAL
DATE: 07-26-13

SEAPORT LOFTS
NEWBURY / HANCOCK STREET
PORTLAND, MAINE
FOR: 113 NEWBURY STREET, LLC
35 FAY STREET, SUITE 107B
BOSTON, MA 02118-4920

DATE	SCALE
07-26-13	AS SHOWN