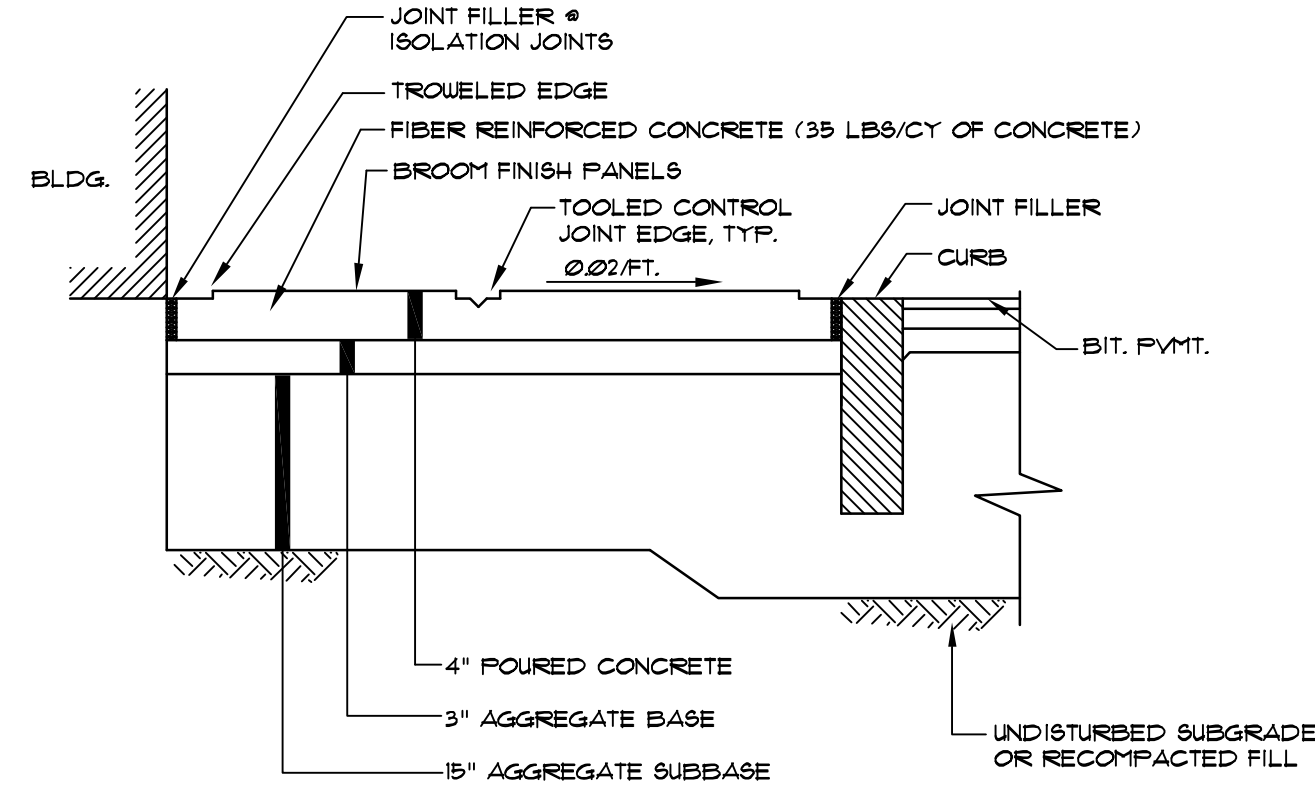


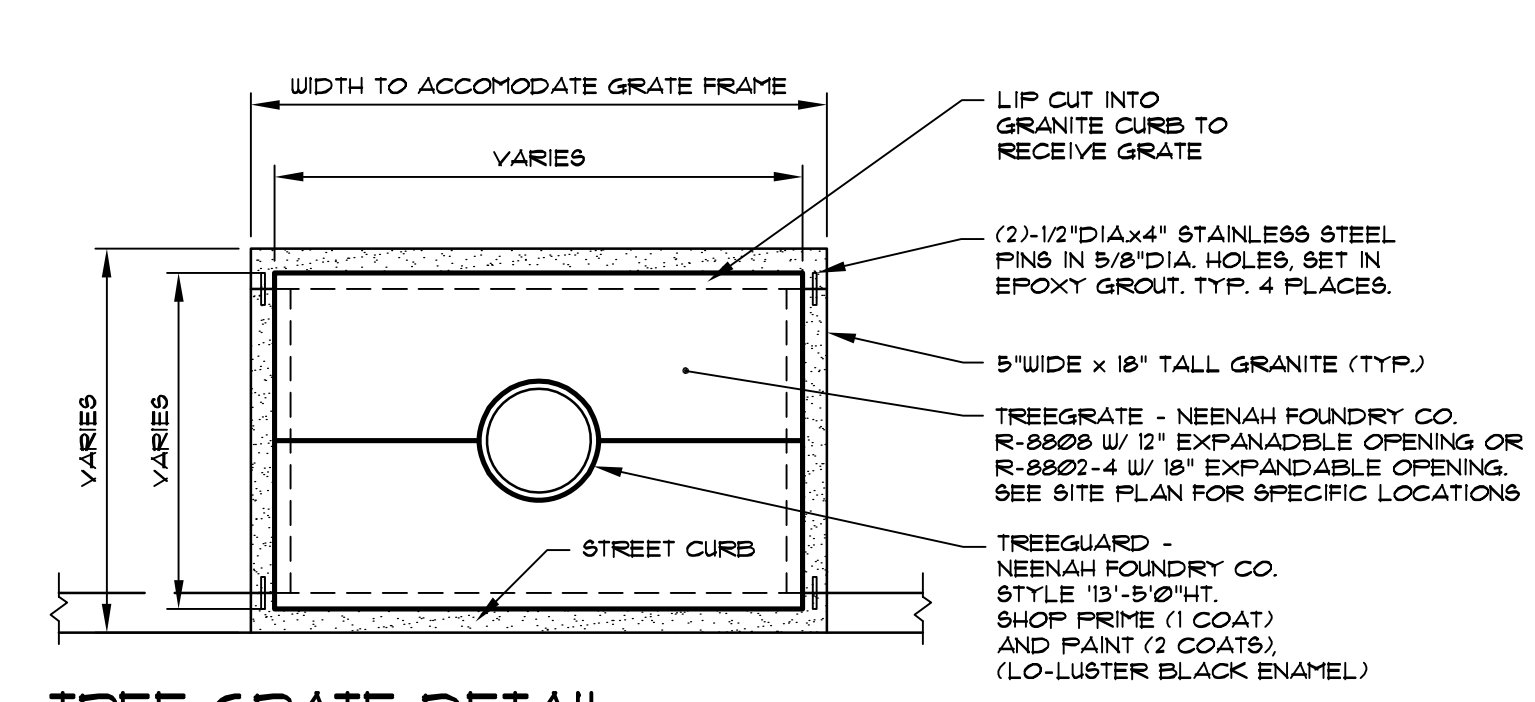
- NOTES:**
1. COMPACT GRAVEL SUBBASE, BASE COURSE TO 92% OF MAXIMUM DENSITY USING HEAVY ROLLER COMPACTION.
 2. CONTRACTOR SHALL SET GRADE STAKES MARKING SUBBASE AND FINISH GRADE ELEVATIONS FOR CONSTRUCTION REFERENCE.

TYP. PAVED DRIVEWAY SECTION
NOT TO SCALE

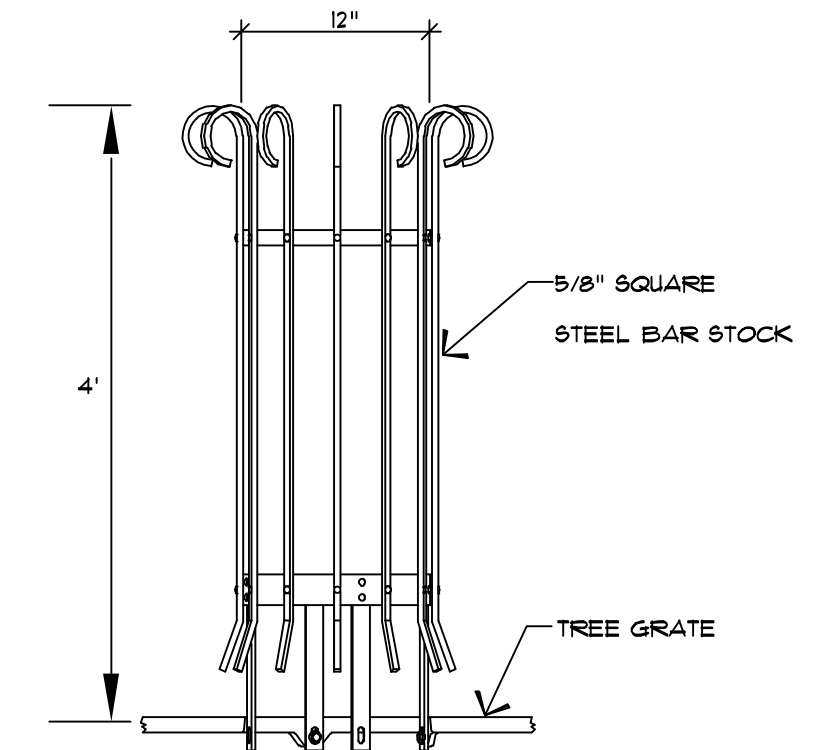


- NOTE:**
1. INSTALL 4.5\"/>
 2. CONCRETE SHALL HAVE AN F_{cr} OF 4,500 PSI AND SHALL RECEIVE 2 COATS OF WATER PENETRATING SEALANT.

CONCRETE PAVING
NOT TO SCALE

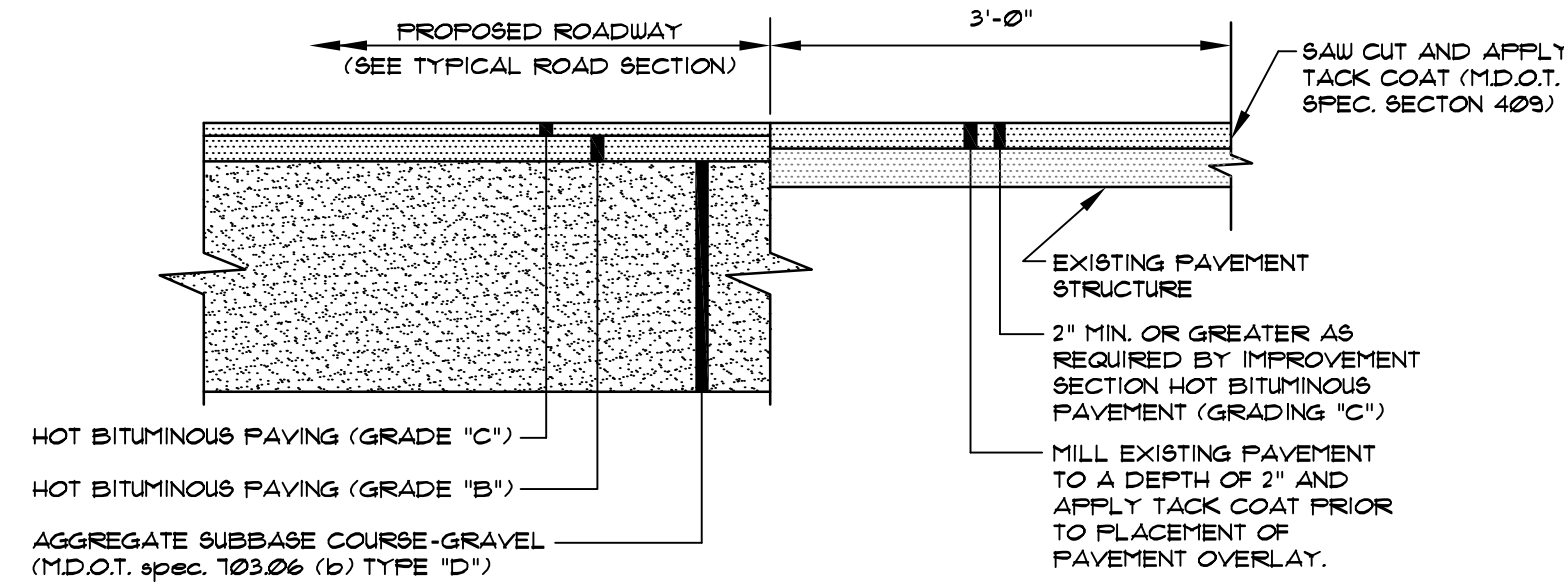


TREE GRATE DETAIL
NOT TO SCALE

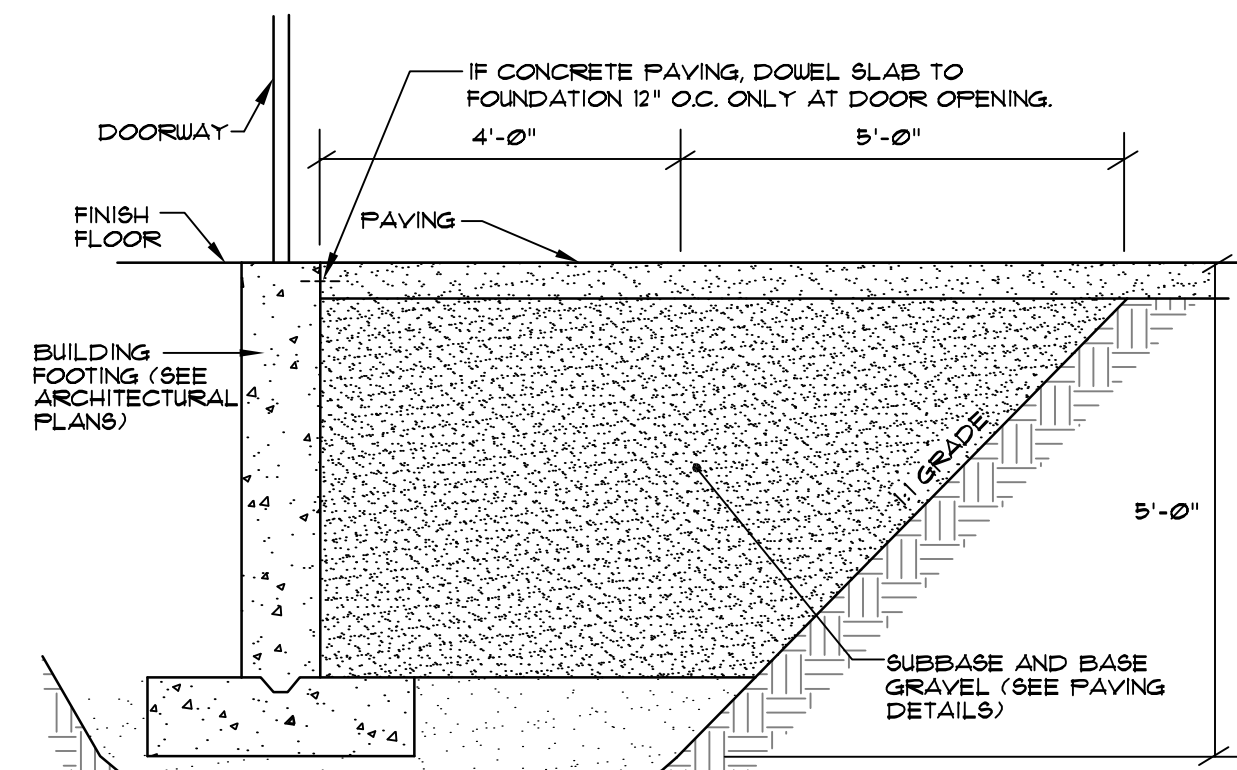


MATERIAL: ALL HOT ROLLED MILD STEEL
FINISH: PAINTED WITH ONE COAT LO-LUSTRE BLACK ENAMEL
Neenah Foundry Co. (nfc.com), Item: Type A, L4, 12\"/>

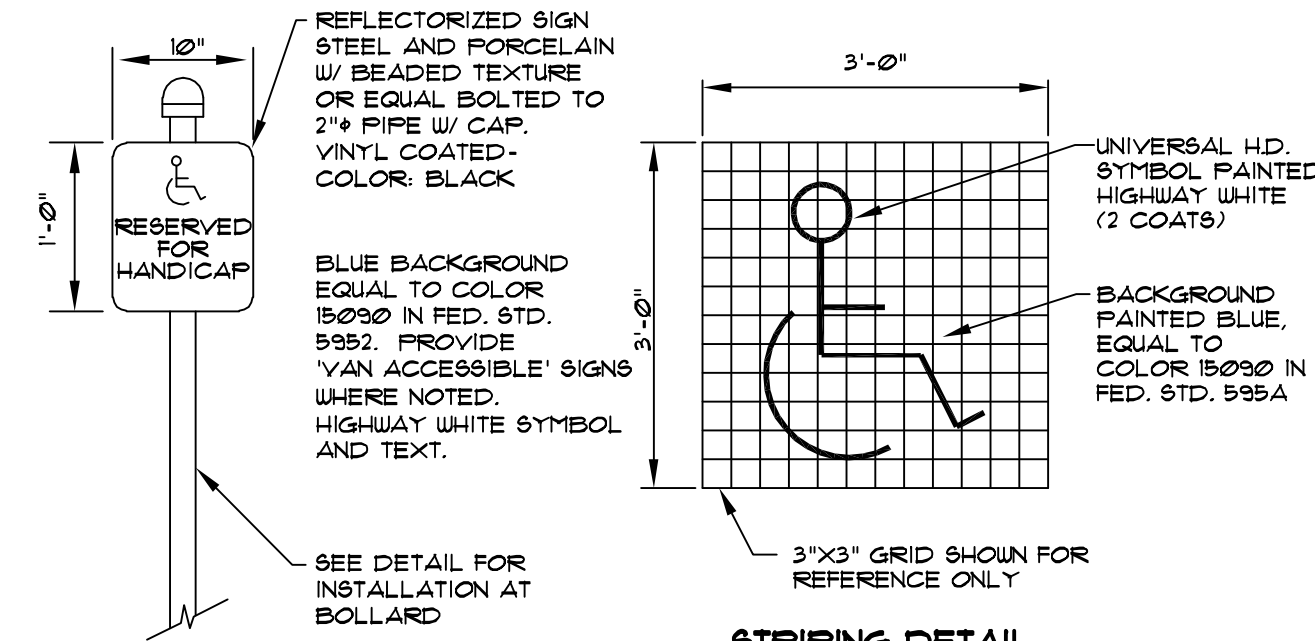
TYPICAL TREE GUARD
NOT TO SCALE



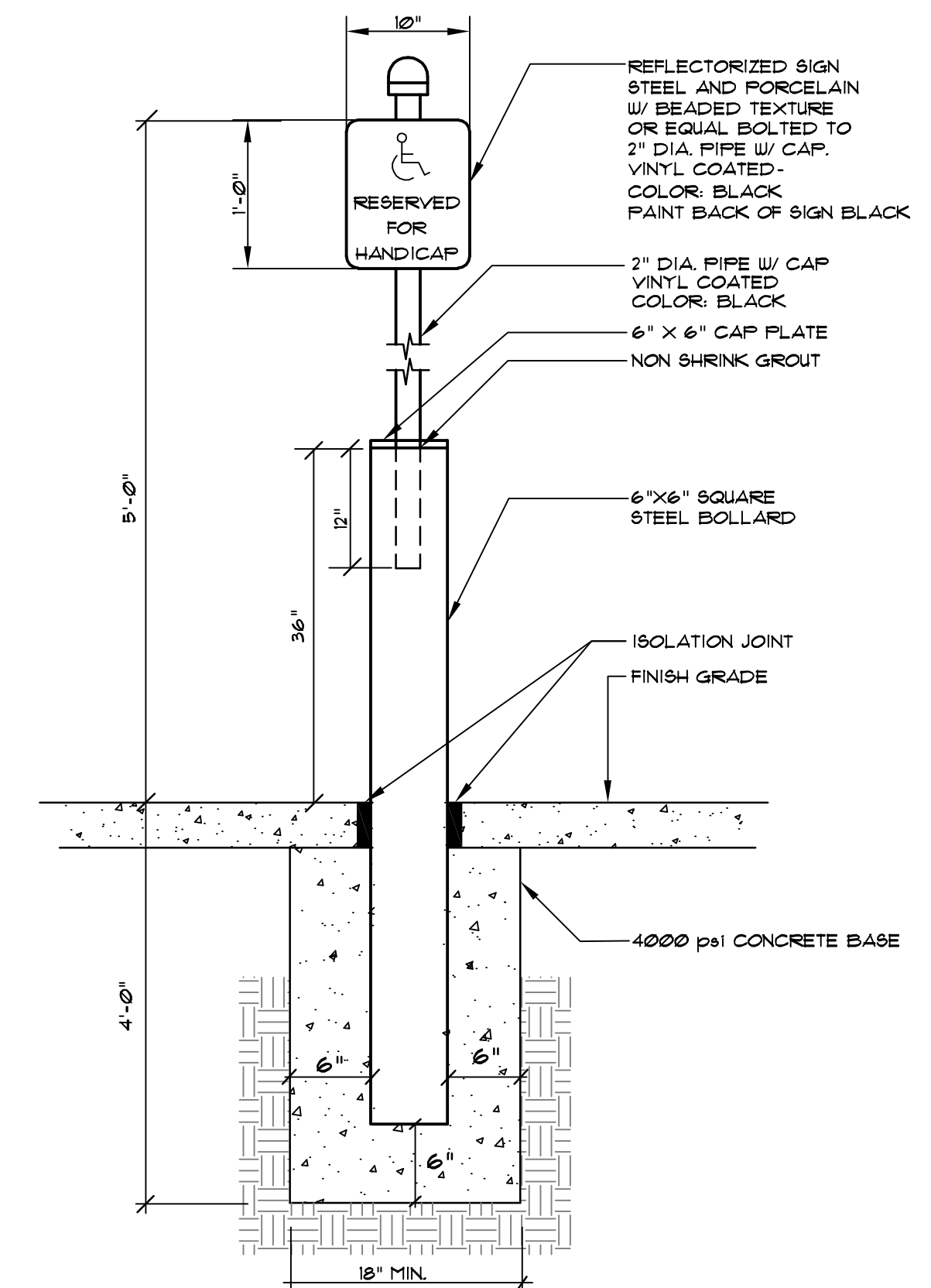
PAVEMENT SAW CUT DETAIL
NOT TO SCALE



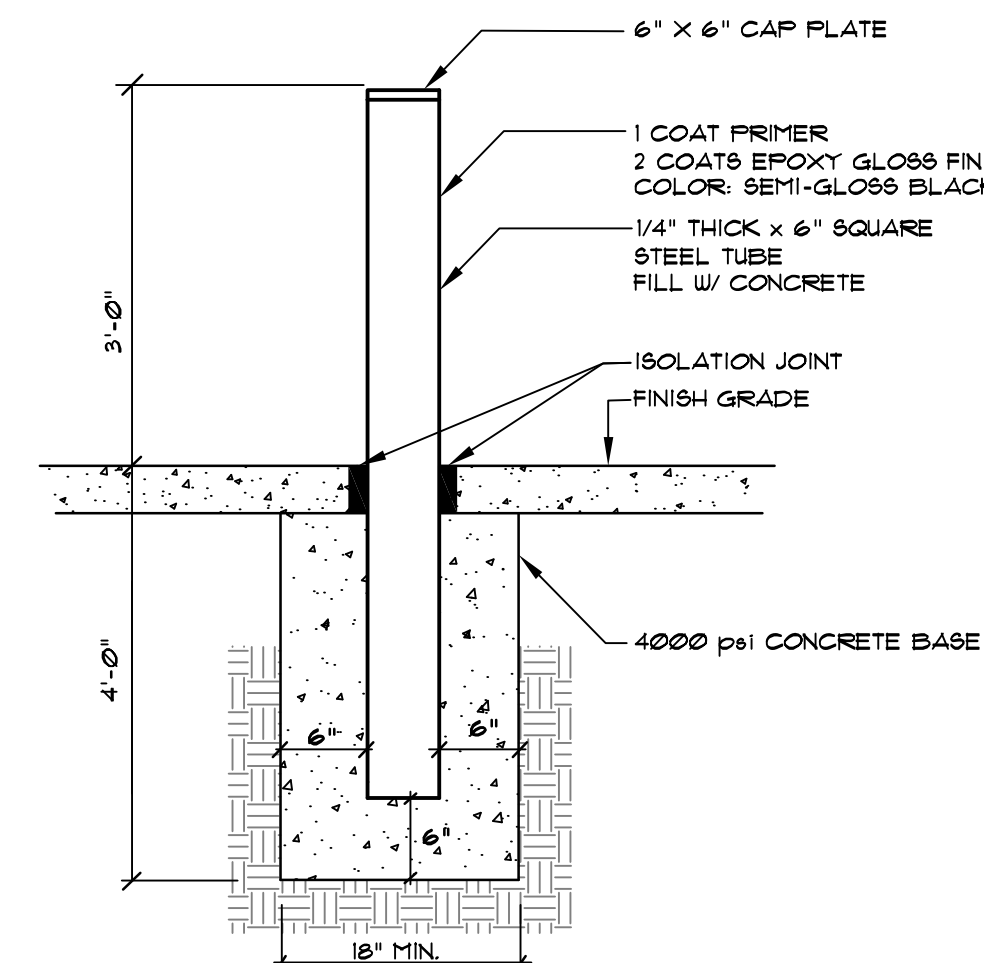
5' GRANULAR BASE @ DOOR THRESHOLD
NOT TO SCALE



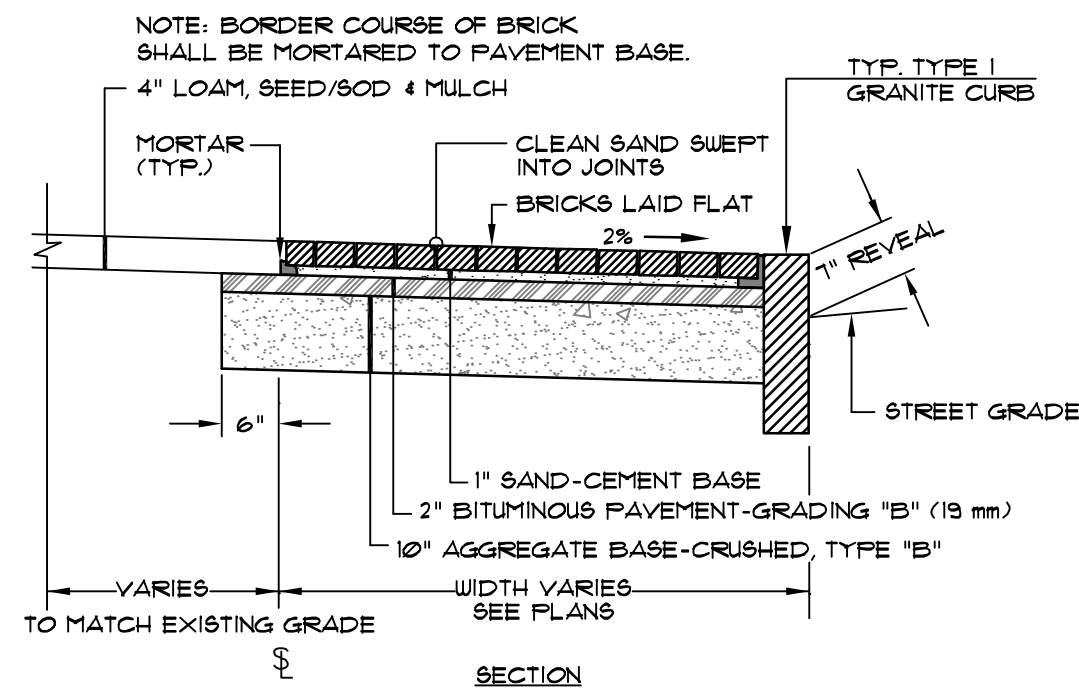
HANDICAP SIGNS AND STRIPING
NOT TO SCALE



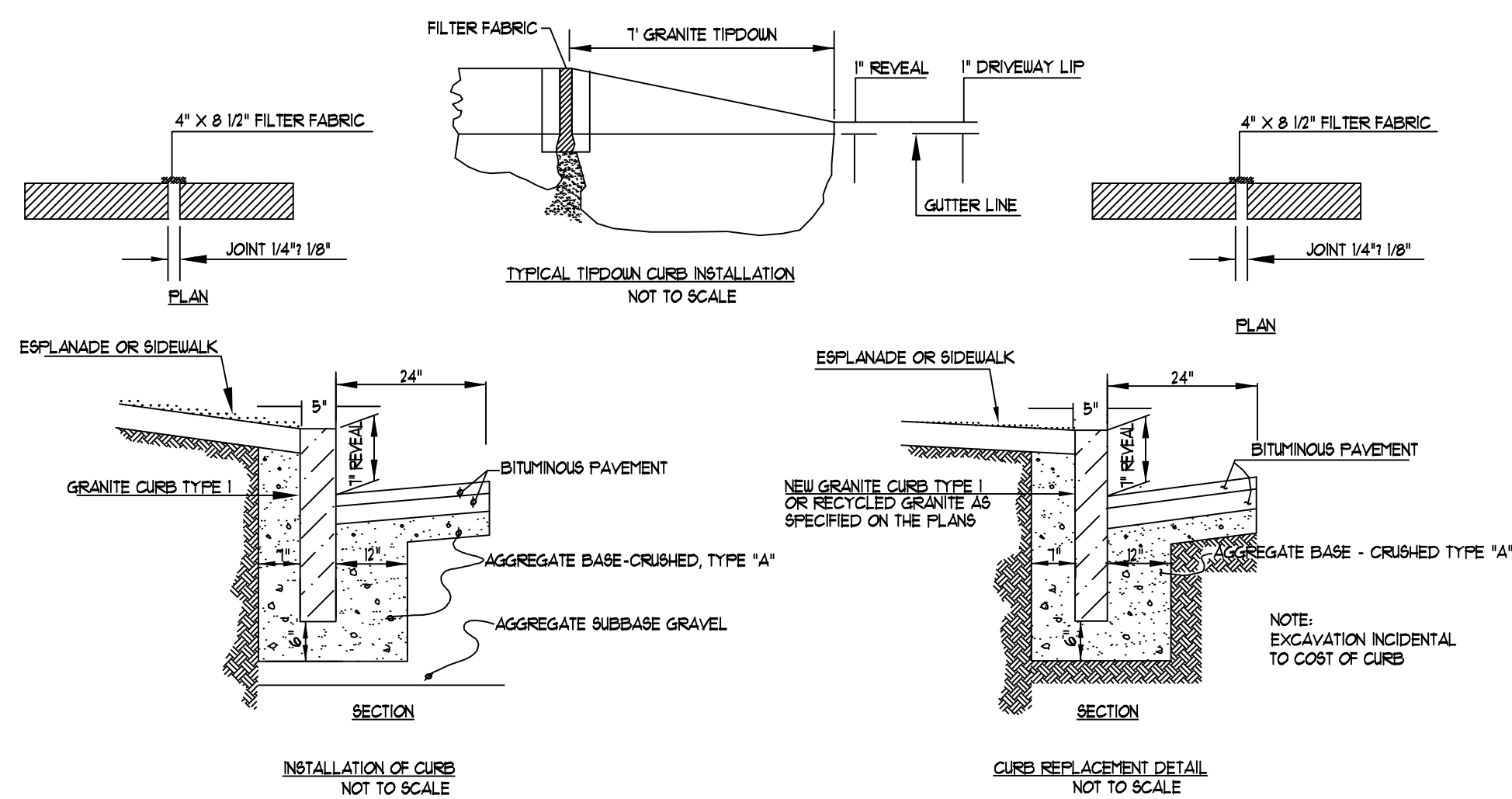
STEEL BOLLARD MOUNTED SIGN
NOT TO SCALE



STEEL BOLLARD
NOT TO SCALE



BRICK SIDEWALK DETAIL
NOT TO SCALE



NOTE: NO GRANITE CURB SECTIONS SHALL BE INSTALLED LESS THAN 4 FT. IN LENGTH.

INSTALLATION OF CURB, TYPE I
NOT TO SCALE

08-06-14	WTC	PRICING SET 1 AUGUST 6, 2014
07-22-14	WTC	ADDRESS COMMENTS PER WILLIAM CLARKE E-MAIL DATED 07-10-14
06-20-14	H	CITY SUBMITTAL 8
06-12-14	WTC	FOUNDATION PERMIT SET
01-07-13	WTC	CITY SUBMITTAL 7
10-15-13	E	CITY SUBMITTAL 6
10-03-13	D	CITY SUBMITTAL 5
	REV:	DATE:
	BY:	STATUS:

SEBAGO TECHNICALS
WWW.SEAGOTECHNICALS.COM
75 John Roberts Rd. - Suite 1A - 250 Granddard Rd. - Suite B
South Portland, ME 04106 Lewiston, ME 04240
Tel: 207-282-2100 Fax: 207-783-5888

PROJECT NO. 13251
FIELD BOOK DESIGN CHKD DRAWN
WTC WTC WTC MAL

DETAILS
OF:
SEAPORT LOFTS
NEWBURY/HANCOCK STREET
PORTLAND, MAINE
FOR:
113 NEWBURY STREET, LLC
35 FAY STREET, SUITE 107B
BOSTON, MA 02118-4320

DATE	SCALE
07-26-13	AS SHOWN