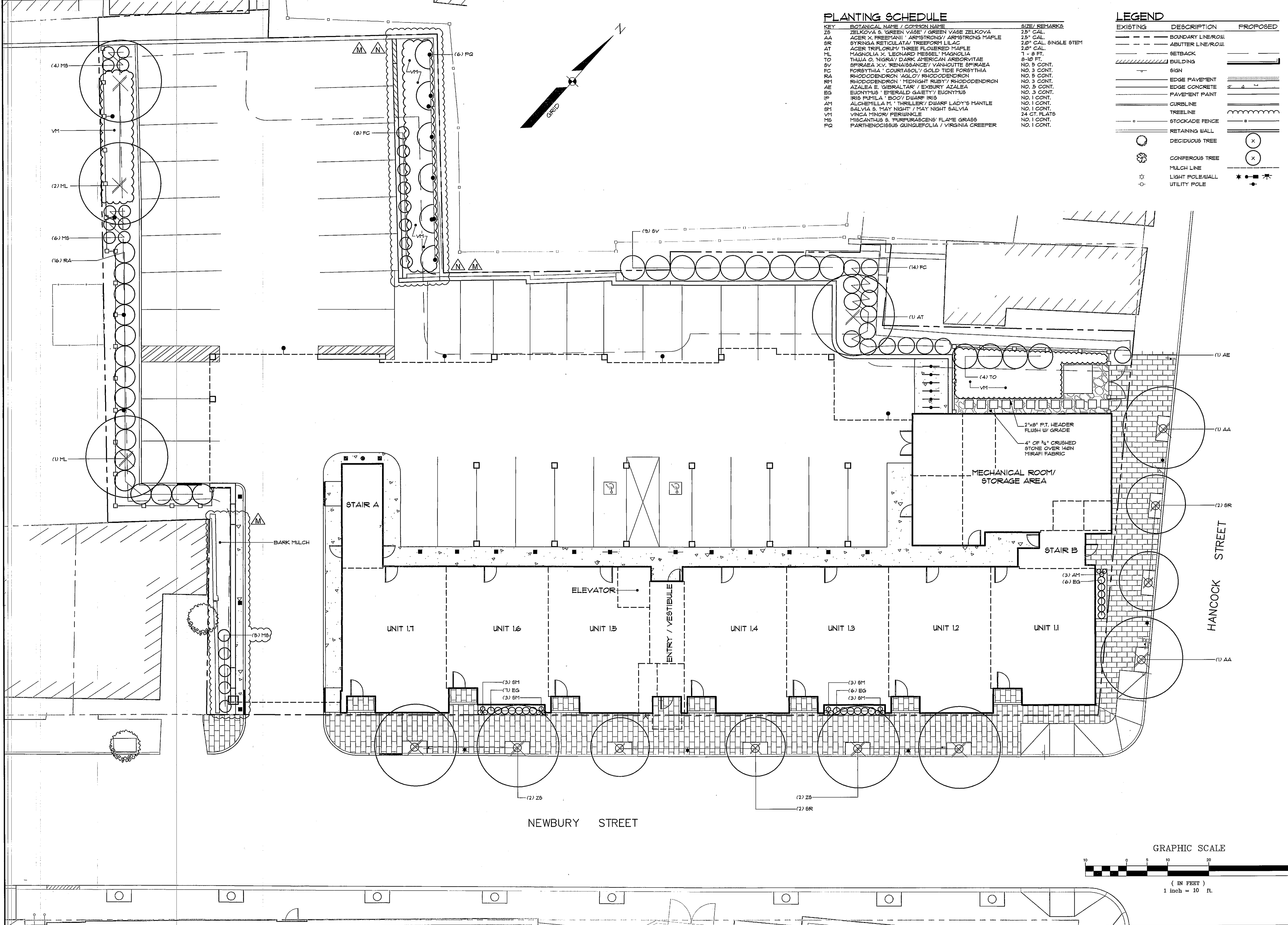


**PLANTING SCHEDULE**

KEY	BOTANICAL NAME / COMMON NAME	SIZE/REMARKS
ZS	ZELKOVA S. 'GREEN VASE' / GREEN VASE ZELKOVA	25" CAL.
AA	ACER X. 'FREETMANII' / ARMSTRONG / ARMSTRONG MAPLE	25" CAL.
SR	SYRINGA RETICULATA / TREEFROTH LILAC	20" CAL. SINGLE STEM
AT	ACER TRIFLORUM / THREE FLOURED MAPLE	20" CAL.
ML	MAGNOLIA X. 'LEONARD MESSEL' / MAGNOLIA	1" - 8 FT.
TO	TALIA O. 'NIGRA' / DARK AMERICAN ARBORVITAE	8-10 FT.
SV	SPIRAEA X.V. 'RENAISSANCE' / VAN-OUTTE SPIRAEA	NO. 5 CONT.
FC	FORSYTHIA 'COURTASOL' / GOLD TIDE FORSYTHIA	NO. 3 CONT.
RA	RHODODENDRON 'AGLO' / RHODODENDRON	NO. 5 CONT.
RY	RHODODENDRON 'MIDNIGHT RUBY' / RHODODENDRON	NO. 3 CONT.
AE	AZALEA E. 'GIBRALTAR' / EXBURY AZALEA	NO. 5 CONT.
EG	EUCONYMUS 'EMERALD GAUITY' / EUCONYMUS	NO. 3 CONT.
IP	IRIS 'PUNILA' 'BOO' / DWARF IRIS	NO. 1 CONT.
AM	ALCHEMILLA M. 'THRILLER' / DWARF LADY'S MANTLE	NO. 1 CONT.
SM	SALVIA S. 'MAY NIGHT' / MAY NIGHT SALVIA	NO. 1 CONT.
VM	VINCA MINOR / PERIWINKLE	24 CT. PLANTS
MS	MISCANTHUS S. 'PURPURASCENS' / FLAME GRASS	NO. 1 CONT.
PQ	PARTHENOCISSUS QUINQUEFOLIA / VIRGINIA CREEPER	NO. 1 CONT.

**LEGEND**

EXISTING	DESCRIPTION	PROPOSED
---	BOUNDARY LINE/ROWL	---
---	ABUTTER LINE/ROWL	---
---	SETBACK	---
▨	BUILDING	▨
—	SIGN	—
—	EDGE PAVEMENT	—
—	EDGE CONCRETE	—
—	PAVEMENT PAINT	—
—	CURELINE	—
—	TREELINE	—
—	STOCKADE FENCE	—
—	RETAINING WALL	—
○	DECIDUOUS TREE	○
⊗	CONIFEROUS TREE	⊗
—	MULCH LINE	—
☆	LIGHT POLE/WALL	☆
○	UTILITY POLE	○



**LANDSCAPE PLAN**  
 OF:  
**SEAPORT LOFTS**  
 NEWBURY / HANCOCK STREET  
 PORTLAND, MAINE  
 FOR:  
**113 NEWBURY STREET, LLC**  
 35 FAY STREET, SUITE 107B  
 BOSTON, MA 02118-4320

**REVISIONS**

DATE	DESCRIPTION	BY
12-31-14	MISCELLANEOUS REVISIONS	WTC
12-08-14	MISCELLANEOUS REVISIONS	WTC
11-18-14	REVISED SITE LIGHTING / ISSUE CK-02	WTC
09-10-14	ISSUE CK-01	WTC
08-06-14	PRICING SET 1 / AUGUST 6, 2014	WTC
07-22-14	ADDRESS COMMENTS PER WILLIAM CLARKE E-MAIL DATED 07-10-14	WTC
06-20-14	CITY SUBMITTAL B	WTC

STATUS: **CITY SUBMITTAL B**

BY: **WTC**

DATE: **06-20-14**

THIS PLAN SHALL NOT BE MODIFIED WITHOUT WRITTEN PERMISSION FROM SEBAGO TECHNICS, INC. ANY ALTERATIONS AUTHORIZED OR OTHERWISE, SHALL BE AT THE USER'S SOLE RISK AND WITHOUT LIABILITY TO SEBAGO TECHNICS, INC.

**SEBAGO TECHNICS**  
 WWW.SEBAGOTECHNICS.COM  
 76 John Roberts Rd., Suite 1A  
 South Portland, ME 04106  
 Phone: 207.765.5666  
 Fax: 207.765.5668

PROJECT NO.: **13251** | FIELD BOOK | DESIGN | CHECK | DRAWN | MAL  
 WTC | WTC | WTC | WTC

**DATE** 07-26-13 | **SCALE** 1" = 10'

**SHEET 7 OF 12**