

CPVC CURING TIMES

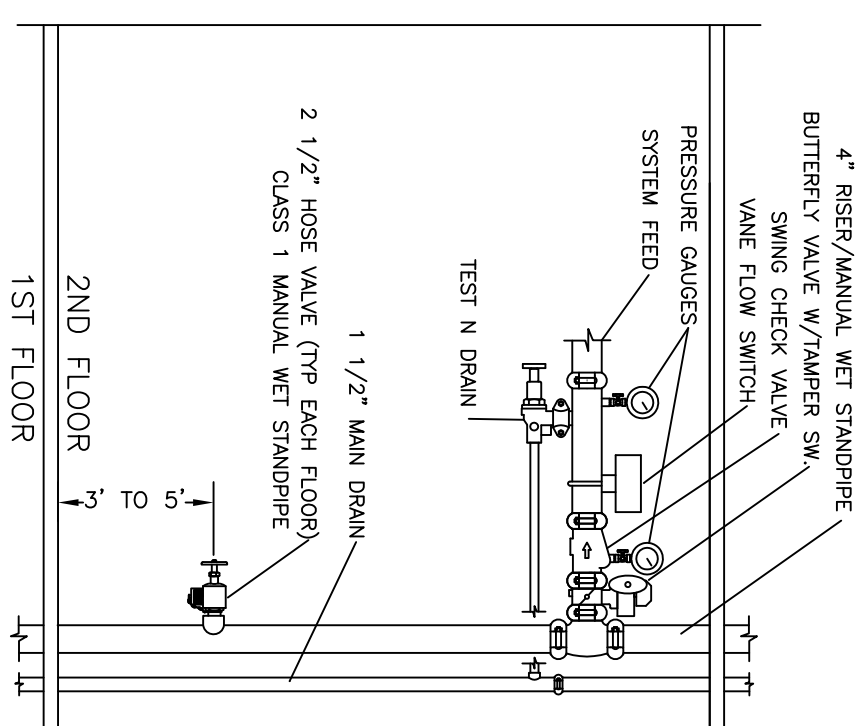
FOR TFP-400, TFP-500
VICTALUX #899 & SPEARS FS-5

CURE TIMES WITH ONE STEP SOLVENT CEMENT	PIPE SIZE (INCHES)	60°F TO 70°F	70°F TO 75°F	75°F TO 80°F	80°F TO 85°F	85°F TO 90°F	90°F TO 95°F	95°F TO 100°F
AMBIENT TEMPERATURE DURING CURE PERIOD	3/4"	1-1/4"	1-1/2"	2"	2-1/2"	3"		
	1"	1-1/2"	2"	2-1/2"	3"			
	1-1/2"	2"	2-1/2"	3"				
	2"	2-1/2"	3"					
	2-1/2"	3"						
	3"							

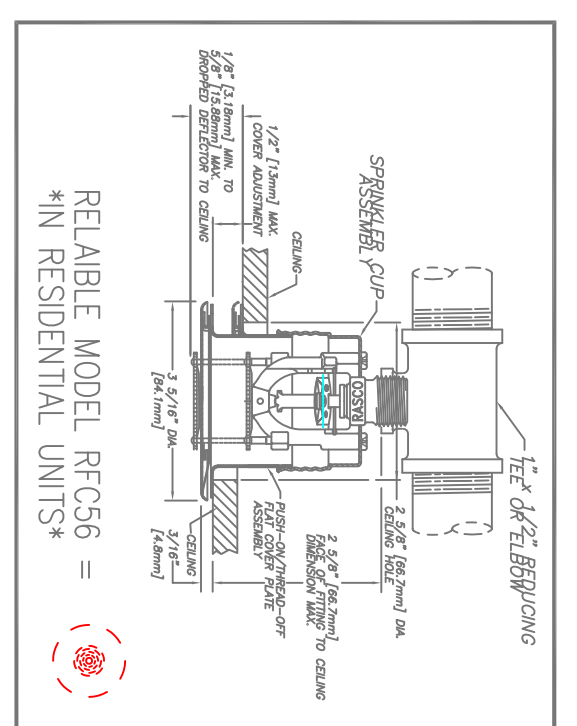
NOTE: FOR THESE SIZES, THE SOLVENT CEMENT CAN BE APPLIED AT TEMPERATURES BELOW THE LISTED. THE SPRINKLER SYSTEM ABOVE AND ALLOWED TO CURE PER THE ABOVE RECOMMENDATIONS PRIOR TO PRESSURE TESTING.

CPVC HANGING NOTES

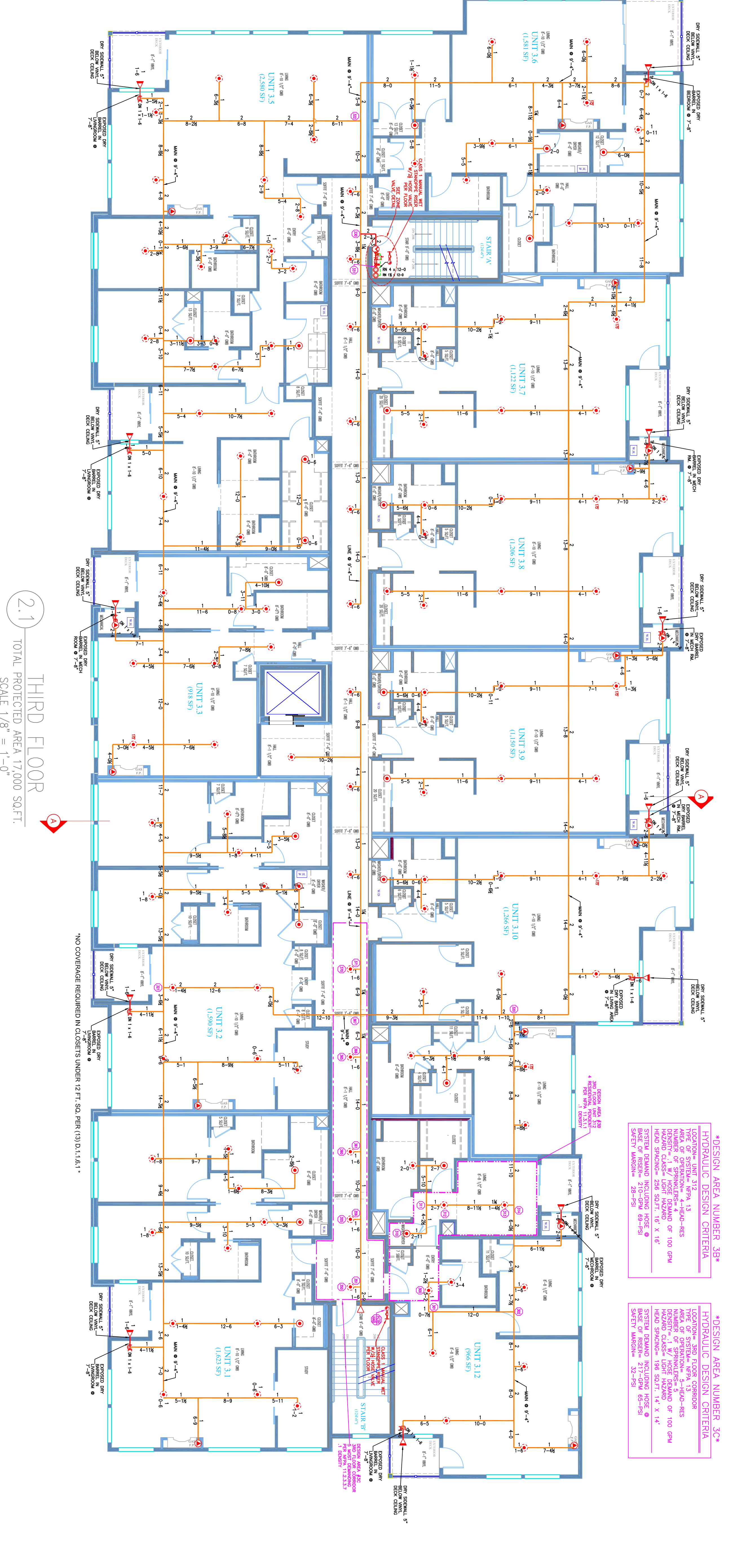
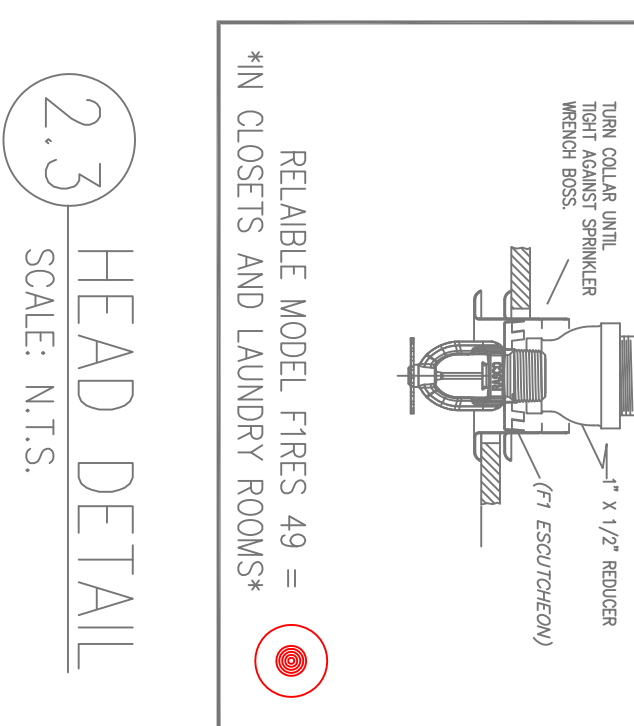
CPVC MAXIMUM SUPPORT SPACING (FT)	NOMINAL PIPE SIZE	1"	1-1/2"	2"	2-1/2"	3"
PIPE SIZE	3/4"	1"	1-1/2"	2"	2-1/2"	3"
HANGER SPACING	5'-1/2"	6'	6'-1/2"	7'	8'	10'



2.2 STAIR A ZONE VALVE DETAIL
SCALE: N.T.S.



2.3 HEAD DETAIL
SCALE: N.T.S.

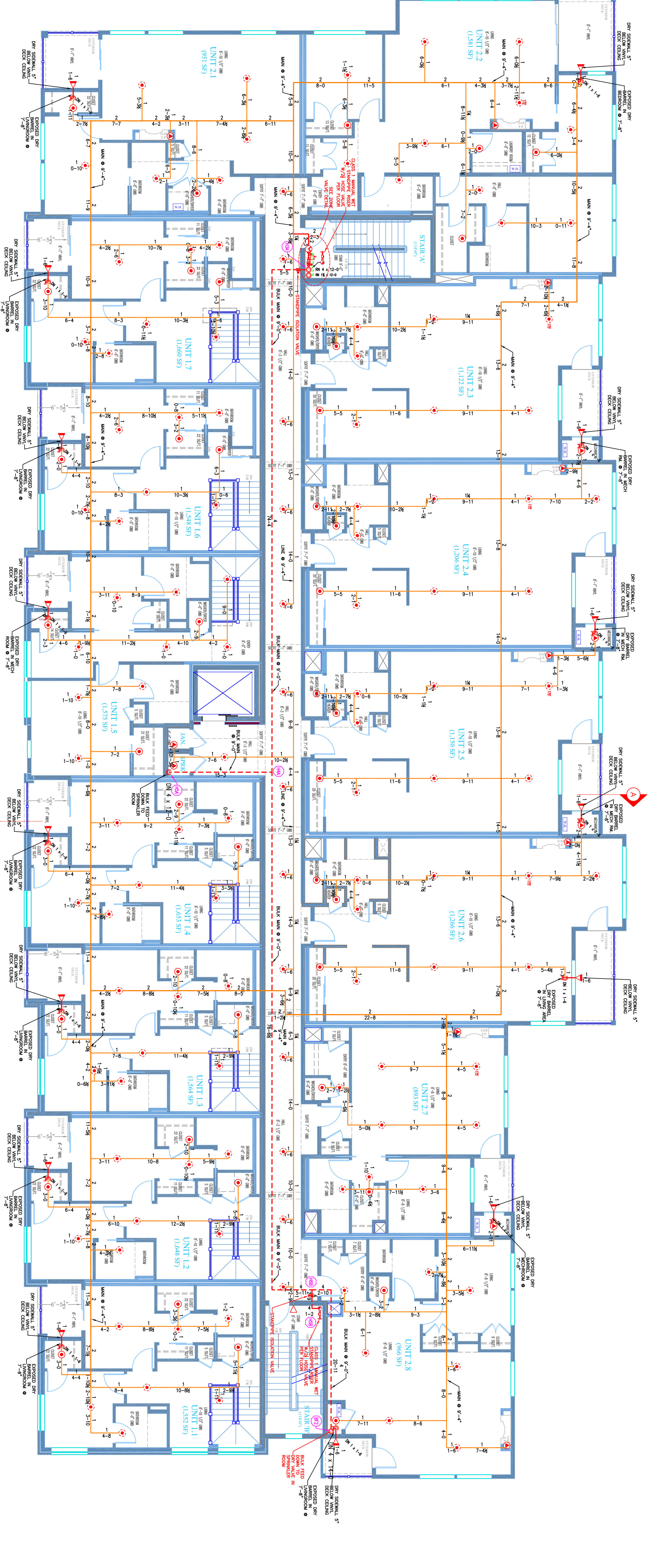


2.1 THIRD FLOOR
TOTAL PROTECTED AREA 17,000 SQ.FT.
SCALE 1/8" = 1'-0"

DESIGN AREA NUMBER 3B*
HYDRAULIC DESIGN CRITERIA
AREA OF PROTECTION - 4,400-SQ-FTS
DESIGN FLOW - 1.17 GPM
HEAD LOSS - 1.17 FEET
HEAD SPACING - 188 SQ.FT. 14' X 14'
SAFETY MARGIN - 25.2%

DESIGN AREA NUMBER 3C*
HYDRAULIC DESIGN CRITERIA
AREA OF PROTECTION - 2,400-SQ-FTS
DESIGN FLOW - 1.17 GPM
HEAD LOSS - 1.17 FEET
HEAD SPACING - 188 SQ.FT. 14' X 14'
SAFETY MARGIN - 25.2%

NO COVERAGE REQUIRED IN CLOSETS UNDER 12 FT. SQ. PER (D) 1.1.4.1.



2 SECOND FLOOR
TOTAL PROTECTED AREA 17,000 SQ.FT.
SCALE 1/8" = 1'-0"

NO COVERAGE REQUIRED IN CLOSETS UNDER 12 FT. SQ. PER (D) 1.1.4.1.

