



MARK MUELLER ARCHITECTS
A.I.A.

100 Commercial Street
Suite 205
Portland, Maine 04101
Phone: 207.774.9057
Email: rfm@muellerarchitects.com

© COPYRIGHT 2014
MARK MUELLER ARCHITECTS

SEAPORT LOFTS
113 NEWBURY STREET
PORTLAND, MAINE 04101

Condominiums at

FIRST FLOOR PLAN

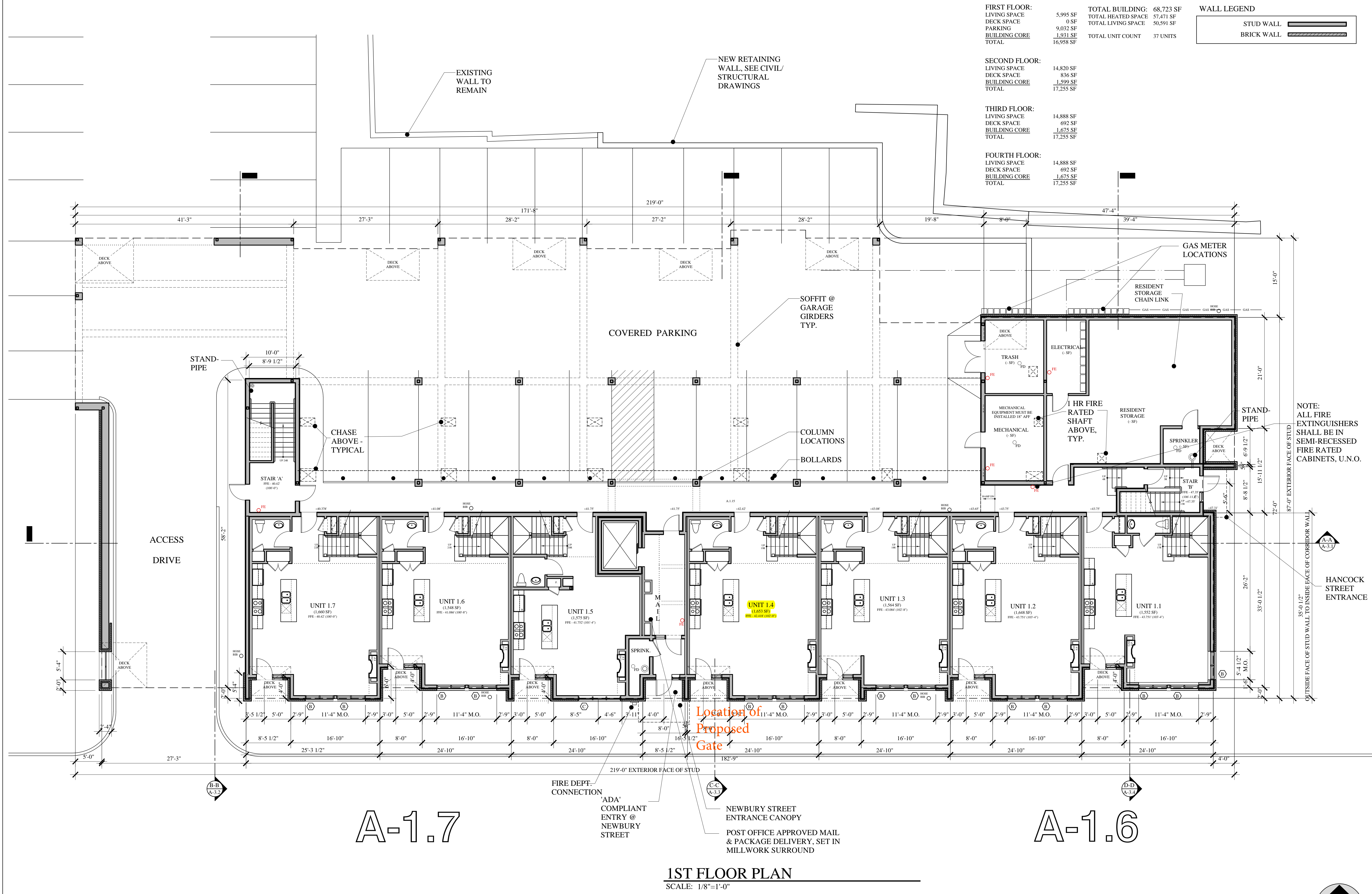
REVISIONS
DATE: 06.12.2014
PROJECT: SEAPORT LOFTS
DRAWN BY: ...
CHECK BY: MLM

A-1.1

FIRST FLOOR:		TOTAL BUILDING: 68,723 SF
LIVING SPACE	5,995 SF	TOTAL HEATED SPACE 57,471 SF
DECK SPACE	0 SF	TOTAL LIVING SPACE 50,591 SF
PARKING	9,032 SF	
BUILDING CORE	1,931 SF	TOTAL UNIT COUNT: 37 UNITS
TOTAL	16,958 SF	
SECOND FLOOR:		
LIVING SPACE	14,820 SF	
DECK SPACE	836 SF	
BUILDING CORE	1,599 SF	
TOTAL	17,255 SF	
THIRD FLOOR:		
LIVING SPACE	14,888 SF	
DECK SPACE	692 SF	
BUILDING CORE	1,675 SF	
TOTAL	17,255 SF	
FOURTH FLOOR:		
LIVING SPACE	14,888 SF	
DECK SPACE	692 SF	
BUILDING CORE	1,675 SF	
TOTAL	17,255 SF	

WALL LEGEND

STUD WALL	
BRICK WALL	



A-1.7

A-1.6

1ST FLOOR PLAN
SCALE: 1/8"=1'-0"

90% PRICING SET: AUGUST 27, 2014

