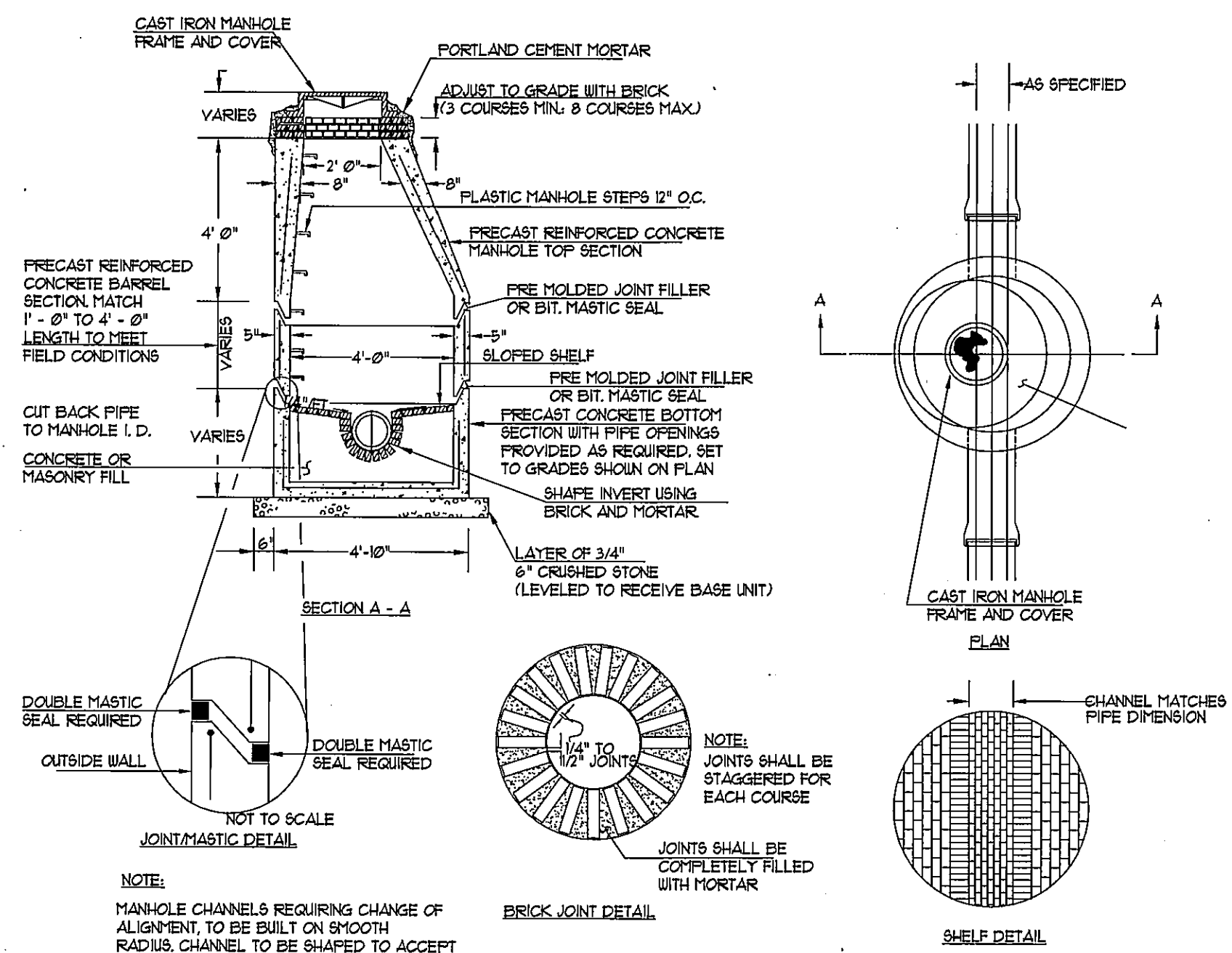


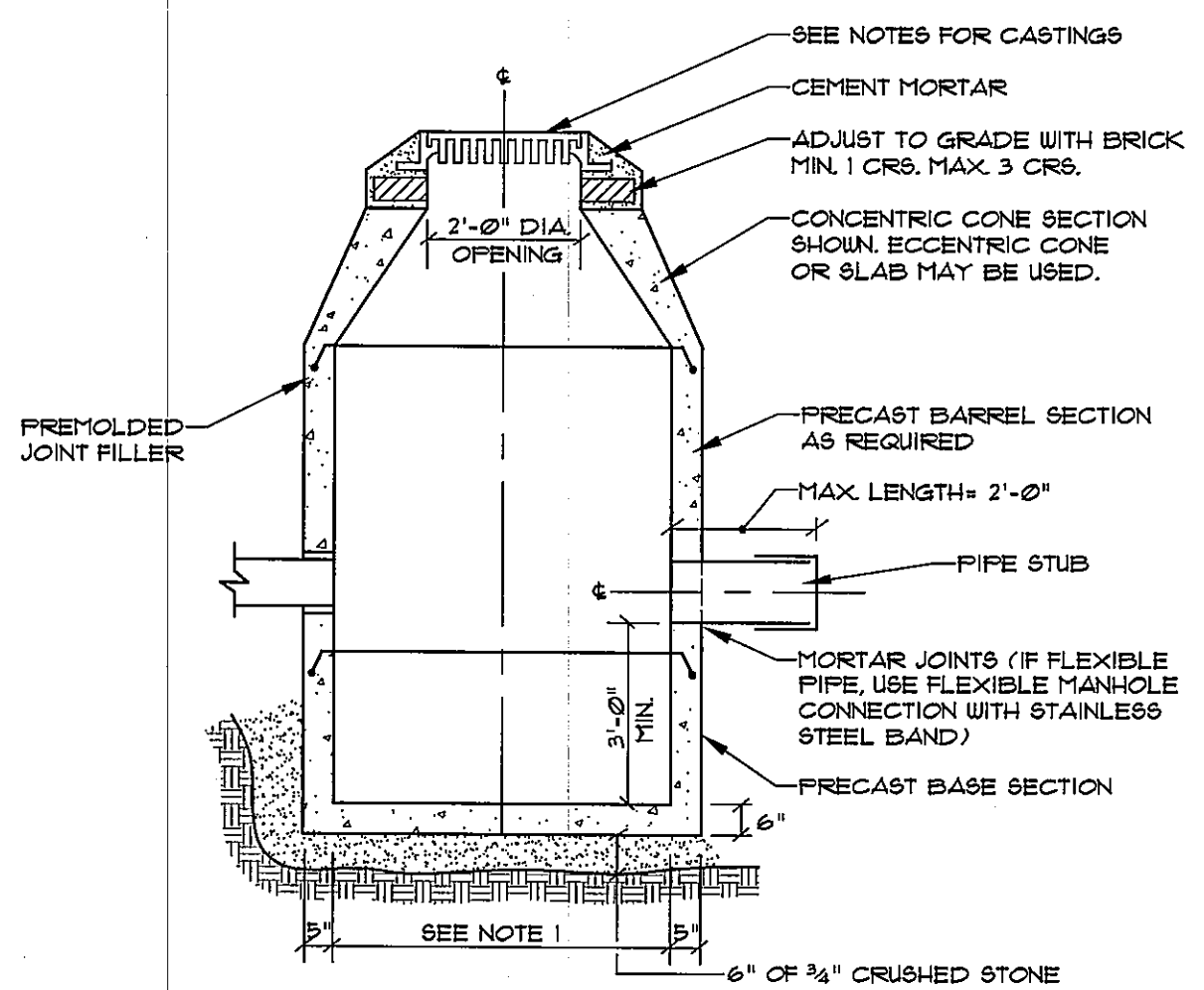
TYPICAL PAVEMENT GRADING ON SLOPES FOR CATCH BASIN AND INLET
NOT TO SCALE

GENERAL NOTES FOR MANHOLES AND CATCH BASINS

- ALL CONCRETE SHALL BE CLASS "A" AND HAVE A MINIMUM ULTIMATE COMPRESSIVE STRENGTH OF 4000-150 PER SQ. INCH AT THE END OF 28 DAYS, UNLESS OTHERWISE NOTED.
- PRECAST REINFORCED CONE BARREL MANUFACTURED PER ASTM SPEC. C-418-01.
- SEWER BRICK SHALL CONFORM TO ASTM SPEC. DESIGNATE ON C-32-63, GRADE MA AND SA.
- ALL MANHOLES SHALL HAVE A BITUMINOUS WATERPROOFING APPLIED TO THE EXTERIOR SURFACE. IF CONSTRUCTED OF BRICK MASONRY, SURFACE SHALL BE FLASTERED WITH A SMOOTH MORTAR FINISH 3/8" THICK AFTER THE MORTAR HAS SET, THE SURFACE SHALL BE WATERPROOFED AS REQUIRED BY SUPPLEMENTAL SPECIFICATIONS SECTION 004.
- CASTINGS SHALL CONFORM TO ASTM DESIGNATION A48-CLASS 35. ALL PARTS OF CASTINGS EXCEPT FINISHED SURFACE, SHALL RECEIVE A COAT OF COAL TAR PITCH VARNISH OR ASPHALTUM PAINT WHICH SHALL BE SMOOTH AND TOUGH BUT NOT BRITTLE.
- MANHOLES MAY BE CONSTRUCTED OF MASONRY, PRECAST REINFORCED CONCRETE, OR CAST IN PLACE.
- ALL PRECAST MANHOLES AND CATCH BASINS SHALL BE IDENTIFIED BY STATION AND OFFSET PAINTED ON THE SIDE OF THE STRUCTURE BY THE MANUFACTURER.
- EXISTING MANHOLES, CATCH BASINS, FRAMES, AND COVERS SHALL BE SALVAGED BY THE CONTRACTOR AND SHALL REMAIN THE PROPERTY OF THE CITY OF PORTLAND.
- ALL WORK WITHIN THE STREET RIGHT-OF-WAY SHALL CONFORM TO THE CITY OF PORTLAND TECHNICAL MANUAL STANDARDS.
- ALL CATCH BASIN OUTLET PIPES SHALL BE INSTALLED WITH AN OIL AND FLOATABLES SEPARATOR. THE SEPARATOR SHALL BE THE "SNOUT" OR AN APPROVED EQUAL AND INSTALLED IN ACCORDANCE WITH MANUFACTURER'S RECOMMENDATIONS.
- MANHOLE FRAME, GRATE AND COVERS SHALL COMPLY WITH CITY OF PORTLAND TECHNICAL STANDARDS AND REQUIREMENTS.

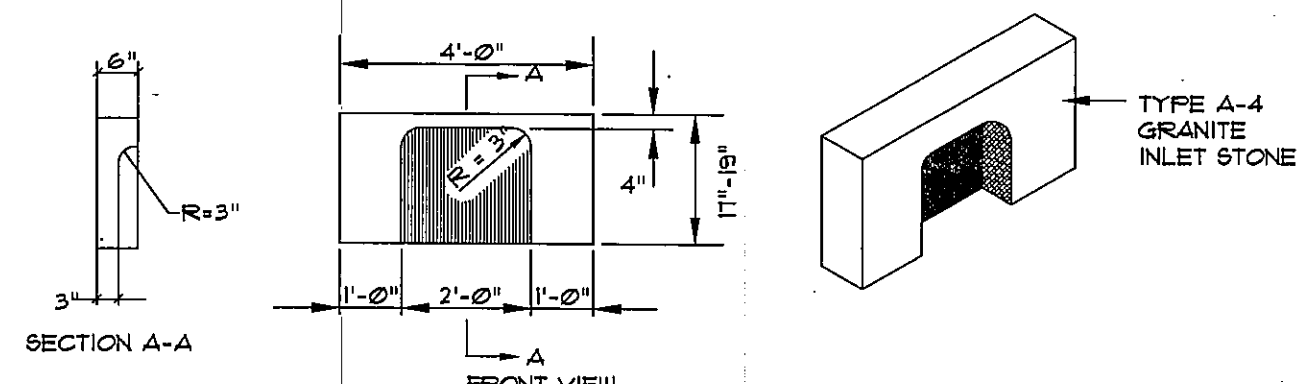


PRECAST CONCRETE MANHOLE TYPE "A"
NOT TO SCALE

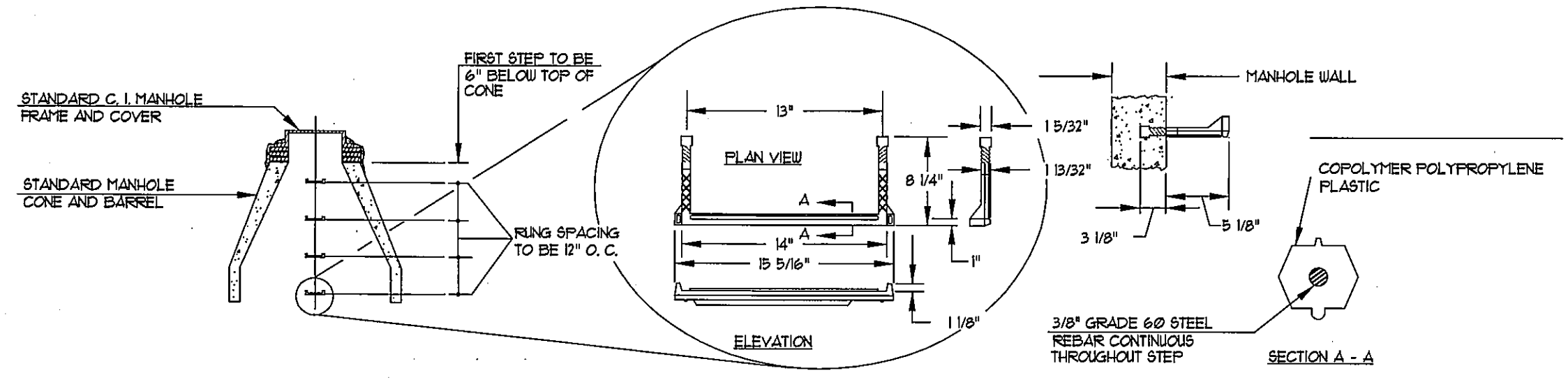


- NOTES:**
- 4'-0" I.D. TYPICAL. SOME STRUCTURES MAY REQUIRE LARGER I.D. PROVIDE SHOP DRAWINGS.
 - DRAINAGE STRUCTURES TO BE DESIGNED FOR H-20 LOADING.
 - PIPE SIZES AND INVERTS AS NOTED ON PLANS.
 - CATCH BASIN FRAME AND GRATE TO BE EAST JORDAN FOUNDRY B250, OR APPROVED EQUAL.
 - DRAINAGE MANHOLE FRAME AND COVER TO BE EAST JORDAN FOUNDRY 102, TYPE A, OR APPROVED EQUAL. COVER SHALL BE MARKED "DRAIN".
 - ALL DRAIN MANHOLES SHALL HAVE SHELVES AND CHANNELS INSTALLED.

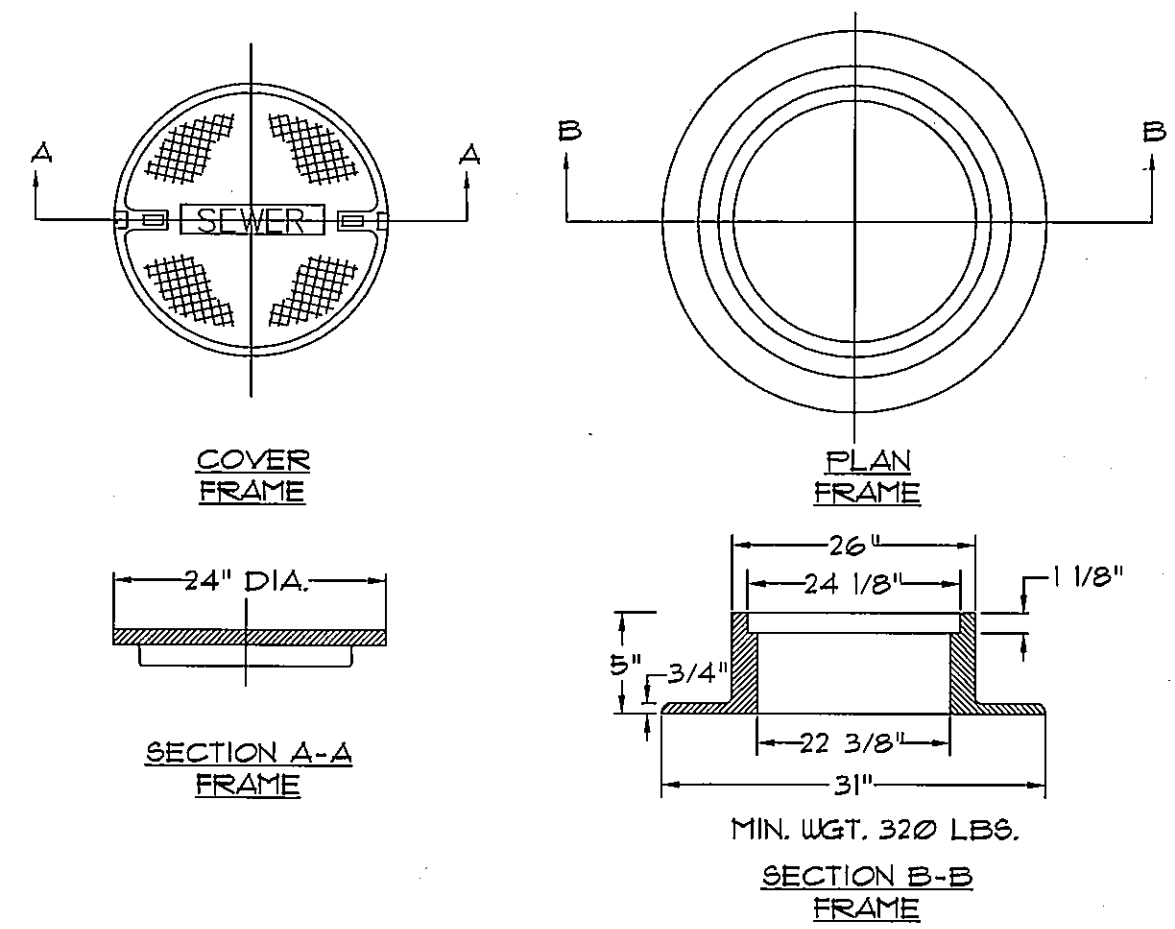
TYPICAL DRAINAGE MANHOLE/CATCH BASIN
NOT TO SCALE



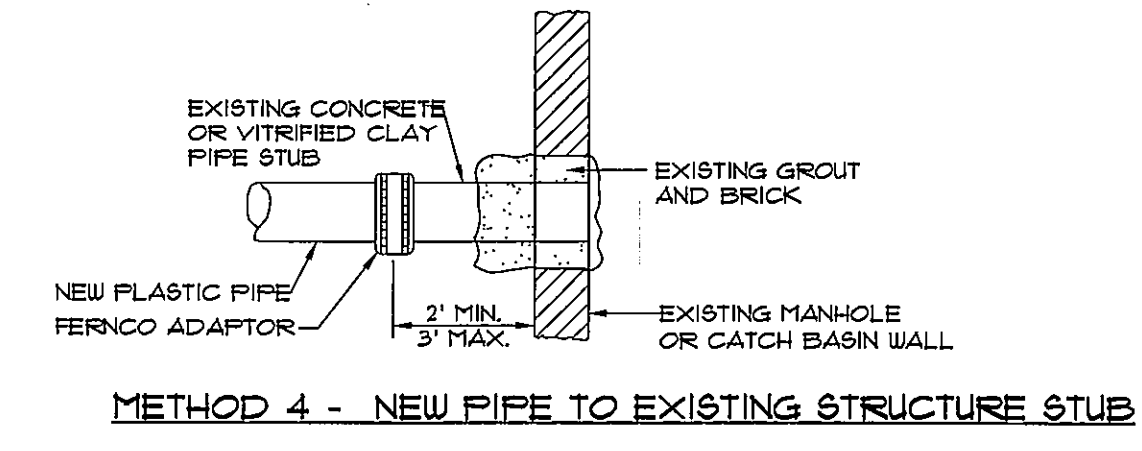
TYPE A-4 GRANITE CATCH BASIN INLET STONE DETAIL
(FOR EXISTING BASIN AT HANCOCK STREET)
NOT TO SCALE



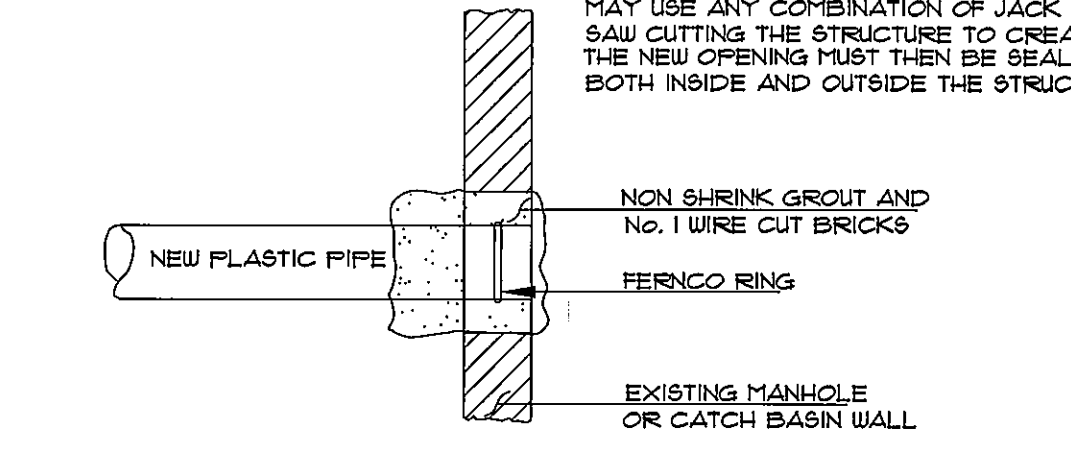
PLASTIC MANHOLE STEPS
NOT TO SCALE



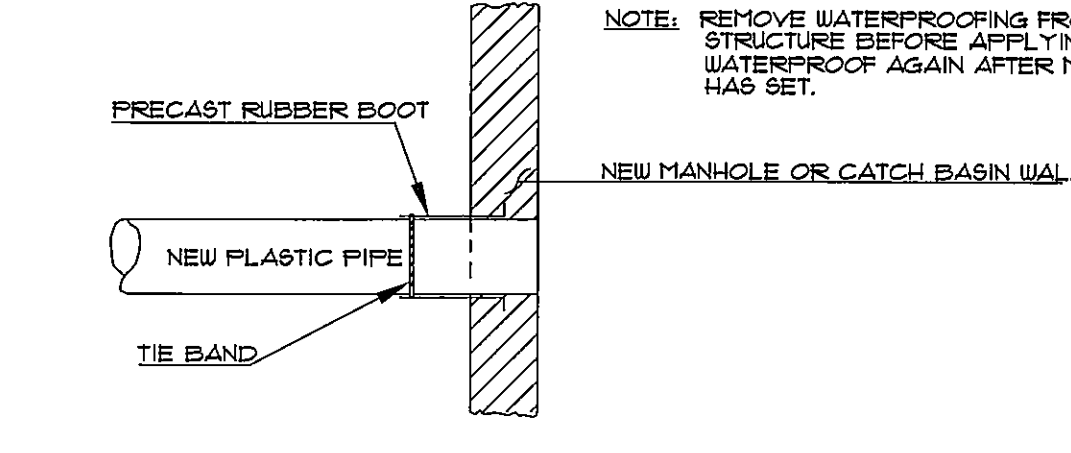
CAST IRON MANHOLE COVER AND FRAME
NOT TO SCALE



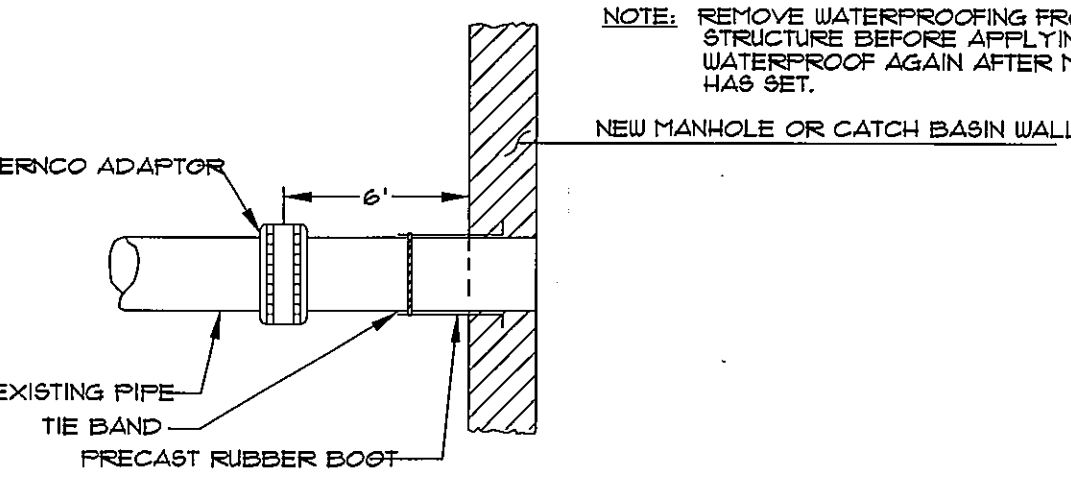
METHOD 4 - NEW PIPE TO EXISTING STRUCTURE STUB



METHOD 3 - NEW PIPE INTO EXISTING STRUCTURE

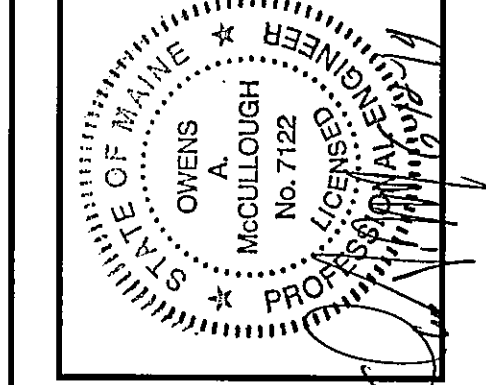


METHOD 2 - NEW CONSTRUCTION



METHOD 1 - EXISTING PIPE INTO NEW STRUCTURE

PLASTIC PIPE CONNECTION DETAIL
NOT TO SCALE



FOUNDATION PERMIT SET	06-12-14	WTC
CITY SUBMITTAL 7	01-07-13	WTC
CITY SUBMITTAL 6	10-15-13	WTC
CITY SUBMITTAL 5	10-03-13	WTC
CITY SUBMITTAL 4	09-17-13	WTC
CITY SUBMITTAL 3	09-03-13	WTC
SUBMIT SITE PLAN APPLICATION TO CITY	07-29-13	WTC
DATE:		BY:
STATUS:		REV:

SEBAGO TECHNICS
76 John Rollins Rd., Suite B
South Portland, ME 04106
Tel: 207-260-2100 Fax: 207-260-2101

PROJECT NO. 13251
DESIGN CHKD WTC
DRAWN MAL WTC

DETAILS OF:
SEAPORT LOFTS
NEWBURY / HANCOCK STREET
PORTLAND, MAINE
FOR: 113 NEWBURY STREET, LLC
35 FAY STREET, SUITE 107B
BOSTON, MA 02118-4320

DATE: 07-26-13
SCALE: AS SHOWN

SHEET 10 OF 12