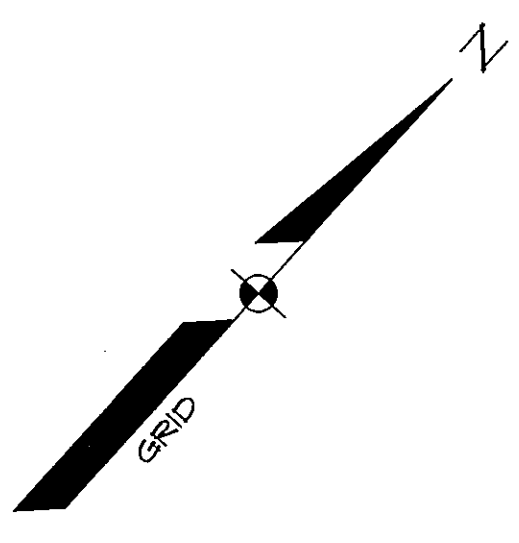
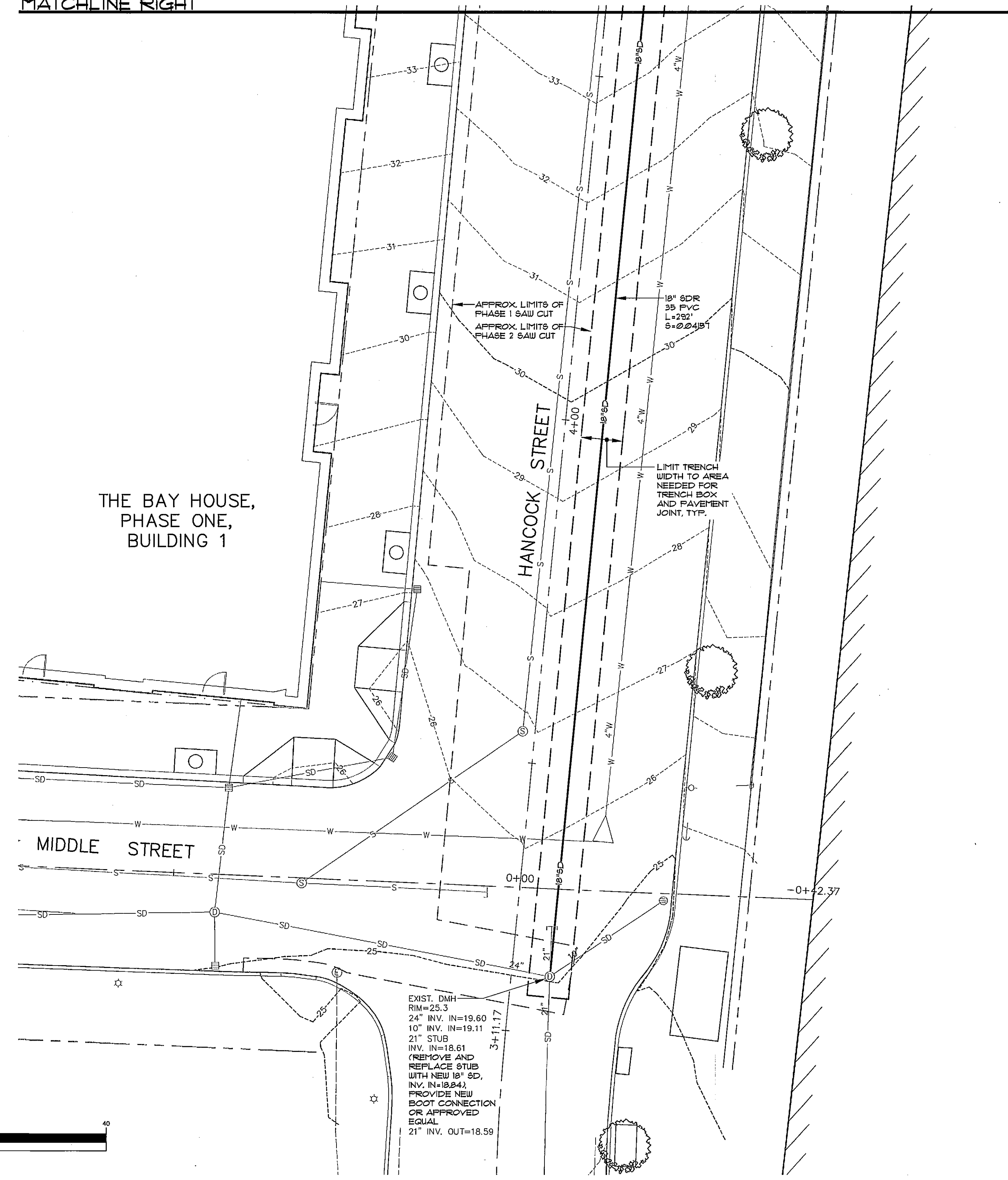


NOTES:
 1. STORM DRAIN SHALL BE SMOOTH BORE ADS N-12 DUAL-WALLED, HIGH DENSITY POLYETHYLENE PIPE OR EQUAL WITHIN SITE LIMITS.
 2. STORM DRAIN SHALL BE SDR-35 PVC PIPE WITHIN CITY RIGHT-OF-WAYS.

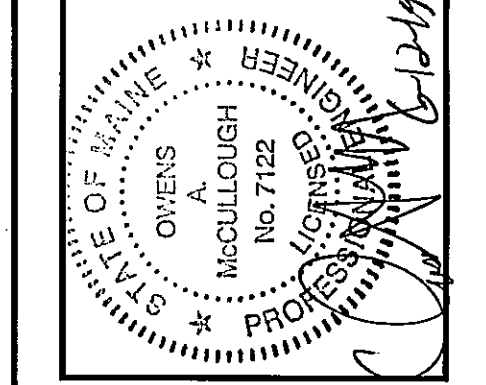
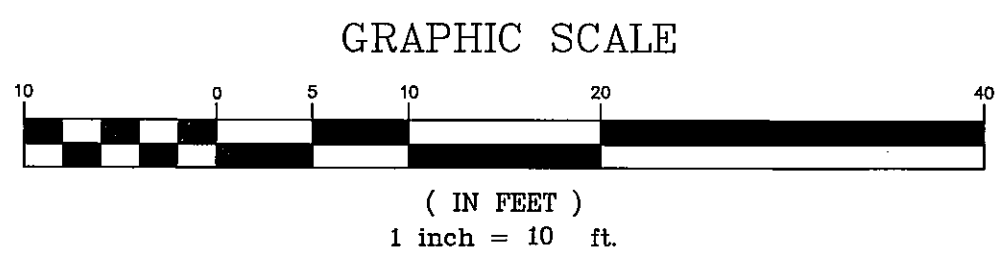
LEGEND		LEGEND	
EXISTING	DESCRIPTION	EXISTING	DESCRIPTION
---	BOUNDARY LINE/ROW	⊗	WATER GATE VALVE
---	ABUTTER LINE/ROW	⊕	WATER SHUT OFF
▨	SETBACK	⊙	HYDRANT
▩	BUILDING	⊖	SEWER
▭	SIGN	⊗	SEWER MH
▬	EDGE PAVEMENT	⊖	STORM DRAIN
▬	EDGE CONCRETE	⊖	ROOF DRAIN
▬	CURBLINE	⊖	CATCH BASIN
---	CONTOURS	⊖	DRAINAGE MH
---	SPOT GRADE	⊖	OVERHEAD UTILITY
---	SIDEWALK SLOPE	⊖	UNDERGROUND UTILITY
---	SCREEN FENCING	⊖	TRANSFORMER PAD
---	RETAINING WALL	⊖	ELECTRICAL MANHOLE
⊙	DECIDUOUS TREE	⊖	LIGHT POLE/WALL
⊙	CONIFEROUS TREE	⊖	UTILITY POLE
⊖	GAS	⊖	GUT
⊖	WATER		



MATCHLINE RIGHT



MATCHLINE LEFT



REV.	BY:	DATE:	STATUS:
G	WTC	08-12-14	FOUNDATION PERMIT SET
F	WTC	01-07-13	CITY SUBMITTAL 7
E	WTC	10-15-13	CITY SUBMITTAL 6
D	WTC	10-05-13	CITY SUBMITTAL 5
C	WTC	08-17-13	CITY SUBMITTAL 4
B	WTC	05-05-13	CITY SUBMITTAL 3
A	WTC	07-29-13	PHASE 1 PLAN APPLICATION TO CITY

SEBAGO TECHNICALS
 WWW.SEBOGOTECHNICALS.COM
 75 JAY ROAD, PORTLAND, ME 04106
 TEL: 207-202-2100

PROJECT NO.	13251
FIELD BOOK	
DESIGN	WTC
CHKD	WTC
DRAWN	WTC
MAL	

OFF-SITE DRAINAGE PLAN
 OF:
SEAPORT LOFTS
 NEWBURY / HANCOCK STREET
 PORTLAND, MAINE
 FOR:
113 NEWBURY STREET, LLC
 35 FAY STREET, SUITE 107B
 BOSTON, MA 02116-4520

DATE	SCALE
07-26-13	1" = 10'

SHEET 5 OF 12