

**MARK MUELLER ARCHITECTS**  
A.I.A.  
100 Commercial Street  
Suite 205  
Portland, Maine 04101  
Phone: 207.774.9057  
Email: rfi@muellerarchitects.com

© COPYRIGHT 2014  
MARK MUELLER ARCHITECTS

**SEAPORT LOFTS**  
113 NEWBURY STREET  
PORTLAND, MAINE 04101

Condominiums at:

**ELEVATIONS**

REVISIONS

DATE: 6.12.2014

PROJECT: SEAPORT LOFTS

DRAWN BY: MRP

CHECK BY: MUM

**A-2.2**

**EXTERIOR MATERIALS LEGEND**

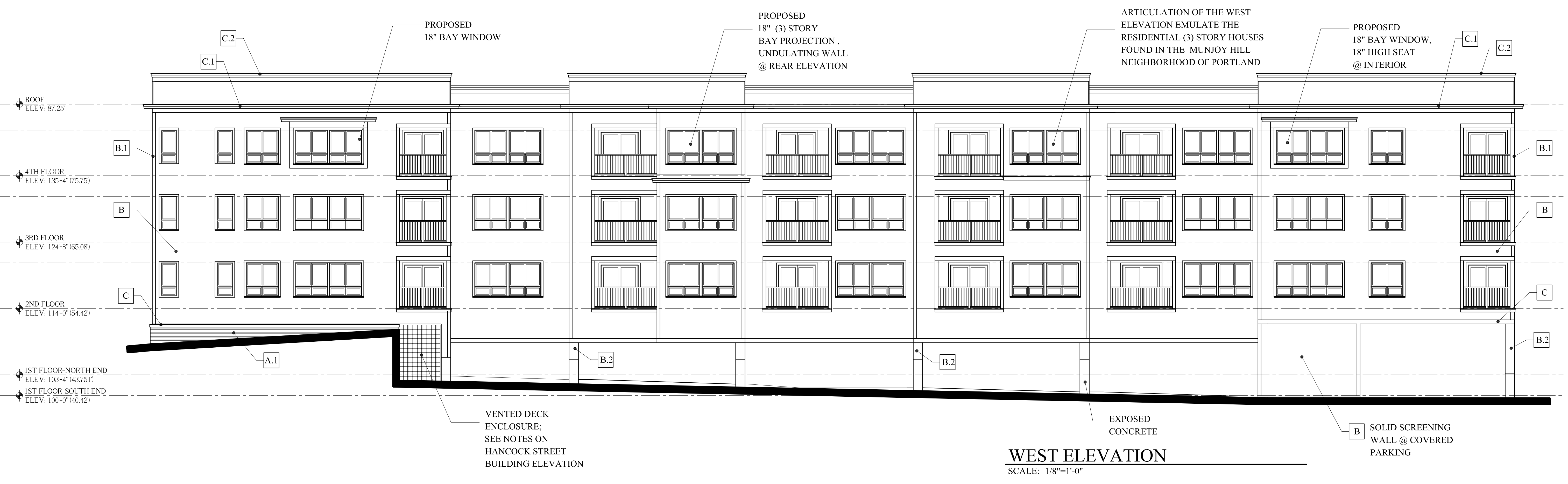
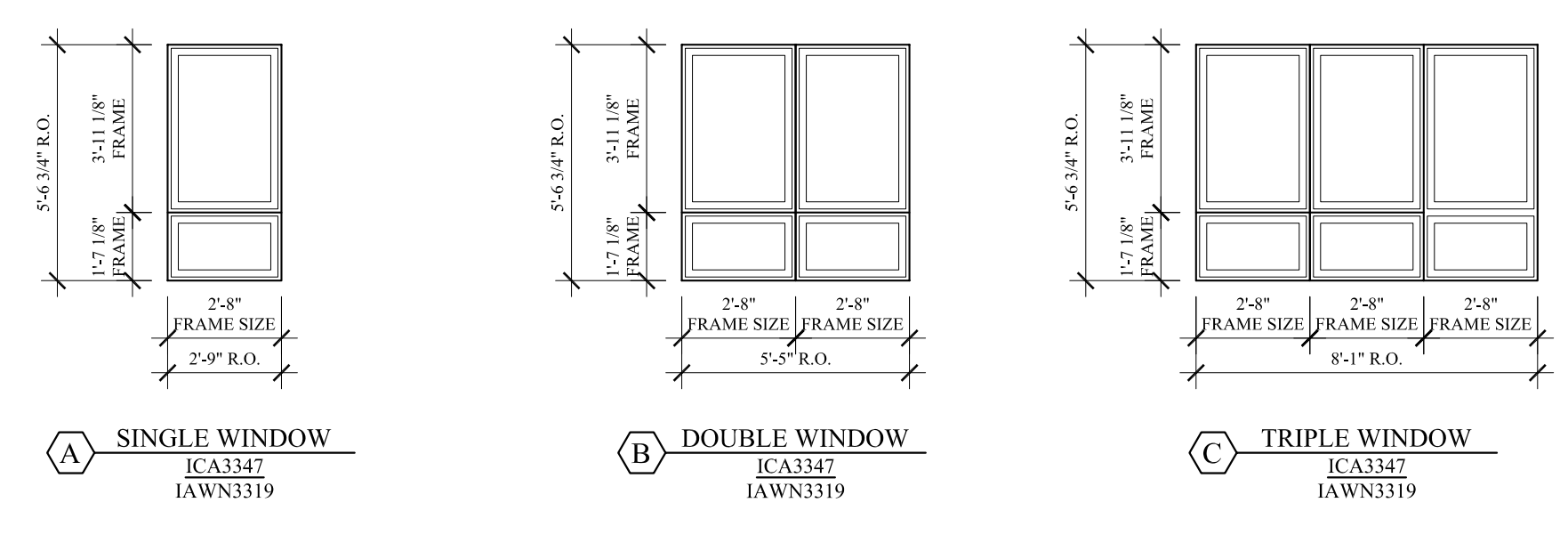
- A.1 BRICK VENEER
- A.2 BRICK SOLDIER COURSE OVER WINDOWS
- A.3 BRICK ROWLOCK SILLS
- B CEMENTITIOUS CLAPBOARD 5" TO THE WEATHER
- B.1 5/4" FIBER CEMENTITIOUS CORNER BOARDS, DOOR AND WINDOW TRIM, HORIZONTAL TRIM AND FRIEZE BOARDS
- B.2 5/4" FIBER CEMENTITIOUS PANEL/ FLUSH FINISH
- C RUNNING METAL PROFILE AND TERMINATION AT BRICK TRANSITION
- C.1 METAL FASCIA
- C.2 METAL COPING
- D ENTRANCE AWNINGS: WEATHERED COPPER SHEET WRAP W/ STAINLESS STEEL CABLE SUPPORTS

**EXTERIOR WINDOW SCHEDULE**

NO.	TYPE	MANUFACTURER	CATALOG NO.	REMARKS
A	CASEMENT AWNING	INTEGRITY	ICA3347 IAWN3319	OPERABLE WINDOWS, FACTORY 0" MULL AWNING TO HAVE WINDOW OPENING LIMITER
B	CASEMENT AWNING	INTEGRITY	ICA3347-2 IAWN3319-2	OPERABLE WINDOWS, FACTORY 0" MULL AWNINGS TO HAVE WINDOW OPENING LIMITER
C	CASEMENT AWNING	INTEGRITY	ICA3347-3 IAWN3319-3	OPERABLE WINDOWS, FACTORY 0" MULL AWNINGS TO HAVE WINDOW OPENING LIMITER

- NOTE:
- ALL WINDOWS BY INTEGRITY, SLIDING DOORS AT DECKS BY MARVIN
  - COLOR:  
INTERIOR: PRIMED  
EXTERIOR: EBONY
  - GRILLS:  
NONE
  - EXTENSION JAMBS:  
6 9/16" EXTENSION JAMBS
  - GLAZING  
DUAL-PANE HIGH PERFORMANCE LOW-E GLASS W/ ARGON (272)
  - CASINGS:  
INTERIOR: NO CASING - FIELD APPLIED BY G.C.  
EXTERIOR: NO CASING - FIELD APPLIED BY G.C.
  - SCREENS: (SHIP/ PACKAGE SEPARATE FROM WINDOWS)  
FGLASS MESH INSECT SCREENS OR EQUAL (MANUF. STANDARD OPTION)
  - HARDWARE:  
STANDARD HARDWARE  
STANDARD STYLE, WHITE FINISH
  - G.C. TO VERIFY WINDOW R.O. W/ WINDOW SUBMITTAL PRIOR TO CONSTRUCTION.
  - G.C. SHALL SUBMIT WINDOW SPECIFICATIONS FOR APPROVAL PRIOR TO ORDER.

WINDOWS TO BE INSTALLED BY THE GENERAL CONTRACTOR & INSPECTED BY THE SELECTED WINDOW MANUFACTURE WITH WRITTEN CERTIFICATION SUBMITTED TO THE G.C. & ARCHITECT UPON APPROVAL. ALL WRITTEN REMEDIATION SHALL BE COMPLETED BY THE GENERAL CONTRACTOR AND APPROVED BY THE WINDOW MANUFACTURER.



**WEST ELEVATION**  
SCALE: 1/8"=1'-0"