

**MARK MUELLER ARCHITECTS**  
A.I.A.  
100 Commercial Street  
Suite 205  
Portland, Maine 04101  
Phone: 207.774.9057  
Email: rfm@muellerarchitects.com

© 2014  
MARK MUELLER ARCHITECTS

**SEAPORT LOFTS**  
113 NEWBURY STREET  
PORTLAND, MAINE 04101

Condominiums at:

**FIRST FLOOR PLAN**

DATE: 6.12.2014

PROJECT: SEAPORT LOFTS

DRAWN BY: MFP

CHECK BY: MJM

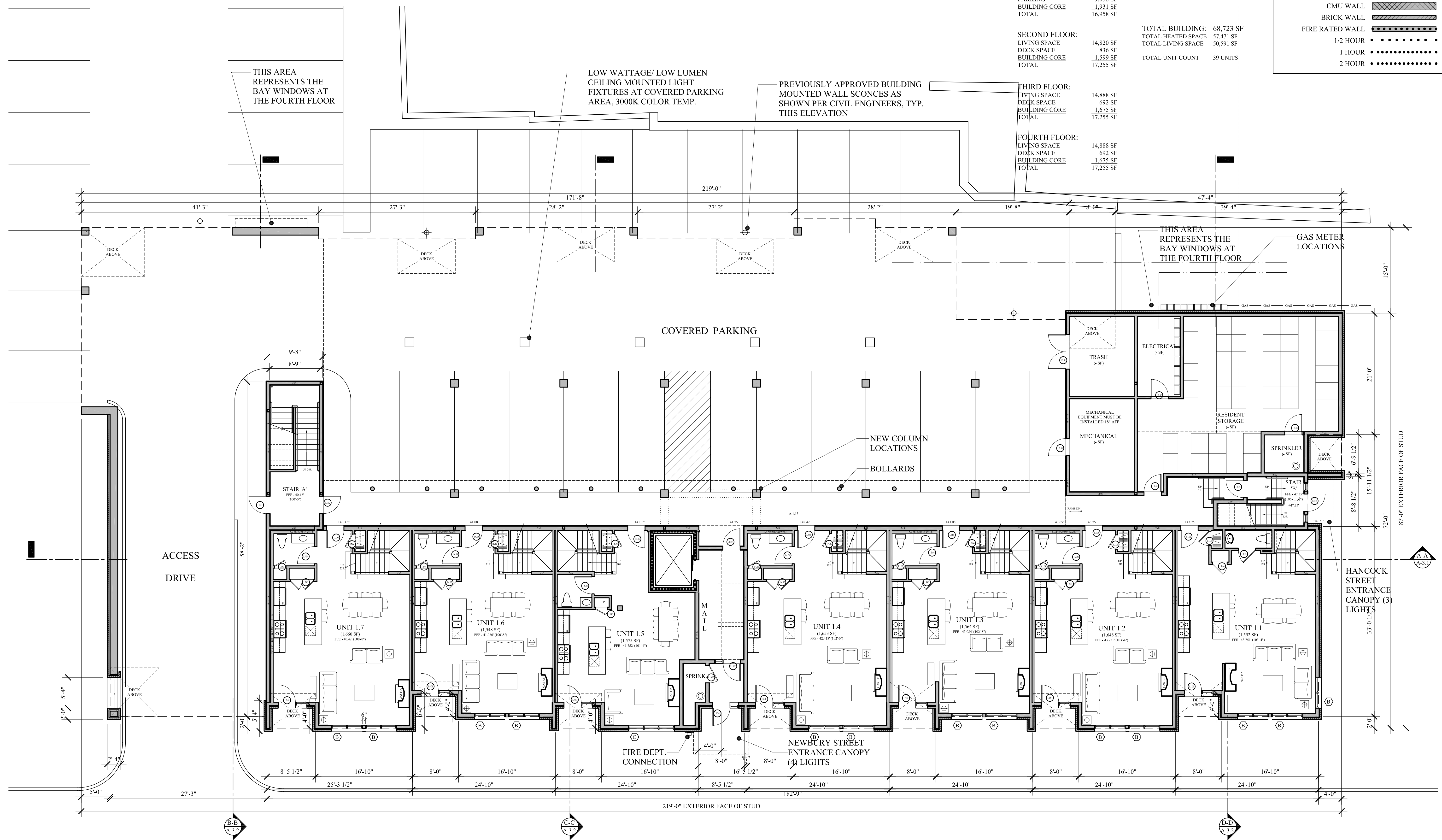
**A-1.1**

**WALL LEGEND**

STUD WALL	
CMU WALL	
BRICK WALL	
FIRE RATED WALL	
1/2 HOUR	
1 HOUR	
2 HOUR	

<b>FIRST FLOOR:</b>	
LIVING SPACE	5,995 SF
DECK SPACE	0 SF
PARKING	9,032 SF
BUILDING CORE	1,931 SF
TOTAL	16,958 SF
<b>SECOND FLOOR:</b>	
LIVING SPACE	14,820 SF
DECK SPACE	836 SF
BUILDING CORE	1,599 SF
TOTAL	17,255 SF
<b>THIRD FLOOR:</b>	
LIVING SPACE	14,888 SF
DECK SPACE	692 SF
BUILDING CORE	1,675 SF
TOTAL	17,255 SF
<b>FOURTH FLOOR:</b>	
LIVING SPACE	14,888 SF
DECK SPACE	692 SF
BUILDING CORE	1,675 SF
TOTAL	17,255 SF

TOTAL BUILDING: 68,723 SF  
TOTAL HEATED SPACE: 57,471 SF  
TOTAL LIVING SPACE: 50,591 SF  
TOTAL UNIT COUNT: 39 UNITS



**A-1.7**

**1ST FLOOR PLAN**  
SCALE: 1/8"=1'-0"

**A-1.6**

**FOUNDATION PERMIT SET: JUNE 12, 2014**

