

Sprinkler Head Schedule

Symbol	Count	Thread	K-Factor	Description	Note
⊕	4	1/2"	4.8	RELIABLE FIREH44 WHITE RECESSED PENDENT	on Dep
⊖	3	1/2"	4.4	RELIABLE FIREH44 WHITE RECESSED HORIZONTAL SIDEWALL SWH	Stowed
⊙	1	1/2"	4.4	RELIABLE FIREH44 DRY RECESSED HORIZONTAL SIDEWALL 4.4K 180° SWH(SPHS21)	

⊕ = Total Number of Heads This Floor

Sprinkler Head Schedule

Symbol	Count	Thread	K-Factor	Description	Note
⊕	8	1/2"	4.8	RELIABLE FIREH44 WHITE RECESSED PENDENT	on Dep
⊖	1	1/2"	4.4	RELIABLE FIREH44 DRY RECESSED HORIZONTAL SIDEWALL 4.4K 180° SWH(SPHS21)	

⊕ = Total Number of Heads This Floor

Sprinkler Head Schedule

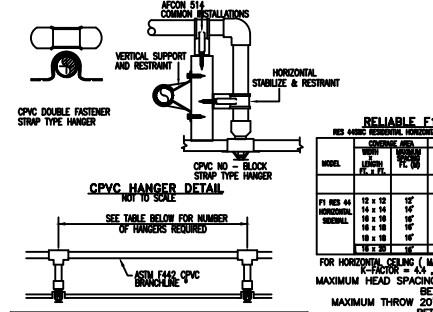
Symbol	Count	Thread	K-Factor	Description	Note
⊕	1	1/2"	4.8	RELIABLE FIREH44 WHITE RECESSED PENDENT	on Dep
⊙	1	1/2"	4.4	RELIABLE FIREH44 DRY RECESSED HORIZONTAL SIDEWALL 4.4K 180° SWH(SPHS21)	

⊕ = Total Number of Heads This Floor

Sprinkler Head Schedule

Symbol	Count	Thread	K-Factor	Description	Note
⊕	1	1/2"	4.4	RELIABLE FIREH44 WHITE RECESSED HORIZONTAL SIDEWALL SWH	Stowed

1 = Total Number of Heads This Floor



RELIABLE FIRE 44 HSW

MODEL	CEILING	WALL	WALL	WALL
FI RES 44	12 x 12	12"	12"	12"
	14 x 14	14"	14"	14"
	16 x 16	16"	16"	16"
	18 x 18	18"	18"	18"
	20 x 20	20"	20"	20"

RELIABLE FIRE 49 RECESSED PENDENT

MODEL	CEILING	WALL	WALL	WALL
FI RES 49	12 x 12	12"	12"	12"
	14 x 14	14"	14"	14"
	16 x 16	16"	16"	16"
	18 x 18	18"	18"	18"
	20 x 20	20"	20"	20"

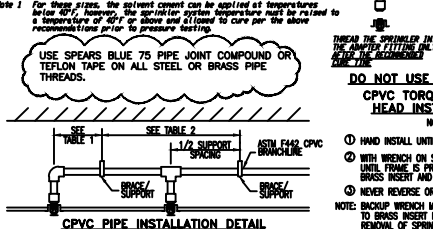
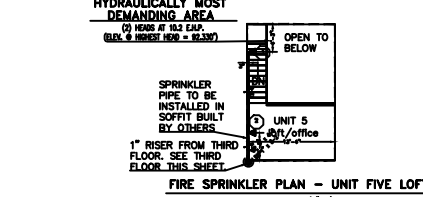
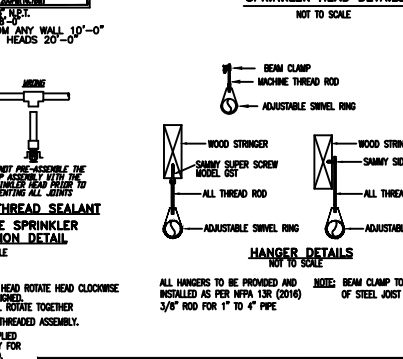
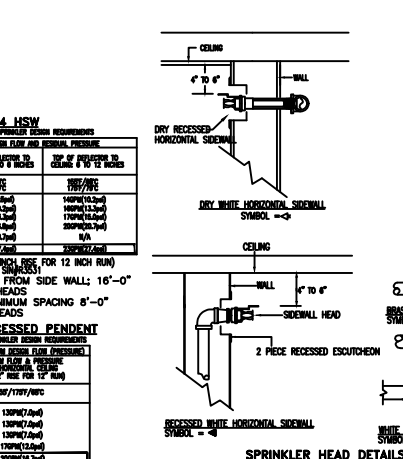


TABLE 1
 MINIMUM SUPPORT SPACING DISTANCE
 DID LINE SPRINKLER HEAD DROP BELOW

PIPE SIZE	SYSTEM PRESSURE	SPACING
3/4"	< 100 psi	6'
1"	> 100 psi	8'
1 1/4"	< 100 psi	12'
1 1/2" - 3"	< 100 psi	12'

TABLE 2
 MINIMUM SUPPORT SPACING DISTANCE
 W/ SPRINKLER HEAD DROP BELOW

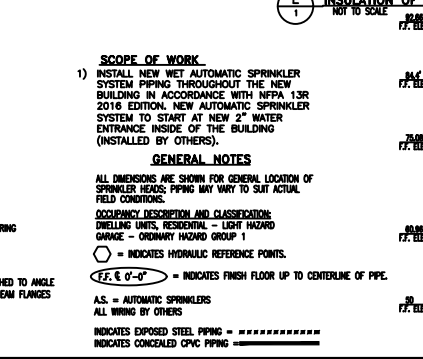
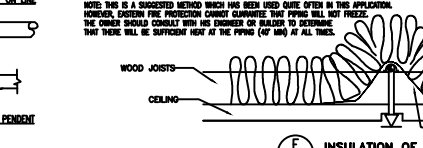
PIPE SIZE	SYSTEM PRESSURE	SPACING
3/4"	< 100 psi	6'
1"	> 100 psi	8'
1 1/4"	< 100 psi	12'
1 1/2" - 3"	< 100 psi	12'



Sprinkler Head Schedule

Symbol	Count	Thread	K-Factor	Description	Note
⊕	2	1/2"	4.4	RELIABLE FIREH44 WHITE RECESSED HORIZONTAL SIDEWALL SWH	Stowed

⊕ = Total Number of Heads This Floor



HYDRAULIC SYSTEM
 THIS BUILDING IS PROTECTED BY A MANUALLY DESIGNED AUTOMATIC SPRINKLER SYSTEM.

LOCATION: UNIT # 5

NEPA # 13R

DESIGN OF DESIGN:

1. WET PIPE	14
2. WET PIPE	3

SYSTEM HEADINGS:

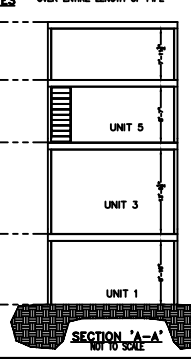
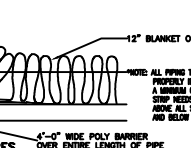
1. WET PIPE (W)	8617
2. WET PIPE (W)	8617
3. WET PIPE (W)	8617

⊕ = HYDRAULIC REFERENCE POINT

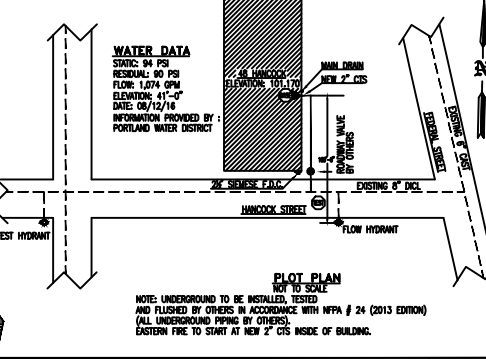
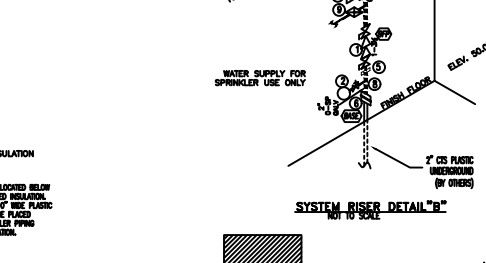
Hydraulic Data Nameplate

Symbol	Count	Thread	K-Factor	Description	Note
⊕	2	1/2"	4.4	RELIABLE FIREH44 WHITE RECESSED HORIZONTAL SIDEWALL SWH	Stowed

⊕ = Total Number of Heads This Floor



- LEGEND FOR NFPA 13R SPRINKLER SYSTEM**
- 1 1/4" AMES MOD. 2000B BACKFLOW PREVENTER W/ 1/4" BALL VALVES W/DRAIN & LOCK
 - 1/2" WATER PRESSURE GAUGE W/ 1/4" THREE-WAY VALVE
 - 1/4" POTTER MOD. VSR-5 FLOW SWITCH WIRED TO ELECTRONIC BELL
 - 1/4" TEST-AND-DRAIN WITH 7/16" ORIFICE (TO OUTSIDE DISCHARGE) (SEE FIRST FLOOR PLAN)
 - 1/4" UNION
 - 2" PLASTIC TO STEEL ADAPTER
 - 3-HEAD SPARE HEAD BOX W/ HEAD WRENCH
 - 2 1/2" x 1/4" GALVANIZED TEE
 - 5/8" SNING CHECK VALVE



GENERAL NFPA #13R NOTES

DATE	REVISIONS	REQUIRED APPROVALS	FIRE SPRINKLER PLANS & DETAILS

SPRINKLER SYSTEM INSTALLATION TO COMPLY WITH NFPA PAMP#17 # 13R-2016

SPRINKLERS ARE NOT REQUIRED IN THE FOLLOWING AREAS AS PER NFPA 13R-2016

- A. BATHROOMS NOT EXCEEDING 55 SQ. FT. WITH NON-COMBUSTIBLE CONSTRUCTION & FIXTURES
- B. CLOTHES CLOSETS, LINEN CLOSETS, AND PANTRIES WITH THE DWELLING UNITS WHERE THE AREA OF THE SPACE DOES NOT EXCEED 24 SQ. FT. WITH THE WALLS AND CEILINGS SURFACED W/ NON-COMBUSTIBLE OR LIMITED-COMBUSTIBLE MATERIALS AS DEFINED BY NFPA 220.
- C. ANY PORCHES, BALCONIES, CORRIDORS, AND STAIRS THAT ARE OPEN AND ATTACHED.
- D. ATTICS, PERGOLAS, EQUIPMENT ROOMS, CRAWL SPACES, FLOOR/CEILING SPACES, ELEVATOR SHAFTS, AND ANY OTHER CONCEALED SPACES THAT ARE NOT USED OR INTENDED FOR FURNING PURPOSES OR STORAGE.
- E. CLOSETS ON EXTERIOR BALCONIES REGARDLESS OF SIZE AS LONG AS THERE ARE NO DOORS OR UNPROTECTED PENETRATIONS FROM THE CLOSET DIRECTLY INTO THE DWELLING.

1" LINE PIPING IN FIRST FLOOR GARAGE TO BE BLACK SCHWABE #40, JOINED W/ THREADED DUCTILE IRON FITTINGS. (C = 120)

UPPER LEVEL PIPING TO BE CPVC

OWNER TO PROVIDE SUFFICIENT HEAT THROUGHOUT BUILDING TO PREVENT FREEZING OF WATER FILLED SPRINKLER PIPING AND EQUIPMENT (40F MIN).

ALL WIRING TO BE DONE BY OTHERS

DATE: _____

REVISIONS:

REQUIRED APPROVALS:

OWNER/ARCHITECT: _____
 SUE FIRE MARSHAL
 PORTLAND FIRE DEPARTMENT

88 HANCOCK
 48 HANCOCK, PORTLAND MAINE

CONTRACT WITH: OWNER

EASTERN FIRE PROTECTION
 AUBURN/LEWISTON INDUSTRIAL
 AIRPARK, AUBURN, MAINE 04810

DWG. NO. 1 OF 1

JOB NUMBER AU-045-16

SCALE AS NOTED

DATE 12/06/2016