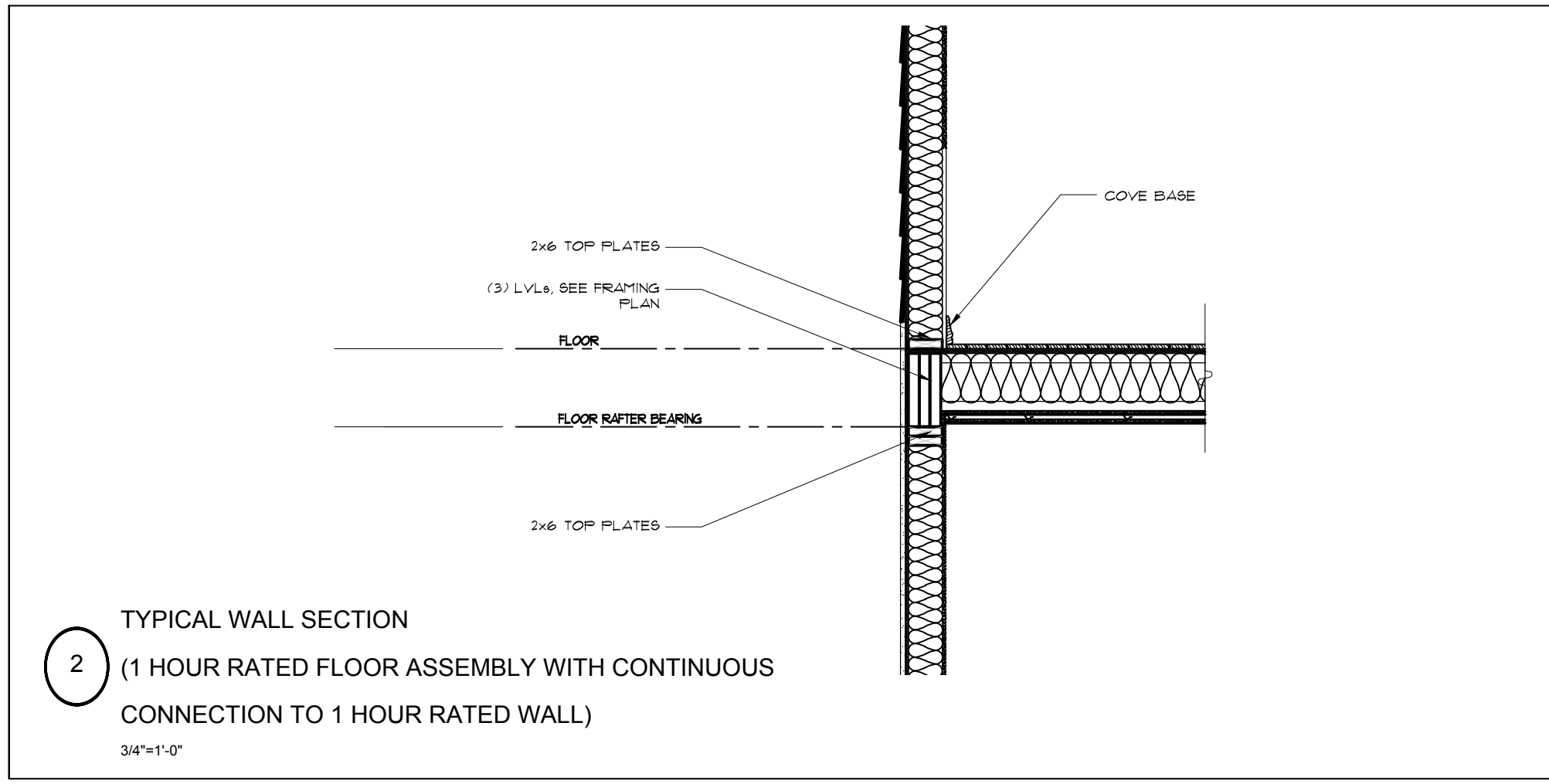
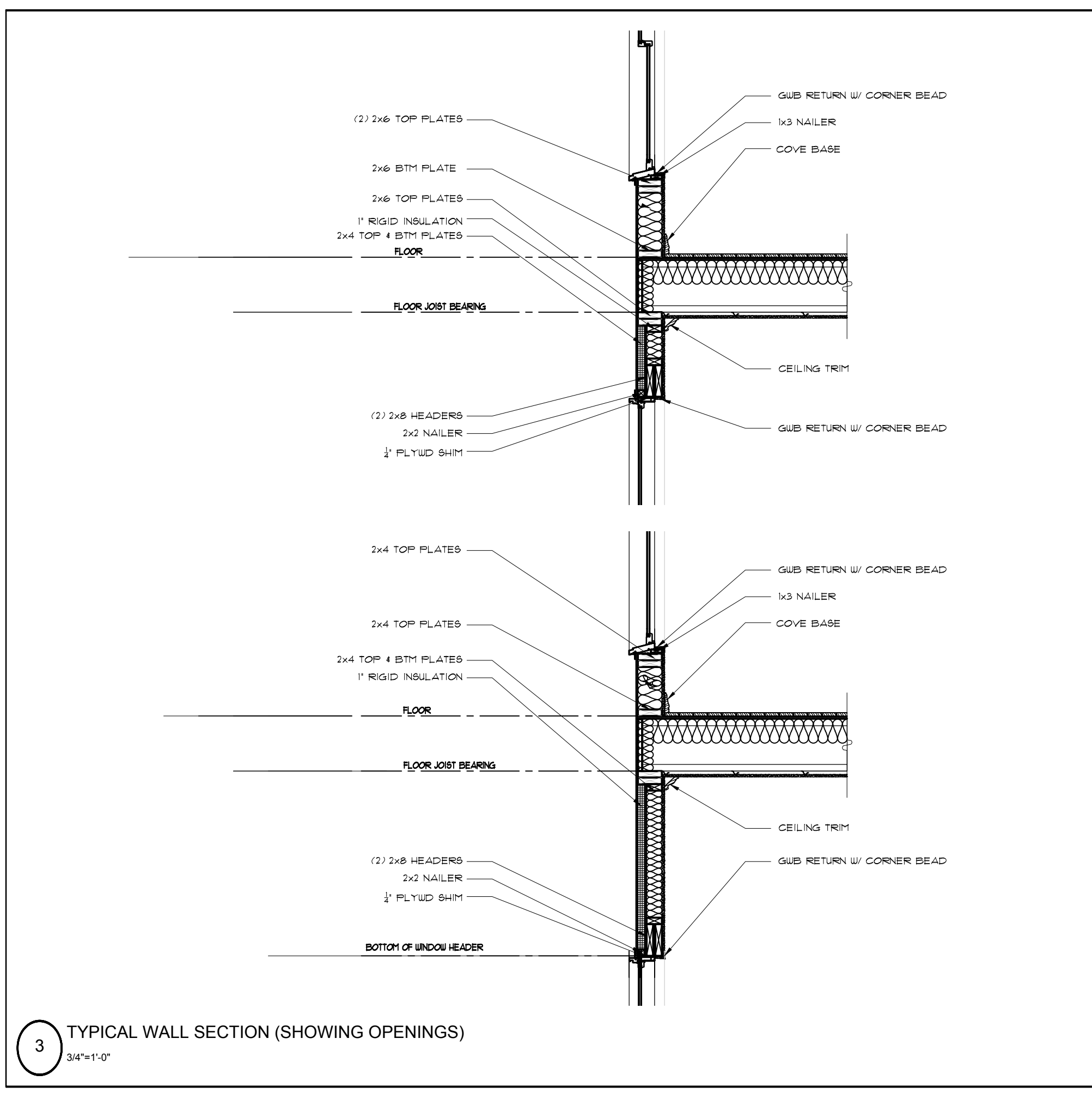


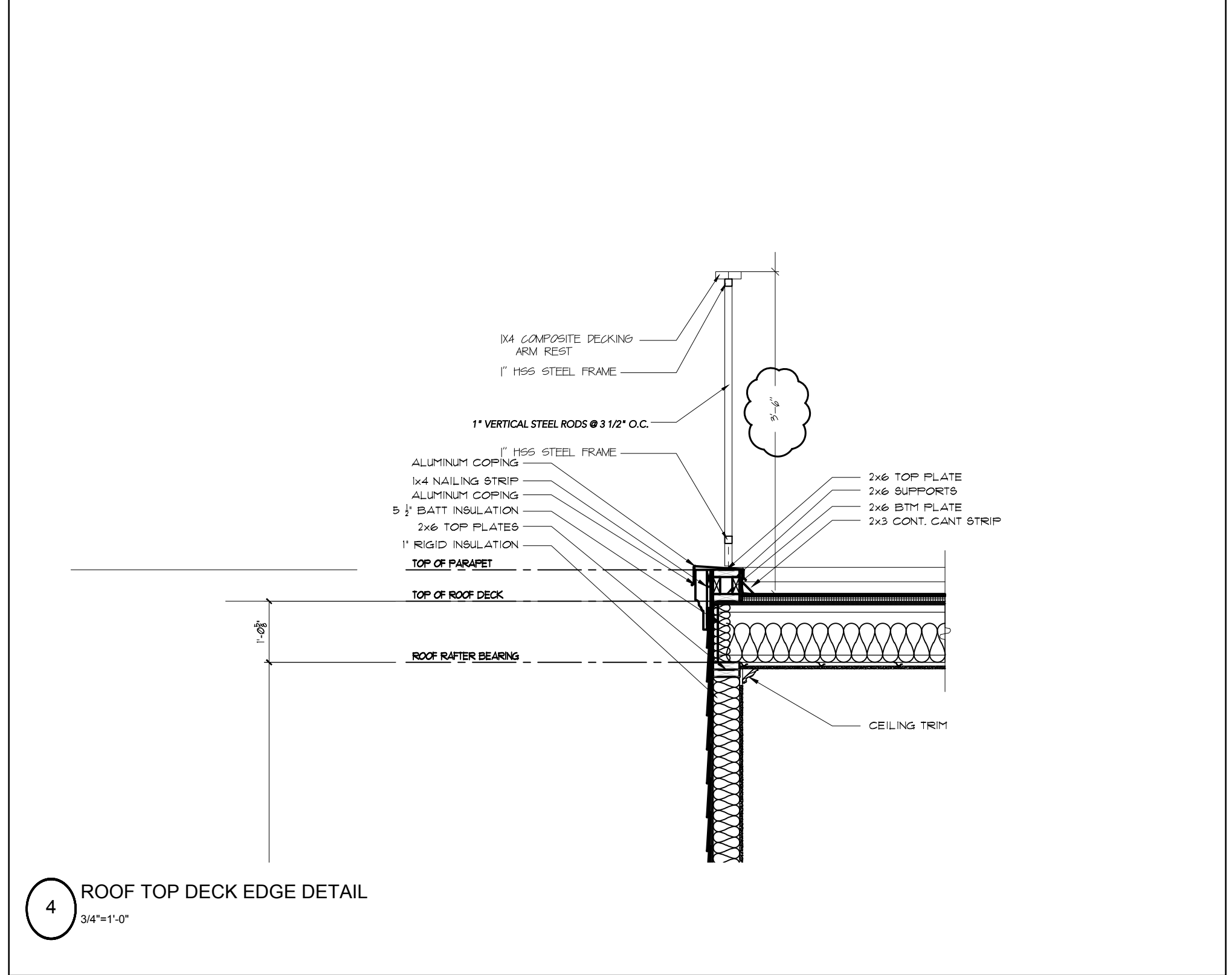
1 TYPICAL PARAPET DETAIL  
3/4"x1'-0"



2 TYPICAL WALL SECTION  
(1 HOUR RATED FLOOR ASSEMBLY WITH CONTINUOUS CONNECTION TO 1 HOUR RATED WALL)  
3/4"x1'-0"



3 TYPICAL WALL SECTION (SHOWING OPENINGS)  
3/4"x1'-0"



4 ROOF TOP DECK EDGE DETAIL  
3/4"x1'-0"

Fire Rated System Design - UL U305

4 3/4"

**UL U305**  
Interior Partitions - Wood Stud

Fire Rating	STC / Sound Test	System Thickness
1 hour	N/A	4-3/4"

Detail Description

- Gypsum Board - 5/8 in. board, with beveled, square or tapered edges, applied vertically or horizontally. - SHEETROCK Brand FIRECODE Core (Type X)
- Wood Studs - 2x4 wood studs spaced max 16 in. OC
- Gypsum Board - 5/8 in. board, with beveled, square or tapered edges, applied vertically or horizontally. - SHEETROCK Brand FIRECODE Core (Type X)

5 WALL TYPE IC  
(separation between corridor and garage)  
(separation between corridor and unit 1)

Fire Rated System Design - UL U305

6"

**UL U305**  
Interior Partitions - Wood Stud/ SHEAR WALL

Fire Rating	STC / Sound Test	System Thickness
1 hour	N/A	6-1/4"

Detail Description

- Gypsum Board - 5/8 in. board, with beveled, square or tapered edges, applied vertically or horizontally. - SHEETROCK Brand FIRECODE Core (Type X)
- 3/4" PLYWOOD
- Wood Studs - 2x4 wood studs spaced max 16 in. OC
- 3/4" PLYWOOD
- Gypsum Board - 5/8 in. board, with beveled, square or tapered edges, applied vertically or horizontally. - SHEETROCK Brand FIRECODE Core (Type X)

6 WALL TYPE IB  
(separation between corridor and unit 1)