

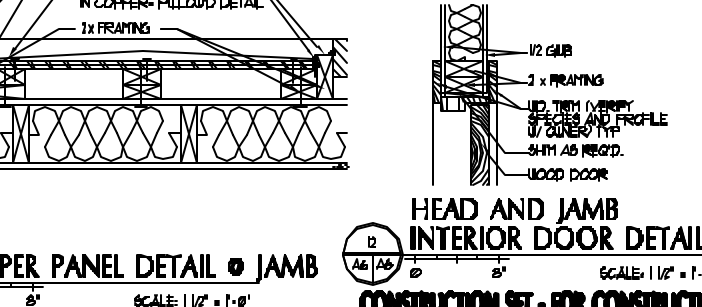
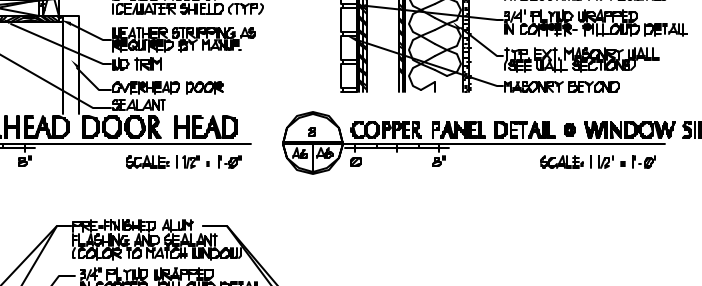
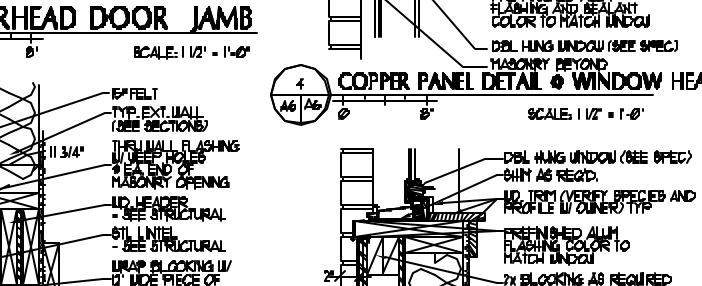
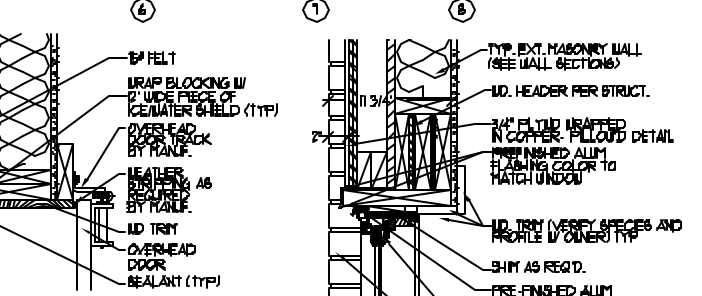
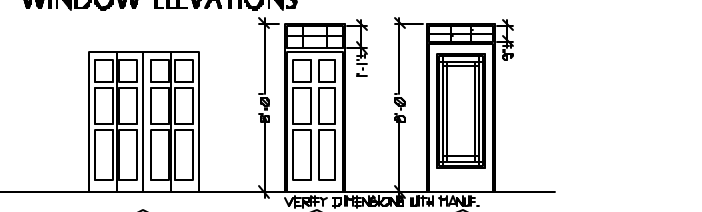
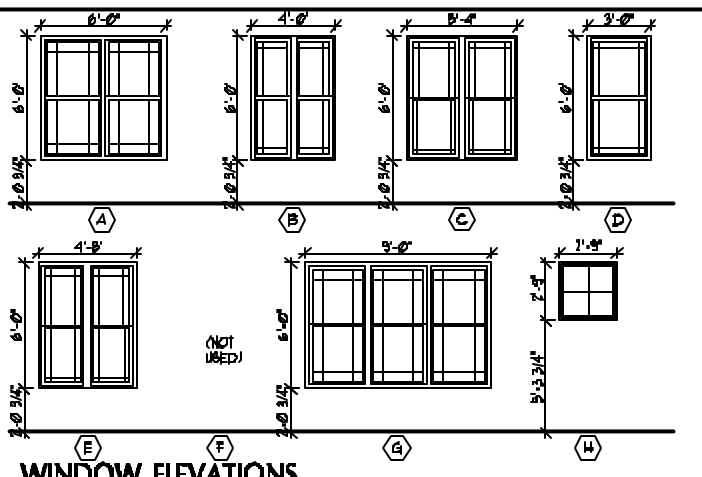
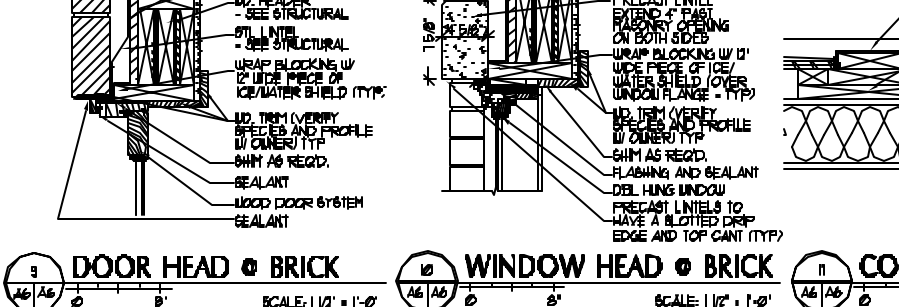
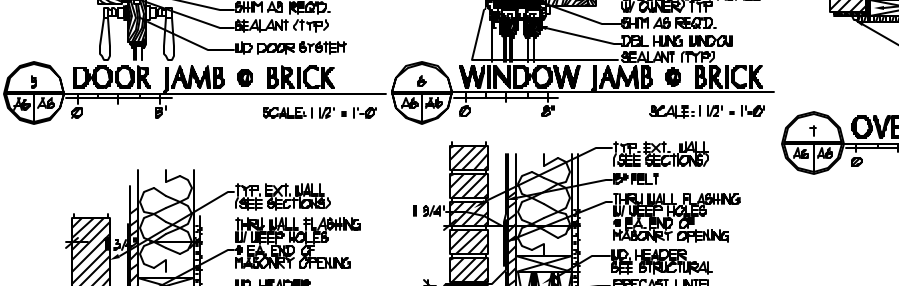
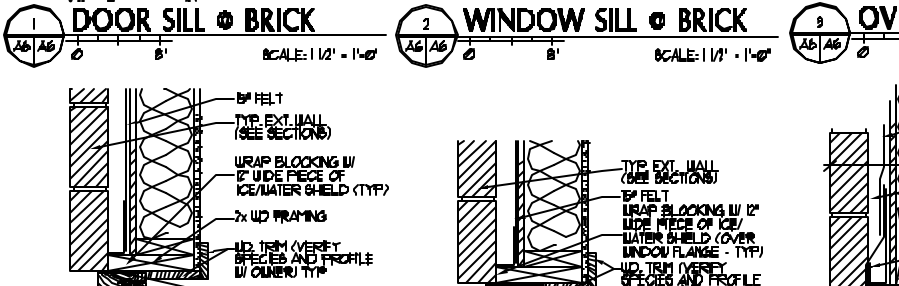
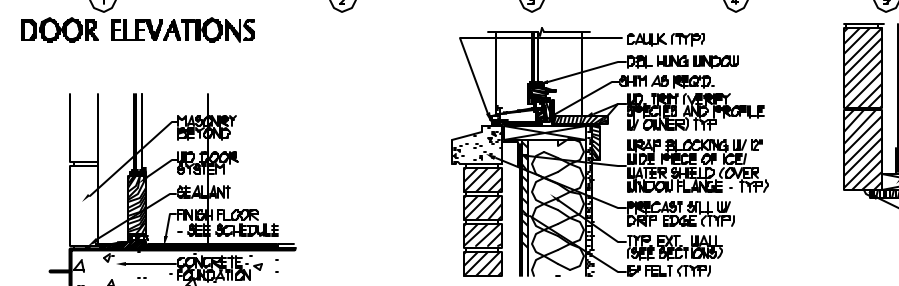
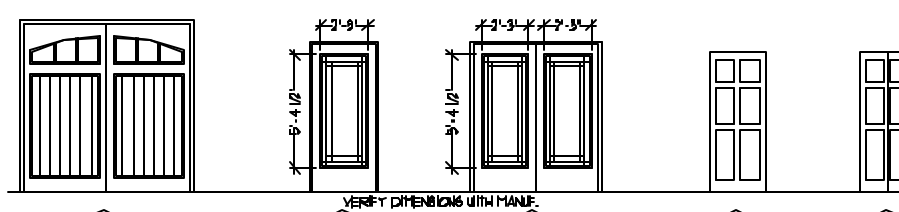
IF THIS SHEET IS NOT 24 X 36 IT IS A REDUCED SCALE PRINT - SCALE ACCORDINGLY

DOOR SCHEDULE											
UNIT	NUM	DESCRIPTION	SIZE	MAT	TYPE	RATING	MAT	HEAD	JAMB	SILL	NOTES
UNIT A	100A	EXTERIOR TO GARAGE	8'-0" x 8'-0"	UD	1	..	UD	1/4A	3/4A	..	OVER-HEAD DOOR - SEE SPEC.
	100B	GARAGE TO ENTRY	3'-0" x 6'-0"	UD	4	20 MN	UD	1/4A	1/4A	..	20 MN FIRE RATED OR SOLID CORE
	101A	PORCH TO ENTRY	3'-0" x 1'-0"	UD	?	..	UD	5/4A	5/4A	1/4A	W/ NEUL GLAZING
	102A	ENTRY TO CL	4'-0" x 6'-0"	UD	?	..	UD	1/4A	1/4A	..	DBL BI-FOLD
	103A	ENTRY TO MECH	3'-0" x 6'-0"	UD	?	..	UD	1/4A	1/4A	..	DBL BI-FOLD
	104A	MACH TO ENTRY	2'-0" x 6'-0"	UD	4	..	UD	1/4A	1/4A	..	..
	105A	ELEV. TO ENTRY	3'-0" x 6'-0"	UD	4	..	UD	1/4A	1/4A	..	..
	106A	ALL-PURPOSE TO BATH	2'-0" x 6'-0"	UD	4	..	UD	1/4A	1/4A	..	..
	107A	ENTRY TO ALL-PURPOSE	2'-0" x 6'-0"	UD	4	..	UD	1/4A	1/4A	..	..
	108A	ALL-PURPOSE TO CL	3'-0" x 6'-0"	UD	6	..	UD	1/4A	1/4A	..	DBL BI-FOLD
	109A	ALL-PURPOSE TO CL	3'-0" x 6'-0"	UD	6	..	UD	1/4A	1/4A	..	DBL BI-FOLD
	110A	ALL-PURPOSE TO PATIO	3'-0" x 1'-0"	UD	?	..	UD	10/4A	5/4A	1/4A	W/ NEUL GLAZING (NO PRECAST UNITS)
111A	GARAGE TO MECH	5'-0" x 6'-0"	UD	6	..	UD	1/4A	1/4A	..	DBL BI-FOLD	
112A	KITCHEN TO DECK	3'-0" x 1'-0"	UD	?	..	UD	10/4A	5/4A	1/4A	W/ NEUL GLAZING (NO PRECAST UNITS)	
113A	ELEV. TO LIVING	2'-0" x 1'-0"	UD	4	..	UD	1/4A	1/4A	..	..	
114A	KIT. TO PANTRY	2'-0" x 1'-0"	UD	?	..	UD	1/4A	1/4A	..	DBL BI-FOLD	
115A	HALL TO BEDROOM	2'-0" x 6'-0"	UD	1	..	UD	1/4A	1/4A	..	..	
116A	BEDROOM TO CL	3'-0" x 6'-0"	UD	6	..	UD	1/4A	1/4A	..	DBL BI-FOLD	
117A	BEDROOM TO CL	3'-0" x 6'-0"	UD	6	..	UD	1/4A	1/4A	..	DBL BI-FOLD	
118A	BEDROOM TO CL	3'-0" x 6'-0"	UD	6	..	UD	1/4A	1/4A	..	DBL BI-FOLD	
119A	HALL TO LAUNDRY	2'-0" x 6'-0"	UD	4	..	UD	1/4A	1/4A	..	..	
120A	HALL TO BATH	2'-0" x 6'-0"	UD	4	..	UD	1/4A	1/4A	..	..	
121A	ELEV. TO HALL	3'-0" x 6'-0"	UD	4	..	UD	1/4A	1/4A	..	..	
122A	HALL TO HST. BEDROOM	2'-0" x 6'-0"	UD	7	..	UD	1/4A	1/4A	..	..	
123A	HST. BEDROOM TO DECK	3'-0" x 1'-0"	UD	?	..	UD	10/4A	5/4A	1/4A	W/ NEUL GLAZING (NO PRECAST UNITS)	
124A	HST. BEDROOM TO HST. CL	2'-0" x 6'-0"	UD	7	..	UD	1/4A	1/4A	..	..	
125A	PENTHOUSE TO ROOF DECK	2'-0" x 1'-0"	UD	?	..	UD	5/4A	1/4A	1/4A	DBL PATIO DOOR W/ NEUL GLAZING	
126A	PENTHOUSE TO ROOF DECK	2'-0" x 1'-0"	UD	?	..	UD	5/4A	1/4A	1/4A	DBL PATIO DOOR W/ NEUL GLAZING	
127A	ELEV. TO PENTHOUSE	3'-0" x 6'-0"	UD	4	..	UD	1/4A	1/4A	..	..	
128A	PENTHOUSE TO MECH	3'-0" x 6'-0"	UD	6	..	UD	1/4A	1/4A	..	DBL BI-FOLD	
129A	PORCH TO HALL	3'-0" x 1'-0"	UD	1	..	UD	5/4A	5/4A	1/4A	W/ NEUL GLAZING	
130A	GARAGE TO HALL	3'-0" x 6'-0"	UD	4	20 MN	UD	1/4A	1/4A	..	20 MN FIRE RATED OR SOLID CORE	
131A	EXTERIOR TO GARAGE	8'-0" x 8'-0"	UD	1	..	UD	1/4A	1/4A	..	OVER-HEAD DOOR - SEE SPEC.	
132A	CL. TO HALL	2'-0" x 6'-0"	UD	4	..	UD	1/4A	1/4A	..	..	
133A	MECH. TO HALL	4'-0" x 6'-0"	UD	6	..	UD	1/4A	1/4A	..	DBL BI-FOLD	
134A	HALL TO BATH	2'-0" x 6'-0"	UD	4	..	UD	1/4A	1/4A	..	..	
135A	HALL TO PATIO	2'-0" x 6'-0"	UD	4	..	UD	1/4A	1/4A	..	..	
136A	MECH. TO ALL-PURPOSE	2'-0" x 6'-0"	UD	4	..	UD	1/4A	1/4A	..	..	
137A	CL. TO ALL-PURPOSE	1'-0" x 6'-0"	UD	6	..	UD	1/4A	1/4A	..	DBL	
138A	HALL TO ALL-PURPOSE	2'-0" x 6'-0"	UD	4	..	UD	1/4A	1/4A	..	..	
139A	ALL-PURPOSE TO PATIO	3'-0" x 1'-0"	UD	?	..	UD	10/4A	5/4A	1/4A	W/ NEUL GLAZING (NO PRECAST UNITS)	
140A	ELEV. TO LIVING	3'-0" x 6'-0"	UD	4	..	UD	1/4A	1/4A	..	..	
141A	LIVING TO DECK	3'-0" x 1'-0"	UD	?	..	UD	10/4A	5/4A	1/4A	W/ NEUL GLAZING (NO PRECAST UNITS)	
142A	HALL TO BEDROOM	2'-0" x 6'-0"	UD	7	..	UD	1/4A	1/4A	..	..	
143A	BEDROOM TO CL	3'-0" x 6'-0"	UD	6	..	UD	1/4A	1/4A	..	DBL BI-FOLD	
144A	HALL TO LAUNDRY	2'-0" x 6'-0"	UD	6	..	UD	1/4A	1/4A	..	DBL BI-FOLD	
145A	BEDROOM TO BATH	2'-0" x 6'-0"	UD	7	..	UD	1/4A	1/4A	..	..	
146A	HST. BEDROOM TO HST. BATH	2'-0" x 6'-0"	UD	7	..	UD	1/4A	1/4A	..	..	
147A	HST. BATH TO TOILET	2'-0" x 6'-0"	UD	4	..	UD	1/4A	1/4A	..	POCKET DOOR - 3/8"	
148A	ELEV. TO HALL	3'-0" x 6'-0"	UD	4	..	UD	1/4A	1/4A	..	..	
149A	HALL TO HST. BEDROOM	2'-0" x 6'-0"	UD	7	..	UD	1/4A	1/4A	..	..	
150A	HST. BEDROOM TO DECK	3'-0" x 1'-0"	UD	?	..	UD	10/4A	5/4A	1/4A	W/ NEUL GLAZING (NO PRECAST UNITS)	
151A	HST. BEDROOM TO CL	3'-0" x 6'-0"	UD	6	..	UD	1/4A	1/4A	..	DBL BI-FOLD	
152A	HST. BEDROOM TO CL	3'-0" x 6'-0"	UD	6	..	UD	1/4A	1/4A	..	DBL BI-FOLD	
153A	HST. BEDROOM TO CL	3'-0" x 6'-0"	UD	6	..	UD	1/4A	1/4A	..	DBL BI-FOLD	
154A	DECK TO PENTHOUSE	3'-0" x 1'-0"	UD	?	..	UD	5/4A	1/4A	1/4A	W/ NEUL GLAZING	
155A	DECK TO PENTHOUSE	3'-0" x 1'-0"	UD	?	..	UD	5/4A	1/4A	1/4A	W/ NEUL GLAZING	
156A	PENTHOUSE TO MECH	3'-0" x 6'-0"	UD	6	..	UD	1/4A	1/4A	..	DBL BI-FOLD	
157A	ELEV. TO PENTHOUSE	3'-0" x 6'-0"	UD	4	..	UD	1/4A	1/4A	..	..	
158A	PORCH TO HALL	3'-0" x 1'-0"	UD	1	..	UD	5/4A	5/4A	1/4A	W/ NEUL GLAZING	
159A	EXTERIOR TO GARAGE	8'-0" x 8'-0"	UD	1	..	UD	1/4A	1/4A	..	OVER-HEAD DOOR - SEE SPEC.	
160A	GARAGE TO HALL	3'-0" x 6'-0"	UD	4	20 MN	UD	1/4A	1/4A	..	20 MN FIRE RATED OR SOLID CORE	
161A	CL. TO HALL	2'-0" x 6'-0"	UD	5	..	UD	1/4A	1/4A	..	DBL BI-FOLD	
162A	HALL TO CL	2'-0" x 6'-0"	UD	5	..	UD	1/4A	1/4A	..	DBL BI-FOLD	
163A	ELEV. TO HALL	3'-0" x 6'-0"	UD	4	..	UD	1/4A	1/4A	..	..	
164A	GARAGE TO MECH	5'-0" x 6'-0"	UD	6	..	UD	1/4A	1/4A	..	DBL BI-FOLD	
165A	HALL TO BATH	2'-0" x 6'-0"	UD	4	..	UD	1/4A	1/4A	..	..	
166A	MACH. TO HALL	2'-0" x 6'-0"	UD	4	..	UD	1/4A	1/4A	..	..	
167A	ALL-PURPOSE TO HALL	2'-0" x 6'-0"	UD	4	..	UD	1/4A	1/4A	..	..	
168A	ALL-PURPOSE TO CL	3'-0" x 6'-0"	UD	6	..	UD	1/4A	1/4A	..	DBL BI-FOLD	
169A	ALL-PURPOSE TO CL	3'-0" x 6'-0"	UD	6	..	UD	1/4A	1/4A	..	DBL BI-FOLD	
170A	ALL-PURPOSE TO PATIO	3'-0" x 1'-0"	UD	?	..	UD	10/4A	5/4A	1/4A	W/ NEUL GLAZING (NO PRECAST UNITS)	
171A	ELEV. TO LIVING	3'-0" x 6'-0"	UD	4	..	UD	1/4A	1/4A	..	..	
172A	LIVING TO DECK	3'-0" x 1'-0"	UD	?	..	UD	10/4A	5/4A	1/4A	W/ NEUL GLAZING (NO PRECAST UNITS)	
173A	HALL TO BEDROOM	2'-0" x 6'-0"	UD	7	..	UD	1/4A	1/4A	..	..	
174A	BEDROOM TO BATH	2'-0" x 6'-0"	UD	7	..	UD	1/4A	1/4A	..	..	
175A	BEDROOM TO CL	3'-0" x 6'-0"	UD	6	..	UD	1/4A	1/4A	..	DBL BI-FOLD	
176A	HALL TO LAUNDRY	2'-0" x 6'-0"	UD	6	..	UD	1/4A	1/4A	..	DBL BI-FOLD	
177A	HST. BEDROOM TO HST. BATH	2'-0" x 6'-0"	UD	7	..	UD	1/4A	1/4A	..	..	
178A	ELEV. TO HALL	3'-0" x 6'-0"	UD	4	..	UD	1/4A	1/4A	..	..	
179A	HALL TO HST. BEDROOM	2'-0" x 6'-0"	UD	7	..	UD	1/4A	1/4A	..	..	
180A	HST. BEDROOM TO DECK	3'-0" x 1'-0"	UD	?	..	UD	10/4A	5/4A	1/4A	W/ NEUL GLAZING (NO PRECAST UNITS)	
181A	HST. BEDROOM TO CL	3'-0" x 6'-0"	UD	6	..	UD	1/4A	1/4A	..	DBL BI-FOLD	
182A	HST. BEDROOM TO CL	3'-0" x 6'-0"	UD	6	..	UD	1/4A	1/4A	..	DBL BI-FOLD	
183A	HST. BEDROOM TO CL	3'-0" x 6'-0"	UD	6	..	UD	1/4A	1/4A	..	DBL BI-FOLD	
184A	DECK TO PENTHOUSE	3'-0" x 1'-0"	UD	?	..	UD	5/4A	1/4A	1/4A	W/ NEUL GLAZING	
185A	DECK TO PENTHOUSE	3'-0" x 1'-0"	UD	?	..	UD	5/4A	1/4A	1/4A	W/ NEUL GLAZING	
186A	PENTHOUSE TO MECH	3'-0" x 6'-0"	UD	6	..	UD	1/4A	1/4A	..	DBL BI-FOLD	
187A	ELEV. TO PENTHOUSE	3'-0" x 6'-0"	UD	4	..	UD	1/4A	1/4A	..	..	

NOTES:  
 A. ALL WINDOW AND DOOR GRILLE STYLES BY OWNER (CONTRACTOR TO VERIFY).  
 B. PATIO AND ENTRY DOORS TO BE RED CEDAR AND STAINED TO MATCH OVER-HEAD DOORS.  
 C. ALL WINDOW AND DOOR DETAILS (EXCEPT FOR OVER-HEAD DOORS) ARE BASED ON "EAGLE" WINDOW.  
 D. OVER-HEAD DOOR TO BE "SERIES 106 (RANCH HOUSE COLLECTION)" BY OVER-HEAD DOOR OR ARCH. APPROVED EQUAL.

WINDOW SCHEDULE						
TYPE	WINDOW			DETAILS		
	RD. SIZE (W x H)	MATERIAL	OPERATION	HEAD	JAMB	SILL
(A)	6'-0" x 6'-0" (DBL)	UD (ALUM. CLAD EXT.)	DBL HUNG	10 / A6	6 / A6	7 / A6
(B)	4'-0" x 6'-0" (DBL)	UD (ALUM. CLAD EXT.)	DBL HUNG	10 / A6	6 / A6	7 / A6
(C)	5'-4" x 6'-0" (DBL)	UD (ALUM. CLAD EXT.)	DBL HUNG	10 / A6	6 / A6	7 / A6
(D)	3'-0" x 6'-0"	UD (ALUM. CLAD EXT.)	DBL HUNG	10 / A6	6 / A6	7 / A6
(E)	4'-8" x 6'-0" (DBL)	UD (ALUM. CLAD EXT.)	DBL HUNG	10 / A6	6 / A6	7 / A6
(F)	(NOT USED)					
(G)	9'-0" x 6'-0" (TRIPLE)	UD (ALUM. CLAD EXT.)	DBL HUNG	10 / A6	6 / A6	7 / A6
(H)	2'-8" x 2'-8"	UD (ALUM. CLAD EXT.)	FIXED	10 / A6 3/8"	6 / A6 3/8"	7 / A6 3/8"

NOTE:  
 A. ALL WINDOW AND DOOR GRILLE STYLES BY OWNER (CONTRACTOR TO VERIFY).  
 B. CONTRACTOR TO VERIFY WITH OWNER THE INTERIOR LOAD SPECIES FOR ALL WINDOWS.  
 C. FOR WINDOWS WITH ADJACENT COPPER PANELS SEE ELEVATIONS AND DETAILS 4 & 8/A6



**PORT CITY ARCHITECTURE**  
 85 NEWBURY STREET  
 PORTLAND, ME 04101  
 207.781.9000  
 fax: 207.781.2010  
 info@portcityarch.com

CONSULTANTS:

**44 FEDERAL STREET CONDOMINIUMS**  
 44 FEDERAL STREET  
 Portland, Maine 04101

3	5-15-25	CONSTRUCTION SET
2	1-1-25	PERMIT SET
1	6-3-25	REVIEW SET

REVISIONS

Date Issued: Date - Year

Project Number: 04206

Drawing Scale

SHEET NAME: SCHEDULES

Drawn By: MC</