

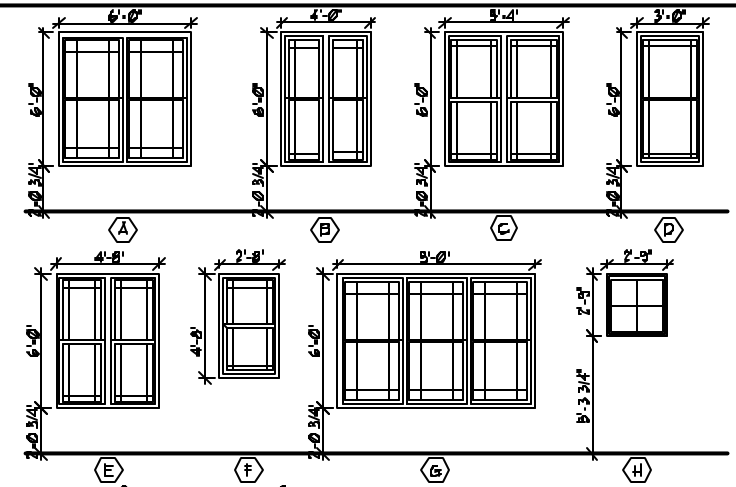
DOOR SCHEDULE

UNIT	NRM	DESCRIPTION	SIZE	DOOR		FRAME			DETAILS	NOTES
				MAT	TYPE	MAT	HEAD	JAMB		
UNIT A	102A	EXTERIOR TO GARAGE	8'-0" x 8'-0"	UD	1	UD	1/A6	3/A6	1/A6	OVERHEAD DOOR - SEE SPEC.
	102B	GARAGE TO ENTRY	3'-0" x 6'-8"	UD	4	UD	1/A6	1/A6	1/A6	
	102C	GARAGE TO PATIO	9'-0" x 7'-0"	UD	8	UD	1/A6	1/A6	1/A6	W/ NSUL GLAZING
	102A	PORCH TO ENTRY	3'-0" x 7'-0"	UD	2	UD	1/A6	1/A6	1/A6	W/ NSUL GLAZING
	102A	ENTRY TO CL	4'-0" x 6'-8"	UD	6	UD	1/A6	1/A6	1/A6	DBL BI-FOLD
	102A	MACH TO ENTRY	2'-6" x 6'-8"	UD	4	UD	1/A6	1/A6	1/A6	
	102A	ELEV. TO ENTRY	3'-0" x 6'-8"	UD	4	UD	1/A6	1/A6	1/A6	
	102A	ALL-PURPOSE TO BATH	2'-8" x 6'-8"	UD	4	UD	1/A6	1/A6	1/A6	
	102A	ENTRY TO ALL-PURPOSE	2'-8" x 6'-8"	UD	4	UD	1/A6	1/A6	1/A6	
	102B	ALL-PURPOSE TO CL	3'-2" x 6'-8"	UD	6	UD	1/A6	1/A6	1/A6	DBL BI-FOLD
	102C	ALL-PURPOSE TO CL	3'-2" x 6'-8"	UD	6	UD	1/A6	1/A6	1/A6	DBL BI-FOLD
	102D	ALL-PURPOSE TO PATIO	3'-0" x 7'-0"	UD	8	UD	1/A6	1/A6	1/A6	W/ NSUL GLAZING
UNIT B	102A	GARAGE TO MECH	5'-0" x 6'-8"	UD	6	UD	1/A6	1/A6	1/A6	DBL BI-FOLD
	202A	KITCHEN TO DECK	3'-0" x 7'-0"	UD	8	UD	1/A6	1/A6	1/A6	W/ NSUL GLAZING
	202A	ELEV. TO LIVING	2'-8" x 6'-8"	UD	4	UD	1/A6	1/A6	1/A6	
	202A	KIT. TO PANTRY	2'-2" x 6'-8"	UD	5	UD	1/A6	1/A6	1/A6	BL BI-FOLD
	302A	HALL TO BEDROOM	2'-8" x 6'-8"	UD	1	UD	1/A6	1/A6	1/A6	
	302A	BEDROOM TO CL	9'-8" x 6'-8"	UD	6	UD	1/A6	1/A6	1/A6	DBL BI-FOLD
	302A	BEDROOM TO CL	3'-8" x 6'-8"	UD	6	UD	1/A6	1/A6	1/A6	DBL BI-FOLD
	302C	BEDROOM TO CL	9'-8" x 6'-8"	UD	6	UD	1/A6	1/A6	1/A6	DBL BI-FOLD
	302A	BEDROOM TO CL	9'-8" x 6'-8"	UD	6	UD	1/A6	1/A6	1/A6	DBL BI-FOLD
	302A	HALL TO LAUNDRY	2'-8" x 6'-8"	UD	4	UD	1/A6	1/A6	1/A6	
	302A	HALL TO BATH	2'-8" x 6'-8"	UD	4	UD	1/A6	1/A6	1/A6	
	302A	ELEV. TO HALL	3'-0" x 6'-8"	UD	4	UD	1/A6	1/A6	1/A6	
302A	HALL TO MNT. BEDROOM	2'-8" x 6'-8"	UD	1	UD	1/A6	1/A6	1/A6		
302B	MNT. BEDROOM TO DECK	3'-0" x 7'-0"	UD	8	UD	1/A6	1/A6	1/A6	W/ NSUL GLAZING	
302A	MNT. BEDROOM TO MNT. CL	2'-8" x 6'-8"	UD	1	UD	1/A6	1/A6	1/A6		
UNIT C	402A	PENTHOUSE TO ROOF DECK	2'-8" x 7'-0"	UD	3	UD	1/A6	1/A6	1/A6	DBL PATIO DOOR W/ NSUL GLAZING
	402A	PENTHOUSE TO ROOF DECK	2'-8" x 7'-0"	UD	3	UD	1/A6	1/A6	1/A6	DBL PATIO DOOR W/ NSUL GLAZING
	402A	ELEV. TO PENTHOUSE	3'-0" x 6'-8"	UD	4	UD	1/A6	1/A6	1/A6	
	402A	PENTHOUSE TO MECH	9'-8" x 6'-8"	UD	6	UD	1/A6	1/A6	1/A6	DBL BI-FOLD
	102A	PORCH TO HALL	3'-0" x 7'-0"	UD	2	UD	1/A6	1/A6	1/A6	W/ NSUL GLAZING
	102A	GARAGE TO HALL	9'-0" x 6'-8"	UD	4	UD	1/A6	1/A6	1/A6	
	102B	EXTERIOR TO GARAGE	8'-0" x 8'-0"	UD	1	UD	1/A6	1/A6	1/A6	OVERHEAD DOOR - SEE SPEC.
	102A	CL. TO HALL	2'-0" x 4'-0"	UD	4	UD	1/A6	1/A6	1/A6	
	102A	MECH TO HALL	4'-4" x 6'-8"	UD	8	UD	1/A6	1/A6	1/A6	DBL BI-FOLD
	102A	ELEV. TO HALL	3'-0" x 6'-8"	UD	4	UD	1/A6	1/A6	1/A6	
	102A	HALL TO BATH	2'-8" x 6'-8"	UD	4	UD	1/A6	1/A6	1/A6	
	102A	MECH. TO ALL-PURPOSE	2'-8" x 6'-8"	UD	4	UD	1/A6	1/A6	1/A6	
102A	CL. TO ALL-PURPOSE	1'-0" x 6'-8"	UD	8	UD	1/A6	1/A6	1/A6	DBL	
102A	HALL TO ALL-PURPOSE	2'-8" x 6'-8"	UD	4	UD	1/A6	1/A6	1/A6		
102B	ALL-PURPOSE TO PATIO	3'-0" x 7'-0"	UD	8	UD	1/A6	1/A6	1/A6	W/ NSUL GLAZING	
UNIT D	202A	ELEV. TO LIVING	3'-0" x 6'-8"	UD	4	UD	1/A6	1/A6	1/A6	
	202A	LIVING TO DECK	3'-0" x 7'-0"	UD	8	UD	1/A6	1/A6	1/A6	W/ NSUL GLAZING
	302A	HALL TO BEDROOM	2'-8" x 6'-8"	UD	1	UD	1/A6	1/A6	1/A6	
	302A	BEDROOM TO CL	2'-8" x 6'-8"	UD	6	UD	1/A6	1/A6	1/A6	DBL BI-FOLD
	302A	HALL TO LAUNDRY	3'-8" x 6'-8"	UD	6	UD	1/A6	1/A6	1/A6	DBL BI-FOLD
	302A	BEDROOM TO BATH	2'-8" x 6'-8"	UD	1	UD	1/A6	1/A6	1/A6	
	302A	MNT. BEDROOM TO MNT. BATH	2'-8" x 6'-8"	UD	1	UD	1/A6	1/A6	1/A6	
	302B	MNT. BATH TO TOILET	2'-0" x 6'-8"	UD	4	UD	1/A6	1/A6	1/A6	POCKET DOOR - SHIM
	302A	ELEV. TO HALL	3'-0" x 6'-8"	UD	4	UD	1/A6	1/A6	1/A6	
	302A	HALL TO MNT. BEDROOM	2'-8" x 6'-8"	UD	1	UD	1/A6	1/A6	1/A6	
	302B	MNT. BEDROOM TO DECK	3'-0" x 7'-0"	UD	8	UD	1/A6	1/A6	1/A6	W/ NSUL GLAZING
	302A	MNT. BEDROOM TO CL	9'-8" x 6'-8"	UD	6	UD	1/A6	1/A6	1/A6	DBL BI-FOLD
302B	MNT. BEDROOM TO CL	3'-8" x 6'-8"	UD	6	UD	1/A6	1/A6	1/A6	DBL BI-FOLD	
UNIT E	402A	DECK TO PENTHOUSE	3'-0" x 7'-0"	UD	2	UD	1/A6	1/A6	1/A6	W/ NSUL GLAZING
	402B	DECK TO PENTHOUSE	3'-0" x 7'-0"	UD	2	UD	1/A6	1/A6	1/A6	W/ NSUL GLAZING
	402A	PENTHOUSE TO MECH	9'-8" x 6'-8"	UD	6	UD	1/A6	1/A6	1/A6	DBL BI-FOLD
	402A	ELEV. TO PENTHOUSE	3'-0" x 6'-8"	UD	4	UD	1/A6	1/A6	1/A6	
	102A	PORCH TO HALL	3'-0" x 7'-0"	UD	2	UD	1/A6	1/A6	1/A6	W/ NSUL GLAZING
	102A	EXTERIOR TO GARAGE	8'-0" x 8'-0"	UD	1	UD	1/A6	1/A6	1/A6	OVERHEAD DOOR - SEE SPEC.
	102A	GARAGE TO CL	3'-0" x 7'-0"	UD	4	UD	1/A6	1/A6	1/A6	
	102A	CL. TO HALL	2'-8" x 5'-0"	UD	5	UD	1/A6	1/A6	1/A6	BL BI-FOLD
	102A	HALL TO CL	2'-8" x 6'-8"	UD	5	UD	1/A6	1/A6	1/A6	BL BI-FOLD
	102A	ELEV. TO HALL	3'-0" x 6'-8"	UD	4	UD	1/A6	1/A6	1/A6	
	102A	GARAGE TO MECH	8'-0" x 6'-8"	UD	4	UD	1/A6	1/A6	1/A6	DBL BI-FOLD
	102A	HALL TO BATH	2'-8" x 6'-8"	UD	4	UD	1/A6	1/A6	1/A6	
102A	MACH. TO HALL	2'-6" x 6'-8"	UD	4	UD	1/A6	1/A6	1/A6		
102A	ALL-PURPOSE TO HALL	2'-8" x 6'-8"	UD	4	UD	1/A6	1/A6	1/A6		
102B	ALL-PURPOSE TO CL	9'-8" x 6'-8"	UD	6	UD	1/A6	1/A6	1/A6	DBL BI-FOLD	
102C	ALL-PURPOSE TO CL	9'-8" x 6'-8"	UD	6	UD	1/A6	1/A6	1/A6	DBL BI-FOLD	
102D	ALL-PURPOSE TO PATIO	9'-0" x 7'-0"	UD	8	UD	1/A6	1/A6	1/A6	W/ NSUL GLAZING	
UNIT F	202A	ELEV. TO LIVING	3'-0" x 6'-8"	UD	4	UD	1/A6	1/A6	1/A6	
	202A	LIVING TO DECK	3'-0" x 7'-0"	UD	8	UD	1/A6	1/A6	1/A6	W/ NSUL GLAZING
	302A	HALL TO BEDROOM	2'-8" x 6'-8"	UD	1	UD	1/A6	1/A6	1/A6	
	302A	BEDROOM TO BATH	2'-8" x 6'-8"	UD	1	UD	1/A6	1/A6	1/A6	
	302A	BEDROOM TO CL	3'-8" x 6'-8"	UD	6	UD	1/A6	1/A6	1/A6	DBL BI-FOLD
	302A	HALL TO LAUNDRY	4'-0" x 6'-8"	UD	6	UD	1/A6	1/A6	1/A6	DBL BI-FOLD
	302A	MNT. BEDROOM TO MNT. BATH	2'-8" x 6'-8"	UD	1	UD	1/A6	1/A6	1/A6	
	302A	ELEV. TO HALL	3'-0" x 6'-8"	UD	4	UD	1/A6	1/A6	1/A6	
	302A	HALL TO MNT. BEDROOM	2'-8" x 6'-8"	UD	1	UD	1/A6	1/A6	1/A6	
	302B	MNT. BEDROOM TO DECK	3'-0" x 7'-0"	UD	8	UD	1/A6	1/A6	1/A6	W/ NSUL GLAZING
	302A	MNT. BEDROOM TO CL	6'-8" x 6'-8"	UD	8	UD	1/A6	1/A6	1/A6	DBL BI-FOLD
	302B	MNT. BEDROOM TO CL	6'-8" x 6'-8"	UD	8	UD	1/A6	1/A6	1/A6	DBL BI-FOLD
UNIT G	402A	DECK TO PENTHOUSE	3'-0" x 7'-0"	UD	2	UD	1/A6	1/A6	1/A6	W/ NSUL GLAZING
	402B	DECK TO PENTHOUSE	3'-0" x 7'-0"	UD	2	UD	1/A6	1/A6	1/A6	W/ NSUL GLAZING
	402A	PENTHOUSE TO MECH	9'-8" x 6'-8"	UD	6	UD	1/A6	1/A6	1/A6	DBL BI-FOLD
	402A	ELEV. TO PENTHOUSE	3'-0" x 6'-8"	UD	4	UD	1/A6	1/A6	1/A6	
	102A	PORCH TO HALL	3'-0" x 7'-0"	UD	2	UD	1/A6	1/A6	1/A6	W/ NSUL GLAZING
	102A	EXTERIOR TO GARAGE	8'-0" x 8'-0"	UD	1	UD	1/A6	1/A6	1/A6	OVERHEAD DOOR - SEE SPEC.
	102A	GARAGE TO CL	3'-0" x 7'-0"	UD	4	UD	1/A6	1/A6	1/A6	
	102A	CL. TO HALL	2'-8" x 5'-0"	UD	5	UD	1/A6	1/A6	1/A6	BL BI-FOLD
	102A	HALL TO CL	2'-8" x 6'-8"	UD	5	UD	1/A6	1/A6	1/A6	BL BI-FOLD
	102A	ELEV. TO HALL	3'-0" x 6'-8"	UD	4	UD	1/A6	1/A6	1/A6	
	102A	GARAGE TO MECH	8'-0" x 6'-8"	UD	4	UD	1/A6	1/A6	1/A6	DBL BI-FOLD
	102A	HALL TO BATH	2'-8" x 6'-8"	UD	4	UD	1/A6	1/A6	1/A6	
102A	MACH. TO HALL	2'-6" x 6'-8"	UD	4	UD	1/A6	1/A6	1/A6		
102A	ALL-PURPOSE TO HALL	2'-8" x 6'-8"	UD	4	UD	1/A6	1/A6	1/A6		
102B	ALL-PURPOSE TO CL	9'-8" x 6'-8"	UD	6	UD	1/A6	1/A6	1/A6	DBL BI-FOLD	
102C	ALL-PURPOSE TO CL	9'-8" x 6'-8"	UD	6	UD	1/A6	1/A6	1/A6	DBL BI-FOLD	
102D	ALL-PURPOSE TO PATIO	9'-0" x 7'-0"	UD	8	UD	1/A6	1/A6	1/A6	W/ NSUL GLAZING	

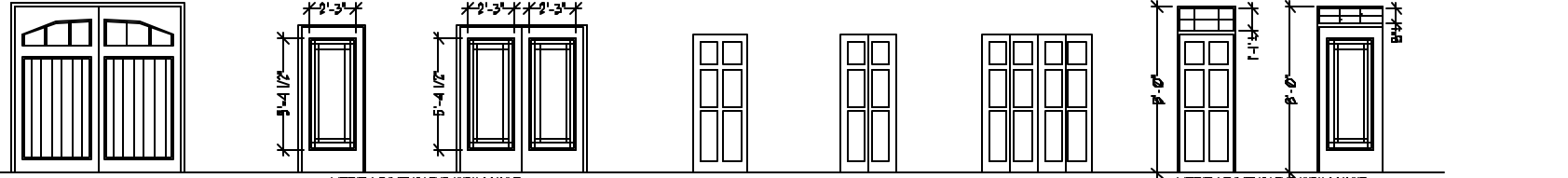
WINDOW SCHEDULE

TYPE	RQ. SIZE (W x H)	WINDOW	MATERIAL	OPERATION	DETAILS		
					HEAD	JAMB	SILL
A	6'-0" x 6'-0" (DBL)	UD (ALUM. CLAD EXT.)	DBL HUNG	10 / A6	6 / A6	2 / A6	
B	4'-0" x 6'-0" (DBL)	UD (ALUM. CLAD EXT.)	DBL HUNG	10 / A6	6 / A6	2 / A6	
C	5'-4" x 6'-0" (DBL)	UD (ALUM. CLAD EXT.)	DBL HUNG	10 / A6	6 / A6	2 / A6	
D	3'-0" x 6'-0"	UD (ALUM. CLAD EXT.)	DBL HUNG	10 / A6	6 / A6	2 / A6	
E	4'-0" x 6'-0" (DBL)	UD (ALUM. CLAD EXT.)	DBL HUNG	10 / A6	6 / A6	2 / A6	
F	2'-8" x 6'-0"	UD (ALUM. CLAD EXT.)	DBL HUNG	10 / A6	6 / A6	2 / A6	
G	9'-0" x 6'-0" (TRIPLE)	UD (ALUM. CLAD EXT.)	DBL HUNG	10 / A6	6 / A6	2 / A6	
H	2'-8" x 7'-5"	UD (ALUM. CLAD EXT.)	FIXED	10 / A6 GM	6 / A6 GM	2 / A6 GM	

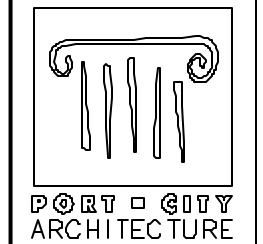
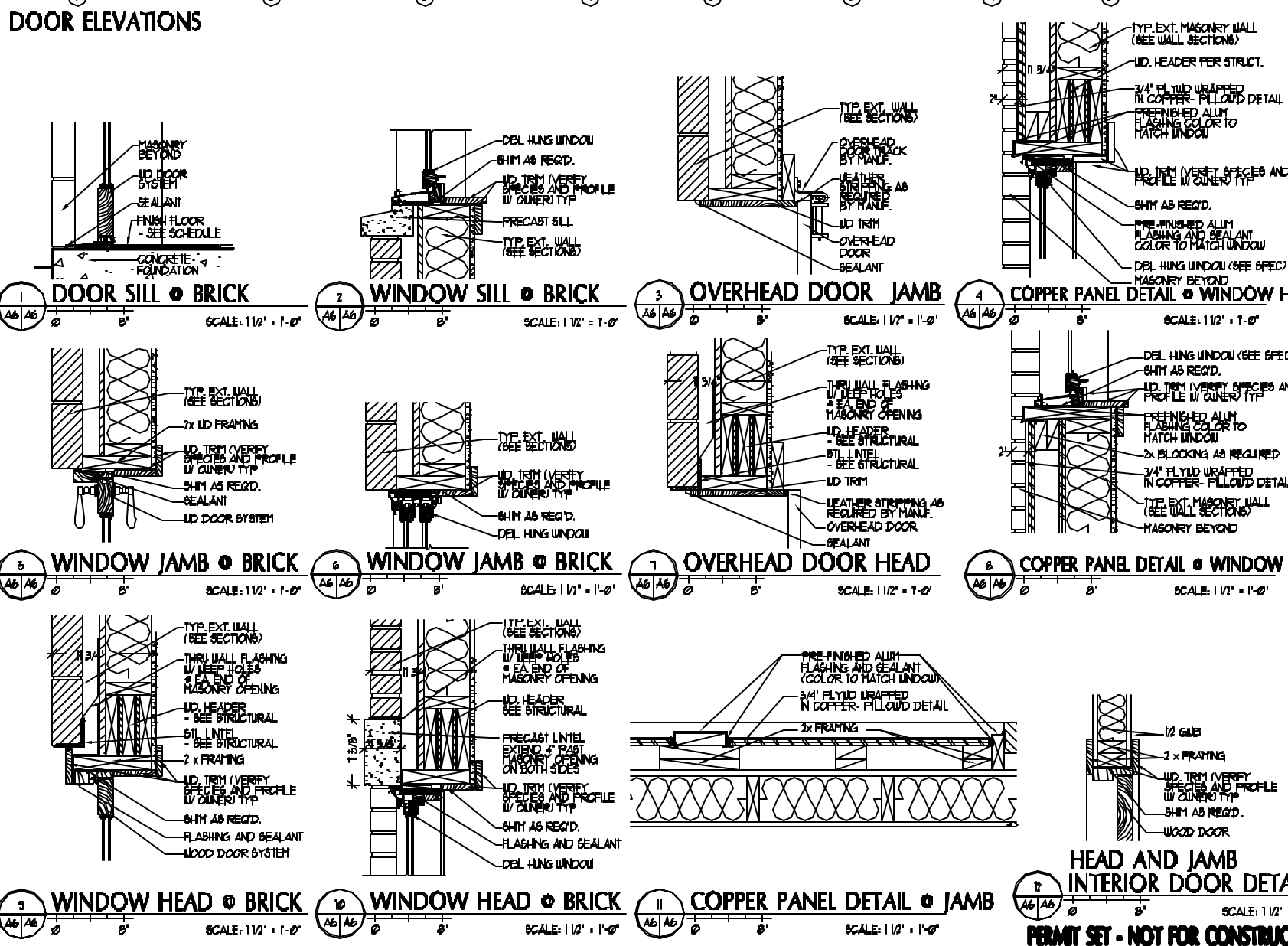
NOTES: A. ALL WINDOW AND DOOR GRILLE STYLES BY OWNER (CONTRACTOR TO VERIFY).
 B. PATIO AND ENTRY DOORS TO BE RED CEDAR AND STAINED TO MATCH OVERHEAD DOORS.
 C. ALL WINDOW AND DOOR DETAILS (EXCEPT FOR OVERHEAD DOORS) ARE BASED ON "A6" WINDOW.
 D. OVERHEAD DOOR TO BE SERIES #38 (RANCH HOUSE COLLECTION) BY OVERHEAD DOOR OR ARCH. APPROVED EQUAL.



WINDOW ELEVATIONS



DOOR ELEVATIONS



PORT CITY ARCHITECTURE
 65 NEWBURY STREET
 PORTLAND, ME 04101
 207.781.9000
 fax: 207.781.2010
 info@portcityarch.com

CONSULTANTS:

44 FEDERAL STREET CONDOMINIUMS
 44 FEDERAL STREET
 Portland, Maine 04101

DATE	DESCRIPTION
11-1-05	PERMIT SET
10-9-05	REVIEW SET
* DATE DESCRIPTION	
REVISIONS	
Date Issued	Date - Year
Project Number	04106
Drawing Book	

SCHEDULES

Drawn By: